

**STARK COUNTY SANITARY ENGINEERING DEPARTMENT
 GENERAL NOTE**

ALL APPENDICES, ITEMS, AND NOTES CALLED OUT IN THE FOLLOWING STARK COUNTY SANITARY ENGINEERING DEPARTMENT SPECIAL ITEMS, CAN BE FOUND ON THE STARK COUNTY SANITARY ENGINEERING DEPARTMENT'S WEBSITE BY GOING TO WWW.STARKCOUNTYOHIO.GOV/SANITARY-ENGINEERS.

PLEASE REFER TO THIS SITE AND CHECK FOR THE LATEST NOTES, APPENDICES, AND ITEMS AS INDICATED.

**ITEM 202 - MANHOLE ABANDONED, AS PER PLAN
 ITEM 202 - ABANDON MISC.: PIPE ABANDONED,
 STARK COUNTY SANITARY ENGINEERING DEPARTMENT**

ALL WORK ASSOCIATED WITH THE ABANDONMENT OF SANITARY MANHOLES AND SEWERS SHALL COMPLY WITH STARK COUNTY SANITARY ENGINEERING DEPARTMENT ITEM 46 SEWER AND MANHOLE ABANDONMENT.

MANHOLE IRON LID AND FRAME WILL BE RETURNED TO THE STARK COUNTY'S SANITARY ENGINEER'S YARD AT 1701 MAHONING ROAD NE.

**ITEM 611 - MANHOLE, MISC.: SANITARY SEWER MANHOLE TYPE A,
 STARK COUNTY SANITARY ENGINEERING DEPARTMENT
 ITEM 611 - MANHOLE, MISC.: SANITARY SEWER MANHOLE
 SHALLOW PRECAST,
 STARK COUNTY SANITARY ENGINEERING DEPARTMENT**

ALL WORK AND PAYMENT ASSOCIATED WITH THIS ITEM SHALL CONFORM TO THE STARK COUNTY SANITARY ENGINEERING DEPARTMENT SPECIFICATIONS FOR ITEM 16 - MANHOLES AND DETAILS DWG.NO. 9, 11, 12 AND 13A ON SHEET P.46.

PRIOR TO ACCEPTANCE, MANHOLES SHALL BE AIR/VACUUM TESTED IN ACCORDANCE WITH AND MEET ALL THE REQUIREMENTS OF ASTM C-1244.

**ITEM 611 - CONDUIT, MISC.: 8-INCH SANITARY SEWER,
 STARK COUNTY SANITARY ENGINEERING DEPARTMENT**

ALL WORK AND PAYMENT ASSOCIATED WITH THIS ITEM SHALL CONFORM TO THE STARK COUNTY SANITARY ENGINEERING DEPARTMENT SPECIFICATIONS FOR ITEM 14 - PVC GRAVITY PIPE SEWERS. FOR TRENCH DETAILS REFERENCE STARK COUNTY DWG.NO. 1 AND 2 ON SHEET P.46.

PRIOR TO ACCEPTANCE, THE GRAVITY SANITARY SEWER SHALL BE AIR TESTED IN ACCORDANCE WITH APPENDIX B OF THE STARK COUNTY SANITARY ENGINEERING DEPARTMENT SPECIFICATIONS AND ASTM F-1417, AND SHALL PASS DEFLECTION TESTING IN ACCORDANCE WITH APPENDIX C OF THE STARK COUNTY SANITARY ENGINEERING DEPARTMENT SPECIFICATIONS.

THE CONTRACTOR SHALL NOTE THAT IN ADDITION TO THE REQUIREMENTS FOR ACCEPTANCE SPECIFIED HEREIN THAT THE SEWER IS ALSO REQUIRED TO PASS AN INTERNAL TELEVISION INSPECTION WHICH SHALL PAID FOR UNDER A SEPARATE BID ITEM. THE WORK AND PAYMENT FOR THIS ITEM SHALL BE INCLUDED IN ITEM 611 - CONDUIT, MISC.: 8-INCH SANITARY SEWER VIDEO RECORDING & INSPECTION, STARK COUNTY SANITARY ENGINEERING DEPARTMENT.

**ITEM 611 - CONDUIT, MISC.: 8-INCH SANITARY SEWER VIDEO
 RECORDING & INSPECTION,
 STARK COUNTY SANITARY ENGINEERING DEPARTMENT**

ALL WORK AND PAYMENT ASSOCIATED WITH THIS ITEM SHALL CONFORM TO THE STARK COUNTY SANITARY ENGINEERING DEPARTMENT SPECIFICATIONS FOR ITEM 40 - NEW SEWER VIDEO RECORDING AND INSPECTION.

PAYMENT FOR ALL THE OPERATIONS DESCRIBED ABOVE SHALL BE INCLUDED IN THE LUMP SUM PRICE FOR ITEM 611 - CONDUIT, MISC.: 8-INCH SANITARY SEWER VIDEO RECORDING & INSPECTION, STARK COUNTY SANITARY ENGINEERING DEPARTMENT.

**ITEM 611 - CONDUIT, MISC.: 14-INCH FORCE MAIN, DIP CLASS 52,
 MECHANICAL JOINTS AND FITTING,
 STARK COUNTY SANITARY ENGINEERING DEPARTMENT**

ALL WORK AND PAYMENT ASSOCIATED WITH THIS ITEM SHALL CONFORM TO THE STARK COUNTY SANITARY ENGINEERING DEPARTMENT SPECIFICATIONS FOR ITEM 11 - DUCTILE IRON PIPE AND FITTINGS AND DETAILS DWG.NO. 27, 28A AND 32B ON SHEET P.47 AND DETAIL DWG.NO 28 THIS SHEET.

THE PROPOSED FORCE MAIN PIPING SHALL BE HYDROSTATICALLY TESTED UP TO, BUT EXCLUDING, TIE-IN CONNECTIONS IN ACCORDANCE WITH APPENDIX D OF THE STARK COUNTY SEWER ITEM SPECIFICATIONS. ALL LABOR AND MATERIALS NECESSARY TO PERFORM TESTING IN ACCORDANCE WITH APPENDIX D SHALL BE INCLUDED IN THE FORCE MAIN ITEM FOR BID. THE TIE-IN CONNECTIONS TO THE EXISTING FORCE MAIN SHALL BE ACCOMPLISHED WITH AN APPROVED HDPE/DIP TRANSITION AND BE VISUALLY INSPECTED BY THE COUNTY. THE EXISTING FORCE MAIN SHALL REMAIN IN SERVICE UNTIL TESTING OF THE PROPOSED FORCE MAIN AND A COORDINATED BYPASS FLOW PLAN IS ACCEPTED BY THE COUNTY

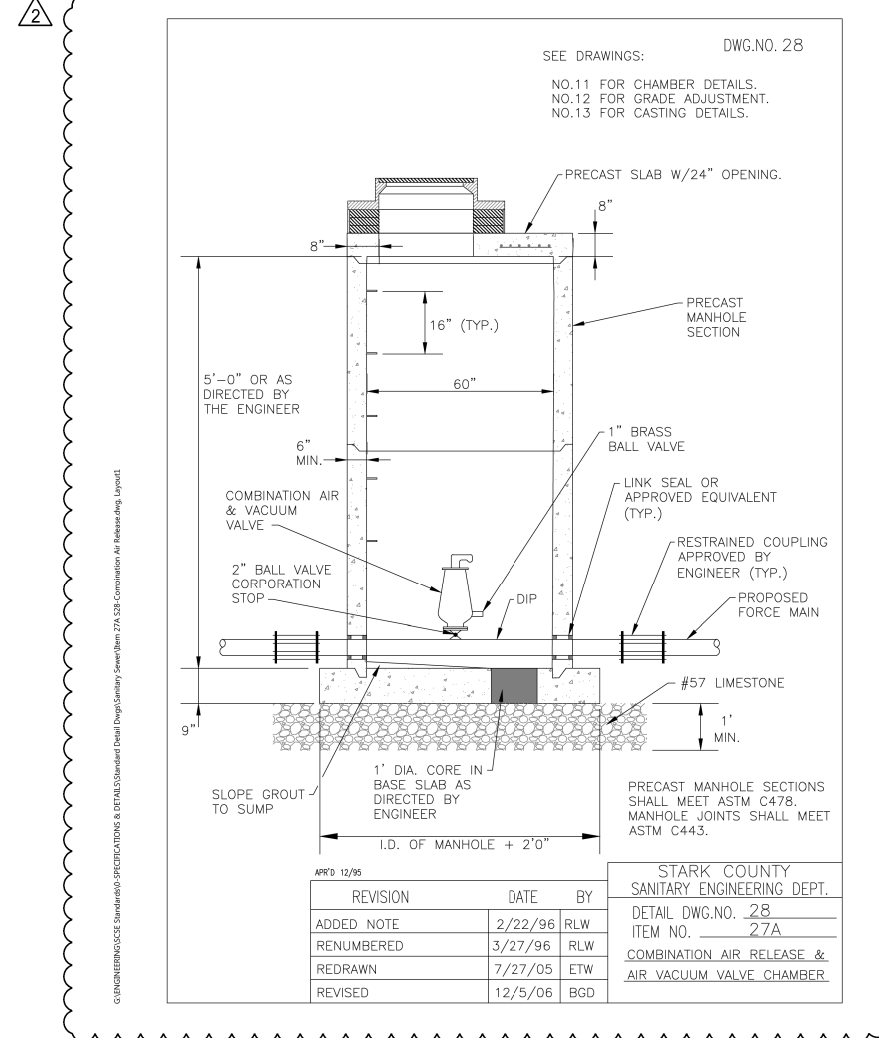
**ITEM 611 - CONDUIT, MISC.: MAINTAINING SANITARY FLOW
 DURING CONSTRUCTION, STARK COUNTY SANITARY
 ENGINEERING DEPARTMENT**

ALL WORK AND PAYMENT ASSOCIATED WITH THIS ITEM SHALL CONFORM TO THE STARK COUNTY SANITARY ENGINEERING DEPARTMENT SPECIFICATIONS FOR ITEM 51 - BYPASS PUMPING/MAINTENANCE OF FLOW.

ACCORDING TO RECORD DATA THE EXISTING 14" SANITARY FORCE MAIN EXHIBITS PEAK ESTIMATED FLOWS OF APPROXIMATELY 1400 GPM.

THE EXISTING FORCE MAIN SHALL REMAIN IN SERVICE UNTIL THE PROPOSED FORCE MAIN IS TESTED AND ACCEPTED BY THE COUNTY UP TO THE CONNECTION LOCATIONS, AS SHOWN ON THE DRAWINGS. THE CONTRACTOR SHALL COORDINATE MAKING CONNECTIONS TO THE EXISTING FORCE MAIN WITH STARK COUNTY DURING LOW FLOW CONDITIONS. THE COUNTY HAS THE ABILITY TO BYPASS LOW FLOW CONDITIONS FOR A DURATION OF 2 HOURS AT THE EXISTING PUMP STATION TO A NEARBY ADJACENT FORCE MAIN. THE CONTRACTOR SHALL NOT BE PERMITTED TO STOP OR IMPEDE INFLUENT MAIN LINE FLOWS UNDER ANY CIRCUMSTANCES AT THE EXISTING PUMP STATION. ADDITIONAL STORAGE, SUCH AS STORAGE TANKS, SHALL BE CONSIDERED, AS NECESSARY.

PAYMENT FOR ALL THE OPERATIONS DESCRIBED ABOVE SHALL BE INCLUDED IN THE LUMP SUM PRICE FOR ITEM 611 - CONDUIT, MISC.: MAINTAINING SANITARY FLOW DURING CONSTRUCTION, STARK COUNTY SANITARY ENGINEERING DEPARTMENT.



GENERAL NOTES

DESIGN AGENCY



DESIGNER

JDK

REVIEWER

WBH 07/16/21

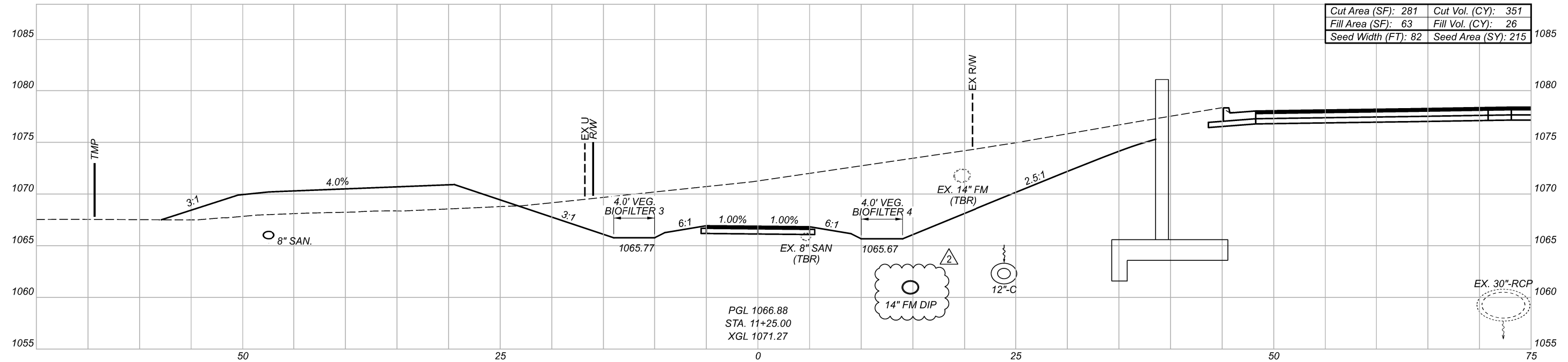
PROJECT ID

110429

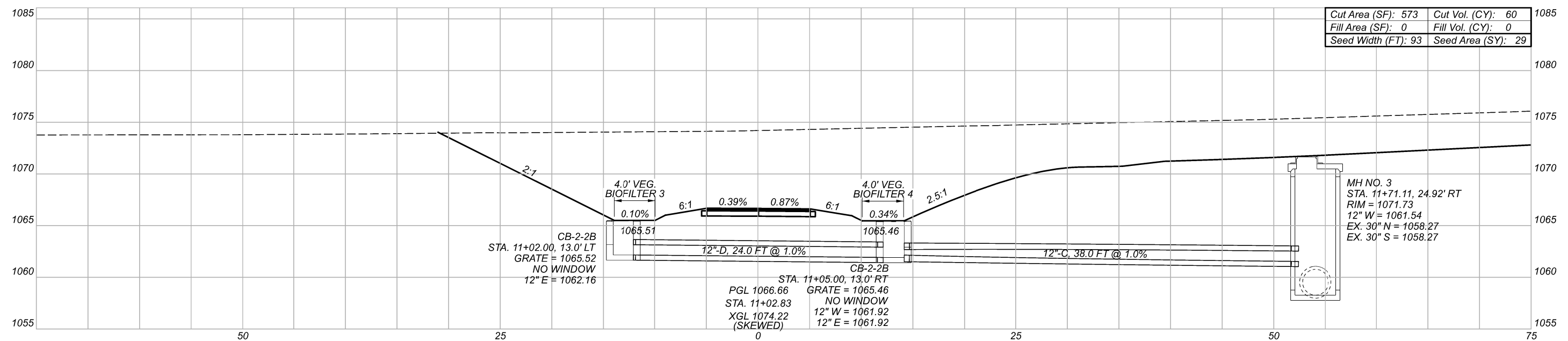
SHEET TOTAL

P.7A P.78

△ FORCEMAIN REVISED 3-11-22



Cut Area (SF): 281	Cut Vol. (CY): 351
Fill Area (SF): 63	Fill Vol. (CY): 26
Seed Width (FT): 82	Seed Area (SY): 215



Cut Area (SF): 573	Cut Vol. (CY): 60
Fill Area (SF): 0	Fill Vol. (CY): 0
Seed Width (FT): 93	Seed Area (SY): 29

MH NO. 3
 STA. 11+71.11, 24.92' RT
 RIM = 1071.73
 12" W = 1061.54
 EX. 30" N = 1058.27
 EX. 30" S = 1058.27

STA-TR 211-1.91

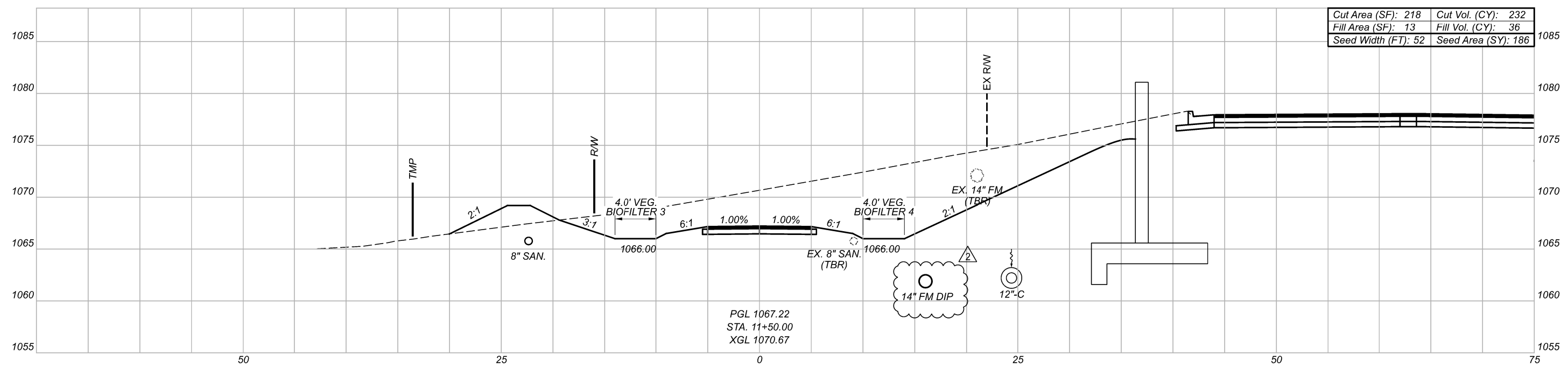
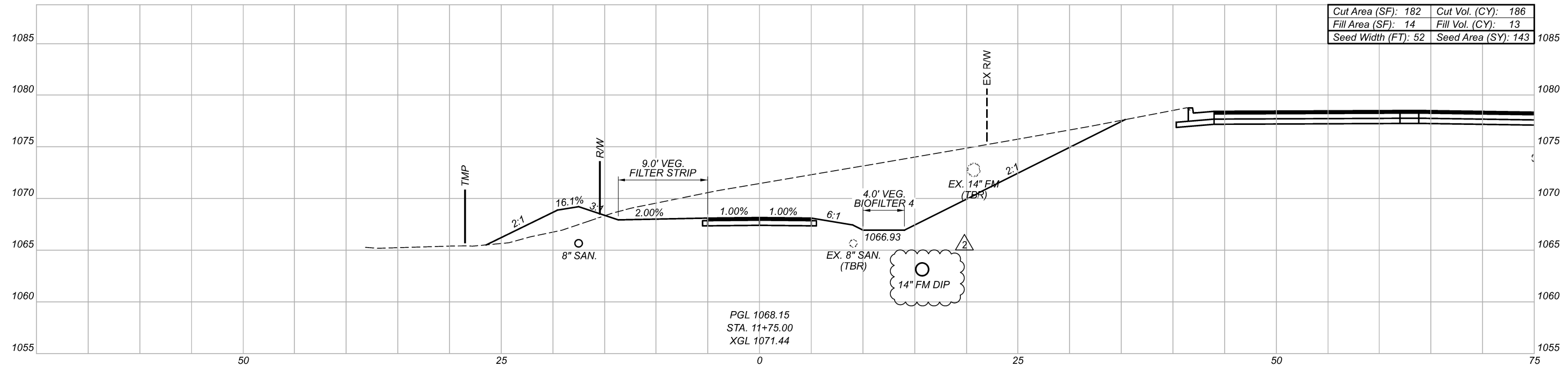
MODEL: I:\00\00 [Sheet] PAPER SIZE: I:\00\00 DATE: 3/11/2022 TIME: 5:34:36 PM USER: jkuczynski
 N:\01\060\06846-00\10429\400-Engineering\Roadway\Sheets\10429_XS02.dgn

SHARED USE PATH CROSS SECTIONS
 STA. 11+02.83 TO STA. 11+25

DESIGN AGENCY

 ms consultants, inc.
 DESIGNER
 JDK
 REVIEWER
 WBH 07/16/21
 PROJECT ID
 110429
 SHEET TOTAL
 P.27 P.78

Sheet Totals		
Seeding	Cut	Fill
244	411	26



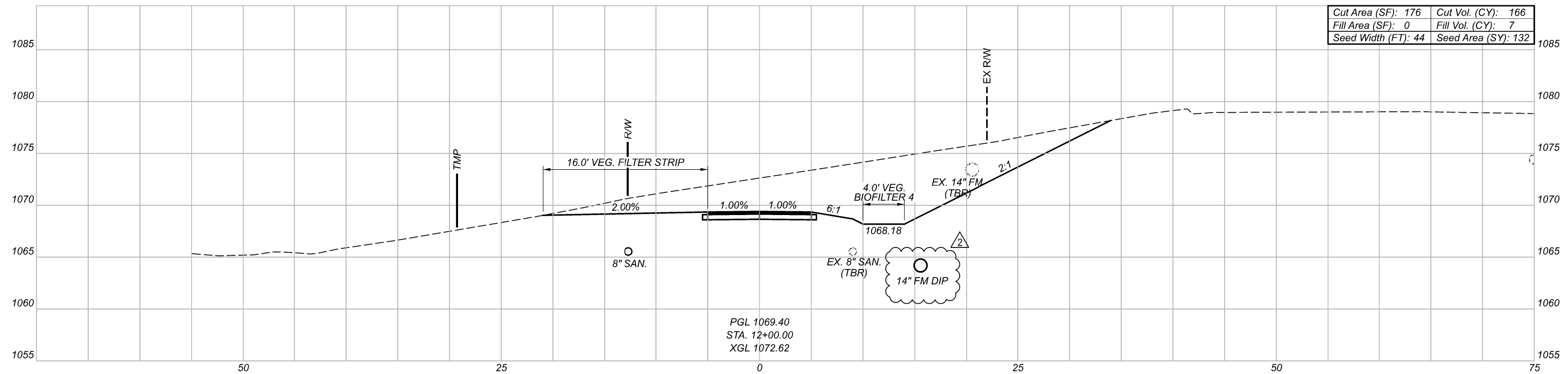
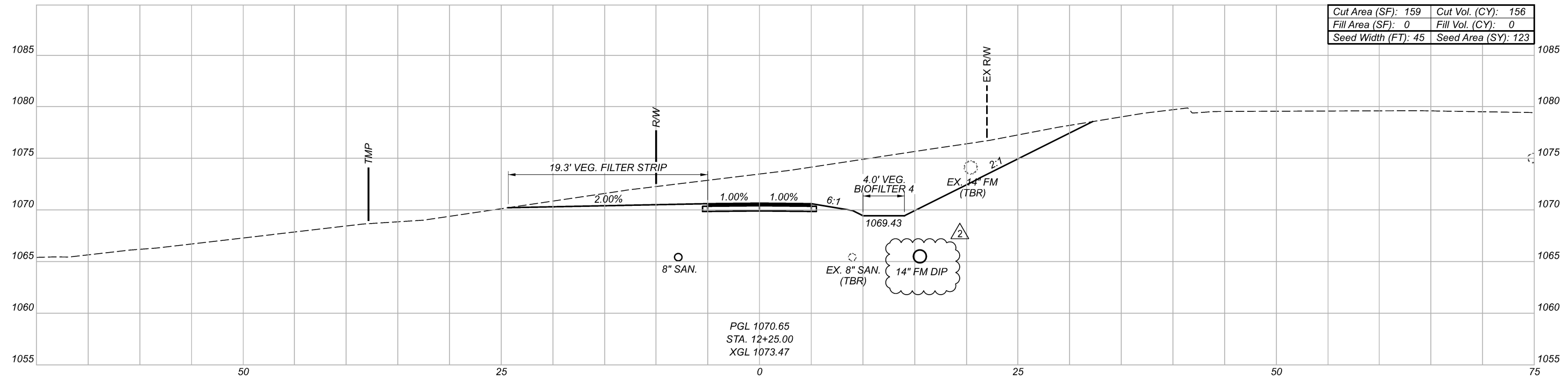
SHARED USE PATH CROSS SECTIONS
 STA. 11+50 TO STA. 11+75

DESIGN AGENCY



DESIGNER
 JDK
 REVIEWER
 WBH 07/16/21
 PROJECT ID
 110429

Sheet Totals			SHEET TOTAL	
Seeding	Cut	Fill	P.28	P.78
329	418	49		



STA-TR 211-1.91

MODEL: 12+00.00 [Sheet] PAPER SIZE: 17x11 (in.) DATE: 3/11/2022 TIME: 5:35:39 PM USER: jkuczyński
 N:\0160\06846-00\10429\400-Engineering\Roadway\Sheets\10429_XS02.dgn

SHARED USE PATH CROSS SECTIONS
 STA. 12+00 TO STA. 12+25

DESIGN AGENCY



DESIGNER

JDK

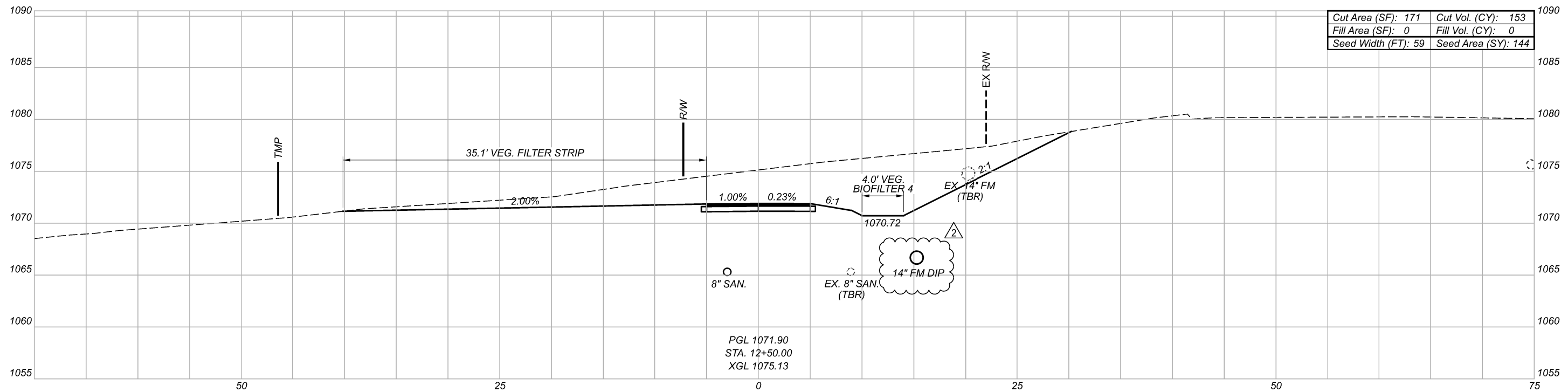
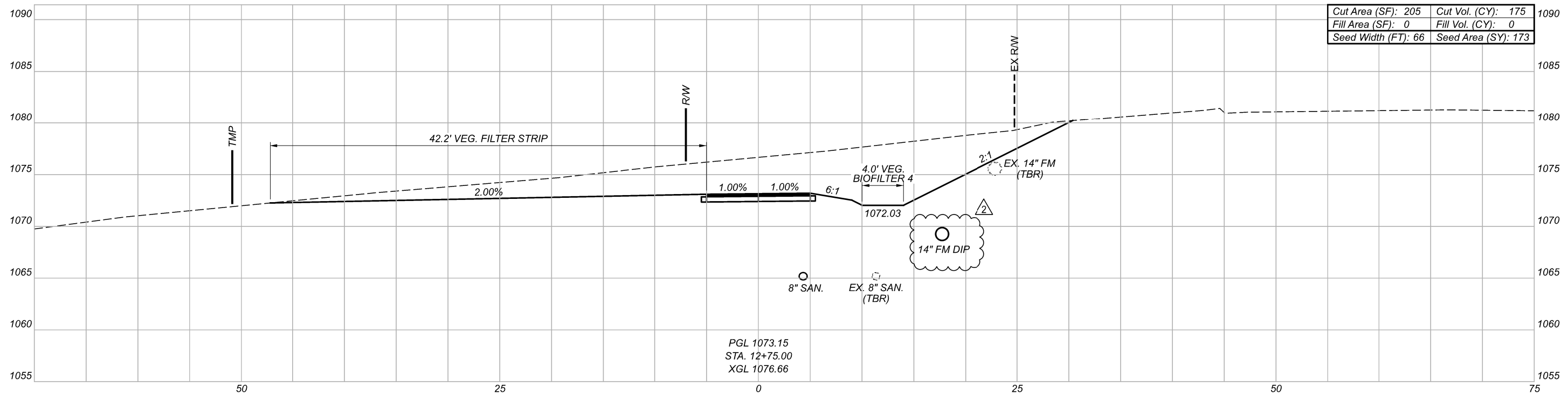
REVIEWER

WBH 07/16/21

PROJECT ID

110429

Sheet Totals			SHEET TOTAL	
Seeding	Cut	Fill	P.29	P.78
255	322	7		



STA-TR 211-1.91

MODEL: 12+50.00 [Sheet] PAPER SIZE: 17x11 (in.) DATE: 3/11/2022 TIME: 5:36:45 PM USER: jkuczynski
 N:\0160\06845-00\110429\400-Engineering\Roadway\Sheets\110429_X502.dgn

SHARED USE PATH CROSS SECTIONS
 STA. 12+50 TO STA. 12+75

DESIGN AGENCY



DESIGNER

JDK

REVIEWER

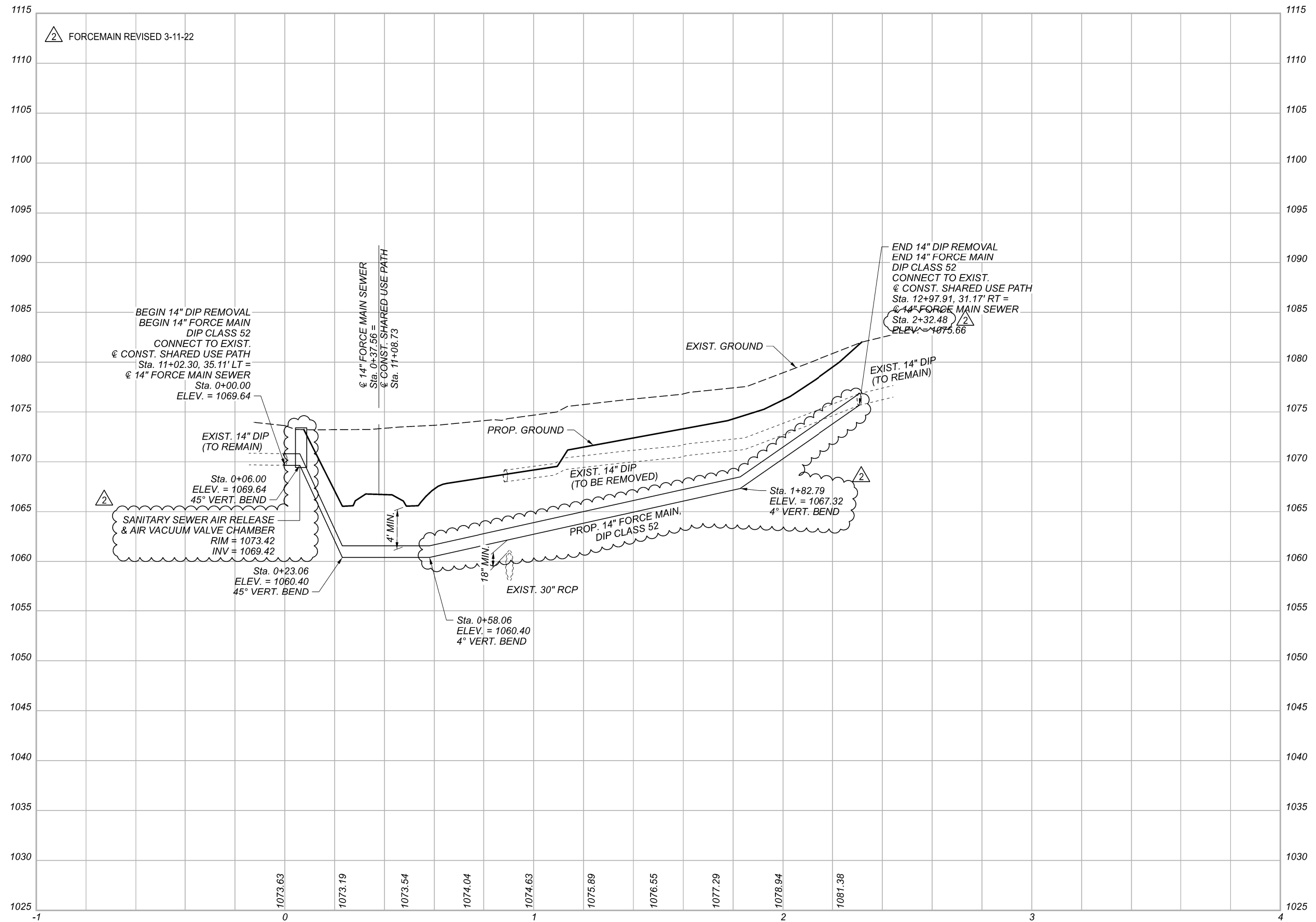
WBH 07/16/21

PROJECT ID

110429

Sheet Totals		
Seeding	Cut	Fill
317	328	0

SHEET	TOTAL
P.30	P.78



SANITARY FORCE MAIN PROFILE

DESIGN AGENCY



DESIGNER

JDK

REVIEWER

WBH 07/16/21

PROJECT ID

110429

SHEET

P.49

TOTAL

P.78