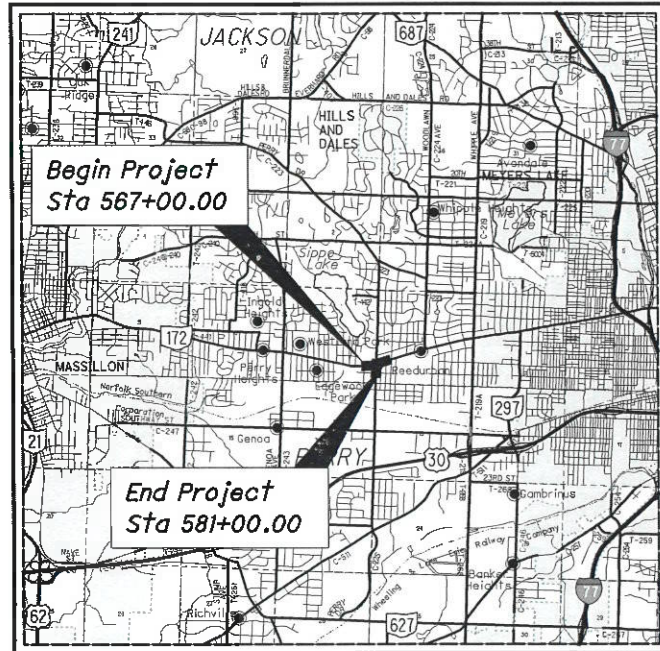


STATE OF OHIO
DEPARTMENT OF TRANSPORTATION

STA-172-10.86

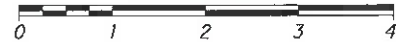
**PERRY TOWNSHIP
STARK COUNTY**



LOCATION MAP

LATITUDE: 40°47'33" LONGITUDE: 81°26'46"

SCALE IN MILES



PORTION TO BE IMPROVED	_____
INTERSTATE HIGHWAY	=====
FEDERAL ROUTES	-----
STATE ROUTES	-----
COUNTY & TOWNSHIP ROADS	-----
OTHER ROADS	-----

DESIGN DESIGNATION	S.R. 172 W (W OF PERRY)	S.R. 172 W (E OF PERRY)	PERRY DR NW	PERRY DR SW
CURRENT ADT (2022)	15,000	16,800	9,650	10,200
DESIGN YEAR ADT (2042)	15,000	16,800	9,650	10,200
DESIGN HOURLY VOLUME (2042)	1,800	1,680	965	1020
DIRECTIONAL DISTRIBUTION	0.55	0.55	0.53	0.53
TRUCKS (24 HOUR B&C)	0.04	0.03	0.03	0.04
DESIGN SPEED	45	45	40	40
LEGAL SPEED	40	40	35	35
DESIGN FUNCTIONAL CLASSIFICATION:	PRINCIPAL ARTERIAL (URBAN)	PRINCIPAL ARTERIAL (URBAN)	MINOR ARTERIAL (URBAN)	MINOR ARTERIAL (URBAN)
NHS PROJECT	NO			

DESIGN EXCEPTIONS

None Required

INDEX OF SHEETS:

TITLE SHEET	1
SCHEMATIC PLAN	2
TYPICAL SECTIONS	3-5
GENERAL NOTES	6-9, 9A
MAINTENANCE OF TRAFFIC	10-29
GENERAL SUMMARY	30-33
SUBSUMMARIES	34-35
PROJECT SITE PLAN	36
PLAN AND PROFILES	
S.R. 172	37-40
PERRY DR	41-42
CROSS SECTIONS	
S.R. 172	43-55
PERRY DR	56-62
INTERSECTION DETAILS	63-68
DRIVE DETAILS	69-71
WATER WORKS	72-79
PAVEMENT MARKING & SIGNING	80-88
TRAFFIC CONTROL ELEVATION VIEWS	89-90
TRAFFIC SIGNALS	91-100
RIGHT-OF-WAY	101-109

PROJECT DESCRIPTION

INTERSECTION IMPROVEMENT OF S.R. 172 AT PERRY DRIVE BY ADDING A WESTBOUND RIGHT TURN LANE ON S.R. 172, AN EASTBOUND RIGHT TURN SLIP LINE ON S.R. 172, AND A NORTHBOUND RIGHT TURN LANE ON PERRY DRIVE. WORK INCLUDES SIGNAL REPLACEMENT, MINOR CROSS WALK AND DRAINAGE UPGRADES, AND WATERLINE REPLACEMENT.

EARTH DISTURBED AREAS

PROJECT EARTH DISTURBED AREA: 1.1 ACRES
ESTIMATED CONTRACTOR EARTH DISTURBED AREA: 0.4 ACRES
NOTICE OF INTENT EARTH DISTURBED AREA: 1.5 ACRES

MAINTENANCE OF TRAFFIC

I HEREBY APPROVE THESE PLANS AND DECLARE THAT THE MAKING OF THIS IMPROVEMENT WILL NOT REQUIRE THE CLOSING TO TRAFFIC OF THE HIGHWAY EXCEPT AS NOTED ON SHEETS 14, 17, AND 25, AND THAT PROVISIONS FOR THE MAINTENANCE AND SAFETY OF TRAFFIC WILL BE AS SET FORTH ON THE PLANS AND ESTIMATES.

2019 SPECIFICATIONS

THE STANDARD SPECIFICATIONS OF THE STATE OF OHIO, DEPARTMENT OF TRANSPORTATION, INCLUDING SUPPLEMENTAL SPECIFICATIONS LISTED IN THE PLANS AND CHANGES LISTED IN THE PROPOSAL SHALL GOVERN THIS IMPROVEMENT.

UNDERGROUND UTILITIES
Contact Two Working Days Before You Dig

OHIO811, 8-1-1, or 1-800-362-2764
(Non-members must be called directly)

Revised Dates and names of SCD.

STANDARD CONSTRUCTION DRAWINGS										SUPPLEMENTAL SPECIFICATIONS		SPECIAL PROVISIONS	
BP-3.1	1/17/20	DM-1.1	7/17/20	HL-30.11	1/15/21	TC-16.22	7/16/21	TC-81.22	7/17/20	800-2019	10/15/21		
BP-4.1	7/19/13	DM-1.2	7/16/21	HL-30.22	1/15/21	TC-17.11	7/16/21	TC-82.10	7/19/19	809	7/16/21		
BP-5.1	7/16/21	DM-1.3	7/18/14			TC-21.11	7/16/21	TC-83.10	1/17/20	825	1/17/20		
BP-7.1	7/17/20	DM-3.1	1/18/13	MT-95.31	7/19/19	TC-21.21	7/16/21	TC-83.20	7/21/17	831	10/21/16		
		DM-4.4	1/15/16	MT-95.32	4/19/19	TC-22.20	1/17/14	TC-84.20	10/18/13	832	10/19/18		
CB-2-2ABC	7/16/21			MT-95.60	4/19/19	TC-41.20	10/18/13	TC-85.10	4/17/20	895	4/18/14		
CB-3	7/16/21	MH-1	7/16/21	MT-97.10	4/19/19	TC-41.30	10/18/13	TC-85.20	7/20/18	907	10/18/19		
CB-3A	7/16/21	MH-3	7/16/21	MT-97.12	1/20/17	TC-41.40	10/18/13			909	7/16/21		
				MT-101.90	7/17/20	TC-41.41	7/19/19			916	10/16/20		
		RM-3.1	7/20/18	MT-105.10	1/17/20	TC-42.20	10/18/13			931	1/17/20		
						TC-52.10	10/18/13			995	7/17/15		
						TC-52.20	1/15/21						
						TC-65.10	1/17/14						
						TC-65.11	7/21/17						
						TC-71.10	7/16/21						

ENGINEERS SEAL:

 SHEETS 1-27
30-90
SIGNED: Robert Sabol
DATE: 8-3-2021

ENGINEERS SEAL:

 SHEETS 28-29
91-100
SIGNED: Scott K Nale
DATE: 7-29-2021

PLAN PREPARED BY:
Environmental Design Group
AKRON / CLEVELAND / COLUMBUS
450 GRANT ST., AKRON, OH 44311
P 330.775.1190 / F 330.815.1500
W ENVDESIGNGROUP.COM

APPROVED:
DATE: 9/3/21 DISTRICT DEPUTY DIRECTOR

APPROVED: _____
DATE: _____ DIRECTOR, DEPARTMENT OF TRANSPORTATION

E:\0001\20-00102-010 STA 172-10.86 (Jan Progr-ammatics)\11010 STA-172-10.86\Design\Roadway\Sheets\11010-GT001.dgn Sheet 7/27/2021 11:39:00 PM r sabol

FEDERAL PROJECT NO.
E191313

PID NO.
111010

CONSTRUCTION PROJECT NO.

RAILROAD INVOLVEMENT
NONE

STA-172-10.86

1
109

GENERAL

ROUNDING

THE ROUNDING AT SLOPE BREAKPOINTS SHOWN ON THE TYPICAL SECTIONS APPLIES TO ALL CROSS-SECTIONS EVEN THOUGH OTHERWISE SHOWN.

UTILITIES

LISTED BELOW ARE ALL UTILITIES LOCATED WITHIN THE PROJECT CONSTRUCTION LIMITS TOGETHER WITH THEIR RESPECTIVE OWNERS:

AEP
700 MORRISON RD
GAHANNA, OH 44230
ATTN: PAUL PAXTON
PH: 614-949-8883

CHARTER COMMUNICATIONS
5520 WHIPPLE AVE NW
NORTH CANTON, OH 44720
ATTN: RON ICKES
PH: 330-631-7485

AT&T - OSP ENGINEERING
50 W BOWERY ST, 6TH FLOOR
AKRON, OH 44308
ATTN: STEVEN HYLTON
PH: 330-631-7485

DOMINION ENERGY OHIO
320 SPRINGSIDE DR, STE 320
AKRON, OH 44333
ATTN: DOUGLAS SMITH
PH: 330-664-2529

STARK COUNTY METRO
SEWER DISTRICT
P.O. BOX 9972
CANTON, OH 44711
ATTN: TOM DAVIS
PH: 330-451-2303

CITY OF CANTON WATER
2664 HARRISBURG RD NE
CANTON, OH 44705
ATTN: JAMES BENEKOS, P.E., P.S.
PH: 330-438-6557

ODOT ELECTRICAL
2088 S. ARLINGTON RD
AKRON, OH 44306
ATTN: MICHELLE CHANEY
PH: 330-786-2267

EVERSTREAM SOLUTIONS
1228 EUCLID AVE
SUITE 250
CLEVELAND, OH 44115
ATTN: GIO REILLO
216-905-0780

THE LOCATION OF THE UNDERGROUND UTILITIES SHOWN ON THE PLANS ARE AS OBTAINED FROM THE OWNERS AS REQUIRED BY SECTION 153.64 O.R.C.

THE UNDERGROUND UTILITIES ON THIS PLAN HAVE BEEN LOCATED BY USING A SUBSURFACE UTILITY ENGINEERING COMPANY [SUE]. IF THERE ARE ANY DISCREPANCIES BETWEEN FIELD MARKINGS AND WHAT THE PLAN INDICATES, PLEASE CONTACT MATTHEW STEELE, DISTRICT UTILITY COORDINATOR 330-786-4832, PRIOR TO ANY SUBSURFACE WORK BEING INITIATED.

AT&T UTILITY COORDINATION

BASED ON RECORD DRAWINGS THERE ARE NO ANTICIPATED CONFLICTS WITH EXISTING AT&T DUCT BANKS AT PROPOSED STORM SEWER AND WATER LINE CROSSINGS. HOWEVER, A POTENTIAL CONFLICT MAY EXIST NEAR STA 579+36, LT. SEE SHEET 53 FOR DETAILS. THE CONTRACTOR SHALL CONTACT AT&T AT LEAST 48 HOURS BEFORE BEGINNING ANY EXCAVATION AT AT&T DUCT BANK CROSSINGS TO ALLOW AT&T TO HAVE AN INSPECTOR PRESENT DURING EXCAVATION AND INSTALLATION OF THE PROPOSED ITEMS AT THESE CROSSINGS.

DOMINION ENERGY OHIO UTILITY COORDINATION

THE RELOCATION OF THE EXISTING 8" STEEL GAS LINE ON THE SOUTH SIDE OF S.R. 172 WILL BE COMPLETED BY DOMINION ENERGY OHIO PRIOR TO CONSTRUCTION.

THE RELOCATION WORK FOR THE EXISTING 20" GAS LINE ON THE NORTH LEG OF PERRY DRIVE WILL BE COMPLETED BY DOMINION ENERGY OHIO PRIOR TO CONSTRUCTION.

WORK LIMITS

THE WORK LIMITS SHOWN ON THESE PLANS ARE FOR PHYSICAL CONSTRUCTION ONLY. PROVIDE THE INSTALLATION AND OPERATION OF ALL WORK ZONE TRAFFIC CONTROL AND WORK ZONE TRAFFIC CONTROL DEVICES REQUIRED BY THESE PLANS WHETHER INSIDE OR OUTSIDE THESE WORK LIMITS.

CONSTRUCTION NOISE

ACTIVITIES AND LAND USE ADJACENT TO THIS PROJECT MAY BE AFFECTED BY CONSTRUCTION NOISE. IN ORDER TO MINIMIZE ANY ADVERSE CONSTRUCTION NOISE IMPACTS, DO NOT OPERATE POWER-OPERATED CONSTRUCTION-TYPE DEVICES BETWEEN THE HOURS OF 8 P.M. AND 8 A.M. IN ADDITION, DO NOT OPERATE AT ANY TIME ANY DEVICE IN SUCH A MANNER THAT THE NOISE CREATED SUBSTANTIALLY EXCEEDS THE NOISE CUSTOMARILY AND NECESSARILY ATTENDANT TO THE REASONABLE AND EFFICIENT PERFORMANCE OF SUCH EQUIPMENT.

SURVEYING PARAMETERS

PRIMARY PROJECT CONTROL MONUMENTS GOVERN ALL POSITIONING ON ODOT PROJECTS. SEE SHEET 2 OF THE PLANS FOR A TABLE CONTAINING PROJECT CONTROL INFORMATION.

USE THE FOLLOWING PROJECT CONTROL, VERTICAL POSITIONING, AND HORIZONTAL POSITIONING PARAMETERS FOR ALL SURVEYING:

PROJECT CONTROL

POSITIONING METHOD: ODOT VRS
MONUMENT TYPE: B

VERTICAL POSITIONING

ORTHOMETRIC HEIGHT DATUM: NAVD88
GEOID: GEOID 12B

HORIZONTAL POSITIONING

REFERENCE FRAME: NAD83 (2011)
ELLIPSOID: GRS80
MAP PROJECTION: LAMBERT CONFORMAL CONIC
COORDINATE SYSTEM: OHIO STATE PLANE (NORTH)
COMBINED SCALE FACTOR: 0.99990498
ORIGIN OF COORDINATE SYSTEM: 0,0

USE THE POSITIONING METHODS AND MONUMENT TYPE USED IN THE ORIGINAL SURVEY TO RESTORE ALL MONUMENTS RELATED TO PRIMARY PROJECT CONTROL THAT ARE DAMAGED OR DESTROYED BY CONSTRUCTION ACTIVITIES. RESTORE THE DAMAGED OR DESTROYED MONUMENTS IN ACCORDANCE WITH CMS 623.

UNITS ARE IN U.S. SURVEY FEET. USE THE FOLLOWING CONVERSION FACTOR: 1 METER = 3.280833333 U.S. SURVEY FEET.

EXISTING PLANS

THE FOLLOWING EXISTING PLANS MAY BE INSPECTED IN THE ODOT DISTRICT 4 OFFICE AT 2088 S ARLINGTON RD. AKRON, OH 44306

STA-172-10.86, 1924
STA-172-14.210, PID 16520, 1999
STA-172-10.43, PID 86510, 2012
STA-MCRO-FY2018(A), PID 100870, 2018

CONSTRUCTION COORDINATION WITH UTILITY WORK

NO COMPENSABLE DELAYS WILL BE CONSIDERED DUE TO UTILITY RELOCATION INTERFERENCE. TO AVOID CONSTRUCTION DELAY DUE TO UTILITY CONSTRUCTION/RELOCATION, THE CONTRACTOR SHALL WORK IN AN AREA NOT AFFECTED BY ONGOING UTILITY WORK, AS APPROVED BY THE ENGINEER.

ROADWAY

CLEARING AND GRUBBING

THE DEPARTMENT HAS NOT MARKED INDIVIDUAL TREES AND STUMPS FOR REMOVAL. UNLESS SPECIFICALLY DESIGNATED AS "DO NOT DISTURB" IN THE PLANS, REMOVE ALL TREES AND STUMPS WITHIN THE CONSTRUCTION LIMITS UNDER THE LUMP SUM BID FOR ITEM 201 CLEARING AND GRUBBING.

UNSTABLE OR UNSUITABLE SOILS FOR PAVEMENT STABILIZATION

THE FOLLOWING ITEMS AND QUANTITIES ARE TO BE USED AS DIRECTED BY THE ENGINEER TO ADDRESS UNSTABLE OR UNSUITABLE SOILS ENCOUNTERED IN THE AREAS OF PAVEMENT CONSTRUCTION:

ITEM 204 - EXCAVATION OF SUBGRADE	41 CY
ITEM 204 - GRANULAR MATERIAL, TYPE B	41 CY
ITEM 204 - GEOTEXTILE FABRIC	122 SY

CURB RAMPS / DETECTABLE WARNINGS

UNLESS OTHERWISE DIRECTED BY THE ENGINEER, INSTALLATION OF THE CURB RAMPS / DETECTABLE WARNINGS WILL BE PERFORMED PRIOR TO MAINLINE RESURFACING.

ITEM 202 - REMOVAL, MISC.: BENCH

REMOVE EXISTING BENCH FOR SALVAGE BY SARTA. AFTER REMOVAL, CONTACT THE BELOW TO NOTIFY THE STORAGE LOCATION:

SARTA:
ALBERT HOGAN
TRANSPORTATION ROUTE COORDINATOR
PH: 800-379-3661
EMAIL: AHOGAN@SARTAONLINE.COM

IF SARTA DOES NOT WANT TO SALVAGE THE BENCH, DISPOSE OF MATERIALS AS SPECIFIED IN SECTION 105.17 OF THE CMS AT NO ADDITIONAL COST.

ALL EQUIPMENT, LABOR, TOOLS, MATERIALS, SUBMITTALS AND INCIDENTALS NECESSARY TO COMPLETE THIS ITEM SHALL BE INCLUDED IN THE UNIT BID PRICE PER EACH FOR ITEM 202 - REMOVAL, MISC.: BENCH.

ITEM 204 - PROOF ROLLING

THE FOLLOWING QUANTITY IS PROVIDED IN THE GENERAL SUMMARY TO ADDRESS LOCATIONS REQUIRING PROOF ROLLING.

ITEM 204 - PROOF ROLLING 2 HOURS

ITEM SPECIAL - SURVEY CONTROL VERIFICATION

THE CONTRACTOR SHALL PERFORM THIS WORK TO VERIFY THE PROVIDED SURVEY CONTROL. THE CONTRACTOR WILL PERFORM THE VERIFICATION USING ONE OF THE TWO METHODS BELOW DEPENDENT UPON THE CONTRACTOR'S CHOSEN MEANS OF SURVEY CONTROL TO BE USED ON THE PROJECT. THE WORK SHALL BE PERFORMED UNDER THE DIRECT SUPERVISION OF AN OHIO LICENSED SURVEYOR.

1) IF USING GPS DEVICES TO ESTABLISH AND OR PROVIDE SUPPLEMENTAL HORIZONTAL AND VERTICAL SURVEY CONTROL

A) LOCATE VERTICAL CONTROL POINTS PROVIDED IN THE PLANS AND PERFORM A DIFFERENTIAL LEVEL CIRCUIT.

B) PERFORM A SITE CALIBRATION UTILIZING THE AVAILABLE HORIZONTAL AND VERTICAL CONTROL POINTS PROVIDED IN THE PLAN.

C) PROVIDE A REPORT, SIGNED BY AN OHIO LICENSED SURVEYOR, TO THE PROJECT ENGINEERING COMPARING THE OBSERVED DATA TO THE PLAN DATA ALONG WITH A NARRATIVE DETAILING ANY DISCREPANCIES FOUND.

2) IF USING CONVENTIONAL SURVEY INSTRUMENTATION TO ESTABLISH AND OR PROVIDE SUPPLEMENTAL HORIZONTAL AND VERTICAL SURVEY CONTROL

A) LOCATE VERTICAL CONTROL POINTS PROVIDED IN THE PLANS AND PERFORM A DIFFERENTIAL LEVEL CIRCUIT.

B) LOCATE AND OBSERVE ANGLE AND DISTANCE TO ALL AVAILABLE HORIZONTAL CONTROL POINTS PROVIDED IN THE PLAN.

C) PROVIDE A REPORT, SIGNED BY AN OHIO LICENSED SURVEYOR, TO THE PROJECT ENGINEER COMPARING THE OBSERVED DATA TO THE PLAN DATA ALONG WITH A NARRATIVE DETAILING ANY DISCREPANCIES FOUND.

ALL MATERIALS, LABOR EQUIPMENT, TOOLS, AND INCIDENTALS NECESSARY TO COMPLETE THIS WORK SHALL BE INCLUDED IN THE LUMP SUM BID ITEM.

EROSION CONTROL

SEEDING AND MULCHING

THE FOLLOWING QUANTITIES ARE PROVIDED TO PROMOTE GROWTH AND CARE OF PERMANENT SEEDED AREAS:

653, TOPSOIL, FURNISHED AND PLACED	86 CU. YD.
659, REPAIR SEEDING AND MULCHING	39 SQ. YD.
659, COMMERCIAL FERTILIZER	0.11 TON
659, LIME	0.16 ACRE
659, WATER	5 M. GAL.

SEEDING AND MULCHING SHALL BE APPLIED TO ALL AREAS OF EXPOSED SOIL BETWEEN THE RIGHT-OF-WAY LINES, AND WITHIN THE CONSTRUCTION LIMITS FOR AREAS OUTSIDE THE RIGHT-OF-WAY LINES COVERED BY WORK AGREEMENT OR SLOPE EASEMENT. QUANTITY CALCULATIONS FOR SEEDING AND MULCHING ARE BASED ON THESE LIMITS.

E:\ODOT\20-0002-010 STA 172-10.86 (Jan Program\atics)\11010_STA-172-10.86\Design\Roadway\Sheets\11010_GND01.dgn Sheet 12/6/2021 11:30:18 AM rsabol

CALCULATED
SAC
CHECKED
RMS

GENERAL NOTES

STA -172-10.86

6
109

EROSION CONTROL (CONT.)

POST CONSTRUCTION STORM WATER TREATMENT

THIS PLAN UTILIZES STRUCTURAL BEST MANAGEMENT PRACTICES (BMP'S) FOR POST CONSTRUCTION STORM WATER TREATMENT.

MANUFACTURED WATER QUALITY STRUCTURE

THIS PLAN UTILIZES MANUFACTURED WATER QUALITY STRUCTURES FOR WATER QUALITY TREATMENT. AREAS HAVE BEEN SHOWN IN THE PLANS FOR PLACEMENT OF AN OFF-LINE SYSTEM. PAYMENT FOR THESE DEVICES SHALL BE MADE AT THE CONTRACT UNIT PRICE PER EACH FOR ITEM 895, MANUFACTURED WATER QUALITY STRUCTURE, TYPE 1.

DRAINAGE

CROSSINGS AND CONNECTIONS TO EXISTING PIPES AND UTILITIES

WHERE PLANS PROVIDE FOR A PROPOSED CONDUIT TO BE CONNECTED TO, OR CROSS OVER OR UNDER AN EXISTING SEWER OR UNDERGROUND UTILITY, THE CONTRACTOR SHALL LOCATE THE EXISTING PIPES OR UTILITIES BOTH AS TO LINE AND GRADE BEFORE STARTING TO LAY THE PROPOSED CONDUIT.

IF IT IS DETERMINED THAT THE ELEVATION OF THE EXISTING CONDUIT, OR EXISTING APPURTENANCE TO BE CONNECTED, DIFFERS FROM THE PLAN ELEVATION OR RESULTS IN A CHANGE IN THE PLAN CONDUIT SLOPE, THE ENGINEER SHALL BE NOTIFIED BEFORE STARTING CONSTRUCTION OF ANY PORTION OF THE PROPOSED CONDUIT WHICH WILL BE AFFECTED BY THE VARIANCE IN THE EXISTING ELEVATIONS.

IF IT IS DETERMINED THAT THE PROPOSED CONDUIT WILL INTERSECT AN EXISTING SEWER OR UNDERGROUND UTILITY IF CONSTRUCTED AS SHOWN ON THE PLAN, THE ENGINEER SHALL BE NOTIFIED BEFORE STARTING CONSTRUCTION OF ANY PORTION OF THE PROPOSED CONDUIT WHICH WOULD BE AFFECTED BY THE INTERFERENCE WITH AN EXISTING FACILITY.

PAYMENT FOR ALL THE OPERATIONS DESCRIBED ABOVE SHALL BE INCLUDED IN THE CONTRACT PRICE FOR THE PERTINENT 611 CONDUIT ITEM.

EXISTING SUBSURFACE DRAINAGE

PROVIDE UNOBSTRUCTED OUTLETS FOR ALL EXISTING UNDERDRAINS OR AGGREGATE DRAINS ENCOUNTERED DURING CONSTRUCTION.

UNDERDRAINS THAT CAN BE CONNECTED TO THE NEW OR EXISTING UNDERDRAINS AT THE END OF THE PROJECT LIMITS AS WELL AS ALL NECESSARY BENDS OR BRANCHES REQUIRED FOR CONNECTION ARE INCLUDED IN THE BASIS OF PAYMENT FOR UNCLASSIFIED PIPE UNDERDRAINS.

THE FOLLOWING ESTIMATED QUANTITIES HAVE BEEN INCLUDED IN THE GENERAL SUMMARY FOR THE WORK NOTED ABOVE:

611, 4" CONDUIT, TYPE F FOR UNDERDRAIN OUTLET 50 FT.
605, 4" UNCLASSIFIED PIPE UNDERDRAINS
WITH GEOTEXTILE FABRIC 100 FT.

UNDERDRAINS FOR PULLBOXES

REFERENCE IS MADE TO STANDARD DRAWING HL-30.11 FOR DETAILS OF DRAINING PULL BOXES. UNDERDRAINS FOR PULL BOXES SHALL BE USED AS DIRECTED BY THE ENGINEER AND SHALL BE PROVIDED WHERE THE LENGTH REQUIRED FOR A SATISFACTORY OUTLET DOES NOT EXCEED APPROXIMATELY 40 FEET. THE FOLLOWING ESTIMATED QUANTITY HAS BEEN INCLUDED IN THE GENERAL SUMMARY FOR THE WORK NOTED ABOVE:

611, 4" CONDUIT, TYPE F 160 FT.

DRAINAGE DISCHARGE CONTINUANCE

FURNISH A DRAINAGE DISCHARGE CONTINUANCE FOR ANY DRAINAGE DISCHARGE DISTURBED BY THE WORK AND NOT SHOWN IN THE PLANS. THE LOCATION, TYPE (CONDUIT OR SWALE), SIZE AND GRADE OF THE DRAINAGE DISCHARGE CONTINUANCE WILL BE AGREED TO BY THE ENGINEER

FURNISH AN INSPECTION WELL AT THE RIGHT OF WAY LINE IN ACCORDANCE WITH SCD DM-3.1 FOR EACH DRAINAGE DISCHARGE THAT OUTLETS THROUGH A CURB OPENING, OR INTO A STORM SEWER OR DRAINAGE STRUCTURE. THE COST IS INCLUDED IN ITEM 611, INSPECTION WELL.

FURNISH A WELL GRADED TRANSITION BETWEEN THE DITCH AND THE SWALE WHEN OUTLETTING A SWALE TO A DITCH. THE COST FOR THE GRADED TRANSITION IS INCLUDED IN ITEM 203, EMBANKMENT AS PER PLAN.

FURNISH AN EROSION CONTROL PAD AS SHOWN IN SCD DM-1.1 WHEN OUTLETTING A CONDUIT TO A DITCH. THE COST FOR THE EROSION CONTROL PAD IS INCLUDED IN ITEM 611, CONDUIT, MISC.: TYPE _ FOR DRAINAGE DISCHARGE CONTINUANCE.

FURNISH A DRILLED HOLE OR A CURB SECTION WITH A HOLE WHEN OUTLETTING A CONDUIT THROUGH A CURB OPENING. THE COST OF DRILLING, OR FURNISHING THE CURB SECTION WITH HOLE IS INCLUDED IN ITEM 611, CONDUIT, MISC.: TYPE _ FOR DRAINAGE DISCHARGE CONTINUANCE.

FURNISH A DRILLED CORE HOLE WHEN OUTLETTING INTO A STORM SEWER OR DRAINAGE STRUCTURE. THE COST OF THE DRILLED CORE HOLE IS INCLUDED IN ITEM 611, CONDUIT, MISC.: TYPE _ FOR DRAINAGE DISCHARGE CONTINUANCE.

DOCUMENTATION

THE CONTRACTOR SHALL FURNISH WRITTEN DOCUMENTATION TO THE ENGINEER AND TO THE DISTRICT R/W PERMIT OFFICE. THE DOCUMENTATION INCLUDES THE CONSTRUCTION PROJECT NUMBER, PID, COUNTY, ROUTE, SECTION, LATITUDE AND LONGITUDE OF THE DRAINAGE DISCHARGE AT THE R/W, THE NAME OF PROPERTY OWNER WITH ADDRESS, THE DATE THE DRAINAGE DISCHARGE WAS LOCATED, THE DATE THE DRAINAGE DISCHARGE CONTINUANCE WAS FURNISHED, A DETAILED DESCRIPTION OF THE WORK AND PICTURES OF THE DRAINAGE DISCHARGE CONTINUANCE (IN PDF OR JPEG FORMAT). THE DOCUMENTATION IS INCLUDED IN ITEM 611, CONDUIT, MISC.: TYPE _ FOR DRAINAGE DISCHARGE CONTINUANCE OR ITEM 203, EMBANKMENT AS PER PLAN.

DRAINAGE DISCHARGE CONTINUANCE REMOVAL THE ENGINEER MAY REQUIRE THE NEWLY INSTALLED DRAINAGE DISCHARGE CONTINUANCE TO BE REMOVED.

REMOVE THE NEWLY INSTALLED CONDUIT AND ANY EXISTING CONDUIT TO THE RIGHT OF WAY LINE. FOR CONDUIT THAT OUTLETS THROUGH THE CURB RESTORE THE CURB BY FILLING THE HOLE WITH CLASS QC 1 CONCRETE OR REPLACE THE CURB SECTION. FOR CONDUIT THAT OUTLETS TO A STORM SEWER OR DRAINAGE STRUCTURE LEAVE 6 INCHES PROTRUDING OUTSIDE OF THE CONDUIT. PLUG THE PROTRUDING CONDUIT WITH EITHER A MANUFACTURED CAP OR CLASS QC 1 CONCRETE. FOR CONDUIT THAT OUTLETS TO THE DITCH REMOVE THE EROSION CONTROL PAD. RESTORE ALL AREAS AS REQUIRED. PLUG THE EXISTING CONDUIT REGARDLESS OF SIZE AT THE RIGHT OF WAY LINE WITH CLASS QC 1 CONCRETE AND RESTORE ALL AREAS AS REQUIRED. ALL COSTS ARE INCLUDED IN ITEM 202, REMOVAL MISC. CONDUIT.

DAM THE SWALE THAT OUTLETS TO THE DITCH AT THE R/W AS DIRECTED BY THE ENGINEER. ALL COSTS ARE INCLUDED IN ITEM 203, EMBANKMENT AS PER PLAN.

REMOVE THE INSPECTION WELL AND RESTORE ALL AREAS AS REQUIRED. THE COST IS INCLUDED IN ITEM 202, REMOVAL MISC. INSPECTION WELL.

CONDUIT MATERIAL TYPES THE FOLLOWING CONDUIT MATERIAL TYPES MAY BE USED: 707.33, 707.41 NON-PERFORATED, 707.42, 707.43, 707.45, 707.46, 707.47, 707.51, AND 707.52 SDR35.

PAY ITEMS EACH OF THE PAY ITEMS LISTED BELOW FOR CONDUIT MISCELLANEOUS TYPES B, C, E AND F FOR DRAINAGE DISCHARGE CONTINUANCE INCLUDE CONDUIT SIZES 2 INCH TO 10 INCH. THERE IS NO COST DIFFERENTIATION FOR SIZE IN THESE PAY ITEMS.

THE FOLLOWING ESTIMATED QUANTITIES HAVE BEEN INCLUDED IN THE GENERAL SUMMARY FOR USE AS DIRECTED BY THE ENGINEER IN MAKING THE ABOVE DRAINAGE DISCHARGE CONTINUANCE:

ITEM 611, INSPECTION WELL	3 EACH
ITEM 611, CONDUIT, MISC.: TYPE B FOR DRAINAGE DISCHARGE CONTINUANCE	50 FT
ITEM 611, CONDUIT, MISC.: TYPE C FOR DRAINAGE DISCHARGE CONTINUANCE	50 FT.
ITEM 611, CONDUIT, MISC.: TYPE E FOR DRAINAGE DISCHARGE CONTINUANCE	50 FT.
ITEM 611, CONDUIT, MISC TYPE F FOR DRAINAGE DISCHARGE CONTINUANCE	50 FT.
ITEM 202, REMOVAL, MISC.: CONDUIT	50 FT.
ITEM 202, REMOVAL, MISC.: INSPECTION WELL	3 EACH
ITEM 203, EMBANKMENT, AS PER PLAN	10 CY

**ITEM 611 - CATCH BASIN NO. 3A, AS PER PLAN
ITEM 611 - CATCH BASIN NO. 3, AS PER PLAN**

ALL PROVISIONS OF ITEM 611 AND ODOT STANDARD CONSTRUCTION DRAWINGS CB-2.1 AND CB-2.2 APPLY WITH THE ADDITION THAT THE CASTING SHALL BE FABRICATED TO ACCOMMODATE A 4" CURB HEIGHT.

ITEM 611 - MANHOLE ADJUSTED TO GRADE, AS PER PLAN

IN ADDITION TO THE REQUIREMENTS OF CMS 611.10.D FOR MANHOLES THE CONTRACTOR WILL MAKE A CLEAN CIRCULAR CUT AROUND THE CASTING (A MINIMUM OF 1'-0" OUTSIDE THE CASTING) AND REMOVE AND DISCARD THE EXISTING CASTING. INSTALL A NEW CASTING TO GRADE (ACCORDING TO TOLERANCES AS SHOWN ON STANDARD CONSTRUCTION DRAWING BP-3.1) AFTER THE PAVEMENT SURFACE COURSE HAS BEEN REPLACED.

CMS 499 CLASS QCMS CONCRETE (DYE THE CONCRETE SUCH THAT ITS COLOR CLOSELY MATCHES THE COLOR OF THE SURROUNDING PAVEMENT) WILL BE USED FOR BACKFILLING THE FULL PAVEMENT SECTION AND THE JOINT BETWEEN THE ASPHALT AND CONCRETE WILL BE SEALED WITH CMS 702.01 PG BINDER. EPOXY COATED REBAR SHALL BE PLACED IN THE CONCRETE AT 6" MAXIMUM ON CENTER AND A MINIMUM OF 3.5" CLEARANCE FROM THE TOP, BOTTOM AND SIDES. THE CONCRETE WILL BE VIBRATED SUFFICIENTLY TO ELIMINATE AIR POCKETS UNDER THE FRAME.

PAYMENT WILL INCLUDE REMOVAL OF THE EXISTING MATERIAL, INSTALLATION AND FURNISHING OF A NEW CASTING, AND ALL LABOR AND MATERIALS REQUIRED TO COMPLETE THIS ITEM OF WORK AS DESCRIBED.

ITEM 611 - CATCH BASIN NO. 2-2C, AS PER PLAN

ALL PROVISIONS OF ITEM 611 AND ODOT STANDARD CONSTRUCTION DRAWINGS CB-2.1 AND CB-2.2 APPLY WITH THE ADDITION THAT THE GRATE SHALL BE BICYCLE SAFE. FURNISH NEENAH NO. R-4859-S OR E.J. NO. 5110M3 (00511043) GRATES OR APPROVED EQUALS.

ITEM 611 - SLOTTED DRAIN, TYPE 1, 8"

THIS ITEM SHALL CONSIST OF 8 INCH DIAMETER SLOTTED DRAIN ALUMINUM COATED STEEL CONDUIT 707.01 WITH 8 INCH TRAPEZOIDAL GALVANIZED SOLID BAR GRATE AS APPROVED BY THE ENGINEER. ALL COSTS FOR LABOR AND MATERIALS, INCLUDING TYPE 2 BEDDING, AND BACKFILLING AS DETAILED ON STANDARD CONSTRUCTION DRAWING DM-1.3 SHALL BE INCLUDED IN THE PRICE BID PER FOOT FOR ITEM 611 - SLOTTED DRAIN, TYPE 1, 8".

ITEM SPECIAL - PIPE CLEANOUT, 24" AND UNDER

THIS WORK SHALL CONSIST OF REMOVING SEDIMENT AND DEBRIS FROM THE EXISTING DRAINAGE CONDUITS SPECIFIED IN THE PLANS. ALL MATERIAL REMOVED SHALL BE DISPOSED OF AS PER 105.16 AND 105.17. ALL SEWERS SHALL BE CLEANED OUT TO THE SATISFACTION OF THE ENGINEER.

CLEANOUT OF THE PIPE SHALL BE PAID FOR AT THE UNIT PRICE BID FOR ITEM SPECIAL - PIPE CLEANOUT, 24" AND UNDER. THIS PRICE SHALL INCLUDE THE COST FOR MATERIAL, EQUIPMENT, LABOR, AND ALL INCIDENTALS REQUIRED TO COMPLETE THE CLEANOUT.

SANITARY SEWER

SANITARY SEWER MANHOLE ACCESS

SANITARY SEWER MANHOLES SHALL NOT BE BURIED OR PAVED OVER. ACCESS TO SANITARY MANHOLES SHALL NOT BE IMPEDED AT ANY TIME.

ITEM 611 - MANHOLE ADJUSTED TO GRADE, AS PER PLAN (SANITARY)

THIS ITEM SHALL CONSIST OF ADJUSTING SANITARY MANHOLES TO GRADE PER ITEM 611 WITH THE FOLLOWING MODIFICATIONS:

SANITARY SEWERS AND APPURTENANCES SHALL BE CONSTRUCTED IN ACCORDANCE WITH STARK COUNTY SANITARY ENGINEERING DEPARTMENT SPECIFICATIONS AND DETAILS IN EFFECT AT THE TIME OF CONSTRUCTION. DETAILS PROVIDED WITHIN THESE PLANS ARE FOR REFERENCE ONLY. CONTRACTOR SHALL VERIFY CURRENT EDITIONS OF DETAILS AT TIME OF CONSTRUCTION.

IN ADDITION TO THE REQUIREMENTS OF CMS 611.10.D FOR MANHOLES AND STARK COUNTY SANITARY ENGINEERING DEPARTMENT SPECIFICATIONS AND DETAILS, THE CONTRACTOR WILL MAKE A CLEAN CIRCULAR CUT AROUND THE CASTING (A MINIMUM OF 1'-0" OUTSIDE THE CASTING) AND REMOVE AND DISCARD THE EXISTING CASTING. INSTALL A NEW CASTING TO GRADE (ACCORDING TO TOLERANCES AS SHOWN ON STANDARD CONSTRUCTION DRAWING BP-3.1 AND STARK COUNTY DETAILS) AFTER THE PAVEMENT SURFACE COURSE HAS BEEN REPLACED.

CMS 499 CLASS QCMS CONCRETE (DYE THE CONCRETE SUCH THAT ITS COLOR CLOSELY MATCHES THE COLOR OF THE SURROUNDING PAVEMENT) WILL BE USED FOR BACKFILLING THE FULL PAVEMENT SECTION AND THE JOINT BETWEEN THE ASPHALT AND CONCRETE WILL BE SEALED WITH CMS 702.01 PG BINDER. EPOXY COATED REBAR SHALL BE PLACED IN THE CONCRETE AT 6" MAXIMUM ON CENTER AND A MINIMUM OF 3.5" CLEARANCE FROM THE TOP, BOTTOM AND SIDES. THE CONCRETE WILL BE VIBRATED SUFFICIENTLY TO ELIMINATE AIR POCKETS UNDER THE FRAME.

CONTRACTOR SHALL SCHEDULE INSPECTION BY STARK COUNTY SANITARY ENGINEERING DEPARTMENT FOR THE ADJUSTMENTS TO GRADE BY TELEPHONE AT 330-451-2304 AT LEAST 72 HOURS IN ADVANCE OF THE WORK BEING PERFORMED.

PAYMENT WILL INCLUDE REMOVAL OF THE EXISTING MATERIAL, INSTALLATION AND FURNISHING OF A NEW CASTING, AND ALL LABOR AND MATERIALS REQUIRED TO COMPLETE THIS ITEM OF WORK AS DESCRIBED.

CALCULATED
SAC
CHECKED
RMS

GENERAL NOTES

STA-172-10.86

7
109

E:\ODOT\20-0002-010 STA 172-10.86 (Jan Program\mat\cs)\11010_STA-172-10.86\Design\Roadway\Sheets\11010_GN002.dgn Sheet 11/23/2021 7:31:13 AM r.sabol

E:\0001\20-0002-010 STA 172-10.86 (Jan Program\mat\cs)\11010_STA-172-10.86\Design\Roadway\Sheets\11010_GN005.dgn Sheet 12/16/2021 11:32:20 AM r.sabol

ITEM SPECIAL - REINFORCEMENT MESH FOR SAW CUT JOINTS

DESCRIPTION:

THIS WORK CONSISTS OF PLACEMENT OF A SELF ADHESIVE GLASS FIBER MESH OVER SAW CUT JOINTS WHERE THERE IS ASPHALT PAVEMENT ON BOTH SIDES OF THE JOINT. THE MESH SHALL BE PLACED PRIOR TO PLACEMENT OF THE FINAL ASPHALT CONCRETE.

FURNISH GLASGRID FIBERGLASS REINFORCEMENT WITH MODIFIED POLYMER COATING AND PRESSURE-SENSITIVE ADHESIVE BACKING BONDED TO A NONWOVEN POLYPROPYLENE MEETING THE FOLLOWING PROPERTIES:

PROPERTIES	Glasgrid CG100
MATERIAL WIDTH	2.5 FT
MATERIAL - SELF ADHESIVE FIBERGLASS STRAND COATED WITH ELASTOMERIC POLYMER ASTM D4595	25% MINIMUM DRY PICKUP
TENSILE STRENGTH ASTM D4595	655 x 655 ± 85 LBS/IN
TENSILE ELONGATION ASTM D4595	2.5 ± 0.5%
MELTING POINT ASTM D276	>450°F
MASS/UNIT AREA ASTM D5261-92	16 OZ/SQ YD
GRID PATTERN	1.0 IN x 1.0 IN

BEFORE INSTALLATION SUBMIT A LETTER TO THE PROJECT ENGINEER WITH A STATEMENT CERTIFYING MATERIAL RECEIVED MEETS THE ABOVE PROPERTIES. SUBMIT TO THE PROJECT ENGINEER ACTUAL DATED (SALES FLYER DATA NOT ACCEPTABLE) TEST DATA WITH THE CERTIFICATION LETTER.

CONSTRUCTION:

PERFORM ALL REQUIRED REPAIRS PRIOR TO PLACING MESH.

MESH SHALL BE PLACED EITHER ON THE PLANED SURFACE OR BETWEEN INTERMEDIATE/LEVELING COURSE LIFTS TO ENSURE A MINIMUM 1.5" COMPACTED ASPHALT OVERLAY ON THE MESH, OR AS DIRECTED BY THE ENGINEER.

ENSURE ALL AREAS WHERE THE MESH IS TO BE PLACED ARE FREE OF ALL DIRT AND OTHER LOOSE MATERIALS BY SWEEPING OR OTHER APPROVED METHOD. PLACE NON-TRACKING TACK COAT AT RATE SPECIFIED IN CMS AND WAIT 2 HOURS BEFORE PLACING THE MESH ON A PAVEMENT SURFACE THAT IS BETWEEN 40°F AND 140°F.

PLACE MESH UNDER TENSION TO PREVENT RIPPLING. REMOVE RIPPLES BY PULLING, OR IF NECESSARY (IN CURVES FOR EXAMPLE), BY CUTTING AND FLATTENING THE MESH. OVERLAP TRANSVERSE JOINTS OF THE MESH 3 TO 6 INCHES. OVERLAP LONGITUDINAL JOINTS OF THE MESH BY 1 INCH MINIMUM. ROLL THE MESH SURFACE 2 PASSES WITH A RUBBER COATED DRUM ROLLER, RUBBER TIRE ROLLER OR OTHER METHOD ACCEPTABLE TO THE MANUFACTURER. CLEAN RUBBER ROLLER IF BUILDUP ON THE RUBBER SURFACE INTERFERES WITH MESH PLACEMENT. DO NOT USE A STEEL DRUM ROLLER. PLACED MESH WILL HANDLE SPEED CONTROLLED EMERGENCY OR CONSTRUCTION TRAFFIC BUT DAMAGED SECTIONS MUST BE REMOVED AND/OR REPAIRED, AT THE CONTRACTORS EXPENSE. DO NOT ALLOW MUD OR OTHER MATERIAL TO COLLECT ON THE MESH PRIOR TO ASPHALT CONCRETE PLACEMENT. COVER MESH WITH ASPHALT CONCRETE THE SAME DAY UNLESS WEATHER BECOMES UNSUITABLE.

MEASUREMENT:

MEASURE MESH PLACEMENT BY THE LINEAL FEAT OF JOINT COVERED. DO NOT ALLOW FOR MESH OVERLAP.

PAYMENT:

THE DEPARTMENT WILL PAY FOR ACCEPTED QUANTITIES, COMPLETED IN PLACE, AT THE CONTRACT PRICE, AS DESCRIBED ABOVE, AS FOLLOWS:

ITEM	UNIT DESCRIPTION
SPECIAL	FT REINFORCEMENT MESH FOR SAW CUT JOINTS

A QUANTITY HAS BEEN CALCULATED FOR THIS WORK IN THE OFFICE CALCULATIONS AND IS CARRIED TO THE GENERAL SUMMARY.

ITEM 632 - TEST HOLE PERFORMED

IF A TEST HOLE CONFIRMS THE FIBER OPTIC LINE IS FOUND TO BE IN CONFLICT WITH THE PROPOSED STORM SEWER, THE CONTRACTOR SH ALL CONTACT AT&T. THE CONTRACTOR SHALL GIVE THREE (3) DAYS NOTICE TO AT&T AND ALLOW AT&T ACCESS TO THE SITE TO PERFORM A LOWERING OF THE EXISTING FIBER LINES. ALLOW TEN (10) WORKING DAYS FOR THE LOWERING IF NECESSARY.

CONTRACTOR TO PERFORM TEST HOLE AS EARLY AS POSSIBLE IN THE CONSTRUCTION SCHEDULE TO MINIMIZE PROJECT DELAYS DUE TO RELOCATION.

THE WORK WILL INCLUDE BACKFILLING, COMPACTING, AND RESTORATION OF THE EXCAVATION TO THE SITE'S ORIGINAL CONDITION. EXCAVATIONS SHALL NOT BE LEFT OPEN OVERNIGHT. PAYMENT FOR THIS ITEM SHALL BE AT THE UNIT PRICE BID PER EACH ITEM 632 TEST HOLE PERFORMED.

THE FOLLOWING QUANTITY HAS BEEN CARRIED TO THE GENERAL SUMMARY FOR USE IN LOCATIONS IDENTIFIED IN THE PLANS.

ITEM 632 - TEST HOLE PERFORMED	1 EACH
--------------------------------	--------

CALCULATED
SAC
CHECKED
RMS

GENERAL NOTES

STA - 172 - 10.86

MAINTENANCE OF TRAFFIC

ITEM 614, MAINTAINING TRAFFIC

THIS ITEM SHALL CONSIST OF MAINTENANCE OF TRAFFIC ON EXISTING ROADWAYS AND RAMPS IN ACCORDANCE WITH THE OHIO MANUAL OF UNIFORM TRAFFIC CONTROL DEVICES FOR STREETS AND HIGHWAYS, CURRENT EDITION, LATEST REVISION, THE SPECIFICATIONS AND THE FOLLOWING:

1. A MINIMUM OF ONE TEN FOOT LANE IN EACH DIRECTION SHALL BE MAINTAINED ON THE EXISTING PAVEMENT OR COMPLETED PAVEMENT DURING CONSTRUCTION OF THE WORK.
2. THE CONTRACTOR SHALL INFORM THE DISTRICT OFFICE (330) 786-2208, EIGHTEEN (18) DAYS PRIOR TO THE BEGINNING OF WORK.
3. IN ADDITION TO THE REQUIREMENTS OF 614.11 WORK ZONE PAVEMENT MARKINGS, AT THE END OF EACH DAY OF WORK, THE CONTRACTOR SHALL REPLACE (WITH WORK ZONE MARKINGS) ALL LANE, CENTER, STOP OR CHANNELIZING LINES THAT WERE REMOVED OR COVERED DURING THE PAVEMENT REMOVAL OR PLACEMENT OPERATIONS. QUANTITIES FOR SUCH PLACEMENT ARE CARRIED AS PART OF THE ITEMS LISTED UNDER 614 WORK ZONE PAVEMENT MARKINGS.
4. A QUANTITY OF 5 CU. YDS. OF ITEM 614 ASPHALT CONCRETE FOR MAINTAINING TRAFFIC SHALL BE PROVIDED FOR USE IN MAINTAINING PAVEMENT, SHOULDERS AND OTHER LOCATIONS AS DIRECTED BY THE ENGINEER.

5. PRIOR TO OPENING TO TRAFFIC EACH LANE SHALL BE IN A SAFE, PASSABLE CONDITION. ALL TRANSVERSE JOINTS SHALL EXTEND ACROSS THE FULL LANE AND SHOULDER WIDTH AND EACH LANE SHALL BE FREE FROM UNEVEN LONGITUDINAL JOINTS. THE CONTRACTOR SHALL PROVIDE ASPHALT WEDGES FOR TRANSVERSE JOINTS WHEREVER THERE ARE PAVEMENT ELEVATION DIFFERENCES.

6. THE CONTRACTOR SHALL PLACE THE SIGNS: W8-1 [BUMP] PER OMUTCD 2C.28; W8-11 [UNEVEN LANES] PER OMUTCD 6F.45; AND W6-3 [TWO-WAY TRAFFIC] PER OMUTCD 6F.32. PAYMENT FOR THESE SIGNS SHALL BE INCIDENTAL TO THE LUMP SUM ITEM 614-MAINTAINING TRAFFIC. A QUANTITY OF ITEM 614 WORK ZONE MARKING SIGNS HAS BEEN INCLUDED IN THE PLANS PER CMS 614.04.

ALL WORK AND TRAFFIC CONTROL DEVICES SHALL BE IN ACCORDANCE WITH 614 AND OTHER APPLICABLE PORTIONS OF THE SPECIFICATIONS, AS WELL AS THE OHIO MANUAL OF UNIFORM TRAFFIC CONTROL DEVICES, CURRENT EDITION, LATEST REVISION.

IF IT IS NECESSARY TO STOP ALL TRAFFIC FOR THE ERECTION OF SPAN WIRE, THE WORK SHALL BE SO ARRANGED THAT THE STOPPAGE IS LESS THAN TEN (10) MINUTES IN ANY ONE (1) THIRTY (30) MINUTE PERIOD. NO STOPPAGE OF TRAFFIC SHALL OCCUR FOR THE ERECTION OF SIGNAL SUPPORTS, CUTTING AND INSTALLING LOOP DETECTOR WIRE, OR HANGING SPAN WIRE AND SIGNAL HEADS, WITHOUT A LAW ENFORCEMENT OFFICER WITH A PATROL CAR AT THE SITE FOR ASSISTANCE IN CONTROLLING TRAFFIC. IT SHALL BE THE CONTRACTOR'S RESPONSIBILITY TO PROVIDE THE SERVICES AND SCHEDULING OF SAID LAW ENFORCEMENT OFFICER WITH PATROL CAR.

THE CONTRACTOR SHALL FURNISH AND MAINTAIN ALL FLAGS, FLAGGERS, WATCHERS, BARRICADES, SIGNS, SIGN SUPPORTS AND INCIDENTALS RELATED TO TRAFFIC CONTROL.

SIGNS FURNISHED SHALL BE IN NEW OR LIKE NEW CONDITIONS. LIKE NEW SIGNS SHALL BE SUBJECT TO THE APPROVAL OF THE PROJECT ENGINEER. THE CONTRACTOR SHALL BE RESPONSIBLE AT ALL TIMES FOR PROVIDING AND MAINTAINING LIGHTS, SIGNS, AND BARRICADES FOR THE MAINTENANCE OF TRAFFIC AND SAFETY OF HIS/HER WORK AT THE LOCATIONS SHOWN ON THESE PLANS OR AS DIRECTED BY THE ENGINEER.

TWO-WAY TRAFFIC ON A MINIMUM OF TWO 10-FOOT LANES SHALL BE MAINTAINED BY USE OF THE EXISTING PAVEMENT.

NO LANE CLOSURE SHALL BE IMPLEMENTED DURING THE HOURS OF 6:00am TO 9:00am OR 4:00pm TO 6:00pm WEEKDAYS. ALL ADVANCE WARNING SIGNS FOR ANY CONDITION WHICH RESTRICTS TRAFFIC SHALL BE ERECTED BEFORE ANY SUCH RESTRICTION IS PUT INTO EFFECT. ALL SUCH SIGNS SHALL BE COVERED OR REMOVED FROM THE VIEW OF TRAFFIC WHEN THEY ARE NOT APPLICABLE, AS DETERMINED BY THE ENGINEER. FOR WORK WHICH IS CONFINED TO THE SHOULDER, TRAFFIC CONTROL SHALL CONFORM TO PLATES 6H-1, 6H-3 AND 6H-4 OF THE OHIO MANUAL OF UNIFORM TRAFFIC CONTROL DEVICES (OMUTCD).

IF THE CONTRACTOR FAILS TO COMPLY WITH THE PROVISIONS FOR TRAFFIC CONTROL AS SET FORTH IN THESE PLANS AND PROVISIONS OF THE OMUTCD AND THE FAILURE RESULTS IN A CONDITION AT THE WORK SITE WHICH IS UNSAFE FOR TRAFFIC, THE ENGINEER SHALL SUSPEND WORK UNTIL THE CONTRACTOR COMPLIES WITH THE NECESSARY REQUIREMENTS.

NO WORK SHALL BE PERFORMED AND ALL EXISTING LANES SHALL BE OPEN TO TRAFFIC DURING THE FOLLOWING DESIGNATED HOLIDAYS OR EVENTS:

CHRISTMAS	FOURTH OF JULY
NEW YEAR'S	LABOR DAY
MEMORIAL DAY	THANKSGIVING
STARK COUNTY FAIR	
FOOTBALL HALL OF FAME WEEKEND	

THE PERIOD OF TIME THAT THE LANES ARE TO BE OPEN DEPENDS ON THE DAY OF THE WEEK ON WHICH THE HOLIDAY OR EVENT FALLS. THE FOLLOWING SCHEDULE SHALL BE USED TO DETERMINE THIS PERIOD:

DAY OF HOLIDAY OR EVENT	TIME ALL LANES MUST BE OPEN TO TRAFFIC
SUNDAY	12:00N FRIDAY THROUGH 6:00AM MONDAY
MONDAY	12:00N FRIDAY THROUGH 6:00AM TUESDAY
TUESDAY	12:00N MONDAY THROUGH 6:00AM WEDNESDAY
WEDNESDAY	12:00N TUESDAY THROUGH 6:00AM THURSDAY
THURSDAY	12:00N WEDNESDAY THROUGH 6:00AM FRIDAY
THURSDAY	(THANKSGIVING ONLY) 6:00AM WEDNESDAY THROUGH 6:00AM MONDAY
FRIDAY	12:00N THURSDAY THROUGH 6:00AM MONDAY
SATURDAY	12:00N FRIDAY THROUGH 6:00AM MONDAY

SHOULD THE CONTRACTOR FAIL TO MEET ANY OF THESE REQUIREMENTS, THE CONTRACTOR SHALL BE ASSESSED A DISINCENTIVE IN THE AMOUNT OF \$5000/DAY THE ABOVE DESCRIBED LANE CLOSURE RESTRICTIONS ARE VIOLATED. NO EXTENSIONS OF THE TIME SHALL BE GRANTED FOR DELAYS IN MATERIAL DELIVERIES, UNLESS SUCH DELAYS ARE INDUSTRY WIDE, OR FOR LABOR STRIKES, UNLESS SUCH STRIKES ARE AREA-WIDE.

A MINIMUM OF ONE LANE OF TRAFFIC IN EACH DIRECTION SHALL BE MAINTAINED AT ALL TIMES. DETOURS AS SHOWN ON SHEETS 14, 17, 25 SHALL BE LIMITED TO 21 CONSECUTIVE CALENDAR DAYS. A DISINCENTIVE SHALL BE ASSESSED IN THE AMOUNT OF \$3000 PER DAY FOR EACH CALENDAR DAY THE MAXIMUM DETOUR DURATION IS EXCEEDED.

ALL WORK AND TRAFFIC CONTROL DEVICES SHALL BE IN ACCORDANCE WITH C&MS 614 AND OTHER APPLICABLE PORTIONS OF THE SPECIFICATIONS, AS WELL AS THE OHIO MANUAL OF UNIFORM TRAFFIC CONTROL DEVICES. PAYMENT FOR ALL LABOR, EQUIPMENT AND MATERIALS SHALL BE INCLUDED IN THE LUMP SUM CONTRACT PRICE FOR ITEM 614, MAINTAINING TRAFFIC, UNLESS SEPARATELY ITEMIZED IN THE PLAN.

ADVANCED NOTICE TO PAVE

THE CONTRACTOR SHALL SUBMIT FOR APPROVAL TO THE DISTRICT CONSTRUCTION ENGINEER A DETAILED SCHEDULE 15 DAYS PRIOR TO THE PLACEMENT OF THE OVERLAY COURSES, ON HOW THEY PROPOSE TO EXECUTE THE PAVING OPERATIONS. THE DETAILS SHALL SHOW THE ORDER OF PERFORMANCE OF EACH STAGE (START TO FINISH) OF THE WORK INCLUDING THE MAINTENANCE OF TRAFFIC THAT WILL BE USED.

PLACEMENT OF ASPHALT CONCRETE

TWO-WAY TRAFFIC SHALL BE MAINTAINED AT ALL TIMES EXCEPT THAT ONE-WAY TRAFFIC WILL BE PERMITTED FOR MINIMUM PERIODS OF TIME CONSISTENT WITH THE REQUIREMENTS OF THE SPECIFICATIONS FOR PROTECTION OF COMPLETED ASPHALT CONCRETE COURSES.

TRENCH FOR WIDENING

TRENCH EXCAVATION FOR BASE WIDENING SHALL BE ONLY ON ONE SIDE OF THE PAVEMENT AT A TIME. THE OPEN TRENCH SHALL BE ADEQUATELY MAINTAINED AND PROTECTED WITH DRUMS OR BARRICADES AT ALL TIMES. PLACEMENT OF PROPOSED SUBBASE AND BASE MATERIAL SHALL FOLLOW AS CLOSELY AS POSSIBLE BEHIND EXCAVATION OPERATIONS. THE LENGTH OF WIDENING TRENCH WHICH IS OPEN AT ANY ONE TIME SHALL BE HELD TO A MINIMUM AND SHALL AT ALL TIMES BE SUBJECT TO APPROVAL OF THE ENGINEER.

DUST CONTROL

THE CONTRACTOR SHALL FURNISH AND APPLY WATER FOR DUST CONTROL AS DIRECTED BY THE ENGINEER. THE FOLLOWING ESTIMATED QUANTITIES HAVE BEEN INCLUDED FOR DUST CONTROL PURPOSES:

ITEM 616, WATER 8 M. GAL.

WORK ZONE MARKINGS AND SIGNS

THE FOLLOWING ESTIMATED QUANTITIES HAVE BEEN CARRIED TO THE GENERAL SUMMARY FOR USE AT LOCATIONS IDENTIFIED BY THE ENGINEER FOR WORK ZONE PAVEMENT MARKINGS AND SIGNS PER THE REQUIREMENTS OF C&MS 614.04 AND 614.11.

ITEM 614, WORK ZONE MARKING SIGN	10 EACH
ITEM 614, WORK ZONE LANE LINE, CLASS I, 6", 642 PAINT	0.10 MILE
ITEM 614, WORK ZONE CENTER LINE, CLASS I, 642 PAINT	0.10 MILE
ITEM 614, WORK ZONE EDGE LINE, CLASS I, 6", 642 PAINT	0.20 MILE
ITEM 614, WORK ZONE CHANNELIZING LINE, CLASS I, 8", 642 PAINT	150 FT
ITEM 614, WORK ZONE STOP LINE, CLASS I, 642 PAINT	50 FT
ITEM 614, WORK ZONE ARROW, CLASS I, 642 PAINT	4 EACH
ITEM 614, WORK ZONE LANE LINE, CLASS III, 6", 642 PAINT	0.46 MILE
ITEM 614, WORK ZONE CENTER LINE, CLASS III, 642 PAINT	0.58 MILE
ITEM 614, WORK ZONE EDGE LINE, CLASS III, 6", 642 PAINT	0.27 MILE
ITEM 614, WORK ZONE CHANNELIZING LINE, CLASS III, 8", 642 PAINT	1407 FT
ITEM 614, WORK ZONE STOP LINE, CLASS III, 642 PAINT	162 FT

DETOUR SIGNING

ALL SIGNING AND WORK ZONE DEVICES REQUIRED FOR ESTABLISHING THE DETOUR ROUTE(S) AS INDICATED IN THESE PLANS SHALL BE FURNISHED, ERECTED, MAINTAINED, AND SUBSEQUENTLY REMOVED BY THE CONTRACTOR. PAYMENT FOR ALL WORK ASSOCIATED WITH THE DETOUR SHALL BE INCLUDED UNDER THE LUMP SUM BID FOR ITEM 614, DETOUR SIGNING.

TRAFFIC CONTROL INSPECTOR

THE CONTRACTOR SHALL DESIGNATE AN INDIVIDUAL OTHER THAN THE SUPERINTENDENT AND SUBJECT TO THE APPROVAL OF THE ENGINEER, TO CONTINUOUSLY INSPECT ALL TRAFFIC CONTROL DEVICES WHENEVER CONSTRUCTION WORK IS BEING PERFORMED WITHIN THE WORK LIMITS OF THE PROJECT. THE DESIGNATED INDIVIDUAL SHALL ALSO INSPECT ALL TRAFFIC DEVICES AT THE BEGINNING AND AT THE END OF EACH WORK DAY. THE DESIGNATED INDIVIDUAL OR A QUALIFIED REPRESENTATIVE SHALL ALSO BE AVAILABLE ON AN AROUND THE CLOCK BASIS TO REPAIR AND/OR REPLACE DAMAGED OR MISSING TRAFFIC CONTROL DEVICES. THESE INDIVIDUALS SHALL BE EQUIPPED WITH CELLULAR PHONES AND THEIR NAMES AND PHONE NUMBERS SHALL BE GIVEN TO THE PROJECT ENGINEER AT THE PRE-CONSTRUCTION MEETING. THE DESIGNATED INDIVIDUAL SHALL HAVE NO OTHER CONSTRUCTION RELATED DUTIES. PAYMENT FOR THE SERVICES OF THE TRAFFIC CONTROL INSPECTOR SHALL BE INCLUDED IN THE LUMP SUM PRICE BID FOR ITEM 614 MAINTAINING TRAFFIC.

ITEM SPECIAL, WORK ZONE TRAFFIC SIGNAL

THIS ITEM SHALL BE USED ONLY WITH THE PRIOR WRITTEN APPROVAL OF THE ENGINEER. THIS ITEM SHALL INCLUDE ALL WORK REQUIRED TO CONSTRUCT, POWER, OPERATE, MAINTAIN, AND SUBSEQUENTLY REMOVE A TEMPORARY TRAFFIC SIGNAL INSTALLATION. TRAFFIC SIGNAL PHASING AND TIMING SHALL BE THE SAME AS THE EXISTING TRAFFIC SIGNAL INSTALLATION OR AS DIRECTED BY THE ENGINEER. EACH LOCATION SHALL BE CONSIDERED ONE LOCATION REGARDLESS OF ANY MODIFICATIONS REQUIRED BY THE ENGINEER.

PAYMENT FOR THIS ITEM SHALL BE PAID AT THE UNIT PRICE BID FOR ITEM SPECIAL WORK ZONE TRAFFIC SIGNAL AND SHALL INCLUDE ALL MATERIAL, EQUIPMENT, LABOR, AND INCIDENTALS REQUIRED TO COMPLETE THE WORK.

THE FOLLOWING ESTIMATED QUANTITIES HAVE BEEN INCLUDED IN THE GENERAL SUMMARY FOR USE AS DETERMINED BY THE ENGINEER FOR THE MAINTENANCE OF TRAFFIC:

SPECIAL, WORK ZONE TRAFFIC SIGNAL 1 EACH

TIME LIMITATION, TRAFFIC ON A MILLED SURFACE

THE MAXIMUM ALLOWABLE TIME FOR TRAFFIC TO BE PLACED ON A MILLED SURFACE SHALL BE 7 CONSECUTIVE DAYS. SHOULD THE CONTRACTOR FAIL TO MEET THIS REQUIREMENT, THE CONTRACTOR SHALL BE ASSESSED A DISINCENTIVE IN THE AMOUNT OF \$3,000 PER DAY THAT TRAFFIC IS PLACED ON A MILLED SURFACE BEYOND THE SPECIFIED LIMIT.

ITEM 614, MAINTAINING TRAFFIC (WINTER TIME LIMITATIONS)

ALL EXISTING LANES, INCLUDING RAMPS, SHALL BE OPEN AND AVAILABLE TO TRAFFIC IN THE ORIGINAL OR PROPOSED FINAL ALIGNMENT BETWEEN OCTOBER 15 AND APRIL 1. SHOULD THE CONTRACTOR FAIL TO MEET THESE REQUIREMENTS, A DISINCENTIVE SHALL BE ASSESSED IN THE AMOUNT OF \$5,000 PER CALENDAR DAY.

E:\0DOT\20-0002-010 STA 172-10.86 (Jan Proqramatics)\11010 STA-172-10.86\Design\MOT\Sheets\11010_MNO01.dgn Sheet 12/6/2021 11:33:19 AM rsabol

CALCULATED
SAC
CHECKED
RMS

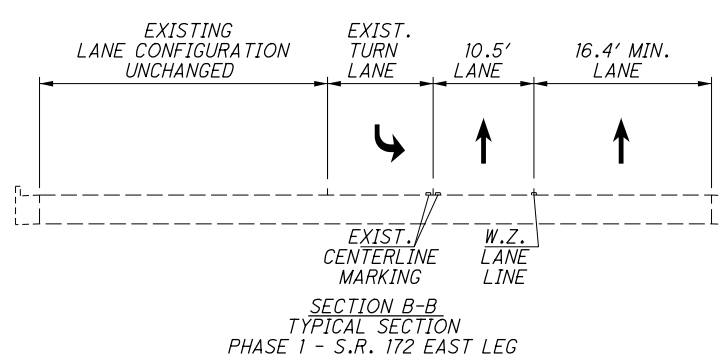
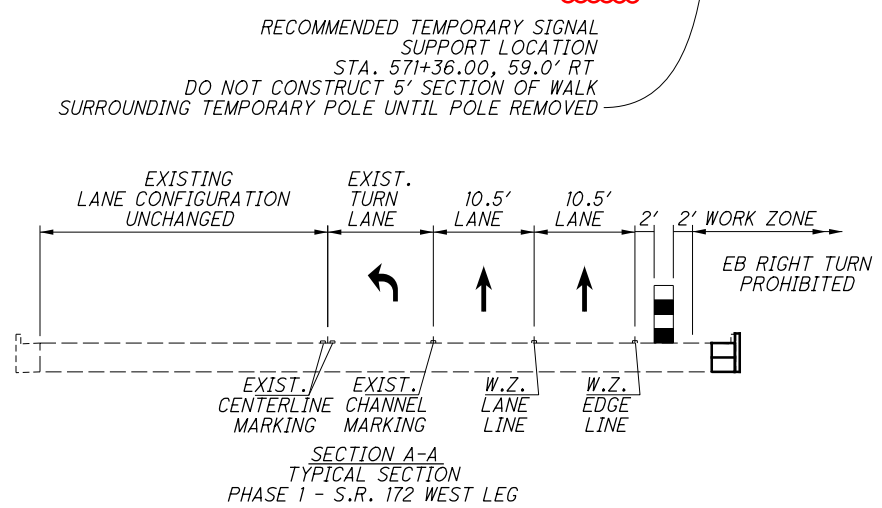
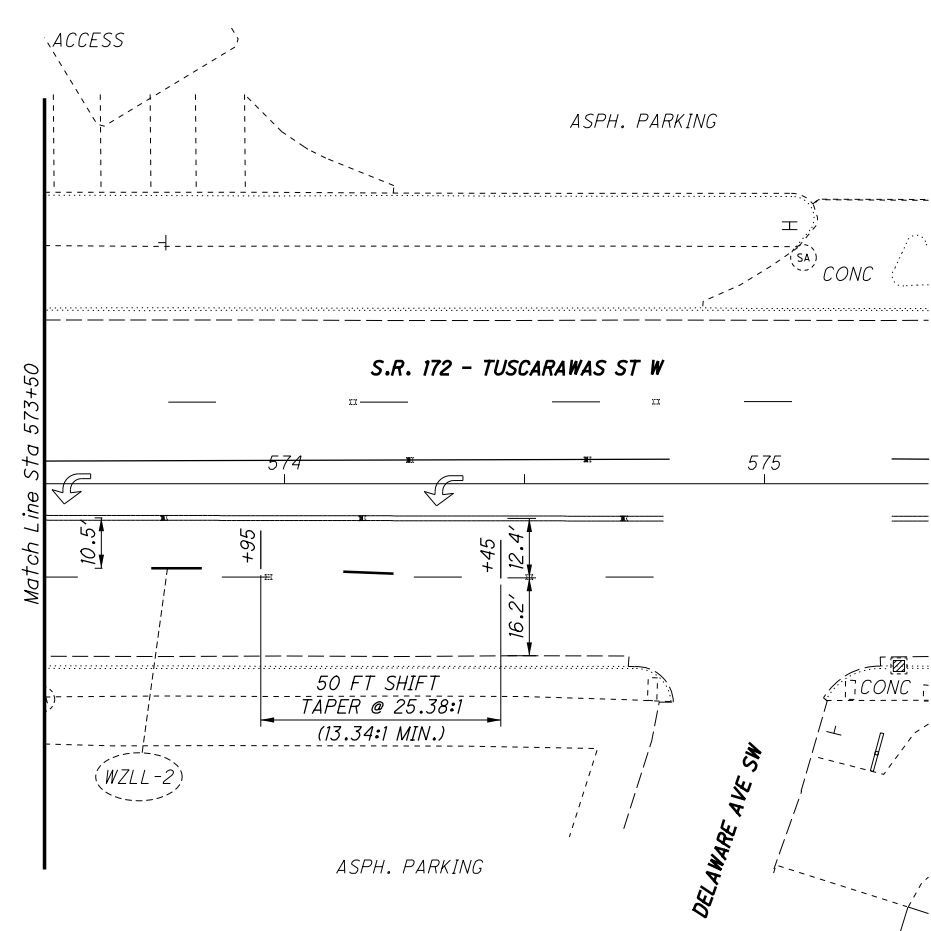
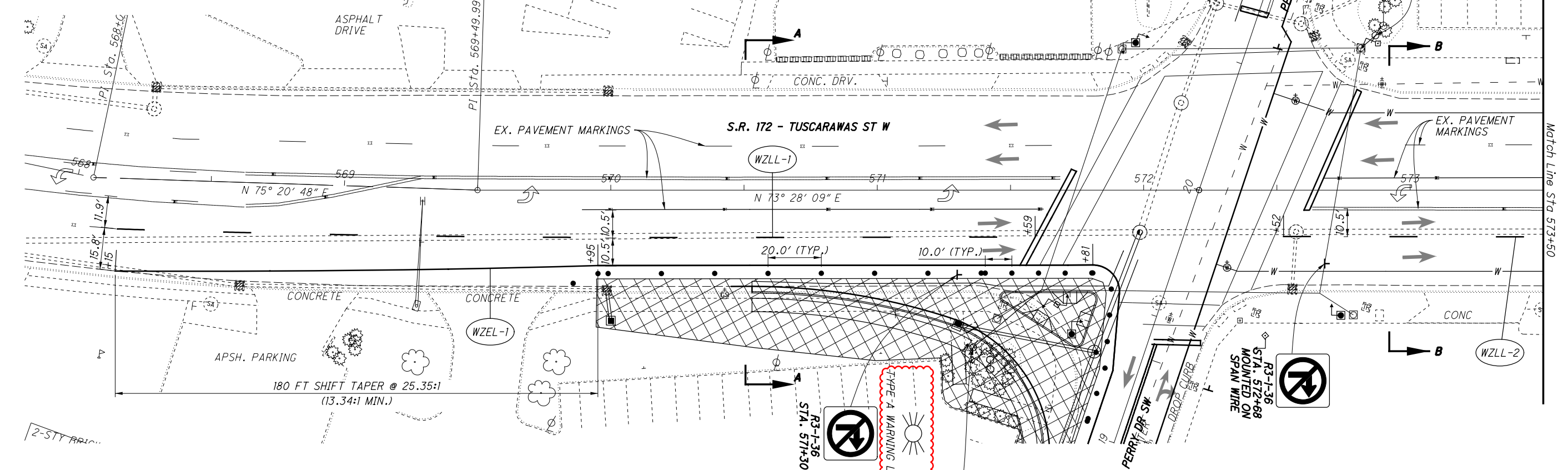
MAINTENANCE OF TRAFFIC GENERAL NOTES

STA-172-10.86

10
109

E:\ODOT\20-0002-010 STA 172-10.86 (Jan Programmatic)\11010_STA-172-10.86\Design\MOT\Sheets\11010_MPO01.dgn SR 172 12/6/2021 11:34:24 AM rsabol

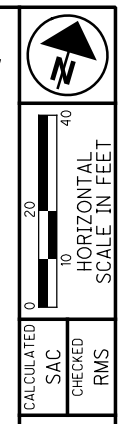
- ➔ DIRECTION OF TRAVEL, LANE USE (SHOWN FOR CLARITY)
- DRUMS
- ▨ AREA TO BE CONSTRUCTED, CURRENT PHASE



RECOMMENDED TEMPORARY SIGNAL SUPPORT LOCATION
 STA. 571+36.00, 59.0' RT
 DO NOT CONSTRUCT 5' SECTION OF WALK SURROUNDING TEMPORARY POLE UNTIL POLE REMOVED

MOT PAVEMENT MARKING LEGEND (ALL SHEETS)

- | | | | |
|------|--|------|---|
| WZCH | WORK ZONE CHANNELIZING LINE, CLASS 1, 8", 642 PAINT | WZEL | WORK ZONE EDGE LINE, CLASS 1, 6", 642 PAINT |
| WZCL | WORK ZONE CENTER LINE, CLASS 1, 642 PAINT | WZLL | WORK ZONE LANE LINE, CLASS 1, 6", 642 PAINT |
| WZCR | WORK ZONE CENTER LINE, CLASS 1, 642 PAINT, PASSING PROHIBITED, RIGHT | WZSL | WORK ZONE STOP LINE, CLASS 1, 642 PAINT |
| WZCS | WORK ZONE CENTER LINE, CLASS 1, 642 PAINT, DOUBLE SOLID | WZDL | WORK ZONE DOTTED LINE, CLASS 1, 4", 642 PAINT |
| | | WZAR | WORK ZONE ARROW, CLASS 1, 642 PAINT |



CALCULATED SAC CHECKED RMS
MAINTENANCE OF TRAFFIC - PHASE 1
S.R. 172

STA-172-10.86
 15
 109

➔ DIRECTION OF TRAVEL, LANE USE (SHOWN FOR CLARITY)

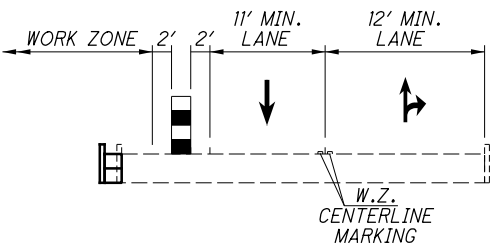
• • • DRUMS

▨ AREA TO BE CONSTRUCTED, CURRENT PHASE

FOR MOT PAVEMENT MARKING LEGEND, SEE SHEET 15

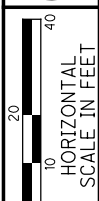
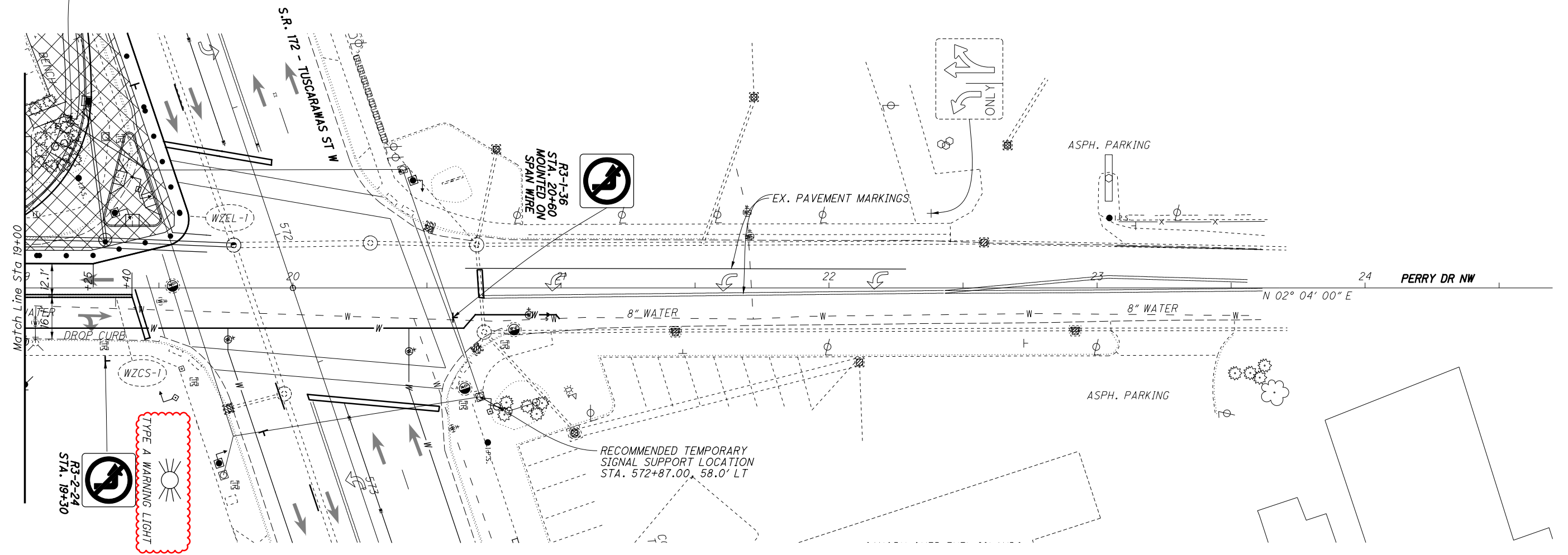
NOTES:

1. CONTRACTOR SHALL NOT CONSTRUCT BOTH DRIVES FOR WALGREENS ON THE WEST SIDE OF PERRY DR SW AT THE SAME TIME. ACCESS TO WALGREENS MUST BE MAINTAINED THROUGH AT LEAST ONE OF THE TWO DRIVES AT ALL TIMES.



SECTION A-A
TYPICAL SECTION
PHASE 1 - PERRY DR SW

RECOMMENDED TEMPORARY SIGNAL SUPPORT LOCATION
STA. 571+36.00, 59.0' RT
DO NOT CONSTRUCT 5' SECTION OF WALK SURROUNDING TEMPORARY POLE UNTIL POLE REMOVED



CALCULATED
SAC
CHECKED
RMS

MAINTENANCE OF TRAFFIC - PHASE 1
PERRY DRIVE

STA-172-10.86

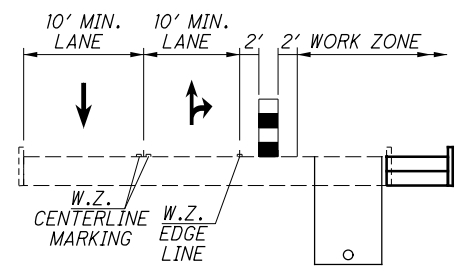
E:\ODOT\20-0002-010 STA 172-10.86 (Jan Programmatic)\11010_STA-172-10.86\Design\MOT_Sheets\11010_MPO01.dgn Perry Drive 12/6/2021 11:34:54 AM r_sabol

→ DIRECTION OF TRAVEL, LANE USE (SHOWN FOR CLARITY)

• • • DRUMS

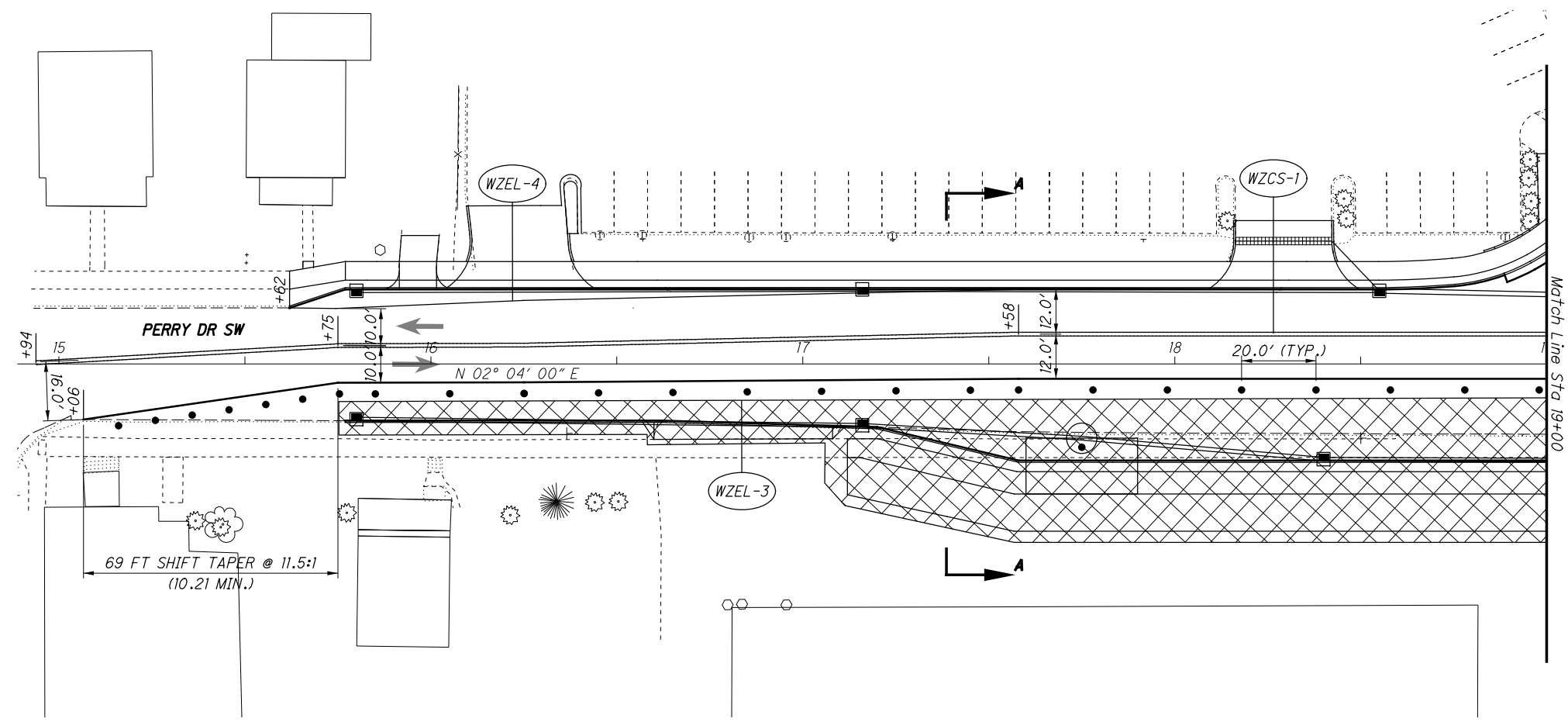
▨ AREA TO BE CONSTRUCTED, CURRENT PHASE

FOR MOT PAVEMENT MARKING LEGEND, SEE SHEET 15



SECTION A-A
TYPICAL SECTION
PHASE 2 - PERRY DR SW

NB LEFT TURN PROHIBITED



69 FT SHIFT TAPER @ 11.5:1
(10.21 MIN.)

Match Line Sta 19+00

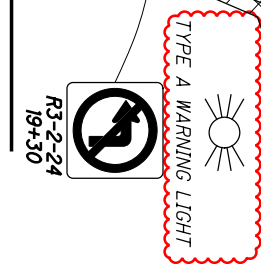
RECOMMENDED TEMPORARY SIGNAL SUPPORT LOCATION
STA. 571+36.00, 59.0' RT

S.R. 172 - TUSCARAWAS ST W

R3-1-36
STA. 20+55
MOUNTED ON
SPAN WIRE

EX. PAVEMENT MARKINGS

Match Line Sta 19+00



TYPE A WARNING LIGHT

RECOMMENDED TEMPORARY SIGNAL SUPPORT LOCATION
STA. 572+87.00, 58.0' LT

N 02° 04' 00" E

PERRY DR NW



CALCULATED
SAC
CHECKED
RMS

MAINTENANCE OF TRAFFIC - PHASE 2
PERRY DRIVE

STA-172-10.86

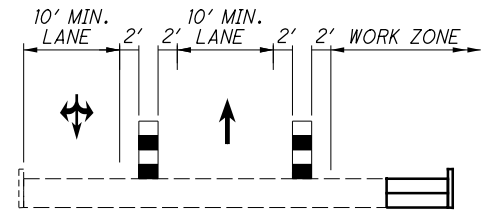
E:\0001\20-0002-010 STA 172-10.86 (Jan Programatics)\11010_STA-172-10.86\Design\MOT_Sheets\11010_MPO02.dgn Perry Drive 12/6/2021 11:37:14 AM r_sabol

→ DIRECTION OF TRAVEL, LANE USE (SHOWN FOR CLARITY)

• • • DRUMS

▨ AREA TO BE CONSTRUCTED, CURRENT PHASE

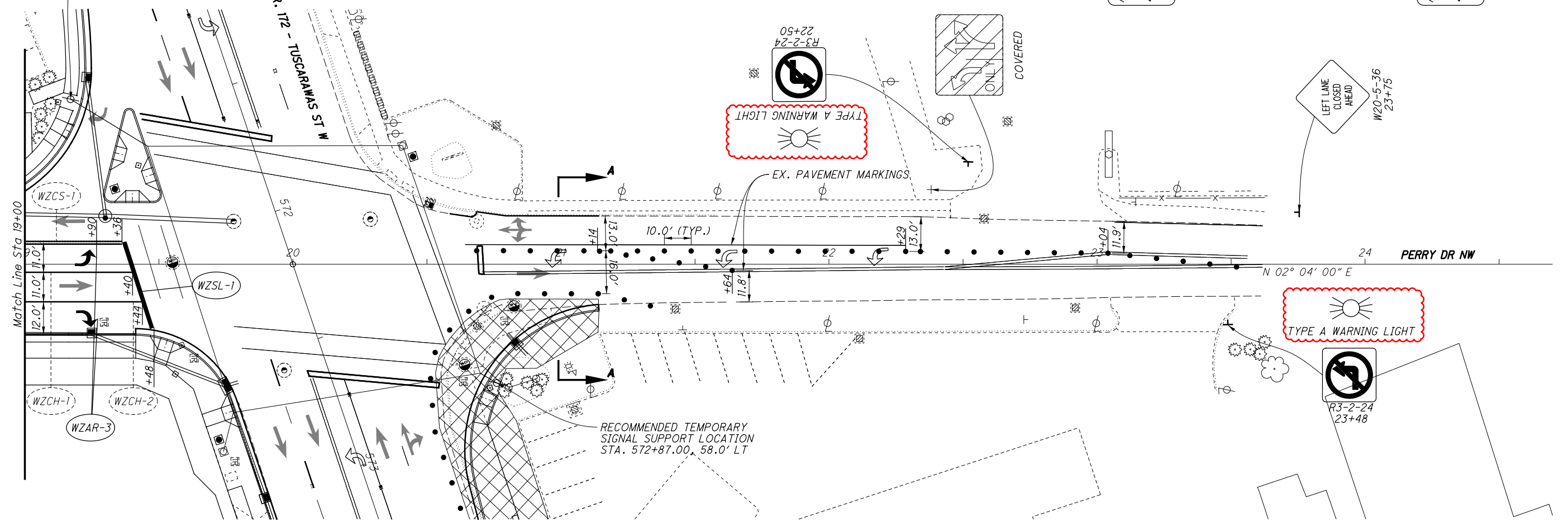
FOR MOT PAVEMENT MARKING LEGEND, SEE SHEET 15



SECTION A-A
TYPICAL SECTION
PHASE 4A - PERRY DR NW

RECOMMENDED TEMPORARY SIGNAL SUPPORT LOCATION
STA. 571+36.00, 59.0' RT

S.R. 172 - TUSCARAWAS ST W



TYPE A WARNING LIGHT

EX. PAVEMENT MARKINGS

RECOMMENDED TEMPORARY SIGNAL SUPPORT LOCATION
STA. 572+87.00, 58.0' LT

TYPE A WARNING LIGHT

R3-2-24
23+48

R3-8b-48
17+60

R3-8b-48
18+90

W20-5-36
23+75



0 20 40
HORIZONTAL SCALE IN FEET

CALCULATED
SAC
CHECKED
RMS

MAINTENANCE OF TRAFFIC - PHASE 4A
PERRY DRIVE (WORK HOURS)

STA-172-10.86

22
109

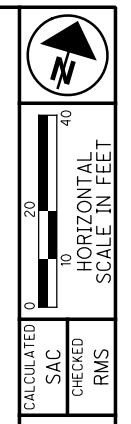
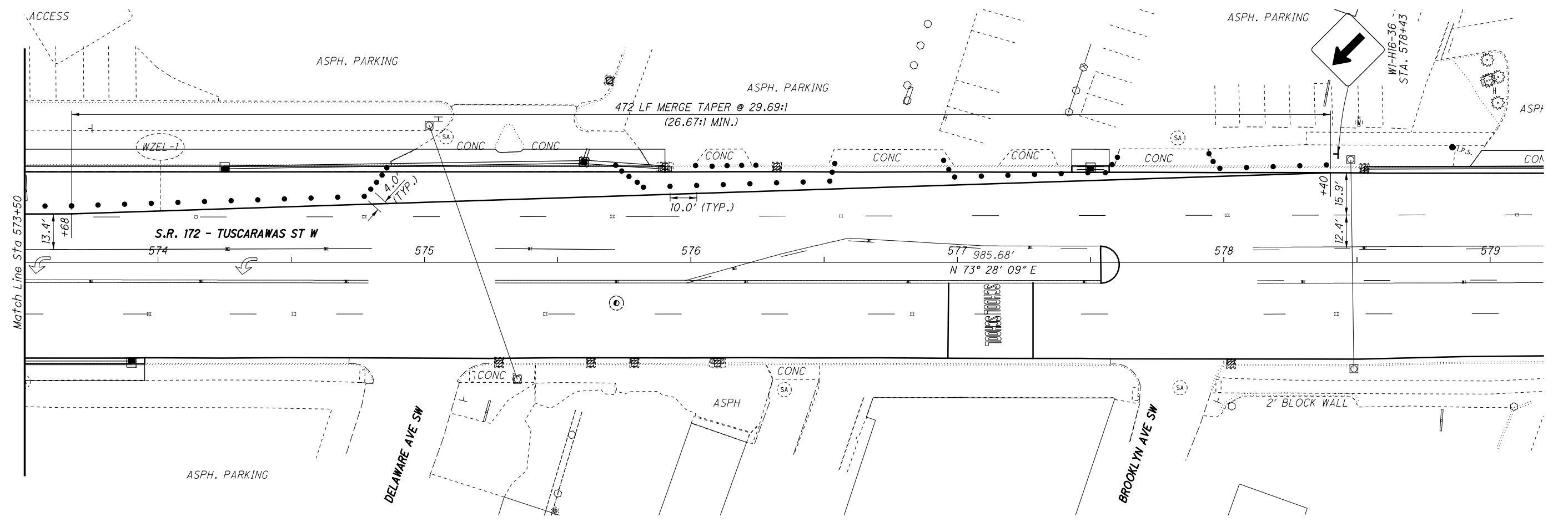
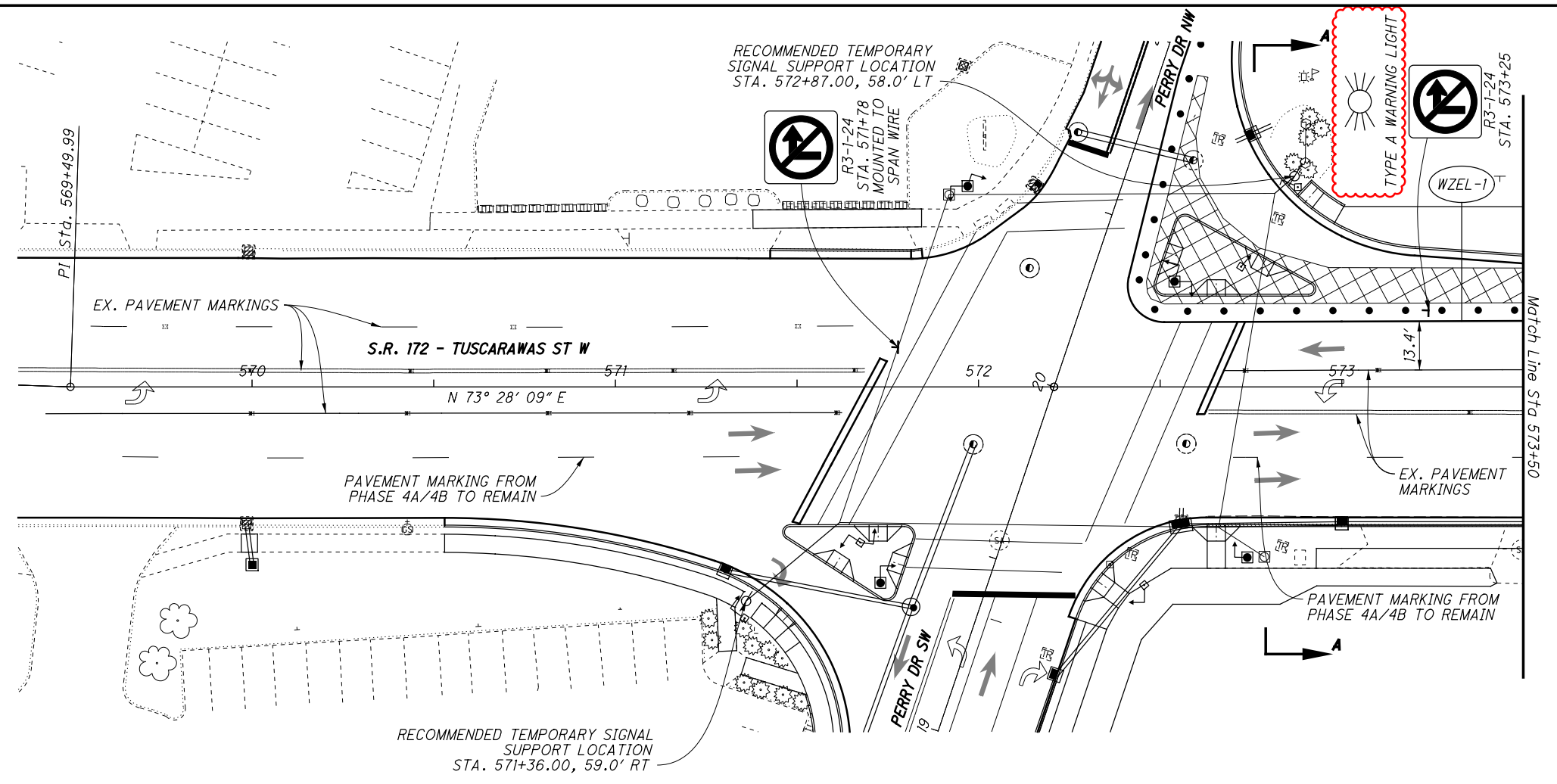
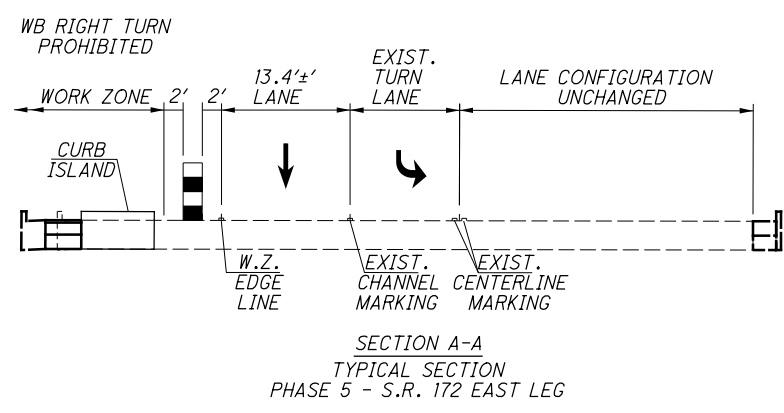
E:\ODOT\20-0002-010 STA 172-10.86 (Jan Programmatic)\11010_STA-172-10.86\Design\MOT\Sheets\11010_MPO04.dgn Perry Drive 12/6/2021 11:39:50 AM rsabol

→ DIRECTION OF TRAVEL, LANE USE (SHOWN FOR CLARITY)

• • • DRUMS

▨ AREA TO BE CONSTRUCTED, CURRENT PHASE

FOR MOT PAVEMENT MARKING LEGEND, SEE SHEET 15



CALCULATED SAC CHECKED RMS

MAINTENANCE OF TRAFFIC - PHASE 5

S.R. 172

STA-172-10.86

26
109

E:\ODOT\20-0002-010 STA 172-10.86 (Jan Programatics)\11010_STA-172-10.86\Design\MOT\Sheets\11010_MPO05.dgn SR 172 12/6/2021 11:40:41 AM r.sabol

E:\0001\20-0002-010 STA 172-10.86 (Jan Programatics)\11010 STA-172-10.86\Design\Roadway\Sheets\11010_GG001.dgn Sheet 12/6/2021 11:42:01 AM rsabol

SHEET NUM.										PART.		ALT	ITEM	ITEM EXT	GRAND TOTAL	UNIT	DESCRIPTION	SEE SHEET NO.
6	7	9	34	35	36	69	74		OFFICE CALCS	01/SAF/PV	02/S>2/OT /CANT	(X)						
ROADWAY																		
LS										LS			201	11000	LS		CLEARING AND GRUBBING	
						883				876	7		202	23000	883	SY	PAVEMENT REMOVED	
		8				2,542			5,033	7,468	115		202	30000	7,583	SF	WALK REMOVED	
						86			707	793			202	32000	793	FT	CURB REMOVED	
						8			872	872	8		202	32500	880	FT	CURB AND GUTTER REMOVED	
				95						95			202	35100	95	FT	PIPE REMOVED, 24" AND UNDER	
				3						3			202	58100	3	EACH	CATCH BASIN REMOVED	
				315						315			SPECIAL	20270110	315	FT	PIPE CLEANOUT, 24" AND UNDER	7
		1								1			202	98100	1	EACH	REMOVAL MISC.: BENCH	6
	3									3			202	98100	3	EACH	REMOVAL MISC.: INSPECTION WELL	7
	50									50			202	98200	50	FT	REMOVAL MISC.: CONDUIT	7
			1,891							615	1,276		203	10000	1,891	CY	EXCAVATION	
			2							2			203	20000	2	CY	EMBANKMENT	
	10									10			203	20001	10	CY	EMBANKMENT, AS PER PLAN	7
						655			2,481	3,114	22		204	10000	3,136	SY	SUBGRADE COMPACTION	
41										12	29		204	13000	41	CY	EXCAVATION OF SUBGRADE	
41										12	29		204	30010	41	CY	GRANULAR MATERIAL, TYPE B	
2										2			204	45000	2	hour	PROOF ROLLING	
122										37	85		204	50000	122	SY	GEOTEXTILE FABRIC	
		23	6			1,952	156		3,996	5,977	156		608	10000	6,133	SF	4" CONCRETE WALK	
						256				141	115		608	13000	256	SF	6" CONCRETE WALK	
						434				434			608	15000	434	SF	8" CONCRETE WALK	
			629							629			608	52000	629	SF	CURB RAMP	
									3,024	3,024			SPECIAL	69098100	3,024	FT	REINFORCEMENT MESH FOR SAW CUT JOINTS	9A
LS										LS			SPECIAL	69098400	LS		SURVEY CONTROL VERIFICATION	6
EROSION CONTROL																		
86										86			653	10000	86	CY	TOPSOIL FURNISHED AND PLACED	
			770							770			659	00500	770	SY	SEEDING AND MULCHING, CLASS 1	
39										39			659	14000	39	SY	REPAIR SEEDING AND MULCHING	
0.11										0.11			659	20000	0.11	TON	COMMERCIAL FERTILIZER	
0.16										0.16			659	31000	0.16	ACRE	LIME	
5										5			659	35000	5	MGAL	WATER	
					LS					LS	LS		832	15000	LS		STORM WATER POLLUTION PREVENTION PLAN	
					LS					LS	LS		832	15002	LS		STORM WATER POLLUTION PREVENTION INSPECTIONS	
					LS					LS	LS		832	15010	LS		STORM WATER POLLUTION PREVENTION INSPECTION SOFTWARE	
					23,708					14,225	9,483		832	30000	23,708	EACH	EROSION CONTROL	
DRAINAGE																		
	100			61						161			605	05210	161	FT	4" UNCLASSIFIED PIPE UNDERDRAINS WITH GEOTEXTILE FABRIC	
				1,163						1,163			605	06020	1,163	FT	4" BASE PIPE UNDERDRAINS WITH GEOTEXTILE FABRIC	
	160									160			611	00406	160	FT	4" CONDUIT, TYPE F	
	50			150						200			611	00410	200	FT	4" CONDUIT, TYPE F FOR UNDERDRAIN OUTLET	
				19						19			611	01800	19	FT	8" CONDUIT, TYPE B	
				1,168						1,168			611	04400	1,168	FT	12" CONDUIT, TYPE B	
				115						115			611	05900	115	FT	15" CONDUIT, TYPE B	
				79						79			611	07400	79	FT	18" CONDUIT, TYPE B	
				26						26			611	97000	26	FT	SLOTTED DRAIN, TYPE 1, 8"	7
	50									50			611	97400	50	FT	CONDUIT, MISC.: TYPE B FOR DRAINAGE DISCHARGE CONTINUANCE	7
	50									50			611	97400	50	FT	CONDUIT, MISC.: TYPE C FOR DRAINAGE DISCHARGE CONTINUANCE	7
										50			611	97400	50	FT	CONDUIT, MISC.: TYPE E FOR DRAINAGE DISCHARGE CONTINUANCE	7
										50			611	97400	50	FT	CONDUIT, MISC.: TYPE F FOR DRAINAGE DISCHARGE CONTINUANCE	7
				1						1			611	98151	1	EACH	CATCH BASIN, NO. 3, AS PER PLAN	7
				14						14			611	98181	14	EACH	CATCH BASIN, NO. 3A, AS PER PLAN	7
				1						1			611	98470	1	EACH	CATCH BASIN, NO. 2-2B	
				1						1			611	98505	1	EACH	CATCH BASIN, NO. 2-2C, AS PER PLAN	7
				1						1			611	98630	1	EACH	CATCH BASIN ADJUSTED TO GRADE	
				1						1			611	99574	1	EACH	MANHOLE, NO. 3	
				1						1			611	99580	1	EACH	MANHOLE, NO. 3 WITH 84" BASE I.D. AND 6" WEIR	
				7						7			611	99655	7	EACH	MANHOLE ADJUSTED TO GRADE, AS PER PLAN	7

CALCULATED RMS CHECKED RSW
GENERAL SUMMARY
STA-172-10.86
30
109

E:\0001\20-0002-010 STA 172-10.86 (Jan Programatics)\11010_STA-172-10.86\Design\Roadway\Sheets\11010_GG002.dgn Sheet 12/16/2021 11:42:51 AM r_sabol

SHEET NUM.										PART.			ALT	ITEM	ITEM EXT	GRAND TOTAL	UNIT	DESCRIPTION	SEE SHEET NO.
7	9	35	69	72	74	81	82	99		OFFICE CALCS	01/SAF/PV	02/S>2/OT /CANT	(X)						
DRAINAGE (CONT.)																			
3											3			611	99720	3	EACH	INSPECTION WELL	7
		1									1			895	10010	1	EACH	MANUFACTURED WATER QUALITY STRUCTURE, TYPE 1	7
PAVEMENT																			
	100										100			251	01000	100	SY	PARTIAL DEPTH PAVEMENT REPAIR (441)	
	100										100			253	01000	100	SY	PAVEMENT REPAIR	
											10,840	10,840		254	01000	10,840	SY	PAVEMENT PLANING, ASPHALT CONCRETE, 1.25"	
	15				17						623	195	460	301	46000	655	CY	ASPHALT CONCRETE BASE, PG64-22	
			56		2							56	2	301	48000	58	CY	ASPHALT CONCRETE BASE, PG64-22 (DRIVEWAYS)	
			2								415	122	295	304	20000	417	CY	AGGREGATE BASE	
	4		23		5						1,157	1,086	103	407	10000	1,189	GAL	TACK COAT	
					1						463	463	1	441	50101	464	CY	ASPHALT CONCRETE SURFACE COURSE, TYPE 1, (448), AS PER PLAN, PG70-22M	9
	4				4						122	39	91	441	50300	130	CY	ASPHALT CONCRETE INTERMEDIATE COURSE, TYPE 2, (448)	
			14		1						1	15	1	441	50401	16	CY	ASPHALT CONCRETE SURFACE COURSE, TYPE 1, (448), (DRIVEWAYS), AS PER PLAN, PG64-22	9
			3									3		452	10050	3	SY	6" NON-REINFORCED CONCRETE PAVEMENT, CLASS QC MS	
			137		8							128	17	452	12050	145	SY	8" NON-REINFORCED CONCRETE PAVEMENT, CLASS QC MS	
											819	819	35	609	23000	854	FT	COMBINATION CURB AND GUTTER, TYPE 4	
			8		27						813	891		609	24510	891	FT	CURB, TYPE 4-C	
			78								83	83		609	50000	83	SY	4" CONCRETE TRAFFIC ISLAND	
WATER WORK																			
				2,487								2,487		638	06200	2,487	FT	POLYETHYLENE ENCASEMENT	
				1								1		638	10480	1	EACH	FIRE HYDRANT REMOVED	
				170								170		SPECIAL	63820046	170	FT	6" WATER MAIN DIP CLASS 52 PUSH ON JOINTS AND FITTINGS, CITY OF CANTON	73-75
				1,798								1,798		SPECIAL	63820086	1,798	FT	8" WATER MAIN DIP CLASS 52 PUSH ON JOINTS AND FITTINGS, CITY OF CANTON	73-75
				519								519		SPECIAL	63820182	519	FT	12" WATER MAIN DIP CLASS 53 PUSH ON JOINTS AND FITTINGS, CITY OF CANTON	73-75
				6								6		SPECIAL	63820538	6	EACH	6" GATE VALVE WITH VALVE BOX, CITY OF CANTON	73-75
				6								6		SPECIAL	63820554	6	EACH	8" GATE VALVE WITH VALVE BOX, CITY OF CANTON	73-75
				4								4		SPECIAL	63820586	4	EACH	12" GATE VALVE WITH VALVE BOX, CITY OF CANTON	73-75
				2								2		SPECIAL	63820750	2	EACH	6" FIRE HYDRANT, CITY OF CANTON	73-75
				146								146		SPECIAL	63820772	146	FT	1" POLYETHYLENE WATER SERVICE LINE, CITY OF CANTON	73-75
				85								85		SPECIAL	63820776	85	FT	1 1/2" POLYETHYLENE WATER SERVICE LINE, CITY OF CANTON	73-75
				2								2		SPECIAL	63820780	2	FT	2" POLYETHYLENE WATER SERVICE LINE, CITY OF CANTON	73-75
				4								4		SPECIAL	63820878	4	EACH	CUT AND PLUG EXISTING 6" WATER LINE, CITY OF CANTON	73-75
				526								526		638	98600	526	FT	WATER WORK, MISC.-FILL AND PLUG EXISTING 8" WATER MAIN	74
SANITARY SEWER																			
												4		611	99655	4	EACH	MANHOLE ADJUSTED TO GRADE, AS PER PLAN (SANITARY)	7
TRAFFIC CONTROL																			
						138						138		621	00100	138	EACH	RPM	
						135						135		621	54000	135	EACH	RAISED PAVEMENT MARKER REMOVED	
							196					196		630	03100	196	FT	GROUND MOUNTED SUPPORT, NO. 3 POST	
							1					1		630	08600	1	EACH	SIGN POST REFLECTOR	
							4					4		630	79100	4	EACH	SIGN HANGER ASSEMBLY, MAST ARM	
							1					1		630	79500	1	EACH	SIGN SUPPORT ASSEMBLY, POLE MOUNTED	
							168.1					214.1		630	80100	214.1	SF	SIGN, FLAT SHEET	
							1					1		630	84510	1	EACH	RIGID OVERHEAD SIGN SUPPORT FOUNDATION	
							4					4		630	84520	4	EACH	SPAN WIRE SIGN SUPPORT FOUNDATION	
							5					5		630	84900	5	EACH	REMOVAL OF GROUND MOUNTED SIGN AND DISPOSAL	
							3					3		630	85100	3	EACH	REMOVAL OF GROUND MOUNTED SIGN AND REERECTION	
							6					6		630	86002	6	EACH	REMOVAL OF GROUND MOUNTED POST SUPPORT AND DISPOSAL	
							11					11		630	87400	11	EACH	REMOVAL OF OVERHEAD MOUNTED SIGN AND DISPOSAL	
							2					2		630	87500	2	EACH	REMOVAL OF POLE MOUNTED SIGN AND DISPOSAL	
							1					1		630	89704	1	EACH	REMOVAL OF OVERHEAD SIGN SUPPORT AND DISPOSAL, TYPE TC-16.21	
							4					4		630	89810	4	EACH	REMOVAL OF OVERHEAD SIGN SUPPORT AND DISPOSAL, TYPE TC-17.10	
							0.27					0.27		646	10010	0.27	MILE	EDGE LINE, 6"	
							0.46					0.46		646	10110	0.46	MILE	LANE LINE, 6"	
							0.58					0.58		646	10200	0.58	MILE	CENTER LINE	
							1,407					1,407		646	10310	1,407	FT	CHANNELIZING LINE, 12"	
							162					162		646	10400	162	FT	STOP LINE	

CALCULATED RMS CHECKED RSW
GENERAL SUMMARY
STA-172-10.86
31
109

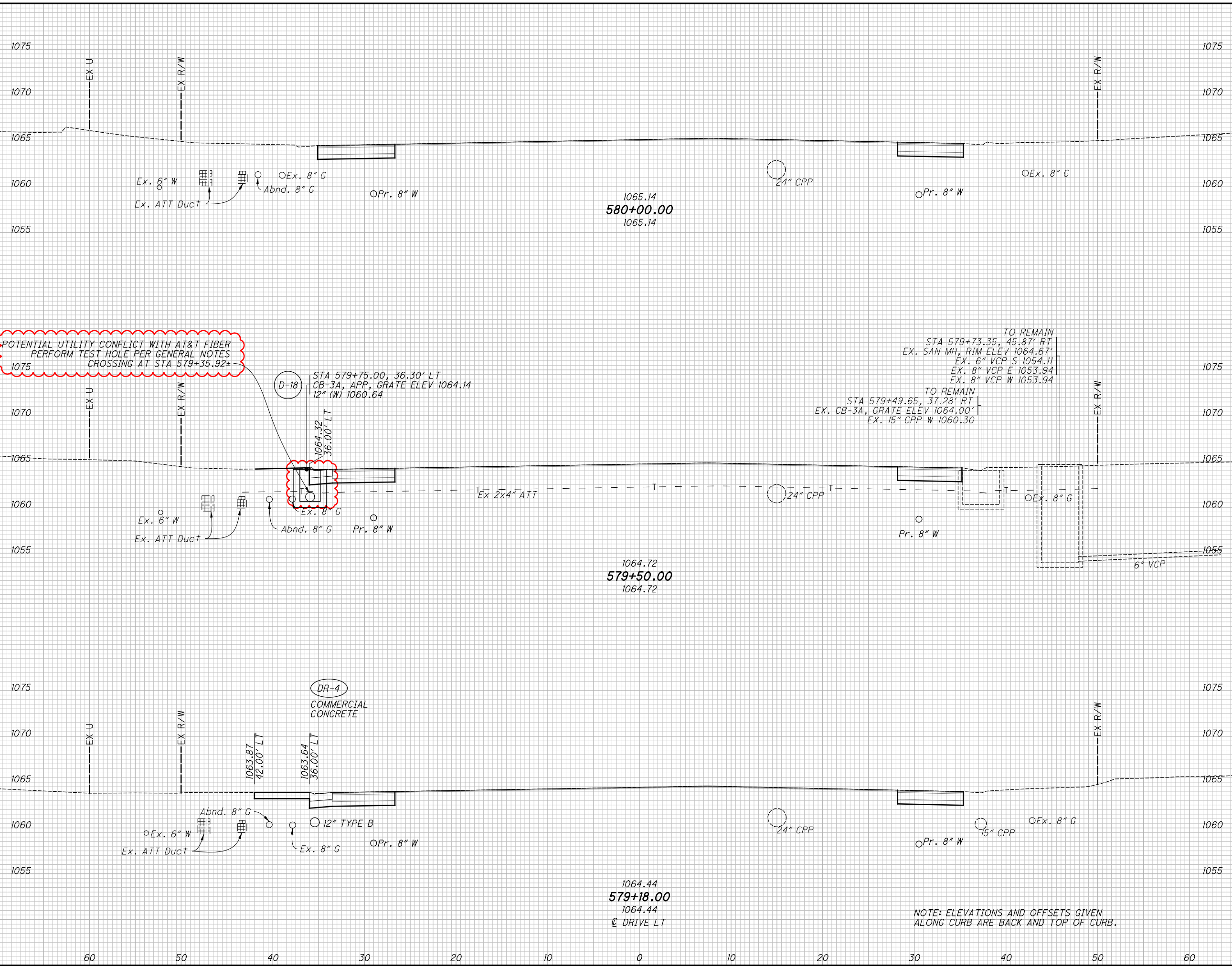
E:\ODOT\20-0002-010 STA 172-10.86 (Jan Programatics)\11010_STA-172-10.86\Design\Roadway\Sheets\11010_GG004.dgn Sheet 12/6/2021 11:44:24 AM r.sabol

SHEET NUM.										PART.		ALT	ITEM	ITEM EXT	GRAND TOTAL	UNIT	DESCRIPTION	SEE SHEET NO.	
10	11	12	13							01/SAF/PV	02/S>2/OT /CANT	(X)							
		6								6			614	18601	6	SNMT	PORTABLE CHANGEABLE MESSAGE SIGN, AS PER PLAN	12	
0.1			0.2							0.3			614	20110	0.3	MILE	WORK ZONE LANE LINE, CLASS I, 6", 642 PAINT		
0.46										0.46			614	20560	0.46	MILE	WORK ZONE LANE LINE, CLASS III, 6", 642 PAINT		
0.1			0.34							0.44			614	21100	0.44	MILE	WORK ZONE CENTER LINE, CLASS I, 642 PAINT		
0.58										0.58			614	21550	0.58	MILE	WORK ZONE CENTER LINE, CLASS III, 642 PAINT		
0.2			0.55							0.75			614	22110	0.75	MILE	WORK ZONE EDGE LINE, CLASS I, 6", 642 PAINT		
0.27										0.27			614	22360	0.27	MILE	WORK ZONE EDGE LINE, CLASS III, 6", 642 PAINT		
150			368							518			614	23200	518	FT	WORK ZONE CHANNELIZING LINE, CLASS I, 8", 642 PAINT		
1,407										1,407			614	23680	1,407	FT	WORK ZONE CHANNELIZING LINE, CLASS III, 8", 642 PAINT		
			75							75			614	24200	75	FT	WORK ZONE DOTTED LINE, CLASS I, 4", 642 PAINT		
50			58							108			614	26200	108	FT	WORK ZONE STOP LINE, CLASS I, 642 PAINT		
162										162			614	26610	162	FT	WORK ZONE STOP LINE, CLASS III, 642 PAINT		
4			6							10			614	30200	10	EACH	WORK ZONE ARROW, CLASS I, 642 PAINT		
	3									3			614	40051	3	EACH	BUSINESS ENTRANCE SIGN, AS PER PLAN	11	
8										8			616	10000	8	MGAL	WATER		
										LS	LS		614	11000	LS		INCIDENTALS		
										8	4		619	16010	12	MNTH	MAINTAINING TRAFFIC		
										LS	LS		623	10000	LS		FIELD OFFICE, TYPE B		
										LS	LS		624	10000	LS		CONSTRUCTION LAYOUT STAKES AND SURVEYING		
																		MOBILIZATION	

CALCULATED	RMS	CHECKED	RSW
GENERAL SUMMARY			
STA - 172 - 10.86			
33			
109			

E:\0001\20-0002-010 STA 172-10.86 (Jan Programatics)\11010_STA-172-10.86\Design\Roadway\Sheets\11010_X5001.dgn XS_SHEET_temporary_model_name_112/6/2021 11:46:00 AM rsabol

SEEDING	
END WIDTH	SO. YDS.
28	0
60	17
50	6
40	11
30	0
20	0
10	0
0	0
10	0
20	0
30	0
40	0
50	0
60	0



END AREA		VOLUME	
CUT	FILL	CUT	FILL
23	0	44	0
25	0	32	0
29	0	19	0
		95	0

CALCULATED	CHECKED	RMS
CROSS SECTIONS - S.R. 172		
STA. 579+18.00 TO STA. 580+00.00		
STA -172-10.86		
53		
109		

NOTE: ELEVATIONS AND OFFSETS GIVEN ALONG CURB ARE BACK AND TOP OF CURB.

E:\0001\20-0002-010 STA 172-10.86 (Jan Programatics)\11010_09_C5001.dgn_Sheet 12/6/2021 11:47:04 AM r.sabol

REF. NO.	SHEET NO.	STATION TO STATION	625	625	625	625	625	625	625	625	625	630	630	632	632	632	632	632	632	632	632	632	
			CONDUIT, 2", 725.04 FT	CONDUIT, 2-1/2", 725.04 FT	CONDUIT, 3", 725.04 FT	CONDUIT, 4", 725.04 FT	TRENCH FT	PULLBOX, 725.08, 24" EACH	GROUND ROD EACH	UNDERGROUND WARNING/MARKING TAPE, AS PER PLAN FT	ARC FLASH CALCULATIONS AND LABEL EACH	SIGN, FLAT SHEET SF	SIGN HANGER ASSEMBLY, MAST ARM EACH	VEHICULAR SIGNAL HEAD, (LED) BLACK, 3-SECTION, 12" LENS, 1-WAY, WITH BACKPLATE EACH	VEHICULAR SIGNAL HEAD, (LED) BLACK, 5-SECTION, 12" LENS, 1-WAY, WITH BACKPLATE EACH	PEDESTRIAN SIGNAL HEAD, (LED), (COUNTDOWN), TYPE D2, AS PER PLAN EACH	PEDESTRIAN PUSH BUTTON EACH	SIGNAL CABLE, 3 CONDUCTOR, NO. 14 AWG FT	SIGNAL CABLE, 5 CONDUCTOR, NO. 14 AWG FT	SIGNAL CABLE, 7 CONDUCTOR, NO. 14 AWG FT	POWER SERVICE, AS PER PLAN EACH	COVERING OF VEHICULAR SIGNAL HEAD EACH	COVERING OF PEDESTRIAN SIGNAL HEAD EACH
SP-1	94	571+97		5			5	1	1	5		10	1					25	40	85			
SP-2	94	571+69.84			8		8	1	1	8		13	1					15	70	60			
SP-3	94	572+53.96			6		6	1	1	6		13	1					35	90	55			
SP-4	94	572+70.04		13		2	15	1	1	15		10	1					20	40	75			
PD-1	94	572+45.60	12				12			12								20	25				
PD-2	94	572+87.91				32	32			32								40	45				
PD-3	94	571+35.61				36	36			36								45	50				
PD-4	94	571+67.44			3		3			3								20	30				
PD-5	94	572+72.30			10		10			10								15	20				
1	94	571+97.1																				1	
3	94	572+31.2																				1	
5	94	572+74																				1	
7	94	572+00																				1	
2A	94	572+74												1								1	
2B	94	571+69.8												1								1	
4	94	571+90												1								1	
6A	94	571+97												1								1	
6B	94	572+53.96												1								1	
8	94	572+45.9												1								1	
A1	94	571+97														1	1						1
A2	94	572+53.96														1	1						1
A3	94	571+69.84														1	1						1
A4	94	572+45.60														1	1						1
B1	94	571+97														1	1						1
B2	94	571+69.84														1	1						1
B3	94	572+53.96														1	1						1
B4	94	572+70.04														1	1						1
C1	94	571+35.61														1	1						1
C2	94	572+53.96														1	1						1
C3	94	572+87.91														1	1						1
C4	94	572+53.96														1	1						1
	94	PB 1					59	59		59								120	120	60			
	94	PB 3					85	85		85								510	600	170			
	94	PB 2					84	84		84								340	420	85			
CONT	94	572+65.14				20	5		1	5	1							60	65	20	1		
TOTALS CARRIED TO GENERAL SUMMARY			12	18	27	318	360	4	10	360	1	46	4	6	4	12	12	1265	1615	610	1	10	12

CALCULATED SEG CHECKED SKN	TRAFFIC SIGNAL SUBSUMMARY S.R.172 AND PERRY DR
STA -172-10.86	
99 109	