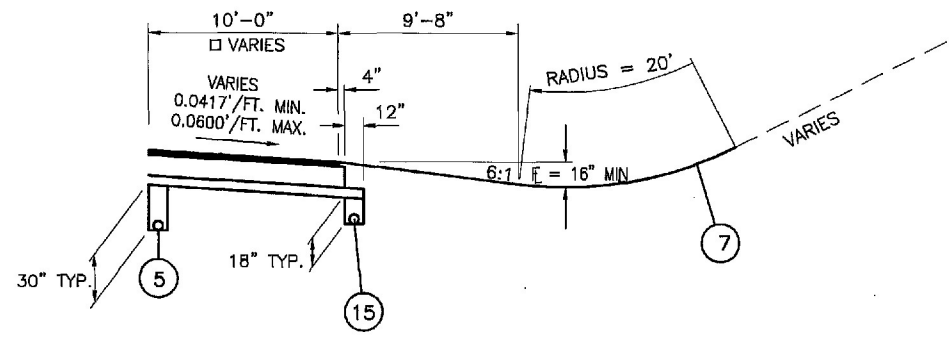


CURB SECTION
STA. 53+85.00 TO STA. 55+00.00

SUPERELEVATION SECTION - NORTHBOUND

△	STA. 53+85.00 TO STA. 55+00.00 = 115.00 LIN. FT. (CURVE LEFT)
△	STA. 82+90.00 TO STA. 85+75.00 = 285.00 LIN. FT. (CURVE LEFT)
△	STA. 85+75.00 TO STA. 92+85.00 = 710.00 LIN. FT. (CURVE LEFT)
△	STA. 92+85.00 TO STA. 95+70.00 = 285.00 LIN. FT. (CURVE LEFT)
TOTAL = 1395.00 LIN. FT.	



DITCH SECTION
STA. 82+90.00 TO STA. 85+00.00

LEGEND

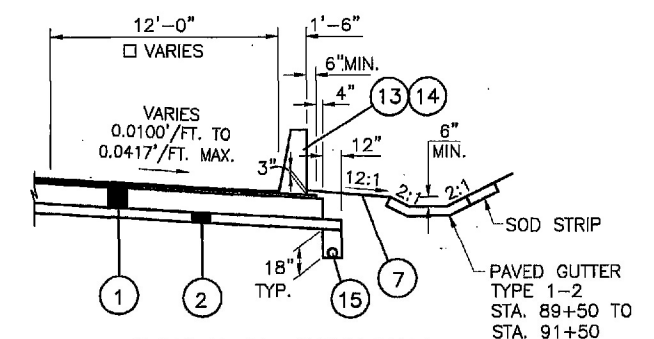
- | | |
|--|---|
| <ul style="list-style-type: none"> ① ITEM 880 - 14 1/4" ASPHALT CONCRETE WITH WARRANTY (7 YEAR), AS PER PLAN ② ITEM 304 - 6" AGGREGATE BASE ③ ITEM 204 - SUBGRADE COMPACTION ④ ITEM 622 - CONCRETE BARRIER, SINGLE SLOPE, TYPE B1 ⑤ ITEM 605 - 6" SHALLOW PIPE UNDERDRAINS W/FABRIC WRAP ⑥ ITEM 606 - GUARDRAIL, TYPE 5 ⑦ ITEM 659 - SEEDING AND MULCHING | <ul style="list-style-type: none"> ⑧ ITEM 622 - CONCRETE BARRIER, SINGLE SLOPE, TYPE C1 ⑨ ITEM 304 - AGGREGATE BASE (THICKNESS VARIES) ⑩ ITEM 609 - CURB, TYPE 6 ⑪ ITEM 408 - PRIME COAT ⑫ ITEM 448 - 2" ASPHALT CONCRETE INTERMEDIATE COURSE, TYPE 1, UNDER GUARDRAIL, PG64-22, AS PER PLAN ⑬ ITEM 622 - CONCRETE BARRIER, SINGLE SLOPE, TYPE D ⑭ ITEM 512 - SEALING OF CONCRETE SURFACES (EPOXY-URETHANE) ⑮ ITEM 605 - 6" BASE PIPE UNDERDRAINS W/FABRIC WRAP |
|--|---|

△△ VARIES RIGHT: 0.0' TO 12.0' STA. 92+15.82 TO STA. 93+15.82
12.0' STA. 93+15.82 TO STA. 95+70.00

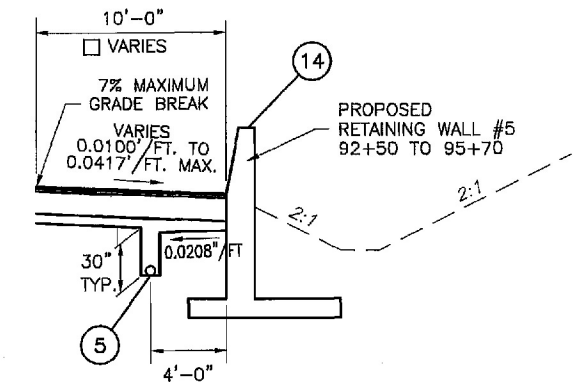
□ VARIES RIGHT: 10.0' STA. 82+90.00 TO STA. 84+50.00
10.0' TO 12.0' STA. 84+50.00 TO STA. 85+00.00
12.0' STA. 85+00.00 TO STA. 92+15.82
12.0' TO 10.0' STA. 92+15.82 TO STA. 93+15.82
10.0' STA. 93+15.82 TO STA. 95+70.00

* 0.0417'/FT. OR RATE OF SUPER IF GREATER

** FOR PAVEMENT CROSS SLOPES SEE SUPER ELEVATION TABLES SHEETS 593-604



BARRIER SECTION
STA. 85+00.00 TO STA. 92+50.00



RETAINING WALL SECTION
STA. 92+50.00 TO STA. 95+70.00

H:\2001\01901\DWG\B901204b.DWG
 H:\2001\01901\dwg\B901204b.dwg, Model, 6/27/2005 2:05:46 PM