

\* VARIES AT ENTRANCE AND EXIT RAMP AREAS  
SEE PAVEMENT DETAILS SHEETS 605-609

△ VARIES LEFT:

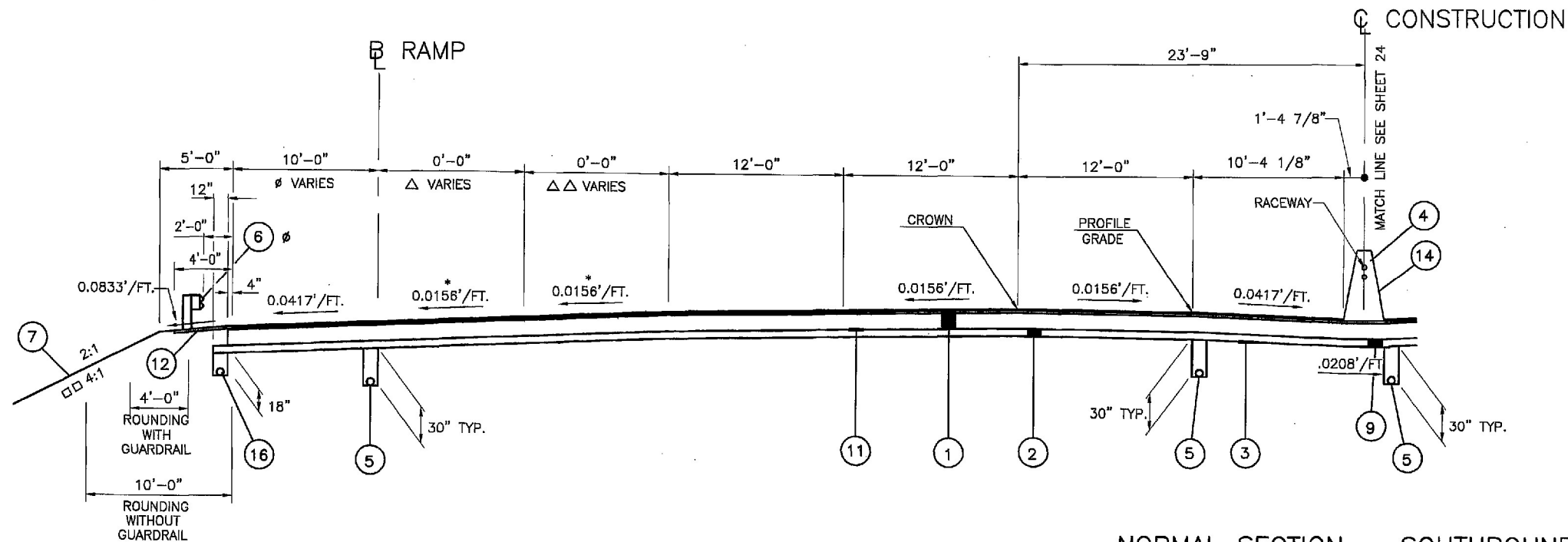
16.0' STA. 55+00.00 TO STA. 57+42.61  
VARIES 19.30' TO 25 STA. 95+70 TO 97+98.18  
16.0' STA. 97+98.18 TO STA. 99+98.67

△△ VARIES LEFT:

7.30' TO 23.0' STA. 55+00.00 TO STA. 57+42.61  
9.0' TO 23.0' STA. 97+98.18 TO STA. 99+98.67

∅ VARIES LEFT:

10.0' TO 8.0' STA. 55+68.48 TO STA. 56+18.48  
8.0' STA. 56+18.48 TO STA. 57+42.61  
10.0' TO 8.0' STA. 92+50.00 TO STA. 93+00.00  
8.0' STA. 93+00.00 TO STA. 97+98.18  
8' TO 6', STA. 97+98.18 TO STA. 98+48.18  
6', STA. 98+48.18 TO STA. 99+98.67  
10.0' TO 12.0' STA. 101+00.00 TO STA. 101+50.00



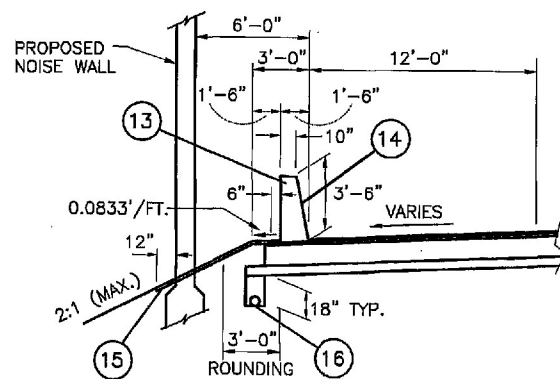
∅ GUARDRAIL SECTION

STA. 100+50.00 TO STA. 101+50.00

NORMAL SECTION - SOUTHBOUND

STA. 55+00.00 TO STA. 61+71.04 = 671.04 LIN. FT.  
STA. 80+70.34 TO STA. 82+90.00 = 219.66 LIN. FT.  
STA. 95+70.00 TO STA. 101+15.00 = 545.00 LIN. FT.  
□ STA. 115+65.00 TO STA. 116+89.00 = 124.00 LIN. FT.

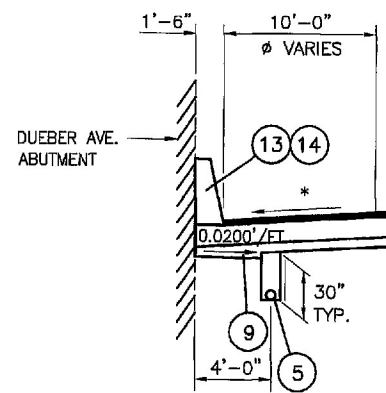
1559.70 LIN. FT.



NOISE WALL & BARRIER SECTION

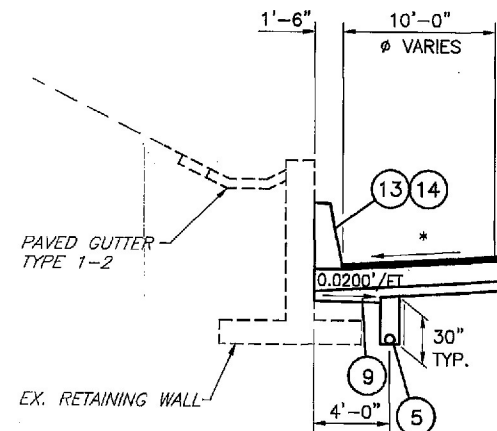
STA. 95+70.00 TO STA. 99+98.67 = 428.67 LIN. FT.  
STA. 115+65.00 TO STA. 116+50.00 = 85.00 LIN. FT.

513.67 LIN. FT.



BARRIER SECTION

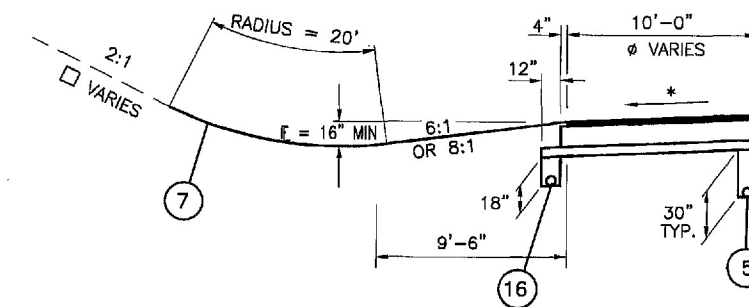
STA. 56+51.74 TO STA. 57+13.32



RETAINING WALL SECTION

STA. 55+00.00 TO STA. 56+51.74  
STA. 57+13.32 TO STA. 57+42.61

\* 0.0417'/FT. OR RATE OF SUPER IF GREATER



DITCH SECTION

□ STA. 57+42.61 TO STA. 61+71.04  
□ STA. 80+70.34 TO STA. 82+90.00

LEGEND

- |   |   |
|---|---|
| ① ITEM 880 - 14 1/4" ASPHALT CONCRETE WITH WARRANTY (7 YEAR), AS PER PLAN | ⑨ ITEM 304 - AGGREGATE BASE (THICKNESS VARIES)  |
| ② ITEM 304 - 6" AGGREGATE BASE  | ⑩ ITEM 609 - CURB, TYPE 6   |
| ③ ITEM 204 - SUBGRADE COMPACTION  | ⑪ ITEM 408 - PRIME COAT   |
| ④ ITEM 622 - CONCRETE BARRIER, SINGLE SLOPE, TYPE B1                      | ⑫ ITEM 448 - 2" ASPHALT CONCRETE INTERMEDIATE COURSE, TYPE 1, UNDER GUARDRAIL, PG64-22, AS PER PLAN |
| ⑤ ITEM 605 - 6" SHALLOW PIPE UNDERDRAINS W/FABRIC WRAP                    | ⑬ ITEM 622 - CONCRETE BARRIER, SINGLE SLOPE, TYPE D   |
| ⑥ ITEM 606 - GUARDRAIL, TYPE 5  | ⑭ ITEM 512 - SEALING OF CONCRETE SURFACES (EPOXY URETHANE)  |
| ⑦ ITEM 659 - SEEDING AND MULCHING   | ⑮ ITEM 448 - 2" ASPHALT CONCRETE INTERMEDIATE COURSE, TYPE 1, UNDER NOISEWALL, PG64-22, AS PER PLAN |
| ⑧ ITEM 622 - CONCRETE BARRIER, SINGLE SLOPE, TYPE C1                      | ⑯ ITEM 605 - 6" BASE PIPE UNDERDRAINS W/FABRIC WRAP   |