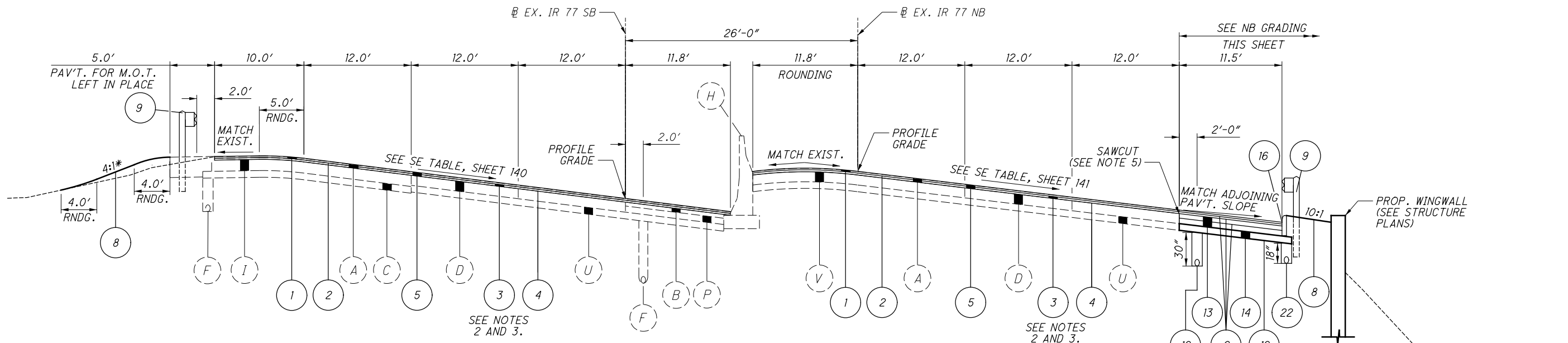
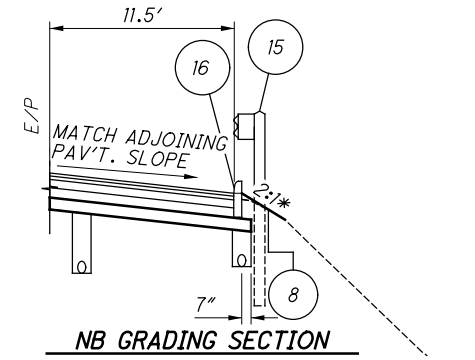


J:\0001\05861_SUM-77-22.30\Design\Roadway\Sheets\05861_GY001.dgn Sheet 11/10/2022 10:48:47 AM david-m



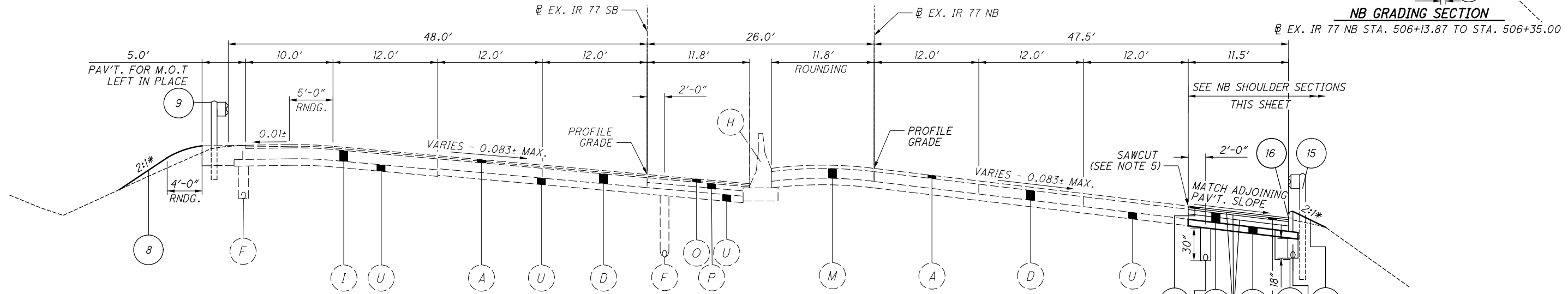
SUPERELEVATED TYPICAL SECTION - I.R. 77

EX. IR 77 SB STA. 507+25.00 TO STA. 508+00.00
EX. IR 77 NB STA. 505+46.15 TO STA. 506+35.00



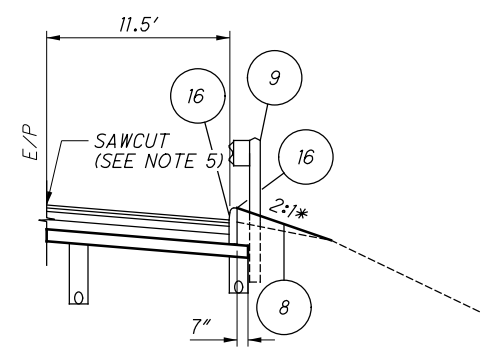
NB GRADING SECTION

EX. IR 77 NB STA. 506+13.87 TO STA. 506+35.00



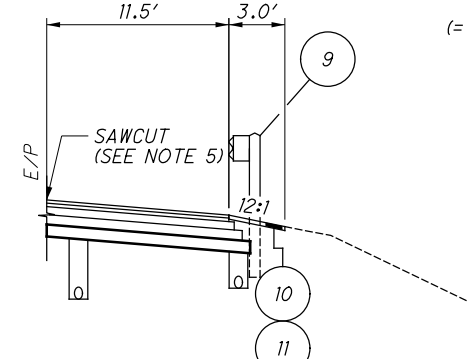
SUPERELEVATED TYPICAL SECTION - I.R. 77

EX. IR 77 SB STA. 508+00 TO STA. 511+13.50
EX. IR 77 NB STA. 506+35.00 TO STA. 507+24.36 BK.
(= EX. IR 77 SB STA. 508+97.59 AHD.) TO EX. IR 77 SB STA. 511+13.50



NB SHOULDER SECTION

EX. IR 77 SB STA. 510+47.11 TO STA. 511+06.22



NB SHOULDER SECTION

EX. IR 77 SB STA. 511+06.22 TO STA. 511+13.50

NOTES:

- SEE SHEET 4 FOR EXISTING LEGEND.
- TAPER INTERMEDIATE COURSE THICKNESS FROM 1 1/2" TO 1 3/4" IN 25' FROM THE BEGIN/END RESURFACING LIMITS.
- SEE GENERAL NOTE "ADDITIONAL RESURFACING REQUIREMENTS" ON SHEET 21.
- SEE SHEET 11 FOR PROPOSED LEGEND.
- SAWCUT EX. ASPHALT OVERLAY DIRECTLY ABOVE EDGE OF UNDERLYING CONCRETE PAVEMENT. THE COSTS OF THE SAWCUT AND ASPHALT PAVEMENT REMOVAL ARE INCLUDED IN ITEM 203 - EXCAVATION.
- SHOULDER STATION LIMITS STATED FOR WIDTH TRANSITIONS AND PARTIAL SECTIONS REPRESENT THE LOCATION OF THE OUTSIDE OF THE SHOULDER AS MEASURED RADIAL TO THE BASELINE.

* SEE CROSS SECTIONS FOR ACTUAL SLOPES.