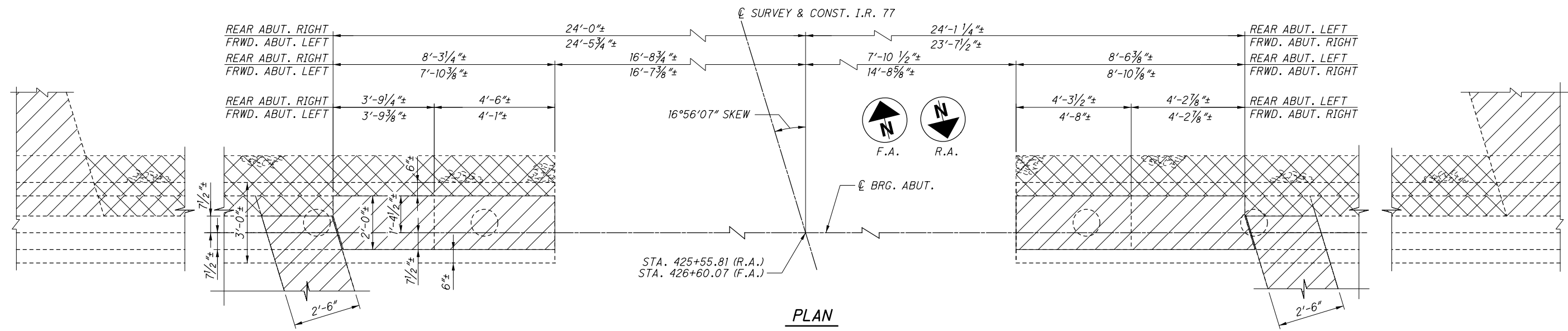
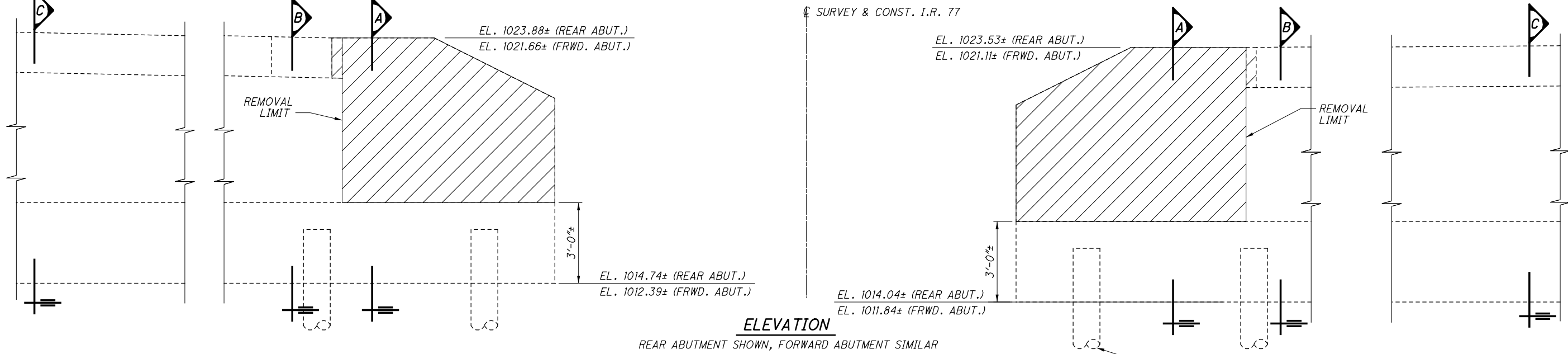


O:\2017\2017258\ProjectData\SUM\06002\Design\Structures\SUM077_0802\Sheets\077_0802C_SV001.dgn Sheet 4/9/2021 2:04:59 PM r cummins



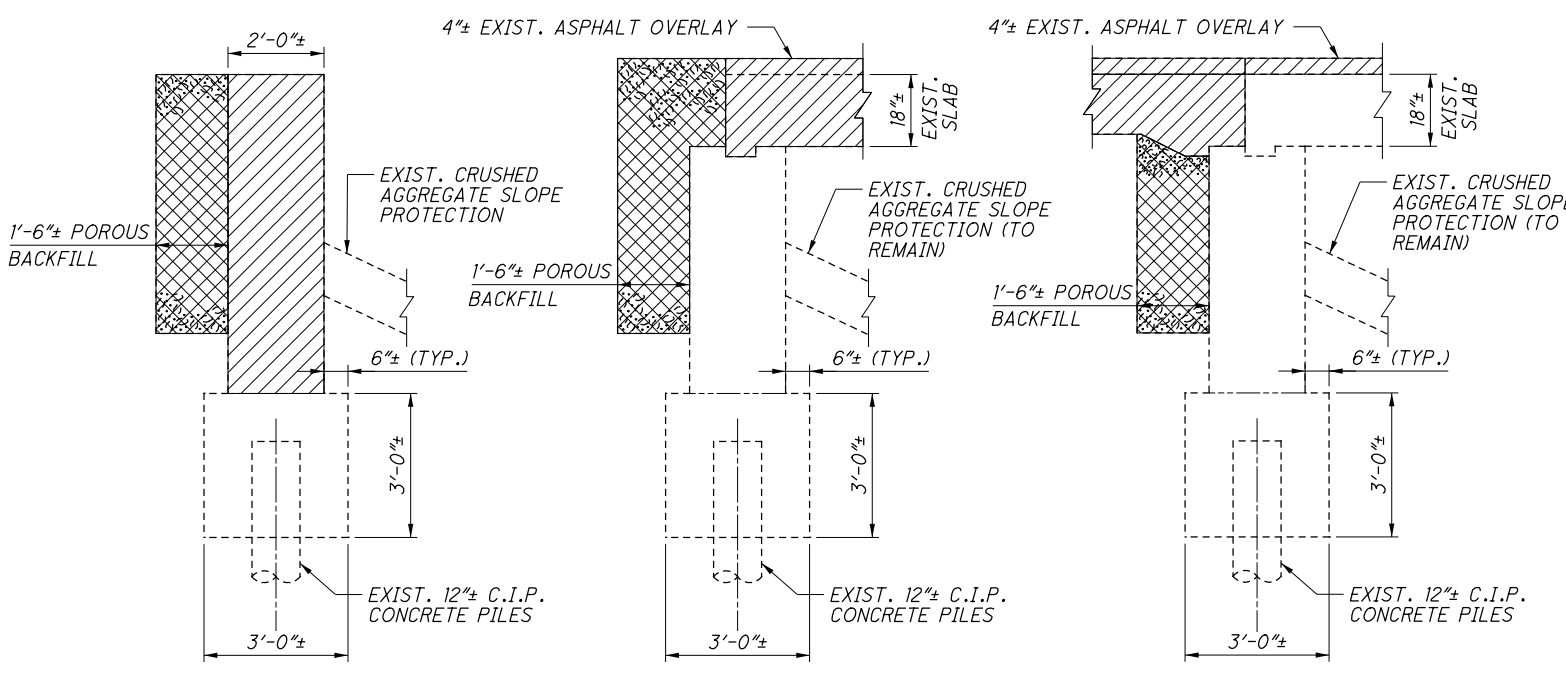
PLAN

REAR ABUTMENT SHOWN, FORWARD ABUTMENT SIMILAR



ELEVATION

REAR ABUTMENT SHOWN, FORWARD ABUTMENT SIMILAR



SECTION A SECTION B SECTION C

REVISIONS		
NO.	DATE	DESCRIPTION
3	04/9/21	NOTE 3 REMOVED

LEGEND:

- INDICATES PORTIONS OF STRUCTURE REMOVED, OVER 20 FOOT SPAN, AS PER PLAN, PER ITEM 202
- INDICATES WEARING COURSE REMOVED, PER ITEM 848
- INDICATES POROUS BACKFILL REMOVED, PER ITEM 518
- EXIST. 12" DIA. C.I.P. CONCRETE PILE

NOTES:

1. FOR EXISTING SLAB REMOVAL DETAIL USING HYDRODEMOLITION, SEE SHEET 15/26.
2. ALL UNSOUND AREAS OF CONCRETE TO REMAIN SHALL BE PATCHED UNDER ITEM 519 - PATCHING CONCRETE STRUCTURE. ESTIMATED AREAS ARE SHOWN IN THE TABLES IN THE GENERAL NOTES HAVE BEEN INCLUDED IN THE ESTIMATED QUANTITIES.

DESIGN AGENCY
GPD GROUP*
Glenn, Pels, Schaner, Burns & Dehaven, Inc.
 520 South Main Street, Akron, OH 44311 330.572.2100
Copyright © Glenn, Pels, Schaner, Burns & Dehaven, Inc. 2020

DESIGNED
 REV RHC
CHECKED
 RHC

DRAWN
 REV RHC
REVISOR
 RHC

REVIEWED
 T J W
DATE
 1-18-21
STRUCTURE FILE NUMBER
 7702493/7702523

ABUTMENT REMOVAL DETAILS
 BRIDGE NO. SUM-77-0802 L/R
 OVER EAST WARNER ROAD

SUM-77 / 277 / 224
VARIOUS
PID No. 106002

7 / 26
 1161
 1288