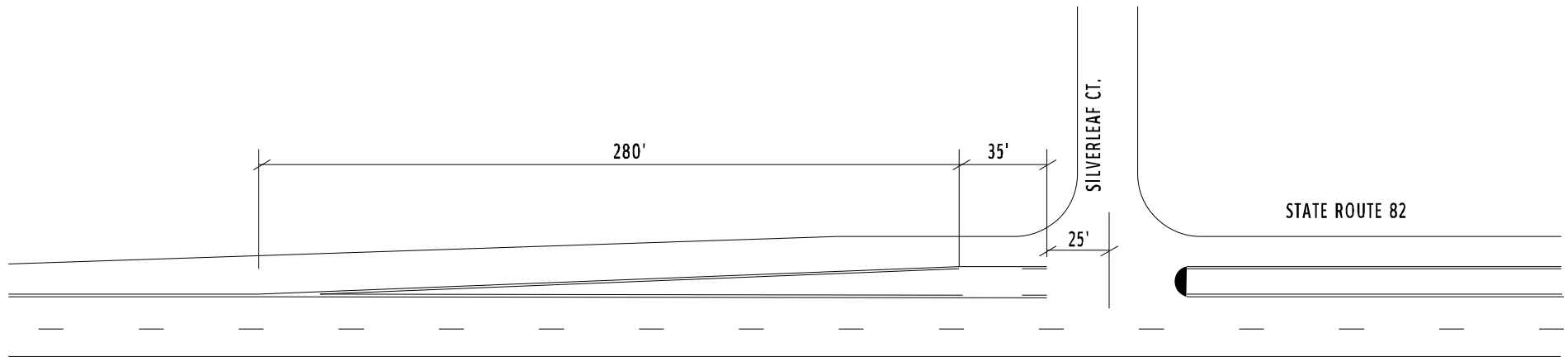
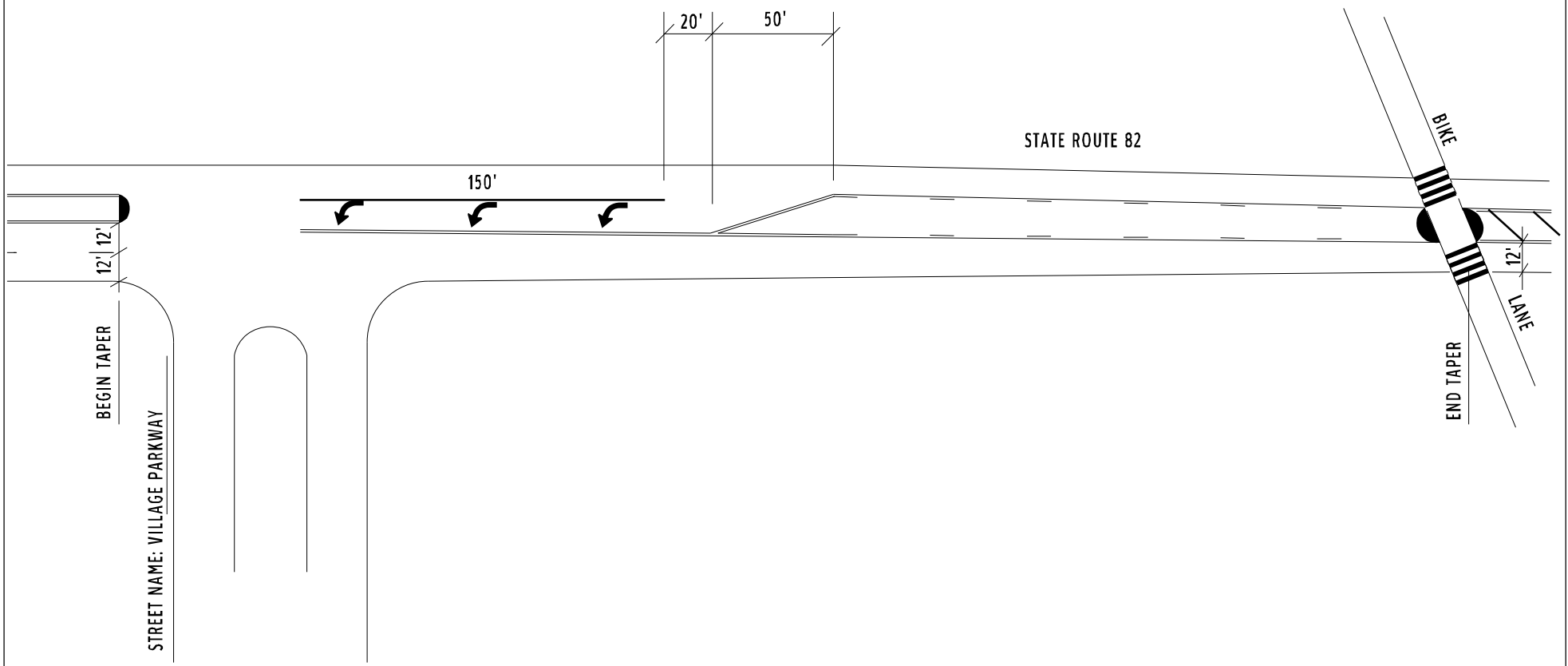




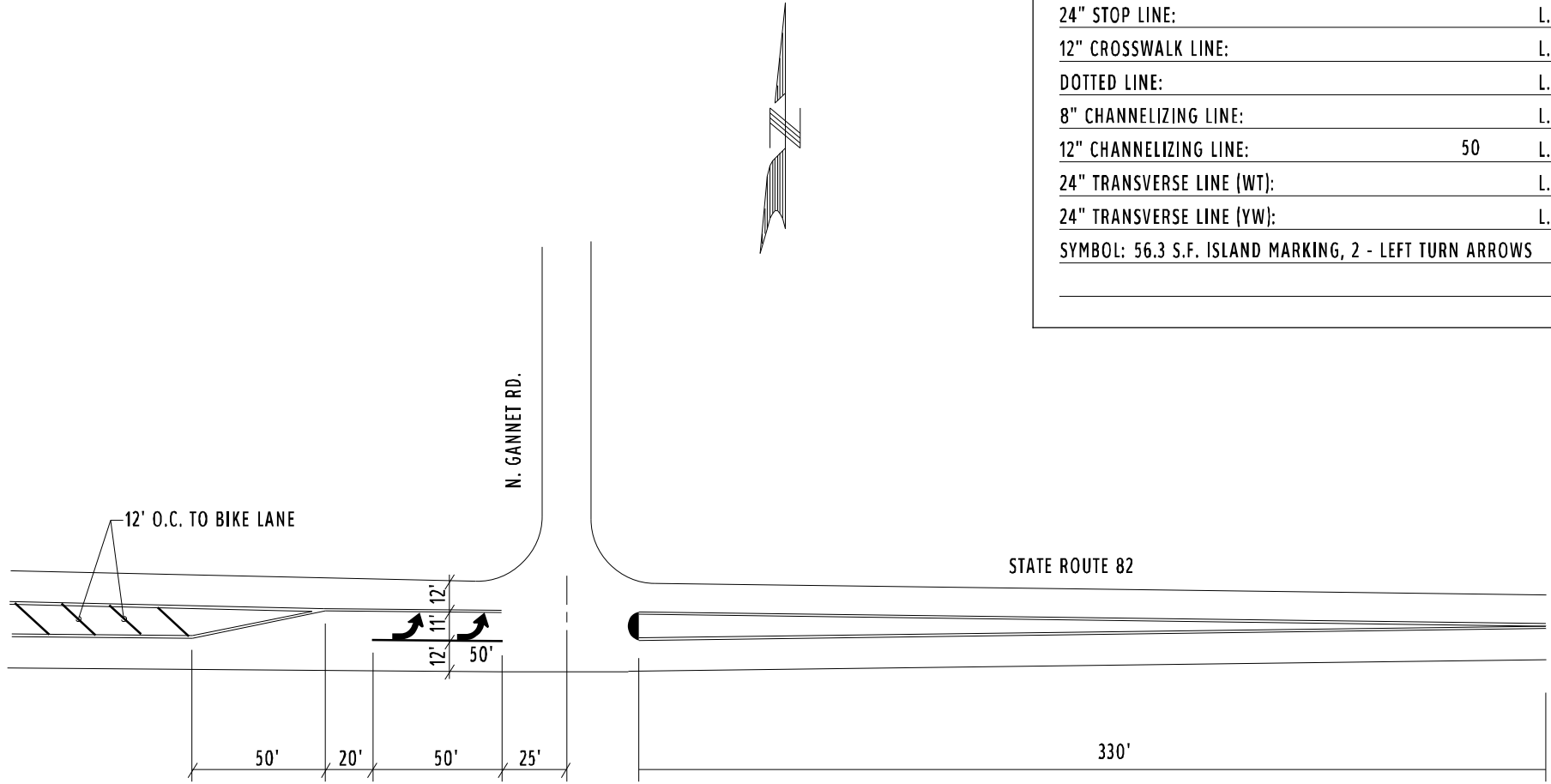
COUNTY:	SUMMIT
LOCATION:	S.R. 82 AT SILVERLEAF CT.
S.L.M.:	1.271
24" STOP LINE:	L.F.
12" CROSSWALK LINE:	L.F.
DOTTED LINE:	L.F.
8" CHANNELIZING LINE:	L.F.
12" CHANNELIZING LINE:	L.F.
24" TRANSVERSE LINE (WT):	L.F.
24" TRANSVERSE LINE (YW):	L.F.
SYMBOL: 57 S.F. - ISLAND MARKING	



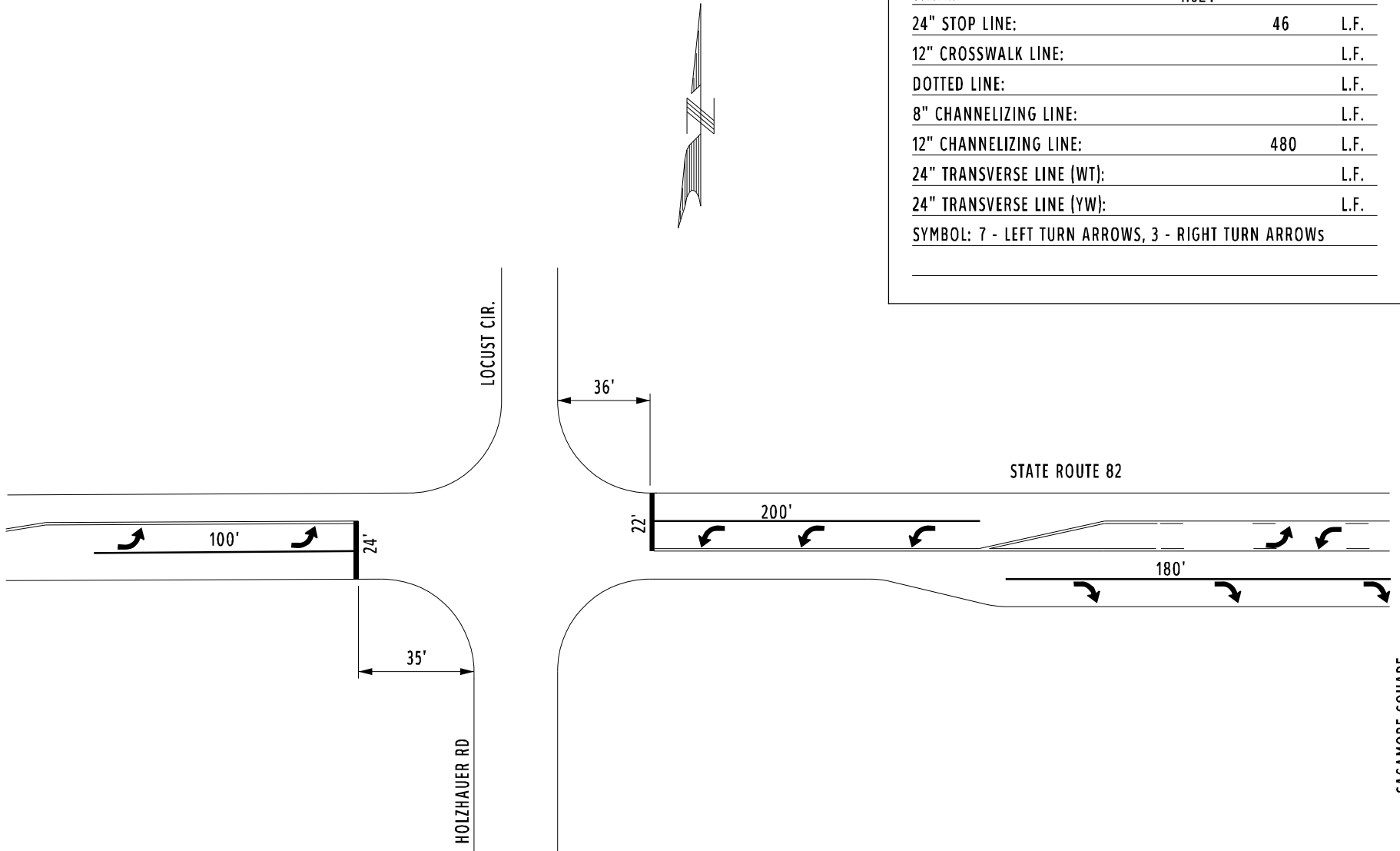
COUNTY:	SUMMIT	
LOCATION:	S.R. 82 AT VILLAGE PARKWAY	
S.L.M.:	1.331	
24" STOP LINE:		L.F.
12" CROSSWALK LINE:	200	L.F.
DOTTED LINE:		L.F.
8" CHANNELIZING LINE:		L.F.
12" CHANNELIZING LINE:	150	L.F.
24" TRANSVERSE LINE (WT):		L.F.
24" TRANSVERSE LINE (YW):	75	L.F.
SYMBOL: 169 S.F. ISLAND MKG'S, 3 - LEFT TURN ARROWS		



COUNTY:	SUMMIT
LOCATION:	S.R. 82 AT GANNET RD.
S.L.M.:	1,475
24" STOP LINE:	L.F.
12" CROSSWALK LINE:	L.F.
DOTTED LINE:	L.F.
8" CHANNELIZING LINE:	L.F.
12" CHANNELIZING LINE:	50 L.F.
24" TRANSVERSE LINE (WT):	L.F.
24" TRANSVERSE LINE (YW):	L.F.
SYMBOL: 56.3 S.F. ISLAND MARKING, 2 - LEFT TURN ARROWS	

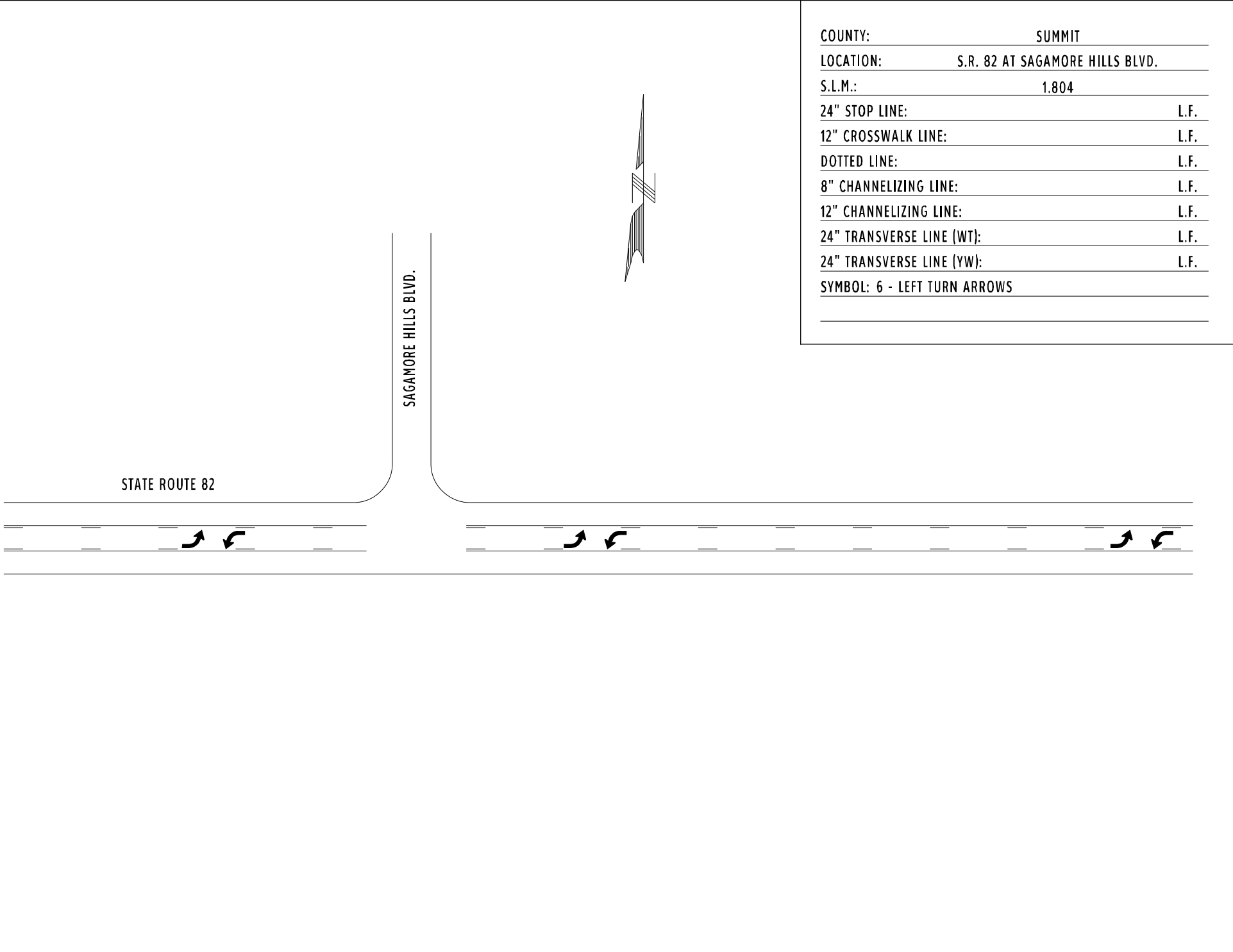


COUNTY:	SUMMIT	
LOCATION:	S.R. 82 AT HOLZHAUER	
S.L.M.:	1.624	
24" STOP LINE:	46	L.F.
12" CROSSWALK LINE:		L.F.
DOTTED LINE:		L.F.
8" CHANNELIZING LINE:		L.F.
12" CHANNELIZING LINE:	480	L.F.
24" TRANSVERSE LINE (WT):		L.F.
24" TRANSVERSE LINE (YW):		L.F.
SYMBOL: 7 - LEFT TURN ARROWS, 3 - RIGHT TURN ARROWS		

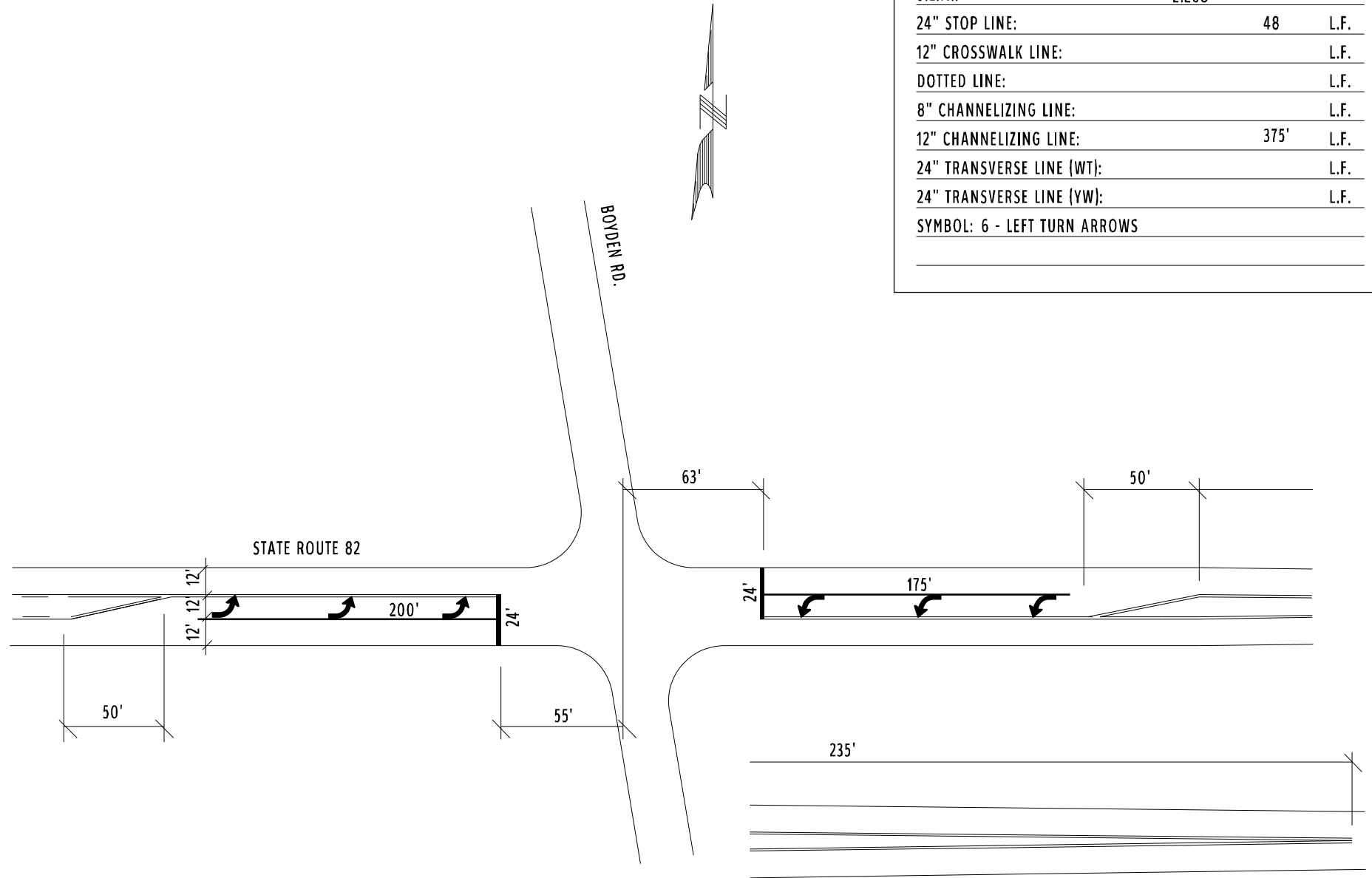


SAGAMORE SQUARE

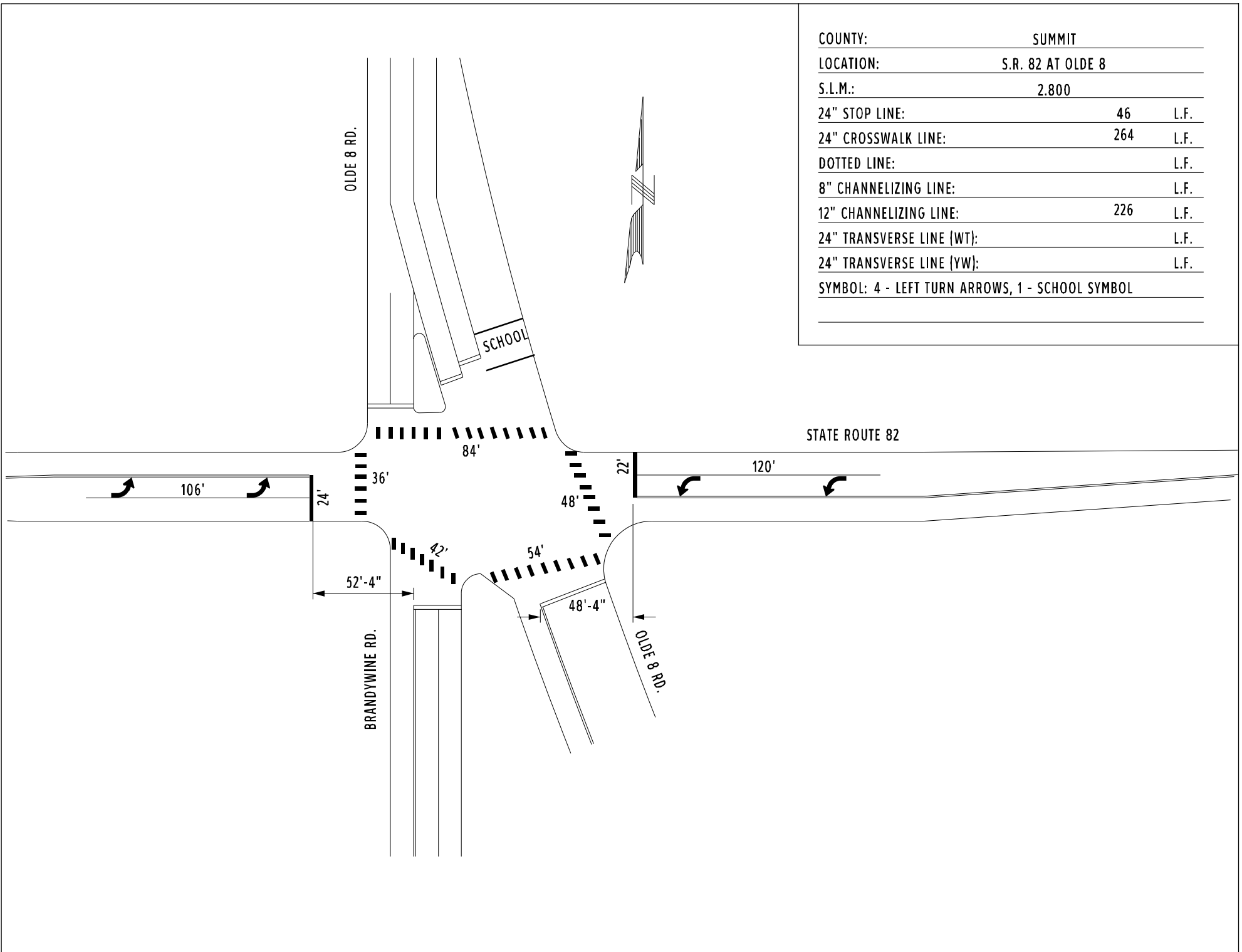
COUNTY:	SUMMIT
LOCATION:	S.R. 82 AT SAGAMORE HILLS BLVD.
S.L.M.:	1.804
24" STOP LINE:	L.F.
12" CROSSWALK LINE:	L.F.
DOTTED LINE:	L.F.
8" CHANNELIZING LINE:	L.F.
12" CHANNELIZING LINE:	L.F.
24" TRANSVERSE LINE (WT):	L.F.
24" TRANSVERSE LINE (YW):	L.F.
SYMBOL: 6 - LEFT TURN ARROWS	



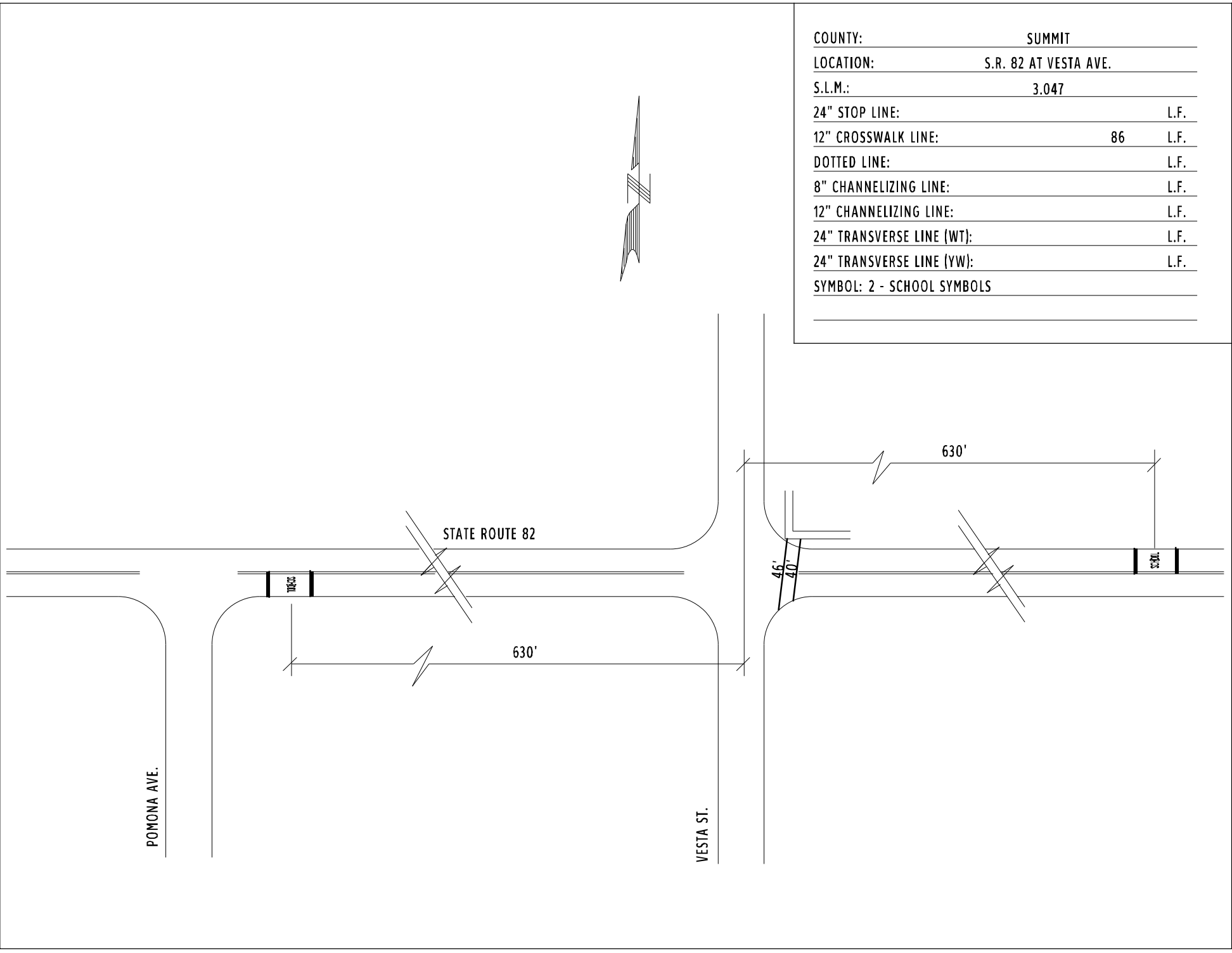
COUNTY:	SUMMIT
LOCATION:	S.R. 82 AT BOYDEN RD.
S.L.M.:	2.268
24" STOP LINE:	48 L.F.
12" CROSSWALK LINE:	L.F.
DOTTED LINE:	L.F.
8" CHANNELIZING LINE:	L.F.
12" CHANNELIZING LINE:	375' L.F.
24" TRANSVERSE LINE (WT):	L.F.
24" TRANSVERSE LINE (YW):	L.F.
SYMBOL: 6 - LEFT TURN ARROWS	



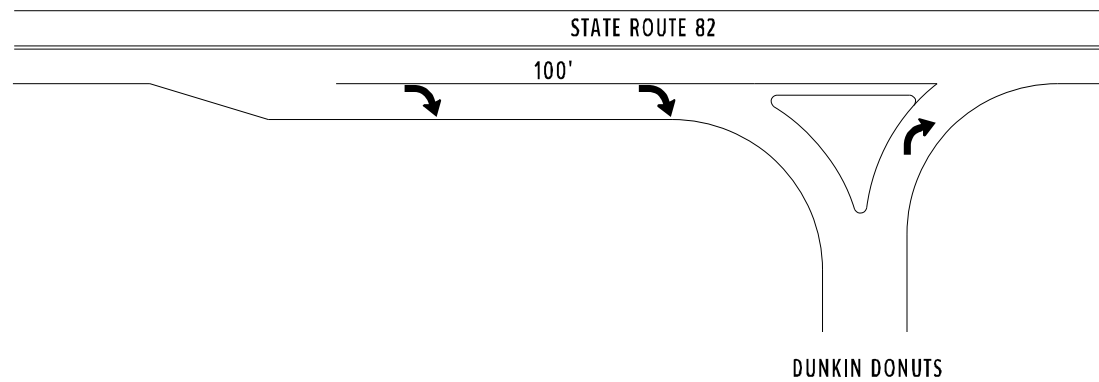
COUNTY:	SUMMIT	
LOCATION:	S.R. 82 AT OLDE 8	
S.L.M.:	2.800	
24" STOP LINE:	46	L.F.
24" CROSSWALK LINE:	264	L.F.
DOTTED LINE:		L.F.
8" CHANNELIZING LINE:		L.F.
12" CHANNELIZING LINE:	226	L.F.
24" TRANSVERSE LINE (WT):		L.F.
24" TRANSVERSE LINE (YW):		L.F.
SYMBOL: 4 - LEFT TURN ARROWS, 1 - SCHOOL SYMBOL		



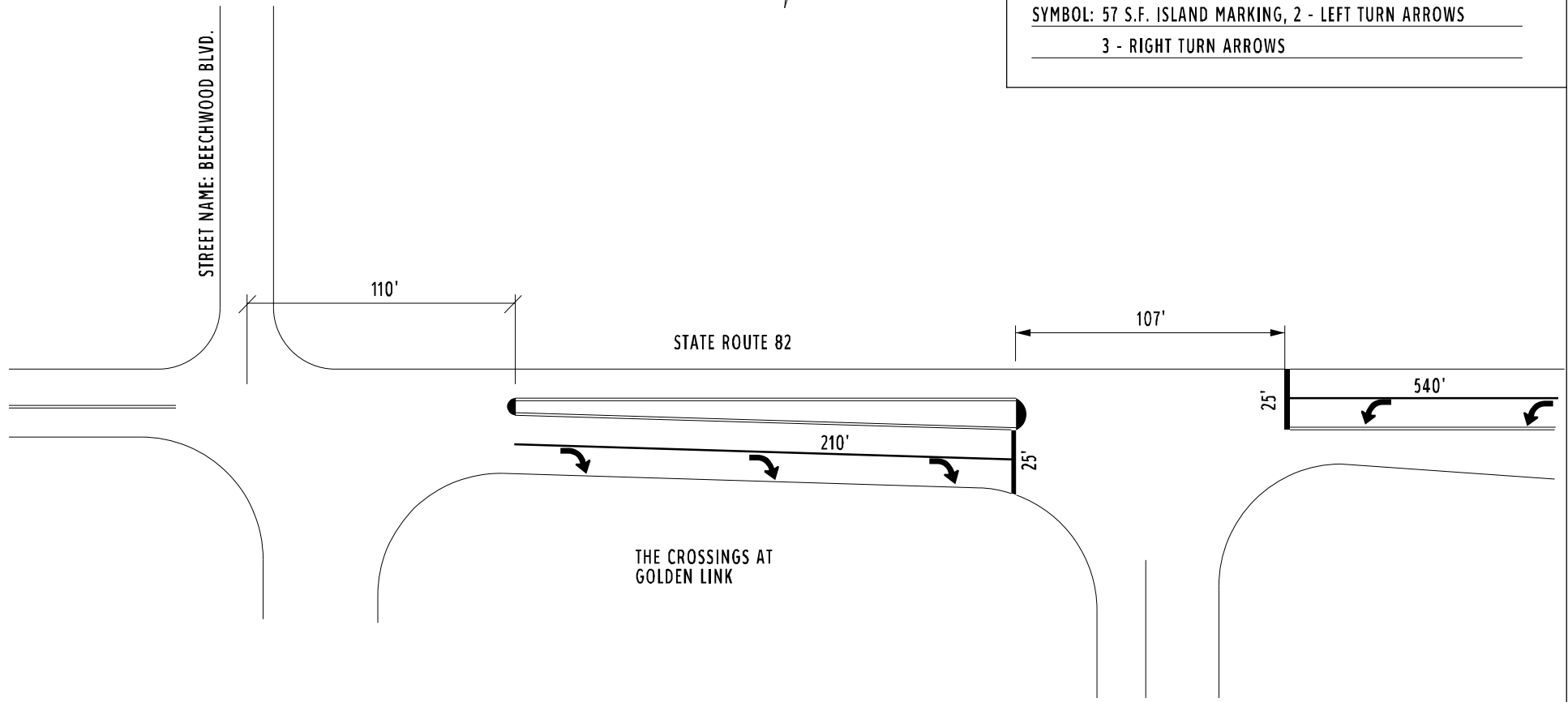
COUNTY:	SUMMIT	
LOCATION:	S.R. 82 AT VESTA AVE.	
S.L.M.:	3.047	
24" STOP LINE:		L.F.
12" CROSSWALK LINE:	86	L.F.
DOTTED LINE:		L.F.
8" CHANNELIZING LINE:		L.F.
12" CHANNELIZING LINE:		L.F.
24" TRANSVERSE LINE (WT):		L.F.
24" TRANSVERSE LINE (YW):		L.F.
SYMBOL: 2 - SCHOOL SYMBOLS		



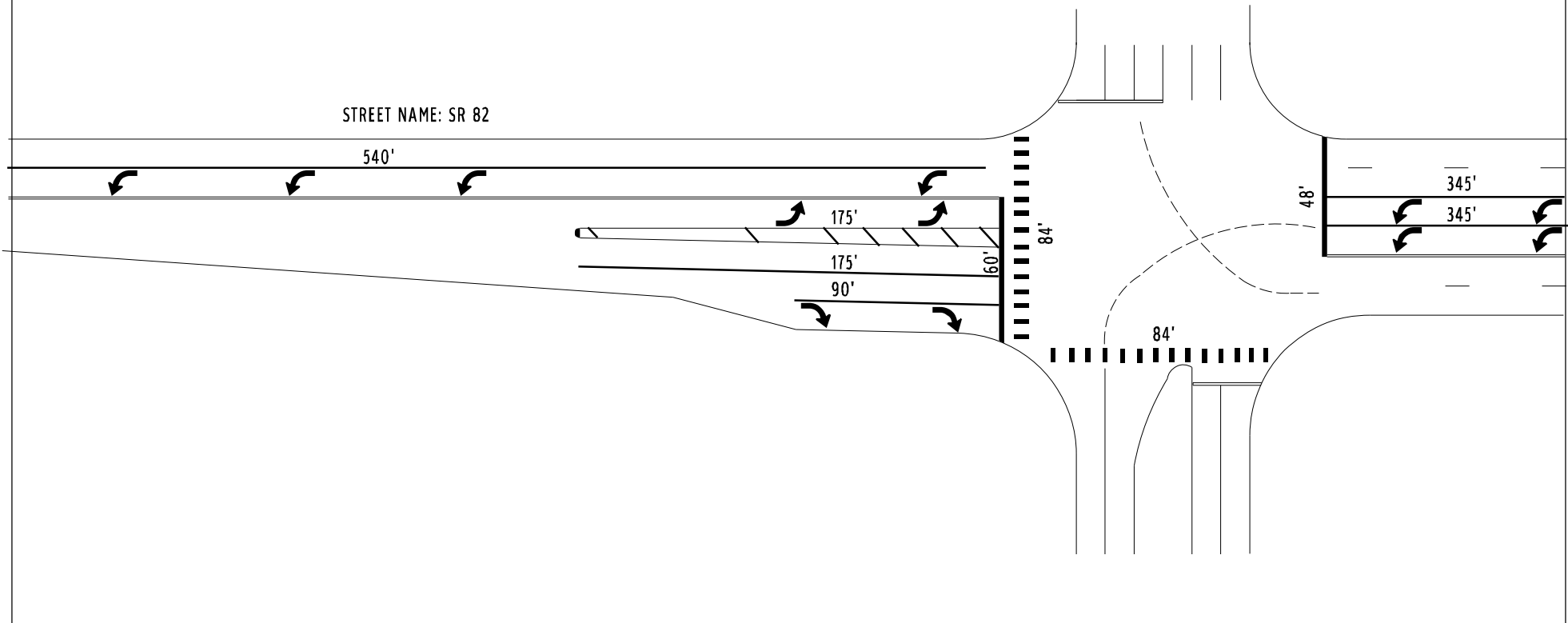
COUNTY:	SUMMIT
LOCATION:	S.R. 82 AT DUNKIN DONUTS
S.L.M.:	3.07
24" STOP LINE:	L.F.
12" CROSSWALK LINE:	L.F.
DOTTED LINE:	L.F.
8" CHANNELIZING LINE:	L.F.
12" CHANNELIZING LINE:	100 L.F.
24" TRANSVERSE LINE (WT):	L.F.
24" TRANSVERSE LINE (YW):	L.F.
SYMBOL: 3 - RIGHT TURN ARROWS	



COUNTY:	SUMMIT	
LOCATION:	S.R. 82 AT BEECHWOOD BLVD.	
S.L.M.:	3.14	
24" STOP LINE:	50	L.F.
12" CROSSWALK LINE:		L.F.
DOTTED LINE:		L.F.
8" CHANNELIZING LINE:		L.F.
12" CHANNELIZING LINE:	750	L.F.
24" TRANSVERSE LINE (WT):		L.F.
24" TRANSVERSE LINE (YW):		L.F.
SYMBOL: 57 S.F. ISLAND MARKING, 2 - LEFT TURN ARROWS		
3 - RIGHT TURN ARROWS		



COUNTY:	SUMMIT	
LOCATION:	S.R. 82 AT GOLDEN LINK BLVD.	
S.L.M.:	3.34	
24" STOP LINE:	108	L.F.
24" CROSSWALK LINE:	168	L.F.
DOTTED LINE:	75	L.F.
8" CHANNELIZING LINE:		L.F.
12" CHANNELIZING LINE:	1670	L.F.
24" TRANSVERSE LINE (WT):	50	L.F.
24" TRANSVERSE LINE (YW):		L.F.
SYMBOL: 10 - LEFT TURN ARROWS, 2 - RIGHT TURN ARROWS		



COUNTY:	SUMMIT
LOCATION:	S.R. 82 AT S.R. 8
S.L.M.:	3.37
24" STOP LINE:	52 L.F.
12" CROSSWALK LINE:	L.F.
DOTTED LINE:	L.F.
8" CHANNELIZING LINE:	L.F.
12" CHANNELIZING LINE:	670 L.F.
24" TRANSVERSE LINE (WT):	L.F.
24" TRANSVERSE LINE (YW):	L.F.
SYMBOL: 10 - LEFT TURN ARROWS, 6 - RIGHT TURN ARROWS	

