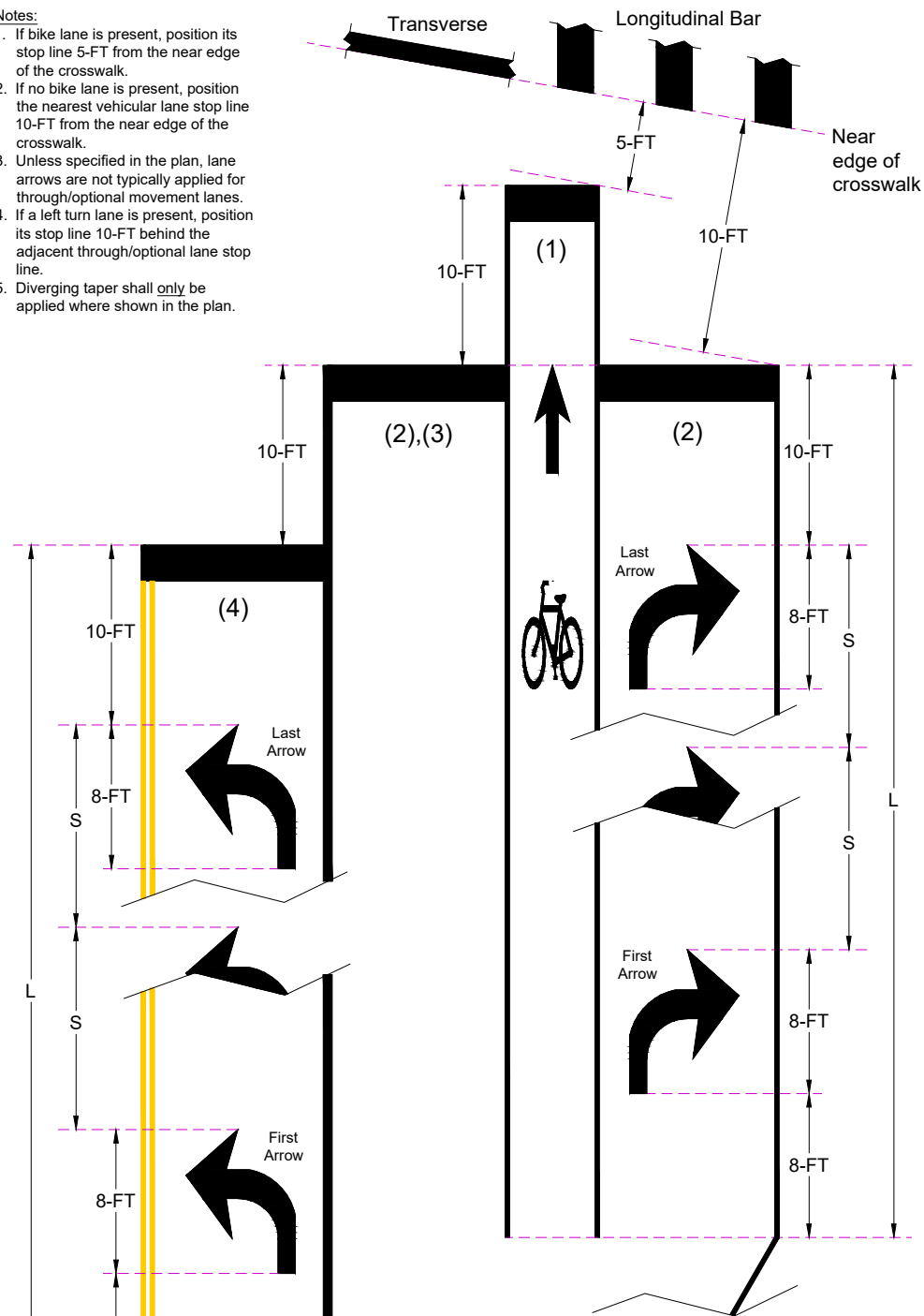


Stop Lines and Turn Lane Arrows

Notes:

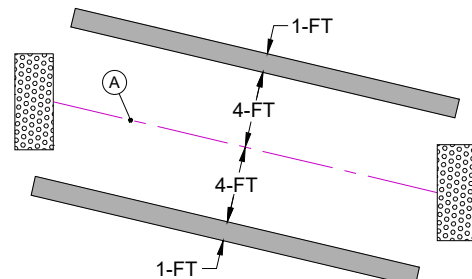
1. If bike lane is present, position its stop line 5-FT from the near edge of the crosswalk.
2. If no bike lane is present, position the nearest vehicular lane stop line 10-FT from the near edge of the crosswalk.
3. Unless specified in the plan, lane arrows are not typically applied for through/optional movement lanes.
4. If a left turn lane is present, position its stop line 10-FT behind the adjacent through/optional lane stop line.
5. Diverging taper shall only be applied where shown in the plan.



TURN LANE ARROWS		
TURN LANE LENGTH (L)	NO. OF ARROWS	ARROW POSITION AND SPACING (S)
<50'	1	CENTERED IN LANE
50'-100'	2	FIRST AND LAST ARROWS POSITIONED AS SHOWN ABOVE
		FIRST AND LAST ARROWS POSITIONED AS SHOWN ABOVE, INTERMEDIATE ARROW SPACING (S):
101'-175'	3	$S = (L - 26) / 2$
176'-250'	4	$S = (L - 26) / 3$
251'-325'	5	$S = (L - 26) / 4$
326'-400'	6	$S = (L - 26) / 5$

Crosswalk Markings (Transverse)

1. Spot Reference Line "A" connecting the center of detectable warning surfaces.
2. Mark Transverse Markings, 1-FT wide (TYP.), parallel to Reference Line "A" with 8-FT spacing (TYP.) between lines.

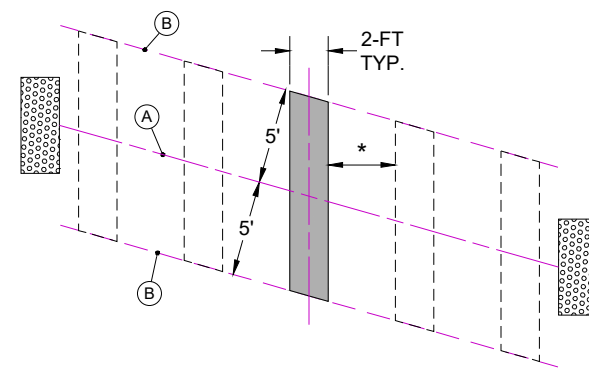


Crosswalk Markings (High-Visibility)

1. Spot Reference Line "A" connecting the center of detectable warning surfaces.
2. Spot two additional Reference Lines "B" parallel to, and 5-FT (TYP.) from, Reference Line "A".
3. Mark first bar, per plan, according to Layout 1 or 2 below.
4. Apply additional markings, at spacing per plan (*), proceeding out toward each side of the roadway.

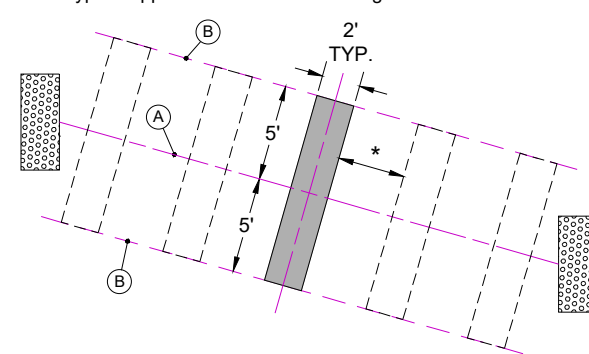
Layout 1

- Bars Parallel To Line of Traffic
- Typical applications: Midblock crosswalks or crosswalks on free flow approaches at intersections.

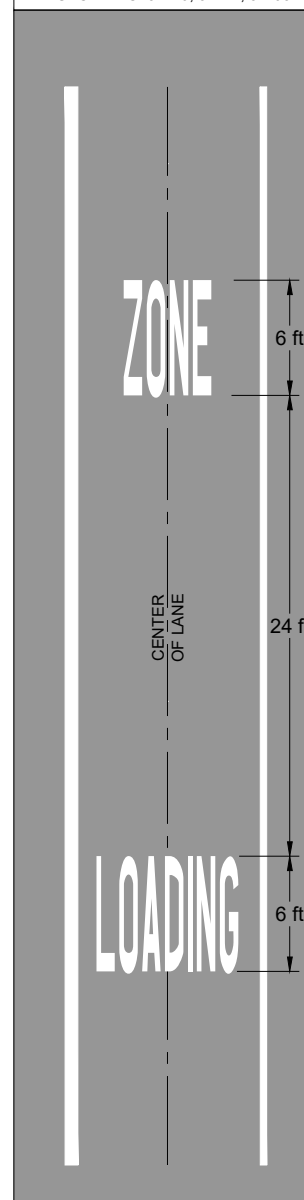


Layout 2

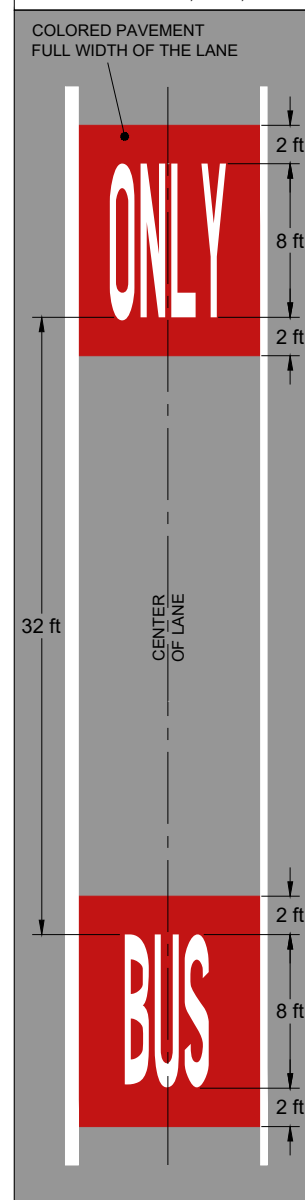
- Bars Perpendicular To Reference Line "A"
- Typical application: Crosswalks at signalized intersections.



LOADING ZONE Word Markings MUTCD SEC. 3B.20, 3B.21, 3E.03



BUS ONLY Word Markings MUTCD SEC. 3B.20, 3B.21, 3E.03



Grade Crossing Pavement Marking Symbol MUTCD FIG. 8C-2(A)

