

Released for Construction  
Thomas J Powell, PE  
06/21/2021

STATE OF OHIO  
DEPARTMENT OF TRANSPORTATION

SUM-76-8.24  
SUM-77-9.74  
SUM-8-0.00

SUMMIT COUNTY  
CITY OF AKRON

PROJECT DESCRIPTION

THE AKRON CENTRAL INTERCHANGE PROJECT (PID 102329) INCLUDES RECONSTRUCTION OF IR-76 EB/WB PAVEMENT FROM SLM 11.05 (IR-76) TO SLM (IR-76) FOR APPROX. 1.16 MILES OF MAINLINE WORK. THIS PROJECT ALSO INCLUDES REPLACEMENT OF TWO FREEWAY STRUCTURES (RAMP N AND RAMP O) ON NEW ALIGNMENTS, WIDENING OF TWO EXISTING BRIDGES (IR-76 EB OVER BROWN STREET AND IR-76 WB OVER INMAN STREET), CONSTRUCTION OF A NEW PEDESTRIAN/MULTI-USE OVERPASS SPANNING SR-8, AND CONSTRUCTION OF NOISE BARRIERS AT THE PERIMETER OF THE INTERCHANGE. PORTIONS OF SR-8, LANE O AND LANE S ARE TO BE RESURFACED. THE EXISTING IR-76 WB TO INMAN STREET AND IR-77 SB TO LOVERS LANE WILL BE REMOVED PERMANENTLY, AS WELL AS THE EXISTING LAFOLLETTE STREET BRIDGE OVER SR-8 (SUM-77-1184).

BUILDABLE UNIT 14 DESCRIPTION

THIS BUILDABLE UNIT INCLUDES THE REHABILITATION OF TWO STRUCTURES ALONG SR-8 FROM BEACON STREET TO EXCHANGE STREET AND TEN STRUCTURES ON IR-76 FROM MAIN ST. TO HOLY CROSS BOULEVARD.

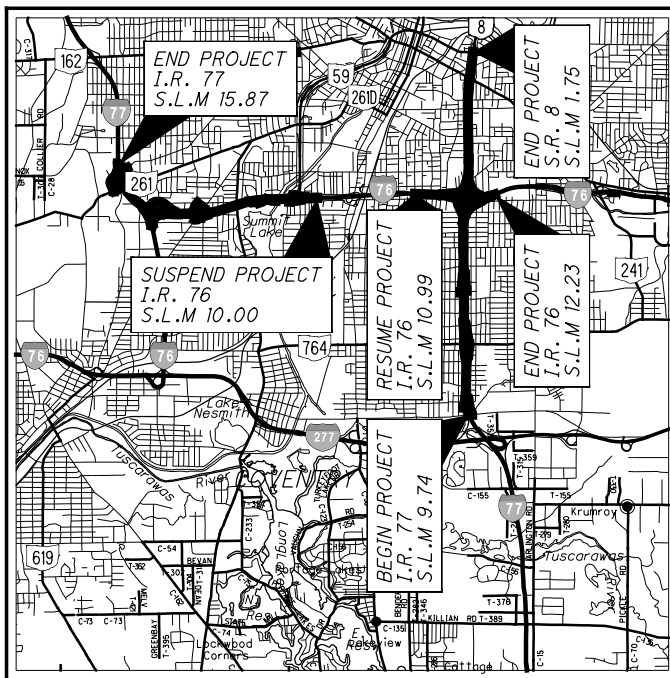
LIMITED ACCESS

THIS IMPROVEMENT IS ESPECIALLY DESIGNED FOR THROUGH TRAFFIC AND HAS BEEN DECLARED A LIMITED ACCESS HIGHWAY OR FREEWAY BY ACTION OF THE DIRECTOR IN ACCORDANCE WITH THE PROVISIONS OF SECTION 5511.02 OF THE OHIO REVISED CODE.

2019 SPECIFICATIONS

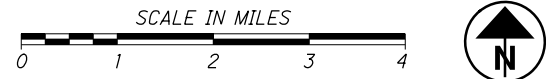
THE STANDARD SPECIFICATIONS OF THE STATE OF OHIO, DEPARTMENT OF TRANSPORTATION, INCLUDING SUPPLEMENTAL SPECIFICATIONS LISTED IN THE PLANS AND CHANGES LISTED IN THE PROPOSAL SHALL GOVERN THIS IMPROVEMENT.

FEDERAL PROJECT NO.	E180(428)
CONSTRUCTION PROJECT NO.	21-3000
PID NO.	102329
RAILROAD INVOLVEMENT	NONE
SUM-76 / 77 / 8 - 8.24 / 9.74 / 0.00	



LOCATION MAP

LATITUDE: N 41° 03' 43" LONGITUDE: W 81° 30' 17"



PORTION TO BE IMPROVED	—————	—————
INTERSTATE HIGHWAY	—————	—————
FEDERAL ROUTES	—————	—————
STATE ROUTES	—————	—————
COUNTY & TOWNSHIP ROADS	—————	—————
OTHER ROADS	—————	—————

DESIGN DESIGNATION

MAINTENANCE OF TRAFFIC PLANS:  
SEE BU-2A, BU-2B & BU-4  
ROADWAY PLANS:  
SEE BU-28 & BU-33

DESIGN EXCEPTIONS

N/A

INDEX OF SHEETS:

TITLE SHEET	1
LOCATION MAP	2
GENERAL NOTES	3-5
TRANSVERSE SECTIONS	6
STRUCTURES OVER 20'	
SUM-76-1035N	3-6
SUM-76-1042N	3-6
SUM-76-1043	3-6
SUM-76-1044	3-6
SUM-76-1048N	3-6
SUM-76-1085	3-6
SUM-76-1179R	3-6
SUM-76-1077N	3-6
SUM-8-0064	7-8
SUM-8-0086	9-10
SUM-76-1102	11-13
SUM-76-1200	14-16

STANDARD CONSTRUCTION DRAWINGS						SUPPLEMENTAL SPECIFICATIONS	
VPF-1-99	7/20/18					848	1/15/21

**UNDERGROUND UTILITIES**  
Contact Two Working Days  
Before You Dig

**OHIO811.org**  
Before You Dig

OHIO811, 8-1-1, or 1-800-362-2764  
(Non-members must be called directly)

PLAN PREPARED BY:



ENGINEERS SEAL:  
FOR STRUCTURES OVER 20'

**KELLY D. CHRISMAN**  
REGISTERED PROFESSIONAL ENGINEER  
STATE OF OHIO  
68020

SIGNED:   
DATE: 6/11/2021

**BU-14  
STRUCTURES**

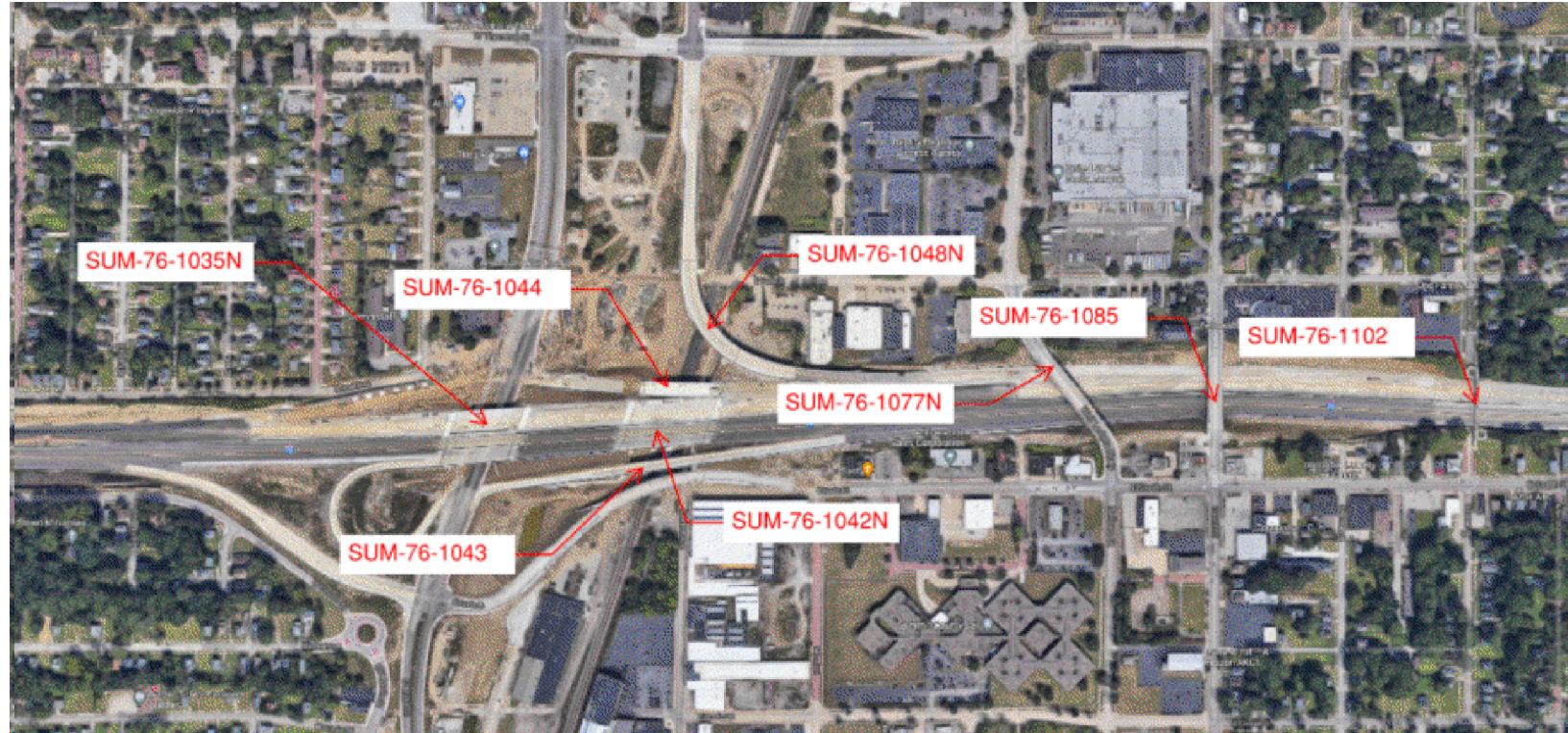
S.R. 8 & I-76  
**BRIDGE REHABILITATIONS**

**RELEASED FOR  
CONSTRUCTION  
JUNE 11, 2021**

ISSUE RECORD: NO. DATE DESCRIPTION  
 pw:\v\ANVAD1PWINT01\parsons.com\Ohio State\Documents\DB-Akron Beltway Rehab\10 - Design\102329\Structures\BU-14\Sheets\008\_0064\_-\_GT001.dgn\_Sheet\_6/16/2021\_3:59:05 PM KChrisman

ISSUE RECORD	
NO.	DATE

pw:\V\ANVA01PWINT01.parsons.com:Ohio State\Documents\DB-Akron Beltway Rehab\10 - Design\102329\Structures\BU-14\Sheets\008\_0064\_MD002.dgn Sheet 6/16/2021 3:59:11 PM kChrisman

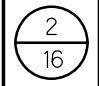


LOCATION MAP



LOCATION MAP

Released for Construction  
 Thomas J Powell, PE  
 06/21/2021

	<b>SUM-76/77/8-8.24/9.74/0.00</b> PID No. 102329	<b>LOCATION MAP</b> BRIDGE NO. SUM-8-0064, SUM-8-0086, SUM-76-1035N, SUM-76-1042N, SUM-76-1043, SUM-76-1044, SUM-76-1048N, SUM-76-1077N, SUM-76-1085, SUM-76-1102, SUM-76-1179R, SUM-76-1200		DESIGNED KDC CHECKED JAT	DRAWN KDC REVISED	REVIEWED CCJ STRUCTURE FILE NUMBER	DATE 5/10/21	DESIGN AGENCY <b>PRIME</b> 8415 Atlas Road Columbus Ohio 43231
	SUM-76-1035N, SUM-76-1044, SUM-76-1043, SUM-76-1042N, SUM-76-1048N, SUM-76-1077N, SUM-76-1085, SUM-76-1102, SUM-76-1179R, SUM-76-1200	KDC JAT	KDC REVISED	CCJ STRUCTURE FILE NUMBER	5/10/21	PRIME 8415 Atlas Road Columbus Ohio 43231		

**STRUCTURE GENERAL NOTES**

Released for Construction  
Thomas J Powell, PE

06/21/2021

**STANDARD DRAWINGS:**

REFER TO THE FOLLOWING STANDARD BRIDGE DRAWINGS:

REVISED

VPF-1-90 7/20/2018

**EXISTING STRUCTURE VERIFICATION:**

DETAILS AND DIMENSIONS SHOWN ON THESE PLANS PERTAINING TO THE EXISTING STRUCTURE HAVE BEEN OBTAINED FROM PLANS OF THE EXISTING STRUCTURE AND FROM FIELD OBSERVATIONS AND MEASUREMENTS. CONSEQUENTLY, THEY ARE INDICATIVE OF THE EXISTING STRUCTURE AND THE PROPOSED WORK BUT THEY SHALL BE CONSIDERED TENTATIVE AND APPROXIMATE. THE CONTRACTOR IS REFERRED TO CMS SECTIONS 102.05, 105.02 AND 513.04.

**EXISTING BRIDGE PLANS:**

EXISTING AND REHABILITATION BRIDGE PLANS HAVE BEEN PROVIDED BY ODOT DISTRICT 4.

**PROPOSED WORK:**

SUM-8-0064 (S.R. 8 OVER BEACON ST.) & SUM-8-0086 (S.R. 8 OVER EXCHANGE ST.):

- REMOVE SPALLS AND DELAMINATIONS OVER SAFETY SENSITIVE AREAS (PAVEMENT, SHOULDERS, SIDEWALKS, ETC.) FROM THE FLOOR AND SEAL WITH EPOXY-URETHANE.
- INSPECT SUBSTRUCTURE AND PERFORM REQUIRED PATCHING.
- REMOVE EXISTING OVERLAY ON DECK & APPROACH SLABS USING HYDRODEMOLITION AND REPLACE WITH MICRO-SILICA CONCRETE OVERLAY. ADJUST CROWN ON SOUTHBOUND SUM-8-0064.
- REMOVE EXISTING SEALER (IF PRESENT) PER C&MS 512 FROM SUPERSTRUCTURE AND SUBSTRUCTURE AND SEAL WITH EPOXY-URETHANE SEALER.
- REPAIR AREAS OF EROSION AT THE RIGHT FORWARD CORNER OF THE STRUCTURE AT SUM-8-0064.
- REMOVE EXISTING STRUCTURE IDENTIFICATION SIGNS (IF PRESENT) AND INSTALL NEW STRUCTURE IDENTIFICATION SIGNS IN THE APPROACH DIRECTION(S).
- PROVIDE VERTICAL CLEARANCE MEASUREMENTS PRIOR TO CONSTRUCTION.

SUM-76-1179R (I-76 OVER INMAN ST.)

- SEAL BRIDGE DECK AND APPROACH SLABS WITH A GRAVITY FED RESIN.
- REMOVE SPALLS AND DELAMINATIONS OVER SAFETY SENSITIVE AREAS (PAVEMENT, SHOULDERS, SIDEWALKS, ETC.) FROM THE FLOOR AND SEAL WITH EPOXY-URETHANE.
- INSPECT SUBSTRUCTURE AND PERFORM REQUIRED PATCHING.
- REMOVE EXISTING SEALER (IF PRESENT) PER C&MS 512 FROM SUPERSTRUCTURE AND SUBSTRUCTURE AND SEAL WITH EPOXY-URETHANE SEALER.
- REMOVE EXISTING STRUCTURE IDENTIFICATION SIGNS (IF PRESENT) AND INSTALL NEW STRUCTURE IDENTIFICATION SIGNS IN THE APPROACH DIRECTION(S).
- PROVIDE VERTICAL CLEARANCE MEASUREMENTS PRIOR TO CONSTRUCTION AND AFTER CONSTRUCTION.

**PROPOSED WORK (CONT'D):**

SUM-76-1200 (HOBAN PEDESTRIAN BRIDGE OVER I-76):

- SEAL BRIDGE DECK AND APPROACHES WITH A GRAVITY FED RESIN.
- REMOVE SPALLS AND DELAMINATIONS OVER SAFETY SENSITIVE AREAS (PAVEMENT, SHOULDERS, SIDEWALKS, ETC.) FROM THE FLOOR AND SEAL WITH EPOXY-URETHANE.
- INSPECT SUBSTRUCTURE AND PERFORM REQUIRED PATCHING.
- REMOVE EXISTING SEALER (IF PRESENT) PER C&MS 512 FROM SUPERSTRUCTURE AND SUBSTRUCTURE AND SEAL WITH EPOXY-URETHANE SEALER.
- REMOVE ALL DIRT AND DEBRIS FROM BEAM SEATS, DRAINAGE SYSTEMS (IF PRESENT), AND BRIDGE JOINTS.
- PAINT STRUCTURAL STEEL ACCORDING TO C&MS 514.
- REMOVE EXISTING VANDAL PROTECTION FENCE AND ORIGINAL HANDRAIL. INSTALL NEW VPF-1-90 (12' CURVED FENCE).
- REMOVE EXISTING STRUCTURE IDENTIFICATION SIGNS (IF PRESENT) AND INSTALL NEW STRUCTURE IDENTIFICATION SIGNS IN THE APPROACH DIRECTION(S).
- PROVIDE VERTICAL CLEARANCE MEASUREMENTS PRIOR TO CONSTRUCTION AND AFTER CONSTRUCTION.
- INSPECT BRIDGE DECK AND PERFORM REQUIRED PATCHING.

SUM-76-1035N (I-76 OVER SOUTH MAIN ST.), SUM-76-1042N (I-76 OVER SWEITZER AVE. & CSXT RR), SUM-76-1043 (I-76 RAMP W-6 OVER SWEITZER AVE. & CSXT RR), SUM-76-1044 (I-76 RAMP W-5A OVER SWEITZER AVE. AND CSXT RR), SUM-76-1048N (I-76 RAMP W5 OVER SWEITZER AVE. AND CSXT RR), SUM-76-1077N (WOLF-LEDGES PARKWAY OVER I-76), & SUM-76-1085 (GRANT ST. OVER I-76).

- SEAL BRIDGE DECK WITH SOLUBLE REACTIVE SEALER (SRS).
- REMOVE EXISTING STRUCTURE IDENTIFICATION SIGNS (IF PRESENT) AND INSTALL NEW STRUCTURE IDENTIFICATION SIGNS IN THE APPROACH DIRECTION(S).
- PROVIDE VERTICAL CLEARANCE MEASUREMENTS PRIOR TO CONSTRUCTION ONLY.

SUM-76-1102 (SUMNER ST. PEDESTRIAN BRIDGE OVER I-76)

- SEAL BRIDGE DECK AND APPROACH SLABS WITH A GRAVITY FED RESIN.
- REMOVE SPALLS AND DELAMINATIONS OVER SAFETY SENSITIVE AREAS (PAVEMENT, SHOULDERS, SIDEWALKS, ETC.) FROM THE FLOOR AND SEAL WITH EPOXY-URETHANE.
- INSPECT SUBSTRUCTURE AND PERFORM REQUIRED PATCHING.
- REMOVE EXISTING SEALER (IF PRESENT) PER C&MS 512 FROM SUPERSTRUCTURE AND SUBSTRUCTURE AND SEAL WITH EPOXY-URETHANE SEALER.
- REMOVE ALL DIRT AND DEBRIS FROM BEAM SEATS, DRAINAGE SYSTEMS (IF PRESENT), AND BRIDGE JOINTS.
- PAINT STRUCTURAL STEEL ACCORDING TO C&MS 514.
- REMOVE EXISTING VANDAL PROTECTION FENCE AND INSTALL NEW VPF-1-90 (12' CURVED FENCE)
- REMOVE EXISTING STRUCTURE IDENTIFICATION SIGNS (IF PRESENT) AND INSTALL NEW STRUCTURE IDENTIFICATION SIGNS IN THE APPROACH DIRECTION(S).
- PROVIDE VERTICAL CLEARANCE MEASUREMENTS PRIOR TO CONSTRUCTION AND AFTER CONSTRUCTION.
- INSPECT BRIDGE DECK AND PERFORM REQUIRED PATCHING.

**VANDAL PROTECTION FENCE INSTALLATION:**

VANDAL PROTECTION FENCE WILL BE GALVANIZED AND POWDER COATED FEDERAL COLOR NO. 27038. THIS INCLUDES ALL POSTS, FENCE FABRIC, RAILS, POSTS, PLATES, TIE WIRES, NUTS, BOLTS, CAULK AND OTHER VISIBLE HARDWARE.

THIS WORK WILL BE PERFORMED AT THE FOLLOWING BRIDGE LOCATION:

SUM-76-1102  
SUM-76-1200

**SPECIAL - STRUCTURES: CONCRETE SPALL REMOVAL:**

THIS WORK WILL CONSIST OF REMOVING ALL VISIBLY SPALLED AREAS OF THE BOTTOM DECK FLOOR OF VARIOUS STRUCTURES WITHOUT SOUNDING. AFTER SPALLED CONCRETE AREAS HAVE BEEN REMOVED, REMOVAL AREAS WILL BE SEALED WITH ITEM 512, SEALING OF CONCRETE SURFACES (EPOXY-URETHANE).

CONCRETE SPALL REMOVAL WILL BE PAID FOR AT THE UNIT BID PRICE FOR SPECIAL-STRUCTURE MISC.: CONCRETE SPALL REMOVAL. THIS PRICE WILL INCLUDE THE COST OF LABOR, EQUIPMENT, AND ALL INCIDENTALS REQUIRED TO COMPLETE THIS WORK.

THE FOLLOWING ESTIMATED QUANTITIES WERE PROVIDED BY ODOT AT BID TIME:

**SPEC, STRUCTURES: CONCRETE SPALL REMOVAL**

10 SQ YD - SUM-8-0064      10 SQ YD - SUM-76-1179R  
10 SQ YD - SUM-8-0086      10 SQ YD - SUM-76-1200  
10 SQ YD - SUM-76-1102

ITEM 512, SEALING OF CONCRETE SURFACES (EPOXY-URETHANE), FOR CONCRETE SPALL REMOVAL

10 SQ YD - SUM-8-0064      10 SQ YD - SUM-76-1179R  
10 SQ YD - SUM-8-0086      10 SQ YD - SUM-76-1200  
10 SQ YD - SUM-76-1102

THE DEPARTMENT WILL PAY FOR THE ACCEPTED QUANTITY AS APPROVED BY THE ENGINEER IN CHARGE.

**ITEM 519 - PATCHING CONCRETE STRUCTURES:**

THIS WORK WILL CONSIST OF INSPECTING AND MARKING OF DETERIORATED CONCRETE AREAS AT THE EXISTING BRIDGE DECK, ABUTMENTS AND PIERS, BY THE CONTRACTOR, TO BE CONFIRMED BY THE ENGINEER IN CHARGE. SPALLS FORMING ARE EVIDENCED BY A VISUAL EDGE. DELAMINATIONS THAT DO NOT HAVE A VISIBLE EDGE WILL BE CONFIRMED AND OUTLINED BY THE ENGINEER IN CHARGE. ALL APPROVED DELINEATED AREAS SHALL BE REPAIRED IN ACCORDANCE WITH ITEM 519 - PATCHING CONCRETE SURFACES & ITEM 519 - PATCHING CONCRETE BRIDGE DECK, TYPE C. REPAIR OF EXISTING CONCRETE WILL BE PAID FOR AT THE UNIT BID PRICE FOR PATCHING CONCRETE STRUCTURES. THIS PRICE WILL INCLUDE THE COST OF LABOR, EQUIPMENT, AND ALL INCIDENTALS REQUIRED TO COMPLETE THIS WORK.

THE FOLLOWING ESTIMATED QUANTITIES WERE PROVIDED BY ODOT AT BID TIME:

**ITEM 519, PATCHING CONCRETE STRUCTURES**

200 SF - SUM-8-0064      25 SF - SUM-76-1102  
200SF - SUM-8-0086      25 SF - SUM-76-1200  
50 SF - SUM-76-1179R

**ITEM 519, PATCHING CONCRETE BRIDGE DECK, TYPE C**

25 SY - SUM-76-1102  
25 SY - SUM-76-1200

**ITEM 514, PAINTING EXISTING STRUCTURAL STEEL, AS PER PLAN:**

THIS WORK CONSISTS OF FIELD PAINTING THE EXISTING STRUCTURAL STEEL. THE COATING SHALL BE A THREE-COAT PAINT SYSTEM CONSISTING OF AN ORGANIC ZINC PRIME COAT, AN EPOXY INTERMEDIATE COAT AND A URETHANE FINISH COAT ACCORDING TO C&MS 514.

THE FOLLOWING BRIDGES REQUIRE FIELD PAINTING:

STRUCTURE:	FEDERAL COLOR NO.
SUM-76-1102	10080
SUM-76-1200	15050

**ITEM SPECIAL - MISC.: VERTICAL CLEARANCE:** BEFORE ANY CONSTRUCTION TAKES PLACE AND AFTER ALL CONSTRUCTION HAS BEEN COMPLETED, A REGISTERED SURVEYOR WILL TAKE VERTICAL CLEARANCE MEASUREMENTS AT LOCATIONS INDICATED ON THE APPROVED ODOT FORM (AVAILABLE IN THE DISTRICT 4 STRUCTURES AND PAVEMENT OFFICE). FOR THE STRUCTURES WHERE THE PROPOSED WORK WILL NEITHER AFFECT THE POSITION OF THE LOWER CHORD NOR THE ROADWAY SURFACE BELOW, THE VERTICAL CLEARANCE DOES NOT NEED TO BE MEASURED AFTER ALL CONSTRUCTION HAS BEEN COMPLETED. THE FINAL MEASUREMENTS SHALL BE RECORDED ON THE FORM AND SUBMITTED TO THE PROJECT ENGINEER AND THE DISTRICT 4 STRUCTURES AND PAVEMENT ENGINEER. THE RECORD SHALL BEAR THE SEAL OF THE LICENSED SURVEYOR WHO HAS TAKEN THE MEASUREMENTS. THIS WORK SHALL BE PERFORMED AT ALL OF THE OVERHEAD STRUCTURES WITHIN THE PROJECT LIMITS.

THE VERTICAL CLEARANCE SHALL BE MEASURED PRIOR TO AND AFTER CONSTRUCTION AT THE FOLLOWING STRUCTURES:

SUM-76-1102  
SUM-76-1179R  
SUM-76-1200

THE VERTICAL CLEARANCE SHALL BE MEASURED ONLY PRIOR TO CONSTRUCTION AT THE FOLLOWING STRUCTURES:

SUM-8-0064  
SUM-8-0086  
SUM-76-1035N  
SUM-76-1042N (ROADWAY ONLY)  
SUM-76-1043 (ROADWAY ONLY)  
SUM-76-1044 (ROADWAY ONLY)  
SUM-76-1048N (ROADWAY ONLY)  
SUM-76-1077N  
SUM-76-1085

**STRUCTURE/CULVERT IDENTIFICATION SIGNS:**

STRUCTURE IDENTIFICATION SIGNS (I-H25b) WILL BE PLACED ON EACH APPROACH OFF THE RIGHT SHOULDER, FACING TRAFFIC, AND BEHIND THE GUARDRAIL IF APPLICABLE. A QUANTITY OF ONE SIGN PER APPROACH WILL BE INSTALLED. THE SIGNS WILL HAVE A NON-REFLECTIVE WHITE SHEETING BACKGROUND.

THE SIGNS WILL BE MOUNTED ON NEW NO. 2 POSTS AND WILL BE INSTALLED AS PER STANDARD CONSTRUCTION DRAWING TC-41.20, MOST CURRENT REVISION. EACH POST WILL BE 7.5' IN LENGTH.

INSTALL SIGNS FOR THE FOLLOWING STRUCTURES:

SUM-8-0064	SUM-76-1043	SUM-76-1085
SUM-8-0086	SUM-76-1044	SUM-76-1102
SUM-76-1035N	SUM-76-1048N	SUM-76-1179R
SUM-76-1042N	SUM-76-1077N	SUM-76-1200

**ITEM SPECIAL: STRUCTURE, MISC.: EROSION REPAIR:**

THE CONTRACTOR SHALL REPAIR ERODED AREAS WITHIN THE LIMITS OF THE RIGHT-OF-WAY. THE FOLLOWING ESTIMATED QUANTITIES WERE PROVIDED BY ODOT AT BID TIME:

SUM-8-0064 - 30 CY

THE DEPARTMENT WILL PAY FOR THE EXTENT OF REPAIR AS APPROVED BY THE ENGINEER IN CHARGE.

ISSUE RECORD:	NO.	DATE	DESCRIPTION

DESIGN AGENCY: **PRIME** STATE ENGINEERS, INC. Columbus, Ohio 43231

DATE: 5/10/21

REVIEWED: CCJ

DRAWN: KDC

DESIGNED: KDC

BRIDGE NO.: SUM-8-0064, SUM-8-0086, SUM-76-1035N, SUM-76-1042N, SUM-76-1043, SUM-76-1044, SUM-76-1048N, SUM-76-1077N, SUM-76-1085, SUM-76-1102, SUM-76-1179R, SUM-76-1200

GENERAL NOTES (1 OF 3)

SUM-76-77/8-8.24/9.74/0.00

PID No. 102329

3/16

**STRUCTURE GENERAL NOTES**

ITEM 848 - MICRO-SILICA MODIFIED CONCRETE OVERLAY USING HYDRODEMOLITION, AS PER PLAN  
 ITEM 848 - SURFACE PREPARATION USING HYDRODEMOLITION, AS PER PLAN  
 ITEM 848 - MICRO-SILICA MODIFIED CONCRETE OVERLAY (VARIABLE THICKNESS), MATERIAL ONLY, AS PER PLAN  
 ITEM 848 - FULL DEPTH REPAIR, AS PER PLAN

THESE ITEMS SHALL BE PERFORMED PER SUPPLEMENTAL SPECIFICATION "BRIDGE DECK REPAIR AND OVERLAY WITH CONCRETE USING HYDRO DEMOLITION" WITH THE FOLLOWING REVISIONS:  
 THE THICKNESS OF THE CONCRETE OVERLAY REMOVED, ASPHALT WEARING COURSE REMOVED, PROPOSED OVERLAY, AND THE DEPTH OF HYDRODEMOLITION SHALL BE AS SPECIFIED IN THE PLANS. CONSTRUCTION JOINTS WILL NOT BE PERMITTED IN THE WHEEL LINE.  
 (SEE 848.12) THE COMPONENTS OF THE MICRO-SILICA MODIFIED CONCRETE SHALL BE PROPORTIONED AS FOLLOWS.

CONCRETE TABLE  
 QUANTITIES PER CUBIC YARD  
 AGGREGATES (SSD)

AGG TYPE	FINE AGG (LB)	#8 COARSE AGG (LB)	AGG TOTAL (LB)	CEMENT CONTENT (LB)	MICRO SILICA (LB)	WATER TO CEMENT-ITIOUS RATIO	AIR CONTENT +/- 2%	FIBER (1/4" POLYPROPYLENE) (LB)
GRAVEL	1410	1430	2840	600	50	0.4	8	1
LIME-STONE	1410	1450	2860	600	50	0.4	8	1
SLAG	1300	1350	2650	600	50	0.4	8	1

\* ALL COARSE AGGREGATE SHALL HAVE AN ABSORPTION OF 1.00% OR GREATER AS DEFINED PER ASTM C127  
 \*\* FIBER MESH SHALL BE 100% VIRGIN POLYPROPYLENE IN A FIBRILLATED-NETWORK FORM AND SHALL BE 1/4" IN LENGTH.

THE WEIGHTS SPECIFIED IN THE CONCRETE TABLE WERE CALCULATED FOR MATERIALS OF THE FOLLOWING BULK SPECIFIC GRAVITIES (SSD): NATURAL SAND AND GRAVEL 2.62, LIMESTONE SAND 2.68, LIMESTONE 2.65, SLAG 2.30, MICRO-SILICA SOLIDS 2.20, AND PORTLAND CEMENT 3.15. FOR AGGREGATES OF SPECIFIC GRAVITIES DIFFERING MORE THAN PLUS OR MINUS 0.02 FROM THESE, THE WEIGHTS IN THE TABLE WILL BE CORRECTED. FIBER MESH WEIGHTS NOT INCLUDED IN MIX DESIGN. ALL COARSE AGGREGATE SHALL HAVE AN ABSORPTION OF 1.00% OR GREATER AS DEFINED BY ASTM C127 ALL OTHER REQUIREMENTS OF THE SUPPLEMENTAL SPECIFICATION SHALL REMAIN IN EFFECT.  
 (SEE 848.21) THE FINAL DECK SOUNDING MAY TAKE PLACE WITHIN 24 HOURS OF A RAIN, AND THE DECK DOES NOT HAVE TO BE COMPLETELY DRY.  
 (SEE 848.23) FULL DEPTH REPAIR IS NOT REQUIRED IF LESS THAN ONE HALF OF THE DECK ORIGINAL CONCRETE THICKNESS IS SOUND.  
 (SEE 848.29) THE WET CURE TIME IS REDUCED FROM 72 HOURS TO 24 HOURS OR UNTIL A BEAM BREAK OF 600 PSI IS ACHIEVED, WHICHEVER IS GREATER. AFTER THE 24 HOUR WET CURE, THE FINISHED OVERLAY SURFACE SHALL BE CURED BY SPRAYING A UNIFORM APPLICATION OF CURING MATERIAL OF 705.07, TYPE 1 OR 1D, AS PER CMS 511.14 METHOD (B) MEMBRANE CURING. IF THE CURING COMPOUND CAN NOT BE PLACED WITHIN THE SAME SHORT TERM CLOSURE PERIOD AS THE OVERLAY, THE CONTRACTOR MAY ALLOW TRAFFIC ONTO THE OVERLAY, AND SHALL, AT THE NEXT AVAILABLE SHORT TERM CLOSURE PERIOD, APPLY THE MEMBRANE CURING COMPOUND.

ITEM 848 - MICRO-SILICA MODIFIED CONCRETE OVERLAY USING HYDRODEMOLITION, AS PER PLAN  
 ITEM 848 - SURFACE PREPARATION USING HYDRODEMOLITION, AS PER PLAN  
 ITEM 848 - MICRO-SILICA MODIFIED CONCRETE OVERLAY (VARIABLE THICKNESS), MATERIAL ONLY, AS PER PLAN  
 ITEM 848 - FULL DEPTH REPAIR, AS PER PLAN (CONT'D)  
 (SEE 848.29) TRAFFIC WILL NOT BE PERMITTED ON THE FINISHED OVERLAY SURFACE UNTIL AFTER THE COMPLETION OF THE 24 HOUR WET CURE, AND AFTER TWO TEST BEAMS HAVE ATTAINED AN AVERAGE MODULUS OF RUPTURE OF 600 PSI  
 (4.2 Mpa). (SEE 848.30) THE OVERLAY SURFACE EVAPORATION RATE REQUIREMENTS ARE IN EFFECT FROM 9:30 AM TO 11:00 PM. THEY ARE NOT IN EFFECT FROM 11:00 PM TO 11:00 AM.  
 (SEE 848.31) FOR EACH PHASE, THE CONTRACTOR SHALL PROVIDE ENOUGH MATERIAL FOR TWO BEAM BREAKS EACH AT 12 HOURS, 24 HOURS, 36 HOURS, AND 48 HOURS. THE DEPARTMENT WILL PERFORM THE BEAM BREAK TESTS AND DOCUMENT THE TIME OF THE POUR, THE TIME OF THE BEAM BREAK TESTS, AND THE MODULUS OF RUPTURE FOR EACH BEAM UNTIL THE MODULUS OF RUPTURE OF THE TWO TESTS IS NOT LESS THAN 650 PSI (4.5 Mpa). TRAFFIC IS ALLOWED ON THE OVERLAY AT 600 PSI (4.5 Mpa). ALL OTHER REQUIREMENTS OF THE SUPPLEMENTAL SPECIFICATION SHALL REMAIN IN EFFECT.

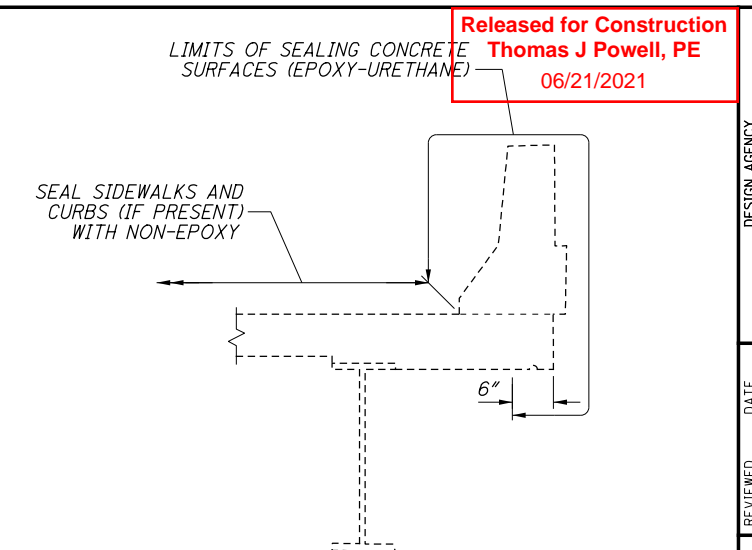
THE FOLLOWING ESTIMATED QUANTITIES WERE PROVIDED BY ODOT AT BID TIME:

- ITEM 848, HAND CHIPPING
  - 375 SY - SUM-8-0064
  - 300 SY - SUM-8-0086
- ITEM 848, FULL DEPTH REPAIR
  - 2 CY - SUM-8-0064
  - 2 CY - SUM-8-0086
- ITEM SPECIAL - CONCRETE OVERLAY, VARIABLE THICKNESS, MATERIAL ONLY
  - 20 CY - SUM-8-0064
  - 20 CY - SUM-8-0086

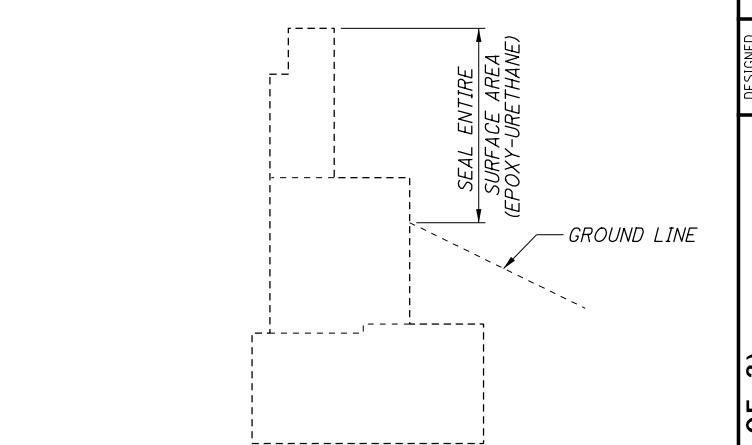
ITEM SPECIAL - SEALING OF CONCRETE:  
 THE CONTRACTOR SHALL REMOVE EXISTING COATINGS AND PREPARE SURFACES TO BE SEALED ACCORDING TO C&MS 512. ALL SUPERSTRUCTURE AND ALL EXPOSED SUBSTRUCTURE (AS SHOWN IN THE DETAILS ON THIS SHEET) EXCEPT TOPS OF PIER CAPS, SHALL BE SEALED WITH AN EPOXY-URETHANE SEALER. APPLY THE EPOXY-URETHANE SEALER TO THE PARAPETS (DETAIL 'A') AND ALL EXPOSED CONCRETE SURFACES AT THE ABUTMENTS (DETAIL 'B') AND PIERS (DETAIL 'C'). THIS WORK WILL BE DONE IN ACCORDANCE WITH ITEM 512 - TREATING CONCRETE OF THE ODOT C&MS.

EPOXY-URETHANE SEALER SHALL BE APPLIED TO THE FOLLOWING BRIDGES:

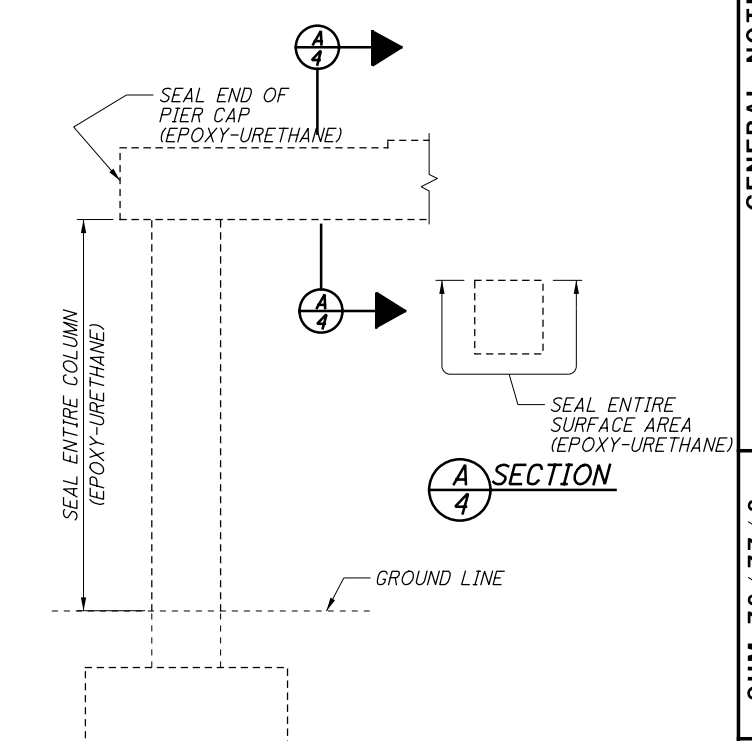
STRUCTURE:	FEDERAL COLOR NO.
SUM-8-0064	27769
SUM-8-0086	13522
SUM-76-1102	13522
SUM-76-1179R	13522
SUM-76-1200	27769



**DETAIL A - SUPERSTRUCTURE SEALING LIMITS**



**DETAIL B - ABUTMENT SEALING LIMITS**



**DETAIL C - PIER SEALING LIMITS**

Released for Construction  
 Thomas J Powell, PE  
 06/21/2021

DESIGN AGENCY: **PRIME**  
 8415 Blue Plains Blvd, Suite 300  
 Columbus, Ohio 43231

DATE: 5/10/21  
 REVIEWED: CCJ  
 STRUCTURE FILE NUMBER: [REDACTED]

DRAWN: KDC  
 KDC  
 REVISIONS: [REDACTED]

DESIGNED: KDC  
 CHECKED: JAT

**GENERAL NOTES (2 OF 3)**  
 BRIDGE NO. SUM-8-0064, SUM-8-0086, SUM-76-1035N, SUM-76-1042N, SUM-76-1043, SUM-76-1044, SUM-76-1048N, SUM-76-1077N, SUM-76-1085, SUM-76-1102, SUM-76-1179R, SUM-76-1200

SUM-76/77/8-  
 8.24/9.74/0.00  
 PID No. 102329

4  
 16

**BRIDGE CLEANING NOTES:**

**WATER QUALITY PROTECTION:**

THIS PROJECT IS SUBJECT TO THE CONDITIONS OF NPDES PERMIT OH2000001. THE CONTRACTOR MUST SUBMIT A NOTICE OF INTENT AS A CO-PERMITTEE UNDER THIS PROJECT AND RECEIVE OEPA APPROVAL TO OPERATE UNDER THE PERMIT PRIOR TO UNDERTAKING ITEM 530 SPECIAL STRUCTURES MISC.: CLEANING BRIDGES. CONTRACTOR MUST COMPLETE THE "WORK PLAN FOR BRIDGE CLEANING" FOR EACH BRIDGE IN ACCORDANCE WITH THE NPDES PERMIT.

**ENVIRONMENTAL COMMITMENTS:**

ALL EQUIPMENT AND MATERIALS MUST BE STAGED ABOVE THE ORDINARY HIGH WATER MARK.

NO IN STREAM WORK IS PERMITTED.

NO TEMPORARY FILL IS PERMITTED BELOW THE ORDINARY HIGH WATER MARK.

**DEBRIS REMOVAL AND DISPOSAL:**

CONTRACTOR SHALL REMOVE AND PROPERLY DISPOSE OF DEBRIS IN ACCORDANCE WITH ALL ENVIRONMENTAL RESTRICTIONS AND PERMITS. DISPOSE ALL THE DEBRIS AS A RESULT OF THE BRIDGE CLEANING OPERATIONS IN ACCORDANCE WITH CMS 105.16. AND OAC 3745-27-05. UNDER NO CIRCUMSTANCES MAY SWEEPINGS BE SWEEPED INTO OPEN DECK DRAINS, OVER THE EDGE OF THE BRIDGE. OR THROWN ALONG THE BANKS, OR INTO THE WATER.

**ITEM 530 SPECIAL STRUCTURES MISC.: CLEANING BRIDGES**

THE WORK SHALL CONSIST OF THE REMOVAL OF DIRT, SAND, SOIL, PAPER, GLASS, CANS, AND OTHER DEBRIS FROM DRAINAGE SYSTEMS, EXPANSION JOINTS, AND ABUTMENT SEATS. EQUIPMENT MAY CONSIST OF HAND TOOLS, MANUAL BROOMS, POWER BROOMS, AIR COMPRESSORS, WATER TANKS, WATER PUMPS WITH ASSOCIATED DELIVERY HARDWARE TO CLEAN, FLUSH, AND REMOVE DIRT AND DEBRIS.

THE CLEANING OF SCUPPERS AND JOINTS SHALL NOT BE PERFORMED PRIOR TO PERFORMING ITEM 530 SPECIAL STRUCTURES MISC.: SWEEPING BRIDGES.

THE CONTRACTOR SHALL SUBMIT TO THE ENGINEER A BRIDGE CLEANING WORK PLAN INDICATING LOCATIONS OF ALL TEMPORARY BMP INSTALLED TO CAPTURE ANY WASH WATER USED IN THE CLEANING PROCESS. THE PLAN SHALL INCLUDE INSPECTION AND DOCUMENTATION OF BMP PERFORMANCE PRIOR TO WORK AND IMMEDIATELY FOLLOWING THE WORK. INTERMEDIATE INSPECTION SHALL BE CONDUCTED EVERY 4 HOUR UNTIL WORK IS COMPLETED.

CONTRACTOR SHALL FURNISH ALL MATERIAL, EQUIPMENT, LABOR AND INCIDENTAL ITEMS NECESSARY TO PROPERLY REMOVE AND DISPOSE OF ALL DEBRIS AND OTHER FOREIGN MATERIAL BY POWER SWEEPING, SHOVELING, SCRAPING, ETC. FOLLOWED BY INSTALLING BMPs AS IDENTIFIED IN THE WORK PLAN FOR BRIDGE CLEANING, AND PRESSURE WASHING THE CURB LINES, SHOULDERS, JOINTS, SCUPPERS, DOWNSPOUTS, AND THE BRIDGE SEAT ALONG WITH THE END OF THE BEAMS.

THE FOLLOWING AREAS OF THE BRIDGE ARE TO BE CLEANED:

**1. CLEANING JOINTS FOR THE FULL WIDTH OF THE BRIDGE:**

- A) PREVENT ALL DIRT, DEBRIS, AND WASHWATER FROM ENTERING ANY DRAINAGE SYSTEM DURING THE CLEANING OPERATIONS.
- B) REMOVE AND COLLECT LOOSE DEBRIS FROM THE JOINTS PRIOR TO INTRODUCING WATER. CARE SHOULD BE TAKEN WHEN BREAKING UP DEBRIS IN THE JOINTS IN ORDER NOT TO DAMAGE THE ELASTOMERIC SEAL.
- C) SWEEP AND COLLECT SAND, DEBRIS AND SEDIMENT BY USE PRESSURE WASHING THE JOINTS OR COMPRESSED AIR.

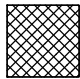
**2. CLEANING SCUPPERS AND DOWNSPOUTS:**

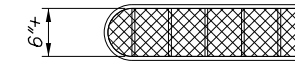
- A) USE SHOVEL, HAND SCRAPERS, AND OTHER HAND TOOLS TO BREAK UP DEBRIS IN SCUPPERS TO THE MAXIMUM EXTENT PRACTICABLE. COLLECT LOOSE AND LARGE DEBRIS FROM THE SCUPPERS PRIOR TO INTRODUCING WATER.
- B) PRESSURE WASH THE SCUPPERS AND DOWNSPOUTS FOR FINAL CLEANING.
- C) ALL DIRT OR DEBRIS FROM THE CLEANING OPERATION SHALL BE REMOVED.

**3. BRIDGE SEATS:**

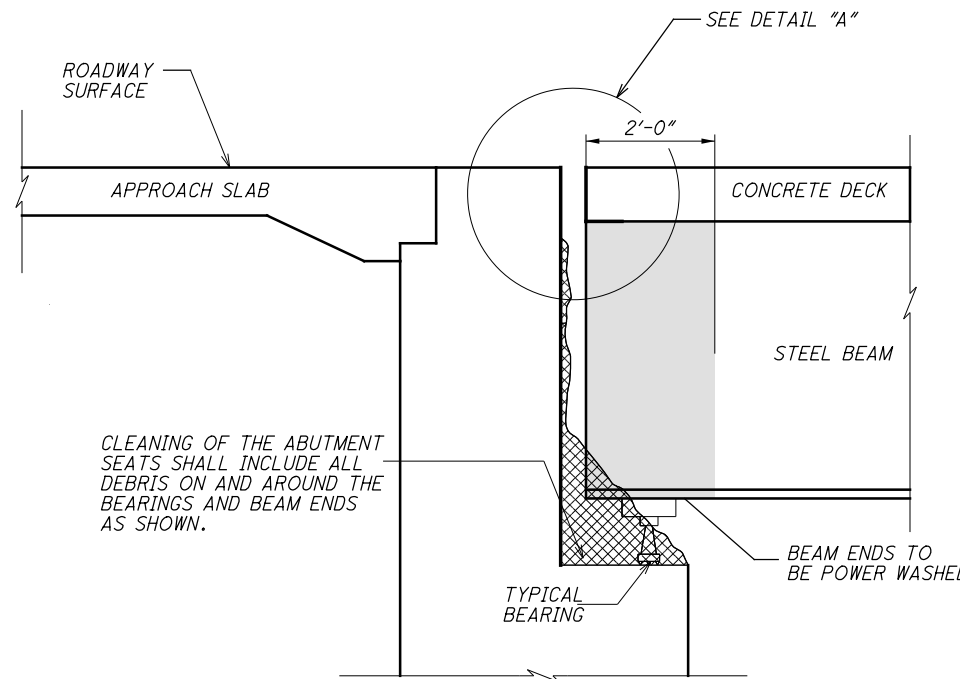
- A) REMOVE WITH A SHOVEL, BROOM, HAND SCRAPER OR OTHER MECHANICAL MEANS, ALL GROSS SOLIDS FROM THE ENTIRE BEAM SEATS AND AROUND ALL AREAS SURROUNDING THE BEAM BEARINGS, TO THE MAXIMUM EXTENT PRACTICABLE PRIOR TO INTRODUCING WATERS.
- B) AFTER REMOVING ALL GROSS SOLIDS PRESSURE WASH THE ABUTMENTS, BACKWALLS, BEAM SEATS AND THE END OF THE BEAMS AS SHOWN ON THE PLANS.

**LEGEND:**

 REMOVE DEBRIS AND OTHER FOREIGN MATERIALS, THEN PRESSURE WASH WITH POTABLE WATER AS DESCRIBED IN THE GENERAL NOTES.

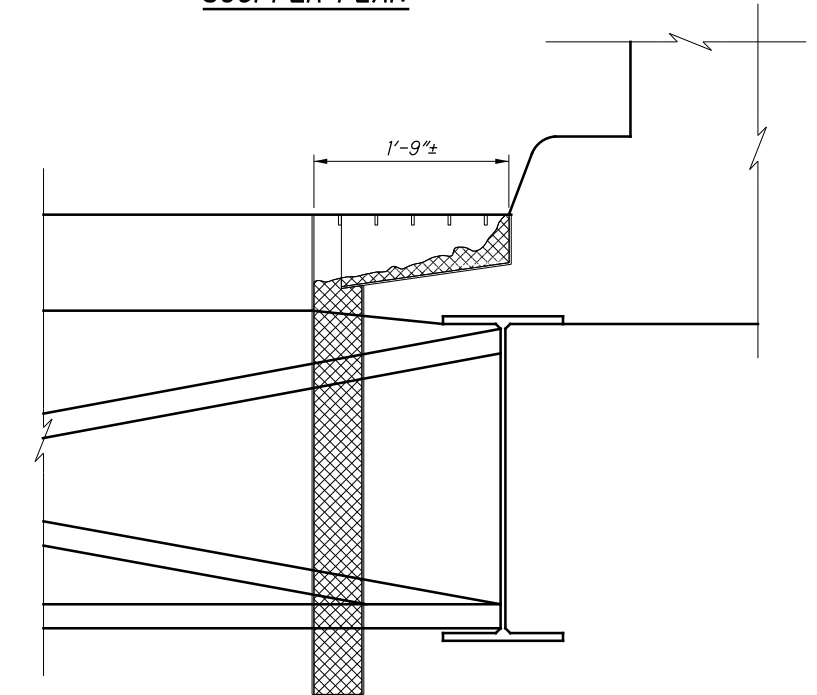


**SCUPPER PLAN**

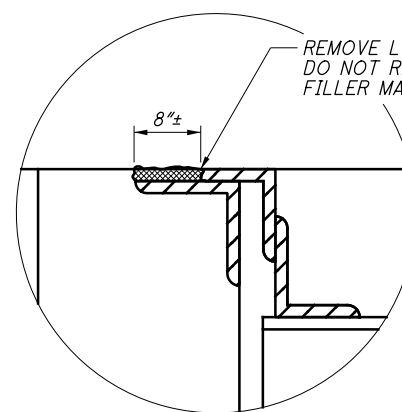


**TYPICAL ABUTMENT DETAIL**

BACKWALL, ABUTMENT SEAT, BEAM ENDS AND EXPANSION JOINT

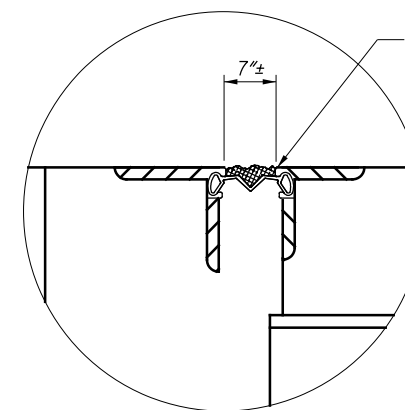


**SCUPPER AND DOWNSPOUTS SIDE VIEW**



**DETAIL "A"**

(SLIDING PLATE)



**DETAIL "A"**

(STRIP SEAL)

AVOID PUNCTURE OR DAMAGE TO SEAL WHILE CLEANING

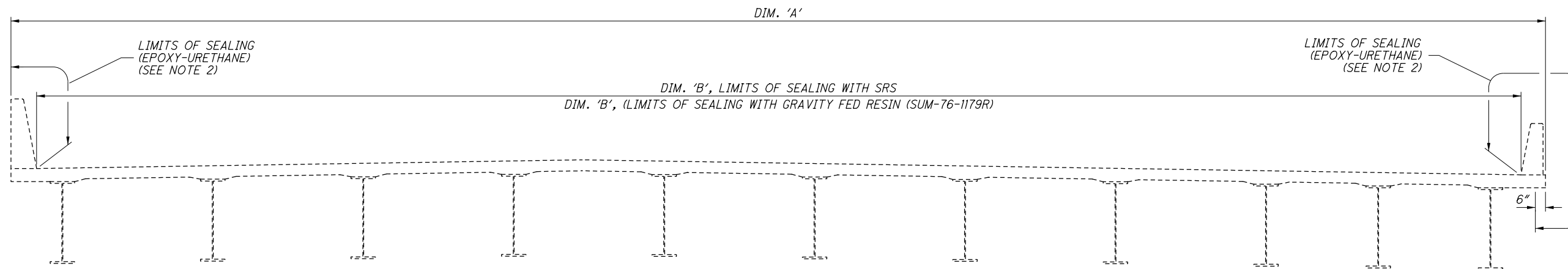
**NOTE:**

- 1. BRIDGE CLEANING TO BE PERFORMED AT THE FOLLOWING BRIDGES:

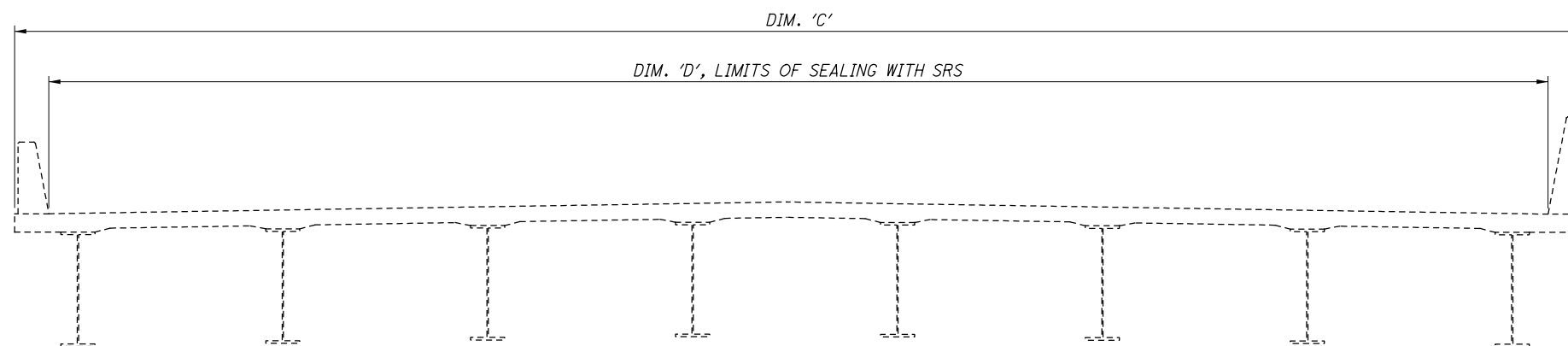
SUM-76-1102  
 SUM-76-1200

pw:\VANVA01PWINT01.pars.com:Ohio State\Documents\B-Akron Beltway Rehab\10 - Design\102329\Structures\BU-14\Sheets\008\_0064\_GN003.dgn Sheet 6/16/2021 3:59:30 PM KChrisman

ISSUE RECORD:	NO.	DATE	DESCRIPTION



**EASTBOUND TRANSVERSE SECTION**  
 (SUM-76-1035N SHOWN, OTHERS SIMILAR)



**WESTBOUND TRANSVERSE SECTION**  
 (SUM-76-1035N SHOWN, OTHERS SIMILAR)

BRIDGE	DIM. 'A'	DIM. 'B'	DIM. 'C'	DIM. 'D'	BRIDGE LIMITS ALONG Q CONST.	APPROACH SLAB LENGTH (PER SIDE)
SUM-76-1035N	VARIABLES, 104'-6 <sup>3</sup> / <sub>8</sub> " ± TO 110'-0 <sup>1</sup> / <sub>8</sub> " ±	VARIABLES, 101'-1 <sup>3</sup> / <sub>8</sub> " ± TO 106'-7 <sup>1</sup> / <sub>8</sub> " ±	76'-7" ±	73'-2" ±	166'-4" ±	---
SUM-76-1042N	VARIABLES, 85'-1 <sup>1</sup> / <sub>4</sub> " ± TO 88'-8 <sup>1</sup> / <sub>8</sub> " ±	VARIABLES, 81'-8 <sup>1</sup> / <sub>4</sub> " ± TO 85'-3 <sup>1</sup> / <sub>8</sub> " ±	76'-7" ±	73'-2" ±	215'-5 <sup>1</sup> / <sub>4</sub> " ±	---
SUM-76-1043	33'-4" ±	30'-0" ±	---	---	247'-1 <sup>1</sup> / <sub>4</sub> " ±	---
SUM-76-1044	45'-4" ±	42'-0" ±	---	---	209'-9 <sup>1</sup> / <sub>4</sub> " ±	---
SUM-76-1048N	55'-7" ±	52'-3" ±	---	---	330'-3 <sup>1</sup> / <sub>2</sub> " ±	---
SUM-76-1077N	51'-0" ±	37'-0" ±*	---	---	261'-0 <sup>1</sup> / <sub>2</sub> " ±	---
SUM-76-1085	51'-0" ±	37'-0" ±*	---	---	185'-7" ±	---
SUM-76-1179R	68'-5" ±	65'-5" ±	---	---	62'-5 <sup>1</sup> / <sub>4</sub> " ±	15'-0" ±

\* - INDICATES TOE/TOE CURB

**NOTES:**

- FOR ADDITIONAL NOTES, SEE SHEET 3/16 THRU 5/16.
- THE FOLLOWING BRIDGES REQUIRES SEALING OF CONCRETE SURFACES:

SUM-8-0064  
 SUM-8-0086  
 SUM-76-1102  
 SUM-76-1179R  
 SUM-76-1200

ISSUE RECORD NO.	DATE	DESCRIPTION

pw:\VANVA01PWINT01.parsons.com:Ohio State\Documents\DB-Akron Beltway Rehab\10 - Design\102329\Structures\BU-14\Sheets\076\_1035N\_TS001.dgn Sheet 6/16/2021 3:59:36 PM KChrisman

DESIGN AGENCY: PRIME  
 8415 Atlas Plaza  
 Columbus, Ohio 43231

DESIGNED: JAT  
 CHECKED: KDC

DRAWN: JAT  
 REVISED: (blank)

REVIEWED: CCJ  
 STRUCTURE FILE NUMBER: (blank)

DATE: 5/10/21

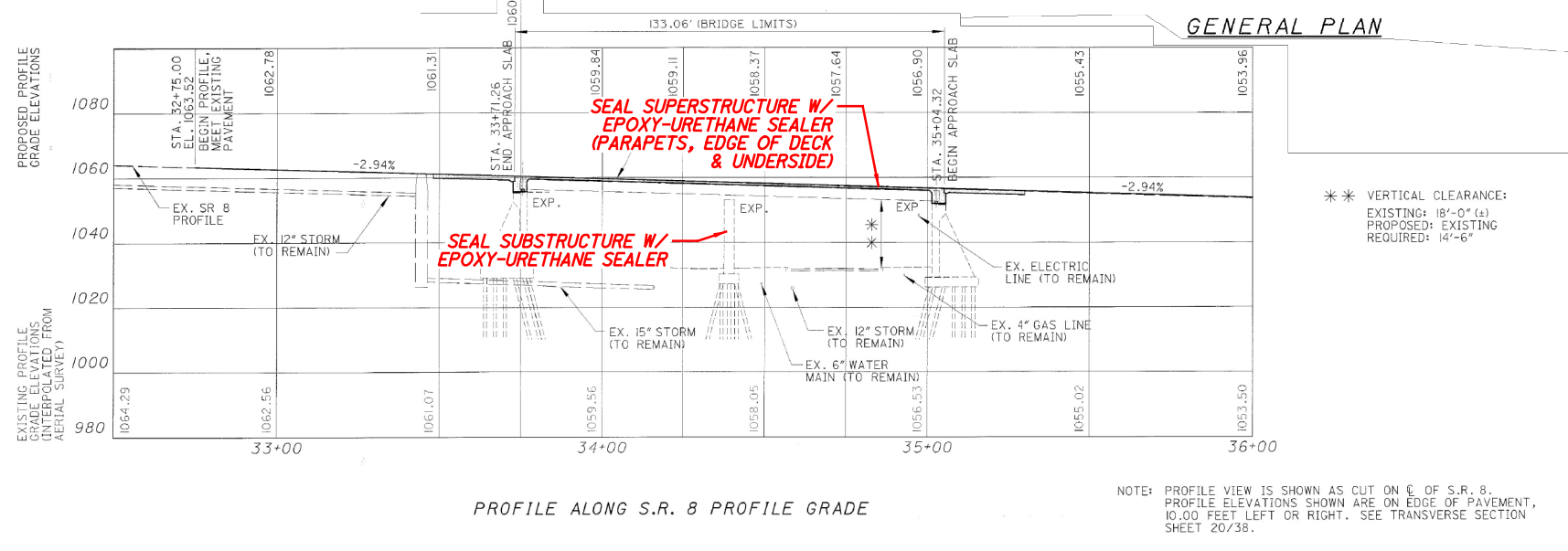
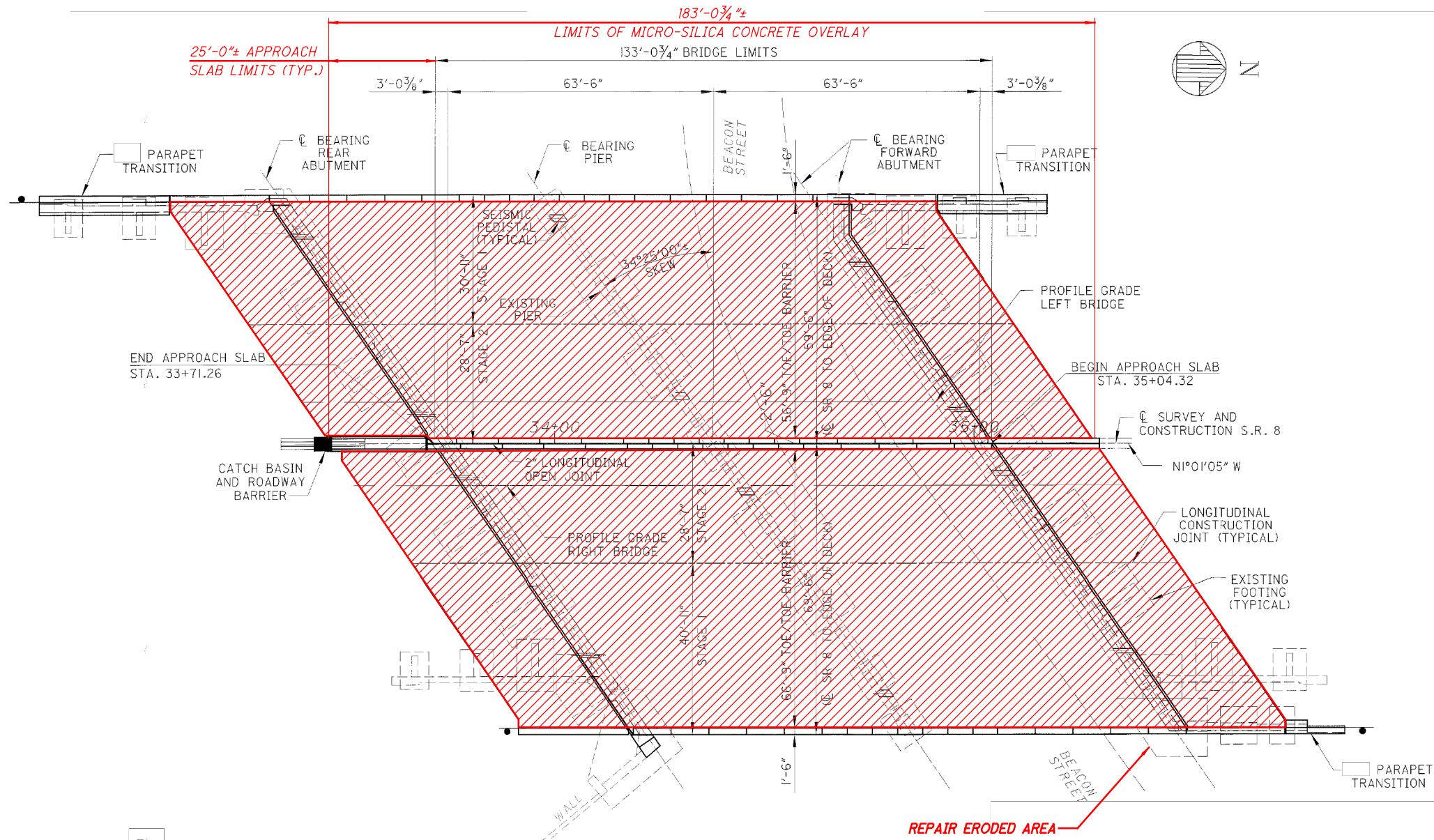
**TRANSVERSE SECTION**  
 BRIDGE NO. SUM-76-1035N, SUM-76-1042N, SUM-76-1043, SUM-76-1044, SUM-76-1048N, SUM-76-1077N, SUM-76-1085, SUM-76-1179R

SUM-76-77/8-8.24/9.74/0.00  
 PID No. 102329

0  
 16

pw:\VANVAOIPWINTO\parsons.com\Ohio State\Documents\DB-Akron Beltway Rehab\10 - Design\102329 Structures\BU-14\Sheets\008\_0064.dgn Sheet 6/16/2021 3:59:42 PM KChrisman

ISSUE RECORD	NO.	DATE	DESCRIPTION



- NOTES:**
- FOR GENERAL NOTES, SEE SHEETS **3/16** TRHU **5/16**.
  - FOR TRANSVERSE SECTION, SEE SHEET **2/2**.

**EXISTING STRUCTURE**

TYPE: CONTINUOUS STEEL BEAM WITH COMPOSITE CONCRETE DECK AND REINFORCED CONCRETE SUBSTRUCTURE

SPANS: 2 @ 63'-6" C/C BEARINGS

ROADWAY: 56'-9" TOE/TOE BARRIER (LEFT)  
 59'-5" OUT/OUT DECK (LEFT)  
 66'-9" TOE/TOE BARRIER (RIGHT)  
 69'-5" OUT/OUT DECK (RIGHT)

LOADING: HS 20-44 (CASE I) AND THE ALTERNATE MILITARY LOADING

WEARING SURFACE: MONOLITHIC CONCRETE

SKEW: 34°25'± RIGHT FORWARD

APPROACH SLABS: 25'-0"± LONG (AS-1-81)

ALIGNMENT: TANGENT

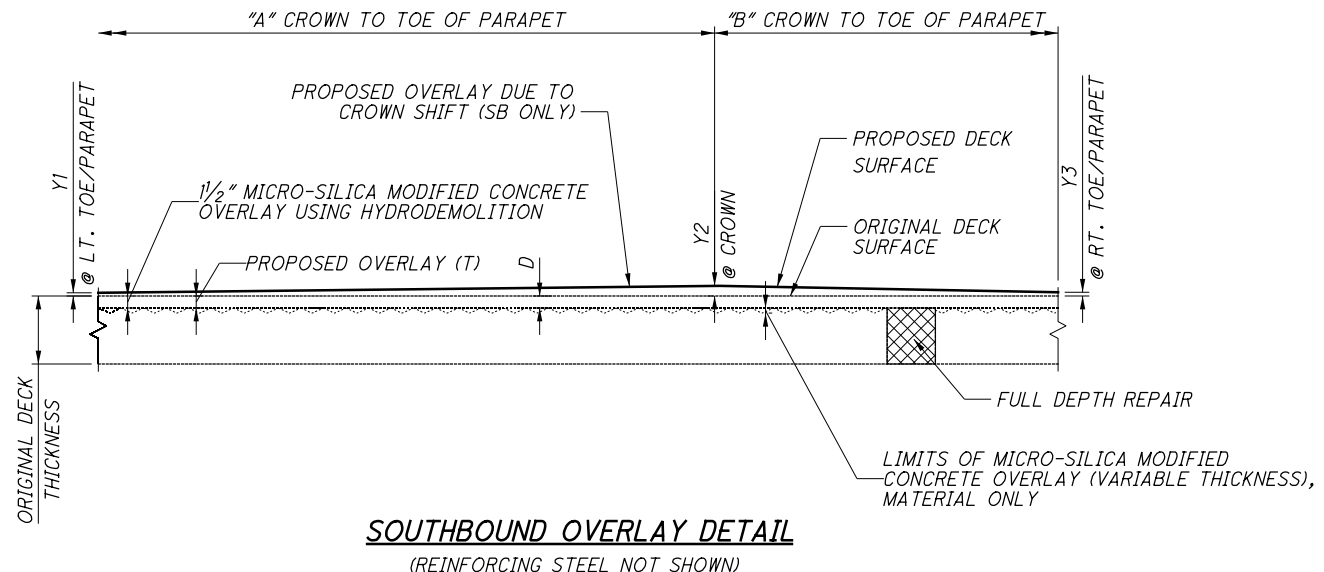
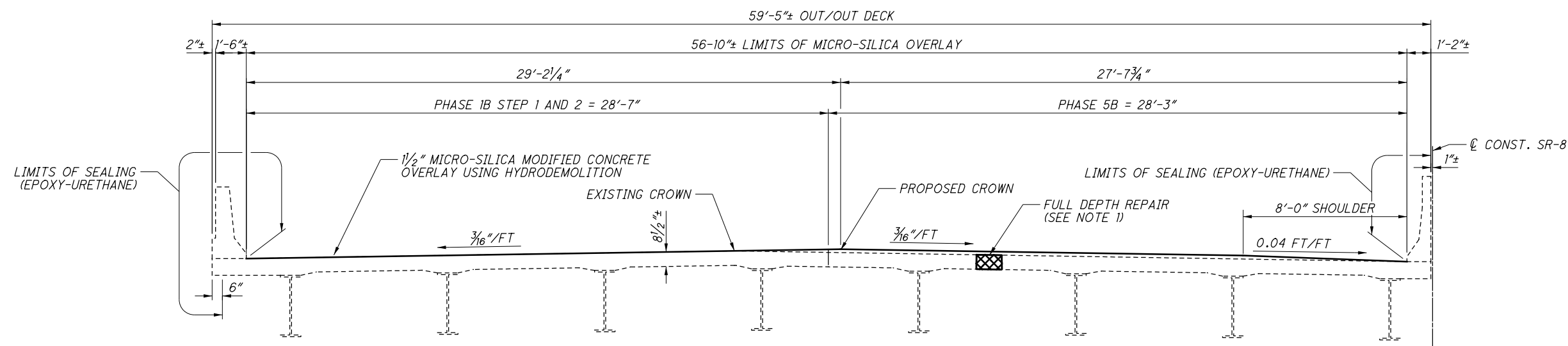
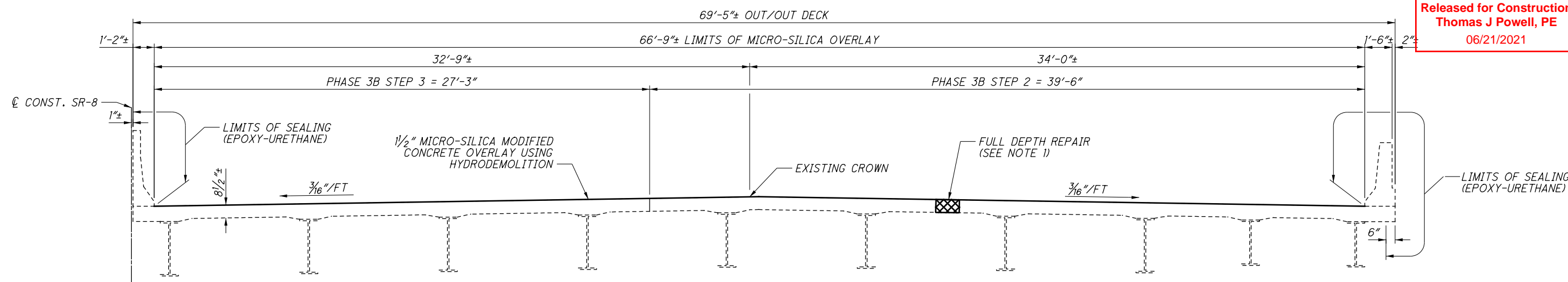
CROWN: 3/16"± / FT.

COORDINATES: LATITUDE 41°05'00"± N  
 LONGITUDE 81°30'12"± W

**ORIGINAL CONSTRUCTION PLANS SHOWN FOR INFORMATION ONLY**

**LEGEND:**

- LIMITS OF MICRO-SILICA CONCRETE OVERLAY



LOCATION	OVERLAY THICKNESS			WIDTH		REMOVAL DEPTH
	Y1	Y2	Y3	A	B	D
SUM-8-0064 (SB)	0"±	2"±	0"±	29'-2 1/4"±	27'-7 3/4"±	1 1/2"

DIMENSIONS Y1, Y2 & Y3 ARE MEASURED FROM THE TOP OF THE UNIFORM OVERLAY FROM HYDRODEMOLITION TO THE PROPOSED DECK SURFACE REQUIRED TO SHIFT CROWN.

**LEGEND:**  
 - LIMITS OF FULL DEPTH REPAIR

**NOTES:**  
 1. PERFORM FULL DEPTH REPAIR OF THE DECK AT AREAS DESIGNATED BY THE ENGINEER. FOR ADDITIONAL NOTES, SEE SHEET 4/16.

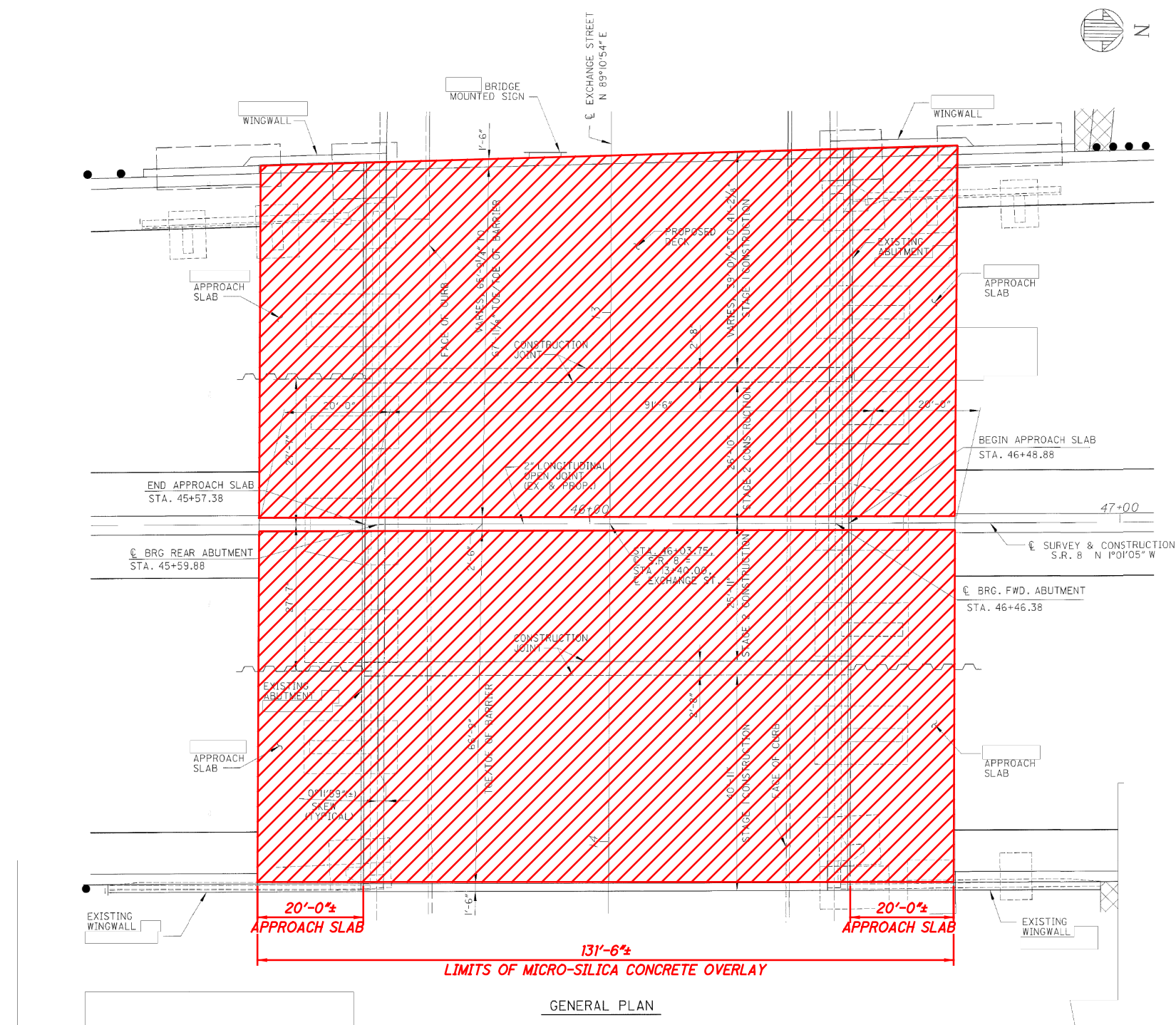
ISSUE RECORD NO.	DATE	DESCRIPTION

pw:\V\ANVA01PWINT01.parsons.com:Ohio State\Documents\DB-Akron Beltway Rehab\10 - Design\102329\Structures\BU-14\Sheets\008\_0064 - TS001.dgn Sheet 6/16/2021 3:59:57 PM KChrisman



ISSUE RECORD NO.	DATE	DESCRIPTION

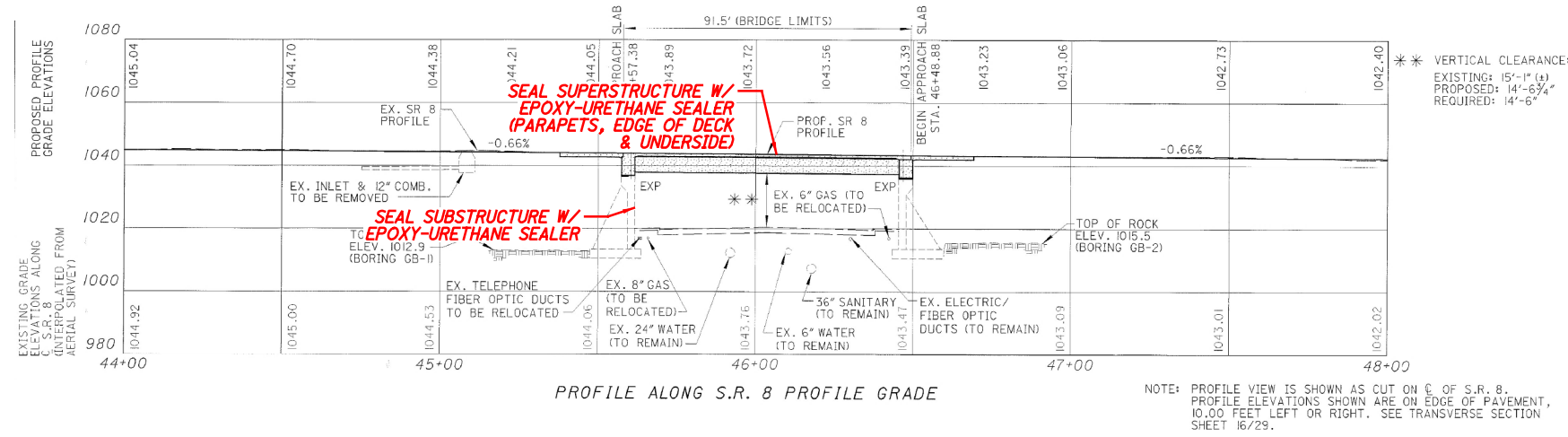
pw:\VANVOIPWINTO\parsons.com:Ohio State\Documents\DB-Akron Beltway Rehab\10 - Design\102329\Structures\BU-14\Sheets\008\_0086.dgn Sheet 6/16/2021 4:00:04 PM KChrisman



**LEGEND:**  
 - LIMITS OF MICRO-SILICA CONCRETE OVERLAY

- NOTES:**
- FOR GENERAL NOTES, SEE SHEETS [3/16](#) TRHU [5/16](#).
  - FOR TRANSVERSE SECTION, SEE SHEET [2/2](#).

ORIGINAL CONSTRUCTION  
 PLANS SHOWN FOR  
 INFORMATION ONLY



**EXISTING STRUCTURE**

TYPE: SINGLE SPAN NON-COMPOSITE STEEL GIRDER WITH REINFORCED CONCRETE DECK AND SUBSTRUCTURE

SPANS: 86'-6"± C/C BEARINGS

ROADWAY: VARIES FROM 65'-9 1/4"± TOE/TOE BARRIER AT REAR ABUTMENT (LEFT) TO 67'-11 1/8"± TOE/TOE BARRIER AT FORWARD ABUTMENT (LEFT) 66'-9"± TOE/TOE BARRIER (RIGHT)

LOADING: HS 20-44 (CASE I) AND THE ALTERNATE MILITARY LOADING

WEARING SURFACE: MONOLITHIC CONCRETE

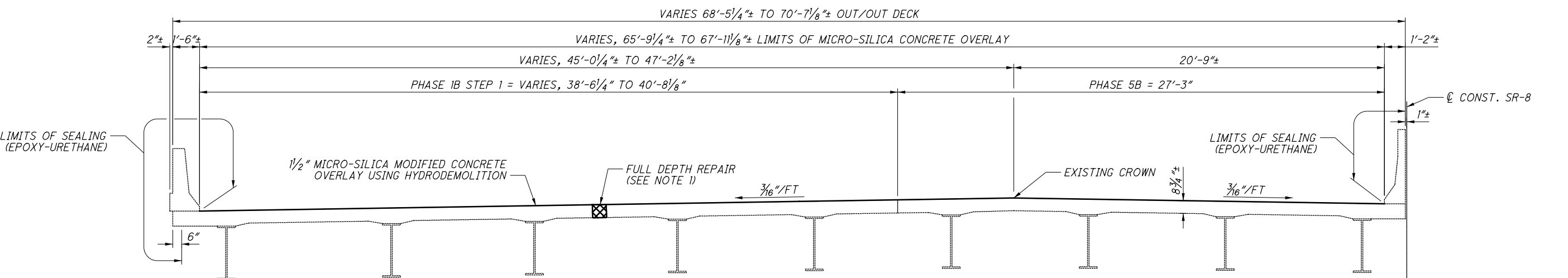
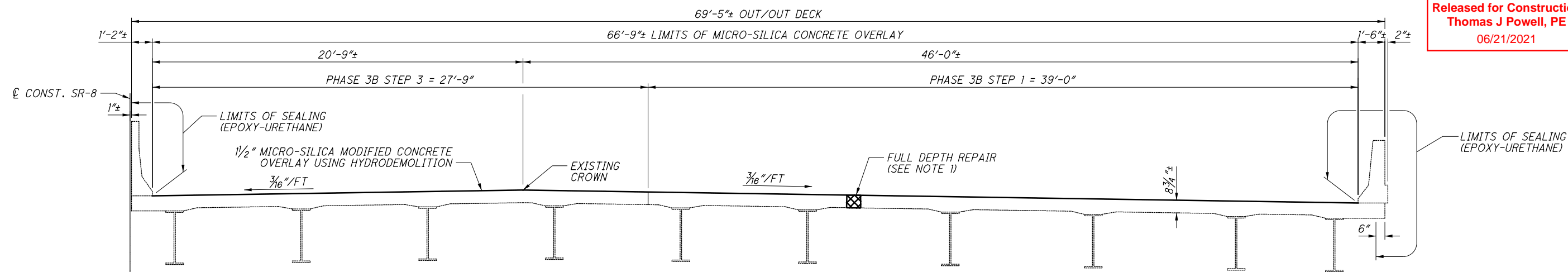
SKEW: 0°11'59"± LEFT FORWARD

APPROACH SLABS: 20'-0"± LONG (AS-1-81)

ALIGNMENT: TANGENT

CROWN: 3/16"± / FT.

COORDINATES: LATITUDE 41°04'18"± N  
 LONGITUDE 81°30'18"± W



**LEGEND:**

☒ - LIMITS OF FULL DEPTH REPAIR

**NOTES:**

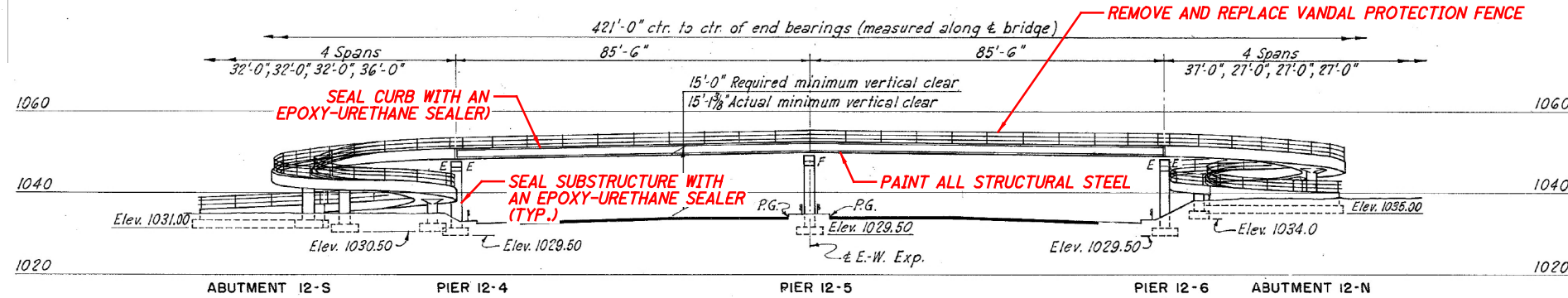
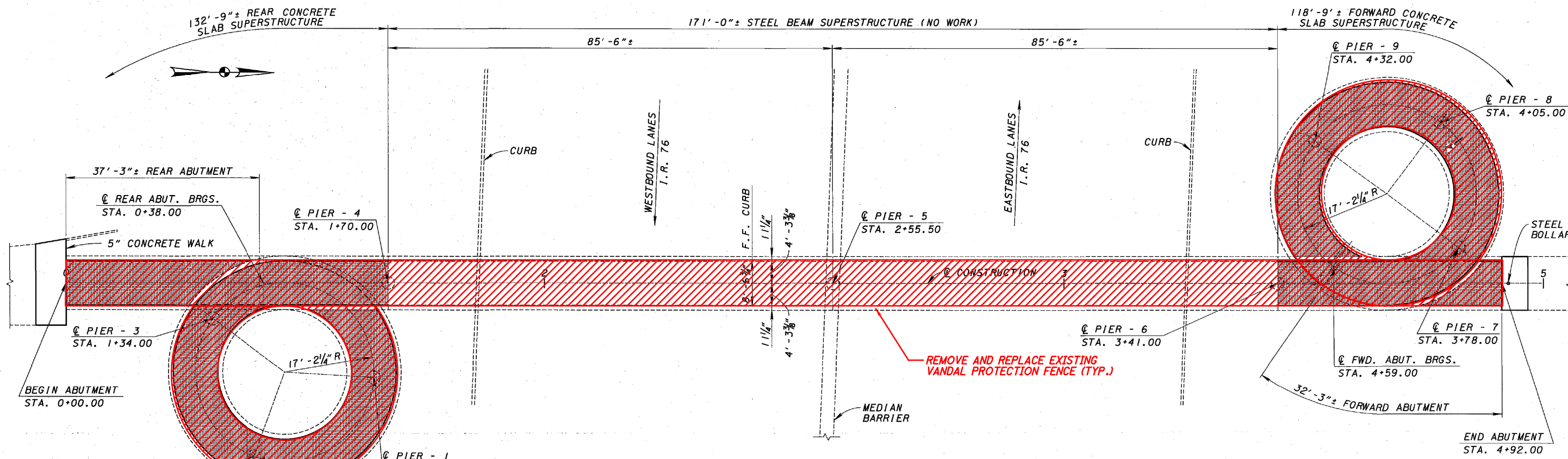
- PERFORM FULL DEPTH REPAIR OF THE DECK AT AREAS DESIGNATED BY THE ENGINEER. FOR ADDITIONAL NOTES, SEE SHEET 4/16.

ISSUE RECORD NO.	DATE	DESCRIPTION

p:\V\ANVA01PWINT01.parsons.com:Ohio State\Documents\DB-Akron Beltway Rehab\10 - Design\102329\Structures\BU-14\Sheets\008\_0086\_15001.dgn Sheet 6/16/2021 4:00:19 PM kChrisman

pw:\VANVAIPWINTO\parsons.com\Ohio State\Documents\010 State\Rehab\10 - Design\102329 Structures\BU-14\Sheets\076\_102\_GP001.dgn Sheet 6/16/2021 4:00:24 PM KChrisman

DESIGN AGENCY: PRIME CONSULTANTS, INC. 8415 Blue Hills Drive Columbus, Ohio 43231  
 DATE: 5/10/21  
 REVIEWED: CCJ  
 DRAWN: KDC  
 CHECKED: JAT  
 STRUCTURE FILE NUMBER: 7705891  
 SUMMIT COUNTY STA. 0+00.00+ STA. 4+92.00+  
 GENERAL PLAN BRIDGE NO. SUM-76-1102 SUMNER STREET PEDESTRAIN BRIDGE OVER I-76  
 SUM-76/77/8-8.24/9.74/0.00  
 PID No. 102329  
 1/3  
 11/16



**EXISTING STRUCTURE**

TYPE: CONTINUOUS CONCRETE SLAB SPANS AND CONTINUOUS ROLLED BEAM SPANS WITH CONCRETE SUBSTRUCTURE

SPANS: CONCRETE SPANS, 3 @ 32'-0", 36'-0", 37'-0" AND 3 @ 27'-0" = 250'-0"

STEEL BEAM SPANS, 2 @ 85'-6" = 171'-0"

WALKWAY: 8'-0"

ORIGINAL DESIGN LOADING: 85 LB. PER SQ. FT. LIVE LOAD

SKEW: 2° 22' 18"

DATE BUILT: 1960

STRUCTURE FILE NUMBER: 7705891

**LEGEND:**

- LIMITS OF SEALING WITH GRAVITY FED RESIN

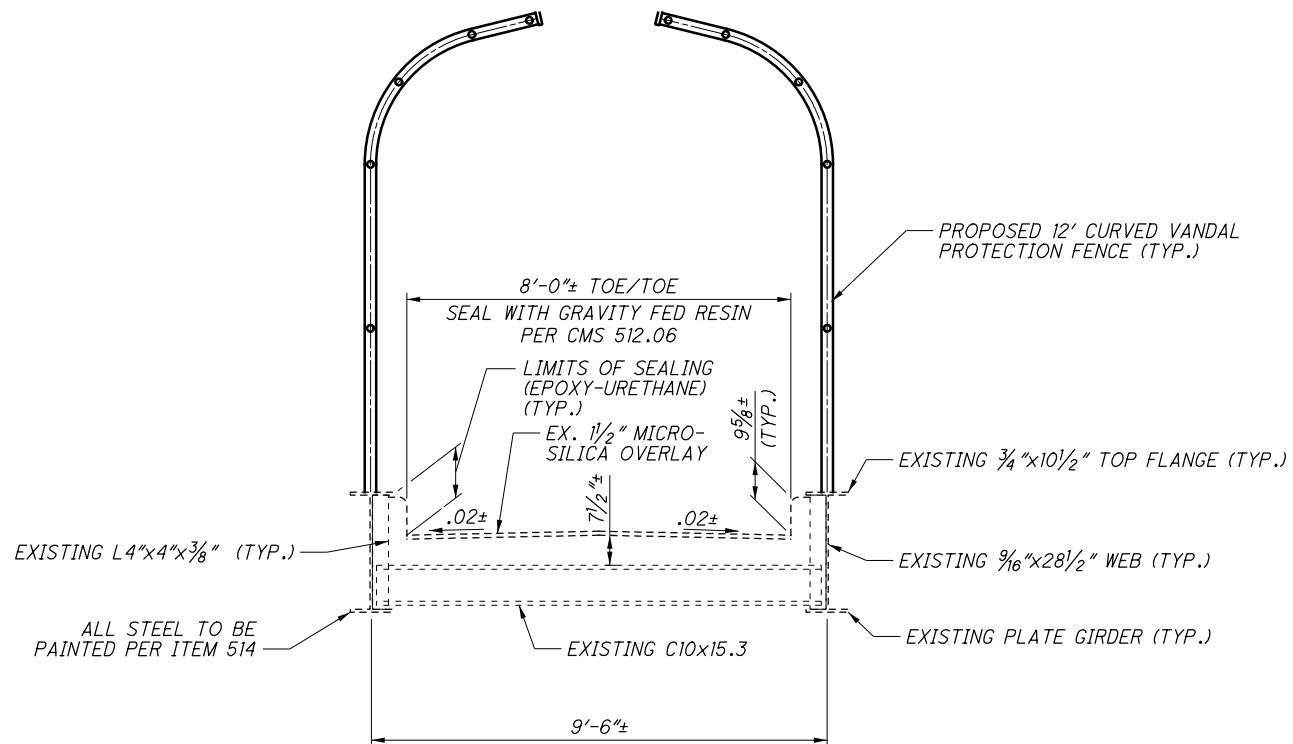
**NOTES:**

1. FOR GENERAL NOTES, SEE SHEETS 3/16 THRU 5/16.

**ORIGINAL CONSTRUCTION PLANS SHOWN FOR INFORMATION ONLY**

p:\V\ANVA01P\W\T01\parsons.com:Ohio\_State\Documents\DB-Akron Beltway Rehab\10 - Design\102329\Structures\BU-14\Sheets\076\_1102\_TS001.dgn Sheet 6/16/2021 4:00:48 PM KChrisman

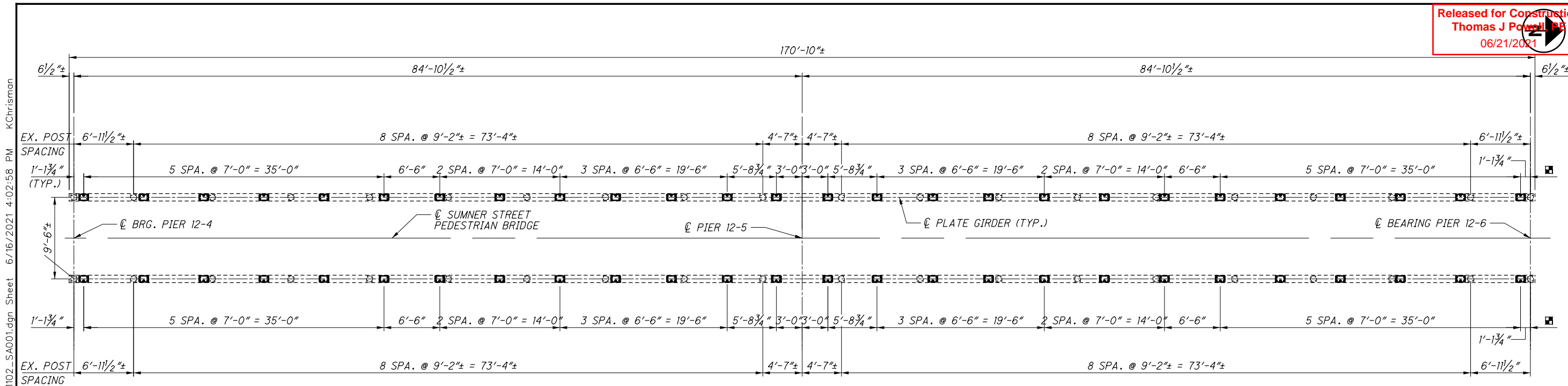
ISSUE RECORD	NO.	DATE	DESCRIPTION



**TRANSVERSE SECTION**  
 LIMITS OF GRAVITY FED RESIN FROM STA. 1+70.00± TO 3+41.00±

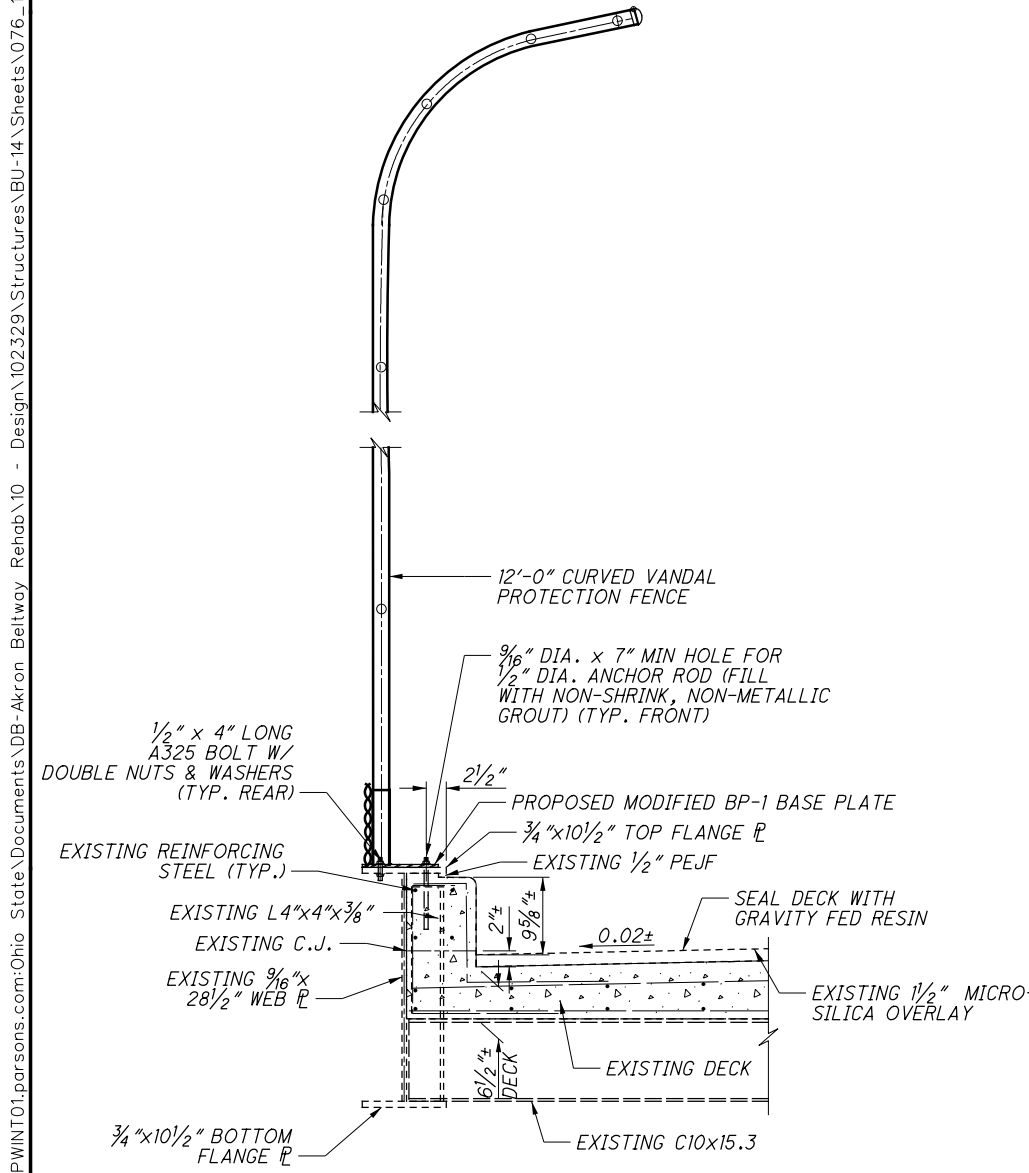
**NOTES:**

- FOR ADDITIONAL NOTES, SEE SHEET 3/16 THRU 5/16.
- FOR VANDAL PROTECTION FENCE DETAILS, SEE SHEET 3/3.

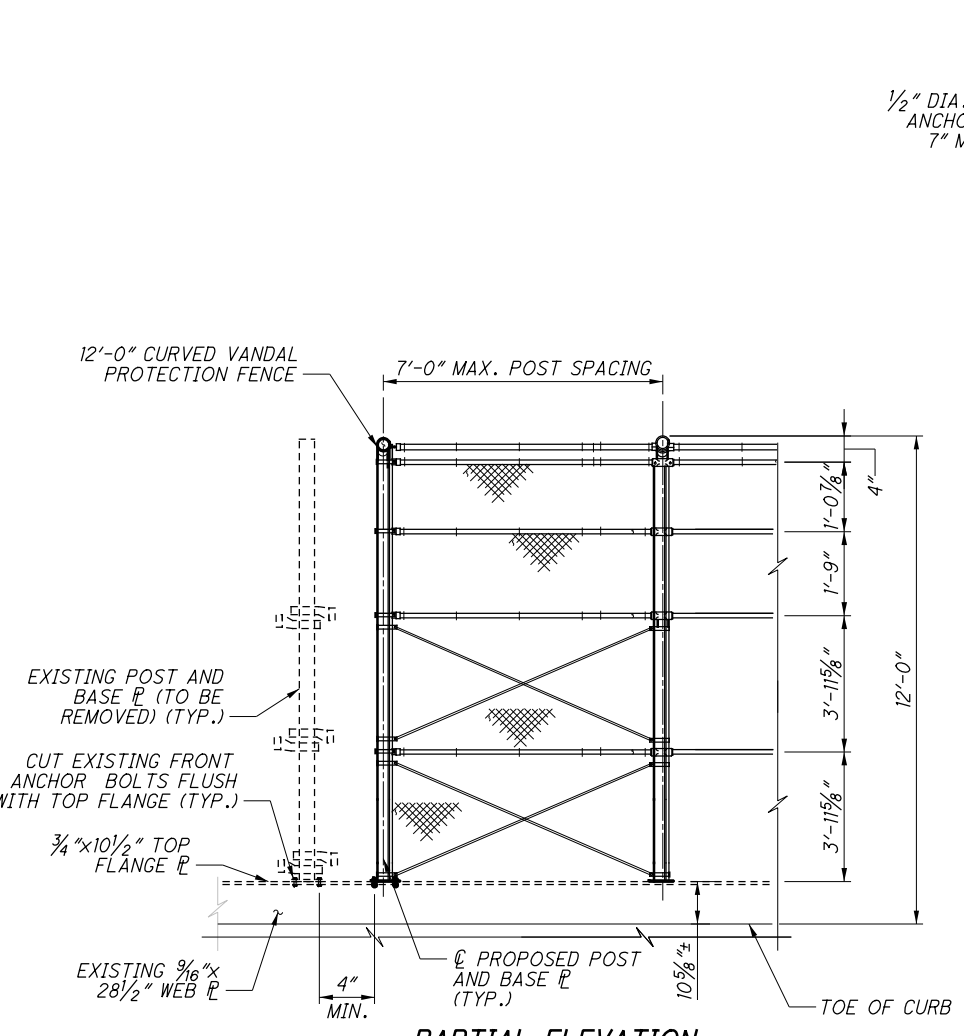


**PLAN**

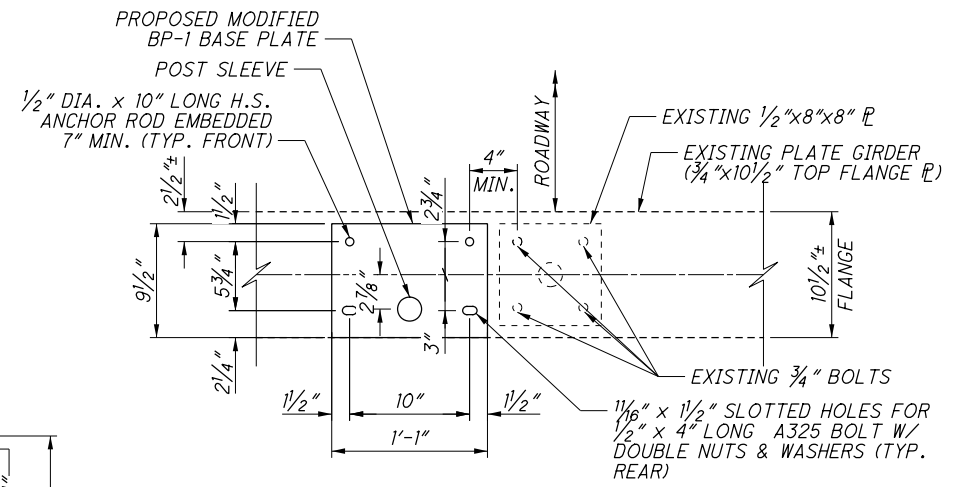
ISSUE RECORD NO.	DATE	DESCRIPTION



**CONNECTION DETAIL**



**PARTIAL ELEVATION**



**BASE PLATE PLAN VIEW**

**LEGEND:**

- - PROPOSED VANDAL PROTECTION FENCE POST SPACING

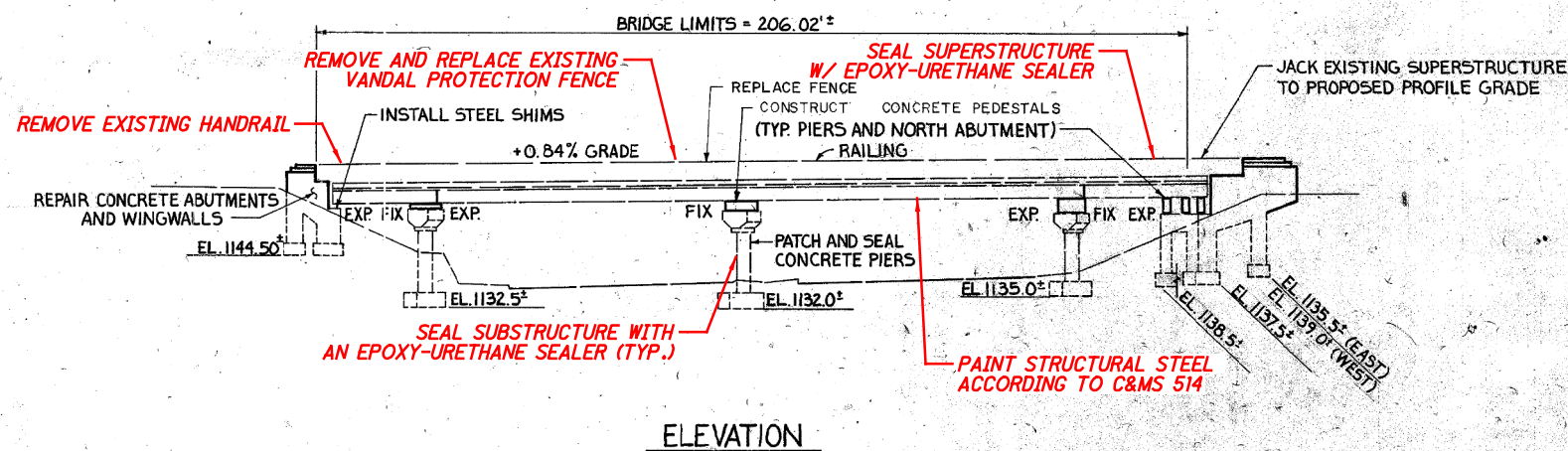
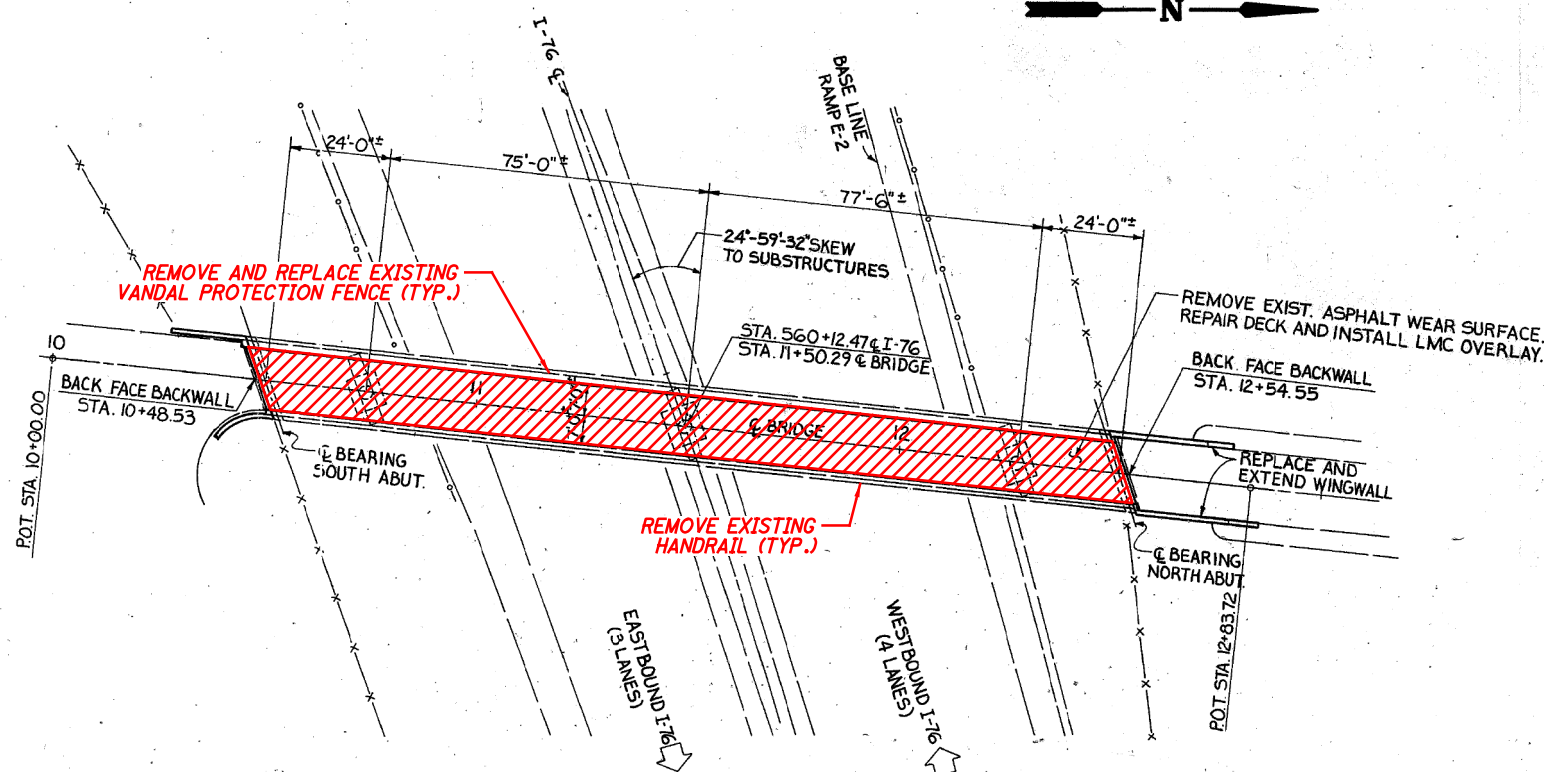
**NOTES:**

- EXISTING POST LOCATIONS TAKEN FROM ORIGINAL PLANS.
- ALL POSTS, FENCE FABRIC, RAILS, POSTS, PLATES, TIE WIRES, NUTS, BOLTS, CAULK AND OTHER VISIBLE HARDWARE SHALL BE COATED BLACK (FEDERAL COLOR NO. 27038).
- FOR ADDITIONAL DETAILS, SEE ODOT STD. DRAWING VPF-1-90.

F.H.W.A. REG.	STATE	PROJECT	06/21/2021
5	OHIO		629
			12/14

SUMMIT COUNTY  
SUM-76-11-57

DESIGN AGENCY  
**PRIME**  
8415 Athens Plaza  
Columbus, Ohio 43231



**NOTES:**

1. FOR GENERAL NOTES, SEE SHEETS 3/16 TRHU 5/16.
2. FOR TRANSVERSE SECTION, SEE SHEET 2/3.
3. FOR VANDAL PROTECTION FENCE DETAILS, SEE SHEET 3/3.

**LEGEND:**

- LIMITS OF SEALING WITH GRAVITY FED RESIN

ORIGINAL CONSTRUCTION PLANS SHOWN FOR INFORMATION ONLY

**EXISTING STRUCTURE**

TYPE: SIMPLE END SPANS, CONTINUOUS MIDSPANS, STEEL BEAMS WITH REINFORCED CONCRETE DECK AND SUBSTRUCTURES  
 SPANS: 24'-0"±, 75'-0"±, 77'-6"±, 24'-0"± C/C BEARINGS  
 ROADWAY: 14'-0"± FACE/FACE CURB  
 LOADING: CF 130  
 WEARING SURFACE: 1/4"± LMC OVERLAY  
 SKEW: 24°59'32"± RIGHT FORWARD  
 APPROACH SLABS: NONE  
 ALIGNMENT: TANGENT  
 SUPERELEVATION: NONE  
 COORDINATES: LATITUDE 41°03'46"± N  
 LONGITUDE 81°29'48"± W

ISSUE RECORD:	NO.	DATE	DESCRIPTION

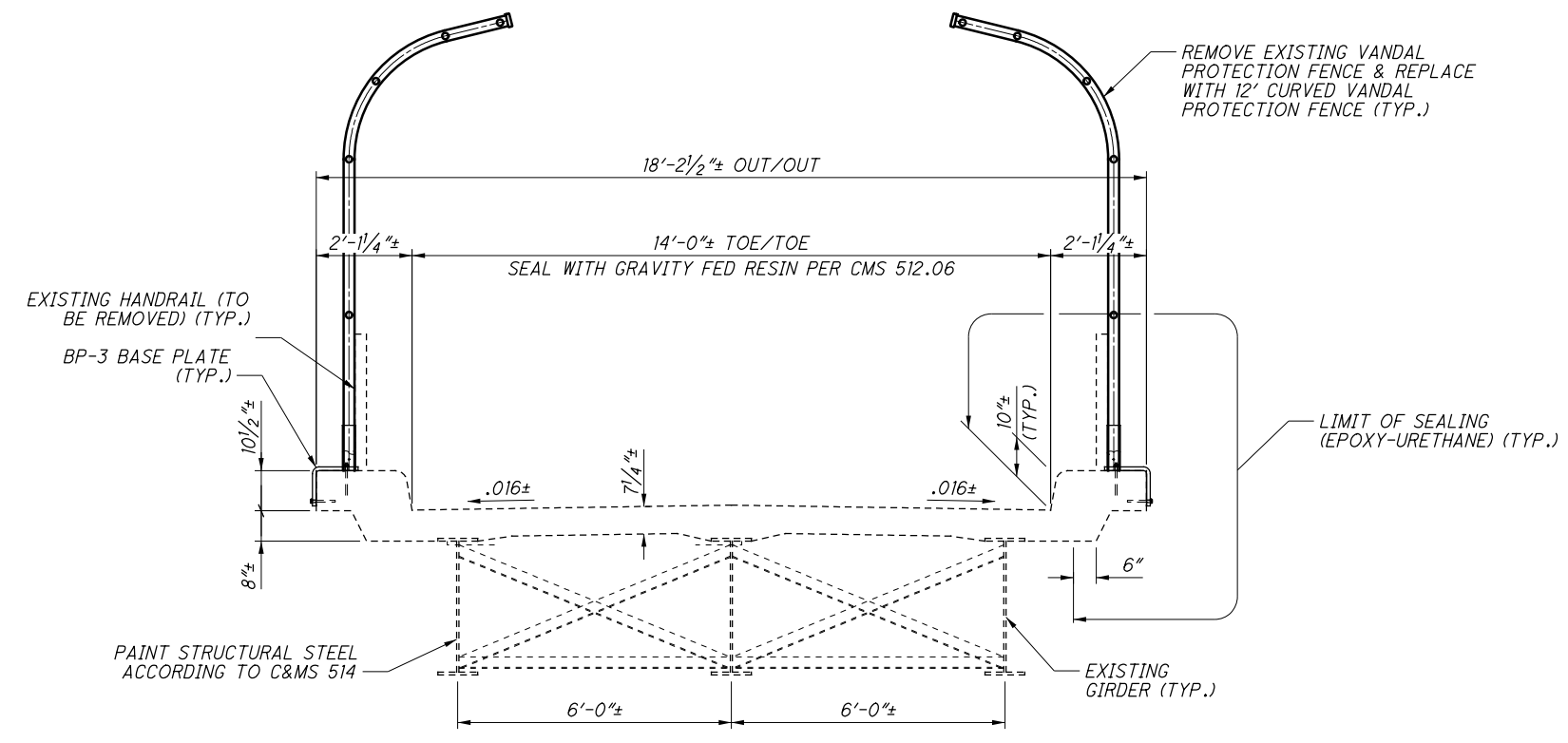
DESIGNED	KDC	CHECKED	JAT
DRAWN	KDC	REVISED	
REVIEWED	CCJ	STRUCTURE FILE NUMBER	7706219
DATE	5/10/21		

GENERAL PLAN	SUMMIT COUNTY
BRIDGE NO. SUM-76-1200	STA. 10+48.53±
HOLY CROSS BLVD. PEDESTIAN BRIDGE OVER I-76	STA. 12+54.55±

SUM-76/77/8-  
8.24/9.74/0.00  
PID No. 102329  
1/3  
14/16

pw:\VANVAOPWINTO\parsons.com:Ohio State\Documents\DB-Akron Beltway Rehab\10 - Design\102329\Structures\BU-14\Sheets\076-1200-CP001.dgn Sheet 6/16/2021 4:00:59 PM KChrisman



**TRANSVERSE SECTION**

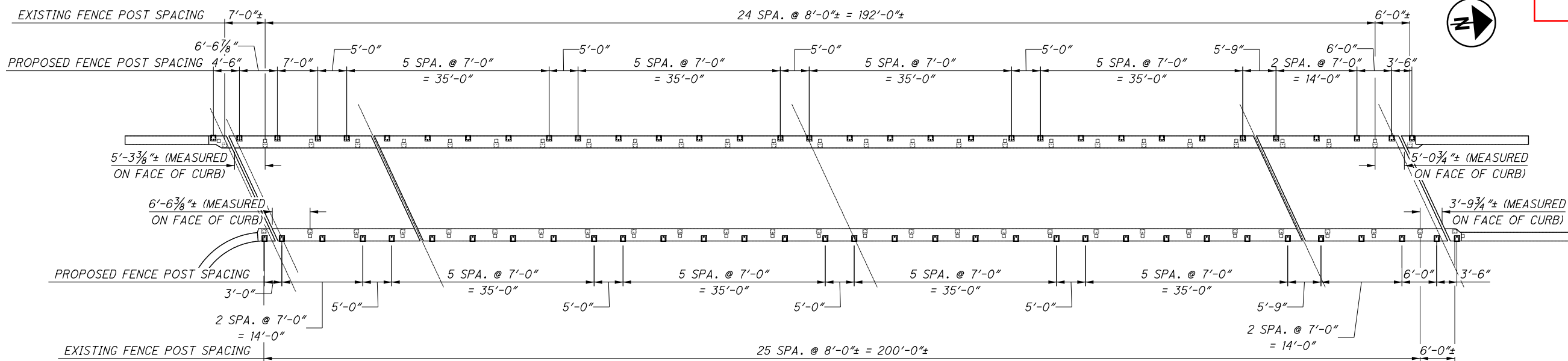
LIMITS OF GRAVITY FED RESIN FROM STA. 10+45.53± TO STA. 12+54.55±

**NOTES:**

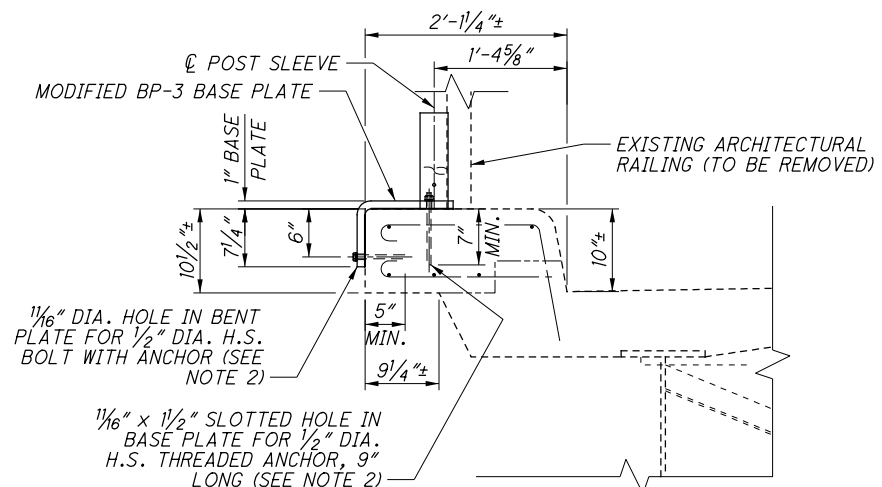
- FOR ADDITIONAL NOTES, SEE SHEET 3/16.
- FOR VANDAL PROTECTION FENCE DETAILS, SEE SHEET 3/3.

ISSUE RECORD NO.	DATE	DESCRIPTION

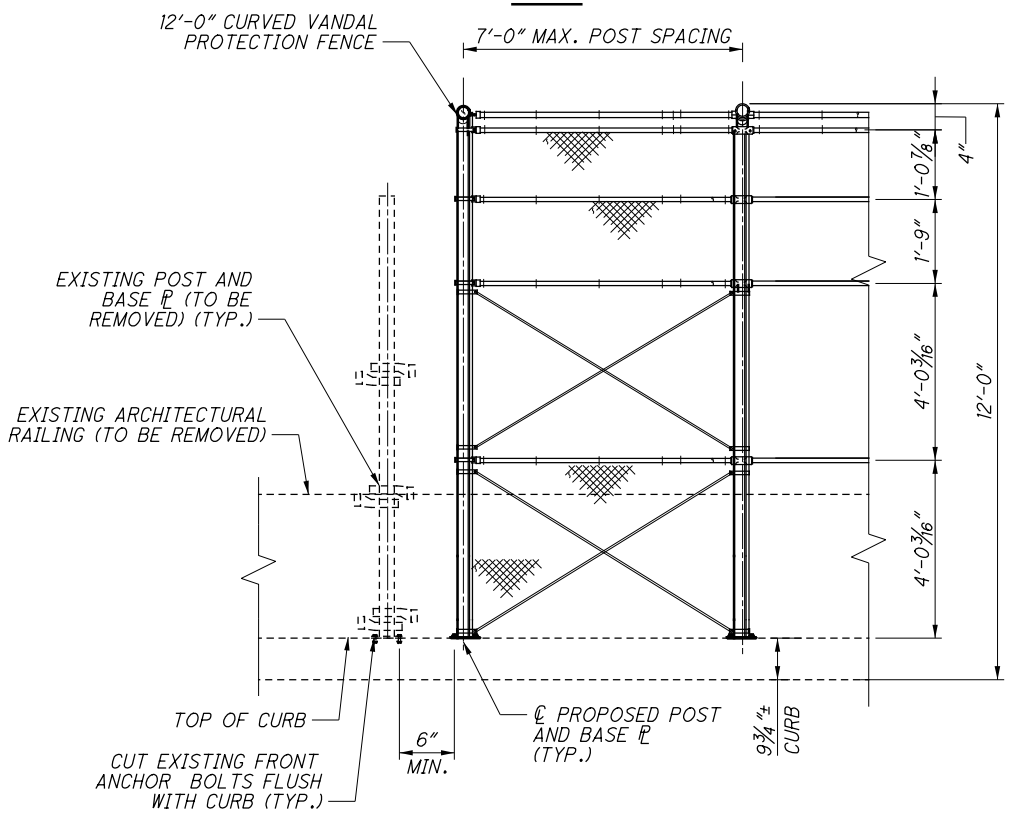
pw:\VANVA01PWINT01.parsons.com:Ohio State\Documents\DB-Akron Beltway Rehab\10 - Design\102329\Structures\BU-14\Sheets\076\_1200\_TS001.dgn Sheet 6/16/2021 4:01:14 PM KChrisman



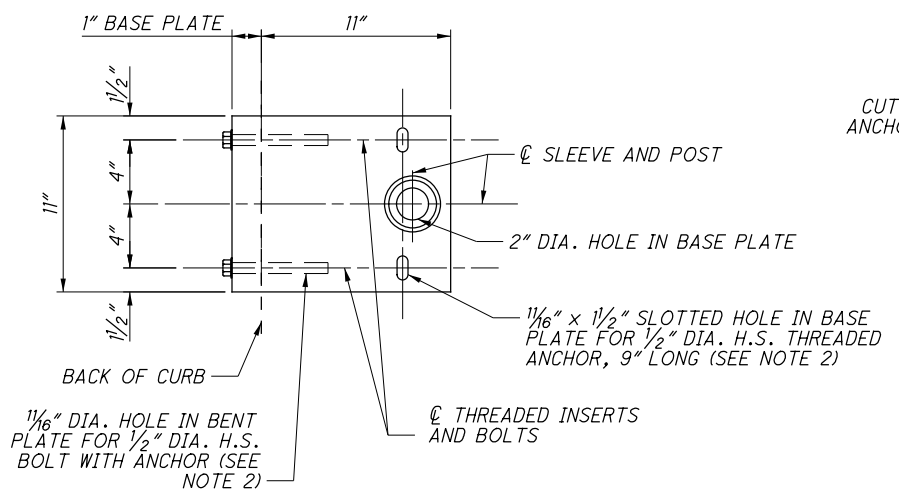
**PLAN**



**CONNECTION DETAIL**



**PARTIAL ELEVATION**



**MODIFIED BP-3 BASE PLATE DETAIL**

**LEGEND:**

\* - EXISTING POST LOCATIONS TAKEN FROM ORIGINAL PLANS.

**NOTES:**

1. ALL POSTS, FENCE FABRIC, RAILS, POSTS, PLATES, TIE WIRES, NUTS, BOLTS, CAULK AND OTHER VISIBLE HARDWARE SHALL BE COATED BLACK (FEDERAL COLOR NO. 27038).
2. FILL DOWEL HOLES WITH NON-SHRINK, NON-METALLIC GROUT.
3. FOR ADDITIONAL DETAILS, SEE ODOT STD. DRAWING VPF-1-90.

ISSUE RECORD NO.	DATE	DESCRIPTION

pw:\VANVA01PWINT01.parsons.com:Ohio State\Documents\DB-Akron Beltway Rehab\10 - Design\102329\Structures\BU-14\Sheets\076\_1200\_SA001A.dgn Sheet 6/16/2021 4:01:20 PM KChrisman