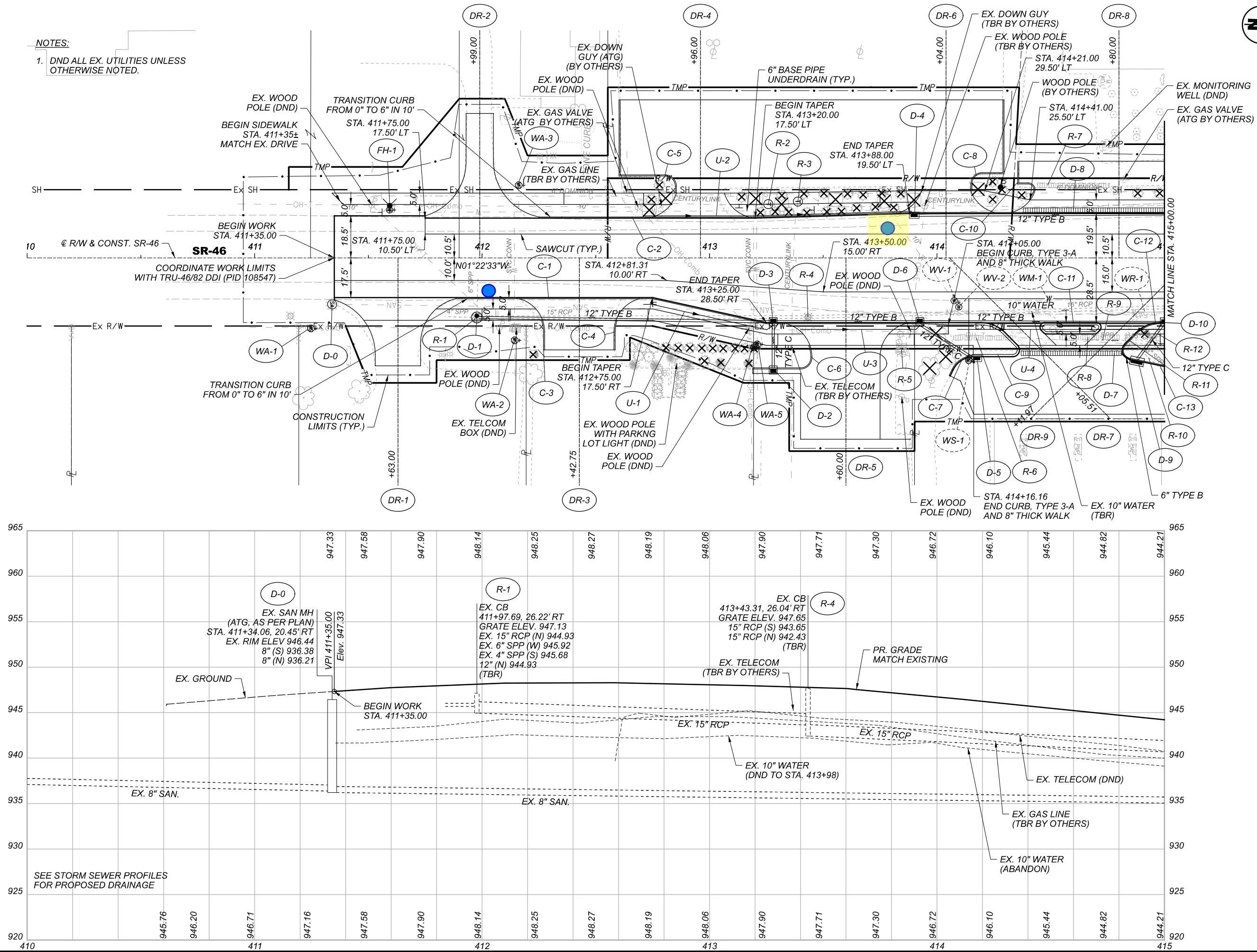
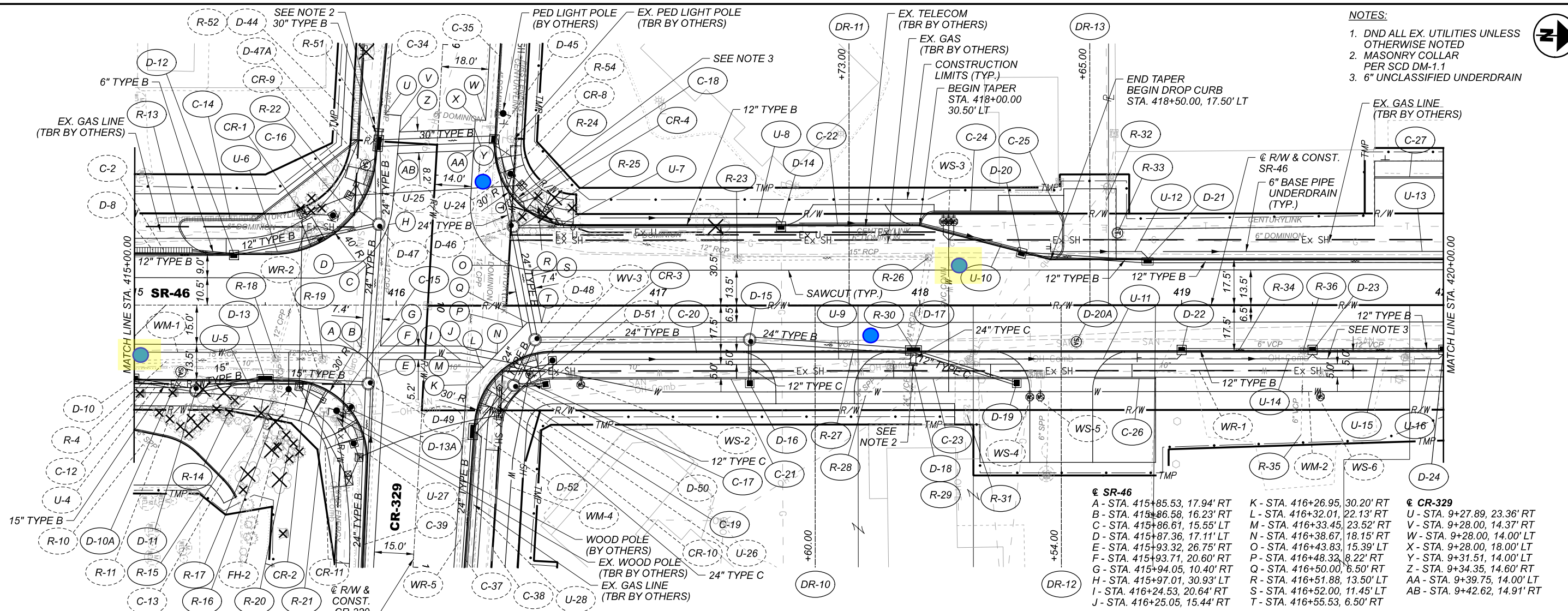


NOTES:  
1. DND ALL EX. UTILITIES UNLESS OTHERWISE NOTED.

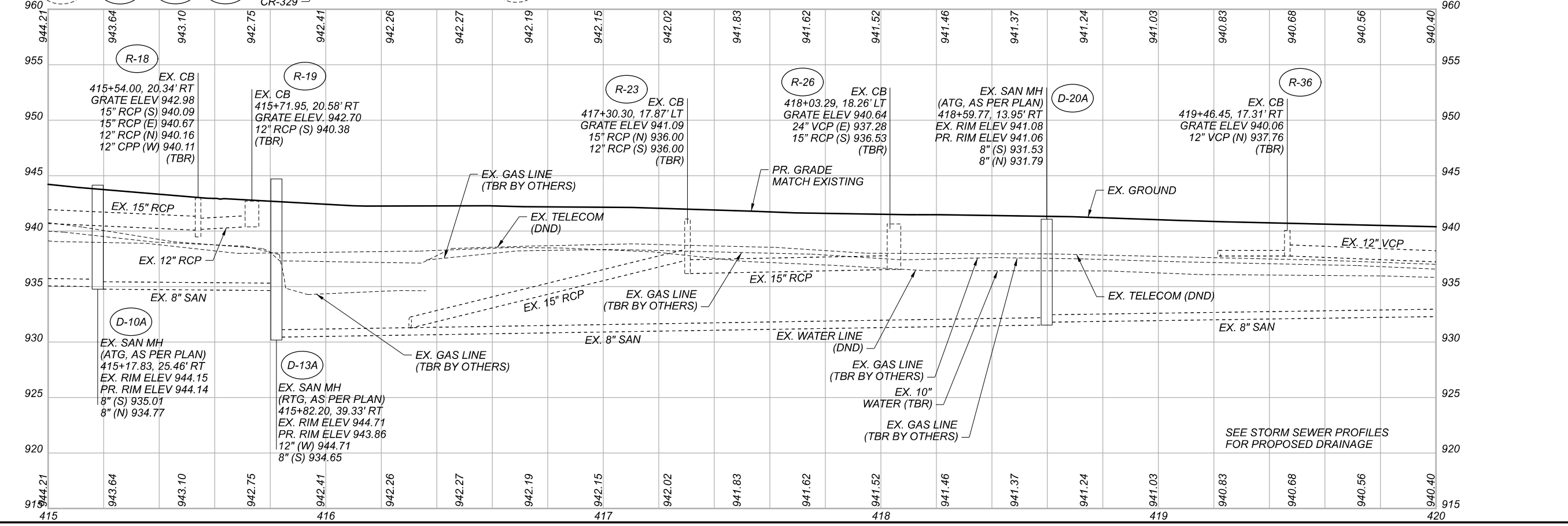
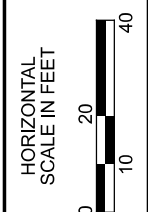


PLAN AND PROFILE - SR-46  
STA. 410+00.00 TO STA. 415+00.00

DESIGN AGENCY	Michael Baker INTERNATIONAL
DESIGNER	MZG
REVIEWER	JTH 03/25/22
PROJECT ID	109520
SHEET TOTAL	P.55 P.154

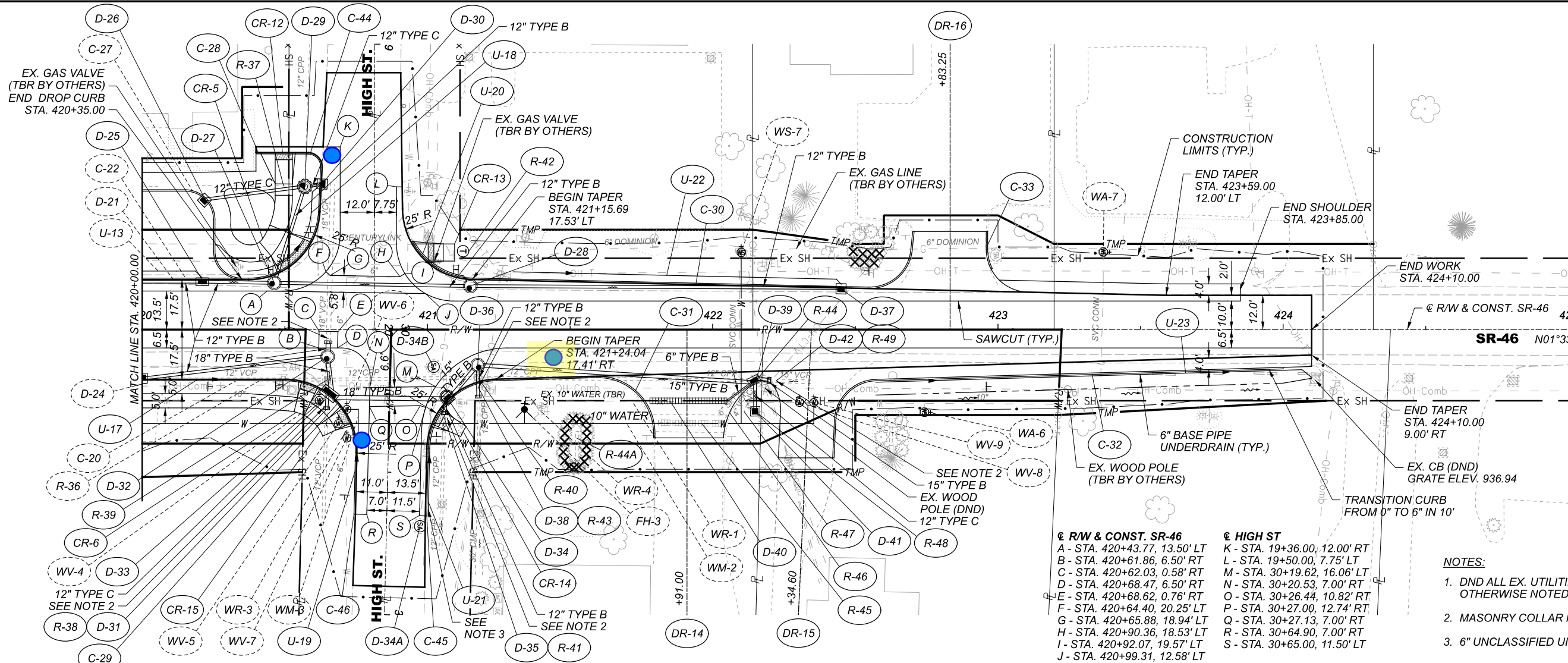


- NOTES:**
1. DND ALL EX. UTILITIES UNLESS OTHERWISE NOTED
  2. MASONRY COLLAR PER SCD DM-1.1
  3. 6" UNCLASSIFIED UNDERDRAIN



**PLAN AND PROFILE - SR-46**  
STA. 415+00.00 TO STA. 420+00.00

DESIGN AGENCY	Michael Baker INTERNATIONAL
DESIGNER	MZG
REVIEWER	JTH 03/25/22
PROJECT ID	109520
SHEET	P.56
TOTAL	P.154



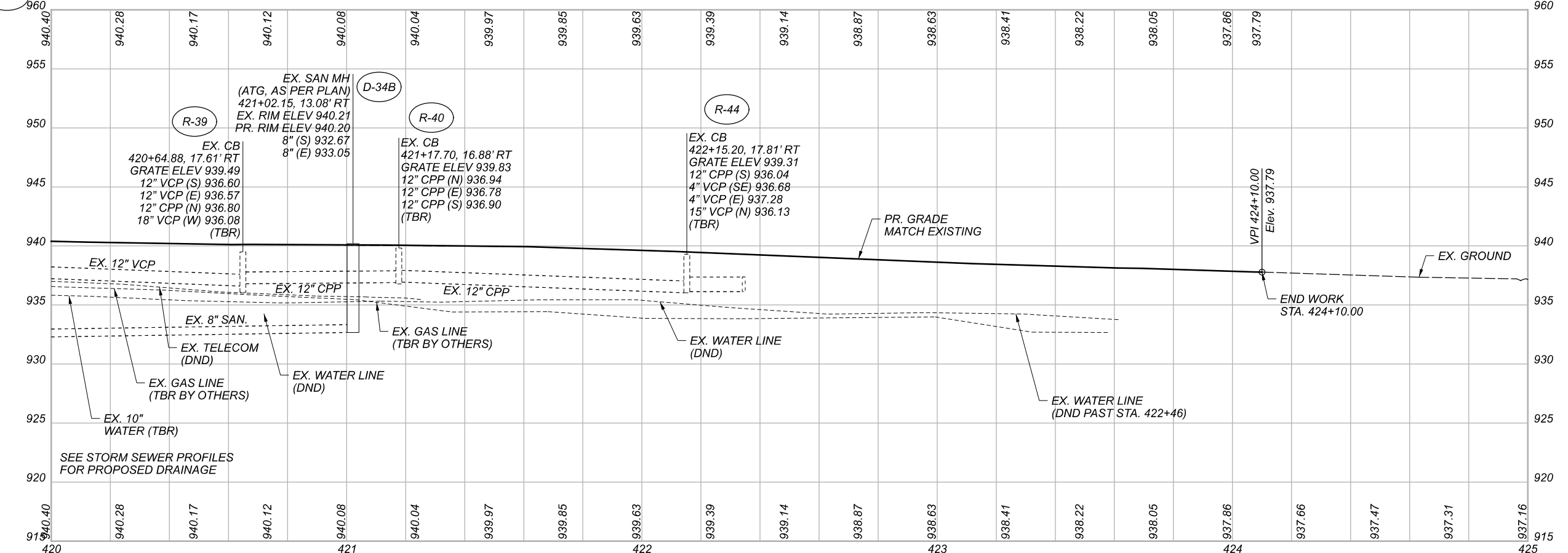
**± R/W & CONST. SR-46**

A - STA. 420+43.77, 13.50' LT  
 B - STA. 420+61.86, 6.50' RT  
 C - STA. 420+62.03, 0.58' RT  
 D - STA. 420+68.47, 6.50' RT  
 E - STA. 420+68.62, 0.76' RT  
 F - STA. 420+64.40, 20.25' LT  
 G - STA. 420+65.88, 18.94' LT  
 H - STA. 420+90.36, 18.53' LT  
 I - STA. 420+92.07, 19.57' LT  
 J - STA. 420+99.31, 12.58' LT

**± HIGH ST**

K - STA. 19+36.00, 12.00' RT  
 L - STA. 19+50.00, 7.75' LT  
 M - STA. 30+19.62, 16.06' LT  
 N - STA. 30+20.53, 7.00' RT  
 O - STA. 30+26.44, 10.82' RT  
 P - STA. 30+27.00, 12.74' RT  
 Q - STA. 30+27.13, 7.00' RT  
 R - STA. 30+64.90, 7.00' RT  
 S - STA. 30+65.00, 11.50' LT

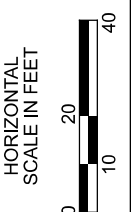
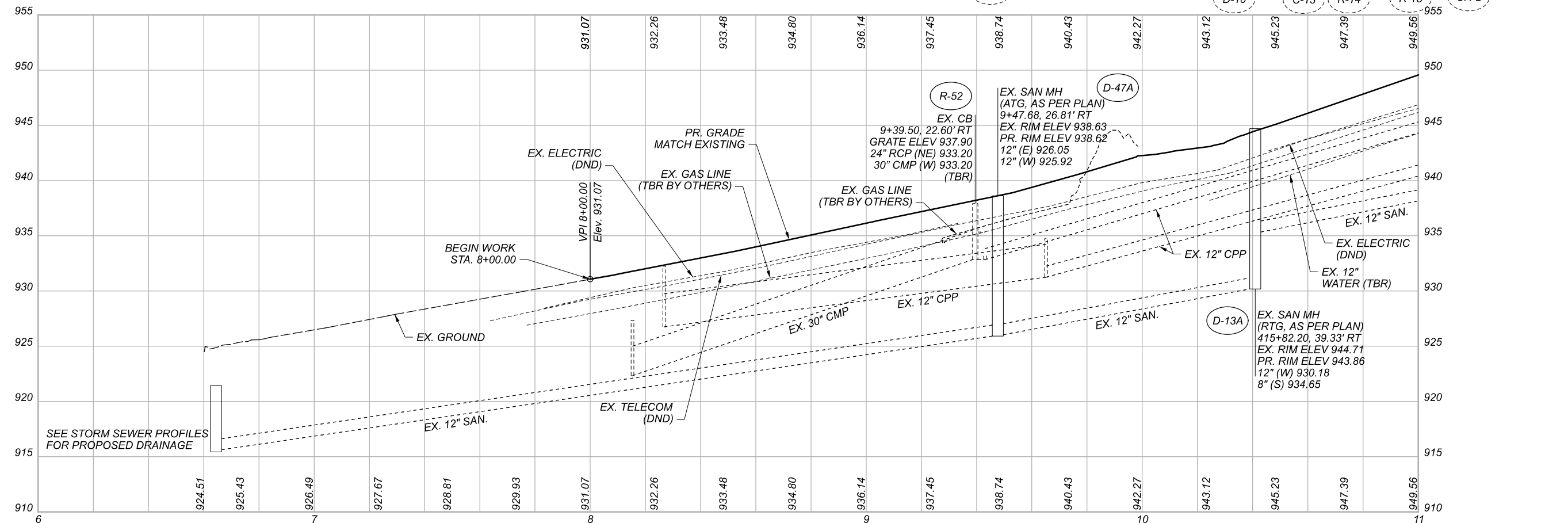
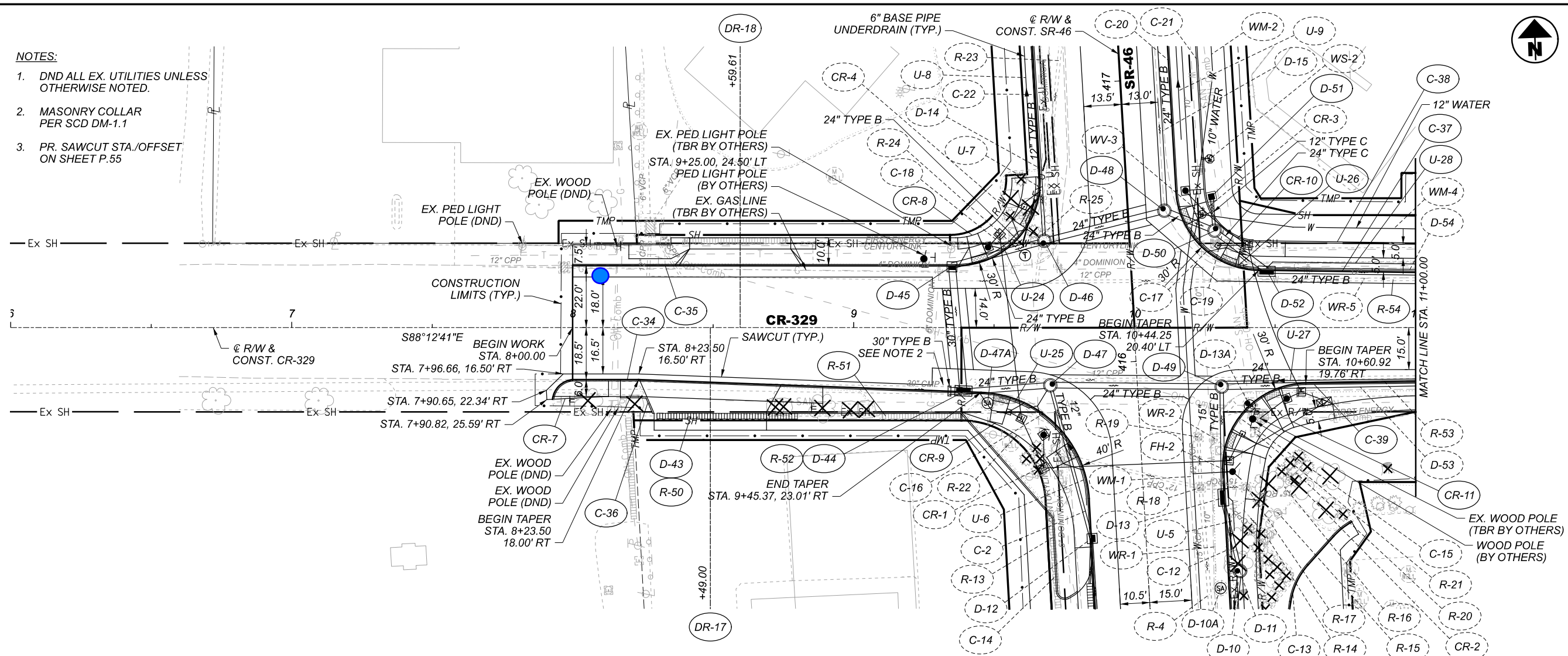
- NOTES:**
- DND ALL EX. UTILITIES UNLESS OTHERWISE NOTED.
  - MASONRY COLLAR PER SCD DM-1.1
  - 6" UNCLASSIFIED UNDERDRAIN



**PLAN AND PROFILE - SR-46**  
 STA. 420+00.00 TO STA. 425+00.00

DESIGN AGENCY	Michael Baker INTERNATIONAL
DESIGNER	MZG
REVIEWER	JTH 03/25/22
PROJECT ID	109520
SHEET TOTAL	P.57 P.154

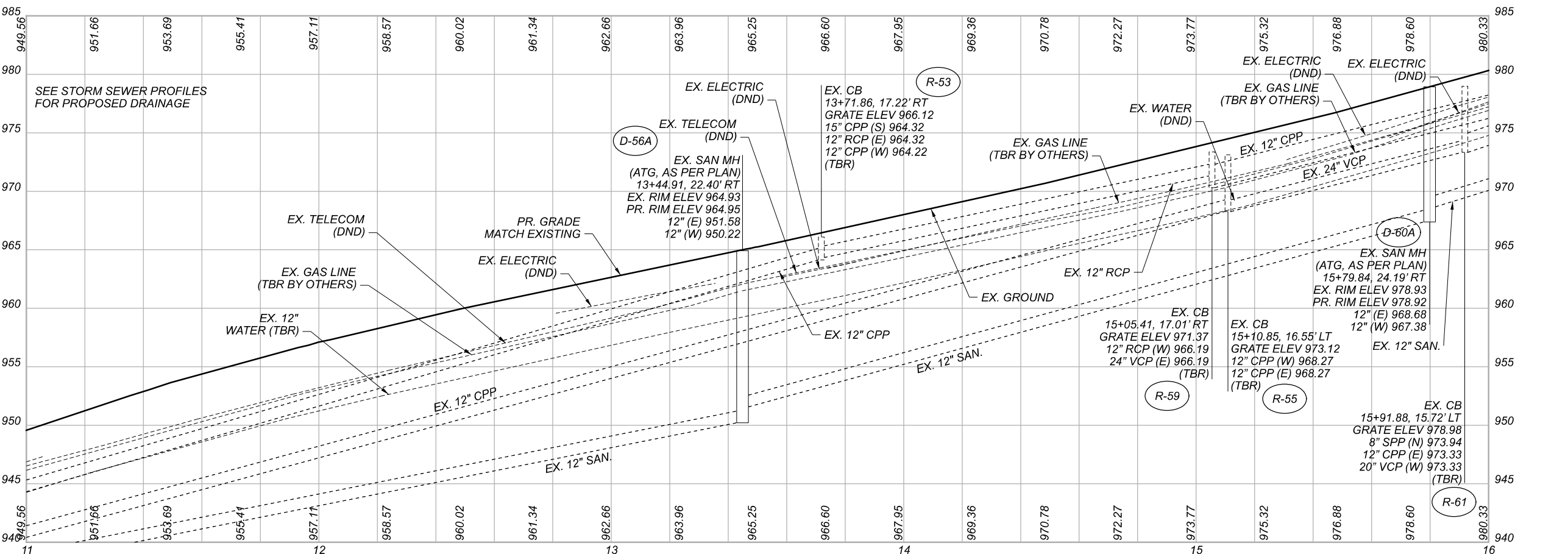
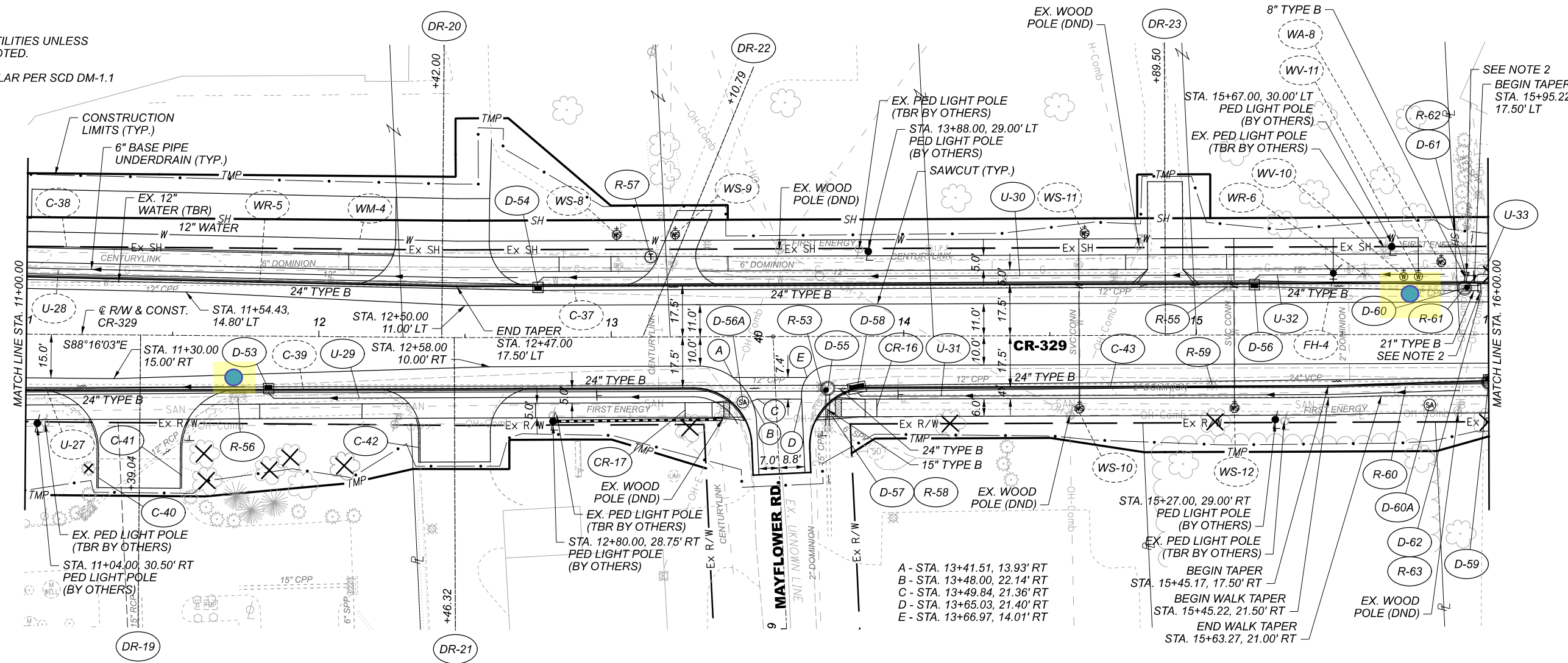
- NOTES:**
1. DND ALL EX. UTILITIES UNLESS OTHERWISE NOTED.
  2. MASONRY COLLAR PER SCD DM-1.1
  3. PR. SAWCUT STA./OFFSET ON SHEET P.55



**PLAN AND PROFILE - CR-329**  
STA. 6+00.00 TO STA. 11+00.00

DESIGN AGENCY	
DESIGNER	MZG
REVIEWER	JTH 03/25/22
PROJECT ID	109520
SHEET TOTAL	P.58 P.154

- NOTES:**
- DND ALL EX. UTILITIES UNLESS OTHERWISE NOTED.
  - MASONRY COLLAR PER SCD DM-1.1

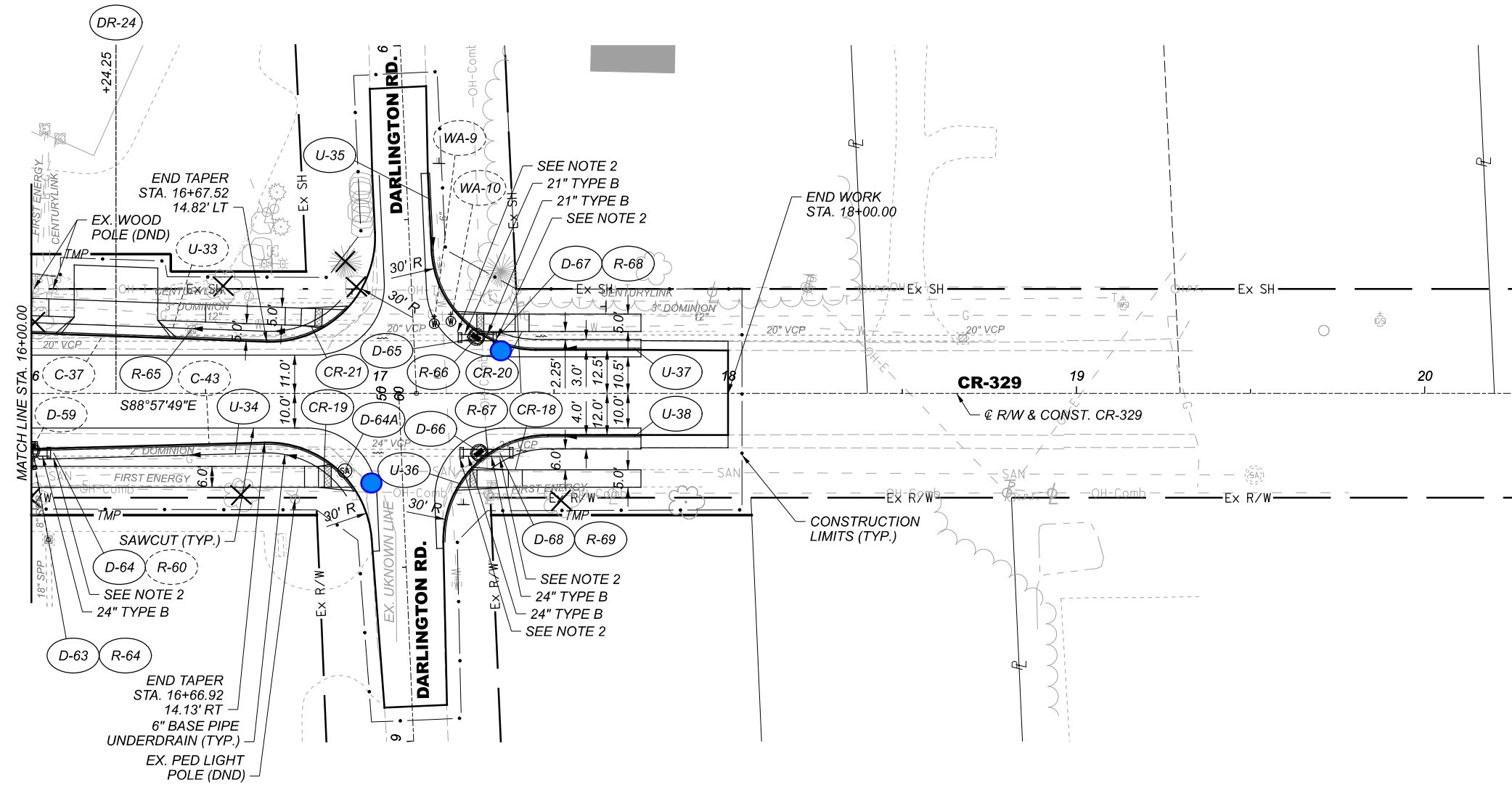


**PLAN AND PROFILE - CR-329**  
**STA. 11+00.00 TO STA. 16+00.00**

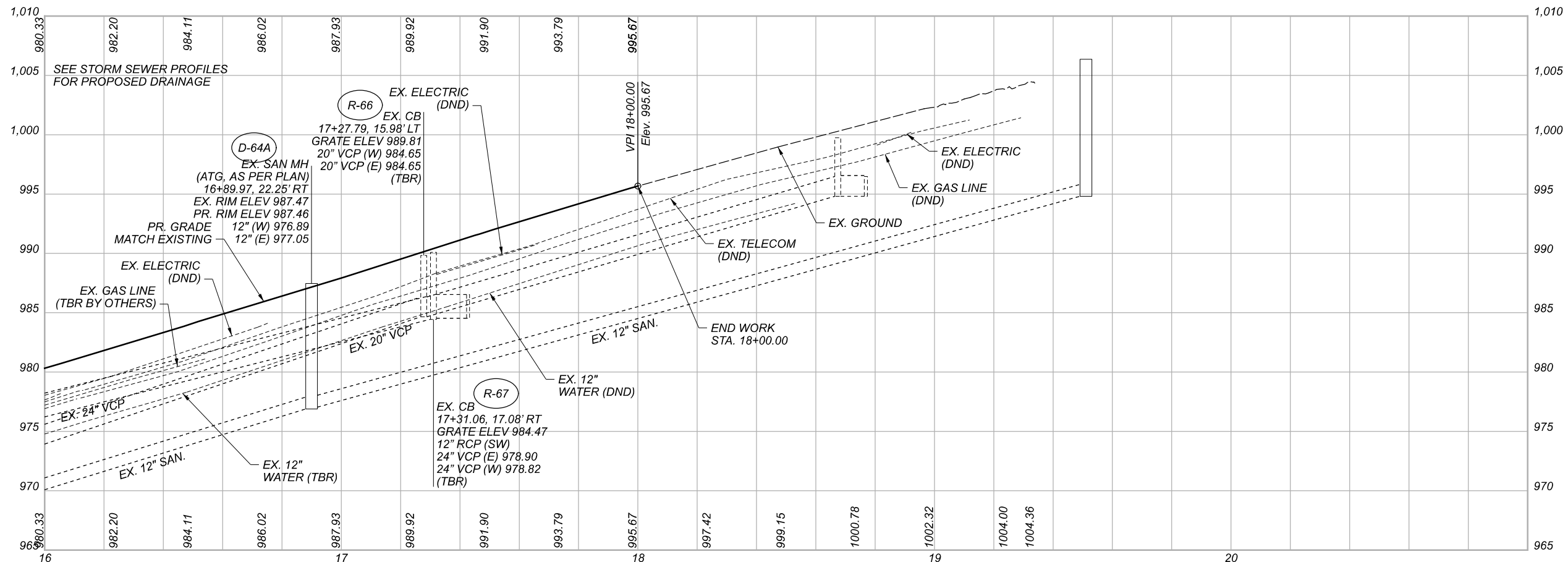
TRU-46-7.81

MODEL: 109520.GP202 PAPER: 109520.GP202 DATE: 6/10/2022 TIME: 12:51:36 PM USER: Joseph.Hogan  
 p:\mb-us-pw-bentley.com-us-pw-03\Documents\Cleveland\_OH\01\Projects\0001\Dist\109520\_400-Engineer\Roadway\Sheets\109520\_GP202.dgn

DESIGN AGENCY	Michael Baker INTERNATIONAL
DESIGNER	MZG
REVIEWER	JTH 03/25/22
PROJECT ID	109520
SHEET	P.59
TOTAL	P.154



- NOTES:**
1. DND ALL EX. UTILITIES UNLESS OTHERWISE NOTED.
  2. MASONRY COLLAR PER SCD DM-1.1



**PLAN AND PROFILE - CR-329**  
**STA. 16+00.00 TO STA. 21+00.00**

DESIGN AGENCY	Michael Baker INTERNATIONAL
DESIGNER	MZG
REVIEWER	JTH 03/25/22
PROJECT ID	109520
SHEET TOTAL	P.60 P.154