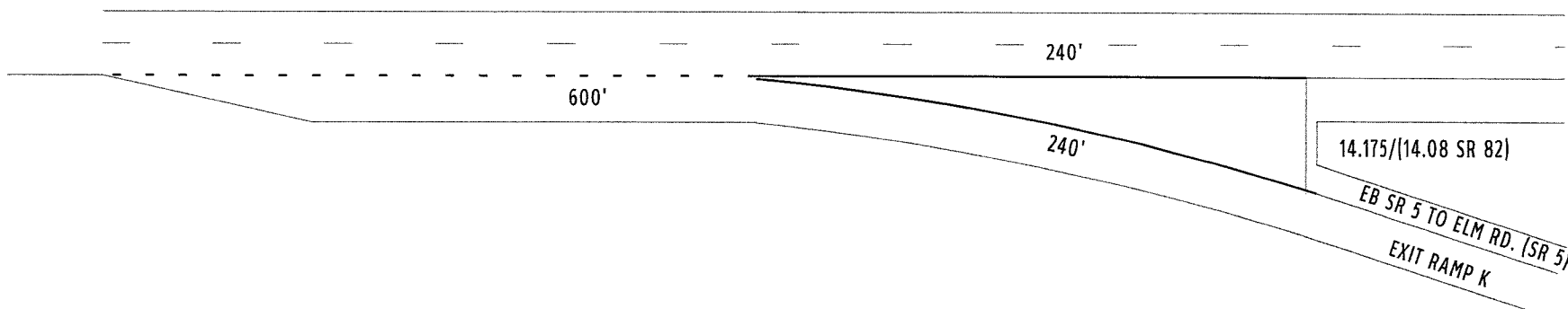
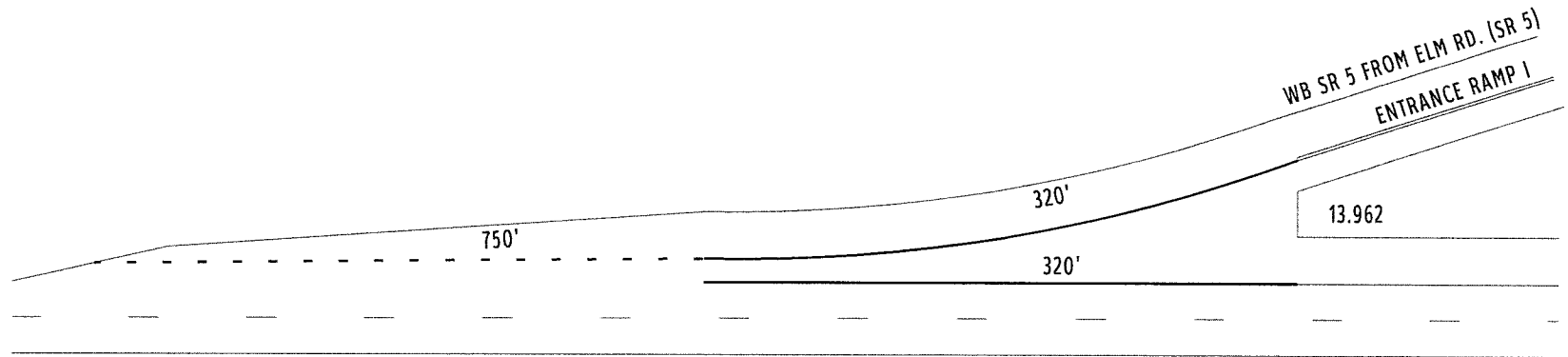
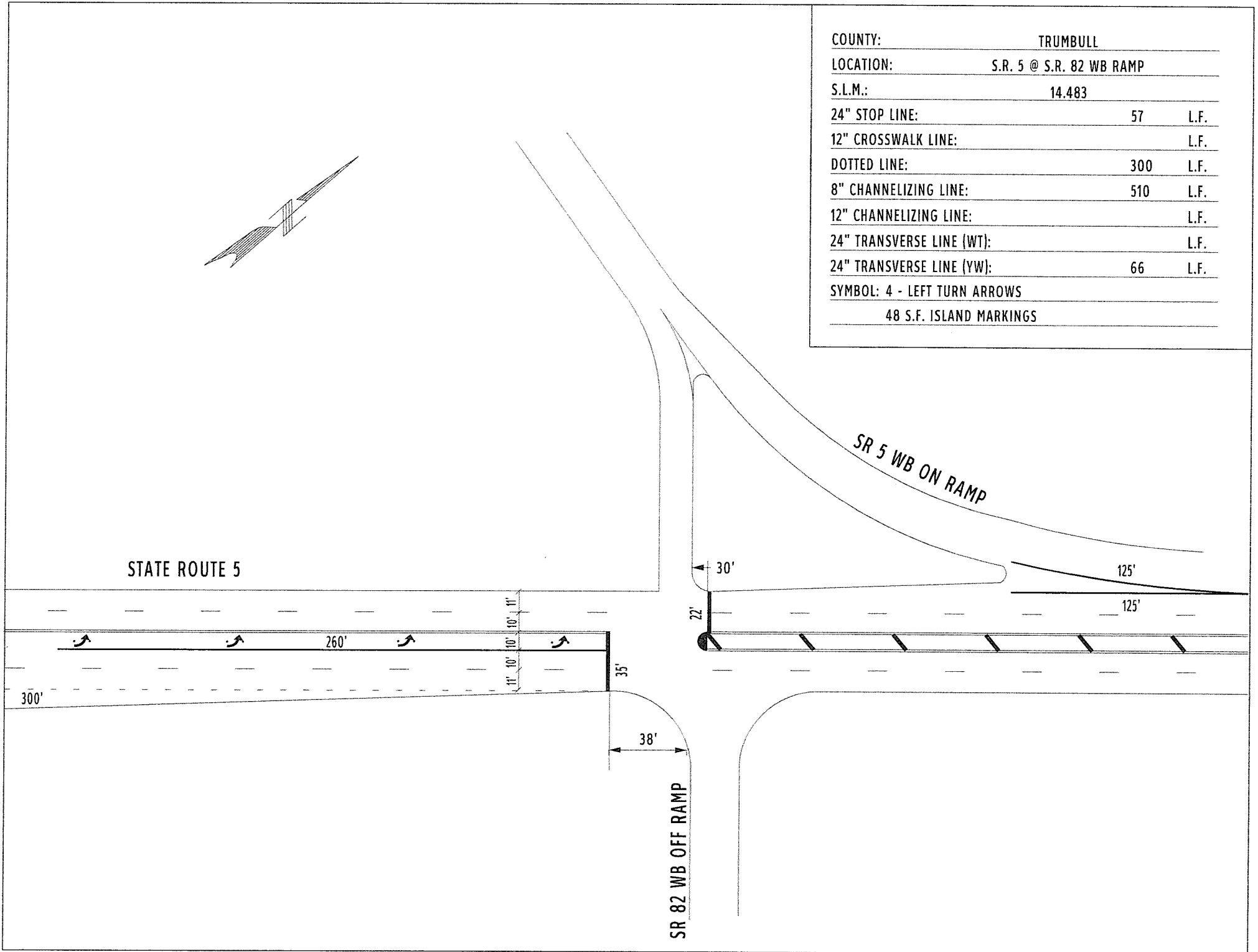


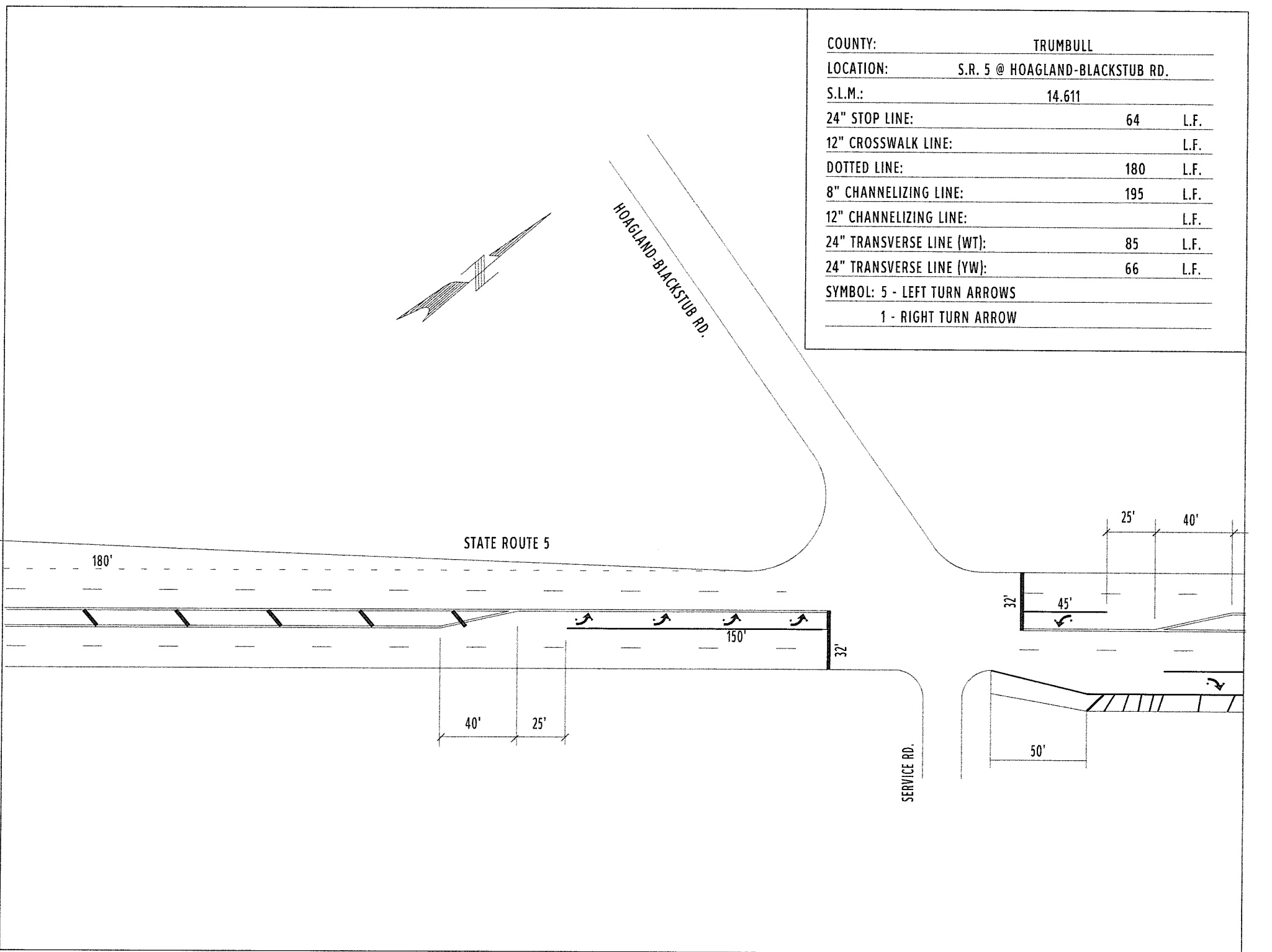
COUNTY:	TRUMBULL		
LOCATION:	S.R. 5 GORES @ ELM ROAD		
S.L.M.:	14.175		
24" STOP LINE:			L.F.
12" CROSSWALK LINE:			L.F.
DOTTED LINE:	1350		L.F.
8" CHANNELIZING LINE:	1120		L.F.
12" CHANNELIZING LINE:			L.F.
24" TRANSVERSE LINE (WT):			L.F.
24" TRANSVERSE LINE (YW):			L.F.
SYMBOL:			

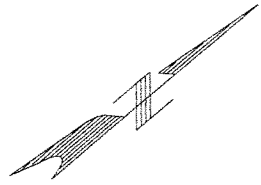


COUNTY:	TRUMBULL	
LOCATION:	S.R. 5 @ S.R. 82 WB RAMP	
S.L.M.:	14.483	
24" STOP LINE:	57	L.F.
12" CROSSWALK LINE:		L.F.
DOTTED LINE:	300	L.F.
8" CHANNELIZING LINE:	510	L.F.
12" CHANNELIZING LINE:		L.F.
24" TRANSVERSE LINE (WT):		L.F.
24" TRANSVERSE LINE (YW):	66	L.F.
SYMBOL: 4 - LEFT TURN ARROWS		
	48 S.F. ISLAND MARKINGS	

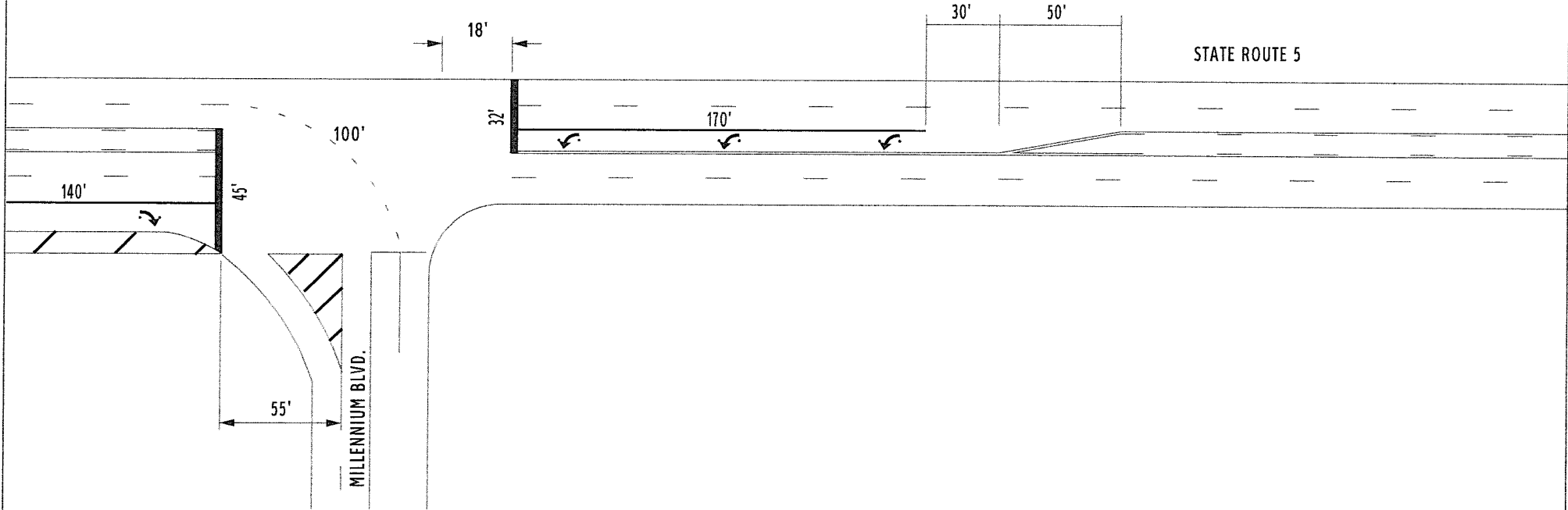


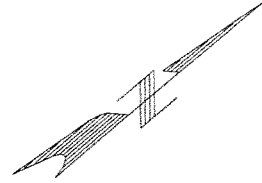
COUNTY:	TRUMBULL	
LOCATION:	S.R. 5 @ HOAGLAND-BLACKSTUB RD.	
S.L.M.:	14.611	
24" STOP LINE:	64	L.F.
12" CROSSWALK LINE:		L.F.
DOTTED LINE:	180	L.F.
8" CHANNELIZING LINE:	195	L.F.
12" CHANNELIZING LINE:		L.F.
24" TRANSVERSE LINE (WT):	85	L.F.
24" TRANSVERSE LINE (YW):	66	L.F.
SYMBOL: 5 - LEFT TURN ARROWS		
1 - RIGHT TURN ARROW		





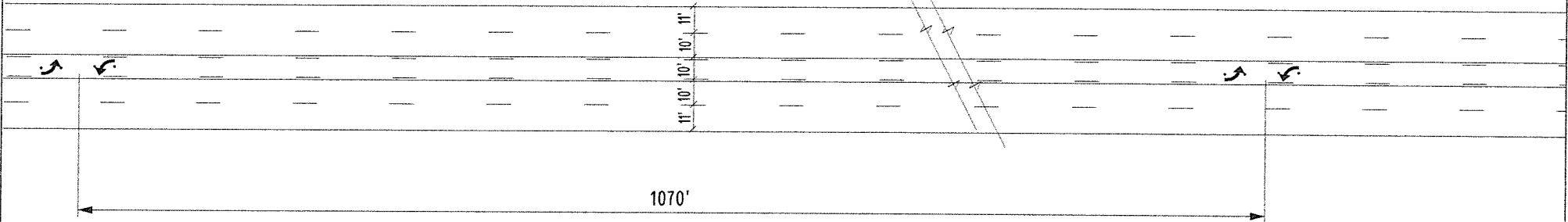
COUNTY:	TRUMBULL	
LOCATION:	S.R. 5 @ MILLENNIUM BLVD.	
S.L.M.:	14.675	
24" STOP LINE:	77	L.F.
12" CROSSWALK LINE:		L.F.
DOTTED LINE:	100	L.F.
8" CHANNELIZING LINE:	310	L.F.
12" CHANNELIZING LINE:		L.F.
24" TRANSVERSE LINE (WT):	35	L.F.
24" TRANSVERSE LINE (YW):		L.F.
SYMBOL: 3 - LEFT TURN ARROWS		
1 - RIGHT TURN ARROW		

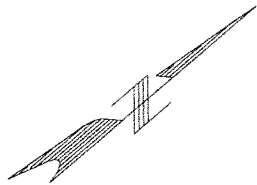




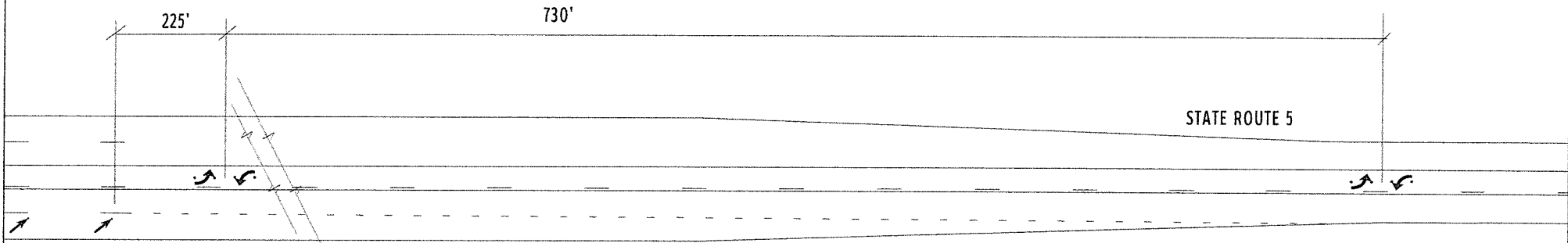
COUNTY:	TRUMBULL
LOCATION:	S.R. 5
S.L.M.:	14.875 - 15.090
24" STOP LINE:	L.F.
12" CROSSWALK LINE:	L.F.
DOTTED LINE:	L.F.
8" CHANNELIZING LINE:	L.F.
12" CHANNELIZING LINE:	L.F.
24" TRANSVERSE LINE (WT):	L.F.
24" TRANSVERSE LINE (YW):	L.F.
SYMBOL: 2 - LEFT TURN ARROWS, 2 RIGHT TURN ARROWS	

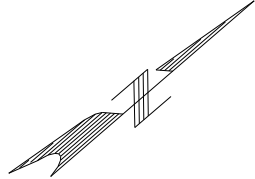
STATE ROUTE 5



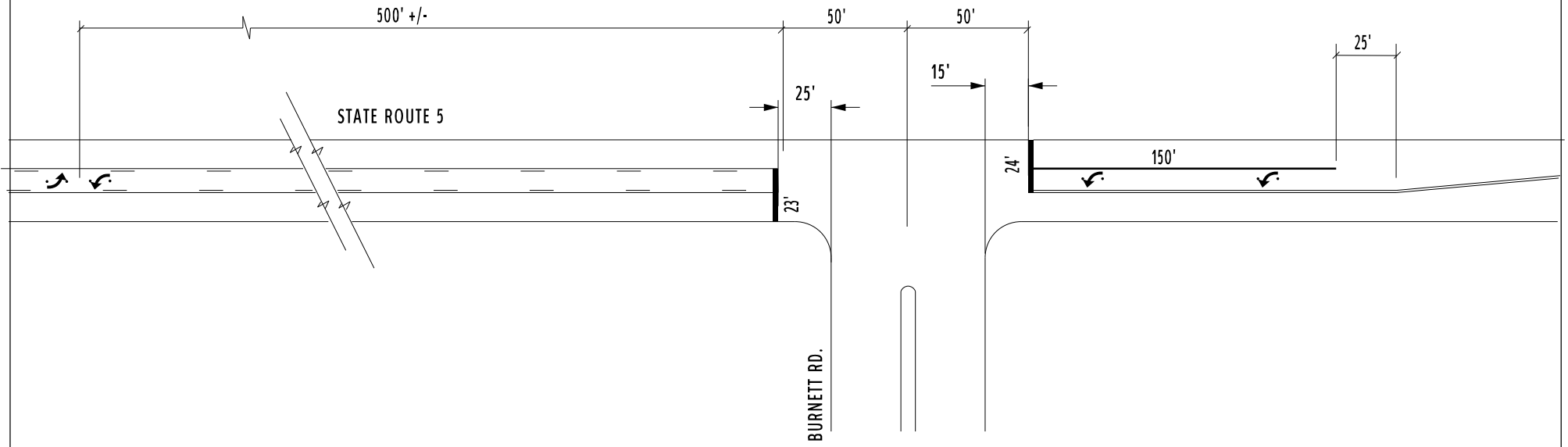


COUNTY:	TRUMBULL
LOCATION:	S.R. 5
S.L.M.:	15.215 - 15.420
24" STOP LINE:	L.F.
12" CROSSWALK LINE:	L.F.
DOTTED LINE:	950 L.F.
8" CHANNELIZING LINE:	L.F.
12" CHANNELIZING LINE:	L.F.
24" TRANSVERSE LINE (WT):	L.F.
24" TRANSVERSE LINE (YW):	L.F.
SYMBOL: 2 - LEFT TURN ARROWS, 2 - RIGHT TURN ARROWS 2 - MERGE ARROWS	

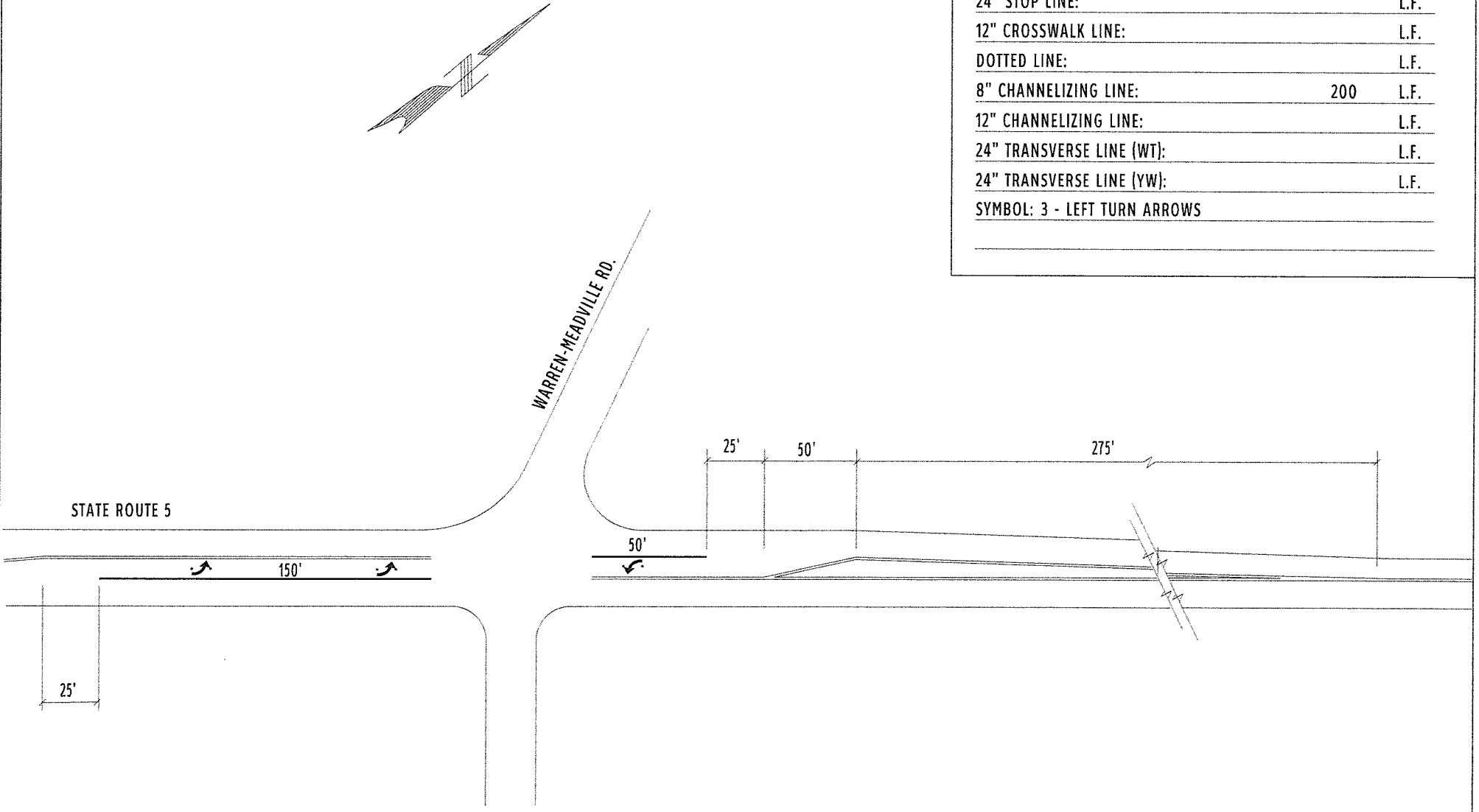


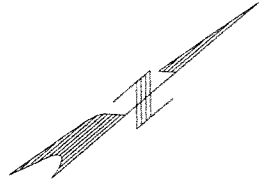


COUNTY:	TRUMBULL	
LOCATION:	S.R. 5 @ BURNETT RD.	
S.L.M.:	15.547	
24" STOP LINE:	47	L.F.
12" CROSSWALK LINE:		L.F.
DOTTED LINE:		L.F.
8" CHANNELIZING LINE:	150	L.F.
12" CHANNELIZING LINE:		L.F.
24" TRANSVERSE LINE (WT):		L.F.
24" TRANSVERSE LINE (YW):		L.F.
SYMBOL: 4 - LEFT TURN ARROWS		



COUNTY:	TRUMBULL	
LOCATION:	S.R. 5 @ WARREN-MEADVILLE RD.	
S.L.M.:	15.644	
24" STOP LINE:		L.F.
12" CROSSWALK LINE:		L.F.
DOTTED LINE:		L.F.
8" CHANNELIZING LINE:	200	L.F.
12" CHANNELIZING LINE:		L.F.
24" TRANSVERSE LINE (WT):		L.F.
24" TRANSVERSE LINE (YW):		L.F.
SYMBOL: 3 - LEFT TURN ARROWS		





COUNTY:	TRUMBULL
LOCATION:	S.R. 5 @ BEAVER TRAIL
S.L.M.:	16.583
24" STOP LINE:	L.F.
12" CROSSWALK LINE:	L.F.
DOTTED LINE:	L.F.
8" CHANNELIZING LINE:	220 L.F.
12" CHANNELIZING LINE:	L.F.
24" TRANSVERSE LINE (WT):	L.F.
24" TRANSVERSE LINE (YW):	L.F.
SYMBOL: 3 - RIGHT TURN ARROWS	

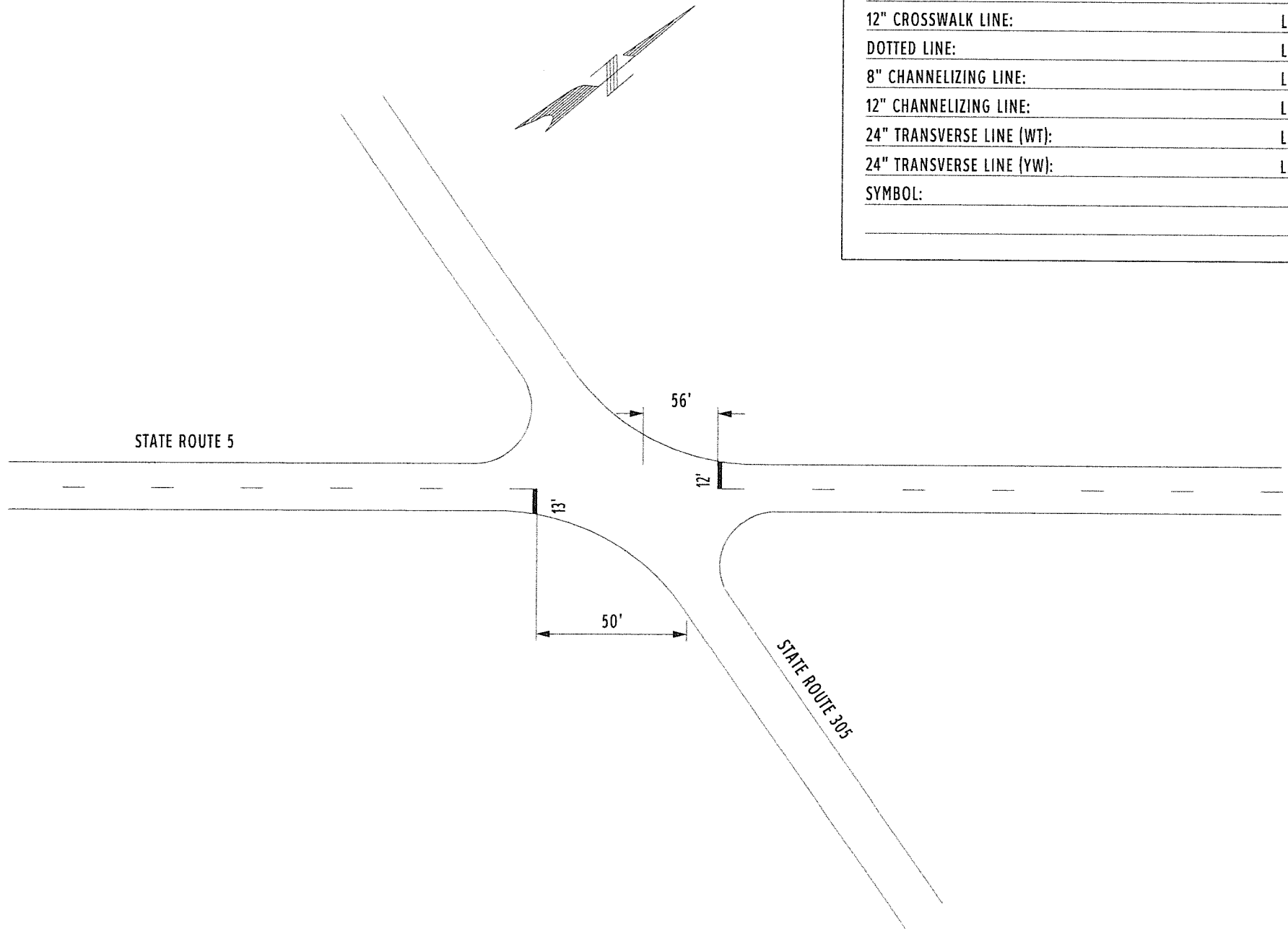
STATE ROUTE 5

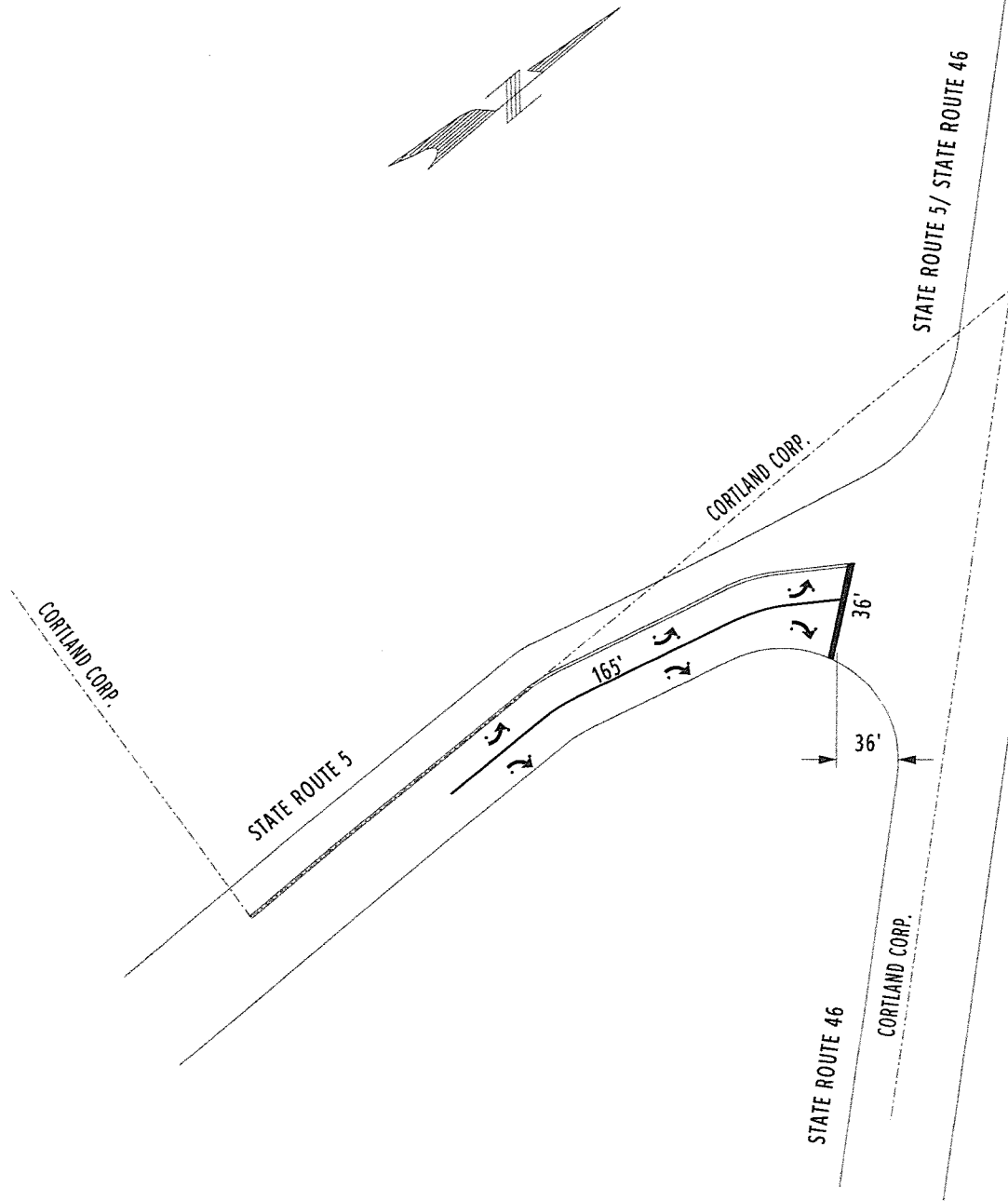
220'

BEAVER TRAIL



COUNTY:	TRUMBULL	
LOCATION:	S.R. 5 @ S.R. 305	
S.L.M.:	17.416	
24" STOP LINE:	25	L.F.
12" CROSSWALK LINE:		L.F.
DOTTED LINE:		L.F.
8" CHANNELIZING LINE:		L.F.
12" CHANNELIZING LINE:		L.F.
24" TRANSVERSE LINE (WT):		L.F.
24" TRANSVERSE LINE (YW):		L.F.
SYMBOL:		





COUNTY:	TRUMBULL	
LOCATION:	S.R. 5 @ S.R. 46	
S.L.M.:	18.285	
24" STOP LINE:	36	L.F.
12" CROSSWALK LINE:		L.F.
DOTTED LINE:		L.F.
8" CHANNELIZING LINE:	165	L.F.
12" CHANNELIZING LINE:		L.F.
24" TRANSVERSE LINE (WT):		L.F.
24" TRANSVERSE LINE (YW):		L.F.
SYMBOL: 3 - LEFT TURN ARROWS		
3 - RIGHT TURN ARROWS		