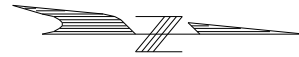
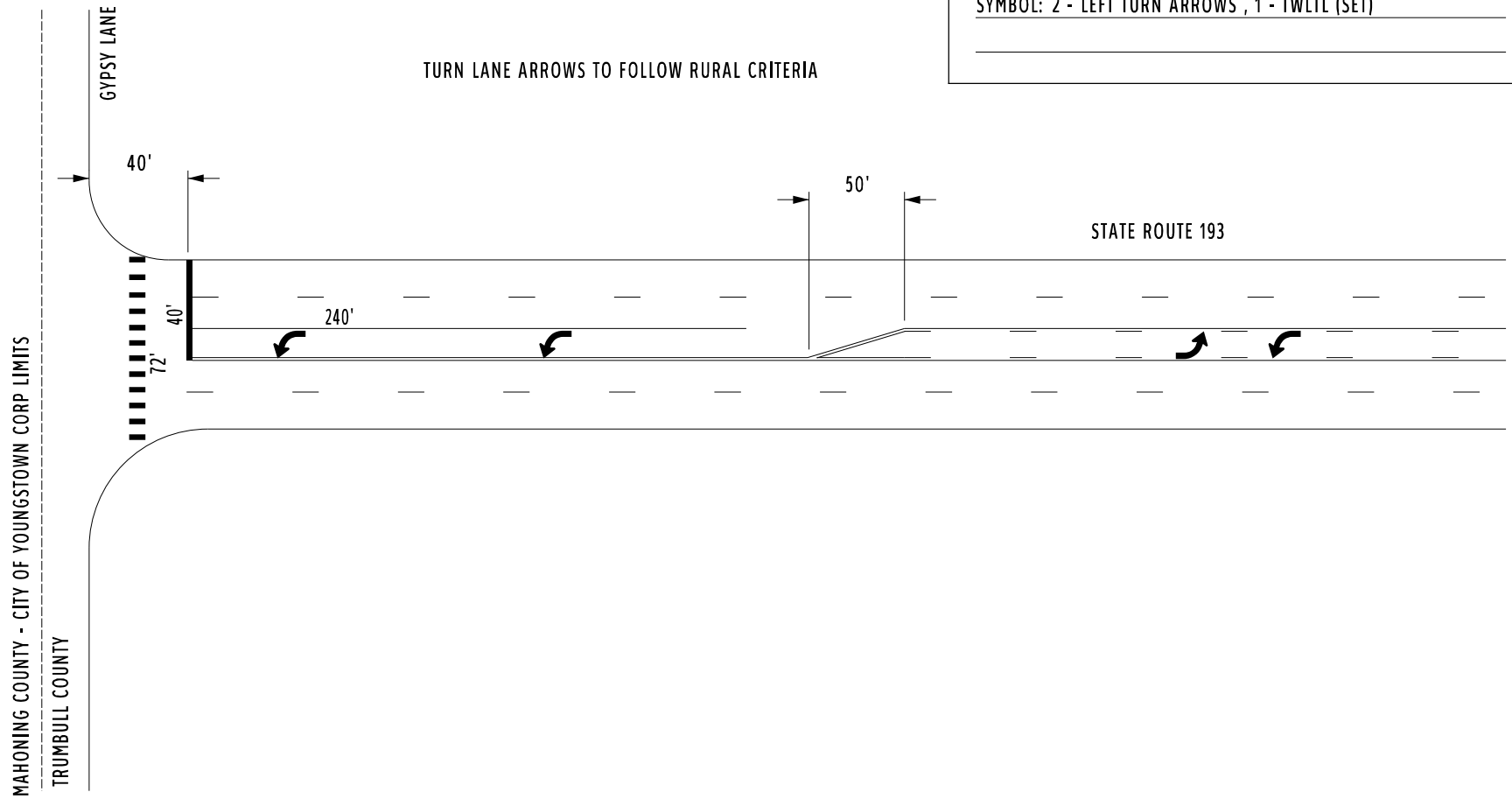


COUNTY:	TRUMBULL	
LOCATION:	S.R. 193 @ GYPSY LANE	
S.L.M.:	0.00	
24" STOP LINE:	40	L.F.
24" CROSSWALK LINE:	72	L.F.
DOTTED LINE:		L.F.
8" CHANNELIZING LINE:		L.F.
12" CHANNELIZING LINE:	240	L.F.
24" TRANSVERSE LINE (WT):		L.F.
24" TRANSVERSE LINE (YW):		L.F.
SYMBOL: 2 - LEFT TURN ARROWS , 1 - TWLTL (SET)		



TURN LANE ARROWS TO FOLLOW RURAL CRITERIA





CROMRINE AVE.

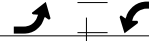
BELGRADE AVE.

STATE ROUTE 193

590'

FAIRLAWN AVE.

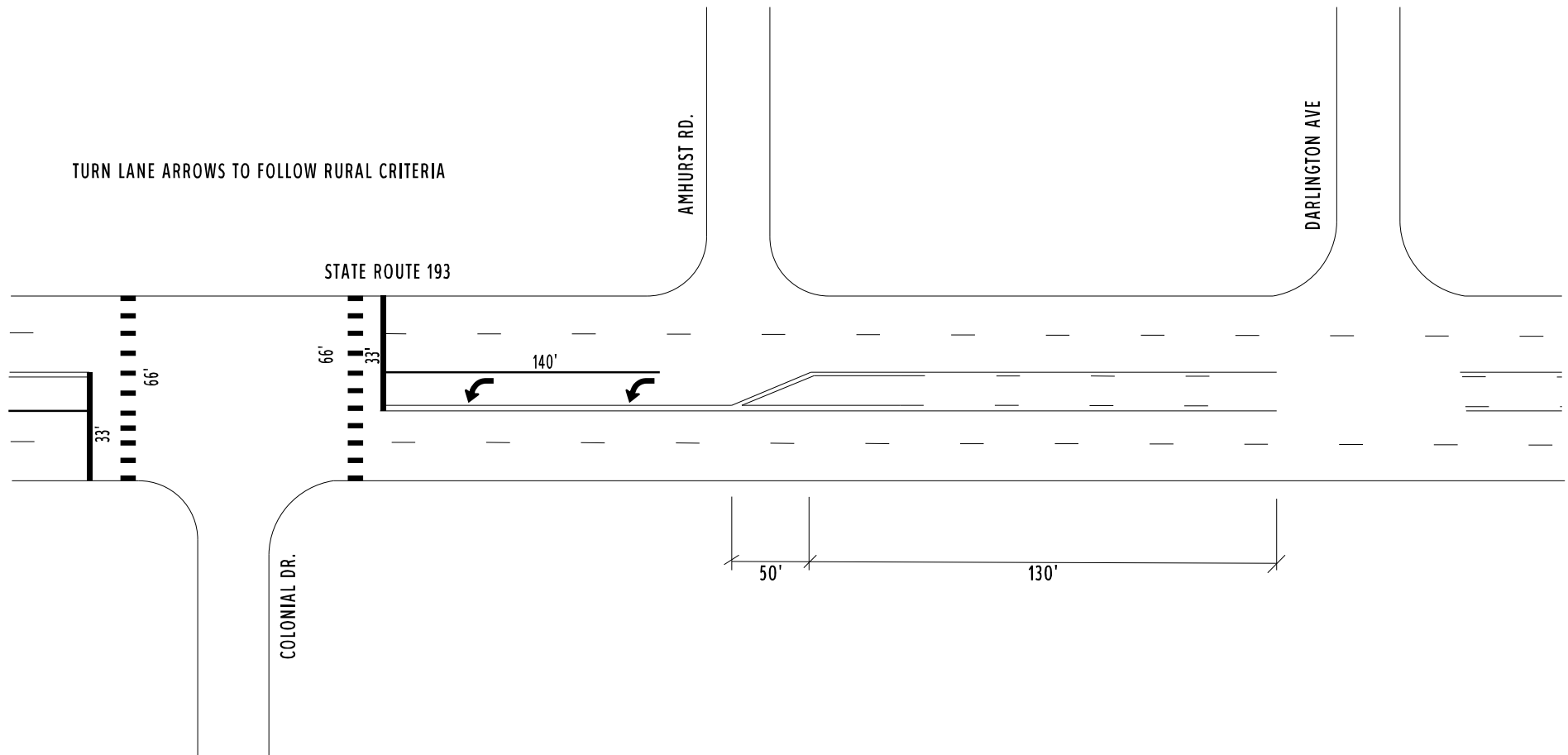
COUNTY:	TRUMBULL
LOCATION:	S.R. 193 @ TWO-WAY LEFT
S.L.M.:	0.101
24" STOP LINE:	L.F.
12" CROSSWALK LINE:	L.F.
DOTTED LINE:	L.F.
8" CHANNELIZING LINE:	L.F.
12" CHANNELIZING LINE:	L.F.
24" TRANSVERSE LINE (WT):	L.F.
24" TRANSVERSE LINE (YW):	L.F.
SYMBOL: 1 - TWLTL (SET)	

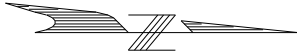




COUNTY:	TRUMBULL	
LOCATION:	S.R. 193 @ COLONIAL DR.	
S.L.M.:	0.23	
24" STOP LINE:	66	L.F.
24" CROSSWALK LINE:	132	L.F.
DOTTED LINE:		L.F.
8" CHANNELIZING LINE:		L.F.
12" CHANNELIZING LINE:	140	L.F.
24" TRANSVERSE LINE (WT):		L.F.
24" TRANSVERSE LINE (YW):		L.F.
SYMBOL: 2 - LEFT TURN ARROWS		

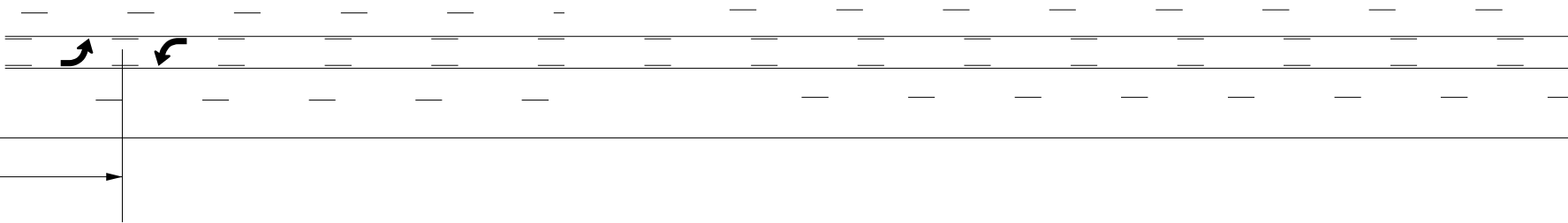
TURN LANE ARROWS TO FOLLOW RURAL CRITERIA





CRAVER AVE.

STATE ROUTE 193



COUNTY:	TRUMBULL
LOCATION:	S.R. 193 @ TWO-WAY LEFT
S.L.M.:	0.45
24" STOP LINE:	L.F.
12" CROSSWALK LINE:	L.F.
DOTTED LINE:	L.F.
8" CHANNELIZING LINE:	L.F.
12" CHANNELIZING LINE:	L.F.
24" TRANSVERSE LINE (WT):	L.F.
24" TRANSVERSE LINE (YW):	L.F.
SYMBOL: 1 - TWLTL (SET)	



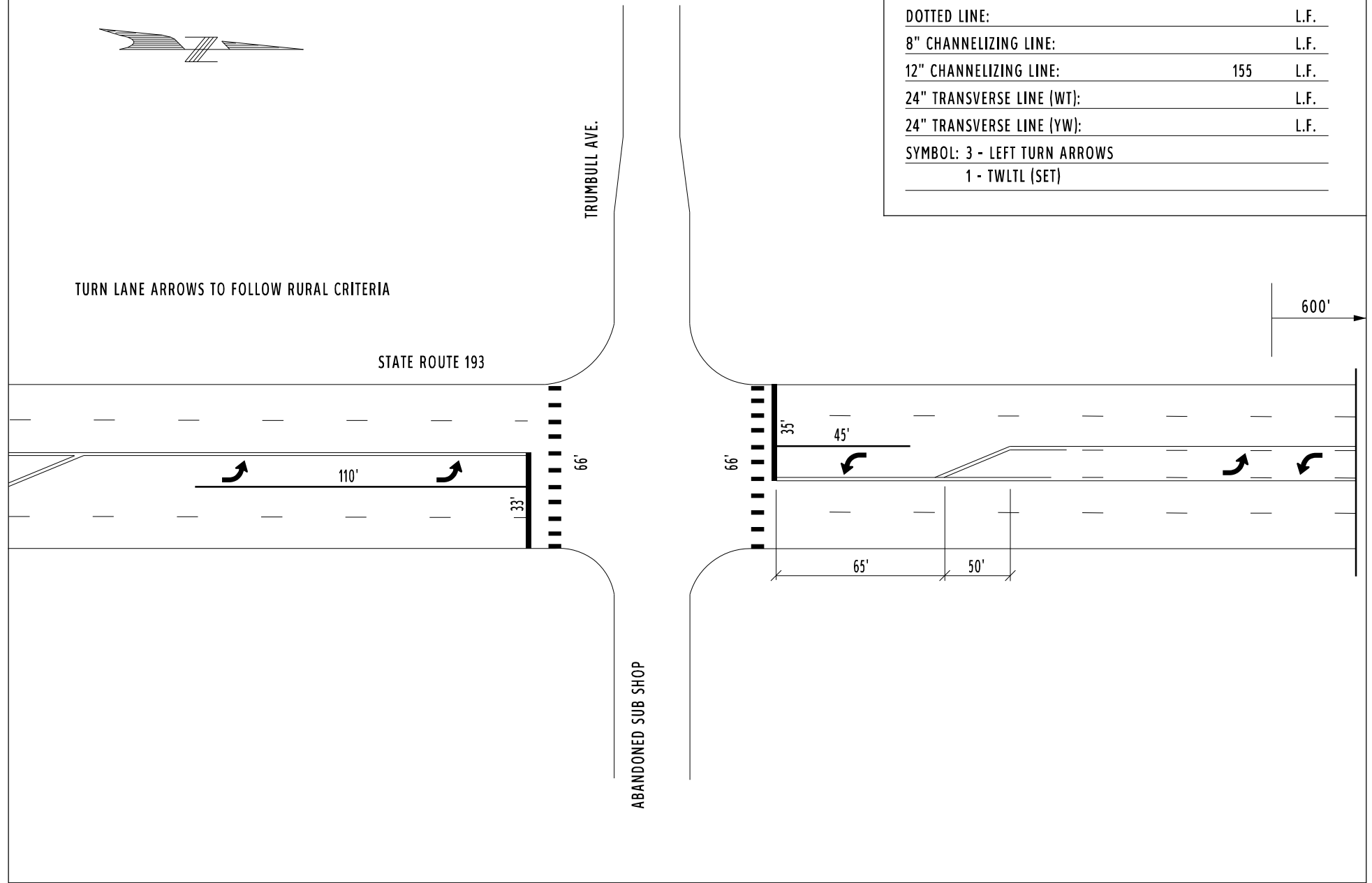
COUNTY:	TRUMBULL	
LOCATION:	S.R. 193 @ TRUMBULL AVE.	
S.L.M.:	0.514	
24" STOP LINE:	68	L.F.
24" CROSSWALK LINE:	132	L.F.
DOTTED LINE:		L.F.
8" CHANNELIZING LINE:		L.F.
12" CHANNELIZING LINE:	155	L.F.
24" TRANSVERSE LINE (WT):		L.F.
24" TRANSVERSE LINE (YW):		L.F.
SYMBOL: 3 - LEFT TURN ARROWS		
1 - TWLTL (SET)		

TURN LANE ARROWS TO FOLLOW RURAL CRITERIA

TRUMBULL AVE.

STATE ROUTE 193

ABANDONED SUB SHOP





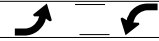
COUNTY:	TRUMBULL
LOCATION:	S.R. 193 @ TWO-WAY LEFT
S.L.M.:	0.56 - 0.77
24" STOP LINE:	L.F.
12" CROSSWALK LINE:	L.F.
DOTTED LINE:	L.F.
8" CHANNELIZING LINE:	L.F.
12" CHANNELIZING LINE:	L.F.
24" TRANSVERSE LINE (WT):	L.F.
24" TRANSVERSE LINE (YW):	L.F.
SYMBOL: 1 - TWLTL (SET)	

600'

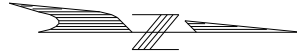
STATE ROUTE 193

EUCLID BLVD.

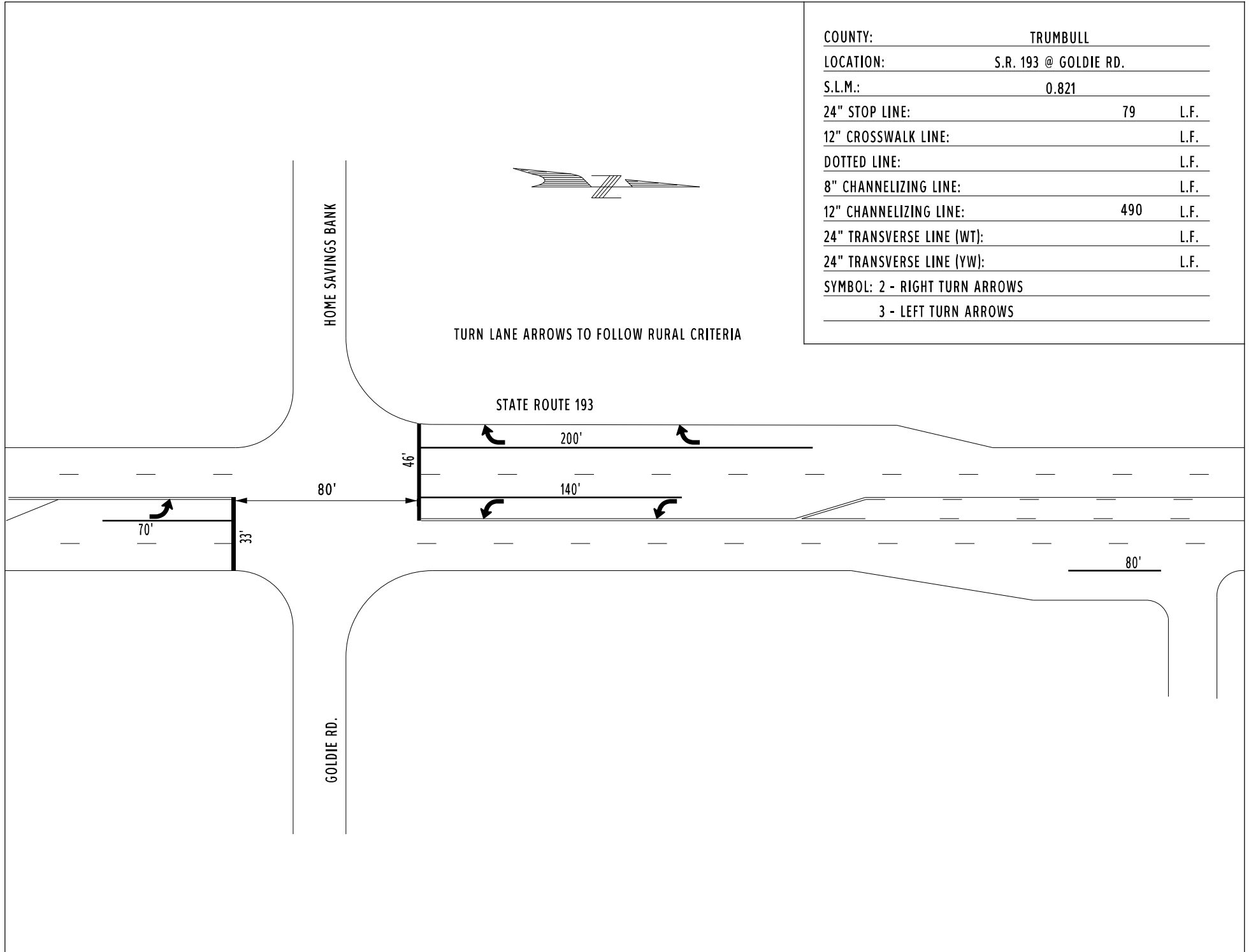
MANSELL DR.

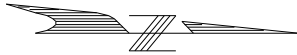


COUNTY:	TRUMBULL	
LOCATION:	S.R. 193 @ GOLDIE RD.	
S.L.M.:	0.821	
24" STOP LINE:	79	L.F.
12" CROSSWALK LINE:		L.F.
DOTTED LINE:		L.F.
8" CHANNELIZING LINE:		L.F.
12" CHANNELIZING LINE:	490	L.F.
24" TRANSVERSE LINE (WT):		L.F.
24" TRANSVERSE LINE (YW):		L.F.
SYMBOL: 2 - RIGHT TURN ARROWS		
3 - LEFT TURN ARROWS		



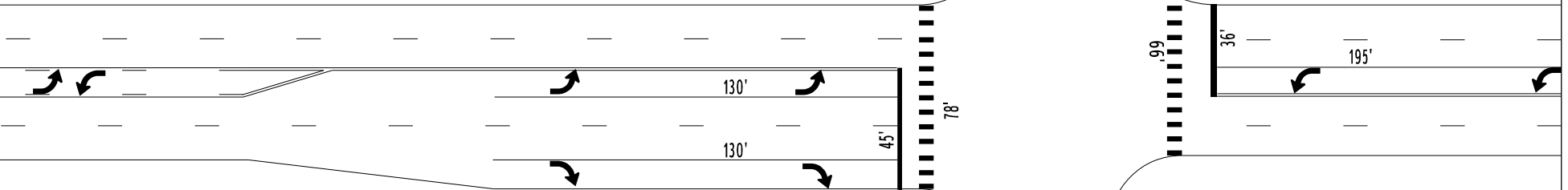
TURN LANE ARROWS TO FOLLOW RURAL CRITERIA





COUNTY:	TRUMBULL	
LOCATION:	S.R. 193 @ LIBERTY PLAZA / MCDONALDS	
S.L.M.:	1.02	
24" STOP LINE:	81	L.F.
24" CROSSWALK LINE:	144	L.F.
DOTTED LINE:		L.F.
8" CHANNELIZING LINE:		L.F.
12" CHANNELIZING LINE:	455	L.F.
24" TRANSVERSE LINE (WT):		L.F.
24" TRANSVERSE LINE (YW):		L.F.
SYMBOL: 4 - LEFT TURN ARROWS		
2 - RIGHT TURN ARROWS		
1 - TWLTL (SET)		

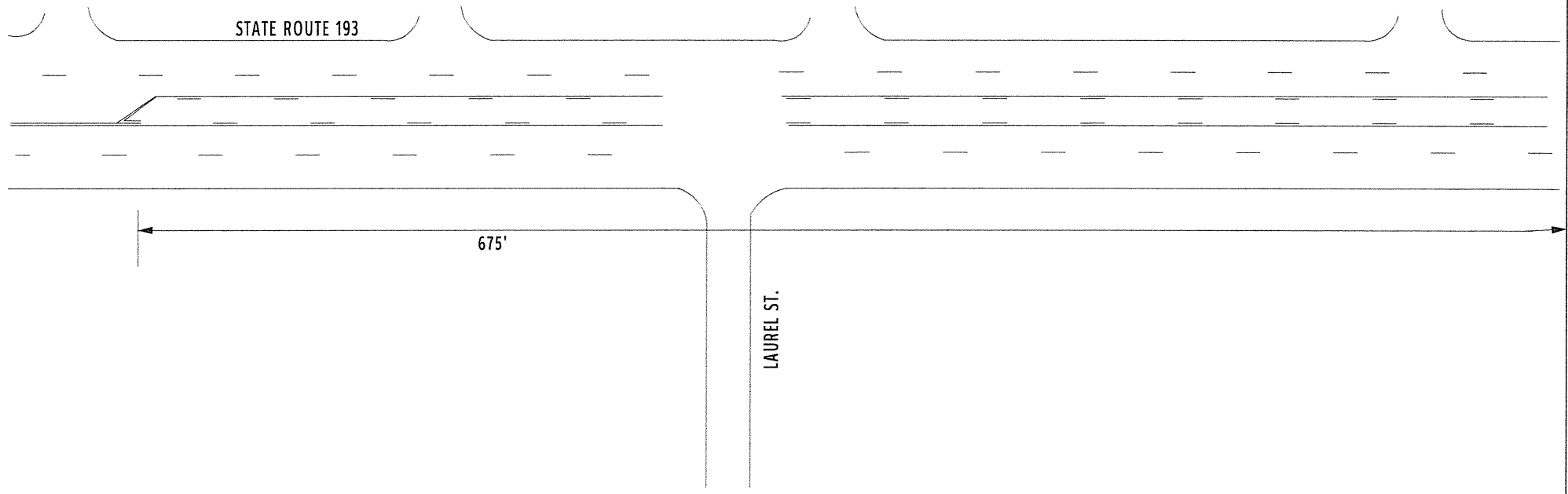
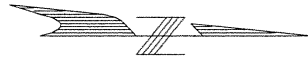
STATE ROUTE 193



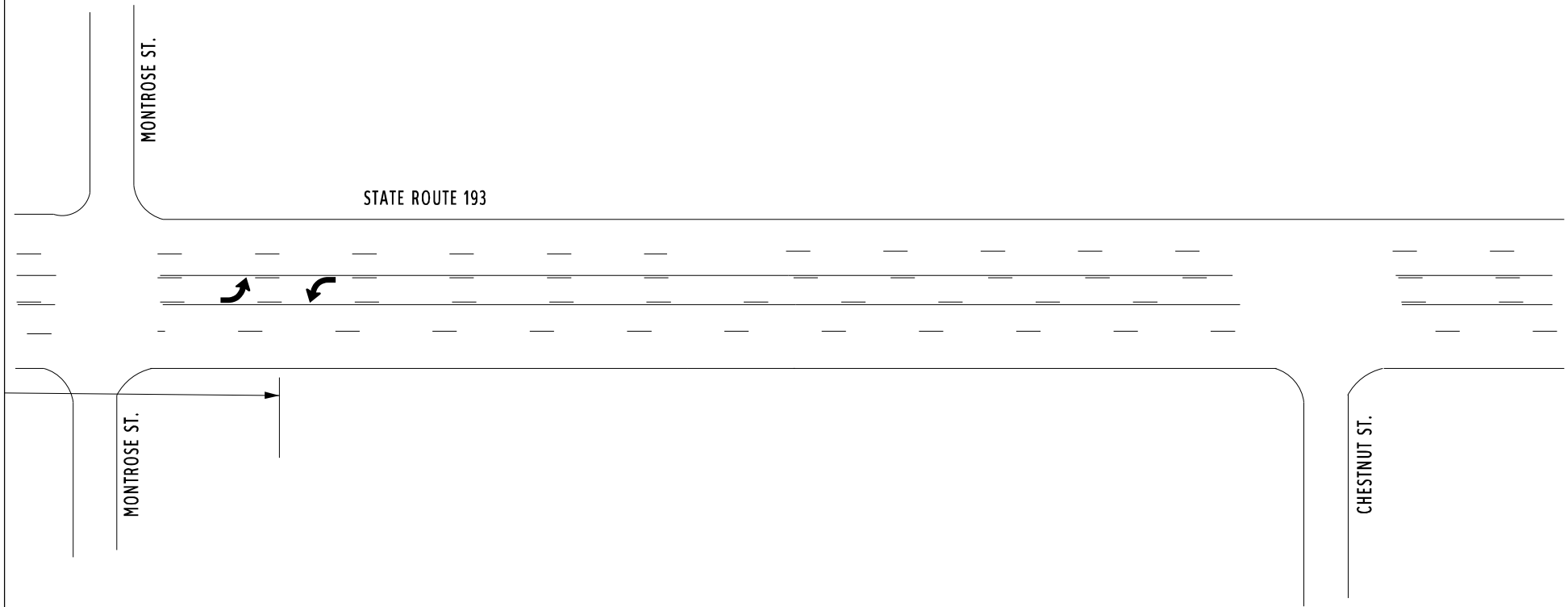
TURN LANE ARROWS TO FOLLOW RURAL CRITERIA

LIBERTY PLAZA ENTRANCE

COUNTY:	TRUMBULL
LOCATION:	S.R. 193 @ TWO-WAY LEFT
S.L.M.:	1.07 - 1.17
24" STOP LINE:	L.F.
12" CROSSWALK LINE:	L.F.
DOTTED LINE:	L.F.
8" CHANNELIZING LINE:	L.F.
12" CHANNELIZING LINE:	L.F.
24" TRANSVERSE LINE (WT):	L.F.
24" TRANSVERSE LINE (YW):	L.F.
SYMBOL:	



COUNTY:	TRUMBULL
LOCATION:	S.R. 193 @ TWO-WAY LEFT
S.L.M.:	1.175 - 1.29
24" STOP LINE:	L.F.
12" CROSSWALK LINE:	L.F.
DOTTED LINE:	L.F.
8" CHANNELIZING LINE:	L.F.
12" CHANNELIZING LINE:	L.F.
24" TRANSVERSE LINE (WT):	L.F.
24" TRANSVERSE LINE (YW):	L.F.
SYMBOL: 1 - TWLTL (SET)	



STATE ROUTE 193

MONTROSE ST.

MONTROSE ST.

CHESTNUT ST.

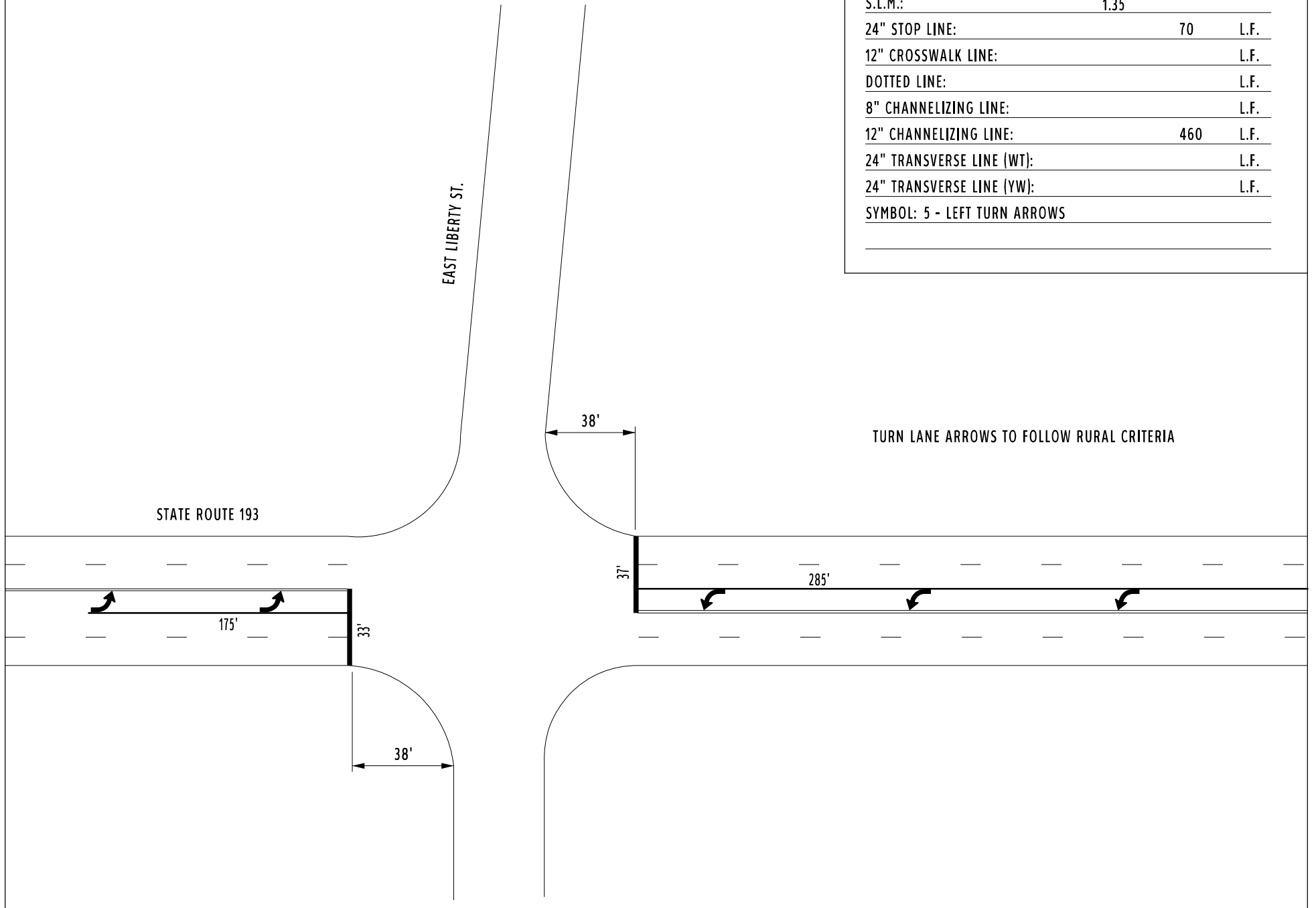


COUNTY:	TRUMBULL	
LOCATION:	S.R. 193 @ EAST LIBERTY ST.	
S.L.M.:	1.35	
24" STOP LINE:	70	L.F.
12" CROSSWALK LINE:		L.F.
DOTTED LINE:		L.F.
8" CHANNELIZING LINE:		L.F.
12" CHANNELIZING LINE:	460	L.F.
24" TRANSVERSE LINE (WT):		L.F.
24" TRANSVERSE LINE (YW):		L.F.
SYMBOL: 5 - LEFT TURN ARROWS		

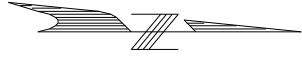
EAST LIBERTY ST.

STATE ROUTE 193

TURN LANE ARROWS TO FOLLOW RURAL CRITERIA

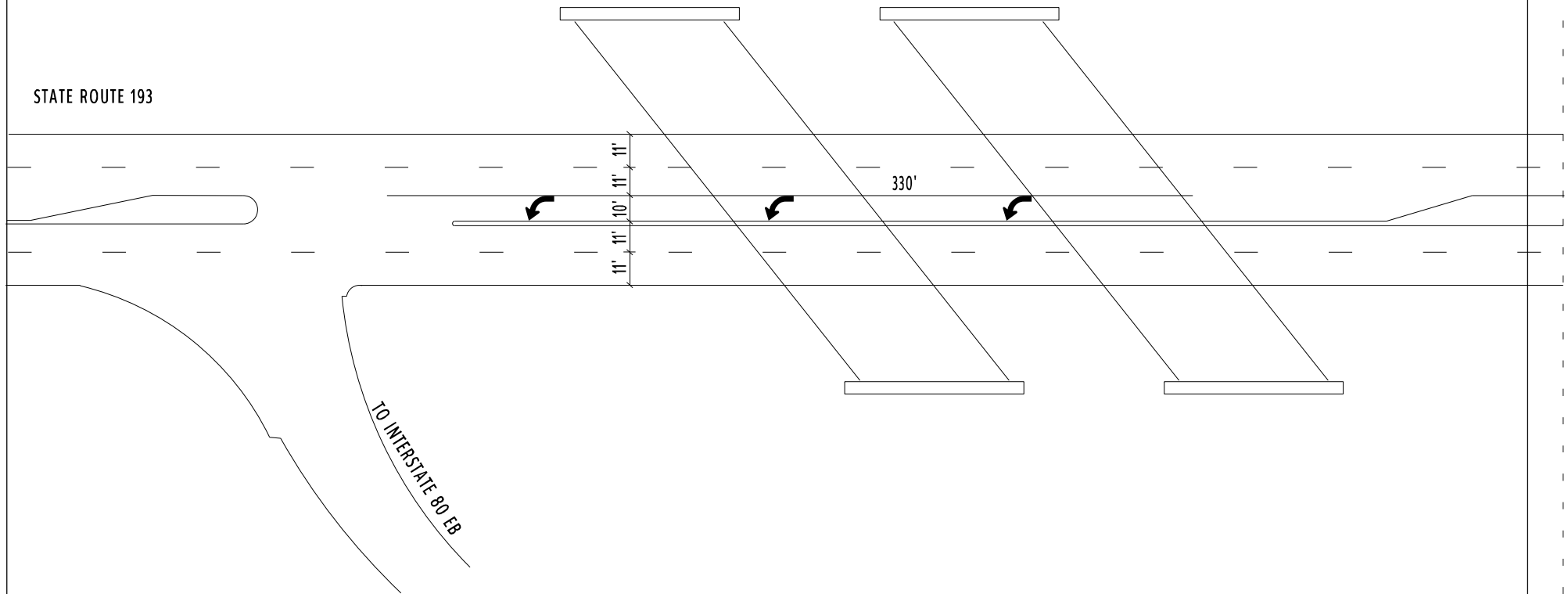


COUNTY:	TRUMBULL	
LOCATION:	S.R. 193 @ I-80 EB RAMP	
S.L.M.:	1.50	
24" STOP LINE:		L.F.
12" CROSSWALK LINE:		L.F.
DOTTED LINE:		L.F.
8" CHANNELIZING LINE:		L.F.
12" CHANNELIZING LINE:	330	L.F.
24" TRANSVERSE LINE (WT):		L.F.
24" TRANSVERSE LINE (YW):		L.F.
SYMBOL: 3 - LEFT TURN ARROWS		

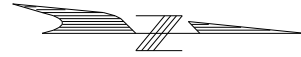


TURN LANE ARROWS TO FOLLOW RURAL CRITERIA

STATE ROUTE 193



COUNTY:	TRUMBULL	
LOCATION:	S.R. 193 @ I-80 WB RAMP	
S.L.M.:	1.65	
24" STOP LINE:	35	L.F.
12" CROSSWALK LINE:		L.F.
DOTTED LINE:	215	L.F.
8" CHANNELIZING LINE:		L.F.
12" CHANNELIZING LINE:	520	L.F.
24" TRANSVERSE LINE (WT):		L.F.
24" TRANSVERSE LINE (YW):		L.F.
SYMBOL: 3 - LEFT TURN ARROWS		



STATE ROUTE 193

MEDIAN

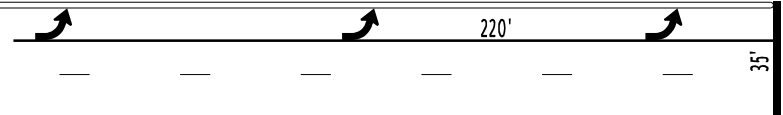
215'

150'

150'

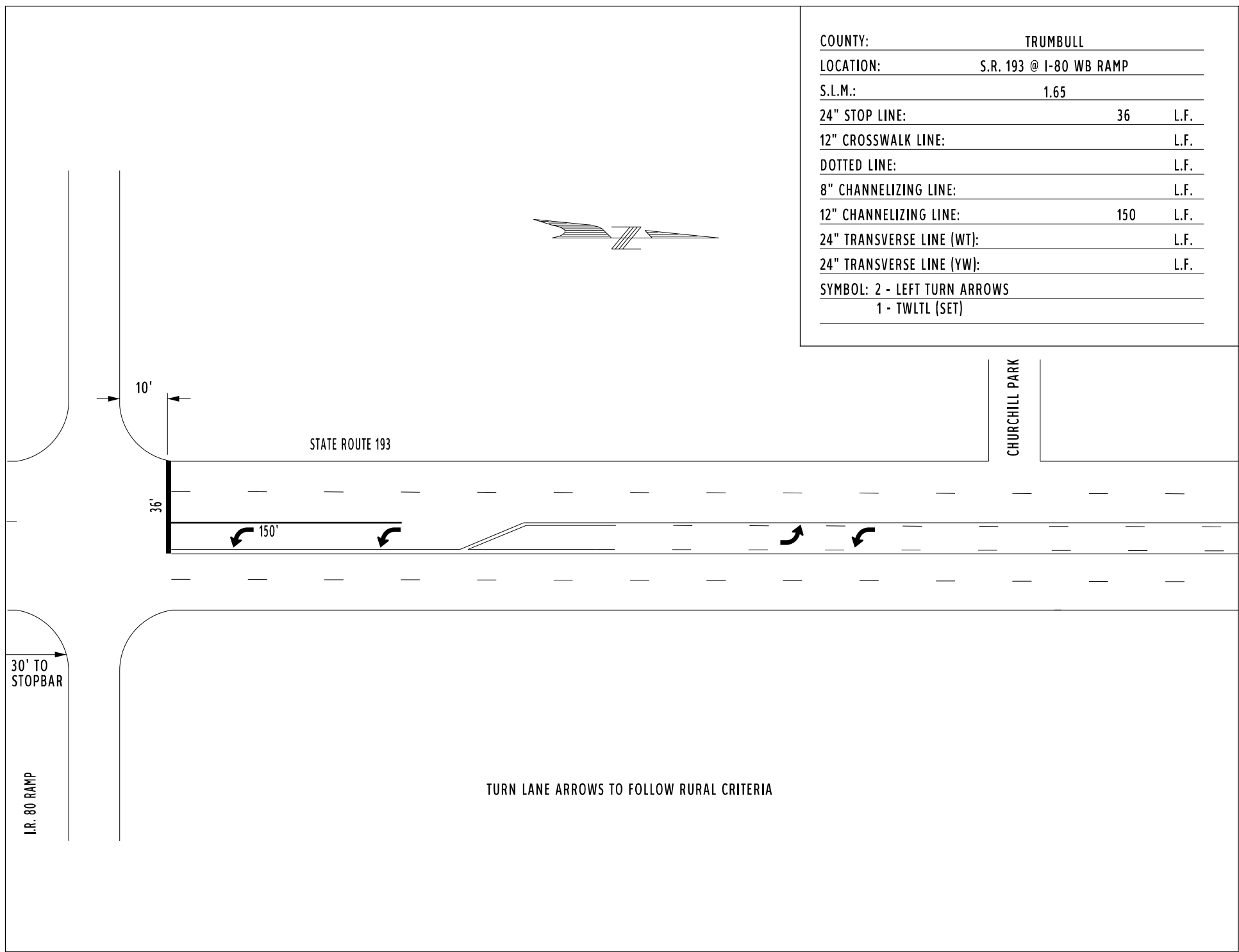
220'

35'



TURN LANE ARROWS TO FOLLOW RURAL CRITERIA

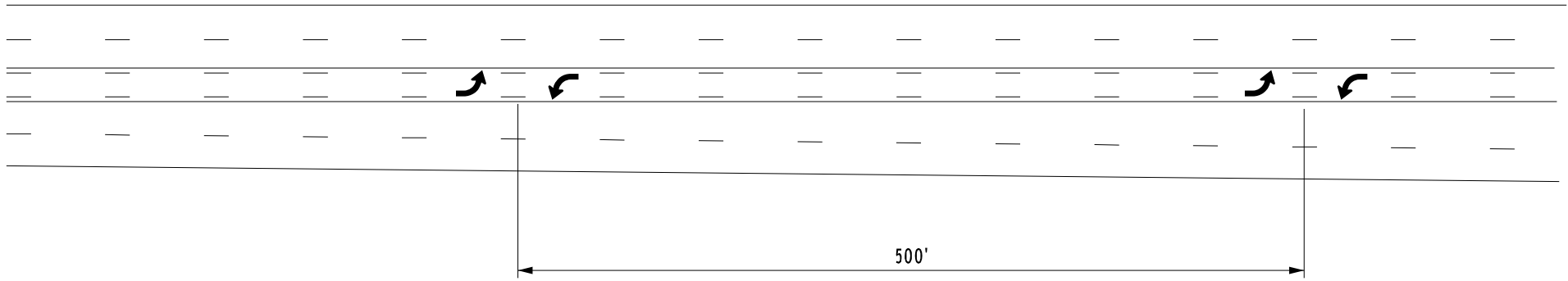
COUNTY:	TRUMBULL	
LOCATION:	S.R. 193 @ I-80 WB RAMP	
S.L.M.:	1.65	
24" STOP LINE:	36	L.F.
12" CROSSWALK LINE:		L.F.
DOTTED LINE:		L.F.
8" CHANNELIZING LINE:		L.F.
12" CHANNELIZING LINE:	150	L.F.
24" TRANSVERSE LINE (WT):		L.F.
24" TRANSVERSE LINE (YW):		L.F.
SYMBOL:	2 - LEFT TURN ARROWS	
	1 - TWLTL (SET)	

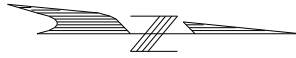


TURN LANE ARROWS TO FOLLOW RURAL CRITERIA



COUNTY:	TRUMBULL	
LOCATION:	S.R. 193 @ TWO-WAY LEFT	
S.L.M.:	1.70 - 1.90	L.F.
24" STOP LINE:		L.F.
12" CROSSWALK LINE:		L.F.
DOTTED LINE:		L.F.
8" CHANNELIZING LINE:		L.F.
12" CHANNELIZING LINE:		L.F.
24" TRANSVERSE LINE (WT):		L.F.
24" TRANSVERSE LINE (YW):		L.F.
SYMBOL: 2 - TWLTL (SET)		





COUNTY:	TRUMBULL		
LOCATION:	S.R. 82 @ S.R. 304 (SOUTH)		
S.L.M.:	1.973		
24" STOP LINE:	68	L.F.	
12" CROSSWALK LINE:		L.F.	
DOTTED LINE:		L.F.	
8" CHANNELIZING LINE:		L.F.	
12" CHANNELIZING LINE:	430	L.F.	
24" TRANSVERSE LINE (WT):		L.F.	
24" TRANSVERSE LINE (YW):		L.F.	
SYMBOL: 2 - LEFT TURN ARROWS			
2 - RIGHT TURN ARROWS			

TURN LANE ARROWS TO FOLLOW RURAL CRITERIA

