

STATE OF OHIO
DEPARTMENT OF HIGHWAYS
TUS-8-(26.28-30.83)
TUSCARAWAS COUNTY

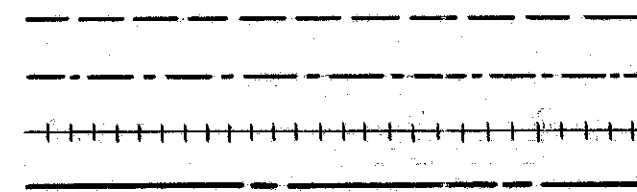
DOVER, FAIRFIELD & SANDY TOWNSHIPS & VILLAGE OF MINERAL CITY

FED. RD. DIVISION	STATE	PROJECT	
2	OHIO	STATE	

(1/4)
TUS-8-(26.28-30.83)

CONVENTIONAL SIGNS

TOWNSHIP LINE
CORPORATION LINE
RAILROAD
COUNTY LINE



INDEX OF SHEETS

TITLE SHEET
TYPICAL SECTIONS
DETAILS AND GENERAL NOTES
SUMMARY OF QUANTITIES

1
2
3 & 4
4

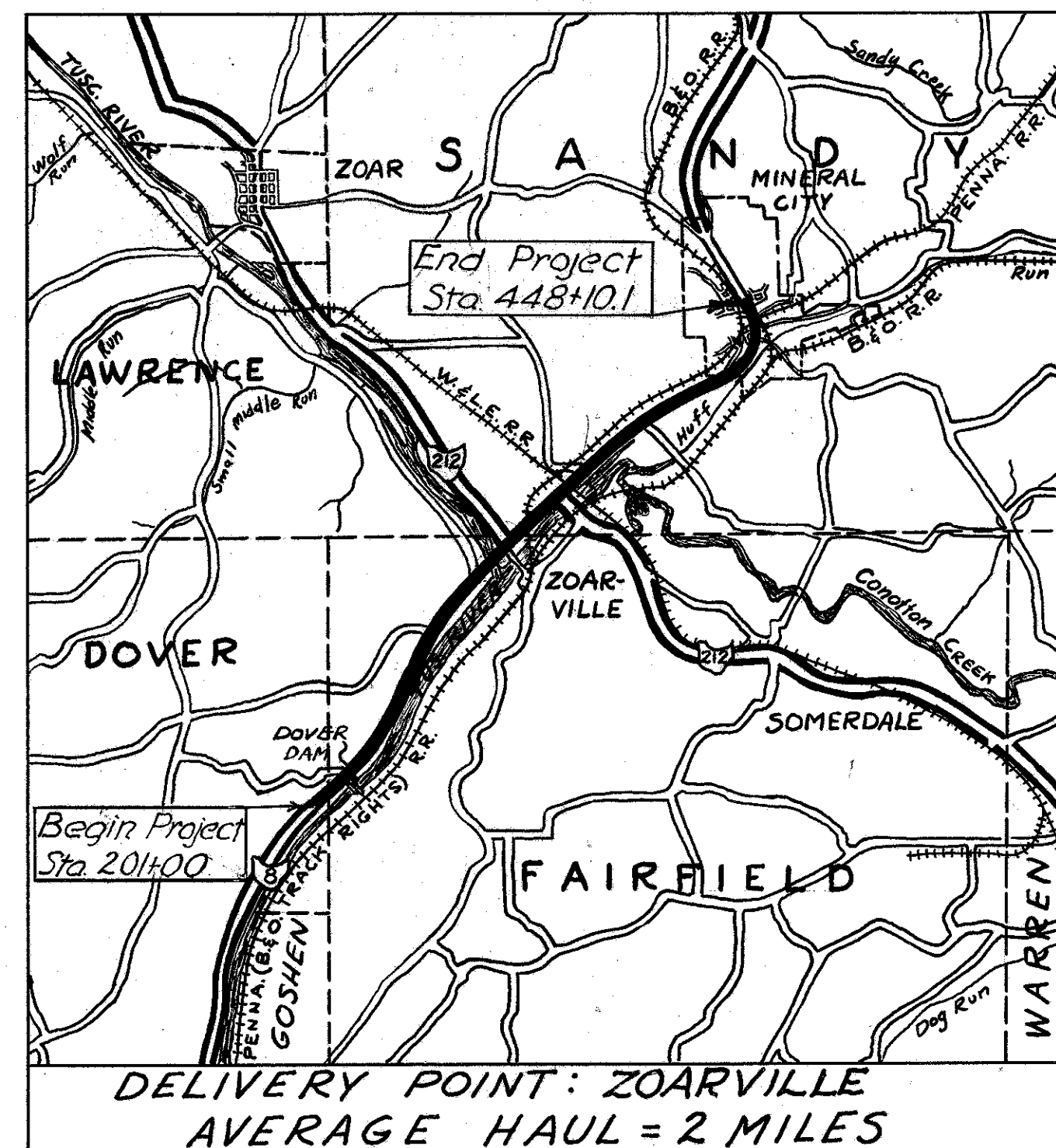
LINE DATA

BEGIN PROJECT STA. 201+00
END PROJECT STA. 448+10.1
GROSS LENGTH OF PROJECT 24,710.1 LIN. FT.

CORRECTIONS FOR EQUATIONS
STA. 253+03.30 BACK= STA 253+00 AHEAD +3.30 LIN. FT.
STA. 301+07.05 BACK= STA 301+00 AHEAD +7.05 " "
STA. 394+07.82 BACK= STA 395+00 AHEAD -92.18 " "

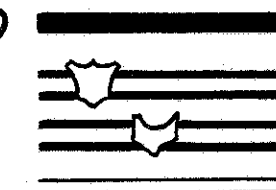
DEDUCTIONS FOR RAILROADS
STA. 439+62.7 TO STA. 439+88.7 -26.0 LIN. FT.
STA. 446+15.5 TO STA. 446+36.5 -21.0 " "

NET LENGTH OF PROJECT AND WORK = 24,581.27 LIN. FT. OR 4.655 MILES



LOCATION PLAN
Scale 1"=1 Mile

PORTION TO BE IMPROVED
FEDERAL HIGHWAYS
STATE HIGHWAYS
OTHER ROADS



The standard specifications of The State of Ohio, Department of Highways, including changes and supplemental specifications listed in the proposal shall govern this improvement.

The right of way for this improvement will be provided by The State of Ohio.

I hereby approve these plans and declare that the making of this improvement will not require the closing to traffic of the highway and that provisions for maintenance and safety of traffic will be as set forth in these plans and estimates.

Approved Dean Reber
Date 12-28-55 Division Deputy Director

Approved John J. Neven
Date 1-31-56 Deputy Director of Planning and Programming

Approved Richard Ditt
Date 1-27-56 Engineer of Bridges

Approved E. J. [Signature]
Date 1-30-56 Engineer of Location and Design

Approved W. H. [Signature]
Date 1-30-56 Deputy Director of Design and Construction

Approved L. F. [Signature]
Date 1-30-56 First Assistant Director

Approved [Signature]
Date 2-3-56 Director of Highways

FILE N ^o	TUS-8-(26.28-30.83)
DATE OF LETTING	195
CONTRACT N ^o	

STANDARD DRAWINGS	
T-35	1-2-56

SUPPLEMENTAL SPECIFICATIONS	
M-110.27	9-9-52
T-135	1-25-56

CONSTRUCTION
BUREAU
MARCH 1956
GROUP D. H. [Signature]

TYPICAL SECTIONS

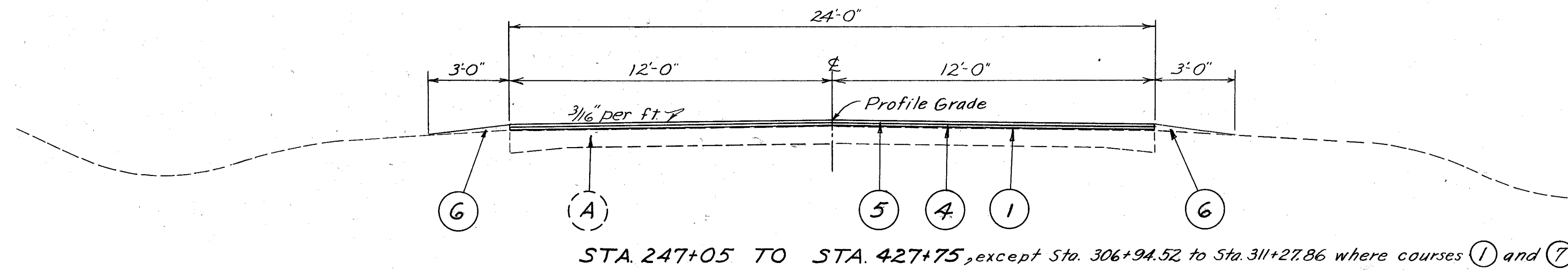
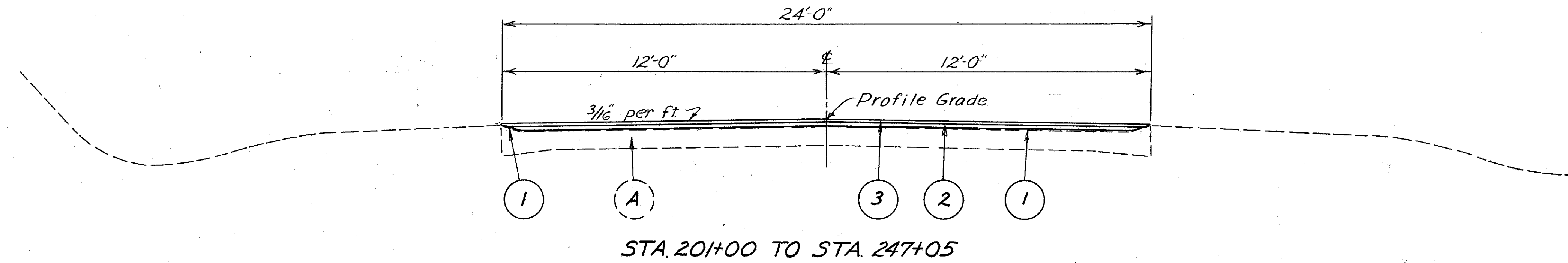
TYPE T-35

SCALE $\frac{3}{8}'' = 1'-0''$

FED. RD. DIVISION	STATE	PROJECT	
2	OHIO		

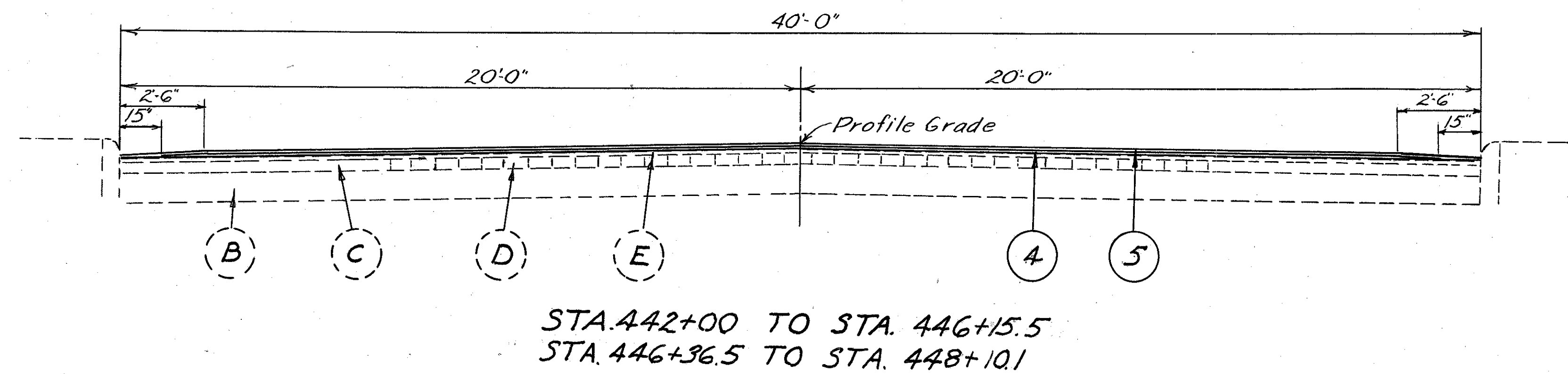
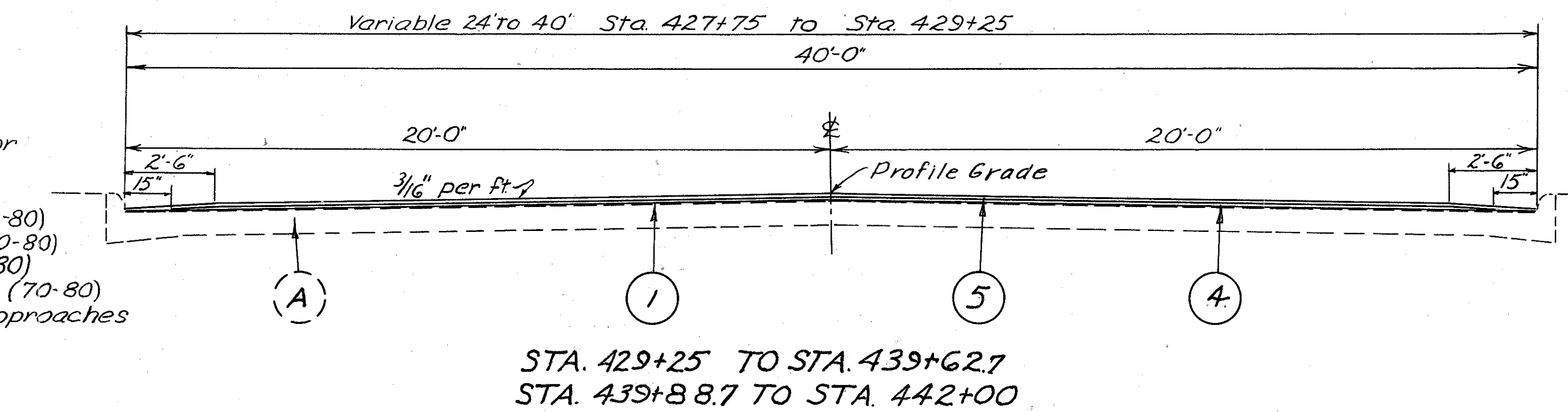
2
4

TUS-8- (26.28-30.83)



- KEY -

- (A) Existing 10"-8"-8"-10" Concrete Pavement
- (B) Existing Gravel Base
- (C) Existing Bituminous Base
- (D) Existing Brick Pavement
- (E) Existing Bituminous Surface Course
- (1) Item T-30 Bituminous Tack Coat, Sec. M-5.5 MS-2 or RS-1 or Sec. M-5.2 RC-1 or RC-2 applied at the rate of 0.1 gal. per sq.yd. See Note in Proposal
- (2) Item B-35 $\frac{1}{2}$ " Min. Asphaltic Concrete Leveling Course (70-80)
- (3) Item T-35 $\frac{1}{2}$ " Asphaltic Concrete Surface Course, Type A (70-80)
- (4) Item B-35 $\frac{1}{4}$ " Min. Asphaltic Concrete Leveling Course (70-80)
- (5) Item T-35 $\frac{1}{4}$ " Asphaltic Concrete Surface Course Type A (70-80)
- (6) Item I-18 Stabilized Crushed Aggregate Shoulders & Approaches
- (7) Item T-135 $\frac{1}{2}$ " Asphaltic Concrete Surface Course



PAVEMENT CALCULATIONS

FED. RD. DIVISION	STATE	PROJECT	
2	OHIO		3 4

TUS-8-(26.28-30.83)

24' PAVEMENT WITH EDGE CURB
Sta. 201+00 to Sta. 247+05 4605.0 Lin. Ft.

24' PAVEMENT WITHOUT EDGE CURB
Sta. 247+05 to Sta. 306+94.52 5,989.52 Lin. Ft.
Sta. 311+27.86 to Sta. 427+75 11,647.14 " "
Gross Length 17,636.66 Lin. Ft.
Corrections for Equations
Sta. 253+03.30 Back = 253+00 Ahead +3.30 Lin. Ft.
Sta. 301+07.05 Back = 301+00 Ahead +7.05 " "
Sta. 394+07.82 Back = 395+00 Ahead -92.18 " "
Net Length 24' Pvm't. without edge curb 17,554.83 Lin. Ft.

26' PAVEMENT (ON BRIDGE)
Sta. 306+94.52 to Sta. 311+27.86 433.34 Lin. Ft.

32' AVERAGE WIDTH PAVEMENT (TRANSITION)
Sta. 427+75 to Sta. 429+25 150.00 Lin. Ft.

40' CONCRETE PAVEMENT
Sta. 429+25 to Sta. 442+00 1275.00 Lin. Ft.
Deduct for Railroad 439+62.7- 439+88.7 26.00 " "
Net Length 40' Conc. Pvm't. 1249.00 Lin. Ft.

40' BITUMINOUS PAVEMENT
Sta. 442+00 to Sta. 448+10.10 610.10 Lin. Ft.
Deduct for Railroad 446+15.5- 446+36.5 21.00 " "
Net Length 40' Bit. Pvm't. 589.10 Lin. Ft.

ITEM T-30 BITUMINOUS TACK COAT
(4605.00+17554.83) x 24 ÷ 9 59,092.88 Sq. Yds.
433.34 x 26 ÷ 9 1251.87 " "
150.00 x 32 ÷ 9 533.33 " "
1249.00 x 40 ÷ 9 5551.11 " "
Total Area 66,429.19 Sq. Yds.
66,429.19 x 0.10 6643 Gals.

ITEM B-35 ASPHALTIC CONCRETE LEVELING COURSE
4605.00 x 24 x 0.125 ÷ 27 511.7 Cu. Yds.
(17554.83+72.0) x 24 x 0.1042 ÷ 27 1619.3 " "
150.00 x 32 x 0.1042 ÷ 27 18.5 " "
(1249.00+589.10) x 37.5 x 0.1042 ÷ 27 266.0 " "
Extra Leveling 4.656 x 225 1047.6 " "
Total B-35 Leveling 3463.1 Cu. Yds.

ITEM T-35 ASPHALTIC CONCRETE SURFACE COURSE
4605.00 x 24 x 0.125 ÷ 27 511.7 Cu. Yds.
17554.83 x 24 x 0.1042 ÷ 27 1626.0 " "
150.00 x 32 x 0.1042 ÷ 27 18.5 " "
(1249.00+589.10) x 40 x 0.1042 ÷ 27 283.7 " "
Feathering, Approaches & Project Termini 15.5 " "
Total T-35 Surface 2455.4 Cu. Yds.

ITEM I-18 STABILIZED SHOULDERS
Estimated 650 Cu. Yds.

* See Note "Resurfacing at Railroad Underpasses"

ITEM T-135 ASPHALTIC CONCRETE SURFACE COURSE
433.34 x 26 x 0.0521 ÷ 27 21.7 Cu. Yds.
* Includes 1/8" extra material for existing surface irregularities 22 Cu. Yds.

GENERAL NOTES

TRAFFIC: Traffic shall be maintained at all times. The length of one way traffic zones shall be kept to a minimum consistent with the requirements of Sec. T-35.23.

The item of "Maintaining Traffic" shall include furnishing lights, all signs, barricades and watchmen according to requirements of Sec. G-707, "Barricades, Danger and Warning Signs," to secure the flow of traffic twenty-four (24) hours daily.

PROFILE: The profile of the proposed surface shall be approx. 2 1/2 inches above that of the existing pavement, except from 201+00 to 247+05 where it will be approx. 3 inches.

EXTRA LEVELING MATERIAL: The asphaltic concrete leveling course thickness shall be maintained by the use of extra leveling material where necessary.

FILLING MAJOR DEPRESSIONS: Major depressions in existing pavement shall be filled and compacted with bituminous concrete leveling material in advance of placing the regular leveling course. These depressions shall be filled in layers not to exceed 3 inches in depth when compacted.

FEATHERING: The new surface shall be feathered to meet the existing pavement at the beginning and end of the project and at railroad crossings as directed by the Engineer.

CONCRETE BASE: Concrete base may be hard finished in accordance with Sec. T-71.211.

PENNA RAILROAD GRADE CROSSING: The Penna R.R. Co. has agreed to raise their tracks at the crossing at Sta. 439+62.7. The Project Engineer shall see that these tracks are raised prior to the placing of any asphaltic concrete in this area.

ITEM I-18: Compaction of the subgrade under the crushed aggregate shoulder as specified under Sec. I-18.03 is hereby waived on this project.

ITEM-T-30 TACK COAT: This item shall not be applied to the existing bridge wearing course more than 24 hours prior to placement of Item T-135.

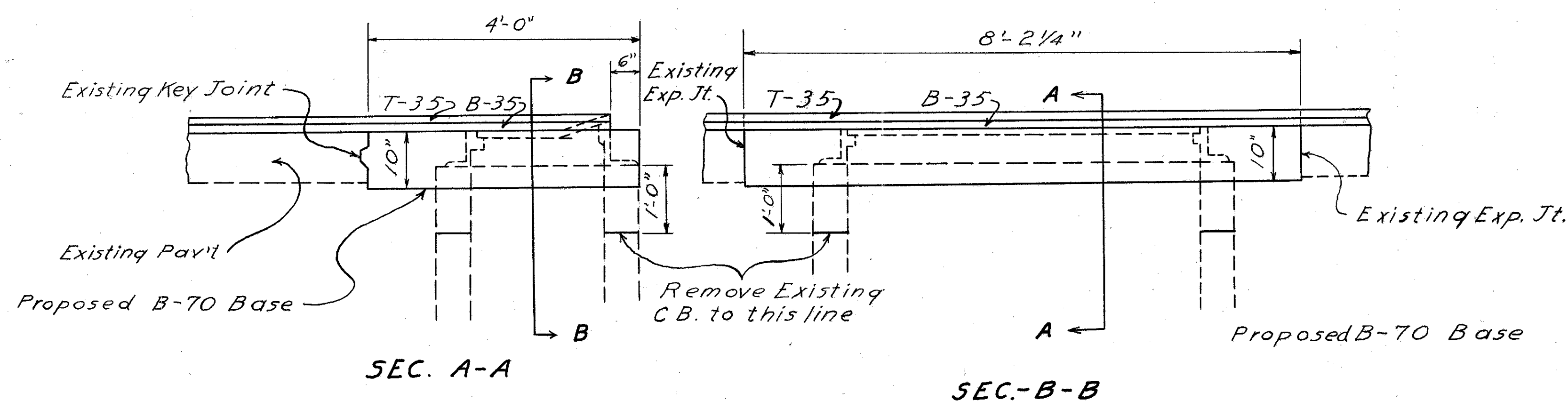
ALIGNMENT AND GRADE: The existing alignment and grade shall be maintained on this project as indicated on the plans on file in the office of the State of Ohio, Department of Highways, New Philadelphia, Ohio. Said plans are recorded as Tuscarawas Co. SH. 70 Sec. A'P, D & Mineral City 'P', F.A.P. 260-A(2), 520-C(1) & 520-A(2), dated 1941.

STATIONING: The stationing increases from south to north on the project. Sta. 201+00 is the beginning of the project and is located approximately 3.78 miles north of the east corporation line of Dover. Sta. 448+10.1 is the end of the project and is located in the village of Mineral City approximately 0.64 miles north of the south corporation line.

STORAGE OF CASTINGS: All of the castings from the abandoned catch basins shall be hauled to the State Highway Garage in New Philadelphia and stored by the Contractor as directed by the Engineer. The cost of hauling and storing of the castings shall be included in the price bid per each for Catch Basins Abandoned as per plan, Item I-16.

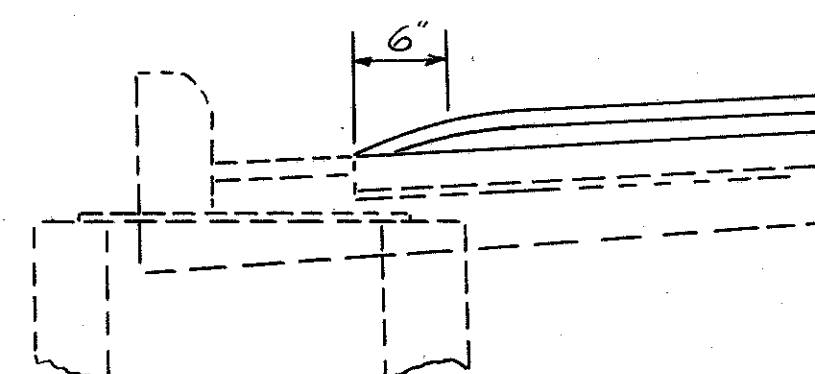
SURFACING EXISTING BRIDGE: Only the 1/2 T-135 surface course shall be carried across the bridge from Sta. 306+94.52 to Sta. 311+27.86. There are five (5) expansion joints on the structure, which shall be raised in accordance with detail shown on Std. Drwg. T-35. All material and labor required to raise the joints shall be included in the lump sum bid for Item S-9 "Structural Expansion Joints," as per plan.

RESURFACING AT RAILROAD UNDERPASSES: Since the vertical clearance at Penna. R.R. underpass is 13.78', only the 1 1/4 T-35 Asphaltic Concrete Surface Course shall be carried thru the underpass. The B-35 Asphaltic Concrete Leveling Course shall be omitted from Sta. 327+04.3 to Sta. 327+76.3. The vertical clearance at the W&LE R.R. underpass at Sta. 348+85.4 is 14.38'. Both courses of asphaltic concrete shall be carried thru this structure.



DETAIL OF PAVING OVER EXISTING 9-A CATCH BASINS

NOTE: 9-AC.Bs. in existing pavement shall be abandoned in accordance with Item I-16, except that the walls shall be removed to the depth shown hereon, and that portion of the pavement blocked out around the basin (8'-2 1/4" x 3'-6 1/2") shall be removed and disposed of. Cost of this pavement removal shall be included in the price bid for "Catch Basins Abandoned." All precautions shall be taken to prevent damage to adjacent pavement. Concrete Base Course, Item B-70, shall be placed as shown. Any excavation necessary to complete the base shall be included in the price bid for "Concrete Base Course."



PAVEMENT DETAIL AT CURB INLET

ABANDON CATCH BASINS AND REPLACE BASE

STATION	SIDE	CATCH BASIN NO. 9A EACH	CONC. BASE SQ. YDS.
201+03	Lt&Rt	2	7.4
204+00	Lt&Rt	2	7.4
207+50	Lt&Rt	2	7.4
211+00	Lt&Rt	2	7.4
214+00	Lt&Rt	2	7.4
217+00	Lt&Rt	2	7.4
220+50	Lt&Rt	2	7.4
224+00	Lt&Rt	2	7.4
226+94	Lt.	1	3.7
232+50	Lt.	1	3.7
235+00	Lt.	1	3.7
237+50	Lt.	1	3.7
240+00	Lt.	1	3.7
242+50	Lt.	1	3.7
244+50	Lt.	1	3.7
247+00	Lt.	1	3.7
427+79.1	Lt.	1	3.7
TOTAL		25	92.5

SUMMARY OF QUANTITIES

ITEM	QUANTITY	UNIT	
S-9	Lump	Lump	Structural Expansion Joints as per plan.
I-16	25	Each	Catch Basins Abandoned, as per plan
I-18	650	Cu. Yds.	Stabilized Crushed Aggregate Shoulders & Approaches
B-70	93	Sq. Yds.	10" Portland Cement Concrete Base Course, as per plan
T-30	6643	Gals.	Bituminous Tack Coat as per plan
B-35	3463	Cu. Yds.	Asphaltic Concrete Leveling Course (70-80)
T-35	2456	Cu. Yds.	Asphaltic Concrete Surface Course, Type "A" (70-80)
T-135	22	Cu. Yds.	Asphaltic Concrete Surface Course
	Lump	Lump	Maintaining Traffic, including Lights, Signs, Barricades and Watchmen, Twenty-four (24) hours daily