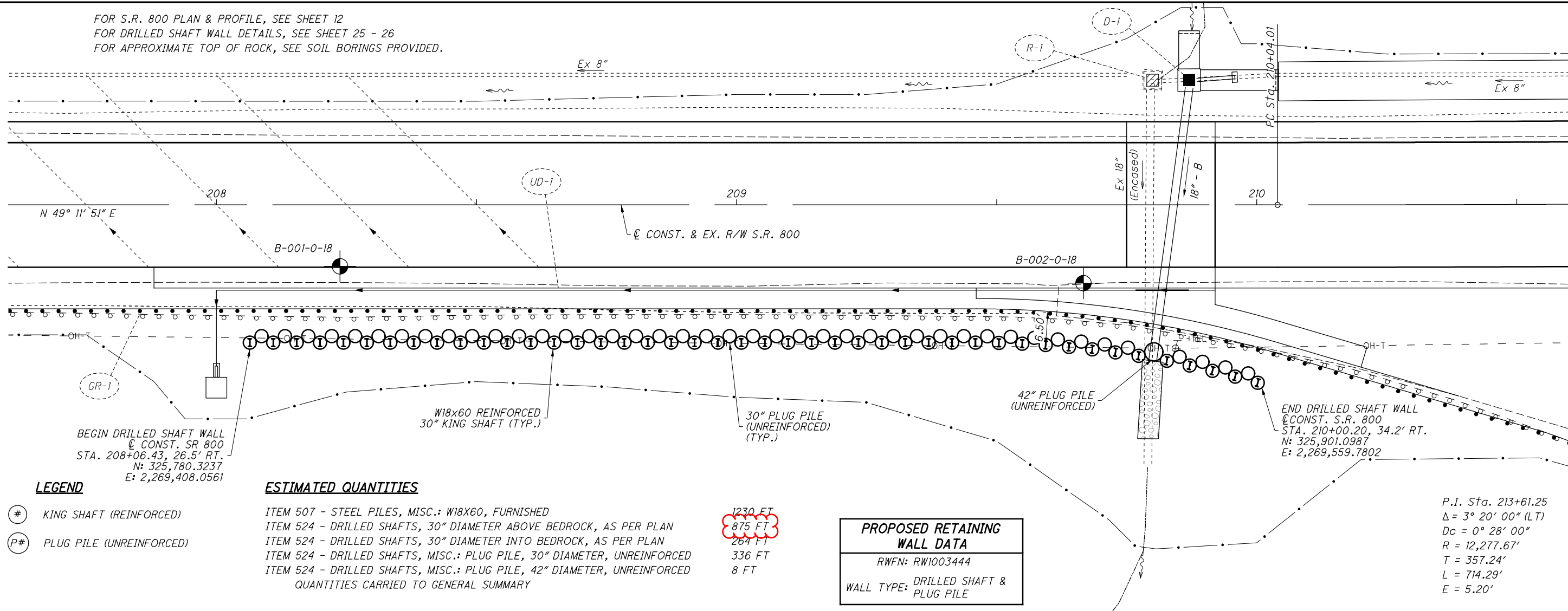


I:\Project+Data\06997\Design\Roadway\Sheets\06997_G0002.dgn_Sheet 10/1/2020 11:46:12 AM shorr\isp

Table with columns: SHEET NUM. (3, 5, 6, 11, 13, 24), PART (01/STR/OT), ITEM, ITEM EXT, GRAND TOTAL, UNIT, DESCRIPTION (PAVEMENT, TRAFFIC CONTROL, RETAINING WALLS, MAINTENANCE OF TRAFFIC, INCIDENTALS), and SEE SHEET NO. (3, 23, 5).

Vertical sidebar with: CALCULATED SAH CHECKED DAH, GENERAL SUMMARY, TUS-800-26.67, and a circled page number 10/26.

FOR S.R. 800 PLAN & PROFILE, SEE SHEET 12
 FOR DRILLED SHAFT WALL DETAILS, SEE SHEET 25 - 26
 FOR APPROXIMATE TOP OF ROCK, SEE SOIL BORINGS PROVIDED.



DRILLED SHAFT WALL PLAN AND PROFILE
 STA. 208+06.43 TO STA 210+00.20

TUS-800-26.67

24
 26

N 49° 11' 51" E

CONST. & EX. R/W S.R. 800

BEGIN DRILLED SHAFT WALL
 @ CONST. SR 800
 STA. 208+06.43, 26.5' RT.
 N: 325,780.3237
 E: 2,269,408.0561

W18x60 REINFORCED
 30" KING SHAFT (TYP.)

30" PLUG PILE
 (UNREINFORCED)
 (TYP.)

42" PLUG PILE
 (UNREINFORCED)

END DRILLED SHAFT WALL
 @ CONST. S.R. 800
 STA. 210+00.20, 34.2' RT.
 N: 325,901.0987
 E: 2,269,559.7802

LEGEND

- # KING SHAFT (REINFORCED)
- P# PLUG PILE (UNREINFORCED)

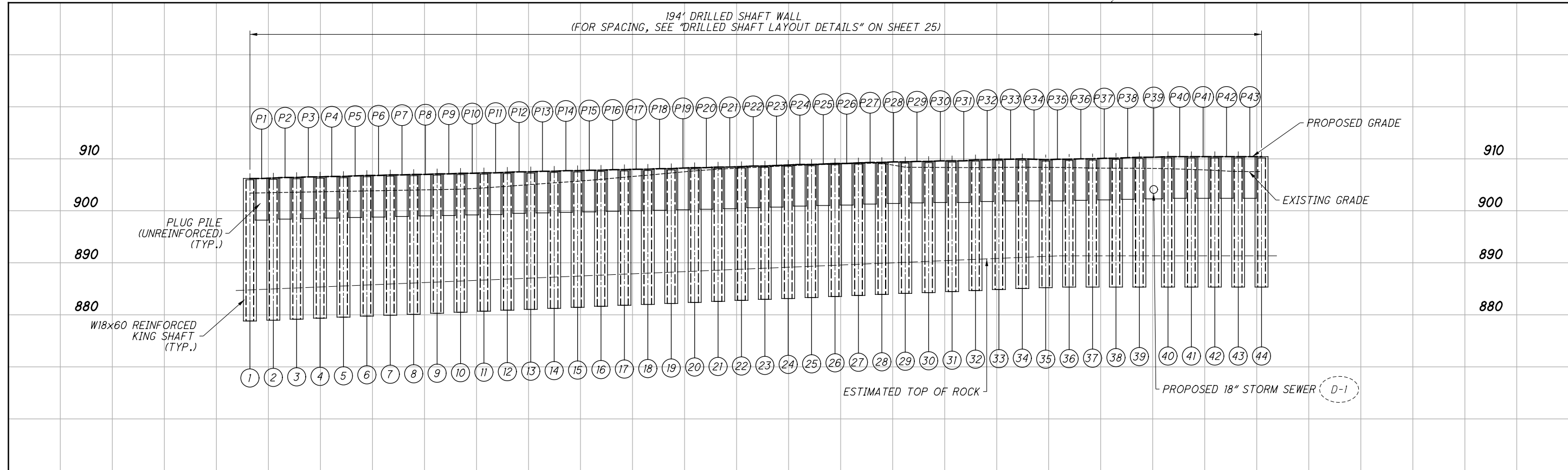
ESTIMATED QUANTITIES

ITEM 507 - STEEL PILES, MISC.: W18X60, FURNISHED
 ITEM 524 - DRILLED SHAFTS, 30" DIAMETER ABOVE BEDROCK, AS PER PLAN
 ITEM 524 - DRILLED SHAFTS, 30" DIAMETER INTO BEDROCK, AS PER PLAN
 ITEM 524 - DRILLED SHAFTS, MISC.: PLUG PILE, 30" DIAMETER, UNREINFORCED
 ITEM 524 - DRILLED SHAFTS, MISC.: PLUG PILE, 42" DIAMETER, UNREINFORCED
 QUANTITIES CARRIED TO GENERAL SUMMARY

1230 FT
 875 FT
 264 FT
 336 FT
 8 FT

PROPOSED RETAINING WALL DATA	
RWFN:	RW1003444
WALL TYPE:	DRILLED SHAFT & PLUG PILE

P.I. Sta. 213+61.25
 $\Delta = 3^\circ 20' 00''$ (LT)
 $D_c = 0^\circ 28' 00''$
 $R = 12,277.67'$
 $T = 357.24'$
 $L = 714.29'$
 $E = 5.20'$



I:\ProjectData\06997\Design\Roadway\Sheets\06997_WP001.dgn Sheet 10/1/2020 11:46:24 AM shorr1sb