

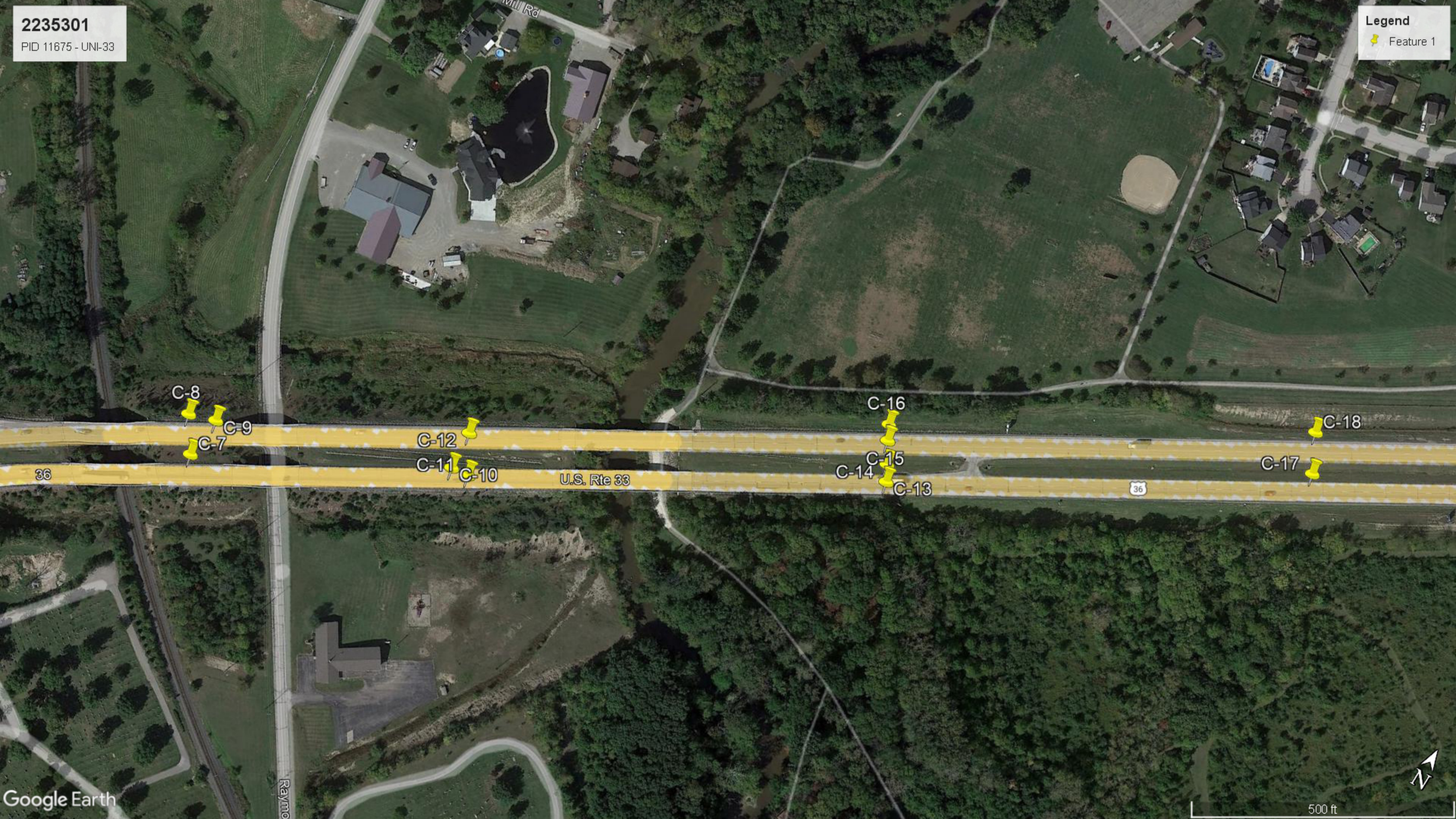
2235301
PID 11675 - UNI-33

Legend
Feature 1



2235301
PID 11675 - UNI-33

Legend
Feature 1



C-8

C-9

C-7

C-12

C-11

C-10

U.S. Rte 33

C-16

C-14

C-15

C-13

C-17

C-18

36

36

Raymo

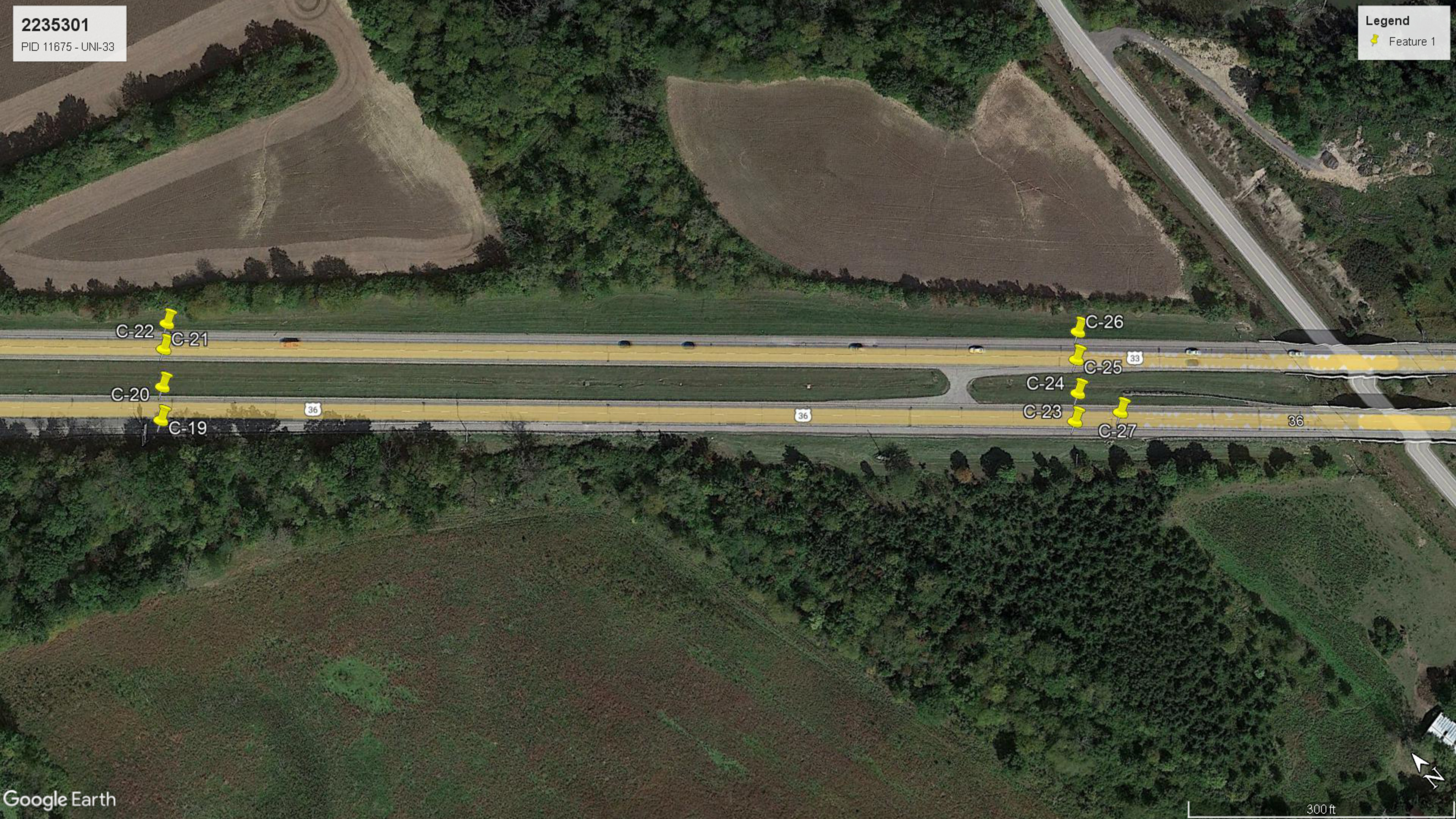
Google Earth

500 ft



2235301
PID 11675 - UNI-33

Legend
Feature 1



2235301
PID 11675 - UNI-33

Legend
Feature 1



C-28
C-32
C-31
C-29
C-30

C-36
C-35
C-34
C-33

U.S. Rte 33

36

33

Wagon Wheel Ln

Wagon Wheel Ln

Surrey Ln



Core Thickness Determination

Toledo

1915 North 12th Street
 Toledo, OH 43604
 Phone: 419-324-2222
 Fax: 419-241-1808

Client:

Bergmann Associates, Inc.
 3410 Briarfield Blvd
 Suite C
 Maumee, OH 43537

Project:

2235302
 Bergmann, Bridge Rehabilitation UNI-33-9.1/11.5
 PID 115675
 Marysville, OH
 Marysville, OH

Technician: Bell, Pierce

On Site Date: 07/25/2022

Core Material: Asphalt

Core Diameter (in.): 4

Structure: Roadway

Pavement Coring for Core Thickness Determination						
--	--	--	--	--	--	--

Core No.	Location	Asphalt Thickness (in.)	Concrete Thickness (in.)	Brick Thickness (in.)	Stone Thickness (in.)	Base Material
1	US 33/36	8	-	-	7.5	Sand
3	US 33/36	8.5	-	-	7	Sand
10	US 33/36	5.75	7.5	-	-	Sand
11	US 33/36	9	-	-	6	Sand
13	US 33/36	10.25	-	-	5.75	Sand
19	US 33/36	7.5	-	-	5.5	Sand
23	US 33/36	10.5	-	-	-	Sand
27	US 33/36	4.75	8	-	-	Sand
29	US 33/36	8.25	-	-	5.5	Sand
33	US 33/36	10.25	-	-	-	Sand

Core Thickness Determination

Toledo
1915 North 12th Street
Toledo, OH 43604
Phone: 419-324-2222
Fax: 419-241-1808

Client:
Bergmann Associates, Inc.
3410 Briarfield Blvd
Suite C
Maumee, OH 43537

Project:
2235302
Bergmann, Bridge Rehabilitation UNI-33-9.1/11.5
PID 115675
Marysville, OH
Marysville, OH

Core No.: 1



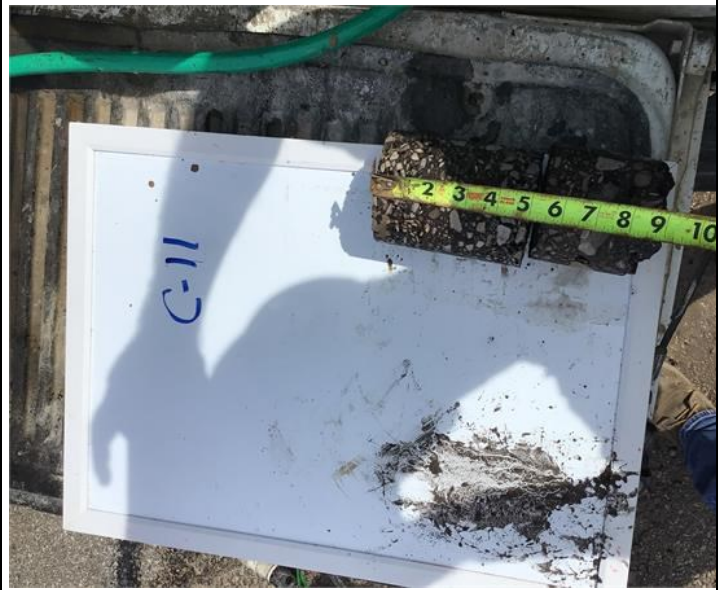
Core No.: 3



Core No.: 10



Core No.: 11



Core Thickness Determination

Toledo
1915 North 12th Street
Toledo, OH 43604
Phone: 419-324-2222
Fax: 419-241-1808

Client:
Bergmann Associates, Inc.
3410 Briarfield Blvd
Suite C
Maumee, OH 43537

Project:
2235302
Bergmann, Bridge Rehabilitation UNI-33-9.1/11.5
PID 115675
Marysville, OH
Marysville, OH

Core No.: 13



Core No.: 19



Core No.: 23



Core No.: 27



Core Thickness Determination

Toledo
1915 North 12th Street
Toledo, OH 43604
Phone: 419-324-2222
Fax: 419-241-1808

Client:
Bergmann Associates, Inc.
3410 Briarfield Blvd
Suite C
Maumee, OH 43537

Project:
2235302
Bergmann, Bridge Rehabilitation UNI-33-9.1/11.5
PID 115675
Marysville, OH
Marysville, OH

Core No.: 29



Core No.: 33



John H. Rust III
Manager, Materials Testing and Inspection
Services

08/15/2022



Core Thickness Determination

Toledo

1915 North 12th Street
 Toledo, OH 43604
 Phone: 419-324-2222
 Fax: 419-241-1808

Client:

Bergmann Associates, Inc.
 3410 Briarfield Blvd
 Suite C
 Maumee, OH 43537

Project:

2235302
 Bergmann, Bridge Rehabilitation UNI-33-9.1/11.5
 PID 115675
 Marysville, OH
 Marysville, OH

Technician: Bell, Pierce

On Site Date: 07/26/2022

Core Material: Asphalt

Core Diameter (in.): 4

Structure: Roadway

Pavement Coring for Core Thickness Determination						
Core No.	Location	Asphalt Thickness (in.)	Concrete Thickness (in.)	Brick Thickness (in.)	Stone Thickness (in.)	Base Material
36	US 33/36	6	-	-	-	Sand
32	US 33/36	9	-	-	5.75	Sand
28	US 33/36	5	8.25	-	5.5	Sand
26	US 33/36	7.75	-	-	-	Sand
22	US 33/36	9	-	-	5.0	Sand
18	US 33/36	8	-	-	-	Sand
16	US 33/36	9.25	-	-	6	Sand
9	US 33/36	7	9	-	-	Sand
8	US 33/36	7	-	-	5.5	Sand
6	US 33/36	8.25	-	-	-	Sand

Core Thickness Determination

Toledo
1915 North 12th Street
Toledo, OH 43604
Phone: 419-324-2222
Fax: 419-241-1808

Client:
Bergmann Associates, Inc.
3410 Briarfield Blvd
Suite C
Maumee, OH 43537

Project:
2235302
Bergmann, Bridge Rehabilitation UNI-33-9.1/11.5
PID 115675
Marysville, OH
Marysville, OH

Core No.: 36



Core No.: 32



Core No.: 28



Core No.: 26



Core Thickness Determination

Toledo

1915 North 12th Street
Toledo, OH 43604
Phone: 419-324-2222
Fax: 419-241-1808

Client:

Bergmann Associates, Inc.
3410 Briarfield Blvd
Suite C
Maumee, OH 43537

Project:

2235302
Bergmann, Bridge Rehabilitation UNI-33-9.1/11.5
PID 115675
Marysville, OH
Marysville, OH

Core No.: 22



Core No.: 18



Core No.: 16



Core No.: 9

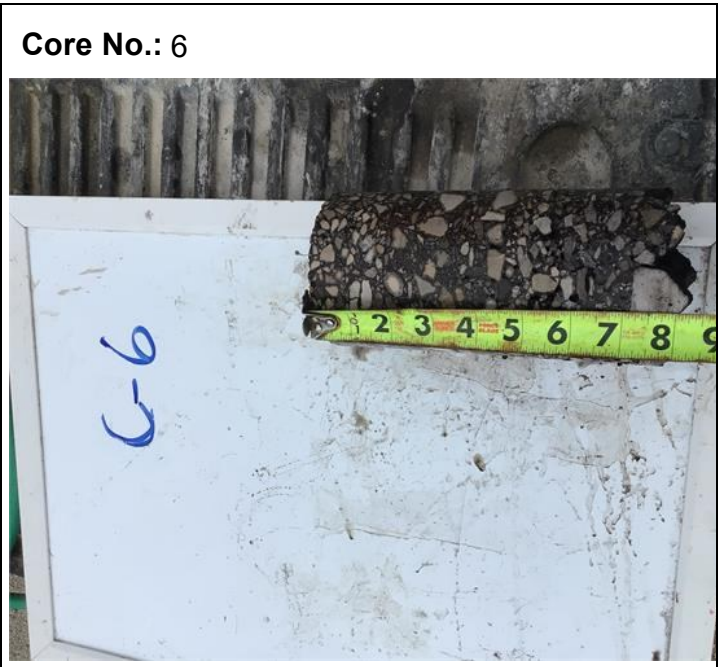
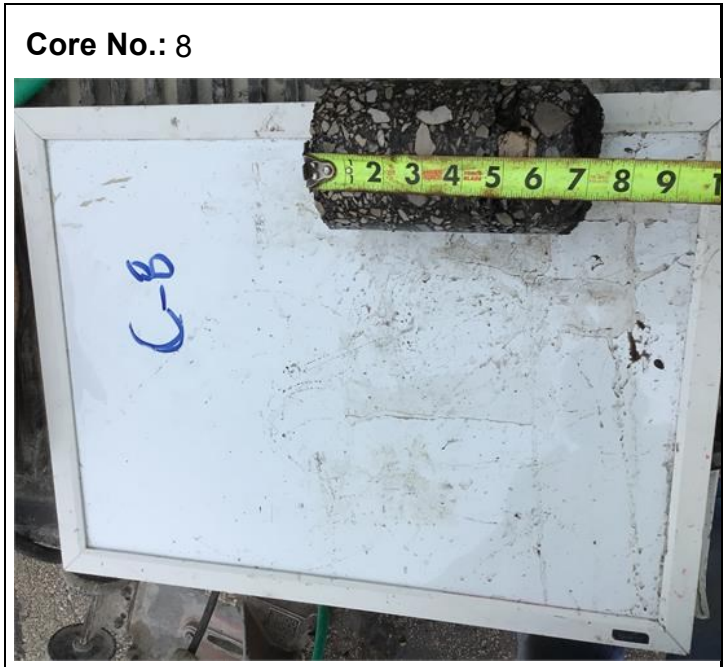


Core Thickness Determination

Toledo
1915 North 12th Street
Toledo, OH 43604
Phone: 419-324-2222
Fax: 419-241-1808

Client:
Bergmann Associates, Inc.
3410 Briarfield Blvd
Suite C
Maumee, OH 43537

Project:
2235302
Bergmann, Bridge Rehabilitation UNI-33-9.1/11.5
PID 115675
Marysville, OH
Marysville, OH



John H. Rust III
Manager, Materials Testing and Inspection
Services

08/15/2022



Core Thickness Determination

Toledo

1915 North 12th Street
 Toledo, OH 43604
 Phone: 419-324-2222
 Fax: 419-241-1808

Client:

Bergmann Associates, Inc.
 3410 Briarfield Blvd
 Suite C
 Maumee, OH 43537

Project:

2235302
 Bergmann, Bridge Rehabilitation UNI-33-9.1/11.5
 PID 115675
 Marysville, OH
 Marysville, OH

Technician: Bell, Pierce

On Site Date: 07/28/2022

Core Material: Asphalt

Core Diameter (in.): 4

Structure: Roadway

Pavement Coring for Core Thickness Determination						
--	--	--	--	--	--	--

Core No.	Location	Asphalt Thickness (in.)	Concrete Thickness (in.)	Brick Thickness (in.)	Stone Thickness (in.)	Base Material
4	US 33/36	9.75	-	1	5	Sand
7	US 33/36	5	9	-	-	Sand
14	US 33/36	4.75	9.25	-	6	Sand
17	US 33/36	5	8.5	-	5.5	Sand
20	US 33/36	5.5	8.5	-	-	Sand
24	US 33/36	10.25	-	-	6	Sand
30	US 33/36	5	8	-	-	Sand
34	US 33/36	4.75	9	-	5.75	Sand

Core Thickness Determination

Toledo
1915 North 12th Street
Toledo, OH 43604
Phone: 419-324-2222
Fax: 419-241-1808

Client:
Bergmann Associates, Inc.
3410 Briarfield Blvd
Suite C
Maumee, OH 43537

Project:
2235302
Bergmann, Bridge Rehabilitation UNI-33-9.1/11.5
PID 115675
Marysville, OH
Marysville, OH

Core No.: 4



Core No.: 7



Core No.: 14



Core No.: 17



Core Thickness Determination

Toledo
1915 North 12th Street
Toledo, OH 43604
Phone: 419-324-2222
Fax: 419-241-1808

Client:
Bergmann Associates, Inc.
3410 Briarfield Blvd
Suite C
Maumee, OH 43537

Project:
2235302
Bergmann, Bridge Rehabilitation UNI-33-9.1/11.5
PID 115675
Marysville, OH
Marysville, OH

Core No.: 20



Core No.: 24



Core No.: 30



Core No.: 34





Core Thickness Determination

Toledo

1915 North 12th Street
Toledo, OH 43604
Phone: 419-324-2222
Fax: 419-241-1808

Client:

Bergmann Associates, Inc.
3410 Briarfield Blvd
Suite C
Maumee, OH 43537

Project:

2235302
Bergmann, Bridge Rehabilitation UNI-33-9.1/11.5
PID 115675
Marysville, OH
Marysville, OH

John H. Rust III
Manager, Materials Testing and Inspection
Services

08/15/2022



Core Thickness Determination

Toledo

1915 North 12th Street
 Toledo, OH 43604
 Phone: 419-324-2222
 Fax: 419-241-1808

Client:

Bergmann Associates, Inc.
 3410 Briarfield Blvd
 Suite C
 Maumee, OH 43537

Project:

2235302
 Bergmann, Bridge Rehabilitation UNI-33-9.1/11.5
 PID 115675
 Marysville, OH
 Marysville, OH

Technician: Bell, Pierce

On Site Date: 07/29/2022

Core Material: Asphalt

Core Diameter (in.): 4

Structure: Roadway

Pavement Coring for Core Thickness Determination						
--	--	--	--	--	--	--

Core No.	Location	Asphalt Thickness (in.)	Concrete Thickness (in.)	Brick Thickness (in.)	Stone Thickness (in.)	Base Material
35	US 33/36	11	-	-	6	Sand
31	US 33/36	10.75	-	-	-	Sand
25	US 33/36	10.5	-	-	6	Sand
21	US 33/36	10.5	-	-	-	Sand
15	US 33/36	10	-	-	5	Sand
12	US 33/36	10	-	-	-	Sand
5	US 33/36	10	-	-	5	Sand
2	US 33/36	6.5	10+	-	-	Sand

Core Thickness Determination

Toledo
1915 North 12th Street
Toledo, OH 43604
Phone: 419-324-2222
Fax: 419-241-1808

Client:
Bergmann Associates, Inc.
3410 Briarfield Blvd
Suite C
Maumee, OH 43537

Project:
2235302
Bergmann, Bridge Rehabilitation UNI-33-9.1/11.5
PID 115675
Marysville, OH
Marysville, OH

Core No.: 35



Core No.: 31



Core No.: 25



Core No.: 21



Core Thickness Determination

Toledo
1915 North 12th Street
Toledo, OH 43604
Phone: 419-324-2222
Fax: 419-241-1808

Client:
Bergmann Associates, Inc.
3410 Briarfield Blvd
Suite C
Maumee, OH 43537

Project:
2235302
Bergmann, Bridge Rehabilitation UNI-33-9.1/11.5
PID 115675
Marysville, OH
Marysville, OH

Core No.: 15



Core No.: 12



Core No.: 5



Core No.: 2





Core Thickness Determination

Toledo

1915 North 12th Street
Toledo, OH 43604
Phone: 419-324-2222
Fax: 419-241-1808

Client:

Bergmann Associates, Inc.
3410 Briarfield Blvd
Suite C
Maumee, OH 43537

Project:

2235302
Bergmann, Bridge Rehabilitation UNI-33-9.1/11.5
PID 115675
Marysville, OH
Marysville, OH

A handwritten signature in blue ink, appearing to be 'John H. Rust III', is written over a horizontal line.

John H. Rust III
Manager, Materials Testing and Inspection
Services

08/15/2022