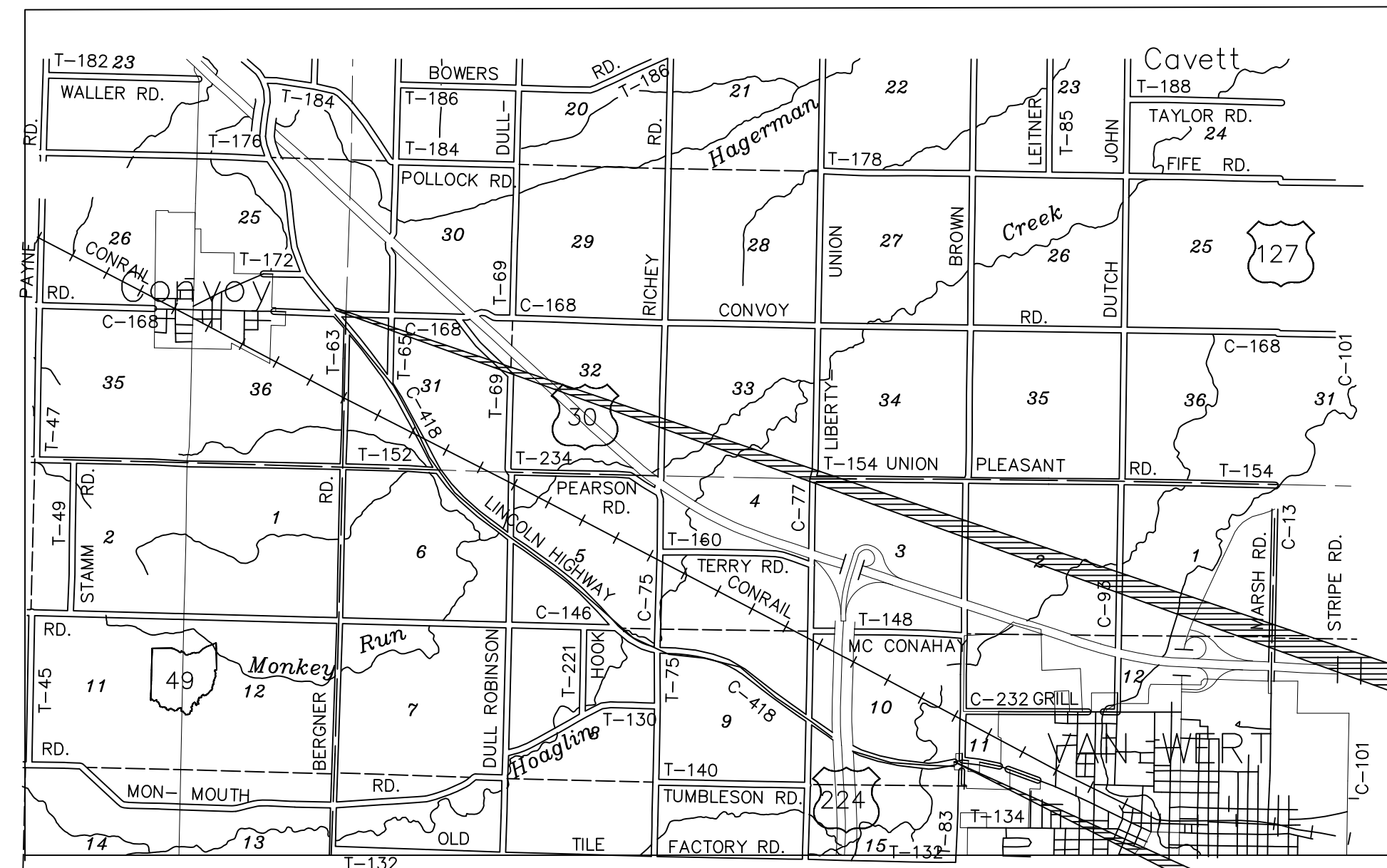


STATE OF OHIO
 DEPARTMENT OF TRANSPORTATION
VAN-CR 418- 2.840-8.139
 TULLY, UNION AND PLEASANT TOWNSHIPS
 VAN WERT COUNTY



DETOUR & LOCATION MAP

LATITUDE: 40°53'20.99" North
 LONGITUDE: 84°39'20.87" West



BEGIN PROJECT
 STA 383+65.46

END PROJECT
 STA 665+81.09

DESIGN DESIGNATION

CURRENT AADT TMS (2021)	3396
DESIGN ADT (2043)	4576
DHV (2043)	458
D (DIRECTIONAL DISTRIBUTION)	55%
T (PERCENT B AND C TRUCKS)	3%
V (DESIGN SPEED)	3R Project
V (LEGAL SPEED)	55 mph & 45 mph

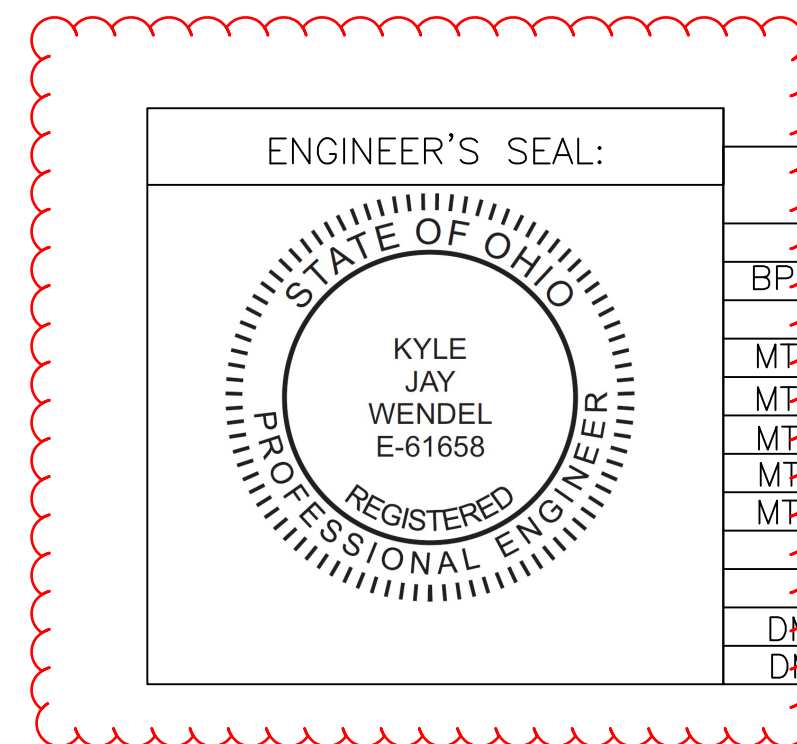
FUNCTIONAL CLASSIFICATION = RURAL MAJOR COLLECTOR

DESIGN EXCEPTIONS: NONE

UNDERGROUND UTILITIES
 Contact Two Working Days
 Before You Dig

OHIO811. 8-1-1. or 1-800-362-2764
 (Non-members must be called directly)

PLANS PREPARED BY:
VAN WERT COUNTY ENGINEER
 1192 GRILL RD
 VAN WERT, OHIO 45891
 PH (419) 238-0210



STANDARD CONSTRUCTION DRAWINGS		SUPPLEMENTAL SPECIFICATIONS	
BP-3.1	01/21/22	TC-65.10	1/17/14
		TC-65.11	7/15/22
		TC-64.10	1/20/23
MP-97.11	1/20/17	TC-41.20	10/18/13
MP-97.12	1/20/17	TC-42.10	10/18/13
MP-99.20	4/19/19	TC-42.20	10/18/13
MP-101.90	7/17/20	TC-52.10	10/18/13
MP-105.10	1/17/20	TC-52.20	1/15/21
DM-4.3	1/15/16		
DM-4.1	7/17/20		

INDEX OF SHEETS

- TITLE SHEET 1
- GENERAL NOTES 2
- TYPICAL SECTIONS 3
- DRIVEWAYS & MAILBOX APPROACHES 4
- SCHEMATIC PLAN 5
- SCHEMATIC PLAN 6
- SCHEMATIC PLAN 7
- TRANSITION DETAIL 8
- TRANSITION DETAIL 9
- TRANSITION DETAIL 10
- INTERSECTION DETAILS 11
- INTERSECTION DETAILS 12
- INTERSECTION DETAILS 13
- PAVEMENT MARKINGS & INTERSECTION SUMMARY 14
- GENERAL SUMMARY 15

PROJECT DESCRIPTION

IMPROVEMENT OF 5.30 MI. OF LINCOLN HIGHWAY IN VAN WERT COUNTY BY RESURFACING.

2023 SPECIFICATIONS

THE STANDARD SPECIFICATIONS OF THE STATE OF OHIO, DEPARTMENT OF TRANSPORTATION, INCLUDING CHANGES AND SUPPLEMENTAL SPECIFICATIONS LISTED IN THE PROPOSAL, SHALL GOVERN THIS IMPROVEMENT.

EARTH DISTURBED AREAS

PROJECT EARTH DISTURBED AREA:	0.0 ACRES
ESTIMATED CONTRACTOR EARTH DISTURBED AREA:	0.0 ACRES
NOTICE OF INTENT EARTH DISTURBED AREA:	N/A (NOI NOT REQUIRED)

I HEREBY APPROVE THESE PLANS AND DECLARE THAT THE MAKING OF THIS IMPROVEMENT WILL NOT REQUIRE THE CLOSING TO TRAFFIC OF THE HIGHWAY AND THAT PROVISIONS FOR THE MAINTENANCE AND SAFETY OF TRAFFIC WILL BE AS SET FORTH ON THE PLANS AND ESTIMATES.

Christopher A. Hughes

Christopher A. Hughes, P.E.
 District 01 Deputy Director

Jack Marchbanks

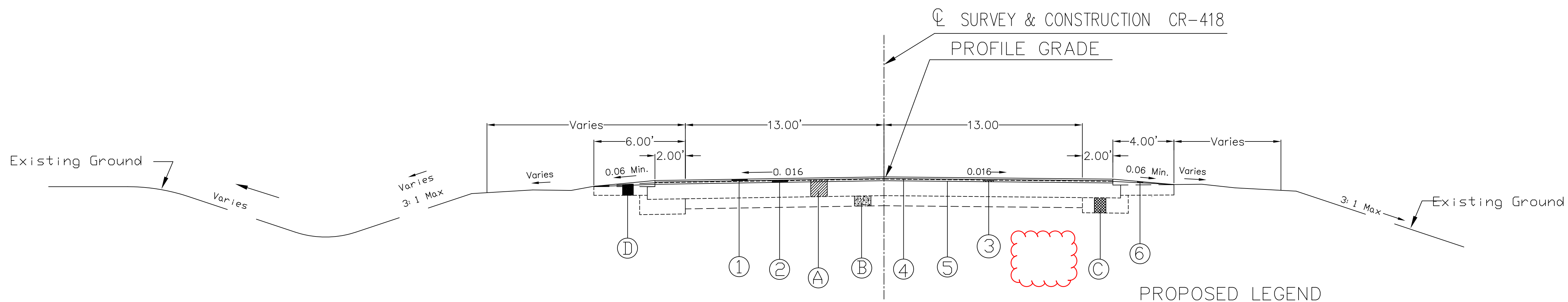
Jack Marchbanks, PhD
 Director, Department of Transportation

FEDERAL PROJECT NUMBER
 E1161621

PID NO.
 101976

RAILROAD INVOLVEMENT
 NONE

VAN-CR418-2.840-8.139

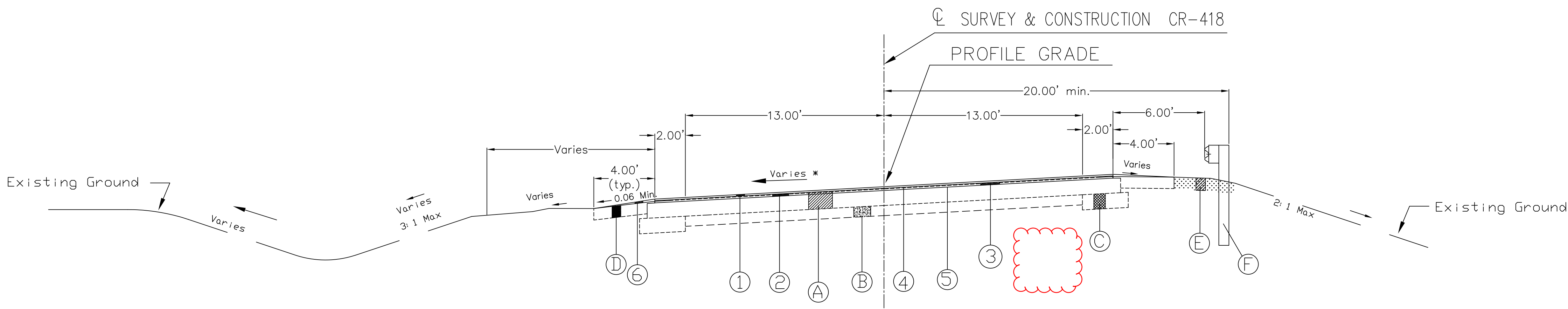


- EXISTING LEGEND**
- (A) 9" to 12" Asphaltic Concrete
 - (B) 7" to 9" Concrete
 - (C) 12" to 14" Compacted Aggregate
 - (D) 8" to 10" Aggregate Shoulder
 - (E) 6" to 8" Dirt and Stone Shoulder
 - (F) Type 5 Guardrail

NORMAL SECTION 1 APPLIES

STA. 385+65.43 to STA. 444+05.96	=	5840.53'
STA. 436+18.07 to STA. 437+29.81 (Suspend Project)	=	-111.74'
Con Rail Railroad		
STA. 474+04.87 to STA. 507+68.50	=	682.02'
STA. 517+48.12 to STA. 533+55.82	=	1607.70'
STA. 550+96.34 to STA. 556+52.59	=	556.25'
STA. 581+99.13 to STA. 618+76.58	=	3677.45'
STA. 643+26.65 to STA. 649+47.90	=	621.25'
STA. 658+93.91 to STA. 662+82.01	=	388.10'
TOTAL	=	13261.56'

- PROPOSED LEGEND**
- ① ITEM 441 1 1/4" ASPHALT CONCRETE SURFACE COURSE TYPE 1, (448) PG64-22
 - ② ITEM 441 1 3/4" ASPHALT CONCRETE INTERMEDIATE COURSE, TYPE 2, (448) PG64-22
 - ③ ITEM 254 1 1/4" PAVEMENT PLANING
 - ④ ITEM 407 TACK COAT FOR INTERMEDIATE COURSE
 - ⑤ ITEM 407 TACK COAT (SEE GENERAL NOTES)
 - ⑥ ITEM 617 SHOULDER PREPARATION, COMPACTED AGGREGATE TYPE 411 AND WATER



SUPERELEVATED SECTION 2 APPLIES

Curve 1 = STA. 384+65.46 to STA. 385+65.43	=	99.97'
Curve 3 = STA. 444+05.96 to STA. 474+04.87	=	2998.91'
Curve 4 = STA. 507+68.50 to STA. 517+48.12	=	979.62'
Curve 5 = STA. 533+55.82 to STA. 550+96.34	=	1740.52'
Curve 6 = STA. 556+52.59 to STA. 581+99.13	=	2546.54'
Curve 8 = STA. 618+76.58 to STA. 643+26.65	=	2450.07'
STA. 620+37.44 to STA. 622+87.44 (Suspend Project)	=	-250'
US Route 224		
Curve 9 = STA. 649+47.90 to STA. 658+93.91	=	946.01'
Curve 10 = STA. 662+82.01 to STA. 665+51.09	=	269.08'
TOTAL	=	11842.10'