

Z:\project\VanWert\VanWert-VAN-VWE-1903LeesonAvenueReconstruction\13907_GG.dwg 11-Dec-23 4:22 PM

SHEET NUM.												PART.			ITEM	ITEM EXT	GRAND TOTAL	UNIT	DESCRIPTION	SEE SHEET NO.
7	8	14	15	16	17	18	19	20	57	114	134	01/S<2/04	02/NFP/43	03/ENH/28						
									ROADWAY											
												LS	LS	LS	201	11000	LS	CLEARING AND GRUBBING	7	
		11,954			181							11,954		181	202	23000	12,135	SY	PAVEMENT REMOVED, ASPHALT	
					1,139									1,139	202	23000	1,139	SY	PAVEMENT REMOVED, CONCRETE	
			15,334	8,559										23,893	202	30000	23,893	SF	WALK REMOVED	
				2,010										2,010	202	30000	2,010	SF	WALK REMOVED, (BRICK)	
			34											34	202	30001	34	SF	WALK REMOVED, AS PER PLAN, (BRICK)	7
				12										12	202	30200	12	FT	STEPS REMOVED	
					168									168	202	32000	168	FT	CURB REMOVED	
				5,557								5,557			202	32500	5,557	FT	CURB AND GUTTER REMOVED	
						1,920	1,421	46				3,387			202	35100	3,387	FT	PIPE REMOVED, 24" AND UNDER	
							217					217			202	35200	217	FT	PIPE REMOVED, OVER 24"	
						1	9	1	10			11	10		202	58000	21	EACH	MANHOLE REMOVED	
						1	26	4				31			202	58100	31	EACH	CATCH BASIN REMOVED	
		110			151						5,858	5,902		217	203	10000	6,119	CY	EXCAVATION	
											298	248		50	203	20000	298	CY	EMBANKMENT	
		11,954	2,150		1,793							14,104		1,793	204	10000	15,897	SY	SUBGRADE COMPACTION	
		3,985	717									4,702			204	13000	4,702	CY	EXCAVATION OF SUBGRADE, 12"	
		3,985	717									4,702			204	30010	4,702	CY	GRANULAR MATERIAL, TYPE B	
5												5			204	45000	5	HOUR	PROOF ROLLING	7
		11,954	2,150									14,104			204	50000	14,104	SY	GEOTEXTILE FABRIC, 712.09, TYPE D	
	LS											LS	LS	LS	607	98200	LS		FENCE, MISC.:CONSTRUCTION FENCING	8
			27,300	16,292										43,592	608	10000	43,592	SF	4" CONCRETE WALK	
			3,772	1,991										5,763	608	52000	5,763	SF	CURB RAMP	
			1									1			623	38500	1	EACH	MONUMENT ASSEMBLY, TYPE C	
			1									1			623	39600	1	EACH	MONUMENT ASSEMBLY RECONSTRUCTED TO GRADE	
											52	52			623	40520	52	EACH	RIGHT-OF-WAY MONUMENT, TYPE B	
												2			SPECIAL	69050350	2	EACH	MAILBOX REMOVED AND RESET	8
									EROSION CONTROL											
1,371														1,371	659	00300	1,371	CY	TOPSOIL	7
12,350														12,350	659	00500	12,350	SY	SEEDING AND MULCHING, CLASS 1	7
618														618	659	14000	618	SY	REPAIR SEEDING AND MULCHING	7
618														618	659	15000	618	SY	INTER-SEEDING	7
1.11														1.11	659	20000	1.11	TON	COMMERCIAL FERTILIZER	7
2.55														2.55	659	31000	2.55	ACRE	LIME	7
35														35	659	35000	35	MGAL	WATER	7
	48													48	659	40000	48	MSF	MOWING	
												LS	LS	LS	832	15000	LS		STORM WATER POLLUTION PREVENTION PLAN	
												LS	LS	LS	832	15002	LS		STORM WATER POLLUTION PREVENTION INSPECTIONS	
												LS	LS	LS	832	15010	LS		STORM WATER POLLUTION PREVENTION INSPECTION SOFTWARE	
												10,000	10,000	10,000	832	30000	30,000	EACH	EROSION CONTROL	
									DRAINAGE											
								6,223				6,223			605	05110	6,223	FT	4" SHALLOW PIPE UNDERDRAINS WITH GEOTEXTILE FABRIC, 707.31 (PERFORATED)	
						46	14					60			611	00100	60	FT	4" CONDUIT, TYPE B	
						51						51			611	00900	51	FT	6" CONDUIT, TYPE B	
						55						55			611	01800	55	FT	8" CONDUIT, TYPE B	
						970	256					1,226			611	04400	1,226	FT	12" CONDUIT, TYPE B	
						10	5					15			611	05900	15	FT	15" CONDUIT, TYPE B	
						763						763			611	07400	763	FT	18" CONDUIT, TYPE B	
						477	47					524			611	10400	524	FT	24" CONDUIT, TYPE B	
						983	534					1,517			611	13400	1,517	FT	30" CONDUIT, TYPE B	
							217					217			611	16400	217	FT	36" CONDUIT, TYPE B	
20												20			611	97400	20	FT	CONDUIT, MISC.:TYPE B FOR DRAINAGE DISCHARGE CONTINUANCE	7

GENERAL SUMMARY

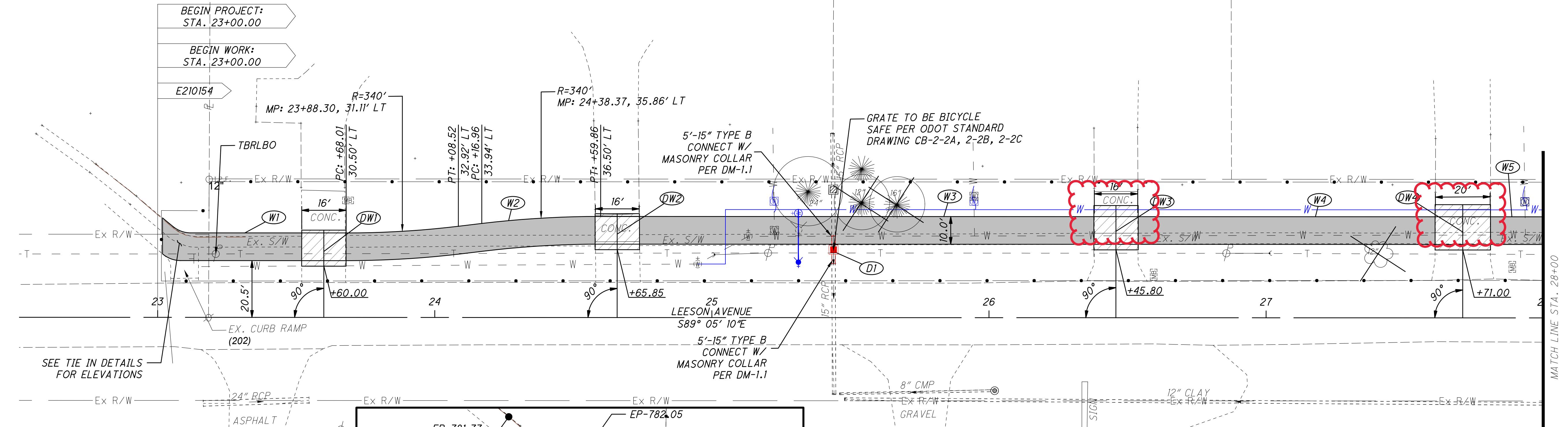
VAN-LEESON AVENUE

Z:\project\VanWert\VanWert-VAN-VWE-1903LeesonAvenueReconstruction\113907_GG.dwg 11-Dec-23 4:23 PM

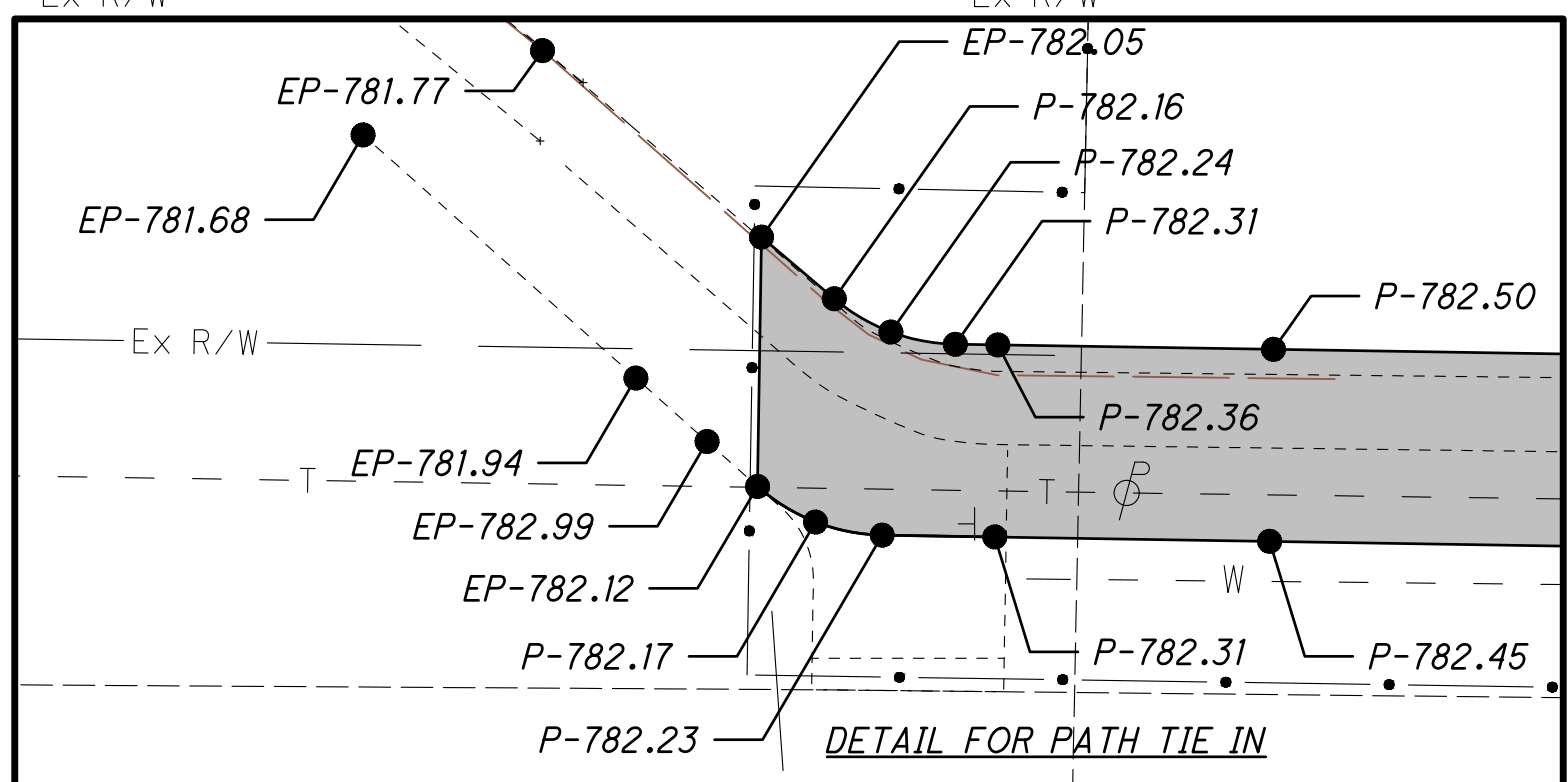
SHEET NUM.											PART.			ITEM	ITEM EXT	GRAND TOTAL	UNIT	DESCRIPTION	SEE SHEET NO.
7	14	15	16	17	18	19	45	46	47	57	01/S<2/04	02/NFP/43	03/ENH/28						
DRAINAGE																			
20											20			611	97400	20	FT	CONDUIT, MISC.:TYPE C FOR DRAINAGE DISCHARGE CONTINUANCE	7
20											20			611	97400	20	FT	CONDUIT, MISC.:TYPE E FOR DRAINAGE DISCHARGE CONTINUANCE	7
20											20			611	97400	20	FT	CONDUIT, MISC.:TYPE F FOR DRAINAGE DISCHARGE CONTINUANCE	7
					1						1			611	98470	1	EACH	CATCH BASIN, NO. 2-2B	
					37	15					52			611	98690	52	EACH	CATCH BASIN, MISC.: CB-1	123
					2						2			611	98690	2	EACH	CATCH BASIN, MISC.: CB-1A	124
					15	6					21			611	99575	21	EACH	MANHOLE, NO. 3, AS PER PLAN	7,124
					1						1			611	99584	1	EACH	MANHOLE, NO. 3 WITH 96" BASE I.D. AND 9" WEIR	
						3				2	3	2		611	99661	5	EACH	MANHOLE RECONSTRUCTED TO GRADE, AS PER PLAN	7,125
1											1			611	99720	1	EACH	INSPECTION WELL	
					4	1					5			611	99900	5	EACH	DRAINAGE STRUCTURE, MISC.:CLEAN OUT	121
		2									2			613	41200	2	CY	LOW STRENGTH MORTAR BACKFILL	
					1						1			895	10030	1	EACH	MANUFACTURED WATER QUALITY STRUCTURE, TYPE 3	
PAVEMENT																			
	872										872			254	01001	872	SY	PAVEMENT PLANING, ASPHALT CONCRETE, AS PER PLAN, VARIABLE DEPTH	7
	44										44			254	01601	44	SY	PATCHING PLANED SURFACE, AS PER PLAN	7
	1,329										1,329			302	56000	1,329	CY	ASPHALT CONCRETE BASE, PG64-22, (449)	
	2,657	478			44						2,657	522		304	20000	3,179	CY	AGGREGATE BASE	
	1,513	1			1						1,515			407	20000	1,515	GAL	NON-TRACKING TACK COAT	
	792										792			409	30000	792	FT	SAWING AND SEALING ASPHALT CONCRETE PAVEMENT JOINTS	
	1,296	623	226		270						1,296	1,119		411	10000	2,415	CY	STABILIZED CRUSHED AGGREGATE	
	910	1									911			441	70000	911	CY	ASPHALT CONCRETE SURFACE COURSE, TYPE 1, (449), PG64-22	
	582										582			441	70300	582	CY	ASPHALT CONCRETE INTERMEDIATE COURSE, TYPE 2, (449)	
					1								1	441	70500	1	CY	ASPHALT CONCRETE SURFACE COURSE, TYPE 1, (449), (DRIVEWAYS)	
					2								2	441	70600	2	CY	ASPHALT CONCRETE INTERMEDIATE COURSE, TYPE 1, (449), (DRIVEWAYS)	
					1,607								1,607	452	10010	1,607	SY	6" NON-REINFORCED CONCRETE PAVEMENT, CLASS QC 1P	
		6,422									6,422			609	12001	6,422	FT	COMBINATION CURB AND GUTTER, TYPE 2, AS PER PLAN	5
		27			9									609	26000	36	FT	CURB, TYPE 6	
WATER WORK																			
							13	36	23					202	75600	72	EACH	METER VAULT REMOVED	
									11					202	75610	11	EACH	VALVE BOX REMOVED	
							87							638	00521	87	FT	4" WATER MAIN POLYVINYL CHLORIDE PIPE AND FITTINGS, AWWA C900, DR18, AS PER PLAN	8,126
							279							638	01131	279	FT	6" WATER MAIN POLYVINYL CHLORIDE PIPE AND FITTINGS, AWWA C900, DR18, AS PER PLAN	8,126
							3,593							638	01721	3,593	FT	8" WATER MAIN POLYVINYL CHLORIDE PIPE AND FITTINGS, AWWA C900, DR18, AS PER PLAN	8,126
							718							638	02321	718	FT	10" WATER MAIN POLYVINYL CHLORIDE PIPE AND FITTINGS, AWWA C900, DR18, AS PER PLAN	8,126
								46						638	05301	46	FT	3/4" POLYETHYLENE SERVICE BRANCH, AS PER PLAN	8,127
							447	1,772						638	05401	2,219	FT	1" POLYETHYLENE SERVICE BRANCH, AS PER PLAN	8,127
							82	63						638	05501	145	FT	1-1/2" POLYETHYLENE SERVICE BRANCH, AS PER PLAN	8,127
							11							638	05600	11	FT	2" POLYETHYLENE SERVICE BRANCH	
							54							638	07300	54	FT	16" STEEL PIPE ENCASEMENT, BORED OR JACKED	
							1							638	07700	1	EACH	4" GATE VALVE AND VALVE BOX	
							12							638	07800	12	EACH	6" GATE VALVE AND VALVE BOX	
							18							638	07900	18	EACH	8" GATE VALVE AND VALVE BOX	
							5							638	08000	5	EACH	10" GATE VALVE AND VALVE BOX	
							10							638	10201	10	EACH	6" FIRE HYDRANT, AS PER PLAN	126
									6					638	10480	6	EACH	FIRE HYDRANT REMOVED	
							23	58						638	11201	81	EACH	METER, SETTING, STOP AND CHAMBER, AS PER PLAN	8,127
							2							SPECIAL	63820876	2	EACH	CUT AND PLUG EXISTING 4" WATER LINE, CITY OFVAN WERT	127
							3							SPECIAL	63820878	3	EACH	CUT AND PLUG EXISTING 6" WATER LINE, CITY OF VAN WERT	127
							1							SPECIAL	63820882	1	EACH	CUT AND PLUG EXISTING 10" WATER LINE, CITY OF VAN WERT	127
							1							638	98000	1	EACH	WATER WORK, MISC.: 6" CAP W/ 2" FEMALE THREADED COPPER TUBING, CITY OF VAN WERT	1
							1							638	98000	1	EACH	WATER WORK, MISC.: 8" SOLID SLEEVE, CITY OF VAN WERT	1

CALCULATED	BAW	CHECKED	MJH
GENERAL SUMMARY			
VAN-LEESON AVENUE			
12 166			

Z:\project\VanWert\VanWert\VAN-VWE-1903LeesonAvenueReconstruction\113907_GP.dwg 11-Dec-23 4:01 PM

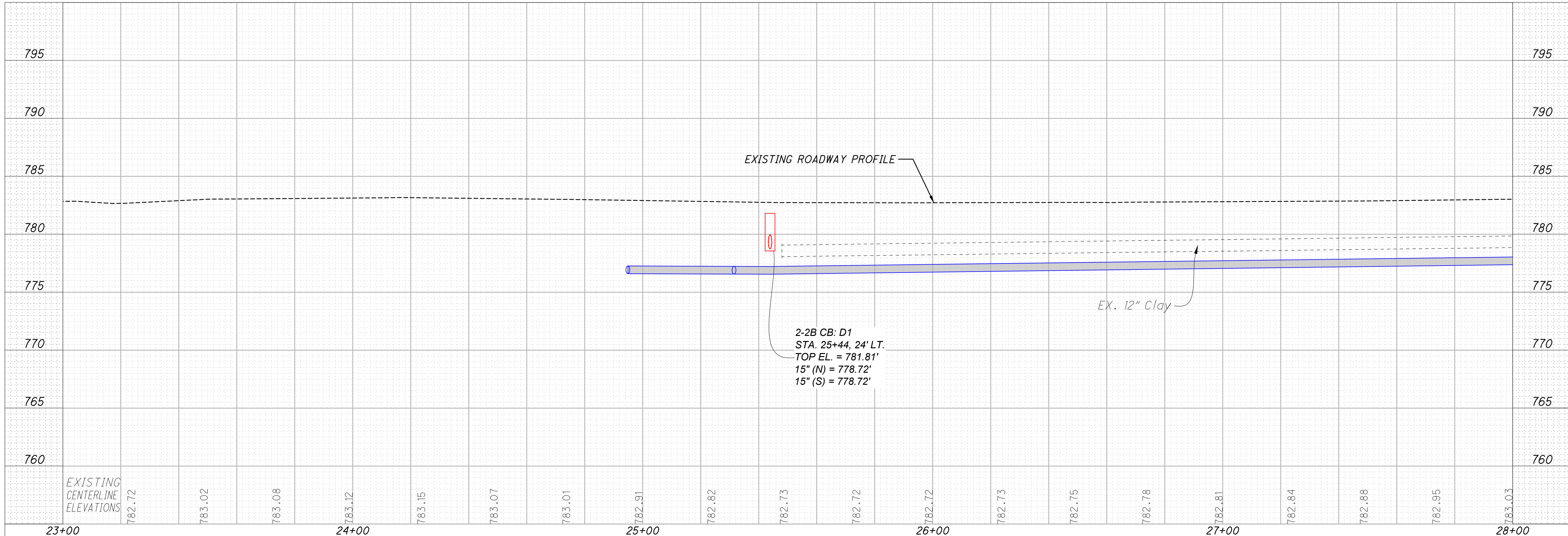


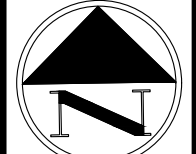
SEE SHEETS 48-56 FOR WATER WORK PLANS
SEE SHEETS 59-64 FOR SANITARY WORKS PLAN
SANITARY=GREEN
WATER=BLUE
STORM=RED



HATCH LEGEND FOR ALL PLAN SHEETS (SEE SHEET 5 FOR DETAILS OF EACH BUILD-UP)

	PROPOSED CURB RAMP		PAVEMENT PLANING AND RESURFACING
	RESIDENTIAL CONCRETE DRIVEWAYS		PAVEMENT TRENCH REPAIR
	PROPOSED SIDEWALK/SHARED USE PATH		RESIDENTIAL ASPHALT DRIVE
	RESIDENTIAL GRAVEL DRIVE		SEEDING AND MULCHING





0 20 40
HORIZONTAL SCALE IN FEET

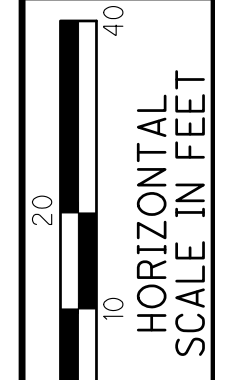
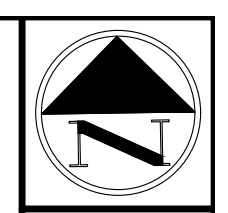
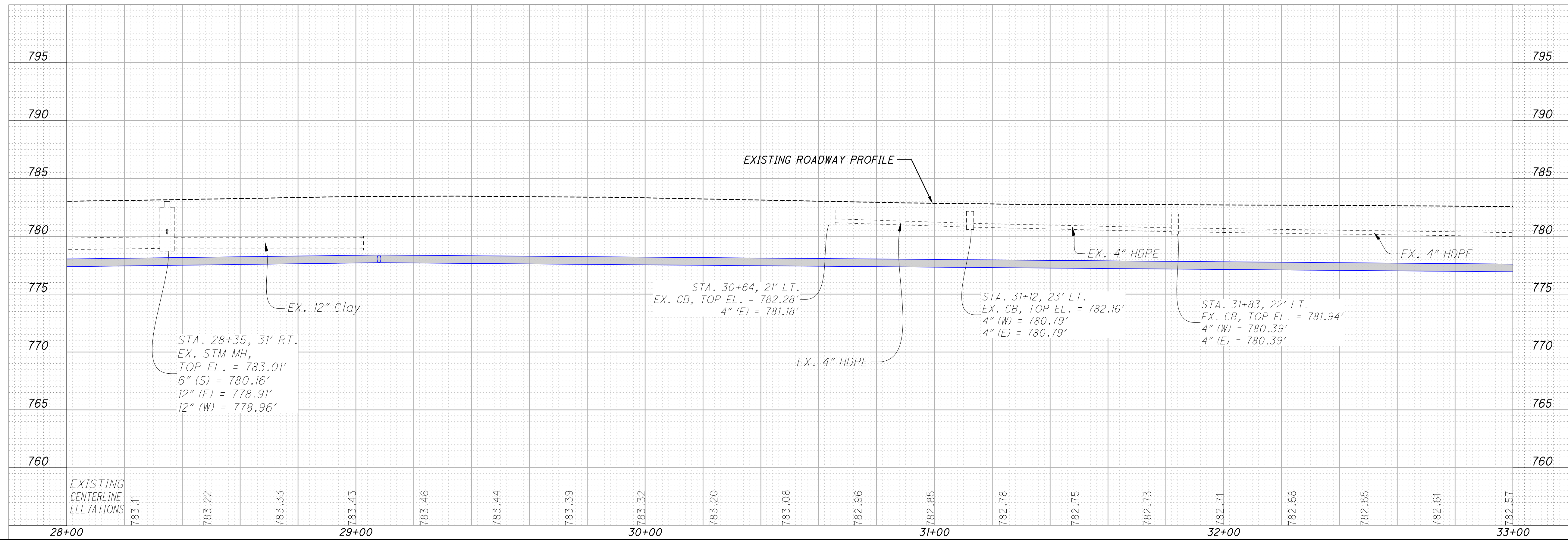
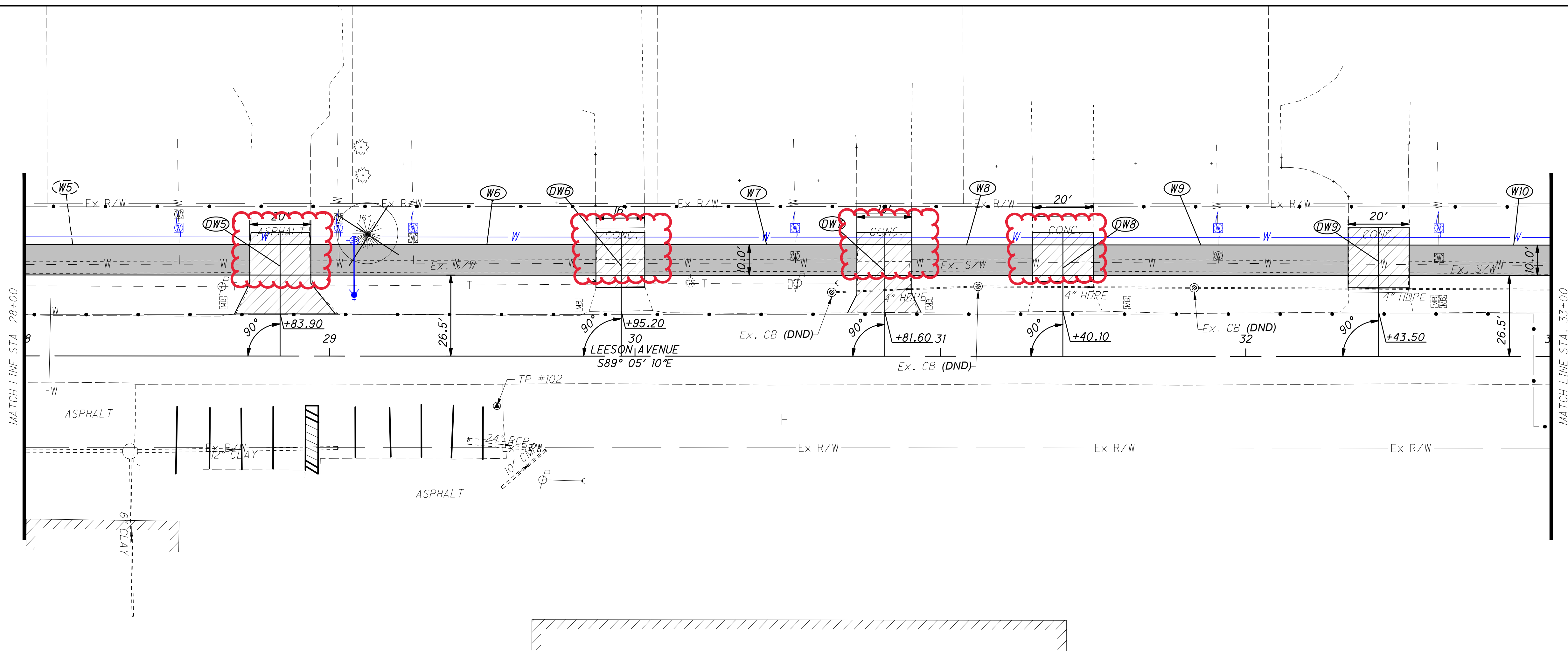
CALCULATED
E.A.W.
CHECKED
M.J.H.

VAN-LEESON AVENUE
23+00 TO STA. 28+00

25
166

Z:\project\VanWert\VanWert\VAN-WVE-1903LeesonAvenueReconstruction\113907_GP.dwg 11-Dec-23 4:02 PM

SEE SHEETS 48-56 FOR
WATER WORK PLANS
SEE SHEETS 59-64 FOR
SANITARY WORKS PLAN
SANITARY=GREEN
WATER=BLUE
STORM=RED

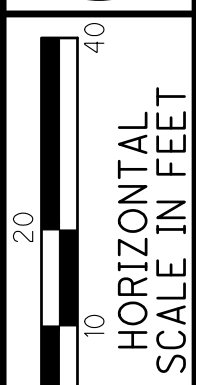
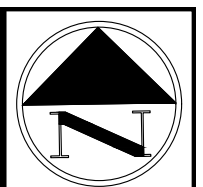
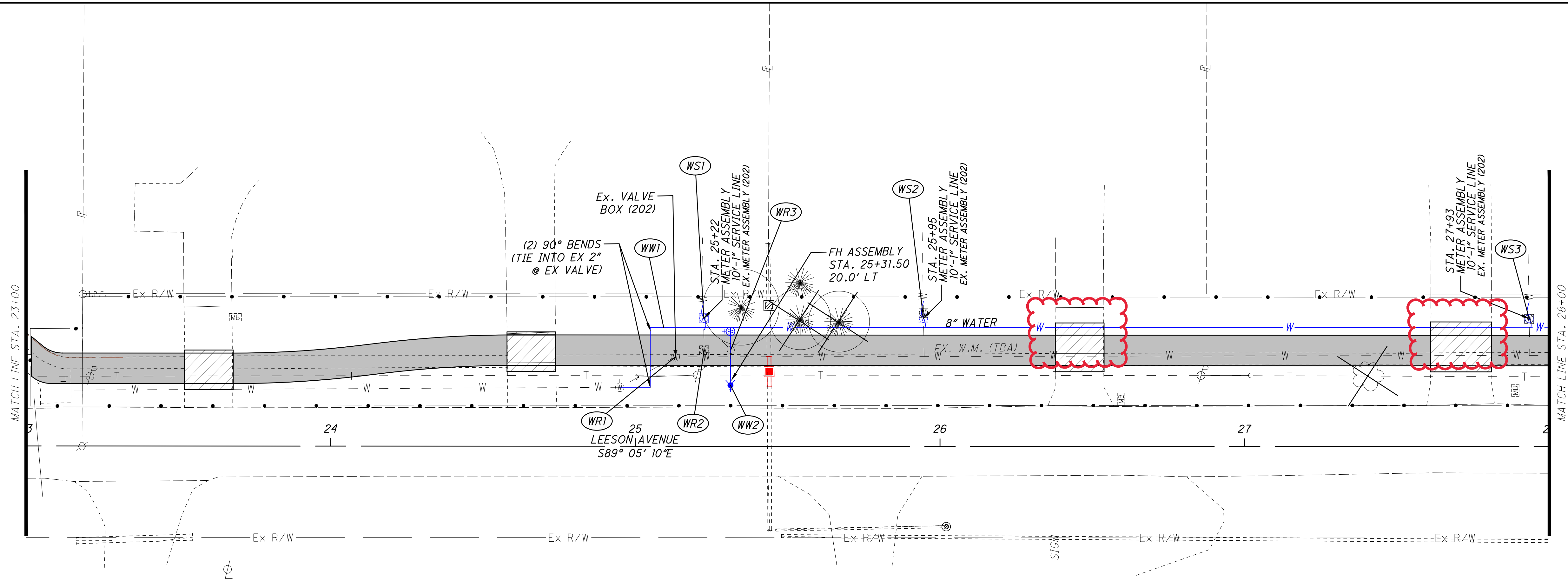
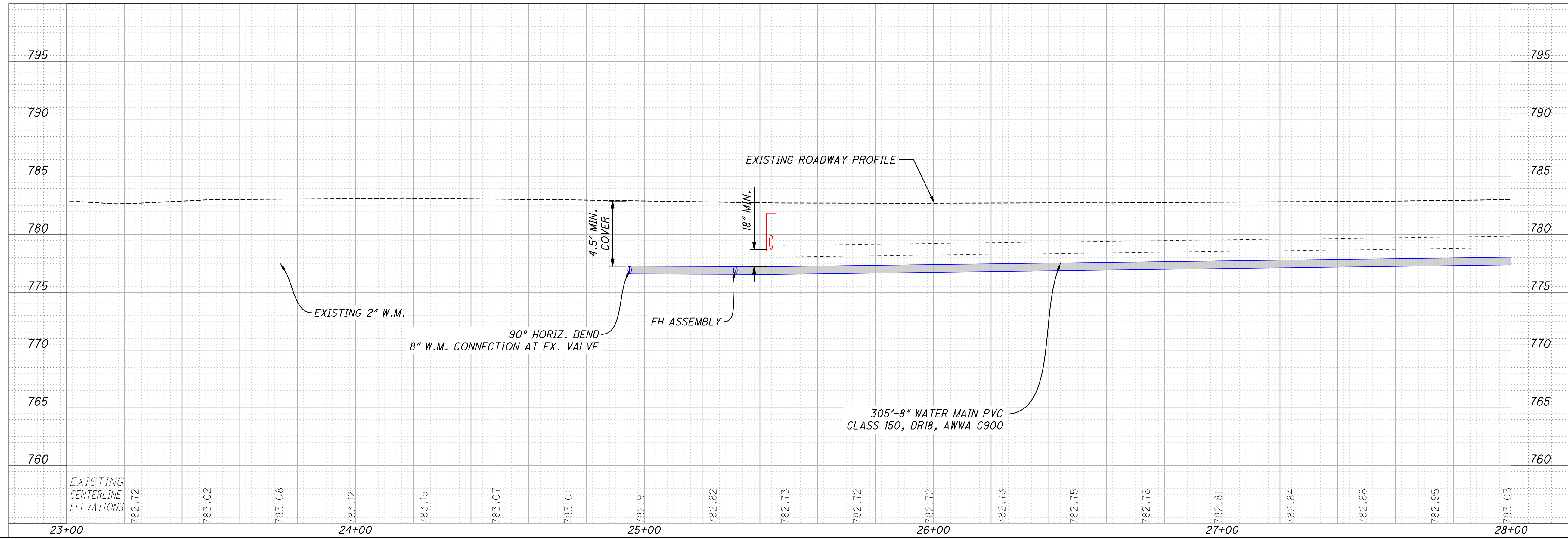


CALCULATED
E.A.W.
CHECKED
M.J.H.

VAN-LEESON AVENUE
PLAN AND PROFILE PATH EXTENSION
28+00 TO STA. 33+00

VAN-LEESON AVENUE

Z:\project\VanWert\VanWert\VAN-VWE-1903LeesonAvenueReconstruction\113907_UP001.dwg 11-Dec-23 4:05 PM

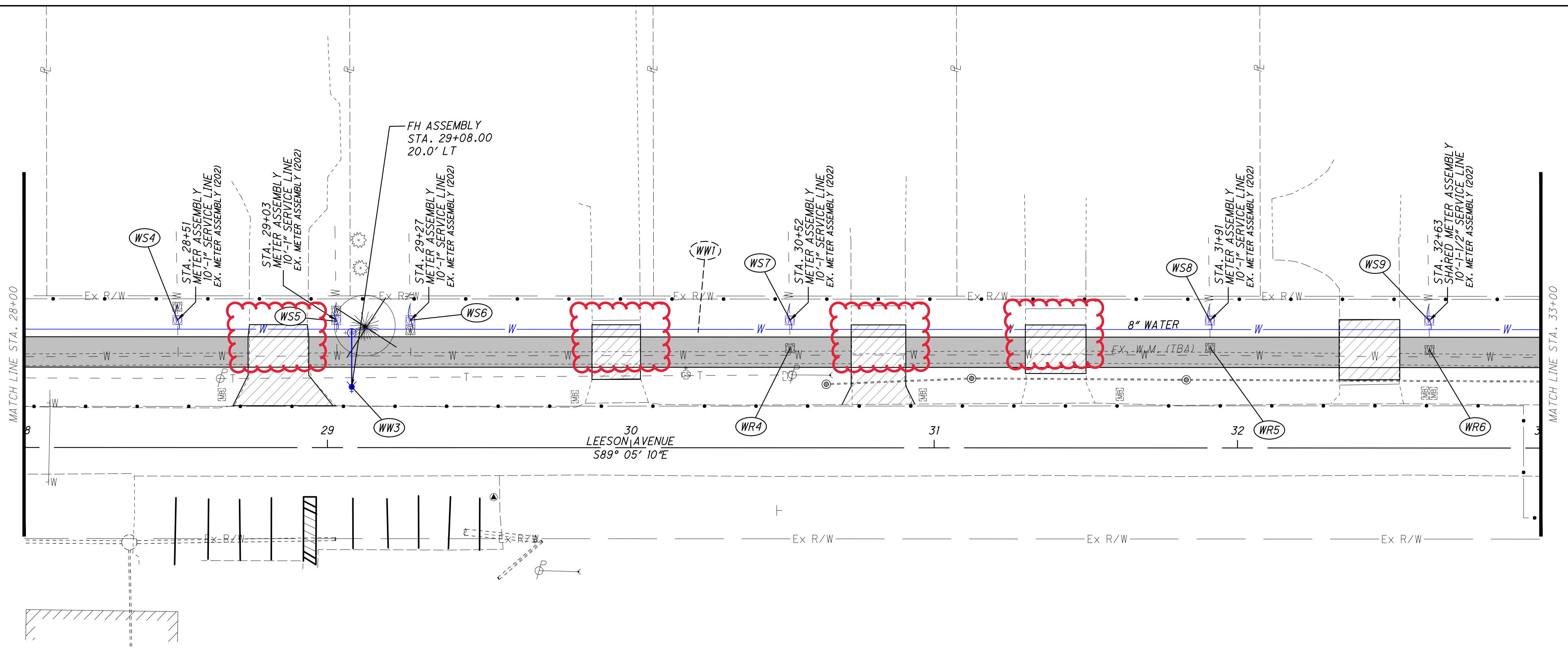
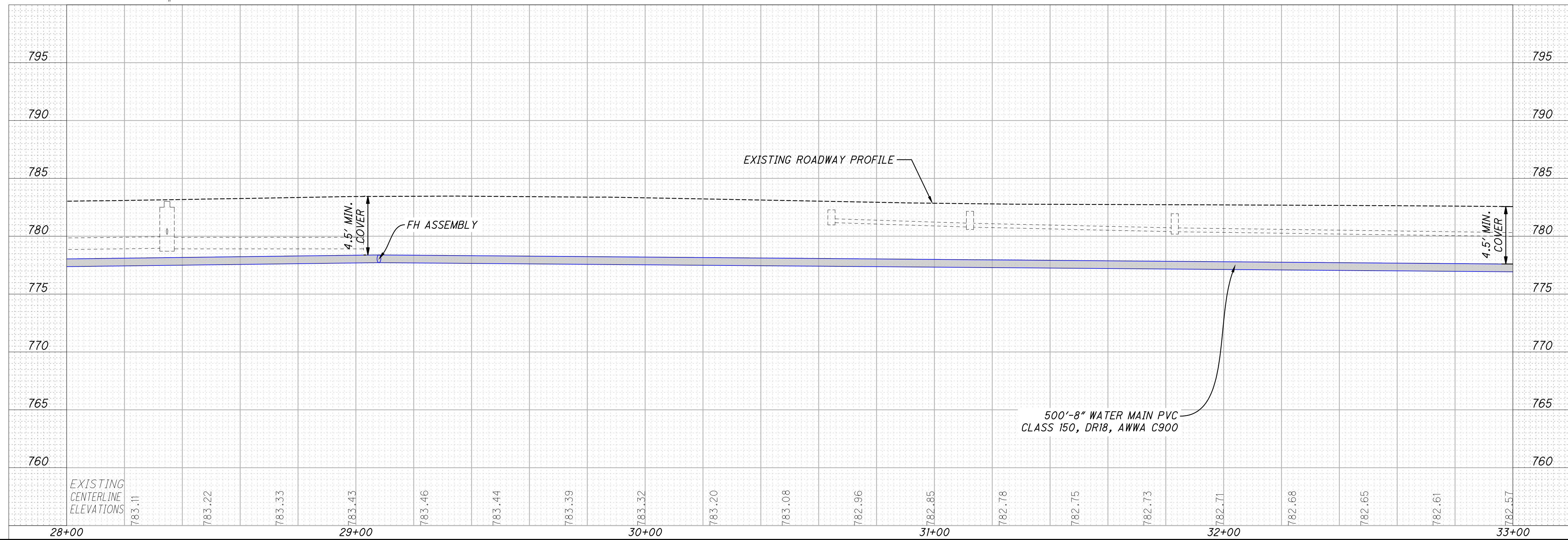


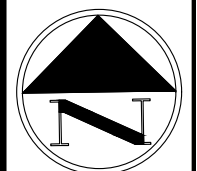
CALCULATED
E.A.W.
CHECKED
M.J.H.

WATER WORKS - PLAN AND PROFILE - LEESON AVENUE
23+00 TO STA. 28+00

VAN-LEESON AVENUE

Z:\project\VanWert\VanWert\VAN-VWE-1903LeesonAvenueReconstruction\113907_UP001.dwg 11-Dec-23 4:05 PM





0 20 40
HORIZONTAL
SCALE IN FEET

CALCULATED
E.A.W.

CHECKED
M.J.H.

WATER WORKS - PLAN AND PROFILE - LEESON AVENUE
28+00 TO STA. 33+00

VAN-LEESON AVENUE

49
166