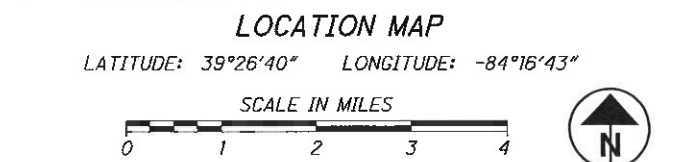


STATE OF OHIO  
DEPARTMENT OF TRANSPORTATION  
**WAR-SR 48 / 122**  
**-0.30 / 5.15**  
**WARREN COUNTY**



SEE SHEET 2



PORTION TO BE IMPROVED	
INTERSTATE HIGHWAY	
FEDERAL ROUTES	
STATE ROUTES	
COUNTY & TOWNSHIP ROADS	
OTHER ROADS	

DESIGN DESIGNATION	SR 122			SR 48		
	5.00-6.08	6.08-6.19	6.19-7.40	16.47-17.61	17.61-18.06	18.06-18.30
CURRENT ADT (2022)	6,600	6,700	6,800	11,500	10,500	10,000
DESIGN YEAR ADT (2034)	6,600	7,100	7,200	14,000	11,500	11,000
DESIGN HOURLY VOLUME (2034)	650	700	700	1,700	1,400	1,300
DIRECTIONAL DISTRIBUTION	52%	52%	52%	53%	53%	53%
TRUCKS (24 HOUR B&C)	4.0%	4.0%	4.0%	2.0%	4.0%	4.0%
DESIGN SPEED						
LEGAL SPEED						
DESIGN FUNCTIONAL CLASSIFICATION:	05 MAJOR COLLECTOR (URBAN) (RURAL),			03 PRINCIPAL ARTERIAL (URBAN)		

NHS PROJECT  YES

DESIGN EXCEPTIONS  NONE

ADA DESIGN WAIVER  REQUIRED

**INDEX OF SHEETS:**

TITLE SHEET	1
PROJECT LOCATION MAP	2
GENERAL NOTES	3
MAINTENANCE OF TRAFFIC	4
GENERAL SUMMARY	5-6
PAVEMENT QUANTITIES	7
PAVEMENT MARKINGS	8
CURB RAMP QUANTITIES	9
GUARDRAIL QUANTITIES	10
RAISED PAVEMENT MARKERS	11
EROSION CONTROL REPAIR	12
PLAN PROFILE	
CURB RAMP DETAILS	13-15

**PROJECT DESCRIPTION**

RESURFACING PORTIONS OF SR 48 AND SR 122 IN WARREN CO.

**EARTH DISTURBED AREAS**

PROJECT EARTH DISTURBED AREA: 4.1 ACRES  
ESTIMATED CONTRACTOR EARTH DISTURBED AREA: 0.0 ACRES  
NOTICE OF INTENT EARTH DISTURBED AREA: (NOI NOT REQUIRED)  
ROUTINE MAINTENANCE PROJECT

**2019 SPECIFICATIONS**

THE STANDARD SPECIFICATIONS OF THE STATE OF OHIO, DEPARTMENT OF TRANSPORTATION, INCLUDING SUPPLEMENTAL SPECIFICATIONS LISTED IN THE PLANS AND CHANGES LISTED IN THE PROPOSAL SHALL GOVERN THIS IMPROVEMENT.

I HEARBY APPROVE THESE PLANS AND DECLARE THAT THE MAKING OF THIS IMPROVEMENT WILL NOT REQUIRE THE CLOSING TO TRAFFIC OF THE HIGHWAY AND THAT PROVISIONS FOR THE MAINTENANCE AND SAFETY WILL BE AS SET FORTH ON THE PLANS AND ESTIMATE.

**UNDERGROUND UTILITIES**

Contact Two Working Days Before You Dig

OHIO811. 8-1-1. or 1-800-362-2764 (Non-members must be called directly)

PLAN PREPARED BY:  
ODOT DISTRICT 8 ENGINEERING  
505 S. STATE ROUTE 741  
LEBANON, OHIO 45036

ENGINEERS SEAL:

SIGNED:   
DATE: 3-3-2022

STANDARD CONSTRUCTION DRAWINGS				SUPPLEMENTAL SPECIFICATIONS		SPECIAL PROVISIONS	
BP-3.1	1/21/22	MT-105.10	1/17/20	800	1/21/22		
BP-3.2	1/18/19			832	10/19/18		
BP-4.1	7/19/13	TC-41.20	10/18/13	836	1/19/18		
BP-5.1	1/21/22	TC-42.20	10/18/13	872	1/21/22		
BP-7.1	1/21/22	TC-61.30	1/21/22	874	4/17/20		
		TC-64.10	1/17/20	875	1/18/19		
MGS-1.1	1/19/18	TC-65.10	1/17/14				
MGS-2.1	1/19/18	TC-65.11	7/21/17				
MGS-4.2	7/19/13	TC-71.10	1/21/22				
MGS-4.3	1/18/13						
MGS-5.3	7/15/16						
MT-95.60	4/19/19						
MT-95.61	4/19/19						
MT-97.10	4/19/19						
MT-97.11	1/20/17						

APPROVED:   
DATE: 3-3-2022 DISTRICT DEPUTY DIRECTOR

APPROVED: \_\_\_\_\_  
DATE: \_\_\_\_\_ DIRECTOR, DEPARTMENT OF TRANSPORTATION

I:\ProjectDctd\WAR\05194\_WAR-122-5.15\_Design\Roadway\Sheets\05194\_CTO01.dgn Sheet 3/3/2022 8:00:08 AM jcdavis4

FEDERAL PROJECT NO.	E171006
PID NO.	105194
CONSTRUCTION PROJECT NO.	
RAILROAD INVOLVEMENT	NONE
WAR-SR 48 / 122 - 0.30 / 5.15	1 / 15

**CONTINGENCY QUANTITIES**

THE CONTRACTOR SHALL NOT ORDER MATERIALS OR PERFORM WORK LISTED IN THE GENERAL SUMMARY FOR ITEMS DESIGNATED BY PLAN NOTE TO BE USED "AS DIRECTED BY THE ENGINEER UNLESS AUTHORIZED BY THE ENGINEER". THE ACTUAL WORK LOCATIONS AND QUANTITIES USED AT THE ENGINEER'S DIRECTION SHALL BE MADE A MATTER OF RECORD BY INCORPORATION INTO THE FINAL CHANGE ORDER GOVERNING COMPLETION OF THE PROJECT.

**PERMANENT PAVEMENT MARKINGS**

THE CONTRACTOR SHALL REFERENCE ALL PAVEMENT MARKINGS INCLUDING AUXILIARY PAVEMENT MARKINGS BEFORE THE START OF THE RESURFACING OPERATION. THIS WILL BE NECESSARY TO ASSURE THE CORRECT PLACEMENT OF MARKINGS IN ORIGINAL LOCATIONS (EXCEPT WHERE NOTED). FOR CENTER LINE MARKINGS, THE CONTRACTOR SHALL INSTALL THE PASSING/NO PASSING ZONE MARKINGS ACCORDING TO THE CURRENT CENTER LINE LOGS AVAILBLE AT <http://www.dot.state.oh.us/Divisions/Operations/Traffic/miscellaneous/Pages/CenterlinePassingandNoPassingZoneLogs.aspx> PAYMENT FOR THIS OPERATION SHALL BE INCLUDED WITH EACH RESPECTIVE PAVEMENT MARKING ITEM.

**ITEM 623- CONSTRUCTION LAYOUT STAKES, AS PER PLAN**

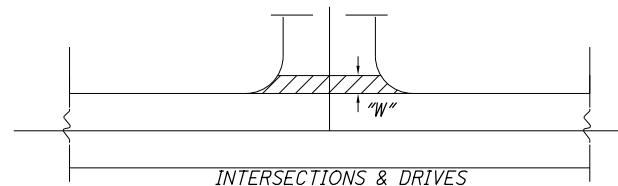
PRIOR TO THE START OF ROADWAY OPERATION, THE CONTRACTOR SHALL REFERENCE THE LENGTH OF THE PROJECT ON BOTH SIDES OF THE ROADWAY, IN A MANNER SATISFACTORY TO THE ENGINEER. THE PAVEMENT SHALL BE REFERENCED IN 1000' FEET INCREMENTS, OR IN INCREMENTS ACCEPTABLE TO THE ENGINEER, IN A SEMIPERMANENT CONDITION.

**ITEM 254- PAVEMENT PLANING, ASPHALT CONCRETE**

THE PLANING SHALL BE SCHEDULED SO AS TO BE COVERED BY THE INTERMEDIATE FOR SR 122 WORK. SURFACE COURSE FOR SR 48 WORK PRIOR TO REOPENING THE LANE TO TRAFFIC. THE COST OF THE ABOVE SHALL BE INCLUDED IN THE UNIT BID PRICE FOR THE RESPECTIVE ITEM. A DISINCENTIVE IN THE AMOUNT OF \$3,600 SHALL BE ASSESSED FOR EACH DAY, OR PORTION THEREOF, A PLANED SURFACE IS OPEN TO TRAFFIC.

ADJUST DEPTH OF PLANING AT NECESSARY BRIDGE APPROACH SLABS. PLAIN PAVEMENT TO PROVIDE SMOOTH TRANSITIONS AT BRIDGE(S).

**INTERSECTIONS AND DRIVES**

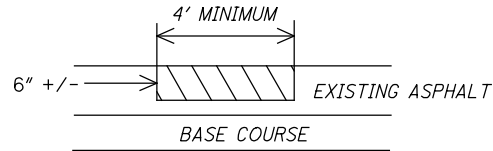


INTERSECTION AND DRIVES QUANTITIES ARE INCLUDED IN THE ASPHALT CONCRETE QUANTITIES. INTERSECTION QUANTITIES HAVE BEEN ESTIMATED AT 15' MEASURED FROM EDGE OF PAVED SHOULDER, DRIVE QUANTITIES HAVE BEEN ESTIMATED AT 3' "W" MEASURED FROM EDGE OF PAVED SHOULDER.

PERFORM WORK PER SPECIFIED OFFSET LIMITS UNLESS THERE IS AN EXISTING JOINT LOCATED CLOSER TO THE EDGE OF PAVED SHOULDER, IN WHICH CASE END WORK AT SAID JOINT, EXCEPT WHERE NOTED BELOW.

**ITEM 253- PAVEMENT REPAIR**

AN ESTIMATED QUANTITY OF 150 CU YDS OF ITEM 253- PAVEMENT REPAIR HAS BEEN CARRIED TO THE GENERAL SUMMARY TO BE USED AS DIRECTED BY THE ENGINEER. THIS OPERATION SHALL BE PERFORMED BEFORE PAVEMENT PLANING OF ROADWAY.



EXISTING DETERIORATED ASPHALT SHALL BE REMOVED TO A MAXIMUM DEPTH OF 6" INCHES OR AS DIRECTED BY THE ENGINEER AND REPLACED WITH ITEM 301, ASPHALT CONCRETE BASE SHALL BE COMPACTED AS PER 401.15 AND IN APPROXIMATELY EQUAL LAYERS. THE LOCATIONS AND SIZE OF THE REPAIRS SHALL BE DETERMINED BY THE ENGINEER.

**INTERIM COMPLETION REQUIREMENTS**

THE PROJECT HAS AN INTERIM COMPLETION DATE OF 10/01/2022. PAVEMENT REPAIR FOR SR 122 SHALL BE COMPLETED ON OR BEFORE THE INTERIM COMPLETION OR BEFORE THE INTERIM COMPLETION DATE.

THE CONTRACT WILL BE SUBJECT TO DAILY DISINCENTIVES FOR FAILURE TO COMPLETE ALL THE REQUIRED WORK, AND ASSOCIATED INCIDENTALS RELATED TO THE WORK, AS OUTLINED IN THE TABLE INCLUDED IN THIS NOTE. APPLICATION OF THE DISINCENTIVES WILL BE BASED ON THE OVERALL CONTRACT AMOUNT. DAILY DISINCENTIVES ARE APPLICABLE TO THE WORK REQUIRED TO THE INTERIM COMPLETION DATE ONLY. THE CONTRACT IS STILL SUBJECT TO LIQUIDATED DAMAGES AS OUTLINED IN CMS 108.07 FOR THE REMAINDER OF THE CONTRACT.

DESCRIPTION OR LOCATION OF CRITICAL WORK	COMPLETION DATE	TIME PERIOD	DISINCENTIVE \$ PER TIME PERIOD
WAR- 122 5.15-7.40: PAVEMENT REPAIRS SHALL BE COMPLETED.	10/1/2022	DAY	\$2500

**ADA WAIVER**

AN APPROVED ADA DESIGN WAIVER IS REQUIRED ON THIS PROJECT. THE FOLLOWING FEATURES LISTED BELOW CANNOT FEASIBLY BE CONSTRUCTED TO MEET ADA GUIDELINES.

ADA DESIGN WAIVER		
ADA FEATURE	APPROVAL DATE	SHEET NUMBER
RPM0006753	5/20/22	SHEET 15 (RAMP CROSS SLOPE)

**GUARDRAIL INSTALLATION**

THIS PROJECT REQUIRES THE INSTALLATION OF NEW GUARDRAIL POSTS. SURVEY WORK HAS NOT BEEN PERFORMED EVERYWHERE ON THIS PROJECT, NOR HAVE THE UTILITY LOCATIONS BEEN CONFIRMED IN THE FIELD. IN ADDITION TO CMS 105.07, IF, DURING THE COURSE OF INSTALLING ANY NEW GUARDRAIL COMPONENT, IT IS DETERMINED THAT A UTILITY CONFLICT MAY RESULT, THE CONTRACTOR IS TO NOTIFY THE PROJECT ENGINEER IMMEDIATELY. UTILITIES ARE NOT TO BE RELOCATED AS A RESULT OF THIS OPERATION. ADJUSTMENTS TO THE PROPOSED GUARDRAIL WILL ACCOMMODATE THE EXISTING UTILITY. THE CONTRACTOR IS RESPONSIBLE FOR INSTALLING THE GUARDRAIL VIA MEANS THAT WOULD BE COMPLIANT WITH THE IMPACTED UTILITY'S SAFETY GUIDELINES AS WELL AS STILL MEETING ODOT'S DESIGN CRITERIA. ANY MINOR ADJUSTMENTS MADE TO THE PROPOSED GUARDRAIL INSTALLATIONS SHALL BE INCIDENTAL TO PAY ITEM 606.

**ITEM 202 - ANCHOR ASSEMBLY REMOVED, TYPE A, AS PER PLAN**

WHERE DESIGNATED, EXISTING ANCHOR ASSEMBLIES INCLUDING ALL POST AND HARDWARE SHALL BE REMOVED. THIS ITEM SHALL ALSO INCLUDE THE REMOVAL OF THE ENTIRE CONCRETE ANCHOR AND CONCRETE ENCASMENT. ALL HOLES LEFT AFTER REMOVAL OF ASSEMBLIES AND POSTS SHALL BE FILLED WITH GRANULAR MATERIAL AS DIRECTED BY THE ENGINEER. PAYMENT SHALL INCLUDE ALL NECESSARY LABOR AND EQUIPMENT REQUIRED TO PERFORM THE INDICATED ABOVE.

**ITEM 606 - ANCHOR ASSEMBLY, MGS TYPE E**

THIS ITEM SHALL CONSIST OF FURNISHING AND INSTALLING ANY OF THE GUARDRAIL END TERMINALS FOR TYPE MGS GUARDRAIL AS LISTED ON ROADWAY ENGINEERING'S WEB PAGE UNDER ROADSIDE SAFETY DEVICES FOR APPROVED GUARDRAIL END TREATMENTS. INSTALLATION SHALL BE AT THE LOCATIONS SPECIFIED IN THE PLANS, IN ACCORDANCE WITH THE MANUFACTURER'S SPECIFICATIONS.

THE FACE OF THE TYPE E IMPACT HEAD SHALL BE COVERED WITH A SHEET OF TYPE G REFLECTIVE SHEETING, PER CMS 730.19.

REFER TO THE MANUFACTURER'S INSTRUCTIONS REGARDING THE INSTALLATION OF, AND THE GRADING AROUND THE FOUNDATION TUBES AND GROUND STRUT. THE TOP OF ANY FOUNDATION TUBE SHOULD BE LESS THAN 4 INCHES ABOVE THE GROUND. THE PLACEMENT OF THE FOUNDATION TUBES SHOULD BE AN APPROPRIATE DEPTH BELOW THE LEVEL LINE IN ORDER TO MAINTAIN THE FINISHED GUARDRAIL HEIGHT OF 31 INCHES FROM THE EDGE OF THE SHOULDER.

ON-SITE GRADING IS REQUIRED IF THE TOP OF THE FOUNDATION TUBES OR TOP OF THE GROUND STRUT DOES PROJECT MORE THAN 4 INCHES ABOVE THE GROUND LINE.

PAYMENT FOR THE ABOVE WORK SHALL BE MADE AT THE UNIT PRICE BID FOR ITEM 606, ANCHOR ASSEMBLY, MGS TYPE E, EACH, AND SHALL INCLUDE ALL LABOR, TOOLS, EQUIPMENT AND MATERIALS NECESSARY TO CONSTRUCT A COMPLETE AND FUNCTIONAL ANCHOR ASSEMBLY SYSTEM, INCLUDING ALL RELATED TRANSITIONS, REFLECTIVE SHEETING, HARDWARE, GRADING, EMBANKMENT AND EXCAVATION NOT SEPARATELY SPECIFIED, AS REQUIRED BY THE MANUFACTURER.

**CONNECTION BETWEEN EXISTING AND PROPOSED GUARDRAIL**

WHEN IT IS NECESSARY TO SPLICE PROPOSED GUARDRAIL TO EXISTING GUARDRAIL, ONLY THE EXISTING GUARDRAIL SHALL BE CUT, DRILLED, OR PUNCHED. THE CONNECTION SHALL BE MADE USING A W-BEAM, BEAM SPLICE AS SHOWN IN AASHTO M 180-12, EXCEPT THE BEAM WASHERS ARE NOT TO BE USED. PAYMENT SHALL BE INCLUDED IN THE CONTRACT PRICE FOR THE RESPECTIVE GUARDRAIL ITEMS.

**PROJECT COORDINATION**

THE CONTRACTOR NEEDS TO COORDINATE WITH PROJECT ON PID 113587 ON SR 122 AT 6.33 S.L.M. TO 6.37 S.L.M. THIS IS A CULVERT REPLACEMENT. WORK ON SR 122 SHOULD NOT BEGIN UNTIL WORK FROM THE CULVERT PROJECT HAS BEEN FINISHED.

**MANHOLES AND VALVES ADJUSTED TO GRADE (PRIVATELY OWNED)**

ALL MANHOLE AND VALVES ENCOUNTERED IN AREAS THAT REQUIRE GRADE ADJUSTMENT WILL BE PERFORMED PRIOR TO THE APPLICATION OF THE SURFACE COURSE BY THE UTILITY OWNER. CONTACT THE UTILITY OWNER 2 WEEKS PRIOR TO WHEN THE ADJUSTMENTS ARE TO BE COMPLETED.

**ITEM 611 - MANHOLE ADJUSTED TO GRADE**

THIS WORK SHALL CONSIST OF ADJUSTING MANHOLES TO GRADE PRIOR TO THE APPLICATION OF THE SURFACE COURSE AS DIRECTED BY THE ENGINEER. THE FOLLOWING QUANTITY HAS BEEN CARRIED TO THE GENERAL SUMMARY:

ITEM 611 - MANHOLE ADJUSTED TO GRADE..... 4 EA.

**ITEM 611 - CATCH BASIN ADJUSTED TO GRADE**

THIS WORK SHALL CONSIST OF ADJUSTING CATCH BASINS TO GRADE PRIOR TO THE APPLICATION OF THE SURFACE COURSE AS DIRECTED BY THE ENGINEER. THE FOLLOWING QUANTITY HAS BEEN CARRIED TO THE GENERAL SUMMARY:

ITEM 611 - CATCH BASIN ADJUSTED TO GRADE..... 14 EACH

**ITEM 638 - VALVE BOX ADJUSTED TO GRADE**

THIS WORK SHALL CONSIST OF ADJUSTING VALVE BOXES TO GRADE PRIOR TO THE APPLICATION OF THE SURFACE COURSE AS DIRECTED BY THE ENGINEER. THE FOLLOWING QUANTITY HAS BEEN CARRIED TO THE GENERAL SUMMARY:

ITEM 638 - VALVE BOX ADJUSTED TO GRADE..... 9 EA.

**SIGN AT MAINEVILLE RD**

SIGN AT MAINEVILLE RD WILL NEED TO BE RELOCATED DUE TO CURB RAMP UPGRADE. QUANTITIES ARE CARRIED TO THE GENERAL SUMMARY.

- ITEM 630 NO. GROUND MOUNTED SUPPORT 3 POST 12 FT
- ITEM 630 REMOVAL OF GROUND MOUNTED SIGN AND REERECTION 2 EACH
- ITEM 630 REMOVAL OF GROUND MOUNTED POST AND DISPOSAL. 1 EACH

I:\ProjectData\WAR\105194\_WAR-122-5.15\Design\Roadway\Sheets\105194\_GN001.dgn\_Sheet 5/20/2022 8:58:59 AM jlavisa

CALCULATED JED CHECKED JDO  
**GENERAL NOTES**  
**WAR-SR 48 / 122**  
**-0.30 / 5.15**  
3  
15

I:\Project\05194\_WAR-122-5.15\Design\Roadway\Sheets\05194\_GG001.dgn Sheet 5/20/2022 9:25:18 AM Idavis4

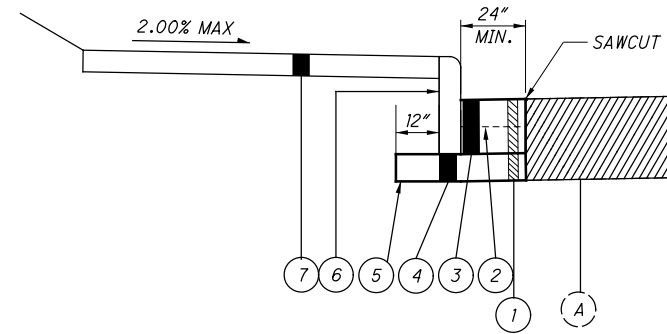
SHEET NUM.								PART.				ITEM	ITEM EXT	GRAND TOTAL	UNIT	DESCRIPTION	SEE SHEET NO.
3	4	7	8	9	10	11	12	01/NHS/PV	02/S>2/PV	03/STR/PV	04/SSAF/OT						
<b>ROADWAY</b>																	
				462					462			202	30000	462	SF	WALK REMOVED	
				60					60			202	32500	60	FT	CURB AND GUTTER REMOVED	
				20					20			202	32000	20	FT	CURB REMOVED	
				2,263					925	1,338		202	38000	2,263	FT	GUARDRAIL REMOVED	
					24				13	11		202	42001	24	EACH	ANCHOR ASSEMBLY REMOVED, TYPE A, AS PER PLAN	
					2					2		202	42010	2	EACH	ANCHOR ASSEMBLY REMOVED, TYPE E	
					2					1		202	42040	2	EACH	ANCHOR ASSEMBLY REMOVED, TYPE T	
							28		28			203	10000	28	CY	EXCAVATION	
							125		125			204	10000	125	SY	SUBGRADE COMPACTION	
		4.5						2.4		2.1		209	72050	4.5	MILE	PREPARING SUBGRADE FOR SHOULDER PAVING	
					1,712.5				650	1,062.5		606	15100	1,712.5	FT	GUARDRAIL, TYPE MGS WITH LONG POSTS	
					26				13	12		606	26150	26	EACH	ANCHOR ASSEMBLY, MGS TYPE E, (MASH 2016)	
					2				1	1		606	26550	2	EACH	ANCHOR ASSEMBLY, MGS TYPE T	
				187					187			608	10000	187	SF	4" CONCRETE WALK	
				227					227			608	52000	227	SF	CURB RAMP	
				8					8			608	53020	8	SF	DETECTABLE WARNING	
<b>EROSION CONTROL</b>																	
									333	333	334	832	30000	1,000	EACH	EROSION CONTROL	
							63		63			836	10000	63	SY	SEEDING AND EROSION CONTROL WITH TURF REINFORCING MAT, TYPE 1	
<b>DRAINAGE</b>																	
4									4			611	98630	4	EACH	CATCH BASIN ADJUSTED TO GRADE	
14									14			611	99654	14	EACH	MANHOLE ADJUSTED TO GRADE	
							3		3			611	99900	3	EACH	DRAINAGE STRUCTURE, MISC.: CURB OPENING FOR DRAINAGE OUTLET	
<b>PAVEMENT</b>																	
45									5	28	12	253	02000	45	CY	PAVEMENT REPAIR	
				11					11			253	02001	11	CY	PAVEMENT REPAIR, AS PER PLAN	
	28,232							15,057		13,175		254	01000	28,232	SY	PAVEMENT PLANING, ASPHALT CONCRETE, 3"	
	283							151		132		254	01600	283	SY	PATCHING PLANED SURFACE	
							24		24			301	56000	24	CY	ASPHALT CONCRETE BASE, PG64-22, (449)	
							18		18			304	20000	18	CY	AGGREGATE BASE, 6"	
	14,998							2,259	8,482	4,257		407	20000	14,998	GAL	NON-TRACKING TACK COAT	
	4,983						3		3,930	1,056		424	14000	4,986	CY	FINE GRADED POLYMER ASPHALT CONCRETE, TYPE B, (448)	
	1,028							548		480		441	50000	1,028	CY	ASPHALT CONCRETE SURFACE COURSE, TYPE 1, (448), PG64-22	
	1,372							732		640		441	50300	1,372	CY	ASPHALT CONCRETE INTERMEDIATE COURSE, TYPE 2, (448)	
									12			609	12000	12	FT	COMBINATION CURB AND GUTTER, TYPE 2	
				54			375		375			609	24610	375	FT	CURB, TYPE 4-C	
	136							73		63		609	26000	54	FT	CURB, TYPE 6	
	551							404.3	146.7			617	10100	551	CY	COMPACTED AGGREGATE, WITH SAFETY EDGE	
									9,715	3,520		617	20000	13,235	SY	SHOULDER PREPARATION	
	13,235							1.45	8.1	4.2		617	25000	13.75	MGAL	WATER	
											1.57	618	43000	1.57	MILE	RUMBLE STRIPES, CENTER LINE (ASPHALT CONCRETE)	
											8,290	874	20000	8,290	FT	LONGITUDINAL JOINT PREPARATION	
	179,376						105		141,474	38,007		897	01010	179,481	SY	PAVEMENT PLANING, ASPHALT CONCRETE, CLASS A, 1"	
	1,797								1,416	381		897	02000	1,797	SY	PATCHING PLANED SURFACE	
<b>WATER WORK</b>																	
9									9			638	10800	9	EACH	VALVE BOX ADJUSTED TO GRADE	
<b>TRAFFIC CONTROL</b>																	
									95	669	268	621	00100	1,032	EACH	RPM	
									95	669	268	621	54000	1,032	EACH	RAISED PAVEMENT MARKER REMOVED	
					38				16	22		626	00110	38	EACH	BARRIER REFLECTOR, TYPE 2, BI-DIRECTIONAL	
12									12			630	03100	12	FT	GROUND MOUNTED SUPPORT, NO. 3 POST	
2									2			630	85100	2	EACH	REMOVAL OF GROUND MOUNTED SIGN AND REERECTION	

**GENERAL SUMMARY**

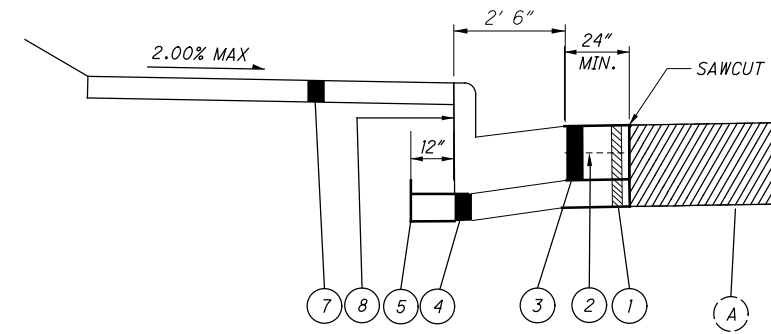
**WAR-SR 48 / 122  
-0.30 / 5.15**

- 1 ITEM 253 - PAVEMENT REPAIR, AS PER PLAN
- 2 ITEM 407 - NON-TRACKING TACK COAT
- 3 ITEM 301 - 8" ASPHALT CONCRETE BASE, PG 64-22, (449) 2 - 4" LIFTS
- 4 ITEM 304 - 6" AGGREGATE BASE
- 5 ITEM 204- SUBGRADE COMPACTION
- 6 ITEM 609 - CURB, TYPE 6
- 7 ITEM 608 - 4" CONCRETE WALK
- 8 ITEM 609 - COMBINATION CURB AND GUTTER, TYPE 2
- A EXISTING ASPHALT SECTION

TYPICAL SECTION 1



TYPICAL SECTION 2



NOTE: SAME PAVEMENT REPAIR BUILD-UP AT CURB RAMP LOCATIONS.

I:\ProjectData\WAR\105194\_WAR-122-5.15\_Design\Roadway\Sheets\105194\_CRO01.dgn\_Sheet 5/20/2022 9:18:33 AM jdav1s4

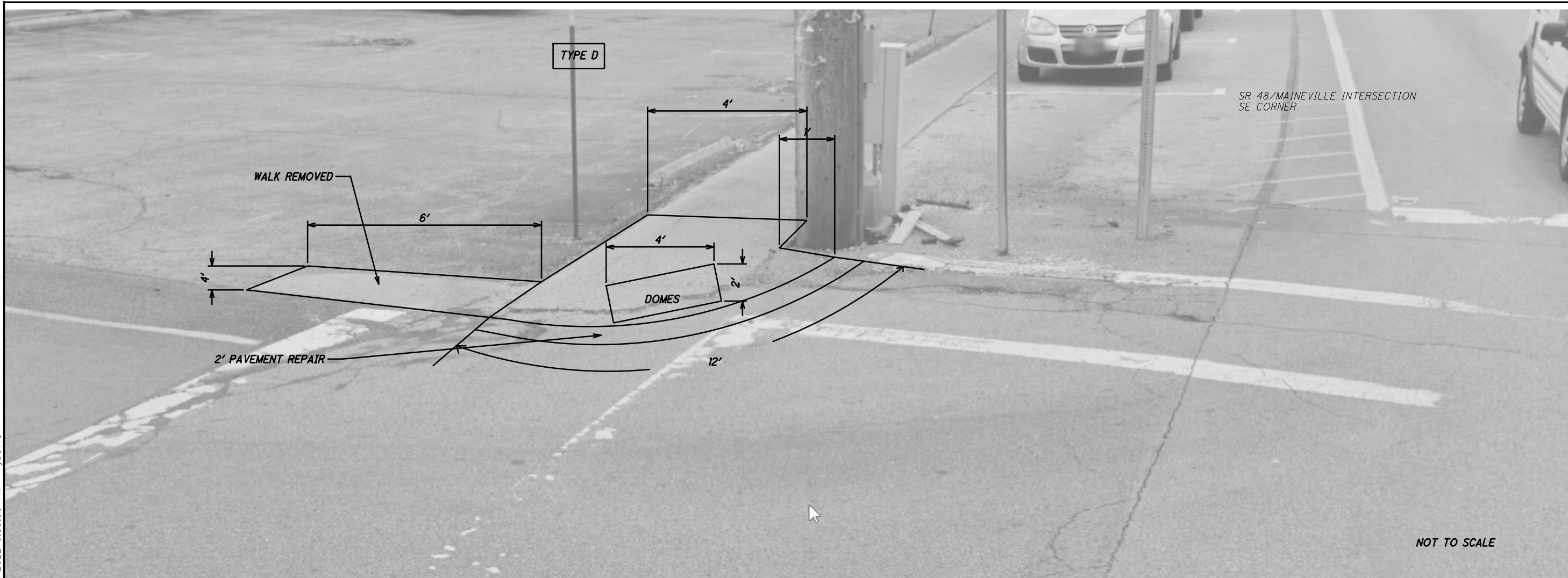
PART	COUNTY	ROUTE	LOGPOINT OR INTERSECTING STREETNAME	FOR INFORMATION ONLY CURB RAMP TYPE PER BP-7.1					202			608			609		253	ADDITIONAL NOTES	
				TYPE A1	TYPE A2	TYPE B2	TYPE B3	TYPE D	WALK REMOVED	CURB AND GUTTER REMOVED	CURB REMOVED	4" CONCRETE WALK	CURB RAMP	DETECTABLE WARNING	CURB, TYPE 6	CURB AND GUTTER TYPE 2	PAVEMENT REPAIR, AS PER PLAN		
				ONE EACH PER COMPASS DESCRIBED LOCATION					SQ FT	FEET	FEET	SQ FT	SQ FT	SQ FT	FEET	FEET	CU YD		
02/S>2/PV	WAR	48	DEERSHADOW NE CORNER				1												
02/S>2/PV	WAR	48	DEERSHADOW SE CORNER		1														
02/S>2/PV	WAR	48	MAINEVILLE RD NE CORNER																
02/S>2/PV	WAR	48	MAINEVILLE RD NW CORNER																MATCH CURRENT LAYOUT
02/S>2/PV	WAR	48	MAINEVILLE SW CORNER	1															
02/S>2/PV	WAR	48	MAINEVILLE SE CORNER																
TOTALS CARRIED TO GENERAL SUMMARY									462	60	20	187	227	8	54	12	11		

CALCULATED  
JED  
CHECKED  
JDO

CURB RAMP QUANTITIES

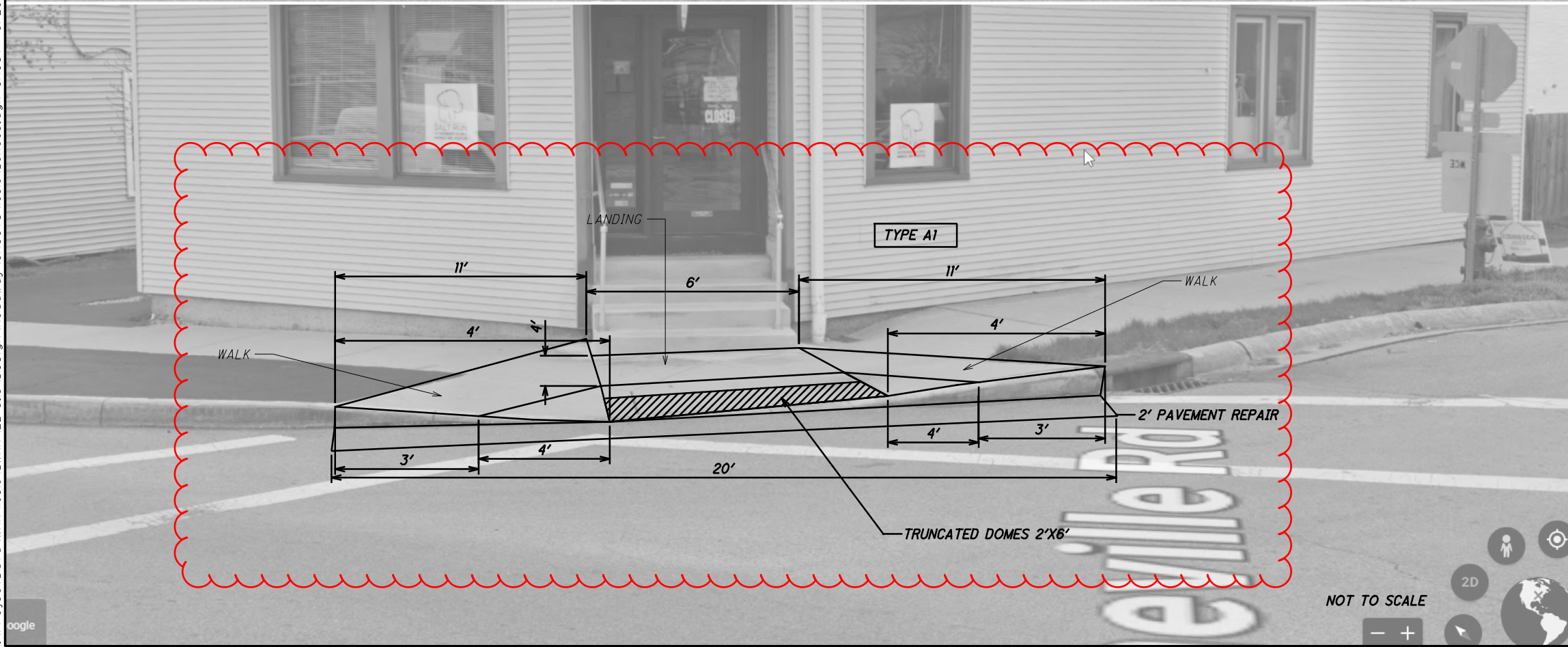
WAR-SR 48 / 122  
-0.30 / 5.15

I:\ProjectData\WAR\105194\_WAR-122-5.15\Design\Roadway\Sheets\105194\_CR005.dgn Sheet 5/20/2022 8:55:50 AM jdav1s4



SR 48/MAINEVILLE INTERSECTION  
SE CORNER

NOT TO SCALE



SR 48/MAINEVILLE INTERSECTION  
SW CORNER

NOT TO SCALE

CALCULATED
JED
CHECKED
JDO

CURB RAMP DETAILS

WAR-SR 48 / 122  
-0.30 / 5.15

15
15