

BRIDGE TREATMENTS				
LOCATION	SLM (TO THE NEAREST HUNDRETH OF A MILE)	SFN	EXISTING SURFACE	PROPOSED TREATMENT
WAS-7	26.83	8402205	ASPHALT	MILL 1.5", PAVE 1.5"
WAS-7	30.22	8402248	CULVERT	SAME TREATMENT AS ROADWAY
WAS-7	30.88	8402264	CULVERT	SAME TREATMENT AS ROADWAY
WAS-7	31.36	8402299	CULVERT	SAME TREATMENT AS ROADWAY

ITEM 253, PAVEMENT REPAIR

PERFORM PARTIAL DEPTH PAVEMENT REPAIRS WHERE FAILING ASPHALT CONCRETE IS FOUND, IT SHALL BE REPAIRED AT A DEPTH OF 3" AND A MINIMUM WIDTH OF 4' UNLESS OTHERWISE DIRECTED BY THE ENGINEER. THE REPLACEMENT MATERIAL SHALL CONFORM TO ITEM 442, ASPHALT CONCRETE INTERMEDIATE COURSE, TYPE 2 REPAIR LOCATIONS SHALL BE DIRECTED BY THE ENGINEER.

64 LOCATIONS ARE ESTIMATED FOR PARTIAL DEPTH PAVEMENT REPAIR. THE NUMBER OF LOCATIONS IS FOR INFORMATION ONLY. THE FINAL NUMBER OF LOCATIONS SHALL BE DIRECTED BY THE ENGINEER.

25 CY CARRIED TO THE GENERAL SUMMARY

WAS-7-24.72 DRAINAGE RECONSTRUCTION

THE FOLLOWING ITEMS SHALL BE USED TO REMOVE AND RECONSTRUCT DRAINAGE FEATURES:

ITEM	UNIT	DESCRIPTION	QUANTITY
202E30000	SF	WALK REMOVED	30
202E32000	FT	CURB REMOVED	10
202E32600	FT	GUTTER REMOVED	24
611E04600	FT	12" CONDUIT, TYPE C	20
611E98861	EACH	INLET, NO. 2-A-10, AS PER PLAN	1
611E99660	EACH	MANHOLE RECONSTRUCTED TO GRADE	1

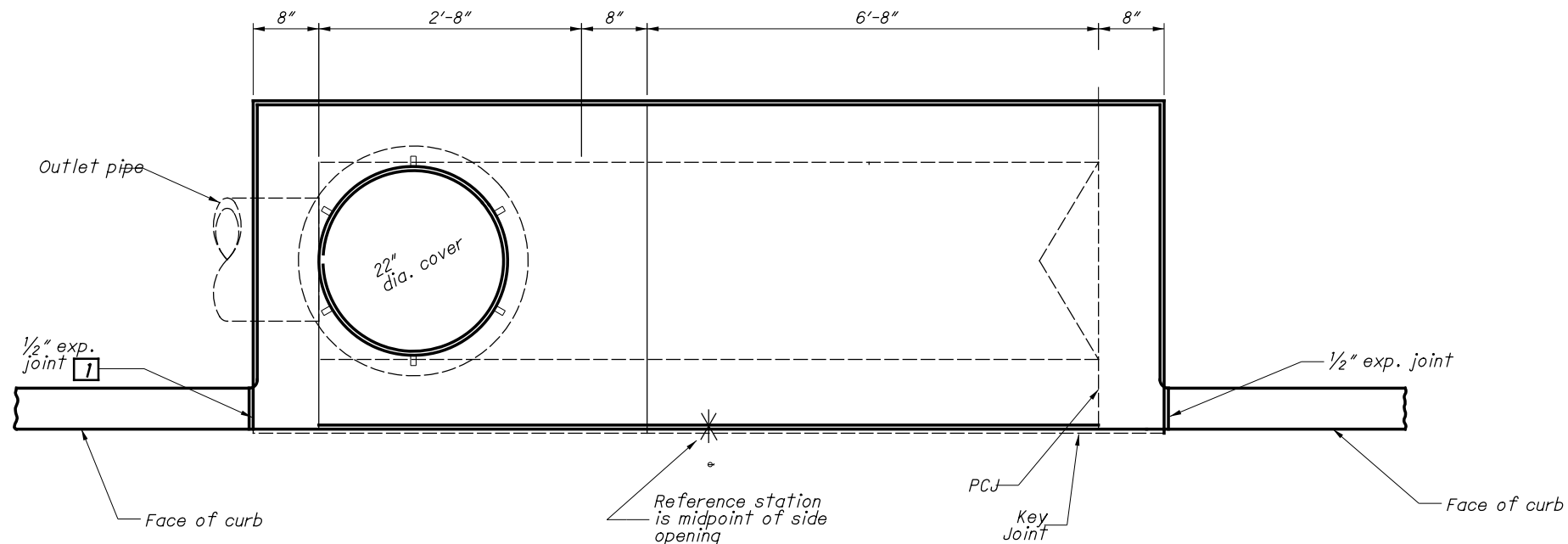
INLET 2-A-10, AS PER PLAN:

SEE DETAIL BELOW. INLET SHALL BE CONSTRUCTED ALONG LEFT SIDE OF SR 7 AT SLM 24.72. OUTLET SHALL BE IN THE SOUTH END OF THE INLET AND TIE INTO THE EXISTING CATCH BASIN AT THE END OF EXISTING GUTTER.

THE DEPTH FROM TOP OF INLET LID TO THE INVERT OF 12" OUTLET PIPE SHALL BE 5 FT. THE 12" OUTLET PIPE SHALL HAVE A SLOPE OF 1% AND FLOW INTO EXISTING CATCH BASIN.

MANHOLE RECONSTRUCTED TO GRADE:

REMOVE EXISTING FRAME AND COVER. RECONSTRUCT WITH MANHOLE NO. 3 FRAME AND COVER.



DESIGN AGENCY



DESIGNER
WBC

REVIEWER
MRF 08-09-21

PROJECT ID
104762

SHEET TOTAL
5 27

SHEET NUM.														PART.			ITEM	ITEM EXT	GRAND TOTAL	UNIT	DESCRIPTION	SEE SHEET NO.			
4	5	7	8	9	10	11	12	13	14	15	16	17	18	01/NHS/PV	02/NHS/PV	03/NHS/PV									
ROADWAY																									
	30												1,236	526		740	202	30000	1,266	SF	WALK REMOVED				
	10												128	122		16	202	32000	138	FT	CURB REMOVED				
													252	132		120	202	32001	252	FT	CURB REMOVED, AS PER PLAN	4			
	24													24			202	32600	24	FT	GUTTER REMOVED				
											3,365	188		3,067	486		202	98200	3,553	FT	REMOVAL MISC.: LONGITUDINAL CHANNELIZER REMOVED FOR STORAGE	4			
			6.56											6.56			209	72050	6.56	MILE	PREPARING SUBGRADE FOR SHOULDER PAVING				
													102			102	608	10000	102	SF	4" CONCRETE WALK				
													1,332	673		659	608	52000	1,332	SF	CURB RAMP				
													8			8	608	53020	8	SF	DETECTABLE WARNING				
DRAINAGE																									
	20													20			611	04600	20	FT	12" CONDUIT, TYPE C				
	1													1			611	98861	1	EACH	INLET, NO. 2-A-10, AS PER PLAN	5			
	1													1			611	99660	1	EACH	MANHOLE RECONSTRUCTED TO GRADE				
PAVEMENT																									
	25													25			253	02000	25	CY	PAVEMENT REPAIR				
			61,575											61,575			254	01000	61,575	SY	PAVEMENT PLANING, ASPHALT CONCRETE, 0.75"				
		105,776	37,179											118,151	24,804		254	01000	142,955	SY	PAVEMENT PLANING, ASPHALT CONCRETE, 1.5"				
		8,465	10,979											17,458	1,986		407	20000	19,444	GAL	NON-TRACKING TACK COAT				
			3,079											3,079			408	10000	3,079	GAL	PRIME COAT				
		4,412	4,160											7,537	1,035		442	10000	8,572	CY	ASPHALT CONCRETE SURFACE COURSE, 12.5 MM, TYPE A (446)				
			321											321			617	10100	321	CY	COMPACTED AGGREGATE				
			6.56											6.56			618	41000	6.56	MILE	RUMBLE STRIPES, EDGE LINE (ASPHALT CONCRETE)				
			3.28											3.28			618	43000	3.28	MILE	RUMBLE STRIPES, CENTER LINE (ASPHALT CONCRETE)				
			2,566											2,566			861	11100	2,566	CY	ASPHALT CONCRETE INTERMEDIATE COURSE, 12.5 MM, TYPE A (446)				
TRAFFIC CONTROL																									
				455	123	190	149						433	1,205	145		621	00100	1,350	EACH	RPM				
				455	123	190	149						433	1,205	145		621	54000	1,350	EACH	RAISED PAVEMENT MARKER REMOVED				
				1.46	4.01								6.56	10.89	1.14		644	00104	12.03	MILE	EDGE LINE, 6"				
				6.65										5.54	1.11		644	00204	6.65	MILE	LANE LINE, 6"				
							1.87							4.8	0.35		644	00300	5.15	MILE	CENTER LINE				
						171	485							505	151		644	00400	656	FT	CHANNELIZING LINE, 8"				
						1,888	4,068							4,903	1,053		644	00404	5,956	FT	CHANNELIZING LINE, 12"				
							1,385	720		692	155	24		569	302		644	00500	871	FT	STOP LINE				
							264							1,470	635		644	00620	2,105	FT	CROSSWALK LINE, 12"				
														144	120		644	00630	264	FT	CROSSWALK LINE, 24"				
											496			315	181		644	00700	496	FT	TRANSVERSE/DIAGONAL LINE				
											96			96			644	00900	96	SF	ISLAND MARKING				
								47	53	29				106	23		644	01300	129	EACH	LANE ARROW				
												93			93		644	01510	93	FT	DOTTED LINE, 6"				
TRAFFIC SIGNALS																									
	45													21	24		632	26500	45	EACH	DETECTOR LOOP				
MAINTENANCE OF TRAFFIC																									
	16				13.3									11.08	2.22		614	20510	13.3	MILE	WORK ZONE LANE LINE, CLASS II, 6", 642 PAINT				
				6.65										5.54	1.11		614	20560	6.65	MILE	WORK ZONE LANE LINE, CLASS III, 6", 642 PAINT				
						3.74								12.88	0.7		614	21500	13.58	MILE	WORK ZONE CENTER LINE, CLASS II, 642 PAINT				
						1.87								4.8	0.35		614	21550	5.15	MILE	WORK ZONE CENTER LINE, CLASS III, 642 PAINT				
			1.46	4.01										4.33	1.14		614	22360	5.47	MILE	WORK ZONE EDGE LINE, CLASS III, 6", 642 PAINT				
						3,776	8,136							9,806	2,106		614	23670	11,912	FT	WORK ZONE CHANNELIZING LINE, CLASS II, 12", 642 PAINT				
						1,888	4,068							4,903	1,053		614	23690	5,956	FT	WORK ZONE CHANNELIZING LINE, CLASS III, 12", 642 PAINT				
										692	155			545	302		614	26610	847	FT	WORK ZONE STOP LINE, CLASS III, 642 PAINT				
											3,365	188		3,067	486		831	00100	3,553	FT	LONGITUDINAL CHANNELIZING DEVICE				
INCIDENTALS																									
														LS	LS	LS	614	11000	LS		MAINTAINING TRAFFIC				
														LS	LS	LS	623	10001	LS		CONSTRUCTION LAYOUT STAKES AND SURVEYING, AS PER PLAN	4			
														LS	LS	LS	624	10000	LS		MOBILIZATION				

GENERAL SUMMARY

DESIGN AGENCY



DESIGNER

WBC

REVIEWER

MRF 08-09-21

PROJECT ID

104762

SHEET

TOTAL

6 27