

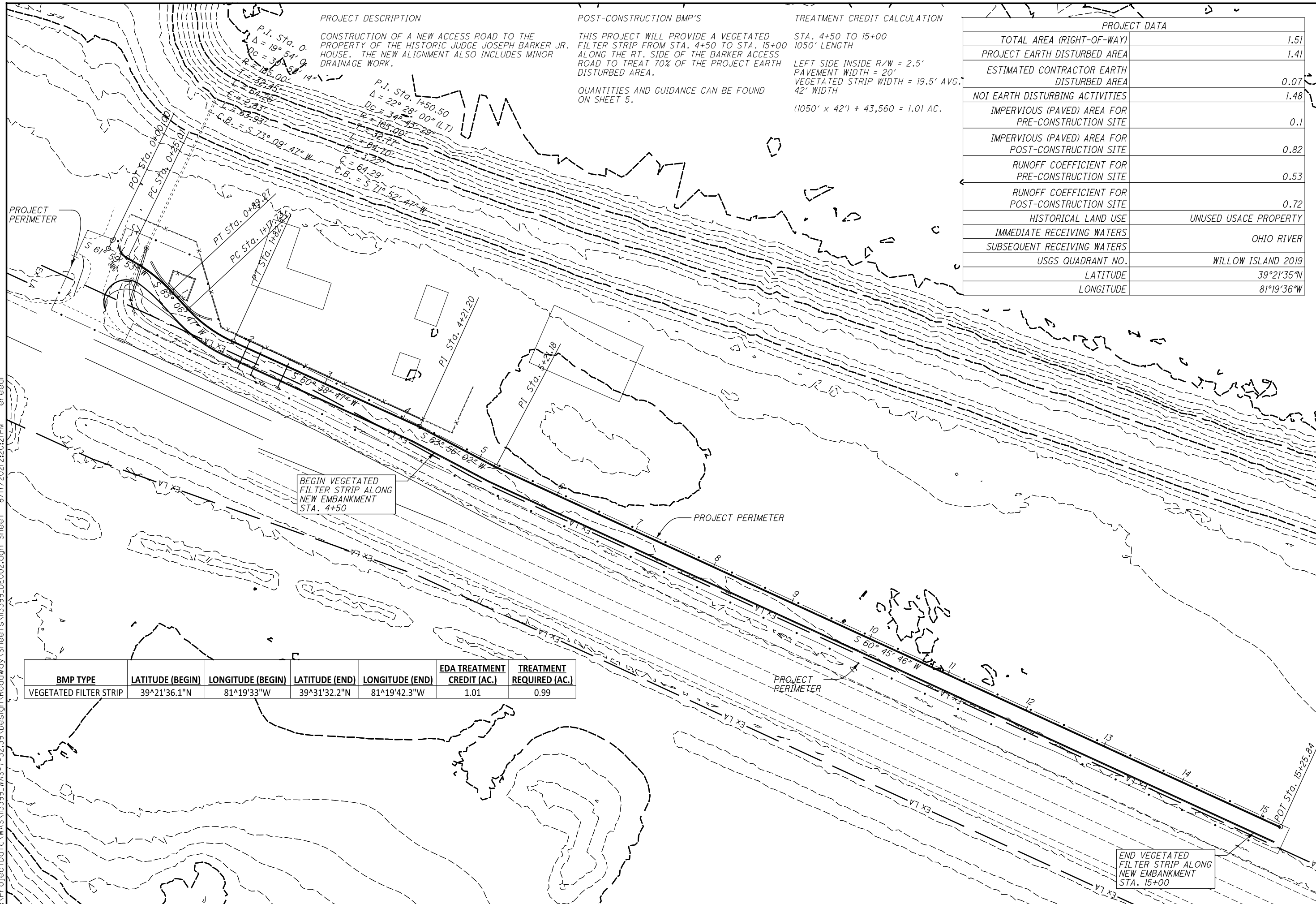
I:\ProjectData\WAS-7-32\39\Design\Roadway\Sheets\13399_GG001.dgn Sheet 8/17/2021 2:33:48 PM ereed

SHEET NUM.						PART.			ITEM	ITEM EXT	GRAND TOTAL	UNIT	DESCRIPTION	SEE SHEET NO.
3	5	6	7	9	14	01/NHS/PV								
	LUMP					LUMP		201	11000	LS		ROADWAY		
					22	22		202	23000	22	SY	PAVEMENT REMOVED		
					99	99		202	35100	99	FT	PIPE REMOVED, 24" AND UNDER		
					102	102		202	75001	102	FT	FENCE REMOVED, AS PER PLAN	5	
				657		657		203	10000	657	CY	EXCAVATION		
				454		454		203	20000	454	CY	EMBANKMENT		
				3,781		3,781		204	10000	3,781	SY	SUBGRADE COMPACTION		
	56					56		204	13000	56	CY	EXCAVATION OF SUBGRADE		
	56					56		204	20000	56	CY	EMBANKMENT		
	2					2		204	45000	2	HOUR	PROOF ROLLING		
196						196		606	17900	196	EACH	GUARDRAIL POST		
				56		56		607	98000	56	FT	FENCE, MISC.:USACE TYPE FE6 CHAIN LINK FENCE (6'-0" FABRIC WIDTH)	5	
				31		31		607	98000	31	FT	FENCE, MISC.:USACE TYPE FE6 CHAIN LINK FENCE (10'-0" FABRIC WIDTH)	5	
				1		1		607	50901	1	EACH	GATE, TYPE CL, AS PER PLAN	5	
				70		70		622	10160	70	FT	CONCRETE BARRIER, SINGLE SLOPE, TYPE D		
				2		2		622	25000	2	EACH	CONCRETE BARRIER END SECTION, TYPE D		
				1		1		SPECIAL	69050350	1	EACH	MAILBOX REMOVED AND RESET	4	
												EROSION CONTROL		
	65					65		659	00300	65	CY	TOPSOIL		
	1,105					1,105		659	10000	1,105	SY	SEEDING AND MULCHING		
	221					221		659	14000	221	SY	REPAIR SEEDING AND MULCHING		
	0.1					0.1		659	20000	0.1	TON	COMMERCIAL FERTILIZER		
	0.23					0.23		659	31000	0.23	ACRE	LIME		
	2					2		659	35000	2	MGAL	WATER		
	583					583		670	00500	583	SY	SLOPE EROSION PROTECTION		
						LUMP		832	15000	LS		STORM WATER POLLUTION PREVENTION PLAN		
						LUMP		832	15002	LS		STORM WATER POLLUTION PREVENTION INSPECTIONS		
						LUMP		832	15010	LS		STORM WATER POLLUTION PREVENTION INSPECTION SOFTWARE		
						3,000		832	30000	3,000	EACH	EROSION CONTROL		
												DRAINAGE		
				0.5		0.5		602	20000	0.5	CY	CONCRETE MASONRY		
				62		62		611	10200	62	FT	24" CONDUIT, TYPE A		
				87		87		611	00101	87	FT	4" CONDUIT, TYPE B, AS PER PLAN	5	
				1		1		611	99551	1	EACH	MANHOLE, NO. 1, AS PER PLAN	5	
												PAVEMENT		
					84	84		252	01500	84	FT	FULL DEPTH PAVEMENT SAWING		
					315	315		254	01000	315	SY	PAVEMENT PLANING, ASPHALT CONCRETE (1.25" DEPTH)		
				803		803		304	20000	803	CY	AGGREGATE BASE		
				209		209		407	10000	209	GAL	TACK COAT		
				132		132		441	50000	132	CY	ASPHALT CONCRETE SURFACE COURSE, TYPE 1, (448), PG64-22		
				185		185		441	50300	185	CY	ASPHALT CONCRETE INTERMEDIATE COURSE, TYPE 2, (448)		
												TRAFFIC CONTROL		
				9		9		630	80100	9	SF	SIGN, FLAT SHEET		
				1		1		630	08600	1	EACH	SIGN POST REFLECTOR		
				12		12		630	03100	12	FT	GROUND MOUNTED SUPPORT, NO. 3 POST		
				50		50		642	00500	50	FT	STOP LINE, TYPE 1		
				0.29		0.29		642	00300	0.29	MILE	CENTER LINE, TYPE 1		
				0.58		0.58		642	00100	0.58	MILE	EDGE LINE, 4", TYPE 1		
												MAINTENANCE OF TRAFFIC		
			0.02			0.02		614	21000	0.02	MILE	WORK ZONE CENTER LINE, CLASS I		
			0.26			0.26		614	22000	0.26	MILE	WORK ZONE EDGE LINE, CLASS I, 4"		
			35			35		615	20000	35	SY	PAVEMENT FOR MAINTAINING TRAFFIC, CLASS A		
	5					5		616	10000	5	MGAL	WATER		
												INCIDENTALS		
	LUMP					LUMP		614	11000	LS		MAINTAINING TRAFFIC		
						LUMP		623	10000	LS		CONSTRUCTION LAYOUT STAKES AND SURVEYING		
						LUMP		624	10000	LS		MOBILIZATION		

GENERAL SUMMARY

WAS-7-32.15

I:\ProjectData\WAS-7-32\39\Design\Roadway\Sheets\113399_DE002.dgn Sheet 8/17/2021 2:20:21 PM eread



PROJECT DESCRIPTION

CONSTRUCTION OF A NEW ACCESS ROAD TO THE PROPERTY OF THE HISTORIC JUDGE JOSEPH BARKER JR. HOUSE. THE NEW ALIGNMENT ALSO INCLUDES MINOR DRAINAGE WORK.

POST-CONSTRUCTION BMP'S

THIS PROJECT WILL PROVIDE A VEGETATED FILTER STRIP FROM STA. 4+50 TO STA. 15+00 ALONG THE RT. SIDE OF THE BARKER ACCESS ROAD TO TREAT 70% OF THE PROJECT EARTH DISTURBED AREA.

QUANTITIES AND GUIDANCE CAN BE FOUND ON SHEET 5.

TREATMENT CREDIT CALCULATION

STA. 4+50 TO 15+00
1050' LENGTH

LEFT SIDE INSIDE R/W = 2.5'
PAVEMENT WIDTH = 20'
VEGETATED STRIP WIDTH = 19.5' AVG.
42' WIDTH

 $(1050' \times 42') \div 43,560 = 1.01 \text{ AC.}$

PROJECT DATA	
TOTAL AREA (RIGHT-OF-WAY)	1.51
PROJECT EARTH DISTURBED AREA	1.41
ESTIMATED CONTRACTOR EARTH DISTURBED AREA	0.07
NOI EARTH DISTURBING ACTIVITIES	1.48
IMPERVIOUS (PAVED) AREA FOR PRE-CONSTRUCTION SITE	0.1
IMPERVIOUS (PAVED) AREA FOR POST-CONSTRUCTION SITE	0.82
RUNOFF COEFFICIENT FOR PRE-CONSTRUCTION SITE	0.53
RUNOFF COEFFICIENT FOR POST-CONSTRUCTION SITE	0.72
HISTORICAL LAND USE	UNUSED USACE PROPERTY
IMMEDIATE RECEIVING WATERS	OHIO RIVER
SUBSEQUENT RECEIVING WATERS	OHIO RIVER
USGS QUADRANT NO.	WILLOW ISLAND 2019
LATITUDE	39°21'35"N
LONGITUDE	81°19'36"W



PROJECT SITE PLAN
BARKER HOUSE ACCESS ROAD

WAS-7-32.15

10
27

BMP TYPE	LATITUDE (BEGIN)	LONGITUDE (BEGIN)	LATITUDE (END)	LONGITUDE (END)	EDA TREATMENT CREDIT (AC.)	TREATMENT REQUIRED (AC.)
VEGETATED FILTER STRIP	39°21'36.1"N	81°19'33"W	39°31'32.2"N	81°19'42.3"W	1.01	0.99