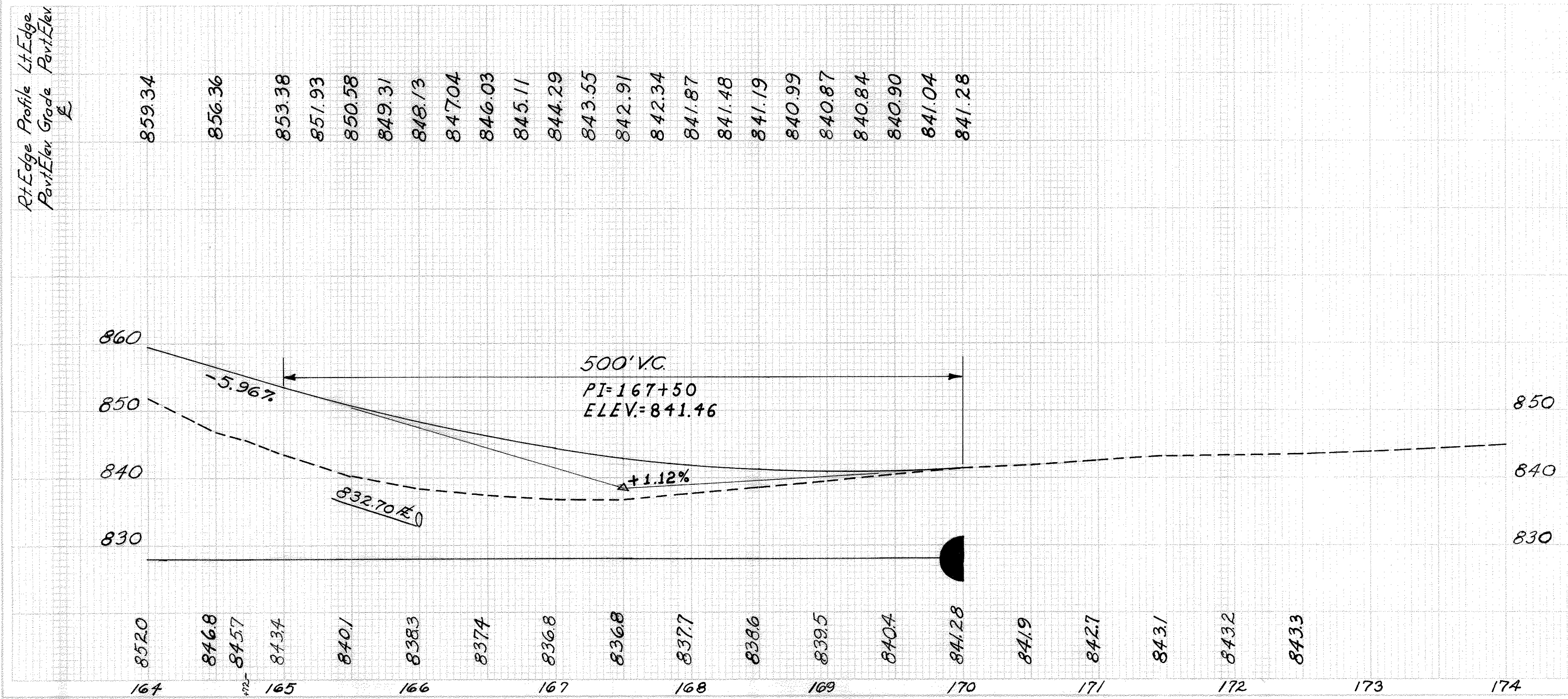
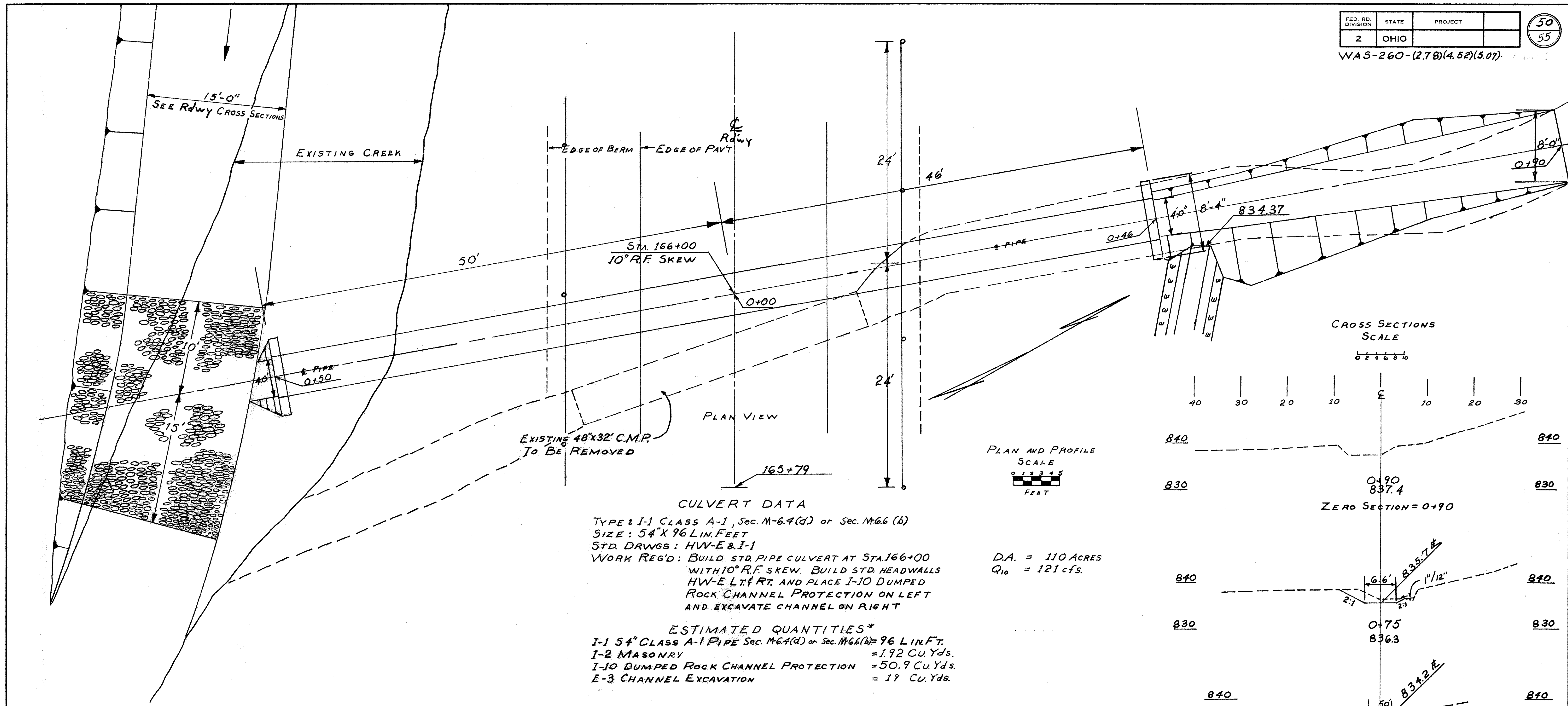


B.M. ~ E lev. 843.55
Spike in 14" Scymore
+0' Right Sta. 170+40



REF. NO.	STATION TO STATION	SIDE	ESTIMATED QUANTITIES
IR	164+00 - 165+03	Lt.	32
2R	159+74	E	32
3R	165+79 - 166+27	Rt.	19
4R	165+56 - 168+28	Lt.	528
1D	164+00 - 166+05	Rt.	238
2D	166+00	E	19
3D	165+66 - 168+50	Lt.	528
3D	164+25 - 169+75	Lt.	238
IP	165+50 (7' to H. Drive)	Lt.	36.3
TOTALS			
			96
			192
			51
			201
			423



CULVERT DATA

TYPE: I-1 CLASS A-1, Sec. M-6.4(d) or Sec. M-6.6(b)
 SIZE: 54" X 96 LIN. FEET
 STD. DRNGS: HW-E & I-1
 WORK REG'D: BUILD STD. PIPE CULVERT AT STA. 166+00 WITH 10° R.F. SKEW. BUILD STD. HEADWALLS HW-E LT. & RT. AND PLACE I-10 DUMPED ROCK CHANNEL PROTECTION ON LEFT AND EXCAVATE CHANNEL ON RIGHT

D.A. = 110 ACRES
 Q₁₀ = 121 cfs.

ESTIMATED QUANTITIES*

I-1 54" CLASS A-1 PIPE Sec. M-6.4(d) or Sec. M-6.6(b) = 96 LIN. FT.
 I-2 MASONRY = 1.92 Cu. Yds.
 I-10 DUMPED ROCK CHANNEL PROTECTION = 50.9 Cu. Yds.
 E-3 CHANNEL EXCAVATION = 19 Cu. Yds.

* Quantities carried to Plan-Profile Sheet 9

