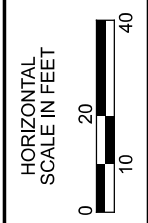


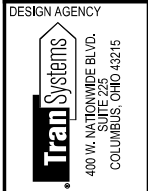
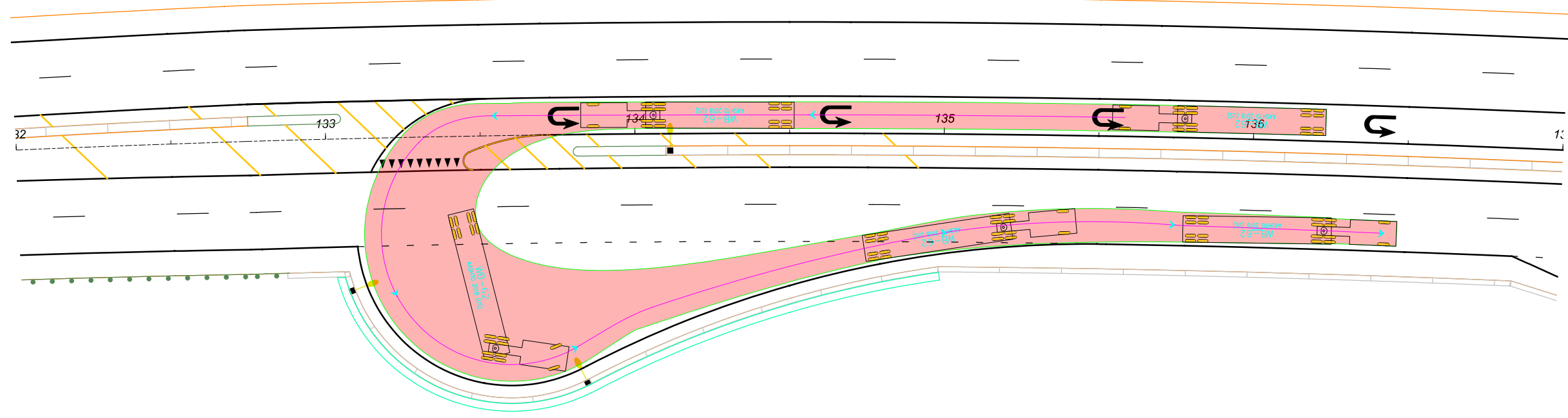
DESIGN AGENCY	
Tran Systems 400 W. NATIONWIDE BLVD. SUITE 225 COLUMBUS, OHIO 43215	
DESIGNER	
MSW	
REVIEWER	
GHM MM-DD-YY	
PROJECT ID	
101439	
SHEET	TOTAL
T.01	16

SR-21 AT CLINTON - SOUTH U-TURN
 TURNING TEMPLATES - SU-30 DESIGN VEHICLE



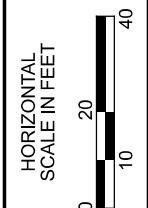
WAY-021-0.00

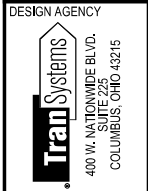
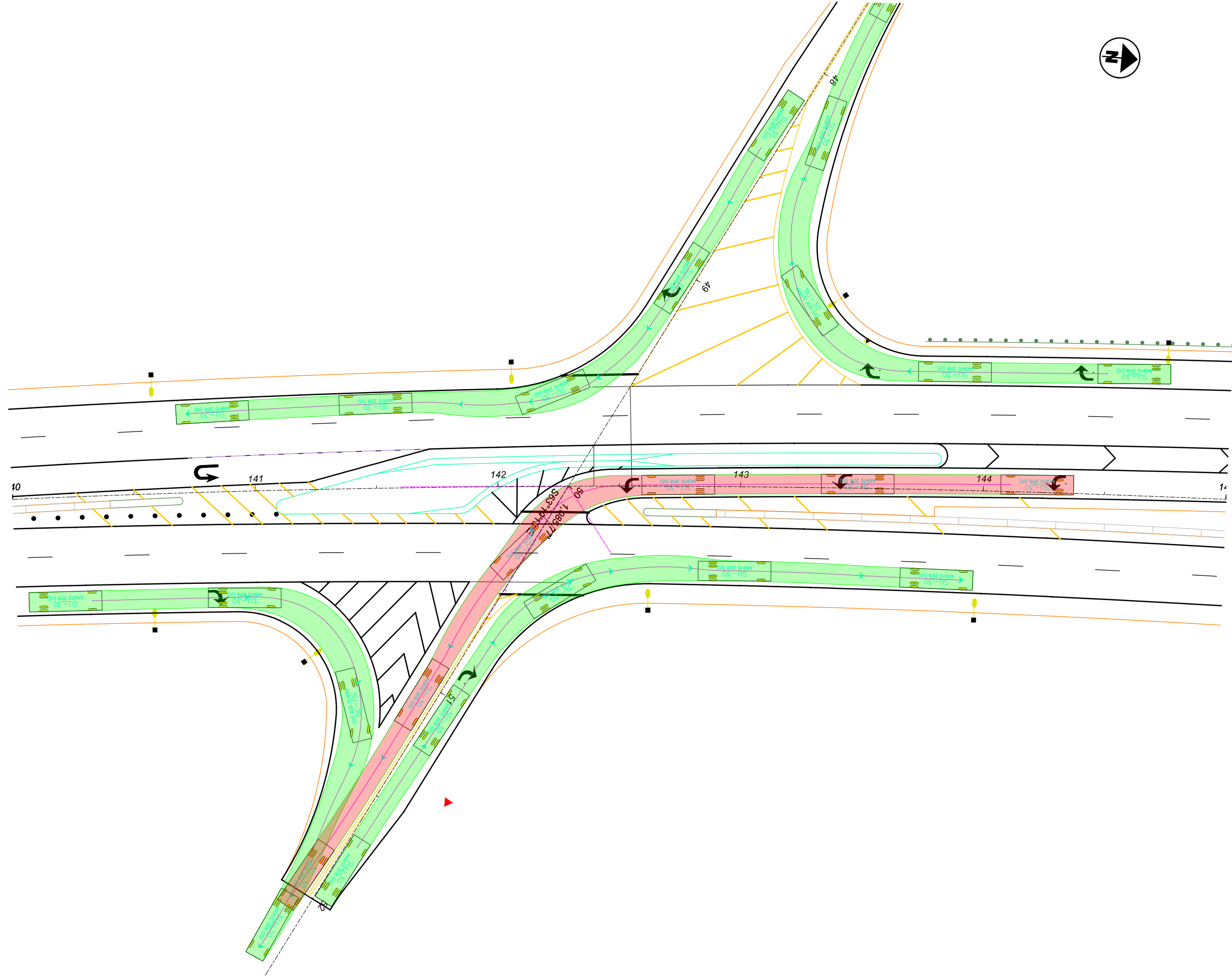
MODEL: CLX_SR-21 - Clinton lb [Sheet] PAPERSIZE: ITx11 (in.) DATE: 10/15/2021 TIME: 11:35:00 AM USER: mswht
pw:\\hq-pw\nt01a-e-transyscorp.com\transyscorp-pw\Documents\Projects\2020\C0403\403200056\Design\400-Engineering\Roadway\Sheets\101439_Gp999.dgn



DESIGN AGENCY
MSW
REVIEWER
GHM MM-DD-YY
PROJECT ID
101439
SHEET TOTAL
T.02 16

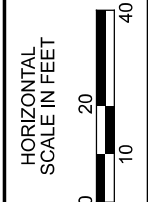
SR-21 AT CLINTON - SOUTH U-TURN
TURNING TEMPLATES - WB-62 CHECK VEHICLE

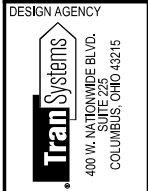
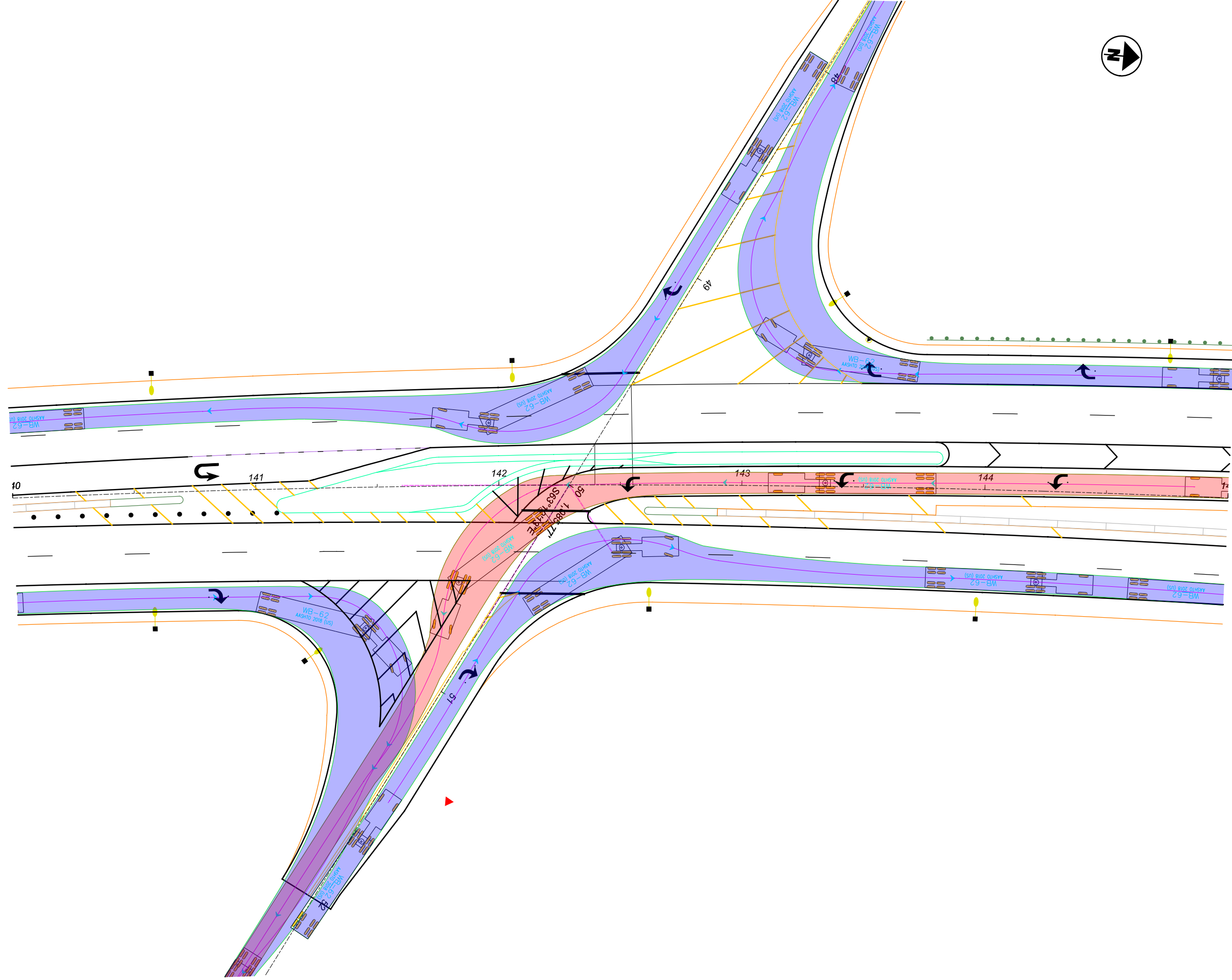




DESIGNER	MSW
REVIEWER	GHM MM-DD-YY
PROJECT ID	101439
SHEET	T.03
TOTAL	16

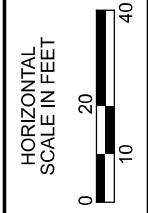
SR-21 AT CLINTON - INTERSECTION
 TURNING TEMPLATES - SU-30 DESIGN VEHICLE

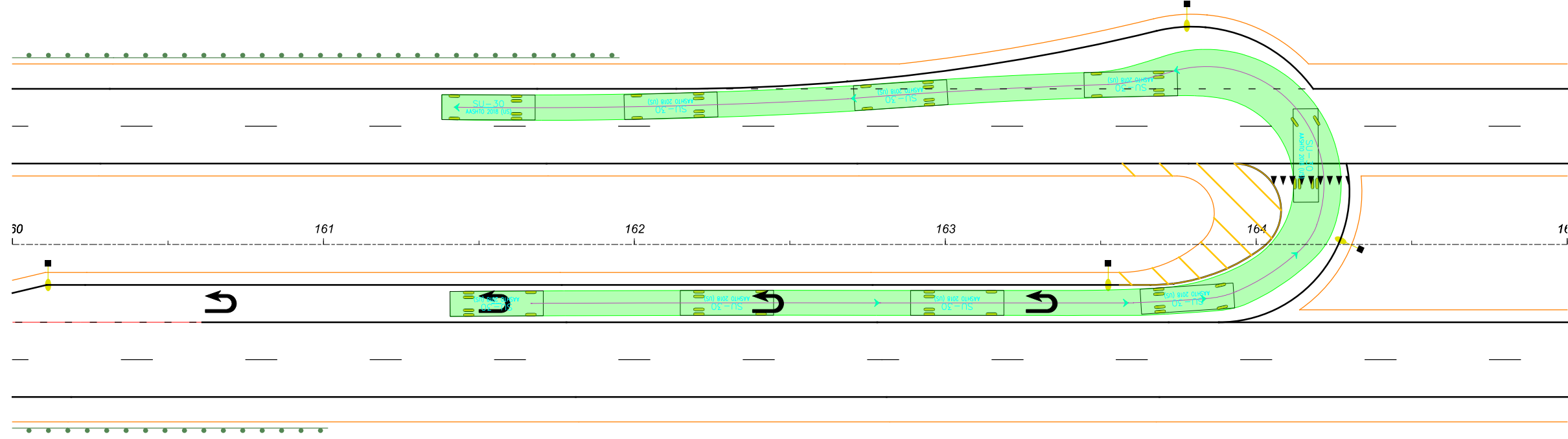




DESIGNER	MSW
REVIEWER	GHM MM-DD-YY
PROJECT ID	101439
SHEET	TOTAL
T.04	16

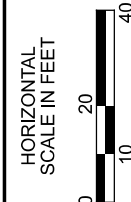
SR-21 AT CLINTON - INTERSECTION
 TURNING TEMPLATES - WB-62 CHECK VEHICLE

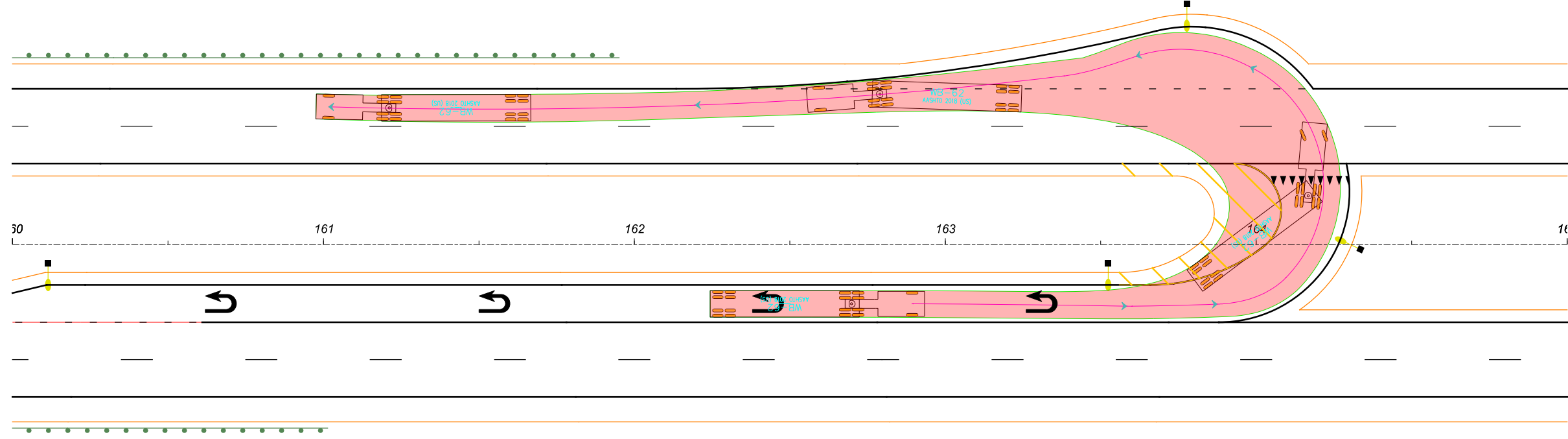




DESIGNER	MSW
REVIEWER	GHM MM-DD-YY
PROJECT ID	101439
SHEET	T.05
TOTAL	16

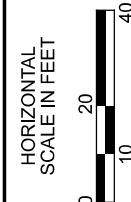
SR-21 AT CLINTON - NORTH U-TURN
 TURNING TEMPLATES - SU-30 DESIGN VEHICLE

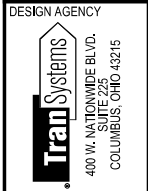
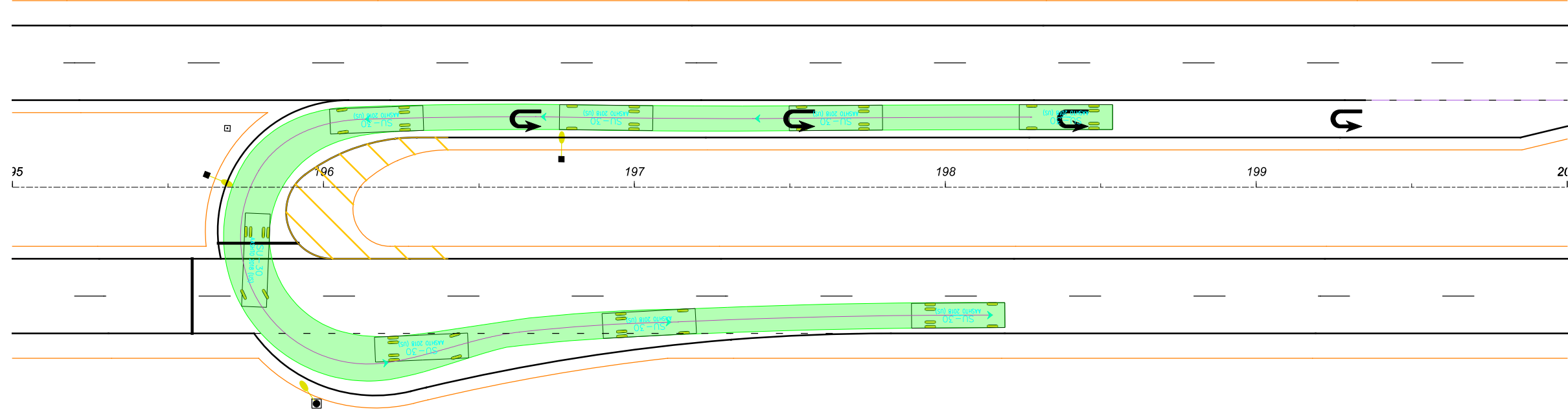




DESIGNER	MSW
REVIEWER	GHM MM-DD-YY
PROJECT ID	101439
SHEET	T.06
TOTAL	16

SR-21 AT CLINTON - NORTH U-TURN
 TURNING TEMPLATES - WB-62 CHECK VEHICLE

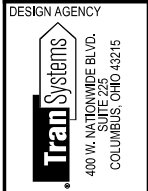
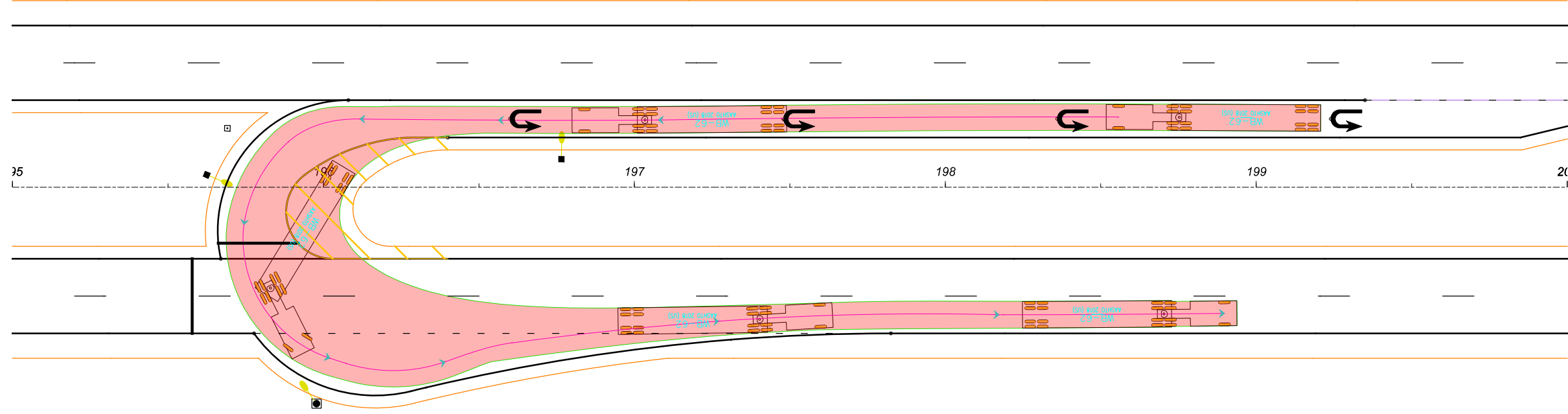




DESIGNER	MSW
REVIEWER	GHM MM-DD-YY
PROJECT ID	101439
SHEET	T.07
TOTAL	16

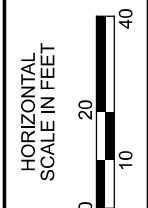
SR-21 AT EDWARDS - SOUTH U-TURN
 TURNING TEMPLATES - SU-30 DESIGN VEHICLE

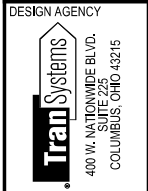
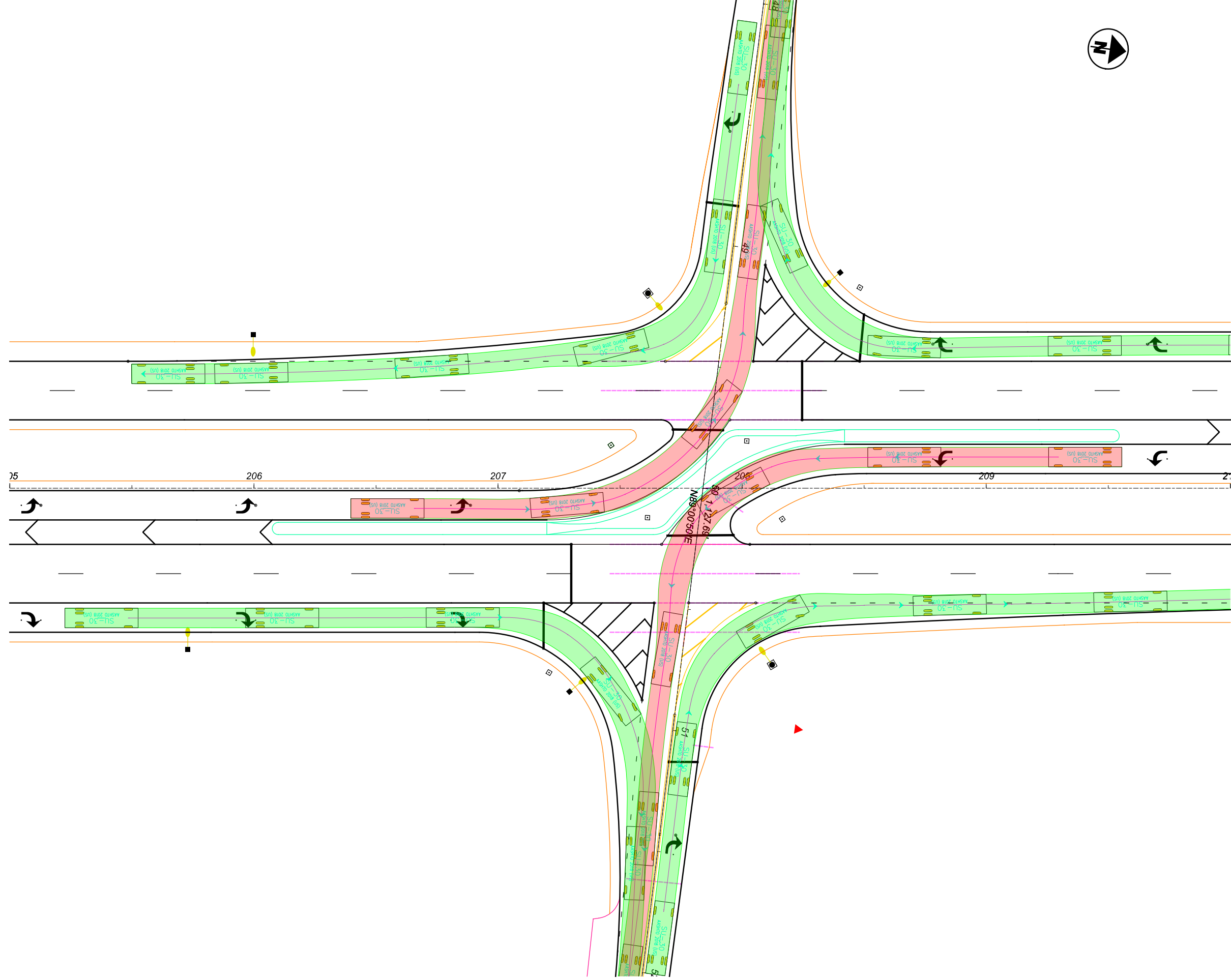




DESIGNER	
MSW	
REVIEWER	
GHM MM-DD-YY	
PROJECT ID	
101439	
SHEET	TOTAL
T.08	16

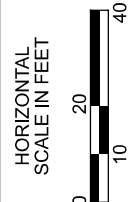
SR-21 AT EDWARDS - SOUTH U-TURN
TURNING TEMPLATES - WB-62 CHECK VEHICLE

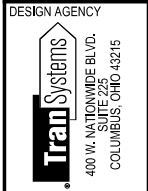
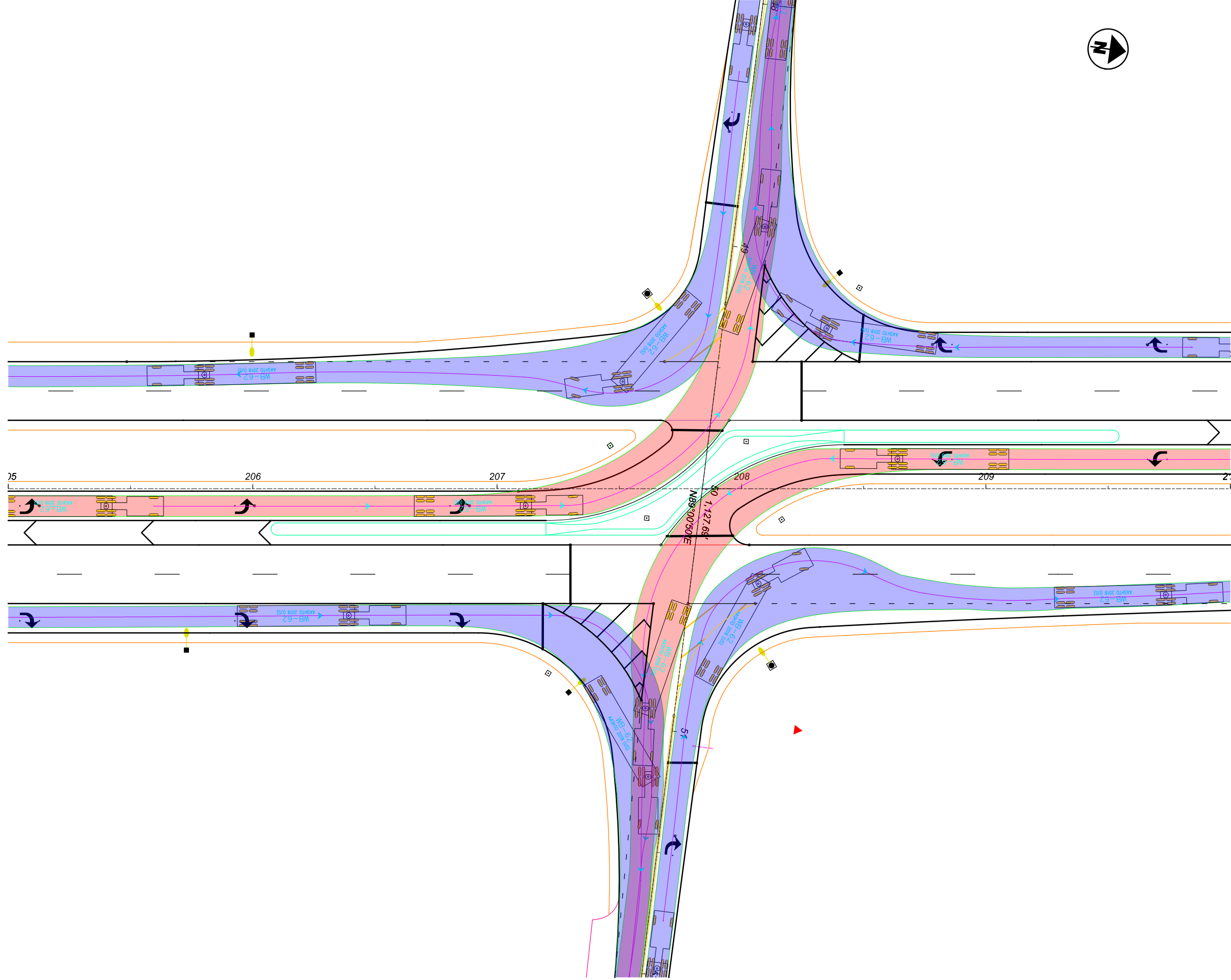




DESIGN AGENCY	
MSW	
REVIEWER	
GHM MM-DD-YY	
PROJECT ID	
101439	
SHEET	TOTAL
T.09	16

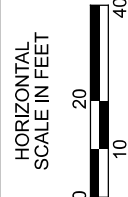
SR-21 AT EDWARDS - INTERSECTION
 TURNING TEMPLATES - SU-30 DESIGN VEHICLE

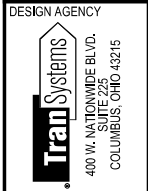
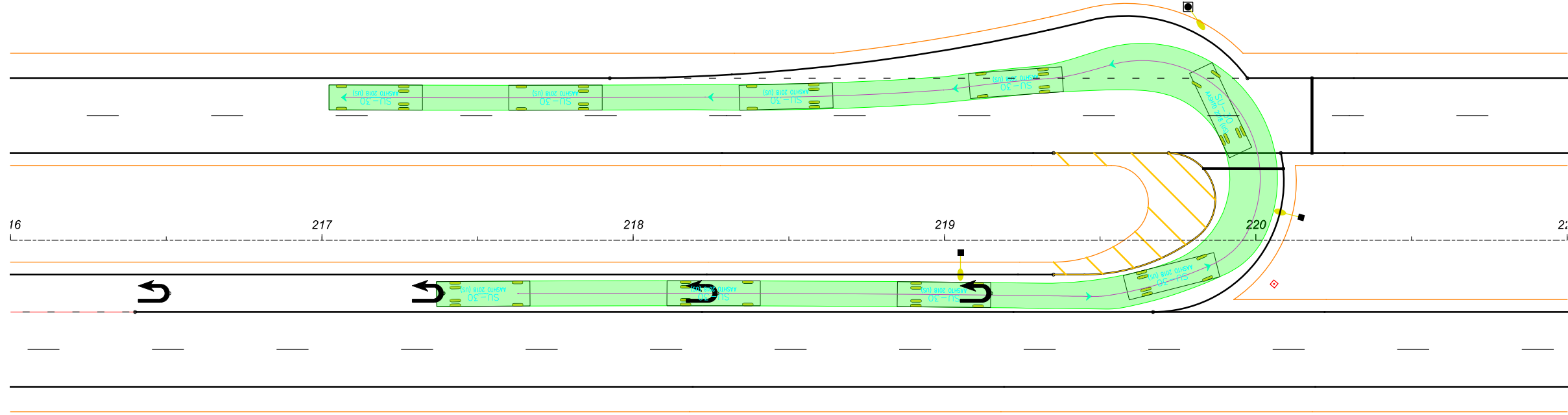




DESIGNER	MSW
REVIEWER	GHM MM-DD-YY
PROJECT ID	101439
SHEET	TOTAL
P.10	16

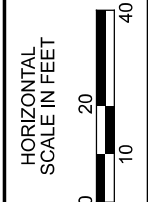
SR-21 AT EDWARDS - INTERSECTION
 TURNING TEMPLATES - WB-62 CHECK VEHICLE

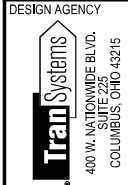
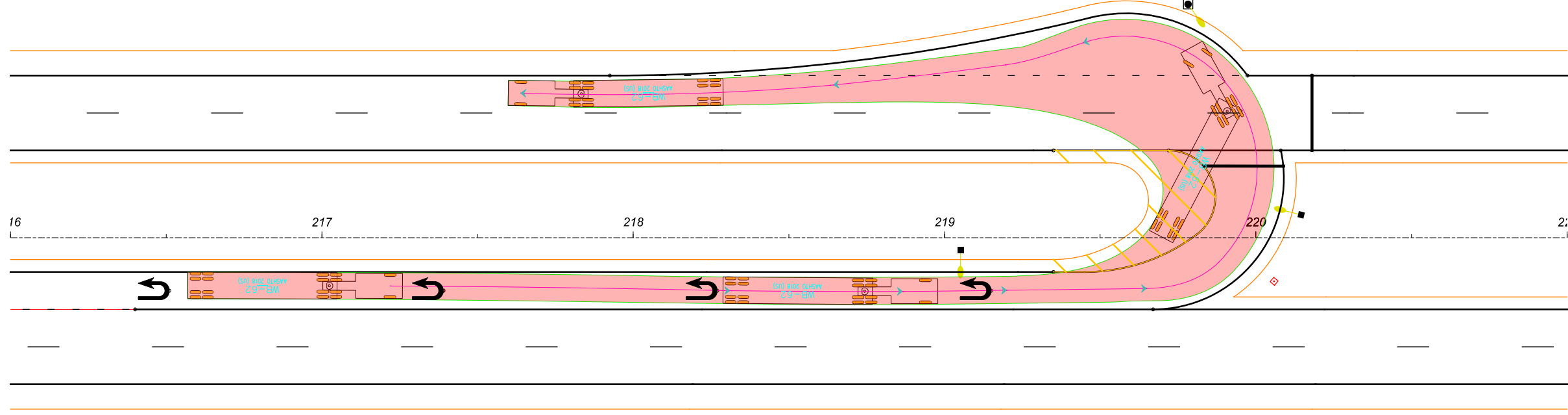




DESIGNER	MSW
REVIEWER	GHM MM-DD-YY
PROJECT ID	101439
SHEET	TOTAL
P.11	16

SR-21 AT EDWARDS - NORTH U-TURN
TURNING TEMPLATES - SU-30 DESIGN VEHICLE

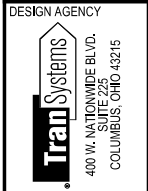
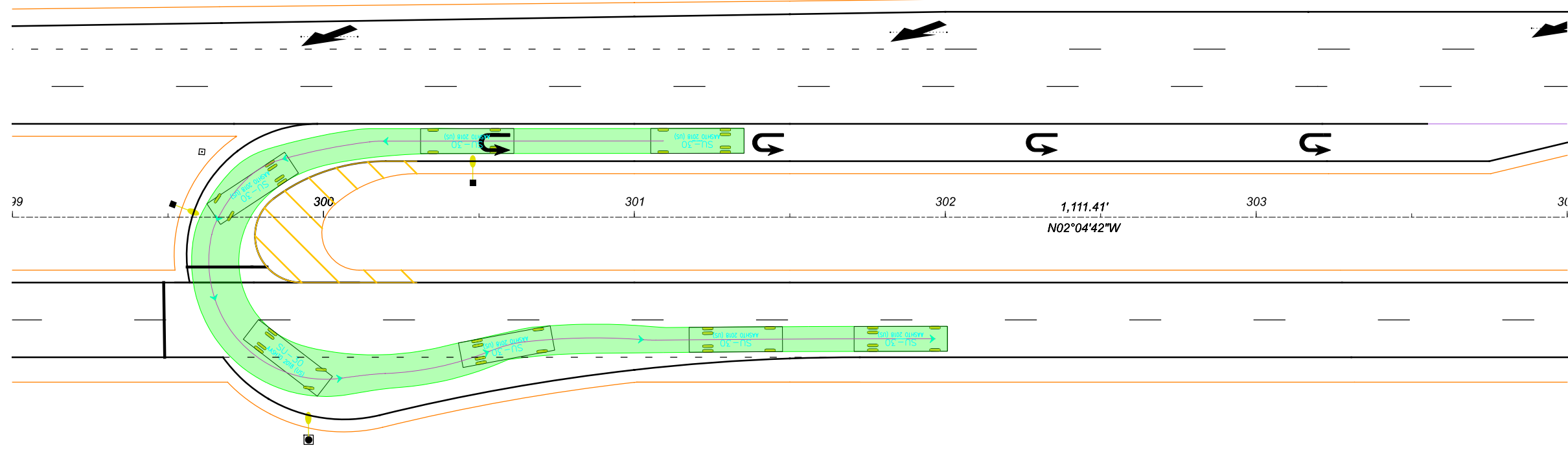




DESIGNER	
MSW	
REVIEWER	
GHM MM-DD-YY	
PROJECT ID	
101439	
SHEET	TOTAL
P.12	16

SR-21 AT EDWARDS - NORTH U-TURN
 TURNING TEMPLATES - WB-62 CHECK VEHICLE





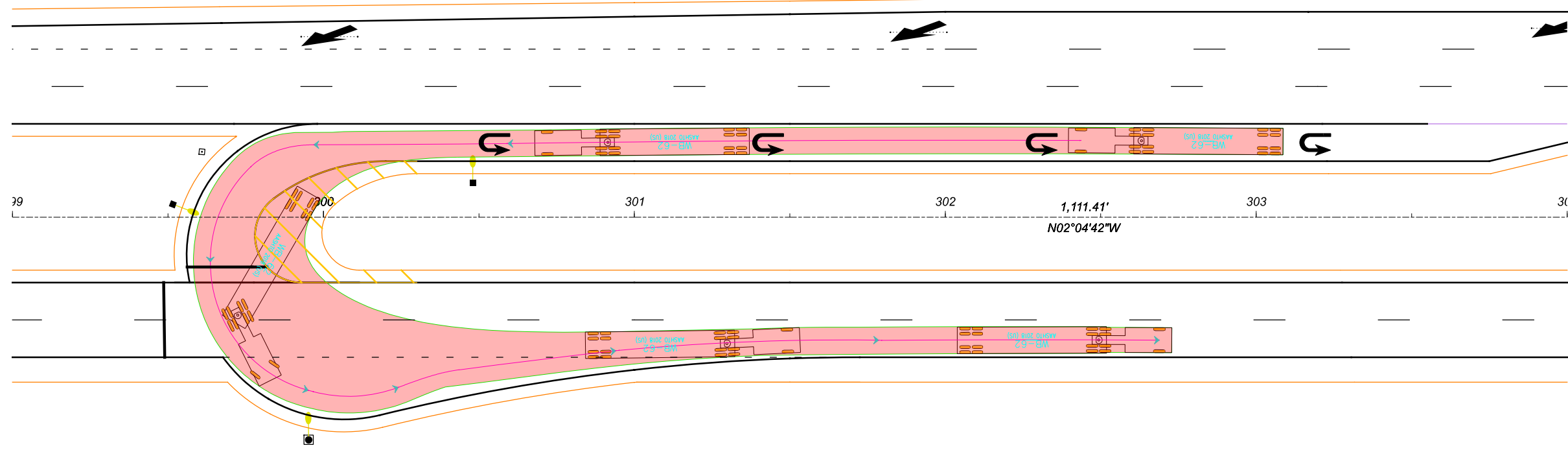
DESIGNER	
MSW	
REVIEWER	
GHM MM-DD-YY	
PROJECT ID	
101439	
SHEET	TOTAL
P.13	16

SR-21 AT EASTERN - SOUTH U-TURN
TURNING TEMPLATES - SU-30 DESIGN VEHICLE



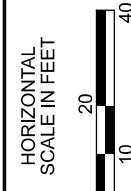
WAY-021-0.00

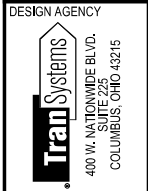
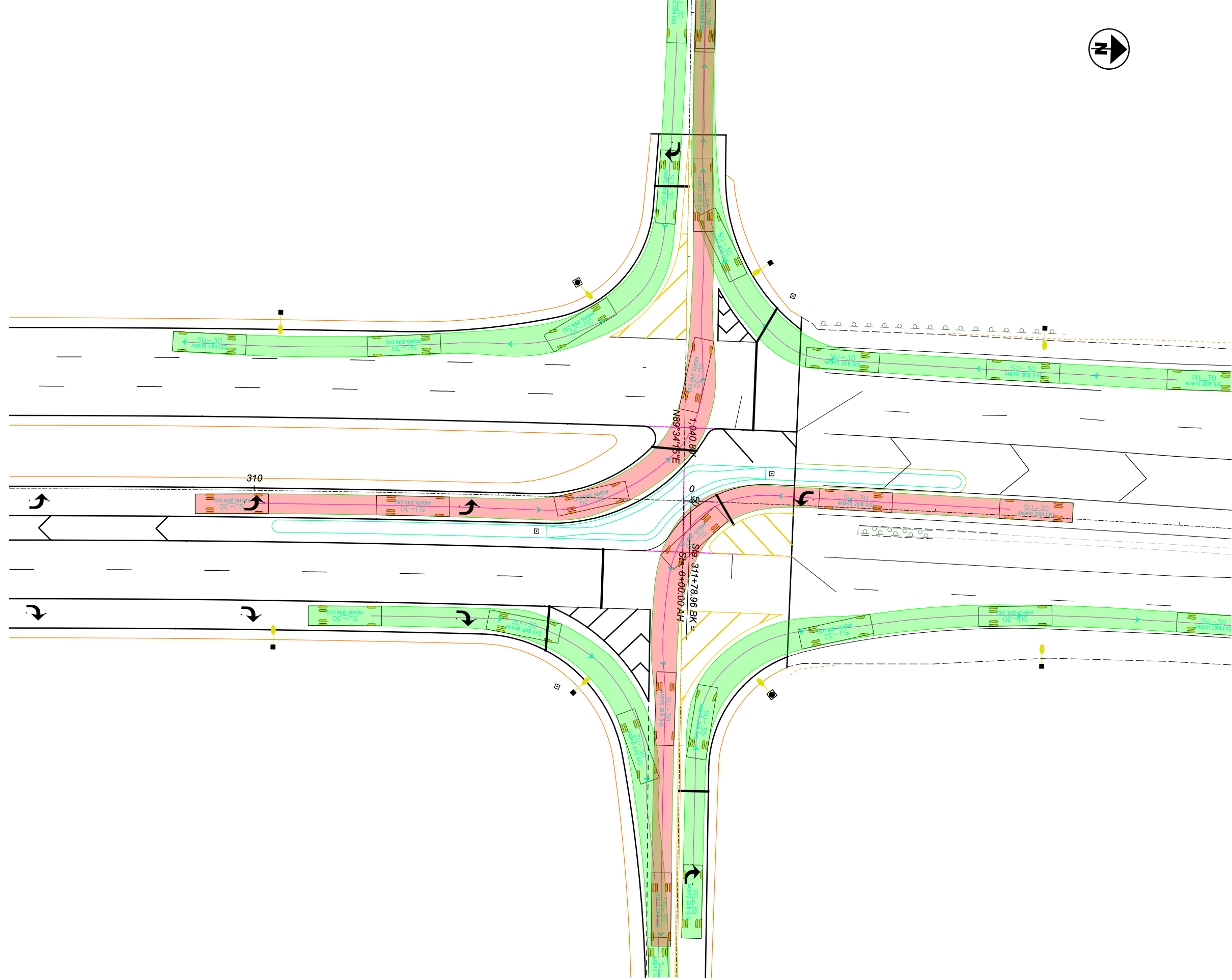
MODEL: CLX_SR-21 - Eastern lb [Sheet] PAPER/SIZE: 17x11(in.) DATE: 10/15/2021 TIME: 11:35:07 AM USER: mswhttt
pw:\\hq-pw\h01a-e-transyscorp.com\transyscorp-pw\Documents\Projects\2020\CO403\403200056\Design\400-Engineering\Roadway_Sheets\101439_Gp999.dgn



DESIGNER	
MSW	
REVIEWER	
GHM MM-DD-YY	
PROJECT ID	
101439	
SHEET	TOTAL
P.14	16

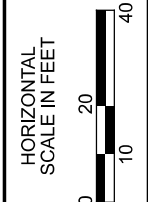
SR-21 AT EASTERN - SOUTH U-TURN
TURNING TEMPLATES - WB-62 CHECK VEHICLE

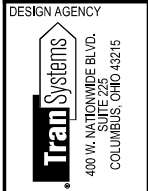
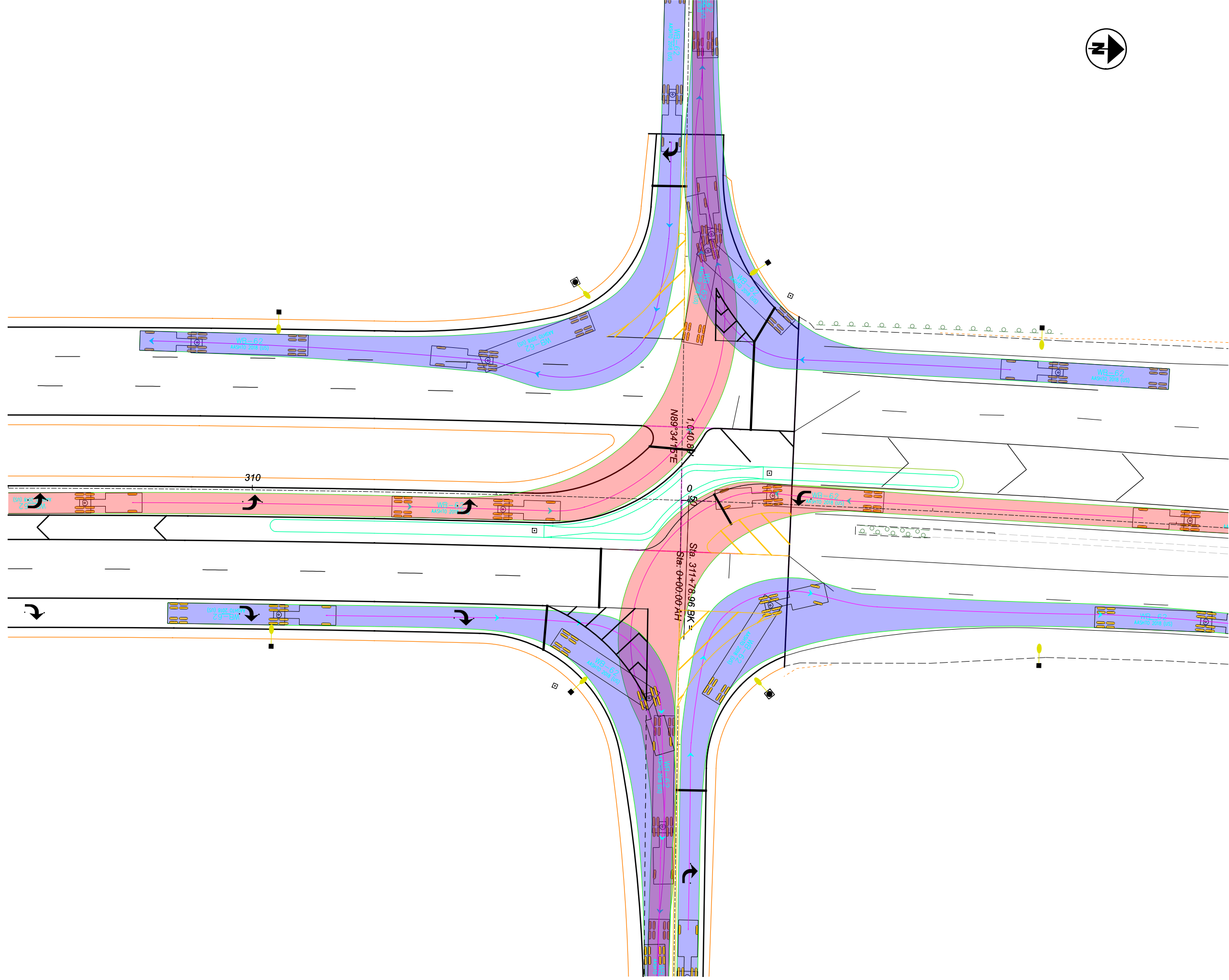




DESIGNER	MSW
REVIEWER	GHM MM-DD-YY
PROJECT ID	101439
SHEET	TOTAL
P.15	16

SR-21 AT EASTERN - INTERSECTION
 TURNING TEMPLATES - SU-30 DESIGN VEHICLE





DESIGNER	MSW
REVIEWER	GHM MM-DD-YY
PROJECT ID	101439
SHEET	TOTAL
P.16	16

SR-21 AT EASTERN - INTERSECTION
 TURNING TEMPLATES - WB-62 CHECK VEHICLE

