

STATE OF OHIO
DEPARTMENT OF HIGHWAYS

F-642 (2)

FED. RD. DIV. NO.	STATE	FED. AID PROJECT	FISCAL YEAR	1
2	OHIO	F-642	1947	85

WILLIAMS COUNTY
S.H. 717 Sec. A & B (pt.)
S.H. 309 Sec. C (pt.)
S.H. 304 Sec. A (pt.)
WIL - 384 - 0.00

BRYAN-EDGERTON ROAD S.H. 309 Sec. C (pt.)
EDGERTON-RIDGEVILLE CORNERS ROAD S.H. 717 Sec. A & B (pt.)
BRYAN-Ft. WAYNE ROAD S.H. 304 Sec. A (pt.)

WILLIAMS COUNTY
St. JOSEPH & CENTER TOWNSHIPS

PART No 2

For Part No 1 see
Williams Co., S.H. 309, Sec. C (Pt.)

CONVENTIONAL SIGNS

STATE LINE	-----
COUNTY LINE	-----
TOWNSHIP LINE	-----
SECTION LINE	-----
CENTER LINE	-----
PROPERTY LINE	-----
CITY OR VILLAGE LINE	-----
FENCE LINE	-----
STEAM RAILROAD	-----
POLE LINE	-----
GUARD RAIL	-----
DRAIN PIPE, NEW	-----
DRAIN PIPE, OLD	-----

INDEX OF SHEETS

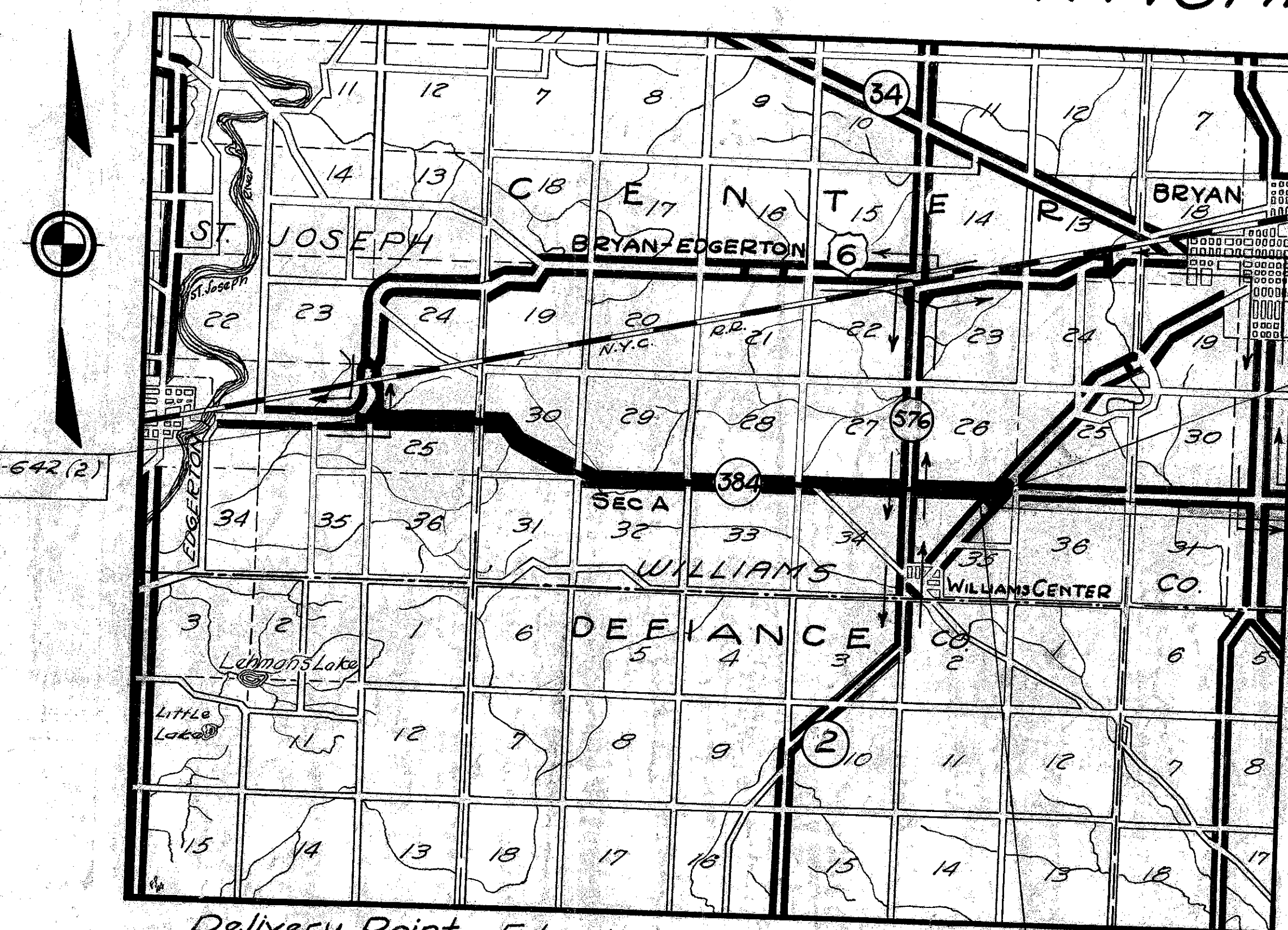
TITLE SHEET	Sheet	1
TYPICAL SECTION		2
GENERAL NOTES		3
PLAN & PROFILE		4-35
SUPERELEVATION TABLES		36
CROSS SECTIONS		37-67
INTERSECTION DETAILS		68-72
DRIVE DETAILS		72
STRUCTURE DETAILS		73-81
TREE SCHEDULE		82-83
SUB-SUMMARIES		83-84
PAYEMENT COMPUTATIONS		85
GENERAL SUMMARY		85

LINE DATA

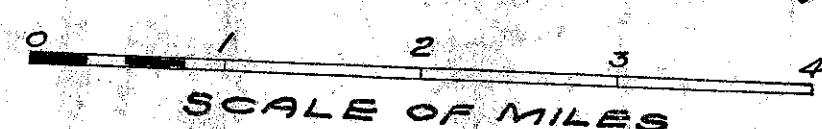
Begin F.A.P F-642(2) Part 2 ~ Sta 81+50
End F.A.P F-642(2) Part 2 ~ Sta 403+18.09
Net Length of F.A.P F-642(2) Part 2 = 32,162.09 Lin. Ft.
Net Length of F.A.P F-642(2) Part 1 = 6,600.18 Lin. Ft.
Net Length of F.A.P F-642(2) = 38,762.27 Lin. Ft. or 7.342 Miles

Begin Approach on S.H. 304 ~ Sta. 64+00
End Approach on S.H. 304 ~ Sta 74+40
Net Length of Approach on S.H. 304 = 1040 Lin. Ft. or 0.197 Miles

Begin Approach Work on S.H. 717 ~ Sta 403+45.51
End Approach Work on S.H. 717 ~ Sta 411+00
Net Length of Approach Work = 754.49 Lin. Ft. or 0.142 Miles (on S.H. 717)
Net Length of Work = 40,561.54 Lin. Ft. or 7.682 Miles



LOCATION PLAN



PORTION TO BE IMPROVED
STATE HIGHWAYS
OTHER HIGHWAYS
DETOURS SHOWN THUS

SCALES

PLAN 1" = 50'
PROFILE - HORIZONTAL 1" = 50'
PROFILE - VERTICAL 1" = 5'
CROSS SECTIONS 1" = 5'

The Standard Specifications of The State of Ohio, Department of Highways, including changes and Supplemental Specifications listed in the Proposal shall govern this improvement.
I hereby approve these plans and declare that the making of this improvement will require the closing of traffic of the highway and that a detour will be provided as shown on the plans and estimates.

End APPROACH
Sta 411+00, S.H. 717, Sec B (Pt.)
Sta 74+40 S.H. 304, Sec A (Pt.)

The Right-of-Way necessary for this improvement will be provided by the State of Ohio.

Begin APPROACH on S.H. 304
Sta 64+00

Approved Wilford B. Robison
Date 3-15-47 Division Deputy Director

Approved _____
Date _____ Chief Engineer, Bureau of Maintenance

Approved W. Hogue
Date 5-6-47 Chief Engineer, Bureau of Bridges & R.R. Crossings

Approved George J. Thoeniger
Date 5-15-47 Chief Engineer, Bureau of Location & Design

Approved _____
Date _____ First Asst. Director & Chief Engineer

Approved Henry D. Shaffer
Date 5-15-47 Director of Highways.



Recommended for Approval

District Engineer
Public Roads Administration
Federal Works Agency

Approved

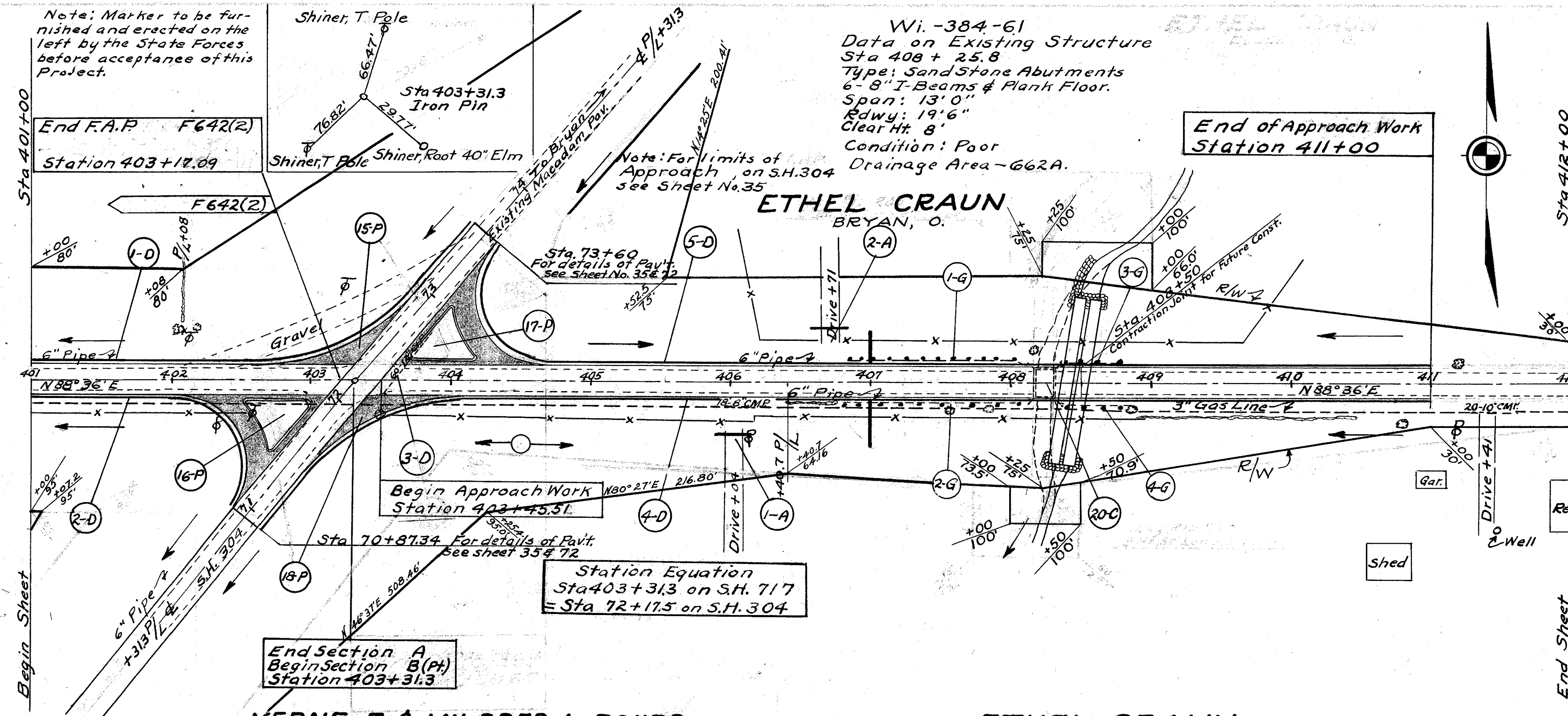
Division Engineer
Public Roads Administration
Federal Works Agency

FILE NO	WILLIAMS COUNTY
	S.H. 717 SECTION A & B (PT.)
	S.H. 309 SECTION C (PT.)
	S.H. 304 SECTION A (PT.)
	DATE OF LETTING 1947
	CONTRACT NO.

STANDARD DRAWINGS			
*G-8.07	2-1-47	L-3	2-1-47
*I-1, 2, 3, 4 & 5	2-20-45	*B-T-71R	2-1-47
*T-8 C.B. 1-2A & B	12-15-41	*B-T-50-70-71E	12-1-43
*T-8 C.B. 2-2A & B	12-15-41	*S-27 P.C. 3	2-20-45
*T-8 C.B. 1-3A & 1-4	12-15-41		
*T-8 C.B. 2-3A & 2-4	12-15-41		
*T-12	7-1-42		

SUPPLEMENTAL SPECIFICATIONS	
M-110.23 Rev. 1-3-47	
SS-112 Rev. 11-6-46	

WILLIAMS COUNTY
S.H. 717 SEC. A & B (Pt.)
S.H. 309 SEC. C (Pt.)
S.H. 304 SEC. A (Pt.)



ROADWAY DRAINAGE "D"

Ref. No.	Station	Side	I-4 Pipe Under Drains Lin. Ft.	I-4 Pipe Under Drains Outlets Lin. Ft.	I-5 Pipe Specials Each 6"x6" Lin. Ft.	E-12 Pipe Remove & Store Lin. Ft.	S-22 Remove & Dispose Portions Existing Structure Cu. Yd.
1-D	401+00 to 404+14	Lt.	353	6"			
2-D	401+00 to 402+43	Rt.	205	6"			
F642(2) Totals			558				
3-D	403+49 to 403+80	X-Over				60	1.2
4-D	402+64 to 411+00	Rt.	888		1		
5-D	404+34 to 411+00	Lt.	750		1		
Approach Totals			1638	56	2	60	1.2

STRUCTURES 20' SPAN AND UNDER "C"

Ref. No.	Station	Type	Size	Remarks
20-C	408+45	Pipe Culvert	2-120' x 96"	For details see sheet No. 80

SIDE APPROACHES "A"

Ref. No.	Station	Side	I-17 Aggregate Sq. Yds.	I-1 Drive Pipe Lin. Ft.	E-12 Pipe Remove & Store Lin. Ft.	Remarks
1-A	406+04	Rt.	142	24	18	Drive Pipe to be moved West Approximately 26' at the direction of the Engineer's Charge.
2-A	406+71	Lt.	645	30	8"	
Approach Totals			787	54	18	

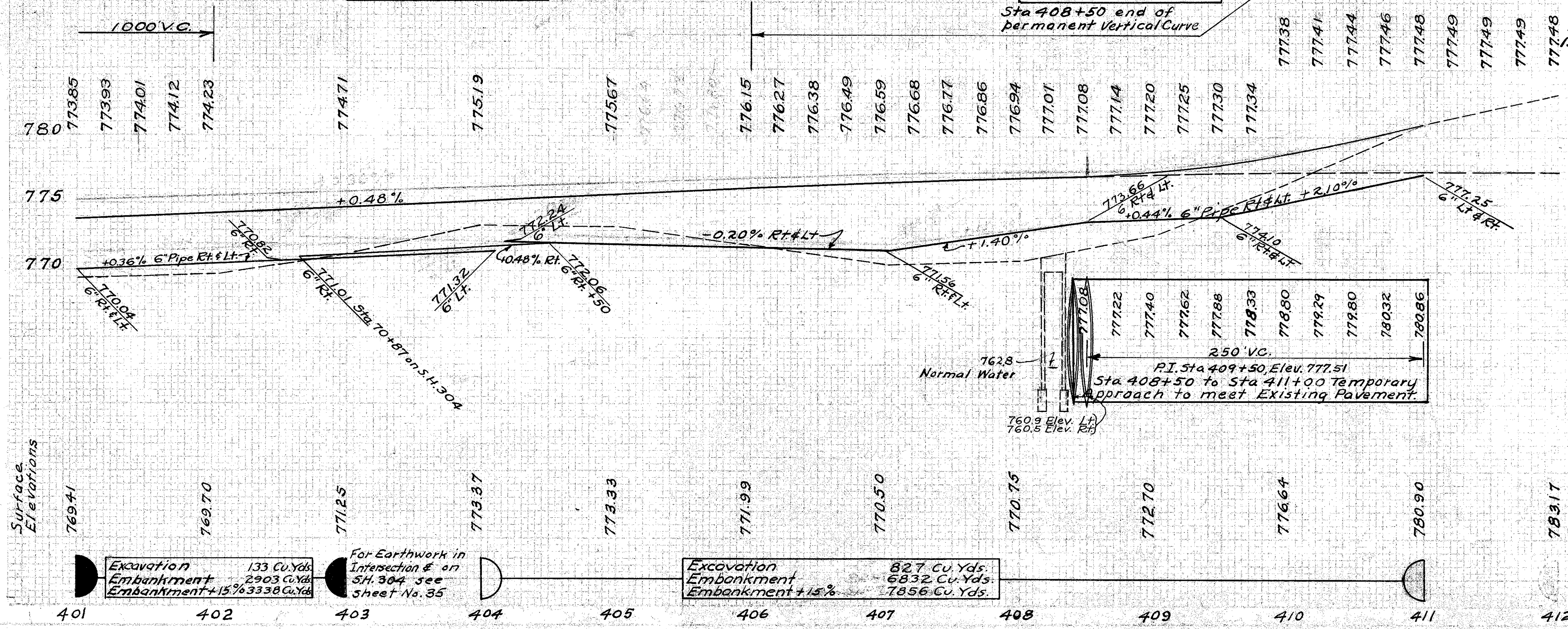
VERNE E. & MILDRED L. ROYER
BRYAN, O.

ETHEL CRAUN
BRYAN, O.

B.M. #54 R.R. Spike
In N.W. Root of 36' Elm
23' Rt. Sta. 403+49
Elevation 771.60.

B.M. #55 @ on S.W. Cor. of
S.W. Wing of Bn # 384-61
Right of Sta. 408+10
Elevation 769.22.

Future 1200' V.C.
P.I. Sta. 412+00
Elev. 779.03

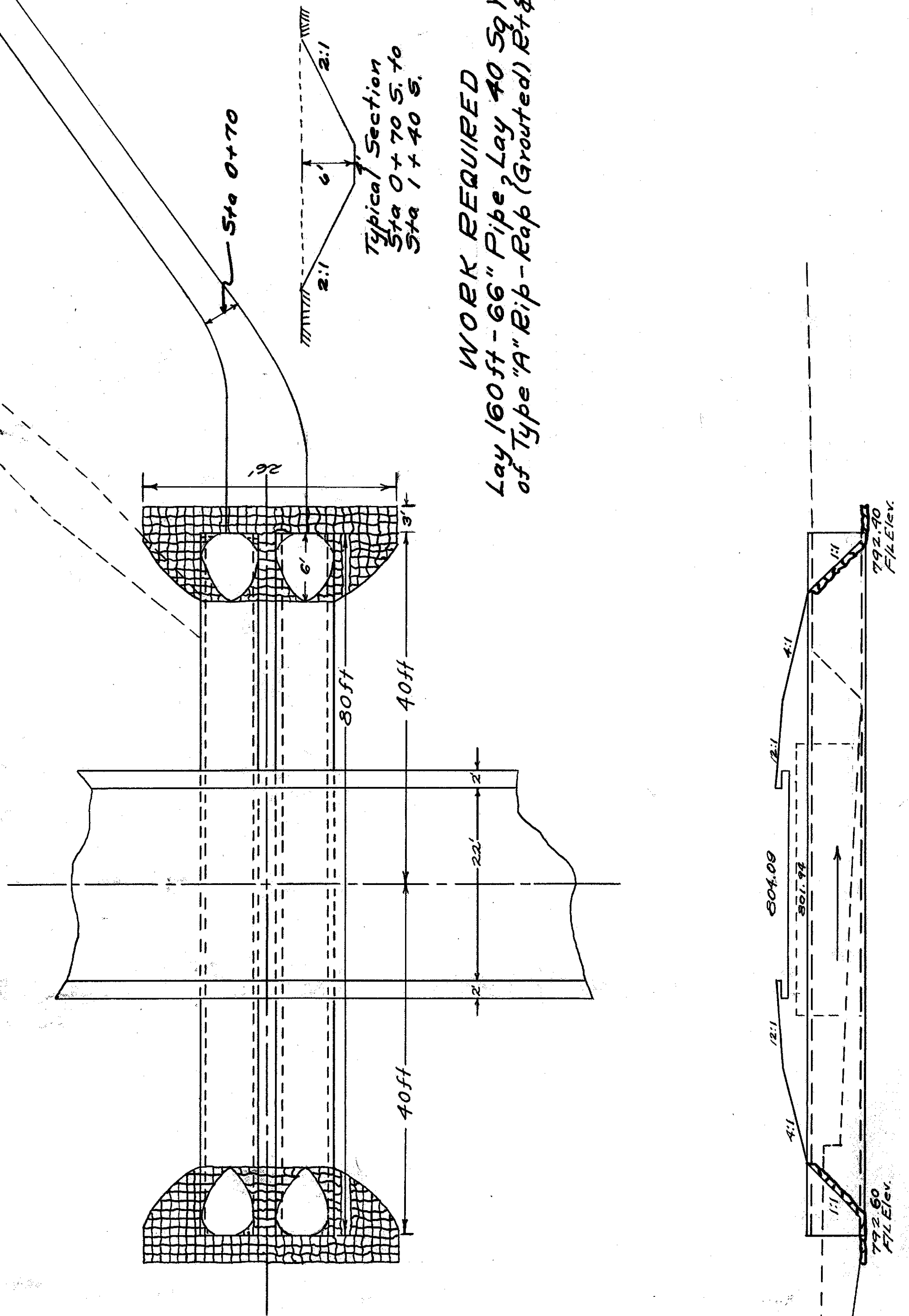


Note: 15-P, 16-P, 17-P & 18-P For details of Extra Pavement see sheet No. 72

GUARD RAIL "G"

Ref. No.	Station	Side	I-15 Guard Rail Remove & Store Lin. Ft.	Remarks
1-G	406+84 to 408+18	Lt.	134	Wood
2-G	406+84 to 408+18	Rt.	134	Wood
3-G	408+32 to 408+80	Lt.	48	Wood
4-G	408+32 to 408+80	Rt.	48	Wood
Approach Total			364	

STRUCTURE 16-C
STATION 350+75
Scale 1 inch = 10 feet

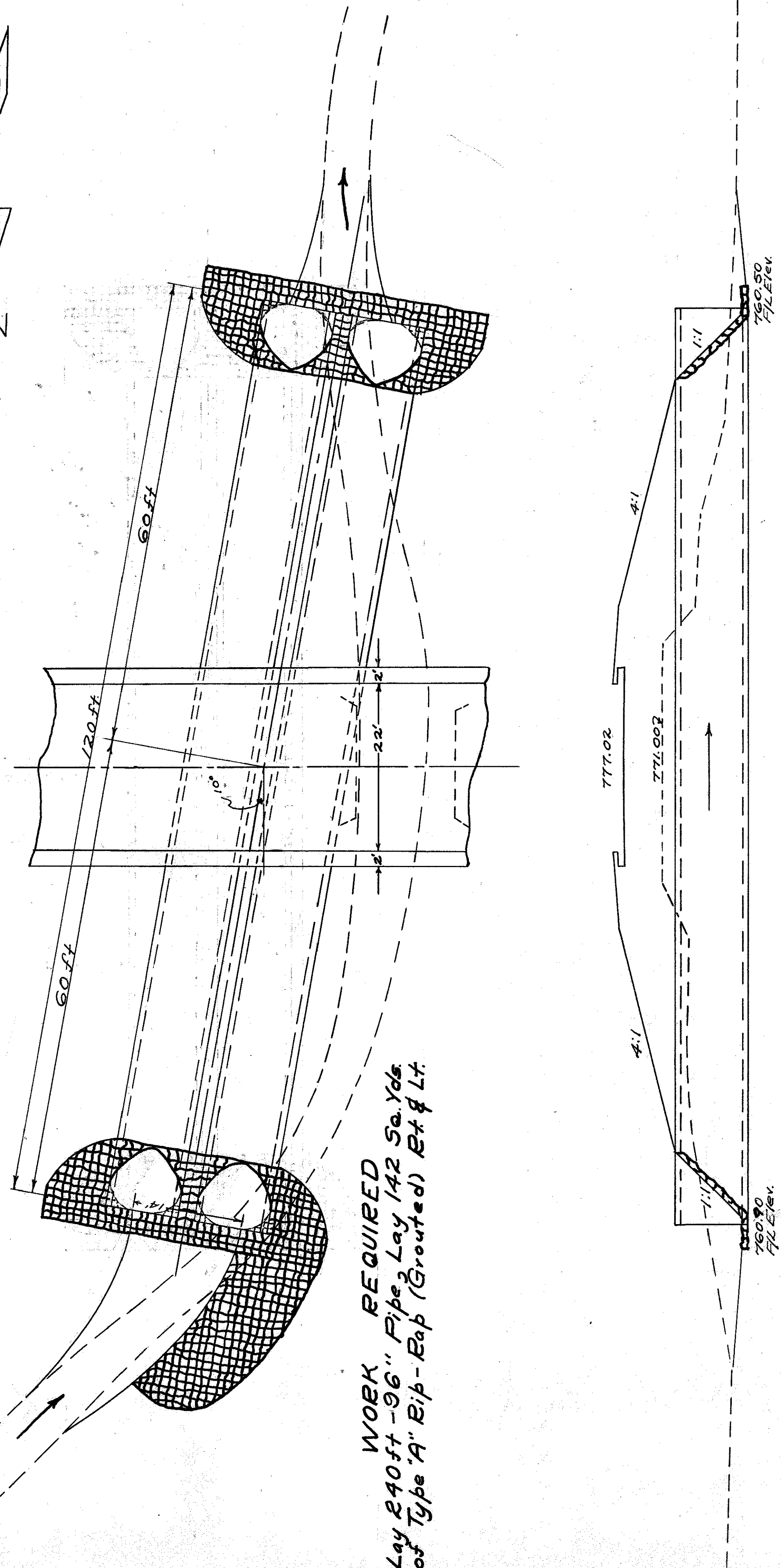


WORK REQUIRED
Lay 160 ft - 66" Pipe Lay 40 Sq Yds
of Type "A" Rip-Rap (Groued) Ext & Lt.

ESTIMATED QUANTITIES
E-2 Excavation For Structures (Und) 158 Cu Yds.
E-3 Channel Excavation 490 Cu Yds
S-24 Removal of Existing Structures Lump Sum
S-27 66" Pipe for Roadway Culvert 160 FT
I-10 Rip-Rap Type "A" (Groued) 40 Sq Yd

Std. Dwg. ~ S-27, P.C. 3

STRUCTURE 20-C
STATION 408+45
Scale 1 inch = 10 feet



WORK REQUIRED
Lay 240 ft - 96" Pipe Lay 142 Sq. Yds.
of Type "A" Rip-Rap (Groued) Ext & Lt.

ESTIMATED QUANTITIES
E-2 Excavation For Structures 172 Cu Yds.
E-3 Channel Excavation 76 Cu Yds
S-24 Removal of Existing Structures Lump Sum
S-27 96" Pipe for Roadway Culvert 240 FT
I-10 Rip-Rap Type "A" (Groued) 142 Sq Yds.

Std. Dwg. ~ S-27, P.C. 3

FED. RD. DIVISION	STATE	PROJECT	FISCAL YEAR
2	OHIO	F 642 (2)	1947

WILLIAMS COUNTY
S. H. 717 SEC. A & B (P+)
S. H. 309 SEC. C (P+)
S. H. 304 SEC. A (P+)

30
35

6. J. S. 2/6/47