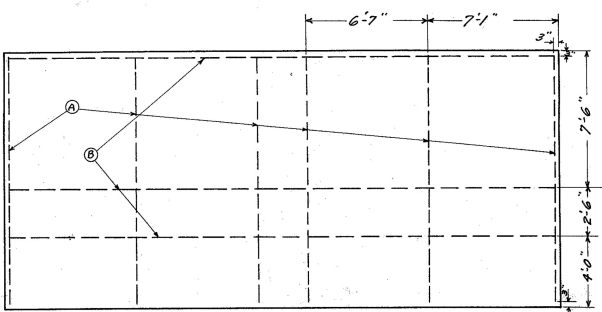
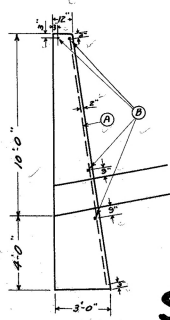


Encase new pipe in conc. per std. plan for 20" V.P.

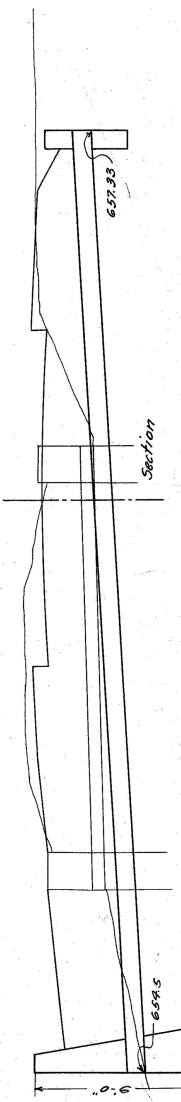
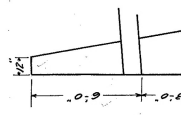
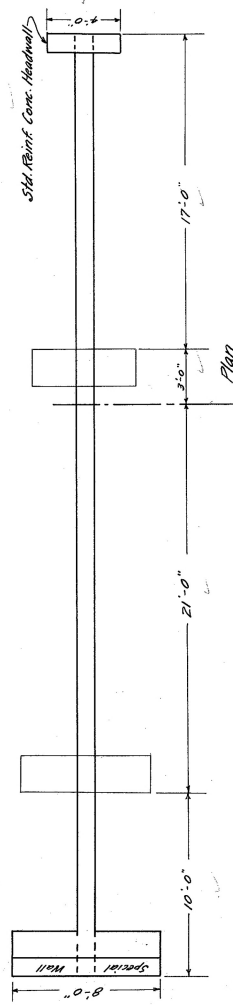
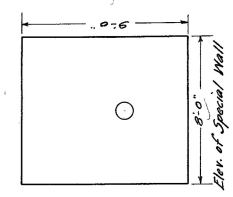
ESTIMATE OF QUANTITIES
 Excavation 15 cu. yds.
 Concrete (1:2-4) 32.2 cu. yds.
 Steel 115 lbs.
 20" Cor. I.P. 34 FT.
 Con (1:3:6) 5.7 cu. yds.



Quantities in Special Headwall
 6 # bars $\frac{3}{8}$ " 13'-6" long.
 4 # " $\frac{3}{8}$ " 29'-6" long.
 Steel 95 lbs.
 Conc. (1:2-4) 31.1 cu. yds.

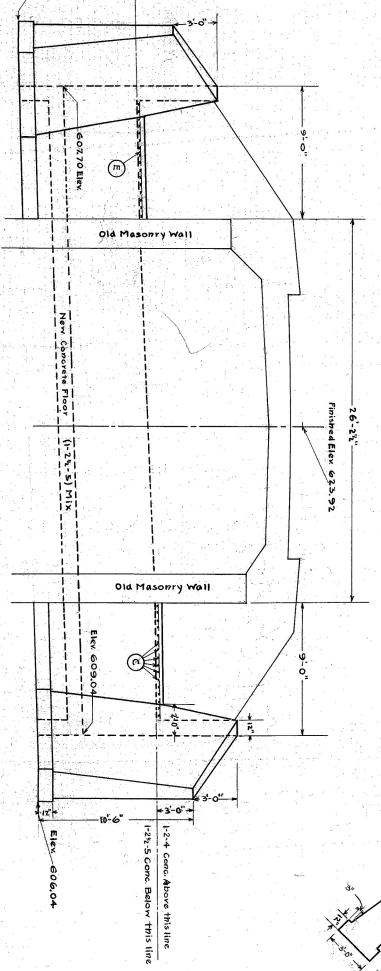
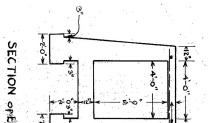
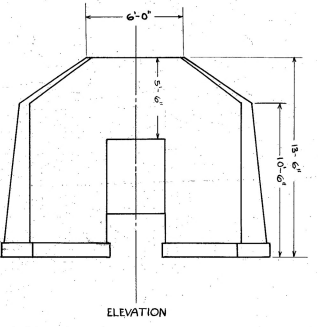
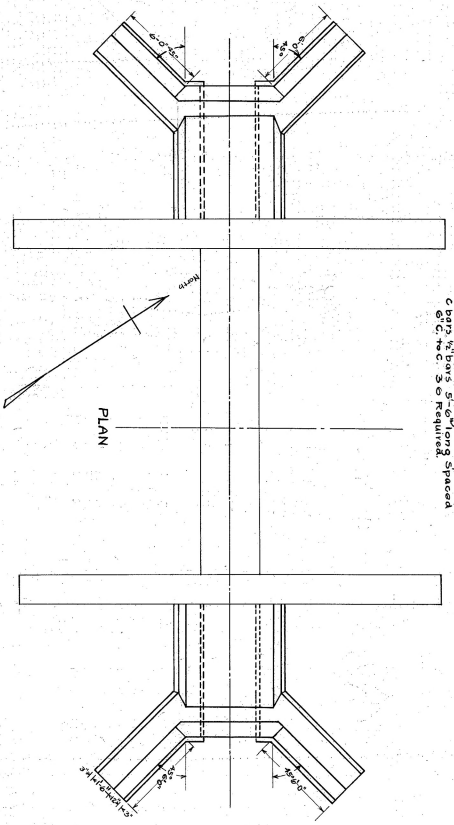


Sta. 196+44.
 Sec. A



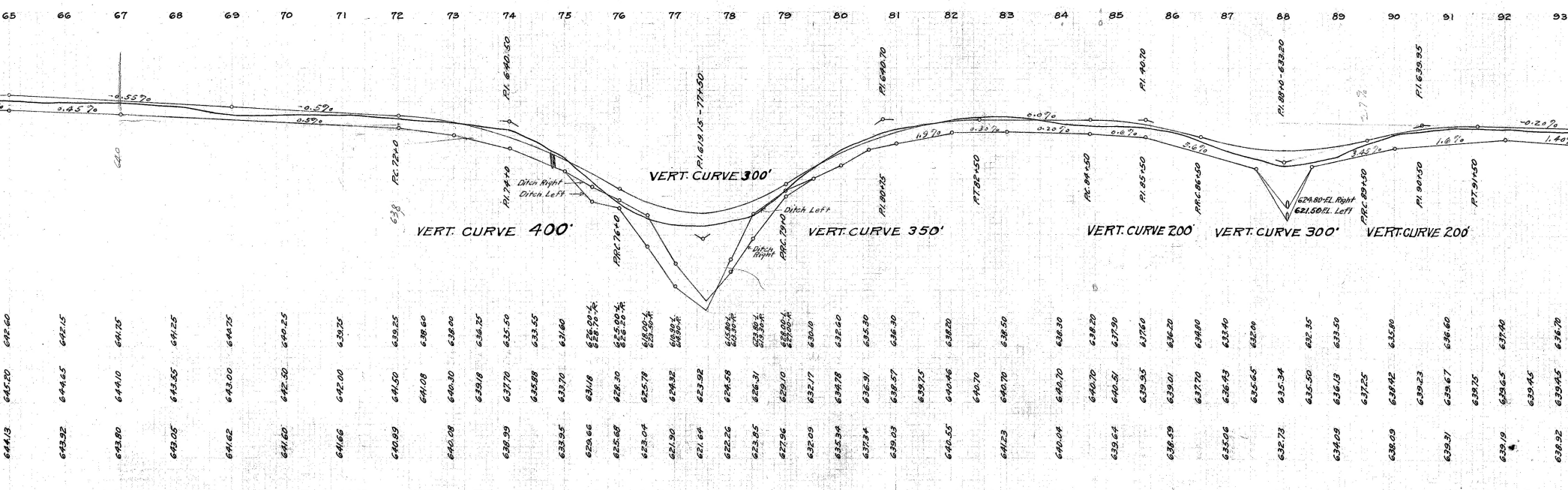
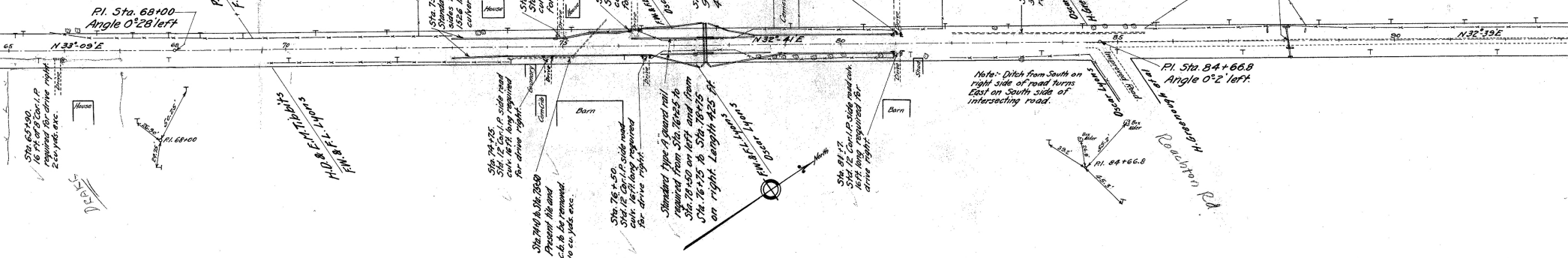
Sta. 200+00

Bar Schedule
 E bars, 1/2" dia, 13'-0" long, 4 Required
 C bars, 1/2" dia, 13'-0" long, 2 Required
 S/C, 1/2" dia, 2 Required
 S/C, 1/2" dia, 2 Required



ESTIMATE OF QUANTITIES
 16 Cu Yds Excavation
 1.5 Cu Yds concrete
 3890 cu Yds 1-3/4" concrete
 213 lbs reinforcing steel

12 Miles east of 64+00



64+00	64+05	64+10	64+15	64+20	64+25	64+30	64+35	64+40	64+45	64+50	64+55	64+60	64+65	64+70	64+75	64+80	64+85	64+90	64+95	65+00	
639.95	639.88	639.77	639.62	639.45	639.25	639.02	638.75	638.45	638.10	637.70	637.25	636.75	636.20	635.60	635.00	634.35	633.65	632.90	632.10	631.25	630.35

EXC. 112 CU. YDS.
EMB. +15% 133 CU. YDS.
BORROW 1 CU. YD.

EXC. 98 CU. YDS.
EMB. +15% 112 CU. YDS.
BORROW 1 CU. YD.

EXC. 1074 CU. YDS.
EMB. +15% 1235 CU. YDS.
BORROW 1 CU. YD.

EXC. 1066 CU. YDS.
EMB. +15% 1225 CU. YDS.
BORROW 1 CU. YD.

EXC. 499 CU. YDS.
EMB. +15% 574 CU. YDS.
BORROW 2 CU. YDS.

EXC. 352 CU. YDS.
EMB. +15% 405 CU. YDS.

LEFT				RIGHT			
Edge of Pavement	Width	Station	Grade	Width	Edge of Pavement	Station	Grade
660.91	9.00	195+82.45	661.11	9.00	660.31		
660.89	9.45	196+04.4	661.03	9.00	661.18		
660.86	10.30	196+32.45	661.06	9.00	661.48		
660.84	11.07	196+64.4	661.04	9.00	661.78		
660.81	11.40	196+96.45	661.01	9.00	662.09		
660.79	11.40	197+07	660.99	9.00	662.07		
660.77	11.07	197+32	660.97	9.00	661.71		
660.74	10.30	197+57	660.94	9.00	661.36		
660.72	9.45	197+82	660.92	9.00	661.01		
660.69	9.00	198+07	660.89	9.00	661.69		

326 Sq Yds. Extra Pavement

LEFT				RIGHT			
Edge of Pavement	Width	Station	GRADE	Width	Edge of Pavement	Station	GRADE
661.05	9.0	205+70.5	661.85	9.00	661.25		
661.60	9.0	208+95.5	661.89	10.50	661.09		
661.84	9.0	208+208	661.94	13.33	661.14		
662.36	9.0	208+455	661.99	15.83	661.19		
662.89	9.0	208+728	661.95	17.00	661.25		
662.95	9.0	207+055	661.91	17.00	661.31		
662.50	9.0	207+30.5	661.53	15.83	661.33		
662.00	9.0	207+55.5	661.56	13.33	661.36		
661.69	9.0	207+80.5	661.58	10.50	661.38		
661.41	9.0	208+05.5	661.61	9.00	661.41		

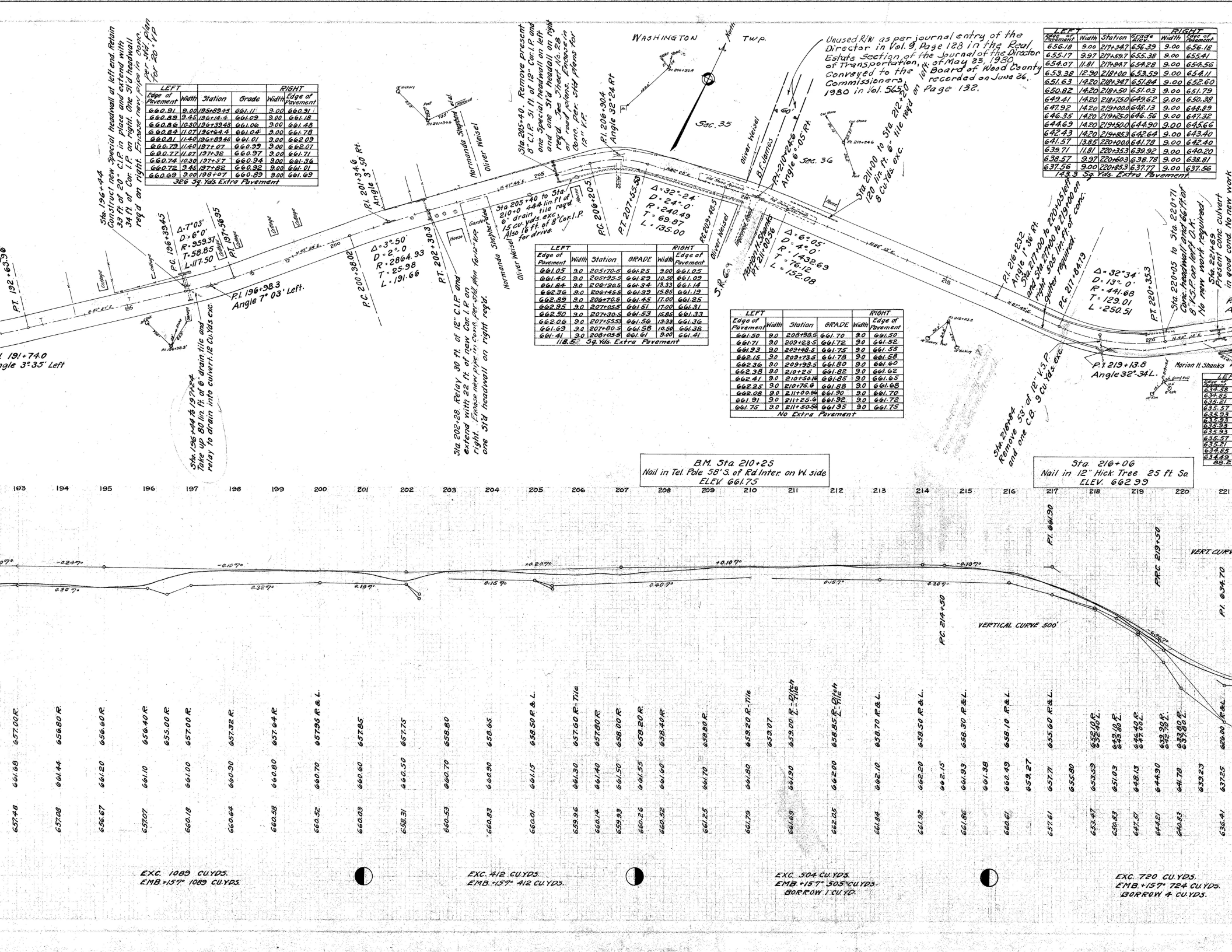
118.5 Sq Yds. Extra Pavement

LEFT				RIGHT			
Edge of Pavement	Width	Station	GRADE	Width	Edge of Pavement	Station	GRADE
661.50	9.0	208+95.5	661.70	9.0	661.59		
661.71	9.0	209+23.5	661.72	9.0	661.52		
661.93	9.0	209+88.5	661.75	9.0	661.59		
662.15	9.0	209+73.5	661.78	9.0	661.58		
662.36	9.0	209+20.5	661.80	9.0	661.60		
662.38	9.0	210+55	661.82	9.0	661.62		
662.41	9.0	210+50.6	661.85	9.0	661.65		
662.25	9.0	210+75.6	661.88	9.0	661.68		
662.08	9.0	211+00.9	661.90	9.0	661.70		
661.91	9.0	211+55.9	661.92	9.0	661.72		
661.75	9.0	211+80.9	661.95	9.0	661.75		

No Extra Pavement

LEFT				RIGHT			
Edge of Pavement	Width	Station	GRADE	Width	Edge of Pavement	Station	GRADE
656.18	9.00	217+34.7	656.39	9.00	656.18		
655.77	9.97	219+53.7	655.38	9.00	655.51		
654.07	11.81	219+84.7	654.28	9.00	654.56		
653.38	12.90	218+100	653.59	9.00	653.11		
651.63	14.20	218+24.7	651.64	9.00	652.60		
650.82	14.20	218+50.0	651.03	9.00	651.79		
649.41	14.20	218+75.0	649.62	9.00	650.38		
647.92	14.20	218+100.0	648.13	9.00	648.89		
646.35	14.20	218+250.0	646.56	9.00	647.32		
644.69	14.20	218+500.0	644.90	9.00	645.66		
642.43	14.20	218+823.0	643.24	9.00	643.40		
641.57	13.85	220+100.0	641.78	9.00	642.40		
639.71	11.81	220+233.0	639.92	9.00	640.20		
638.27	9.97	220+403.0	638.78	9.00	638.81		
637.51	9.00	220+633.0	637.77	9.00	637.56		

143.3 Sq Yds. Extra Pavement



EXC. 1089 CU.YDS.
EMB. +157' 1089 CU.YDS.

EXC. 412 CU.YDS.
EMB. +157' 412 CU.YDS.

EXC. 304 CU.YDS.
EMB. +157' 305 CU.YDS.
BORROW 1 CU.YD.

EXC. 720 CU.YDS.
EMB. +157' 724 CU.YDS.
BORROW 4 CU.YDS.

B.M. Sta 210+25
Nail in Tel. Pole 58' S. of Rd. Inter. on W. side
ELEV. 661.75

Sta. 216+06
Nail in 12" Hick Tree 25 ft So
ELEV. 662.99

Unused R/W as per journal entry of the Director in Vol. 9 Page 128 in the Real Estate section of the Journal of the Director of Transportation, of May 23, 1980 conveyed to the Board of Wood County Commissioners on 10/18/80 as recorded on June 26, 1980 in Vol. 565 Page 132.

Station 216+06
Remove 53' of 12" V.S.P. and one C.B. 9 Cu. Yds. exc.

Station 210+25
Relay 30 ft. of 12" C.I.P. and extend 23 ft. of 8" C.I.P. on right. Excise new pipe in center per city plan for 40' one 51/2 headwall on right req'd.

Station 202+28
Relay 30 ft. of 12" C.I.P. and extend 23 ft. of 8" C.I.P. on right. Excise new pipe in center per city plan for 40' one 51/2 headwall on right req'd.

Station 196+44 & 197+44
Take up 80 lin. ft. of 6" drain tile and relay to drain into culvert 12 Cu. Yds. exc.

Station 210+00 to 210+05
120 lin. ft. of 6" tile req'd on 10' R.O.W. 8' Curb. exc.

Station 210+05 to 210+71
Concrete headwall 66 ft. long 8' V.S.P. on left C.A. No new work required. Site 221+65 in good cond. No new work.