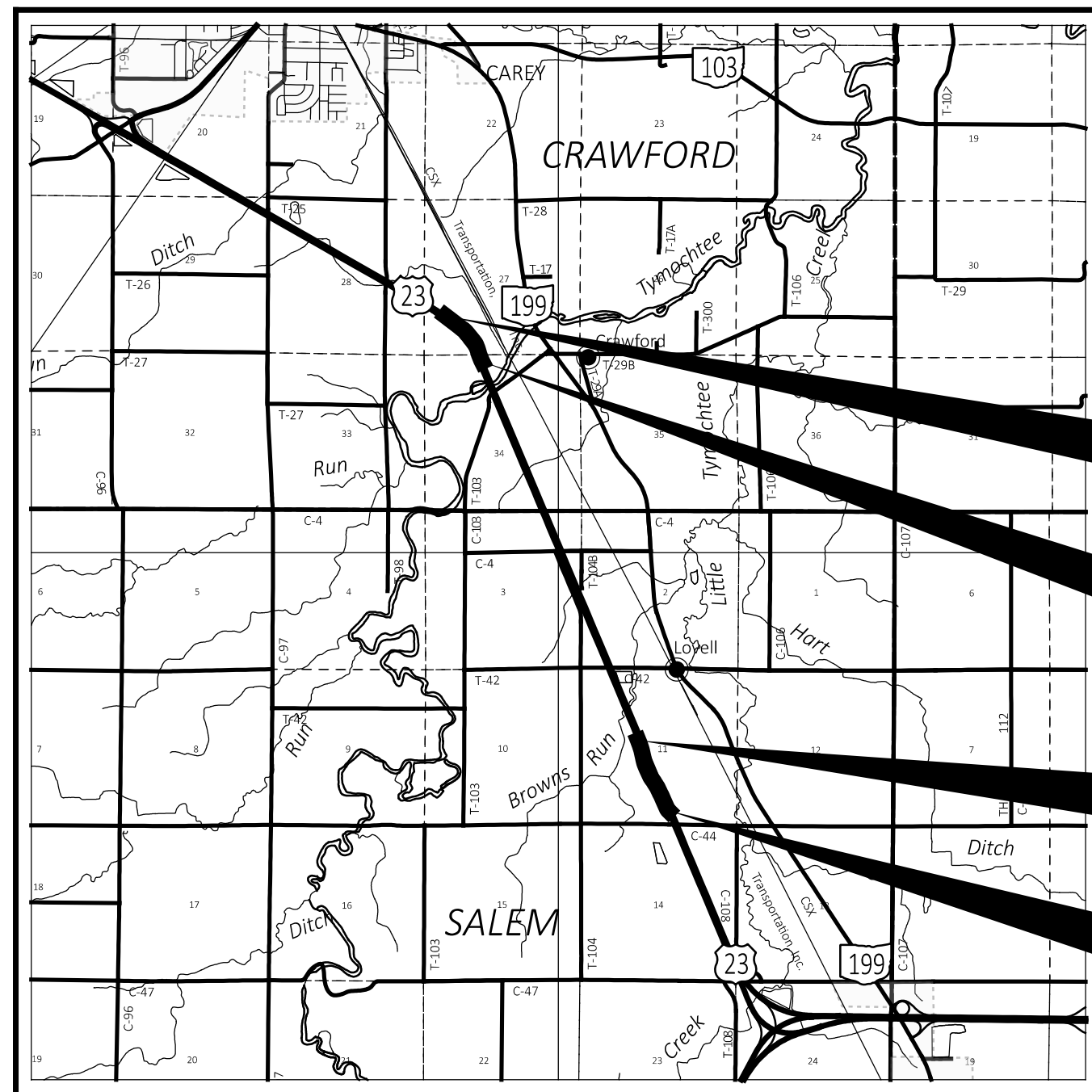


STATE OF OHIO DEPARTMENT OF TRANSPORTATION

WYA-US-23 REST AREAS

CRAWFORD TOWNSHIP / SALEM TOWNSHIP
WYANDOT COUNTY



LOCATION MAP

LATITUDE: N40°54'05" LONGITUDE: W83°20'44"
SCALE IN MILES



PORTION TO BE IMPROVED	
INTERSTATE HIGHWAY	
FEDERAL ROUTES	
STATE ROUTES	
COUNTY & TOWNSHIP ROADS	
OTHER ROADS	

DESIGN DESIGNATION

CURRENT ADT (2024)	17,000
DESIGN YEAR ADT (2044)	21,000
DESIGN HOURLY VOLUME (2044)	1,800
DIRECTIONAL DISTRIBUTION	52.4%
TRUCKS (24 HOUR B&C)	20%
DESIGN SPEED	70
LEGAL SPEED	65
DESIGN FUNCTIONAL CLASSIFICATION:	
03 OTHER PRINCIPAL ARTERIAL ROADS (RURAL)	
NHS PROJECT	Yes

DESIGN EXCEPTIONS

NONE REQUIRED

ADA DESIGN WAIVERS

NONE REQUIRED

UNDERGROUND UTILITIES
Contact Two Working Days
Before You Dig

OHIO811.org
Before You Dig

OHIO811, 8-1-1, or 1-800-362-2764
(Non members must be called directly)

PLAN PREPARED BY:

TETRA TECH
420 Madison Ave., Suite 1001
Toledo, Ohio 43604
Phone: (419) 255-9500

INDEX OF SHEETS:

TITLE SHEET	1
SCHEMATIC PLAN	2 - 5
TYPICAL SECTIONS	6 - 10
GENERAL NOTES	11 - 12
MAINTENANCE OF TRAFFIC	13 - 17
GENERAL SUMMARY	18 - 19
SUBSUMMARIES	20 - 27
PROJECT SITE PLANS	28 - 31
SB REST AREA PLAN SHEETS	32 - 35
SB REST AREA PROFILE SHEETS	36 - 39
NB REST AREA PLAN SHEETS	40 - 43
NB REST AREA PROFILE SHEETS	44 - 47
CROSS SECTIONS	48 - 72
PAVEMENT DETAILS	73 - 80
STORM SEWER PROFILES	81 - 92
TRAFFIC CONTROL	93 - 101
LIGHTING	102 - 112
FENCE DETAILS	113
GEOTECHNICAL PROFILE - ROADWAY	114 - 122

STANDARD CONSTRUCTION DRAWINGS						SUPPLEMENTAL SPECIFICATIONS		SPECIAL PROVISIONS	
BP-3.1	1/21/22	HL-10.11	7/21/23	MT-98.29	1/17/20	800-2023	10/20/23		
BP-4.1	7/19/13	HL-10.12	7/21/23	MT-105.10	1/17/20	813	7/21/23		
BP-5.1	7/15/22	HL-10.13	1/20/23			825	4/21/23		
BP-7.1	7/21/23	HL-10.31	7/15/22	TC-41.10	7/19/13	832	7/21/23		
		HL-20.11	7/21/23	TC-41.20	10/18/13	895	4/18/14		
CB-3	7/16/21	HL-20.21	1/15/21	TC-41.30	4/21/23	902	7/19/19		
CB-3A	7/16/21	HL-30.11	7/21/23	TC-42.10	10/18/13	913	4/16/21		
		HL-30.21	4/17/20	TC-42.20	10/18/13	995	7/17/15		
DM-1.1	7/17/20	HL-30.22	1/15/21	TC-51.11	1/15/16				
DM-1.2	7/16/21	HL-40.20	7/21/23	TC-52.10	10/18/13				
DM-4.4	1/15/16	HL-50.11	1/16/15	TC-52.20	1/15/21				
MH-3	7/21/23	HL-60.11	7/21/17	TC-71.10	4/21/23				
		HL-60.21	7/20/18						
RM-5.1	7/18/14	HL-60.31	7/21/23						
		MT-95.45	7/21/23						

FEDERAL PROJECT NUMBER

NON-FEDERAL

RAILROAD INVOLVEMENT

NONE

PROJECT DESCRIPTION

IMPROVEMENT OF THE US 23 NORTHBOUND AND SOUTHBOUND REST AREAS INCLUDING CONFIGURATION OF NEW PASSENGER VEHICLE AND TRUCK PARKING AREAS WITH FULL DEPTH PAVEMENT. IMPROVEMENTS ALSO INCLUDE STORM SEWER, PAVEMENT MARKING AND SIGNING, LIGHTING, AND OTHER MISCELLANEOUS ITEMS. REPLACEMENT OF THE REST AREA BUILDINGS ARE BEING PERFORMED BY OTHERS UNDER A SEPARATE CONTRACT.

EARTH DISTURBED AREAS

PROJECT EARTH DISTURBED AREA:	10.13 ACRES
ESTIMATED CONTRACTOR EARTH DISTURBED AREA:	1.00 ACRES
NOTICE OF INTENT EARTH DISTURBED AREA:	11.13 ACRES

LIMITED ACCESS

THIS IMPROVEMENT IS ESPECIALLY DESIGNED FOR THROUGH TRAFFIC AND HAS BEEN DECLARED A LIMITED ACCESS HIGHWAY OR FREEWAY BY ACTION OF THE DIRECTOR IN ACCORDANCE WITH THE PROVISIONS OF SECTION 5511.02 OF THE OHIO REVISED CODE.

2023 SPECIFICATIONS

THE STANDARD SPECIFICATIONS OF THE STATE OF OHIO, DEPARTMENT OF TRANSPORTATION, INCLUDING SUPPLEMENTAL SPECIFICATIONS LISTED IN THE PLANS AND CHANGES LISTED IN THE PROPOSAL SHALL GOVERN THIS IMPROVEMENT.

I HEREBY APPROVE THESE PLANS AND DECLARE THAT THE MAKING OF THIS IMPROVEMENT WILL NOT REQUIRE THE CLOSING TO TRAFFIC OF THE HIGHWAY EXCEPT FOR THE REST AREAS AS DESCRIBED IN THESE PLANS AND THAT PROVISIONS FOR THE MAINTENANCE AND SAFETY OF TRAFFIC WILL BE AS SET FORTH ON THE PLANS AND ESTIMATES.

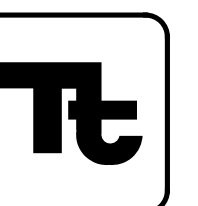
Christopher A. Hughes, P.E.
District 01 Deputy Director

Jack Marchbanks, PhD
Director, Department of Transportation

ENGINEER'S SEAL ALL SHEETS EXCEPT LIGHTING	ENGINEER'S SEAL LIGHTING SHEETS

TITLE SHEET

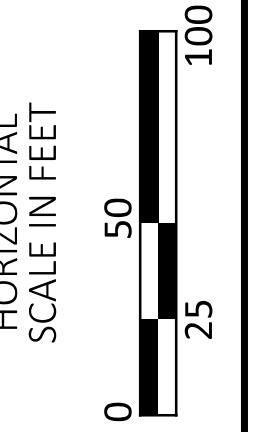
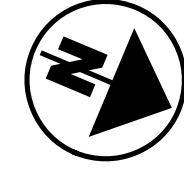
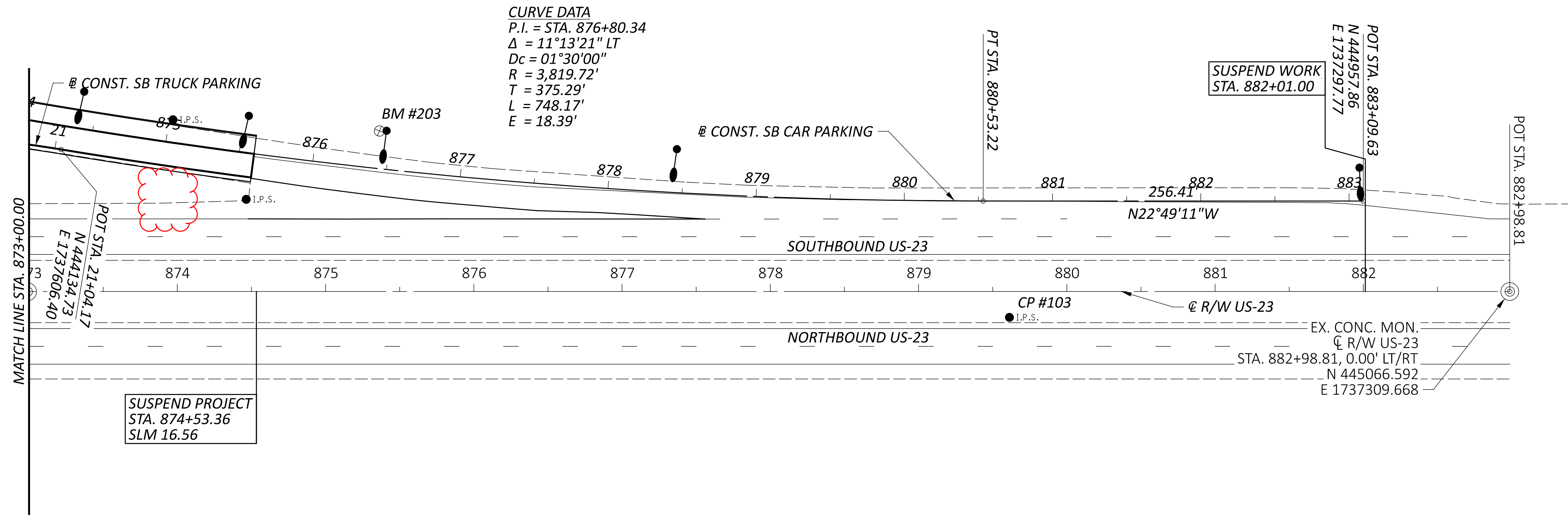
DESIGN AGENCY



DESIGNER
GCB
REVIEWER
DTC 10/12/23
PROJECT ID
117743
SHEET TOTAL
P.1 122

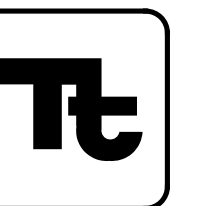
WYA-US-23 REST AREAS

MODEL: Sheet_SurvFI PAPER SIZE: 34x42 (in.) DATE: 1/11/2024 TIME: 1:02:33 PM USER: Dave Charville
pvc:\ohiodot-pw-bentley.com\ohiodot-pw-02\Documents\01 Active Projects\District 01\Wyandot\117743\401-Engineering_TetraTech\Roadway\Sheets\117743_GT001.dgn

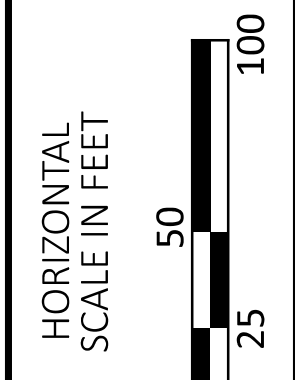
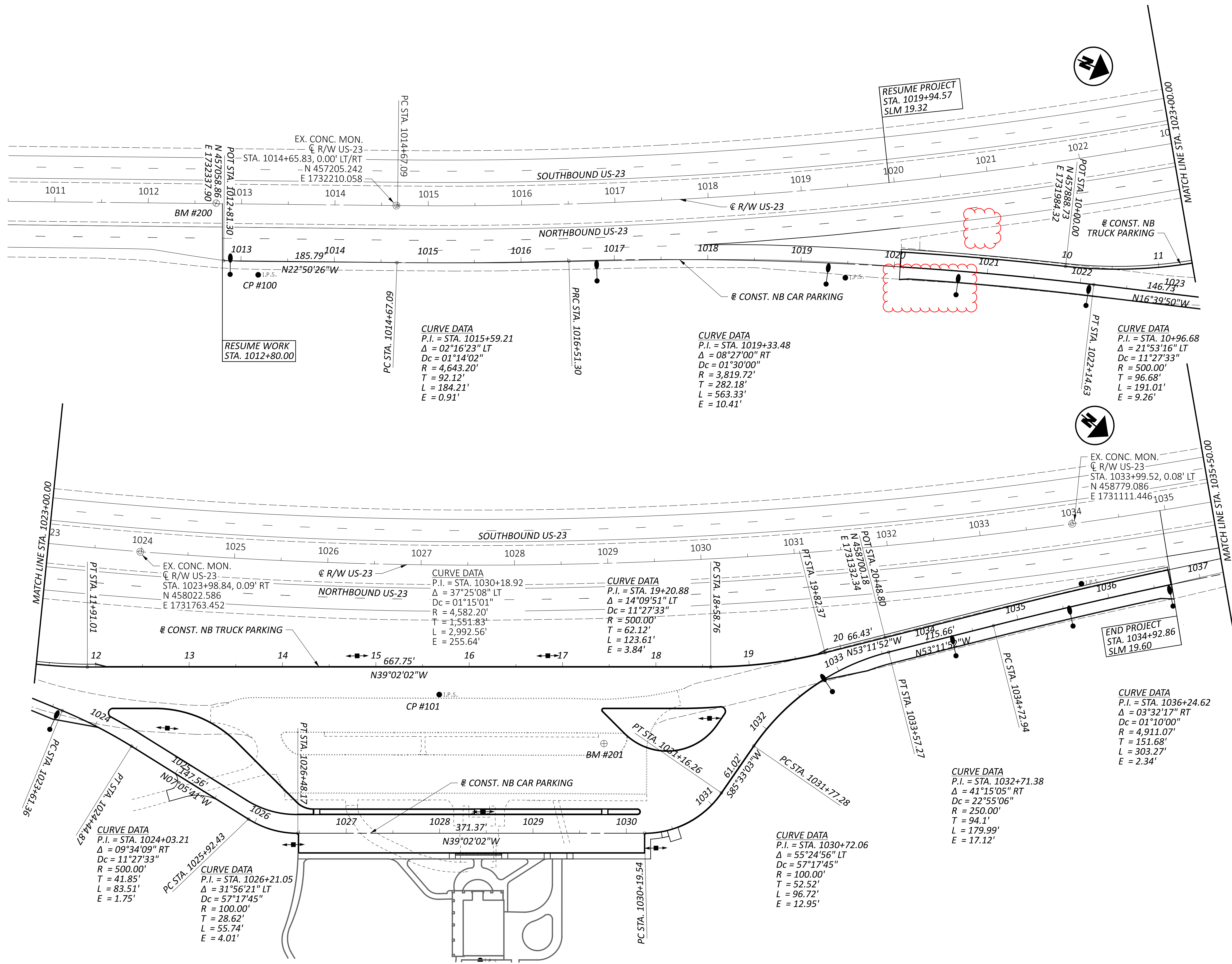


SCHMATIC PLAN
 SOUTHBOUND REST AREA

DESIGN AGENCY

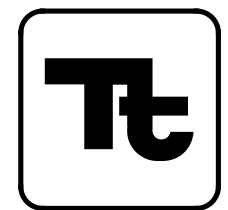


DESIGNER	GCB
REVIEWER	DTC 10/12/23
PROJECT ID	117743
SHEET	TOTAL
P.3	122



SCHMATIC PLAN
NORTHBOUND REST AREA

DESIGN AGENCY



DESIGNER

GCB

REVIEWER

DTC 10/12/23

PROJECT ID

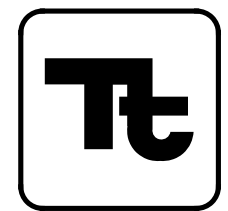
117743


SHEET TOTAL

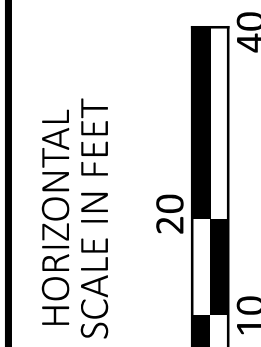
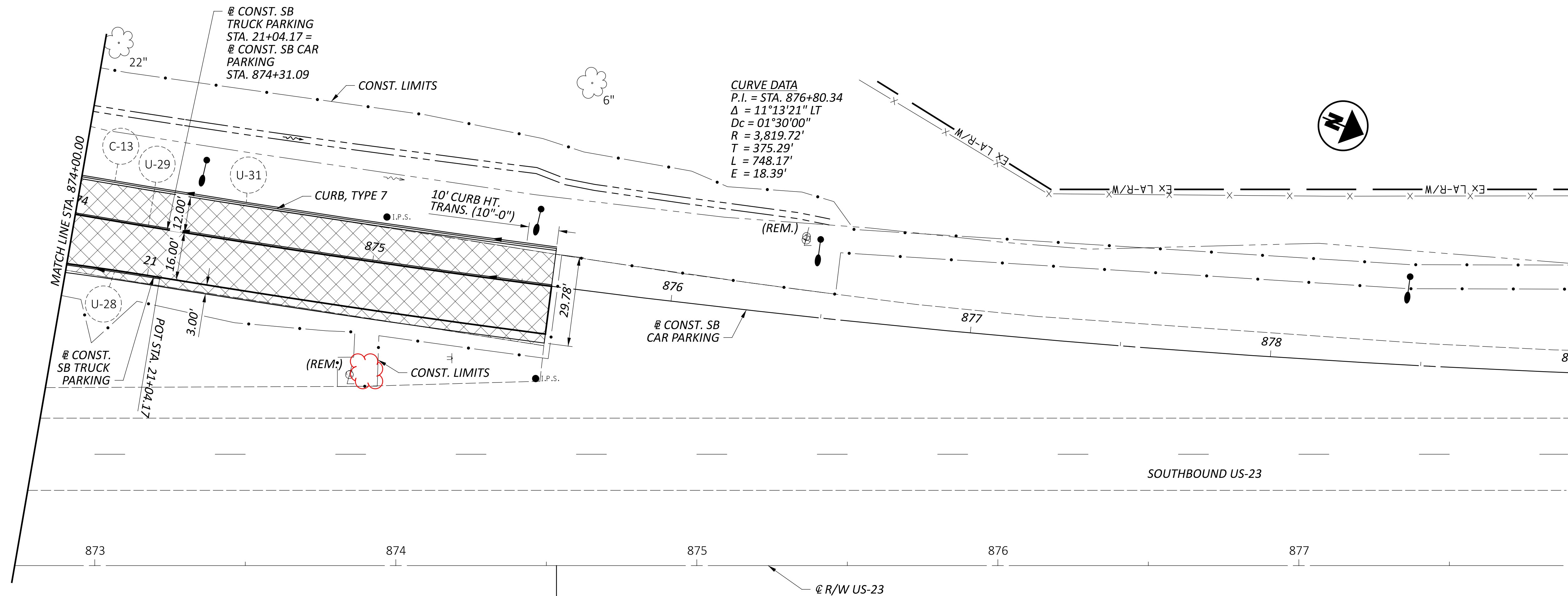
P.4 122

SHEET NUM.										PART.	ITEM	ITEM	GRAND	UNIT	DESCRIPTION	SEE SHEET NO.	
13	21	22	23	93	95	103	104	105		01/NFP/44	EXT	TOTAL					
		2,794	2,915								5,709	302	56000	5,709	CY	PAVEMENT	
	396	2,526	2,631								5,553	304	20000	5,553	CY	AGGREGATE BASE	
		1,576	1,647								3,223	407	20000	3,223	GAL	NON-TRACKING TACK COAT	
		597	623								1,220	442	20000	1,220	CY	ASPHALT CONCRETE SURFACE COURSE, 12.5 MM, TYPE A (448)	
		698	727								1,425	442	20200	1,425	CY	ASPHALT CONCRETE INTERMEDIATE COURSE, 19 MM, TYPE A (448)	
	182										182	452	12011	182	SY	8" NON-REINFORCED CONCRETE PAVEMENT, CLASS QC 1P, AS PER PLAN	12
	1,120										1,120	609	26001	1,120	FT	CURB, TYPE 6, AS PER PLAN	12
	5,912										5,912	609	28001	5,912	FT	CURB, TYPE 7, AS PER PLAN	12
	337										337	609	70001	337	SY	4" CONCRETE MEDIAN, AS PER PLAN	12
																LIGHTING	
											56	625	00450	56	EACH	CONNECTION, FUSED PULL APART	
											18	625	00480	18	EACH	CONNECTION, UNFUSED PERMANENT	
											28	625	10490	28	EACH	LIGHT POLE, CONVENTIONAL, DESIGN AT22B40	
											14	625	13500	14	EACH	LIGHT TOWER, MISC.:LIGHT TOWER, BB45	102
											28	625	14100	28	EACH	LIGHT POLE FOUNDATION, 24" X 8' DEEP	
											14	625	15100	14	EACH	LIGHT TOWER FOUNDATION, 36" X 20" DEEP	
											6,474	625	23200	6,474	FT	NO. 4 AWG 2400 VOLT DISTRIBUTION CABLE	
											5,628	625	23400	5,628	FT	NO. 10 AWG POLE AND BRACKET CABLE	
											6,753	625	24320	6,753	FT	1-1/2" DUCT CABLE WITH THREE NO. 4 AWG 2400 VOLT CABLES	
											1,998	625	25504	1,998	FT	CONDUIT, 3", 725.051	
											28	625	26253	28	EACH	LUMINAIRE, CONVENTIONAL, SOLID STATE (LED), AS PER PLAN, 240V	102
											28	625	26263	28	EACH	LUMINAIRE, HIGH MAST, SOLID STATE (LED), AS PER PLAN, 240V	102
											7,436	625	29002	7,436	FT	TRENCH, 24" DEEP	
											4	625	30706	4	EACH	PULL BOX, 725.08, 24"	
											6	625	31510	6	EACH	PULL BOX REMOVED	
											56	625	32000	56	EACH	GROUND ROD	
											8,451	625	36010	8,451	FT	UNDERGROUND WARNING/MARKING TAPE	
											19	625	75400	19	EACH	LIGHT POLE REMOVED	
											19	625	75500	19	EACH	LIGHT POLE FOUNDATION REMOVED	
											25	625	75506	25	EACH	LUMINAIRE REMOVED	
																TRAFFIC CONTROL	
											4	620	31200	4	EACH	REMOVAL OF DELINEATOR	
											454	630	03100	454	FT	GROUND MOUNTED SUPPORT, NO. 3 POST	
											143	630	06500	143	FT	GROUND MOUNTED STRUCTURAL BEAM SUPPORT, W6X9	
											16	630	08600	16	EACH	SIGN POST REFLECTOR	
											8	630	09000	8	EACH	BREAKAWAY STRUCTURAL BEAM CONNECTION	
											140	630	80100	140	SF	SIGN, FLAT SHEET	
											128	630	80200	128	SF	SIGN, GROUND MOUNTED EXTRUSHEET	
											8	630	84500	8	EACH	GROUND MOUNTED STRUCTURAL BEAM SUPPORT FOUNDATION	
											35	630	84900	35	EACH	REMOVAL OF GROUND MOUNTED SIGN AND DISPOSAL	
											36	630	86002	36	EACH	REMOVAL OF GROUND MOUNTED POST SUPPORT AND DISPOSAL	
											0.51	644	00104	0.51	MILE	EDGE LINE, 6"	
											86	644	00404	86	FT	CHANNELIZING LINE, 12"	
											21	644	00720	21	FT	CHEVRON MARKING	
											5,794	644	01200	5,794	FT	PARKING LOT STALL MARKING	
											6	644	01600	6	EACH	HANDICAP SYMBOL MARKING	
																MAINTENANCE OF TRAFFIC	
800											800	410	12000	800	CY	TRAFFIC COMPACTED SURFACE, TYPE A OR B	
30											30	616	10000	30	MGAL	WATER	
																INCIDENTALS	
											LS	614	11000	LS		MAINTAINING TRAFFIC	
											8	619	16020	8	MNTH	FIELD OFFICE, TYPE C	
											LS	623	10000	LS		CONSTRUCTION LAYOUT STAKES AND SURVEYING	
											LS	624	10000	LS		MOBILIZATION	

GENERAL SUMMARY

DESIGN AGENCY

 DESIGNER
 GCB
 REVIEWER
 DTC 10/12/23
 PROJECT ID
 117743
 SHEET TOTAL
 P.19 | 122

LEGEND:
 REM. = REMOVE
 = PAVEMENT TO BE REMOVED



PLAN - SOUTHBOUND REST AREA
 STA. 874+00 TO STA. 879+00

DESIGN AGENCY



DESIGNER

GCB

REVIEWER

DTC 10/12/23


PROJECT ID

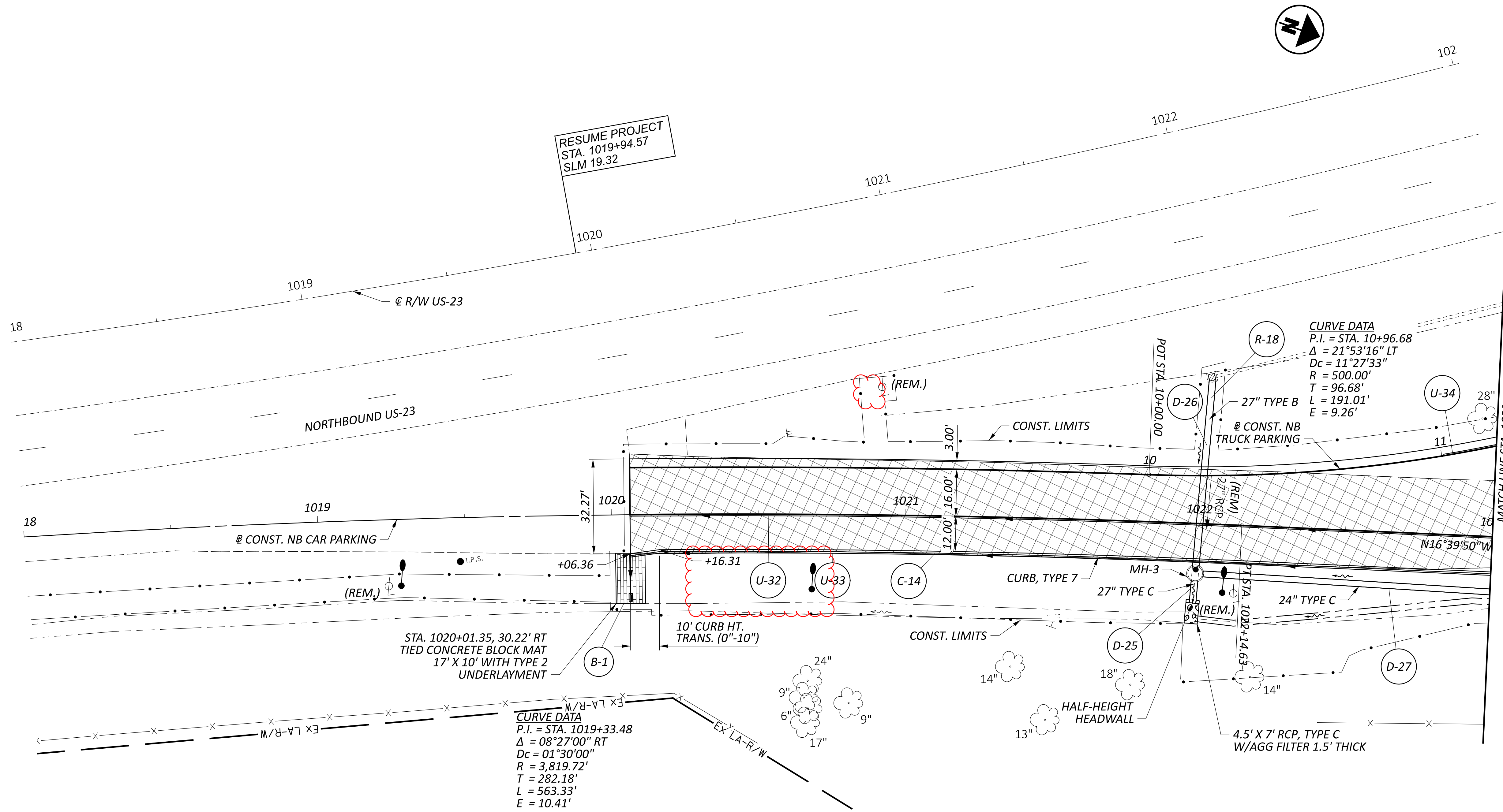
117743

SHEET TOTAL

P.35 | 122

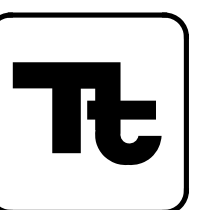
FOR PROFILES, SEE SHEETS P.37 & P.39

LEGEND:
 REM. = REMOVE
 = PAVEMENT TO BE REMOVED



PLAN - NORTHBOUND REST AREA
 STA. 1018+00 TO STA. 1023+00

DESIGN AGENCY



DESIGNER	GCB
REVIEWER	DTC 10/12/23
PROJECT ID	117743
SHEET TOTAL	P.40 122


FOR PROFILES, SEE SHEETS P.44 & P.46

WYA-US-23 REST AREAS

MODEL: Sheet_SurvFI_PAPER SIZE: 34x22 (in.) DATE: 1/10/2024 TIME: 9:38:22 AM USER: lnavis5
 p:\vohodo-pw-bentley.com\ohodo-pw-02\Documents\01 Active Projects\District 01\Wyandot\117743\400-Engineering\Lighting\Sheets\117743_LS002.dgn

REF NO.	SHEET NO.	LOCATION	STATION TO STATION		TO	625	625	625	625	625	625	625	625	625	625	625	625	625	625	625	625	625	
						CONNECTION, FUSED PULL APART EACH	CONNECTION, UNFUSED PERMANENT EACH	LIGHT POLE, CONVENTIONAL, DESIGN AT22B40 EACH	LIGHT TOWER, MISC.: LIGHT TOWER, BB45 EACH	LIGHT POLE FOUNDATION, 24" X 8' DEEP EACH	LIGHT TOWER FOUNDATION, 36" X 20' DEEP EACH	NO. 4 AWG 2400 VOLT DISTRIBUTION CABLE FT	NO. 10 AWG POLE AND BRACKET CABLE FT	1-1/2" DUCT CABLE WITH THREE NO. 4 AWG 2400 VOLT CABLES FT	CONDUIT, 3", 725.051 FT	TRENCH, 24" DEEP FT	PULL BOX, 725.08, 24" EACH	LUMINAIRE, CONVENTIONAL, SOLID STATE (LED), AS PER PLAN, 240V EACH	LUMINAIRE, HIGH MAST, SOLID STATE (LED), AS PER PLAN, 240V EACH	GROUND ROD EACH	UNDERGROUND WARNING/MARKING TAPE FT		
A-1	106	US-23	849+92.00	LT		2		1		1			201						1		1		
C1	106		A-1		A-2									366					356				356
A-2	106	US-23	853+93.00	LT		2		1		1			201						1		1		356
C2	106		A-2		A-3									306					296				296
A-3	106	US-23	856+44.00	LT		2		1		1			201						1		1		296
C3	106		A-3		A-4									306					296				296
A-4	106	SB CAR	859+40.80	LT		2		1		1			201						1		1		
C4	106-107		A-4		A-5									166					156				156
A-5	107	SB CAR	860+98.50	LT		2		1		1			201						1		1		
C5	107		A-5		A-6									116					106				106
A-6	107	SB CAR	862+05.00	LT		2		1		1			201						1		1		
C6	107		A-6		A-7									118					108				108
A-7	107	SB CAR	863+16.70	LT		2		1		1			201						1		1		
C7	107		A-7		PB1									253					243				243
PB1	107	SB CAR	865+48.80	29.00' LT			3																
C8	107		PB8		A-8						81				17				17				17
A-8	107	SB CAR	856+51.00	LT				1		1				420					130		2	2	130
C9	107		A-8		A-9										130				130				130
A-9	107	SB CAR	864+24.80	LT				1		1									2		2		
C10	107		A-9		PB2							279			83				83				83
PB2	107	SB TRUCK	12+61.70	9.10' RT			3										1						
C11	107		PB2		A-10									155					145				145
A-10	107	SB TRUCK	14+05.30	RT				1		1									2		2		
C12	107		A-10		A-11									361					351				351
A-11	107	SB TRUCK	16+11.00	RT				1		1									2		2		
C13	107		A-8		A-12						669				213				213				213
A-12	107	SB CAR	867+33.20	RT				1		1									2		2		
C14	107		A-12		PB3						657				209				209				209
PB3	107	SB CAR	869+43.90	28.70' RT			3										1						
C15	107		PB3		A-13						153				41				41				41
A-13	107	SB CAR	869+41.60	LT				1		1									2		2		
C16	107		PB3		A-14						555				175				175				175
A-14	107	SB CAR	871+32.30	RT				1		1									2		2		
C17	107		A-14		A-15						375				115				115				115
A-15	107	SB CAR	872+31.40	LT		2		1		1			201						1		1		
C18	107		A-15		A-16									102					92				92
A-16	107	SB CAR	873+29.00	LT		2		1		1			201						1		1		
C19	107-108		A-16		A-17									120					110				110
A-17	108	SB CAR	874+75.00	LT		2		1		1			201						1		1		
C20	108		A-17		A-19									123					113				113
PB4			Not Used																				
C21			Not Used																				
A-18			Not Used																				
C22			Not Used																				
A-19	108	SB CAR	875+53.20	LT		2		1		1			201						1		1		
C23	108		A-19		A-20									104					94				94
A-20	108	SB CAR	876+47.30	LT		2		1		1			201						1		1		
C24	108		A-20		A-21									206					196				196
A-21	108	SB CAR	878+44.90	LT		2		1		1			201						1		1		
C25	108		A-21		A-22									471					461				461
A-22	108	SB CAR	883+07.00	LT		2		1		1			201						1		1		
TOTALS CARRIED TO GENERAL SUMMARY						28	9	14	7	14	7	3189	2814	3273	983	4106	2	14	14	28	4106		

LIGHTING SUBSUMMARY

DESIGN AGENCY

 DESIGNER
LMD
 REVIEWER
 PROJECT ID
117743
 SHEET TOTAL
 P.104 122

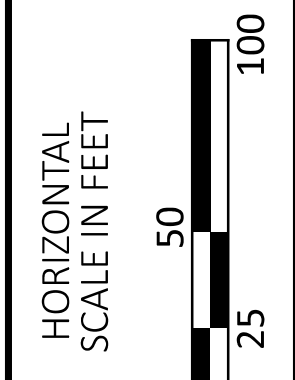
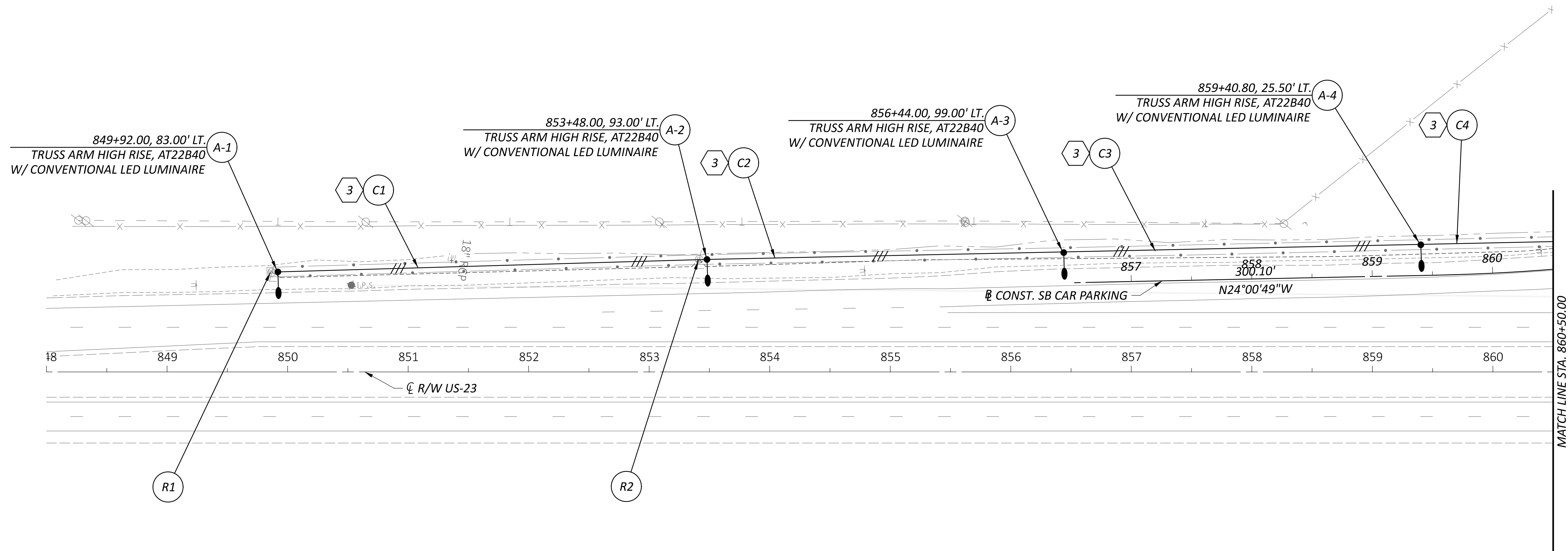
REF NO.	SHEET NO.	LOCATION	STATION TO STATION		TO	625	625	625	625	625	625	625	625	625	625	625	625	625	625	625			
						CONNECTION, FUSED PULL APART EACH	CONNECTION, UNFUSED PERMANENT EACH	LIGHT POLE, CONVENTIONAL, DESIGN AT22B40 EACH	LIGHT TOWER, MISC.: LIGHT TOWER, BB45 EACH	LIGHT POLE FOUNDATION, 24" X 8' DEEP EACH	LIGHT TOWER FOUNDATION, 36" X 20' DEEP EACH	NO. 4 AWG 2400 VOLT DISTRIBUTION CABLE FT	NO. 10 AWG POLE AND BRACKET CABLE FT	1-1/2" DUCT CABLE WITH THREE NO. 4 AWG 2400 VOLT CABLES FT	CONDUIT, 3" 725.051 FT	TRENCH, 24" DEEP FT	PULL BOX, 725.08, 24" EACH	LUMINAIRE CONVENTIONAL SOLID STATE (LED), AS PER PLAN, 240V EACH	LUMINAIRE, HIGH MAST, SOLID STATE (LED), AS PER PLAN, 240V EACH	GROUND ROD EACH			
B-1	109	NB CAR	1012+88.50	RT		2		1		1			201					1		1			
C26	109		B-1		B-2									403				393					393
B-2	109	NB CAR	1016+81.00	RT		2		1		1			201					1		1			
C27	109		B-2		B-3									255				245					245
B-3	109	NB CAR	1019+28.00	RT		2		1		1			201					1		1			
C28	109		B-3		B-4									150				140					140
B-4	109	NB CAR	1020+68.40	RT		2		1		1			201					1		1			
C29		Not Used																					
PB5		Not Used																					
C30		Not Used																					
B-5		Not Used																					
C31	109		B-4		B-6									150				140					140
B-6	109	NB CAR	1022+09.00	RT		2		1		1			201					1		1			
C32	109		B-6		B-7									157				147					147
B-7	109	NB CAR	1023+56.60	RT		2		1		1			201					1		1			
C33	109-110		B-7		B-8								435					135					135
B-8	110	NB CAR	1024+67.20	LT				1		1									2	2			
C34	110		B-8		PB6								510					160					160
PB6	110	NB CAR	1026+41.30		27.00' LT			3										1					
C35	110		PB6		B-9								150					40					40
B-9	110	NB CAR	1026+43.90	RT				1		1									2	2			
C36	110		PB6		B-10								705					225					225
B-10	110	NB CAR	1028+46.80	LT				1		1									2	2			
C37	110		B-10		B-11								696					222					222
B-11	110	NB CAR	1030+30.00	RT				1		1									2	2			
C38	110		B-11		PB7								90					20					20
PB7	110	NB CAR	1030+24.40		35.20' RT			3															
C39	110		B-11		B14								480					150					150
B-14	110	NB CAR	1031+74.70	LT				1		1									2	2			
C40	110		B14		PB8								219					63					63
PB8	110	NB TRUCK	18+47.60		7.00' LT			3										1					
C41	110		PB8		B-12													174					164
B-12	110	NB TRUCK	16+84.20	LT				1		1									2	2			
C42	110		B-12		B-13													215					205
B-13	110	NB TRUCK	14+80.00	LT				1		1									2	2			
C43	110		PB7		B-15													288					278
B-15	110	NB CAR	1032+82.60	RT		2		1		1			201						1		1		
C44	110		B-15		B-16													148					138
B-16	110	NB CAR	1034+26.10	RT		2		1		1			201						1		1		
C45	110		B-16		B-17													140					130
B-17	110	NB CAR	1035+55.80	RT		2		1		1			201						1		1		
C46	110		B-17		B-18													119					109
B-18	110	NB CAR	1036+65.50	RT		2		1		1			201						1		1		
C47	110-111		B-18		B-19													295					285
B-19	111	US-23	1037+72.10	RT		2		1		1			201						1		1		
C48	111		B-19		B-20													294					284
B-20	111	US-23	1040+51.20	RT		2		1		1			201						1		1		
C49	111		B-20		B-21													338					328
B-21	111	US-23	1043+73.70	RT		2		1		1			201						1		1		
C50	111		B-21		B-22													354					344
B-22	111	US-23	1047+14.50	RT		2		1		1			201						1		1		
TOTALS CARRIED TO GENERAL SUMMARY						28	9	14	7	14	7	3285	2814	3480	1015	3330	2	14	14	28			4345

LIGHTING SUBSUMMARY

DESIGN AGENCY	
DESIGNER	
REVIEWER	
PROJECT ID	117743
SHEET TOTAL	P.105 122

LEGEND	
	CONVENTIONAL LUMINAIRE
	HIGH MAST
	LIGHT PULL BOX
	1 1/2" DUCT CABLE
	X" CONDUIT
	POLE IDENTIFICATION A: CONTROL CENTER & CIRCUIT 1: # IN CIRCUIT
	Ex. LIGHT POLE
	Ex. LIGHT PULL BOX
	Ex. DUCT CABLE
	Ex. CONDUIT

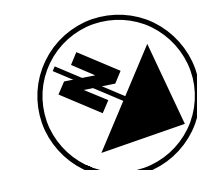
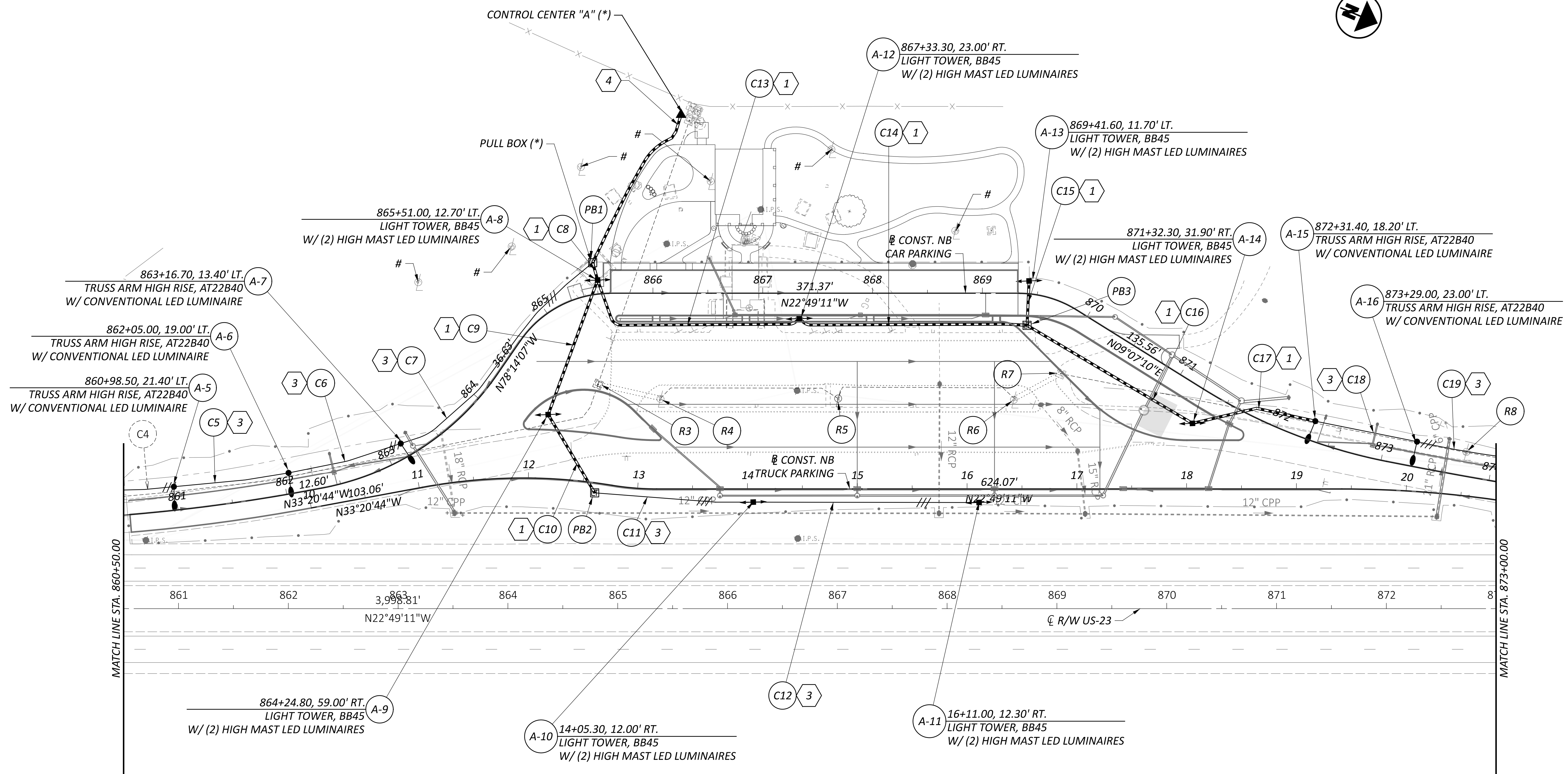
LIGHTING CONDUIT LEGEND	
	PROPOSED 3" CONDUIT, 725.051 IN TRENCH W/ (3)-#4 AWG, 2400 V DISTRIBUTION CABLES
	NOT USED
	PROPOSED 1.5" DUCT CABLE IN TRENCH W/ (3)-#4 AWG, 2400 V DISTRIBUTION CABLES
	CONDUIT (BY SEPERATE PLAN) W/ (3)-LIGHTING DISTRIBUTION CABLES (BY SEPERATE PLAN)



NOTE:
 - EXISTING LIGHTING DUCT CABLE TO BE ABANDONED IN PLACE
 - EXISTING LIGHTING CONDUIT TO BE ABANDONED IN PLACE WITH CONDUCTORS REMOVED (INCIDENTAL TO LIGHT POLE REMOVAL)
 - EXISTING LIGHTING CONDUIT AND DUCT CABLE LOCATIONS ARE APPROXIMATE AND OBTAINED FROM ORIGINAL PLANS.

LIGHTING PLAN
 SB REST AREA - STA. 848+00 TO STA. 860+50

DESIGN AGENCY	
DESIGNER	LMD
REVIEWER	
PROJECT ID	117743
SHEET TOTAL	P.106 122



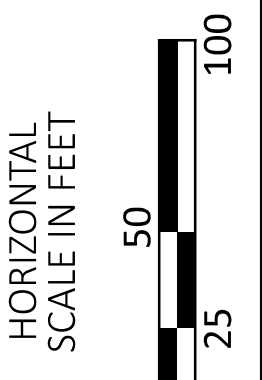
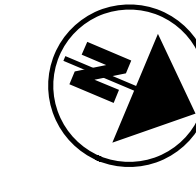
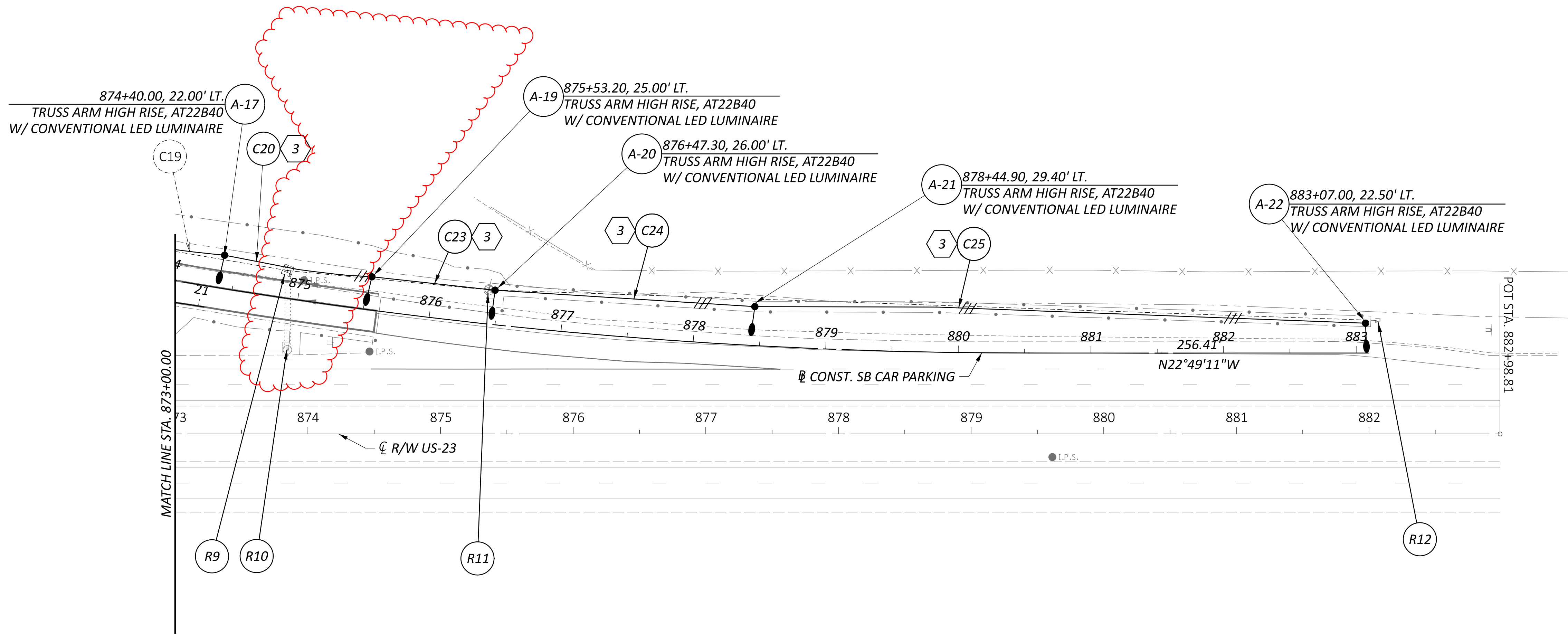
LEGEND	
	CONVENTIONAL LUMINAIRE
	HIGH MAST
	LIGHT PULL BOX
	1 1/2" DUCT CABLE
	X" CONDUIT
	POLE IDENTIFICATION A: CONTROL CENTER & CIRCUIT 1: # IN CIRCUIT
	Ex. LIGHT POLE
	Ex. LIGHT PULL BOX
	Ex. DUCT CABLE
	Ex. CONDUIT

LIGHTING CONDUIT LEGEND	
	PROPOSED 3" CONDUIT, 725.051 IN TRENCH W/ (3)-#4 AWG, 2400 V DISTRIBUTION CABLES
	NOT USED
	PROPOSED 1.5" DUCT CABLE IN TRENCH W/ (3)-#4 AWG, 2400 V DISTRIBUTION CABLES
	CONDUIT (BY SEPERATE PLAN) W/ (3)-LIGHTING DISTRIBUTION CABLES (BY SEPERATE PLAN)

NOTE:
 - EXISTING LIGHTING DUCT CABLE TO BE ABANDONED IN PLACE
 - EXISTING LIGHTING CONDUIT TO BE ABANDONED IN PLACE WITH CONDUCTORS REMOVED (INCIDENTAL TO LIGHT POLE REMOVAL)
 - EXISTING LIGHTING CONDUIT AND DUCT CABLE LOCATIONS ARE APPROXIMATE AND OBTAINED FROM ORIGINAL PLANS.

* INSTALLED BY OTHER PROJECT
 # REMOVED BY OTHER PROJECT

DESIGN AGENCY	
DESIGNER	LMD
REVIEWER	
PROJECT ID	117743
SHEET TOTAL	P.107 122



LIGHTING PLAN
 SB REST AREA - STA. 873+00 TO STA. 883+00

LEGEND

	CONVENTIONAL LUMINAIRE		Ex. LIGHT POLE
	HIGH MAST		Ex. LIGHT PULL BOX
	LIGHT PULL BOX		Ex. DUCT CABLE
	1 1/2" DUCT CABLE		Ex. CONDUIT
	X" CONDUIT		
	POLE IDENTIFICATION A: CONTROL CENTER & CIRCUIT 1: # IN CIRCUIT		

LIGHTING CONDUIT LEGEND

- 1 PROPOSED 3" CONDUIT, 725.051 IN TRENCH W/ (3)-#4 AWG, 2400 V DISTRIBUTION CABLES
- 2 NOT USED
- 3 PROPOSED 1.5" DUCT CABLE IN TRENCH W/ (3)-#4 AWG, 2400 V DISTRIBUTION CABLES
- 4 CONDUIT (BY SEPERATE PLAN) W/ (3)-LIGHTING DISTRIBUTION CABLES (BY SEPERATE PLAN)

NOTE:

- EXISTING LIGHTING DUCT CABLE TO BE ABANDONED IN PLACE
- EXISTING LIGHTING CONDUIT TO BE ABANDONED IN PLACE WITH CONDUCTORS REMOVED (INCIDENTAL TO LIGHT POLE REMOVAL)
- EXISTING LIGHTING CONDUIT AND DUCT CABLE LOCATIONS ARE APPROXIMATE AND OBTAINED FROM ORIGINAL PLANS.

DESIGN AGENCY



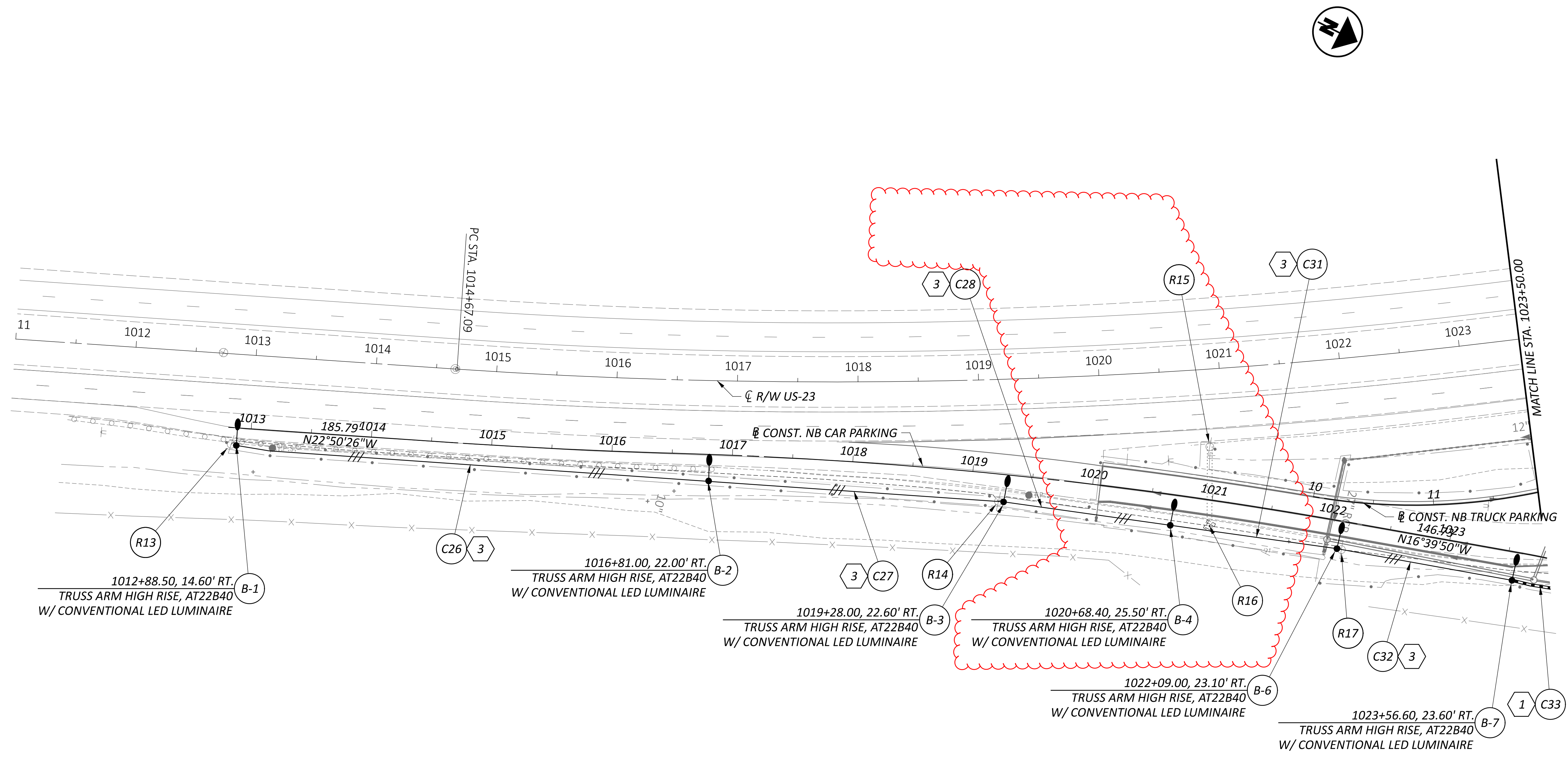
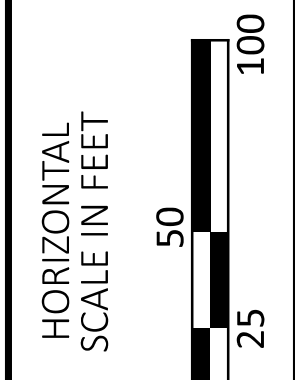
DESIGNER
LMD
 REVIEWER

PROJECT ID
 117743

SHEET TOTAL
 P.108 122

LEGEND	
	CONVENTIONAL LUMINAIRE
	HIGH MAST
	LIGHT PULL BOX
	1 1/2" DUCT CABLE
	X" CONDUIT
	POLE IDENTIFICATION A: CONTROL CENTER & CIRCUIT 1: # IN CIRCUIT
	Ex. LIGHT POLE
	Ex. LIGHT PULL BOX
	Ex. DUCT CABLE
	Ex. CONDUIT

LIGHTING CONDUIT LEGEND	
	PROPOSED 3" CONDUIT, 725.051 IN TRENCH W/ (3)-#4 AWG, 2400 V DISTRIBUTION CABLES
	NOT USED
	PROPOSED 1.5" DUCT CABLE IN TRENCH W/ (3)-#4 AWG, 2400 V DISTRIBUTION CABLES
	CONDUIT (BY SEPERATE PLAN) W/ (3)-LIGHTING DISTRIBUTION CABLES (BY SEPERATE PLAN)



NOTE:
 - EXISTING LIGHTING DUCT CABLE TO BE ABANDONED IN PLACE
 - EXISTING LIGHTING CONDUIT TO BE ABANDONED IN PLACE WITH CONDUCTORS REMOVED (INCIDENTAL TO LIGHT POLE REMOVAL)
 - EXISTING LIGHTING CONDUIT AND DUCT CABLE LOCATIONS ARE APPROXIMATE AND OBTAINED FROM ORIGINAL PLANS.

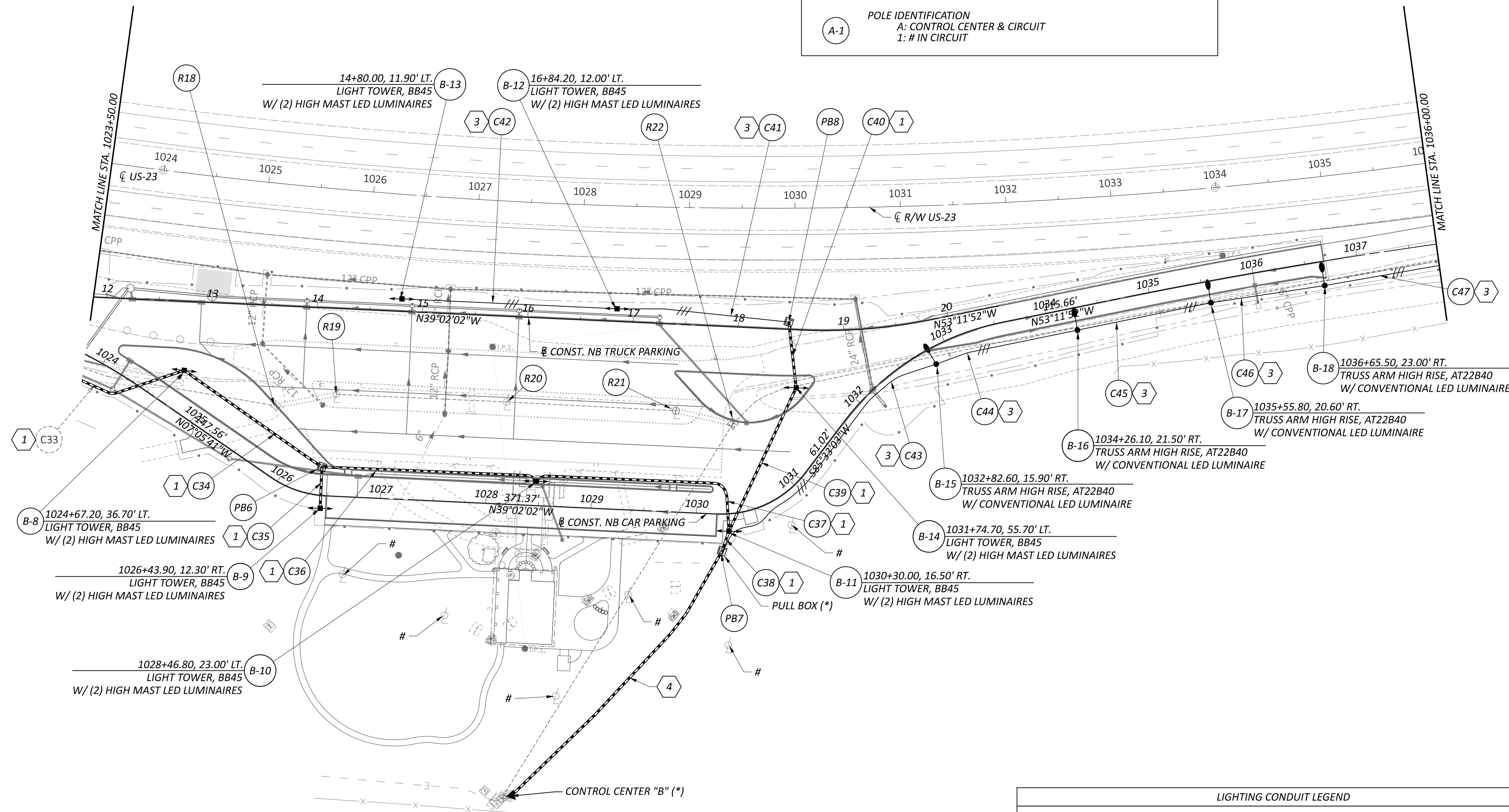
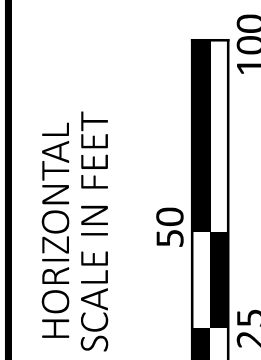
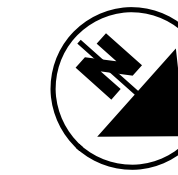
LIGHTING PLAN
 NB REST AREA - STA. 1011+00 TO STA. 1023+50

DESIGN AGENCY	
DESIGNER	LMD
REVIEWER	
PROJECT ID	117743
SHEET TOTAL	P.109 122

NOTE:
 - EXISTING LIGHTING DUCT CABLE TO BE ABANDONED IN PLACE
 - EXISTING LIGHTING CONDUIT TO BE ABANDONED IN PLACE WITH CONDUCTORS REMOVED (INCIDENTAL TO LIGHT POLE REMOVAL)
 - EXISTING LIGHTING CONDUIT AND DUCT CABLE LOCATIONS ARE APPROXIMATE AND OBTAINED FROM ORIGINAL PLANS.

* INSTALLED BY OTHER PROJECT
 # REMOVED BY OTHER PROJECT

LEGEND			
	CONVENTIONAL LUMINAIRE		Ex. LIGHT POLE
	HIGH MAST		Ex. LIGHT PULL BOX
	LIGHT PULL BOX		Ex. DUCT CABLE
	1 1/2" DUCT CABLE		Ex. CONDUIT
	X" CONDUIT		
POLE IDENTIFICATION			
A: CONTROL CENTER & CIRCUIT			
1: # IN CIRCUIT			

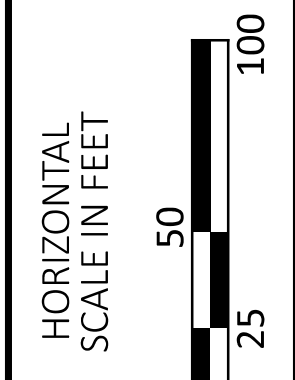
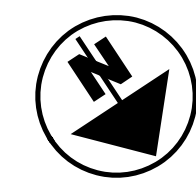
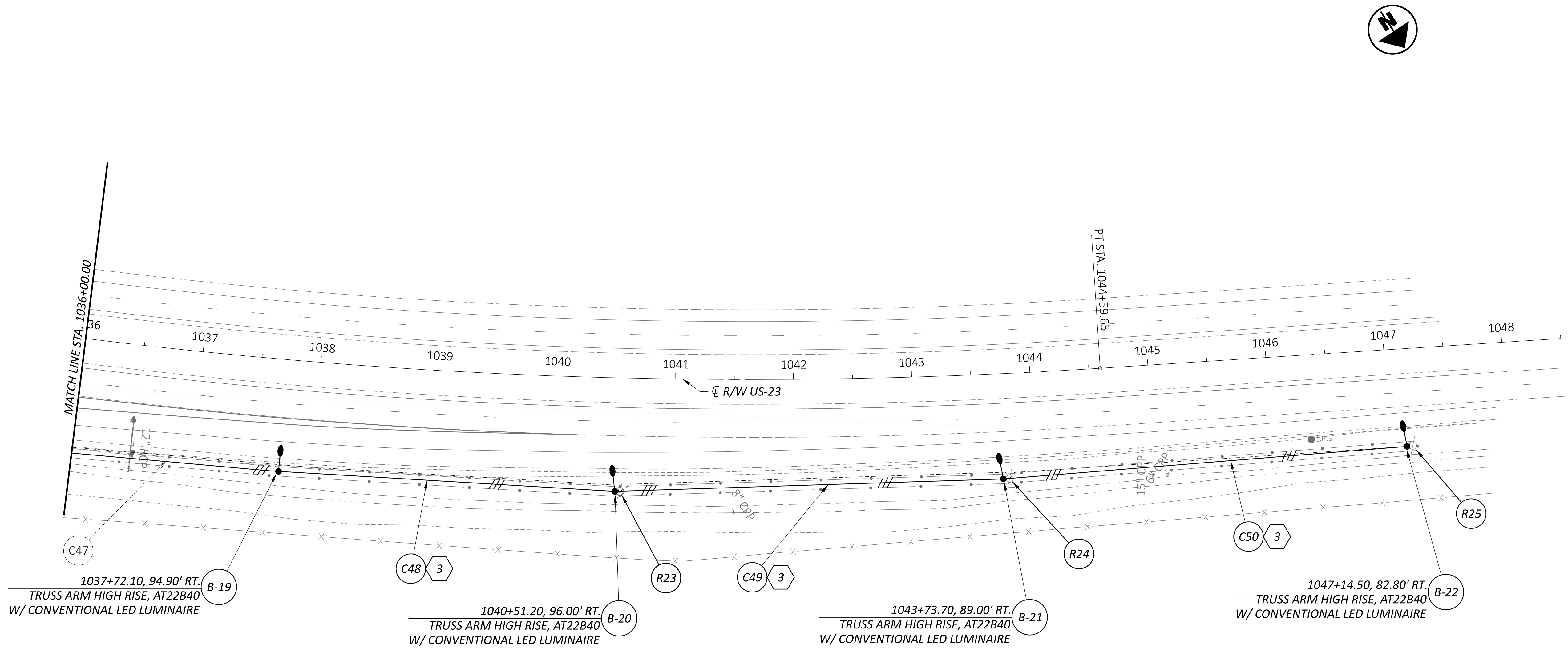


LIGHTING CONDUIT LEGEND	
	PROPOSED 3" CONDUIT, 725.051 IN TRENCH W/ (3)-#4 AWG, 2400 V DISTRIBUTION CABLES
	NOT USED
	PROPOSED 1.5" DUCT CABLE IN TRENCH W/ (3)-#4 AWG, 2400 V DISTRIBUTION CABLES
	CONDUIT (BY SEPERATE PLAN) W/ (3)-LIGHTING DISTRIBUTION CABLES (BY SEPERATE PLAN)

LIGHTING PLAN
 NB REST AREA - STA. 1023+50 TO STA. 1036+00

LEGEND	
	CONVENTIONAL LUMINAIRE
	HIGH MAST
	LIGHT PULL BOX
	1 1/2" DUCT CABLE
	X" CONDUIT
	POLE IDENTIFICATION A: CONTROL CENTER & CIRCUIT 1: # IN CIRCUIT
	Ex. LIGHT POLE
	Ex. LIGHT PULL BOX
	Ex. DUCT CABLE
	Ex. CONDUIT

LIGHTING CONDUIT LEGEND	
	PROPOSED 3" CONDUIT, 725.051 IN TRENCH W/ (3)-#4 AWG, 2400 V DISTRIBUTION CABLES
	NOT USED
	PROPOSED 1.5" DUCT CABLE IN TRENCH W/ (3)-#4 AWG, 2400 V DISTRIBUTION CABLES
	CONDUIT (BY SEPERATE PLAN) W/ (3)-LIGHTING DISTRIBUTION CABLES (BY SEPERATE PLAN)

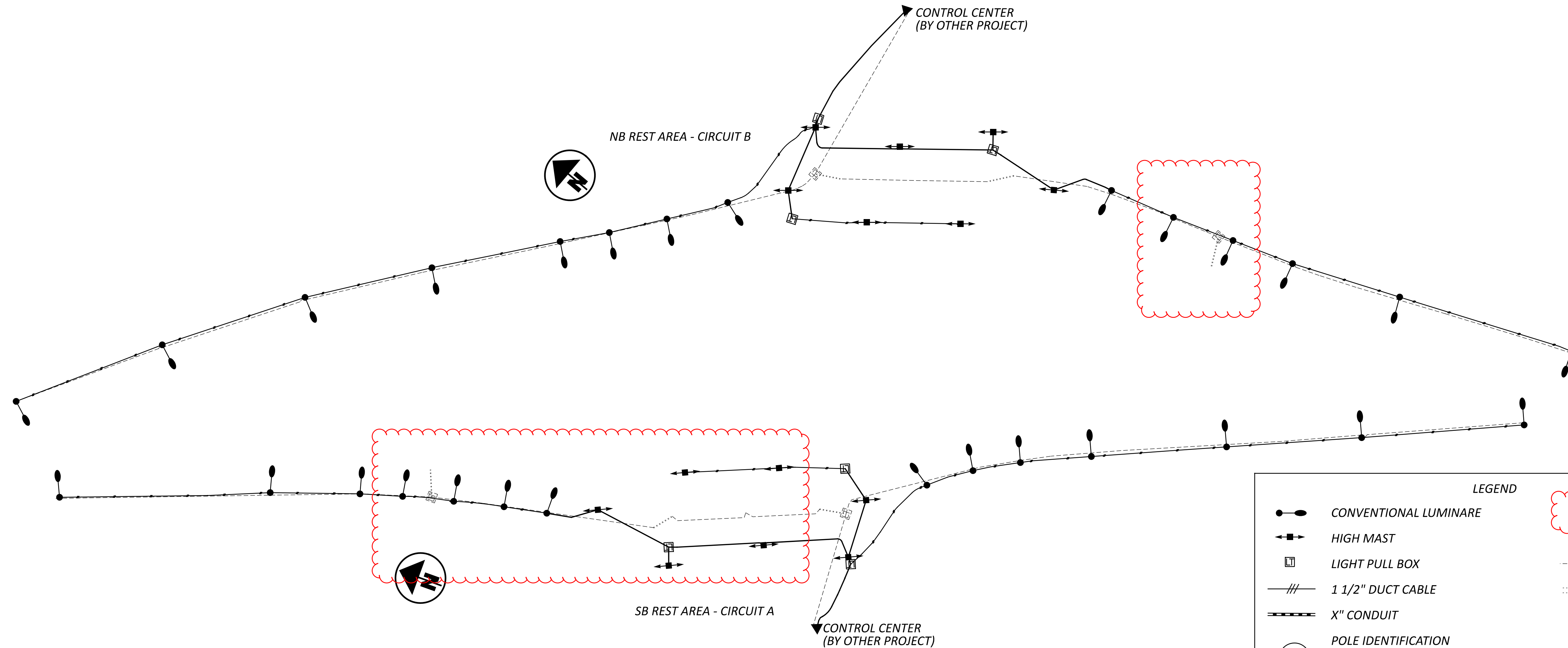


LIGHTING PLAN
 NB REST AREA - STA. 1036+00 TO STA. 1048+50

NOTE:
 - EXISTING LIGHTING DUCT CABLE TO BE ABANDONED IN PLACE
 - EXISTING LIGHTING CONDUIT TO BE ABANDONED IN PLACE WITH CONDUCTORS REMOVED (INCIDENTAL TO LIGHT POLE REMOVAL)
 - EXISTING LIGHTING CONDUIT AND DUCT CABLE LOCATIONS ARE APPROXIMATE AND OBTAINED FROM ORIGINAL PLANS.

DESIGN AGENCY	
DESIGNER	LMD
REVIEWER	
PROJECT ID	117743
SHEET TOTAL	P.111 122

CONTROL CENTER DATA									
CONTROL CENTER DESIGNATION	LINE VOLTS	CONNECTED LOAD (KVA)	SERVICE ENTRANCE CONDUCTOR SIZE - AWG	ENCLOSURE RATING (AMPS)	CIRCUIT NO.	CIRCUIT LOAD AMPS	CIRCUIT FUSE SIZE AMPS	CIRCUIT CABLE SIZE AWG	MAINTAINING AGENCY
Southbound (A)	240	7.1	PART OF OTHER PROJECT	PART OF OTHER PROJECT	A	29.75	40	4	ODOT
					-	-	-	-	
					-	-	-	-	
Northbound (B)	240	7.1	PART OF OTHER PROJECT	PART OF OTHER PROJECT	B	29.75	40	4	ODOT
					-	-	-	-	
					-	-	-	-	



LEGEND

- CONVENTIONAL LUMINARE
- HIGH MAST
- LIGHT PULL BOX
- 1 1/2" DUCT CABLE
- X" CONDUIT
- Ex. LIGHT PULL BOX
- Ex. DUCT CABLE
- Ex. CONDUIT

POLE IDENTIFICATION
 A: CONTROL CENTER & CIRCUIT
 1: # IN CIRCUIT

(A-1)