

STATE OF OHIO
DEPARTMENT OF HIGHWAYS
WYA-30N-(12.81-12.83)
WYA-23-(10.18-10.44)
WYA-53-(13.20-13.47)
WYANDOT COUNTY
VILLAGE OF UPPER SANDUSKY

FED. RD. DIVISION	STATE	PROJECT	TYPE FUNDS
2	OHIO	H.I.	1950

WYANDOT COUNTY
WYA-30N-(12.81-12.83)
WYA-23-(10.18-10.44)
WYA-53-(13.20-13.47)

CONVENTIONAL SIGNS

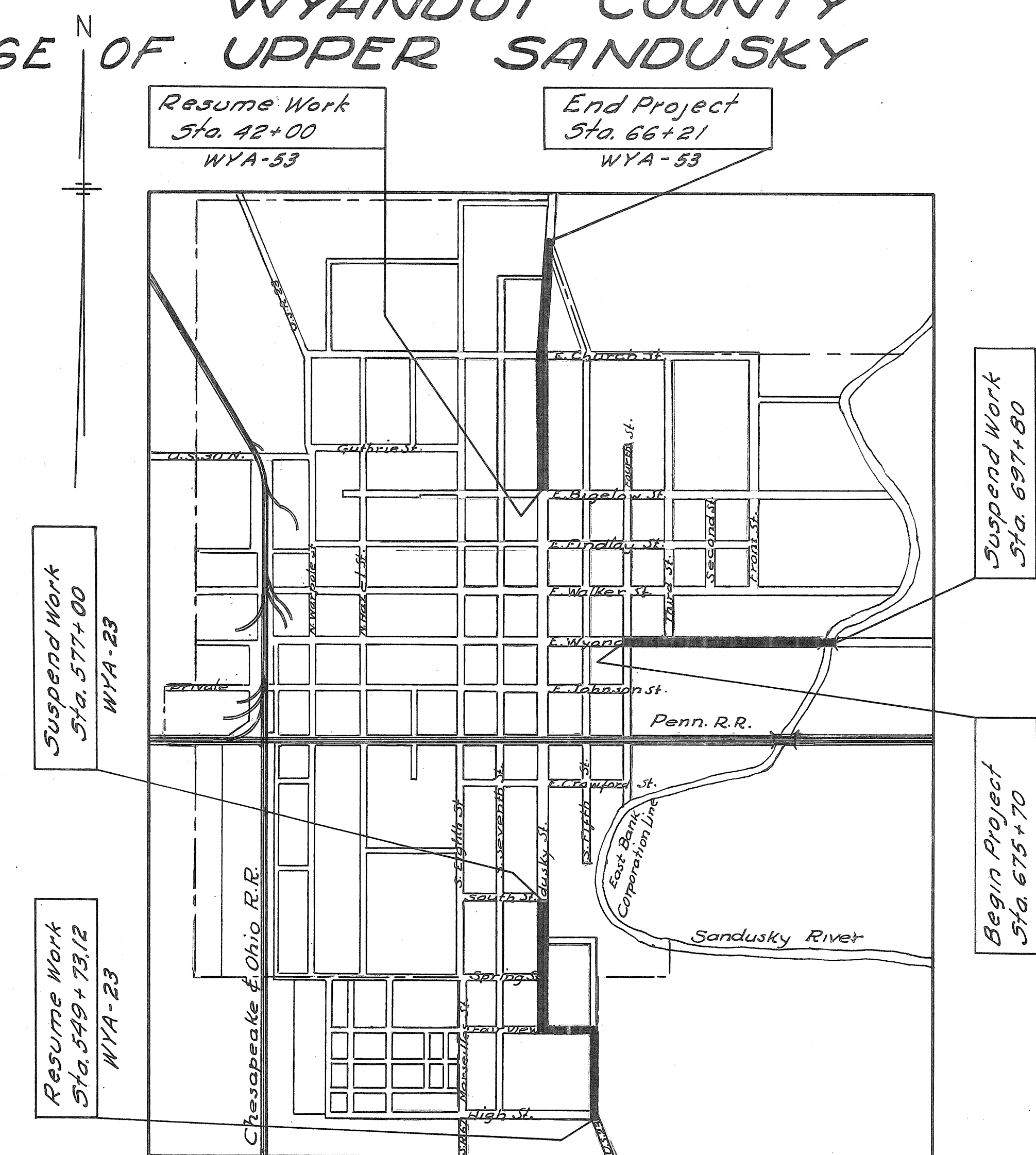
COUNTY LINE	-----
TOWNSHIP LINE	-----
SECTION LINE	-----
CORPORATION LINE	-----
FENCE LINE	-x-x-x-x-
CENTER LINE	-----
POLE LINE	⊕ ⊕ ⊕ ⊕ ⊕
STEAM RAILROAD	-----
GUARD RAIL, PROPOSED	-----
GUARD RAIL, EXISTING	-----
DRAIN PIPE, PROPOSED	-----
DRAIN PIPE, EXISTING	-----
PROPERTY LINE	-x-#L-x- #L-

INDEX OF SHEETS

TITLE SHEET	1
TYPICAL SECTIONS	2
GENERAL NOTES	3
SUMMARY	4
PLAN & PROFILE	5-10
CROSS SECTIONS	
TREE & STUMP SCHEDULE	
SPECIAL DETAILS	

LINE DATA

Begin Project (WYA-30N) Sta. 675+70
Suspend Work (WYA-30N) Sta. 697+80
Net Length of Work (WYA-30N) = 2210.00 Lin.Ft.
Resume Work (WYA-23) Sta. 549+73.12 (-A Equation)
Suspend Work (WYA-23) Sta. 577+00
Net Length of Work (WYA-23) = 2722.88 Lin.Ft.
Resume Work (WYA-53) Sta. 42+00
End Project (WYA-53) Sta. 66+21
Net Length of Work (WYA-53) = 2421.00 Lin.Ft.
Total Length of Project = 7353.88 Lin.Ft. or 1.392 Miles



DELIVERY POINT: UPPER SANDUSKY AVERAGE HAUL: 1 MILE

LOCATION PLAN

SCALE 1" = 1000'

PORTION TO BE IMPROVED
STATE HIGHWAYS
OTHER ROADS

SCALES

PLAN 1 INCH = FEET
PROFILE (HORIZONTAL) 1 INCH = FEET
PROFILE (VERTICAL) 1 INCH = FEET
CROSS SECTIONS 1 INCH = FEET

The Standard Specifications of the State of Ohio, Department of Highways, including changes and Supplemental Specifications listed in the proposal shall govern this improvement.

The right of way for this improvement will be provided by the State of Ohio.

I hereby approve these plans and declare that the making of this improvement will not require the closing of traffic of the highway and that provisions for the maintenance and safety of traffic will be as set forth on the plans and estimates.

Approved Walter J. Meidhardt
Date: 7-12-50 Resident Division Deputy Director

Approved W. M. Gausman
Date: 8/16/50 Chief Engineer, Bureau of Maintenance

Approved Richard Orth
Date: 8-8-50 Chief Engineer, Bureau of Bridges & RR Crossings

Approved M. L. Robinson
Date: 8-15-50 Chief Engineer, Bureau of Location & Design

Approved J. T. Schaeffer
Date: 8-15-50 First Assistant Director & Chief Engineer

Approved W. Miller
Date: 8-16-50 Director of Highways.

SUPPLEMENTAL SPECIFICATIONS					
NUMBER	DATE	NUMBER	DATE	NUMBER	DATE
31	6-13-49				
L-109.12	Rev. 7-15-50				
T-171.13	Rev. 7-31-50				

STANDARD DRAWINGS					
DRAWING	DATE	DRAWING	DATE	DRAWING	DATE
I, 1, 2, 3, 4 & 5	2-20-45				
Z-B C.B. 2-2-A & B	12-15-41				
L-3	4-1-50				
L-3-A	4-1-50				

CONSTRUCTION BUREAU
JUN 15 1955
GROUND PHOTOLAB

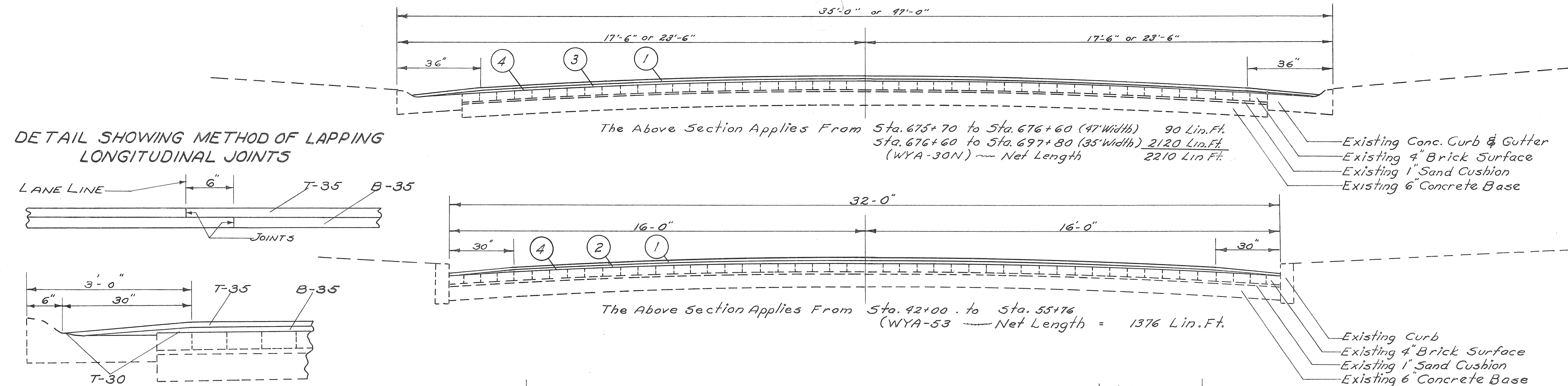
FILE No.	WYANDOT COUNTY
	SEC. WYA-30N-(12.81-12.83) WYA-23-(10.18-10.44) WYA-53-(13.20-13.47)
	DATE OF LETTING:
	CONTRACT No.:

TYPICAL SECTIONS TYPE T-35

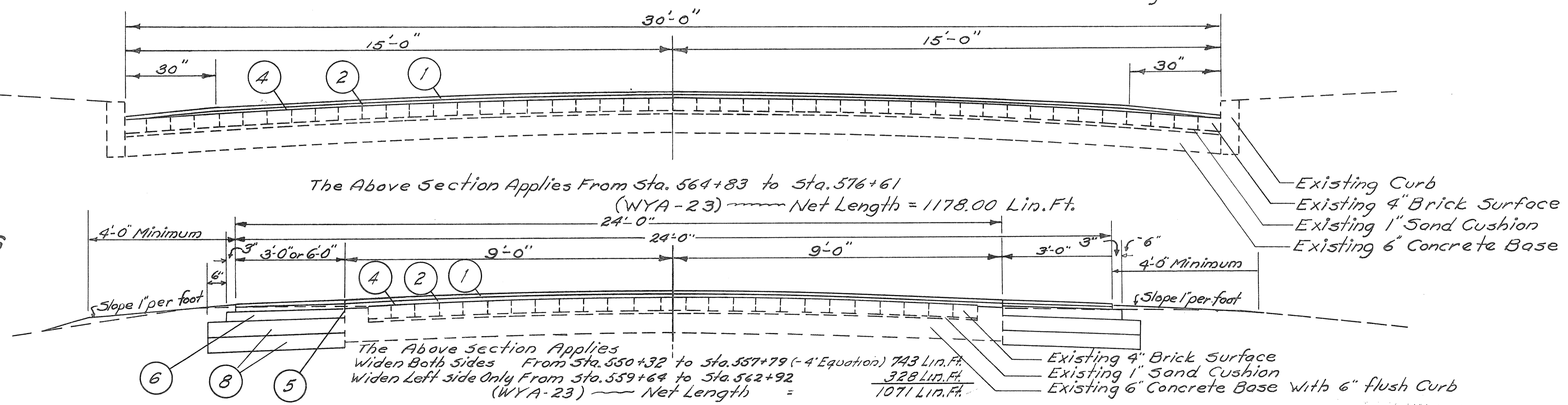
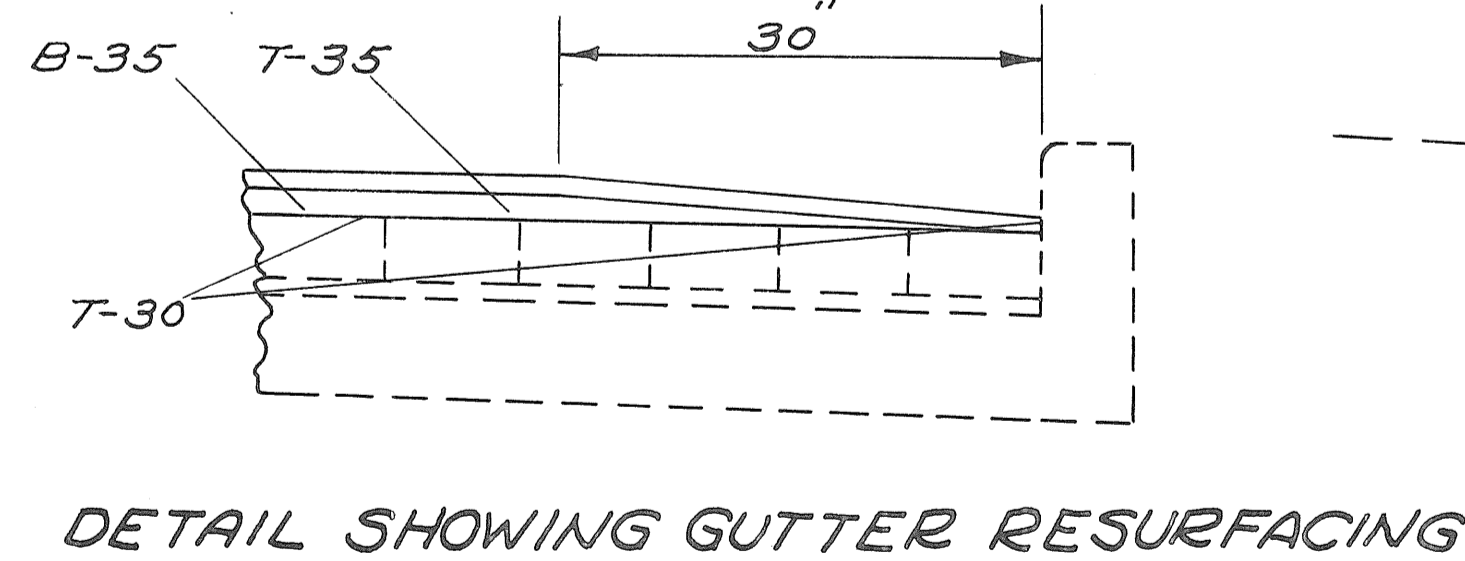
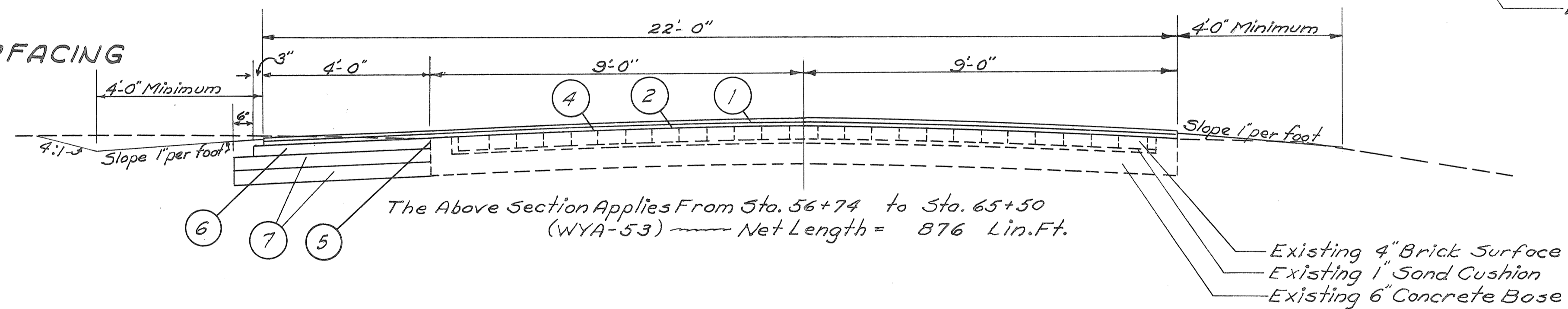
FED. RD. DIVISION	STATE	PROJECT	TYPE FUNDS
2	OHIO		1950

2
10

WYANDOT COUNTY
WYA-30N-112.81-12.83
WYA-23-10.18-10.44
WYA-53-13.20-13.47



DETAIL SHOWING GUTTER RESURFACING



- ① Item T-35 1" Asphaltic Concrete Surface Course Type "C"
- ② Item B-35 1" Minimum Thickness Asphaltic Concrete Leveling Course
- ③ Item B-35 1 1/2" Minimum Thickness Asphaltic Concrete Leveling Course
- ④ Item T-30 Bituminous Tack Coat Sec. M-55, M5-2 or 55-1 Applied at the rate of 0.10 Gal. per Sq. Yd. including No. 9 Aggregate cover at 2.5 pounds per Sq. Yd.
- ⑤ Item E-8 Sealing Only
- ⑥ Item B-35 3" Asphaltic Concrete Base Course
- ⑦ Item B-20 8" Waterbound Macadam Base Course (2-4" Courses)
- ⑧ Item B-20 10" Waterbound Macadam Base Course (2-5" Courses)

WYANDOT COUNTY
WYA-30N - (12.81-12.83)
WYA-23 - (10.18-10.44)
WYA-53 - (13.20-13.47)

PAVEMENT

COMPUTATIONS

WYA-23 - (10.18-10.44)

From Typical Sections

1071 Lin. Ft. X 24 ÷ 9 = 2856.00 Sq. Yds.
1178 Lin. Ft. X 30 ÷ 9 = 3926.67 Sq. Yds.
6782.67 Sq. Yds.

T-30 Bituminous Tack Coat

Area from above 6782.67 Sq. Yds.
Area from "P" Table (Sheet 7) 2011.37 Sq. Yds.
Add for Drives (12 Estimated) 180.00 Sq. Yds.
8974.04

Volume = 8974.04 Sq. Yds. X 0.10 Gal. = 897.40 Gals. Use 898 Gals.

T-35 1" Asphaltic Concrete Surface Course Type "C"

Area (Same as T-30) 8974.04 Sq. Yds.
Volume = 8974.04 Sq. Yds. X 1 ÷ 36 = 249.28 Cu. Yds. Use 250 Cu. Yds.

B-35 1" Minimum Thickness Asphaltic Concrete Leveling Course

Area from Typical Sections
1071 Lin. Ft. X 24 ÷ 9 = 2856.00 Sq. Yds.
1178 Lin. Ft. X 27.5 ÷ 9 = 3599.44 Sq. Yds.
Area from "P" Table 1851.48 Sq. Yds.
8306.92 Sq. Yds.

Volume = 8306.92 Sq. Yds. X 1 ÷ 36 = 230.75 Cu. Yds.
Add for Pavement Irregularities 84.29 Cu. Yds.
315.04 Cu. Yds. Use 315 Cu. Yds.

B-35 3" Asphaltic Concrete Base Course

Area from Typical Sections
743 Lin. Ft. X 6.5 ÷ 9 = 536.61 Sq. Yds.
328 Lin. Ft. X 6.25 ÷ 9 = 227.78 Sq. Yds.
Area from "P" Table 274.78 Sq. Yds.
1039.17 Sq. Yds.

Volume = 1039.17 Sq. Yds. X 3 ÷ 36 = 86.60 Cu. Yds. Use 87 Cu. Yds.

B-20 10" Waterbound Macadam Base Course (2-5" Courses)

Area from Typical Sections
743 Lin. Ft. X 7.5 ÷ 9 = 619.17 Sq. Yds.
328 Lin. Ft. X 6.75 ÷ 9 = 246.00 Sq. Yds.
Area from "P" Table 291.90 Sq. Yds.
1157.07 Sq. Yds.

Use 1157 Sq. Yds.

E-8 Sealing Only

Length from Typical Sections
743 Lin. Ft. X 2 = 1486.00 Lin. Ft.
328 Lin. Ft. X 1 = 328.00 Lin. Ft.
From "P" Table 367.00 Lin. Ft.
2181.00 Lin. Ft.

Use 2181 Lin. Ft.

I-17 Side Approaches, Mail Box Turnouts and Berm Material

10 Drives (Estimated) Use 7 Cu. Yds.

E-1 Roadway Excavation

Area (Same as B-20) 1157.00 Sq. Yds.
Volume = 1157 Sq. Yds. X 15 ÷ 36 = 482.08 Sq. Yds.

Use 482 Cu. Yds.

L-9 Seeding and Protecting Type "A"

Length from Typical Sections 1071.00 Lin. Ft.
Area = 743 Lin. Ft. X 12 ÷ 9 = 990.67 Sq. Yds.
328 Lin. Ft. X 6 ÷ 9 = 218.67 Sq. Yds.
1209.34 Sq. Yds.

Use 1210 Sq. Yds.

WYA-53 - (13.20-13.47)

From Typical Sections

1376 Lin. Ft. X 32 ÷ 9 = 4892.44 Sq. Yds.
876 Lin. Ft. X 22 ÷ 9 = 2141.33 Sq. Yds.
7033.77 Sq. Yds.

T-30 Bituminous Tack Coat

Area from above 7033.77 Sq. Yds.
Area from "P" Table (Sheet 10) 775.79 Sq. Yds.
Add for Drives (21 Estimated) 735.00 Sq. Yds.
8544.56 Sq. Yds.

Volume = 8544.56 Sq. Yds. X 0.10 Gal. = 854.46 Gals. Use 855 Gals.

T-35 1" Asphaltic Concrete Surface Course Type "C"

Area (Same as T-30) 8544.56 Sq. Yds.
Volume = 8544.56 Sq. Yds. X 1 ÷ 36 = 237.35 Cu. Yds. Use 238 Cu. Yds.

B-35 1" Minimum Thickness Asphaltic Concrete Leveling Course

Area from Typical Sections
1376 Lin. Ft. X 29.5 ÷ 9 = 4510.22 Sq. Yds.
876 Lin. Ft. X 22 ÷ 9 = 2141.33 Sq. Yds.
Area from "P" Table 775.79 Sq. Yds.
7427.34 Sq. Yds.

Volume = 7427.34 Sq. Yds. X 1 ÷ 36 = 206.32 Cu. Yds.
Add for Pavement Irregularities 94.00 Cu. Yds.
300.32 Cu. Yds. Use 300 Cu. Yds.

B-35 3" Asphaltic Concrete Base Course

Area from Typical Sections
876 Lin. Ft. X 4.25 ÷ 9 = 413.67 Sq. Yds.
Area from "P" Table 19.84 Sq. Yds.
433.51 Sq. Yds.

Volume = 433.51 Sq. Yds. X 3 ÷ 36 = 36.13 Cu. Yds. Use 37 Cu. Yds.

B-20 8" Waterbound Macadam Base Course (2-4" Courses)

Area from Typical Sections
876 Lin. Ft. X 4.75 ÷ 9 = 462.33 Sq. Yds.
Area from "P" Table 22.69 Sq. Yds.
485.02 Sq. Yds.

Use 485 Sq. Yds.

E-8 Sealing Only

Length from Typical Sections
876 Lin. Ft. X 1 = 876.00 Lin. Ft.
From "P" Table 47.00 Lin. Ft.
923.00 Lin. Ft.

Use 923 Lin. Ft.

I-17 Side Approaches, Mail Box Turnouts and Berm Material

9 Drives (Estimated) Use 6 Cu. Yds.

E-1 Roadway Excavation

Area (Same as B-20) 485.00 Sq. Yds.
Volume = 485 Sq. Yds. X 13 ÷ 36 = 175.14 Cu. Yds.
Add for shaping berm and gutter (Estimated) 45.00 Cu. Yds.
220.14 Cu. Yds.

Use 220 Cu. Yds.

L-9 Seeding and Protecting Type "A"

Length from Typical Sections 876.00 Lin. Ft.
Area = 876 Lin. Ft. X 12 ÷ 9 = 1168.00 Sq. Yds.

Use 1168 Sq. Yds.

WYA-30N - (12.81-12.83)

From Typical Sections

90 Lin. Ft. X 46 ÷ 9 = 460.00 Sq. Yds.
2120 Lin. Ft. X 34 ÷ 9 = 8008.88 Sq. Yds.
8468.88 Sq. Yds.

T-30 Bituminous Tack Coat

Area from above 8468.88 Sq. Yds.
Add for I-P (Sheet 5) 162.49 Sq. Yds.
Add for extra width on bridge (Sheet 6) 20.38 Sq. Yds.
Add for Drives (4 Estimated) 260.00 Sq. Yds.
8911.75 Sq. Yds.

Volume = 8911.75 Sq. Yds. X 0.10 Gal. = 891.20 Gals. Use 892 Gals.

T-35 1" Asphaltic Concrete Surface Course Type "C"

Area (Same as T-30) 8911.75 Sq. Yds.
Volume = 8911.75 Sq. Yds. X 1 ÷ 36 = 247.55 Cu. Yds. Use 248 Cu. Yds.

B-35 1 1/2" Minimum Thickness Asphaltic Concrete Leveling Course

Area from Typical Sections
90 Lin. Ft. X 43.5 ÷ 9 = 435.00 Sq. Yds.
2120 Lin. Ft. X 31.5 ÷ 9 = 7420.00 Sq. Yds.
Add for I-P (Sheet 5) 162.49 Sq. Yds. X 1/2 Feathering 81.25 Sq. Yds.
Add for extra width on bridge (Sheet 6) 20.38 Sq. Yds.
7956.63 Sq. Yds.

Volume = 7956.63 Sq. Yds. X 1.5 ÷ 36 = 331.53 Cu. Yds.
Add for Pavement Irregularities 52.27 Cu. Yds.
383.80 Cu. Yds. Use 384 Cu. Yds.

E-8 Removal and Disposal of Existing Wearing Course

Area from Sheet 5 79.00 Sq. Yds.
Area from Sheet 6 110.00 Sq. Yds.
189.00 Sq. Yds.

Use 189 Sq. Yds.

WYANDOT COUNTY
WYA-30N-(12.81-12.83)
WYA-23-(10.18-10.44)
WYA-53-(13.20-13.47)

G E N E R A L N O T E S

TRAFFIC

Traffic shall be maintained at all times. The length of one way traffic zones shall be kept to a minimum consistent with the requirements of Sec. T-35.23

The item of "Maintaining Traffic" shall include furnishing lights signs, barricades and watchman to secure the flow of traffic twenty four hours daily. Should the Director deem it desirable to establish a temporary route during the working day only, for the safety of workmen and traffic and to insure best construction results, the Contractor shall furnish all flagmen necessary to properly direct traffic.

FILLING MAJOR DEPRESSIONS

Major depressions in the existing pavement shall be filled and compacted with asphaltic concrete leveling course material in advance of placing the regular leveling course.

The depressions shall be filled in layers not to exceed three (3) inches in depth when compacted.

MANHOLES ADJUSTED TO GRADE

This item shall be performed after completion of the leveling course and prior to the placing of the surface course. Portions of existing pavement removed to adjust castings to the grade of the new surface shall be replaced with Class "C" concrete finished flush with the new leveling course.

The necessary adjustment of the structure walls may be made with Class "C" concrete or brick and mortar construction.

The minimum depth of the new work shall be eight (8) inches. The cost of the material and labor shall be included in the unit price bid for I-8 Manholes Adjusted to Grade.

Compaction of material around manholes inaccessible to rollers shall be in accordance with requirements of Sec. T-50.21

UTILITIES

Any and all work required for adjustment of Private Utilities will be done by and at the expense of their respective owners unless otherwise noted on these plans.

CATCH BASINS

Standard No. 2-2B Catch Basin shall be modified by being constructed without side inlets.

L-9 SEEDING AND PROTECTING TYPE "A"

Quantities for seeding Item L-9 are calculated for area extending 2 feet beyond work limits.

All areas outside of these limits where the vegetative growth has been injuriously disturbed or destroyed by the Contractor shall be restored and seeded in accordance with the provisions of Item L-9 by the Contractor at his own expense.

Where practical an approved Power Driven Rotary Type Mixing Machine may be used to incorporate mulch into soil in the seeding operation. On all other areas the mulch shall be held in place by the twine and spike method as outlined under Standard Drawings L-3 and L-3-A. These areas shall be designated by the Engineer.

Seed bed shall be prepared to a depth of two (2) inches

SEED MIXTURE

Specifications L-9 Type "A" shall be followed except that the seed mixture used shall be as follows:

60% Kentucky Blue Grass

20% Fancy Red Top

10% Timothy

10% Perennial Rye Grass

Final Payment on L-9 seeding to be made on actual quantities resulting from actual measurements.

COMMERCIAL FERTILIZER

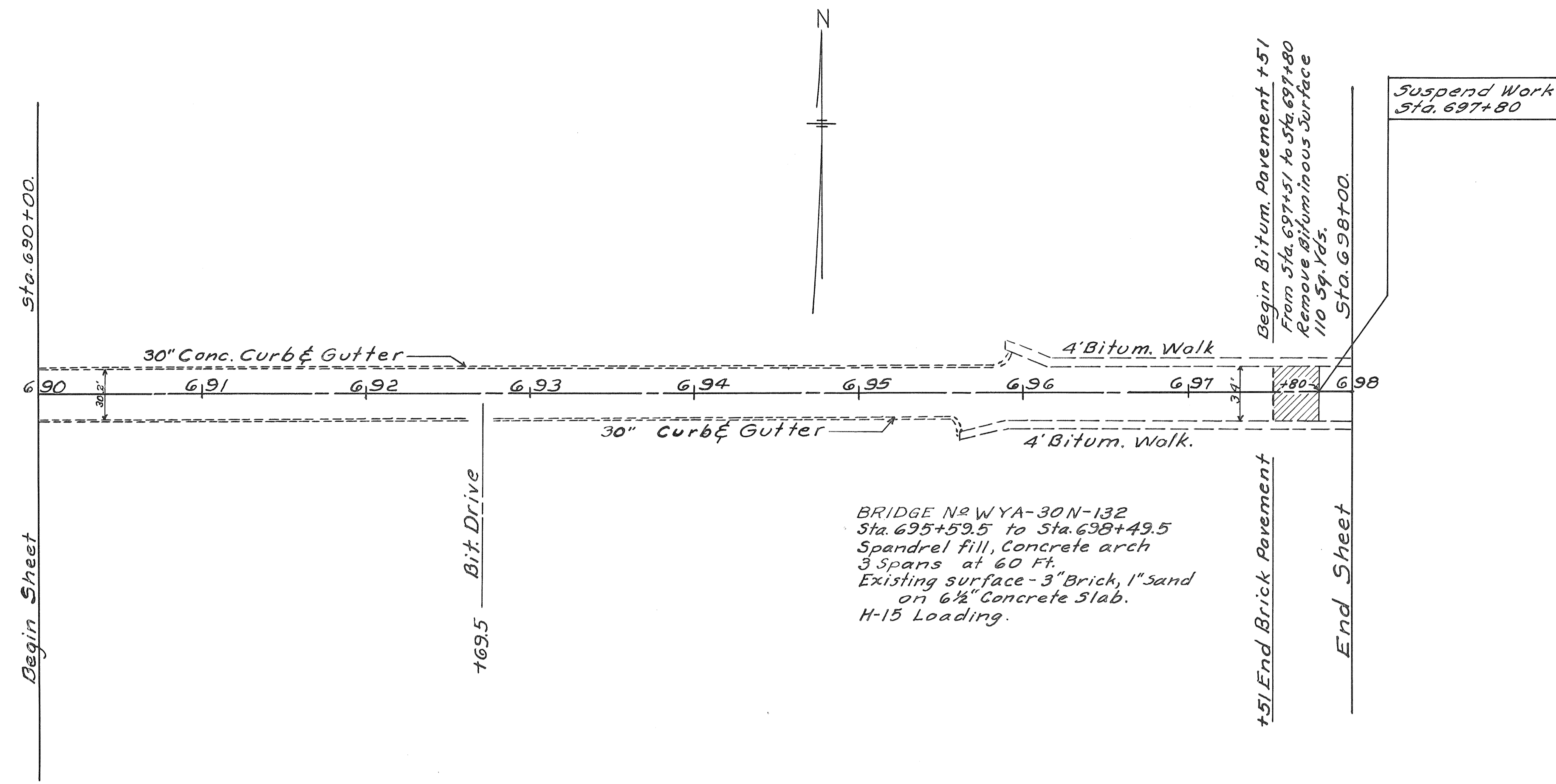
Formula 10-6-4 shall be applied at the rate of 20 Lbs. per 1000 sq. Ft. on all areas to be seeded

G E N E R A L S U M M A R Y

Item	WYA-30N	WYA-23	WYA-53	Total	Unit	DESCRIPTION
E-1		482	220	702	Cu.Yd.	Roadway Excavation
E-8		34		34	Lin.Ft.	Removal and Disposal of Existing Curb
E-8	189	232	86	507	Sq.Yd.	Removal and Disposal of Existing Wearing Course
I-2		9		9	Lin.Ft.	8" Storm Sewer Under Pavement
I-8		1		1	Each	Standard No. 2-2B Catch Basins, Modified
I-8	2	1	4	7	Each	Manholes Adjusted to Grade
I-16		1		1	Each	Catch Basins Abandoned
I-17		7	6	13	Cu.Yd.	Side Approaches, Mail Box Turnouts and Berm Material
L-9		1210	1168	2378	Sq.Yd.	Seeding and Protecting Type "A" As Per Plan
L-9		0.11	0.11	0.22	Ton	Commercial Fertilizer (10-6-4)
T-35	248	250	238	736	Cu.Yd.	Asphaltic Concrete Surface Course Type "C" (70-80)
B-35	384	315	300	999	Cu.Yd.	Asphaltic Concrete Leveling Course (70-80)
B-35		87	37	124	Cu.Yd.	Asphaltic Concrete Base Course (70-80)
T-30	892	898	855	2645	Gals.	Bituminous Tack Coat Sec. M-5.5, M5-2 or 55-1 as per Plan.
B-20			486	486	Sq.Yd.	8" Waterbound Macadam Base Course (2-4" Courses)
B-20		1157		1157	Sq.Yd.	10" Waterbound Macadam Base Course (2-5" Courses)
E-8		2181	923	3104	Lin.Ft.	Sealing Only

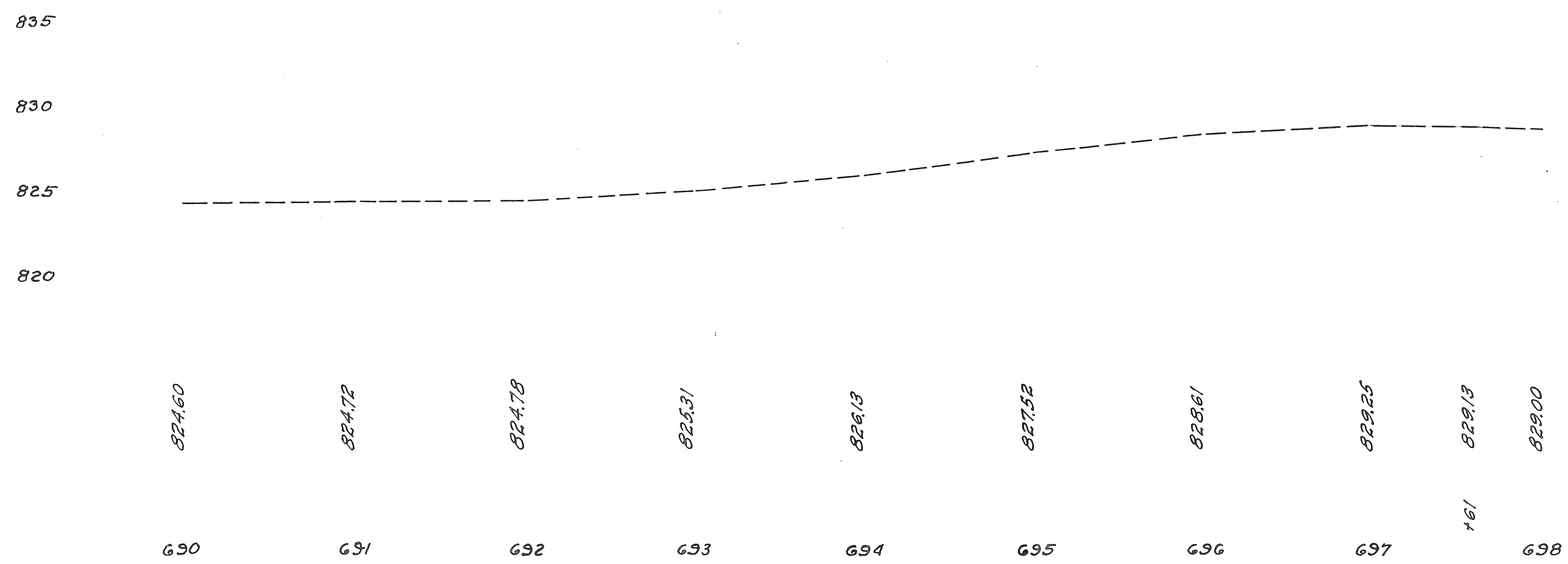
SHOULDERS:

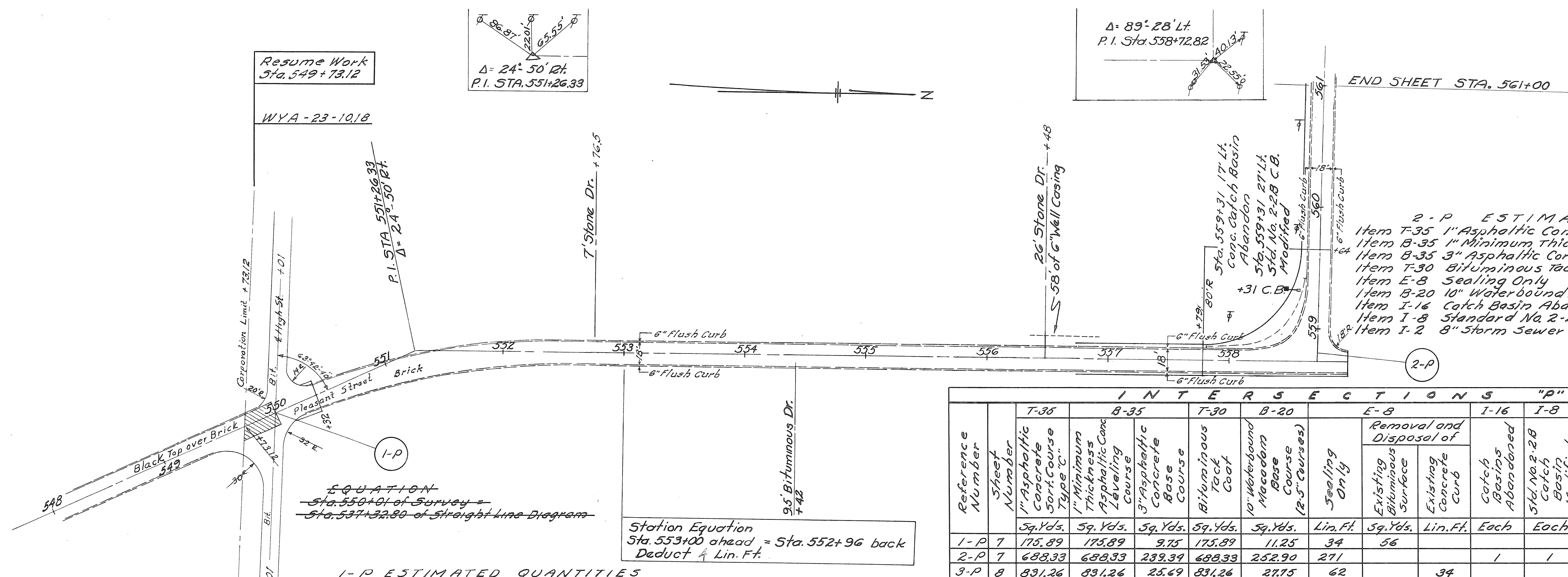
Shoulders to be constructed of earth excavated during the process of widening the pavement and the shaping of the gutter. Any excess excavation shall be used to widen berms beyond the 4' minimum at various locations or wasted, as directed by the Engineer.



BRIDGE NO WYA-30N-132
 Sta. 695+59.5 to Sta. 698+49.5
 Spandrel fill, Concrete arch
 3 Spans at 60 Ft.
 Existing surface - 3" Brick, 1" sand
 on 6 1/2" Concrete Slab.
 H-15 Loading.

Note:- The profile of the proposed surface course shall be approximately 2 1/2 inches above that of the existing pavement





2-P ESTIMATED QUANTITIES

Item T-35	1" Asphaltic Concrete Surface Course Type "C"	688.33	Sq. Yds.
Item B-35	1" Minimum Thickness Asphaltic Concrete Levelling Course	688.33	Sq. Yds.
Item B-35	3" Asphaltic Concrete Base Course	239.34	Sq. Yds.
Item T-30	Bituminous Tack Coat	688.33	Sq. Yds.
Item E-8	Sealing Only	271.00	Lin. Ft.
Item B-20	10" Waterbound Macadam Base Course (2.5" Courses)	252.90	Sq. Yds.
Item I-16	Catch Basin Abandoned	1	Each
Item I-8	Standard No. 2-2B Catch Basin Modified	1	Each
Item I-2	8" Storm Sewer Under Pavement	9	Lin. Ft.

INTERSECTIONS "P"

Reference Number	Sheet Number	T-35					E-8		I-16		I-8		I-2	
		1" Asphaltic Concrete Surf. Course Type "C"	1" Minimum Thickness Asphaltic Conc. Levelling Course	3" Asphaltic Concrete Base Course	Bituminous Tack Coat	10" Waterbound Macadam Base Course (2.5" Courses)	Sealing Only	Removal and Disposal of Existing Bituminous Surface	Existing Concrete Curb	Catch Basins Abandoned	Std No. 2-2B Catch Basin Modified	8" Storm Sewer Under Pavement		
		Sq. Yds.	Sq. Yds.	Sq. Yds.	Sq. Yds.	Sq. Yds.	Lin. Ft.	Sq. Yds.	Lin. Ft.	Each	Each	Lin. Ft.		
1-P	7	175.89	175.89	9.75	175.89	11.25	34	56						
2-P	7	688.33	688.33	239.34	688.33	252.90	271			1	1	9		
3-P	8	831.26	831.26	25.69	831.26	27.75	62		34					
4-P	8	45.59			45.59									
5-P	8	94.05			94.05									
6-P	8	176.25	156.00		176.25									
Total		2011.37	1851.48	274.78	2011.37	291.90	367	232	34	1	1	9		

EQUATION
 Sta. 550+01 of Survey =
 Sta. 557+32.80 of Straight Line Diagram

Station Equation
 Sta. 553+00 ahead = Sta. 552+96 back
 Deduct 4 Lin. Ft.

1-P ESTIMATED QUANTITIES

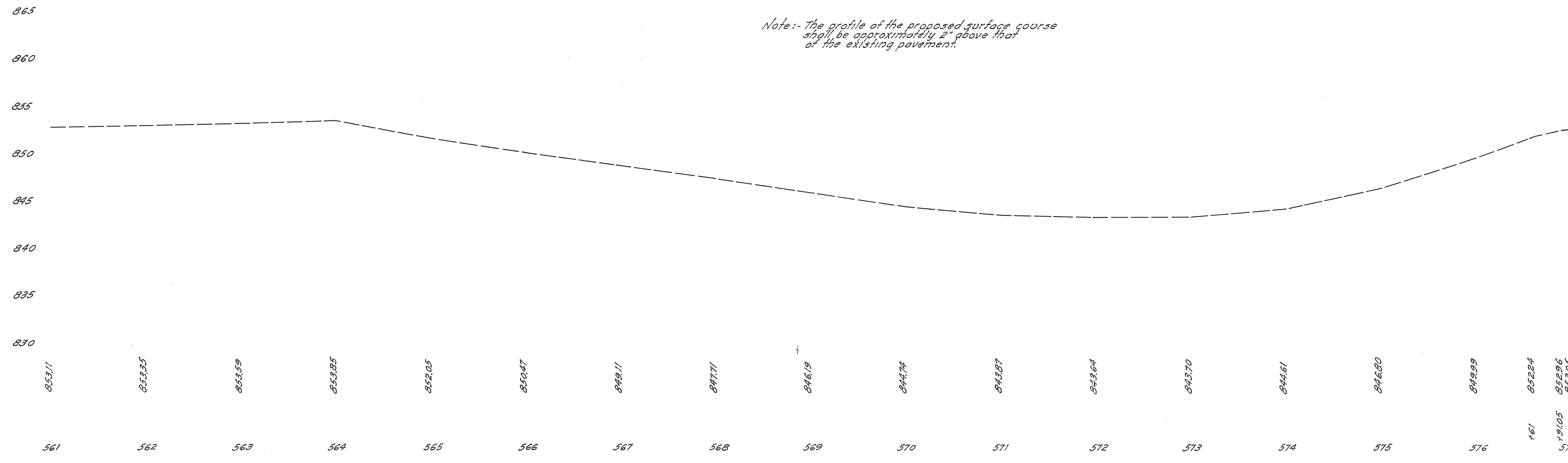
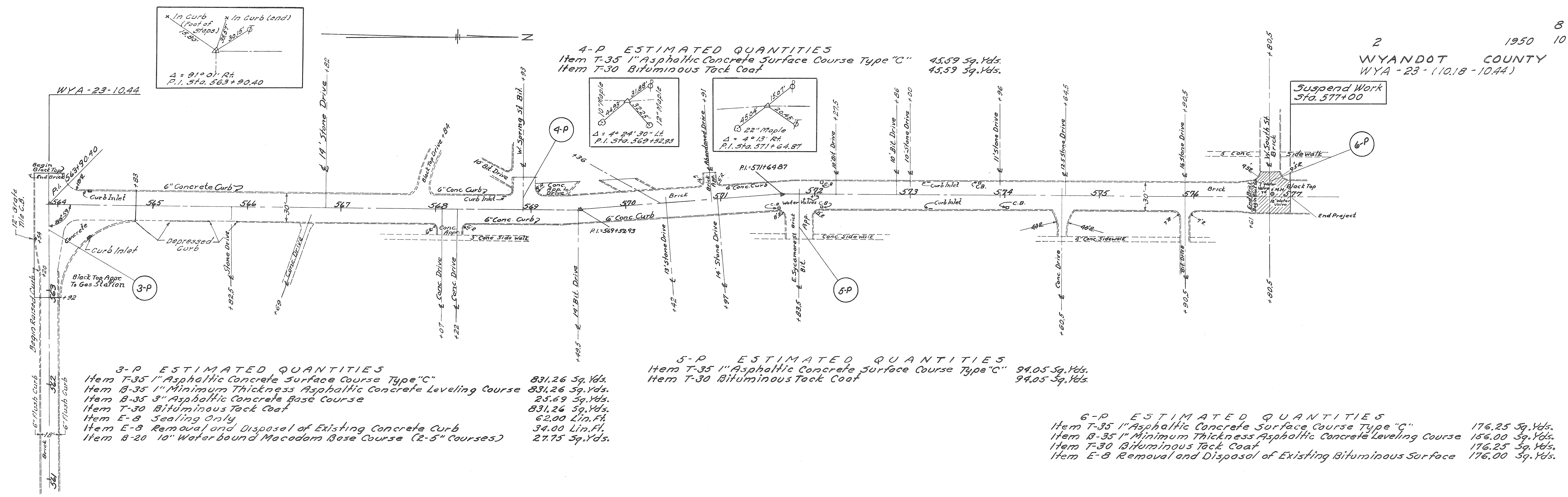
Item T-35	1" Asphaltic Concrete Surface Course Type "C"	175.89	Sq. Yds.
Item B-35	1" Minimum Thickness Asphaltic Concrete Levelling Course	175.89	Sq. Yds.
Item B-35	3" Asphaltic Concrete Base Course	9.75	Sq. Yds.
Item T-30	Bituminous Tack Coat	175.89	Sq. Yds.
Item E-8	Sealing Only	34.00	Lin. Ft.
Item E-8	Removal and Disposal of Existing Bituminous Surface	56.00	Sq. Yds.
Item B-20	10" Waterbound Macadam Base Course (2.5" Courses)	11.25	Sq. Yds.

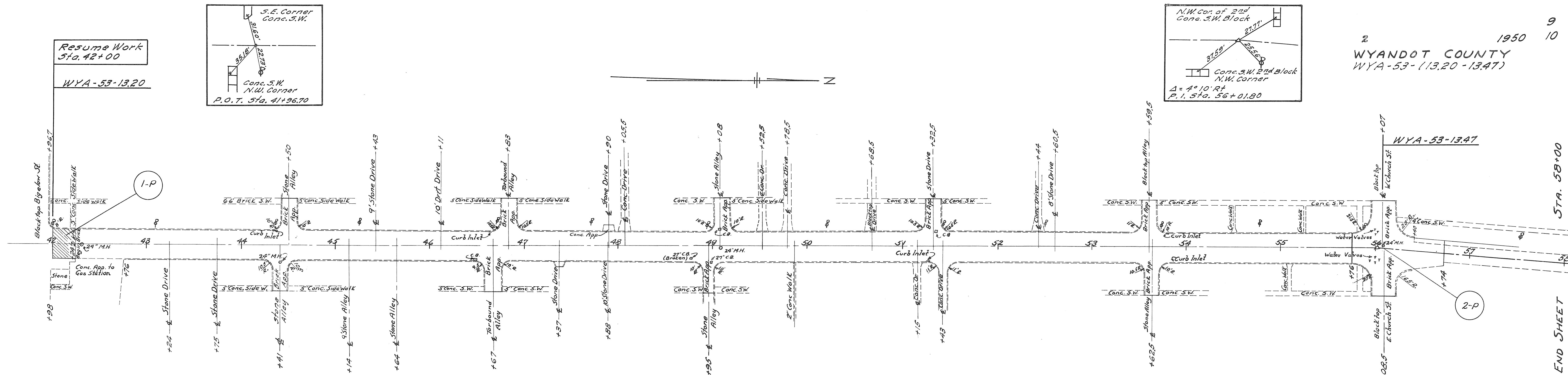
Note:- The profile of the proposed surface course shall be approximately 2" above that of the existing pavement.

860
855
850
845
840
835

852.21 852.65 852.92 852.41 852.63 852.56 852.71 852.75 852.72 +72.82 852.82 852.81 852.83 853.11

550 551 552 553 554 555 556 557 558 559 560 561





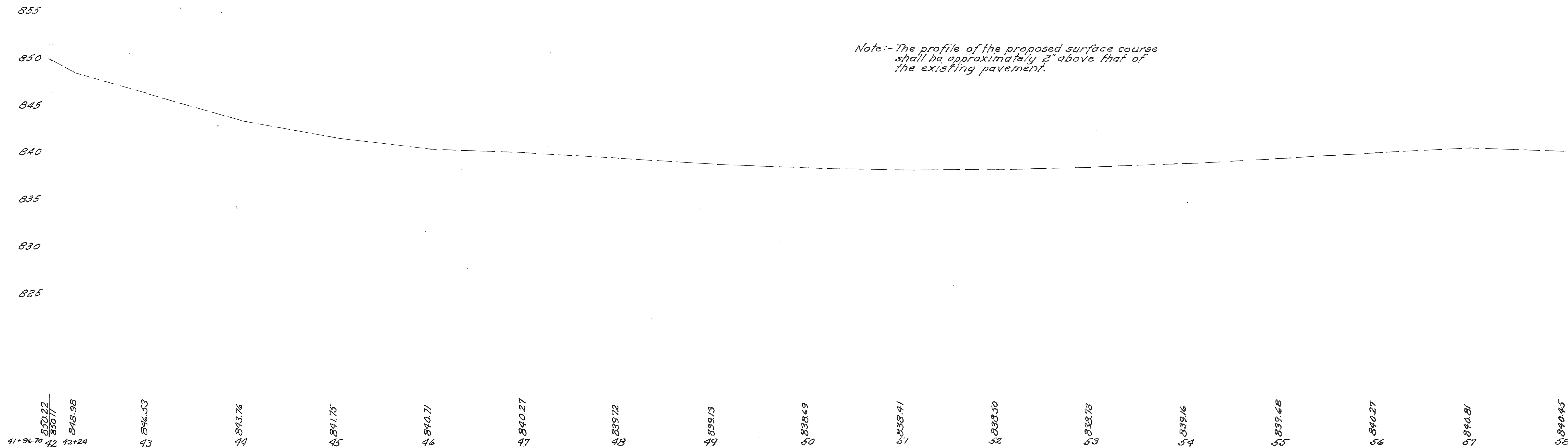
1-P ESTIMATED QUANTITIES
 Item E-B Removal and Disposal of Existing Bituminous Surface Course 86 Sq.Yds.

2-P ESTIMATED QUANTITIES
 Item T-35 1" Asphaltic Concrete Surface Course Type "C" 573.56 Sq.Yds.
 Item B-35 1" Minimum Thickness Asphaltic Concrete Leveling Course 573.56 Sq.Yds.
 Item B-35 3" Asphaltic Concrete Base Course 16.06 Sq.Yds.
 Item T-30 Bituminous Tack Coat 573.56 Sq.Yds.
 Item E-8 Sealing Only 34.00 Lin.Ft.
 Item B-20 8" Waterbound Macadam Base Course (2-4" Courses) 17.94 Sq.Yds.

Bench Mark Spike in 8" 22's Lt.
 of Sta. 42+00
 Elevation 850.86

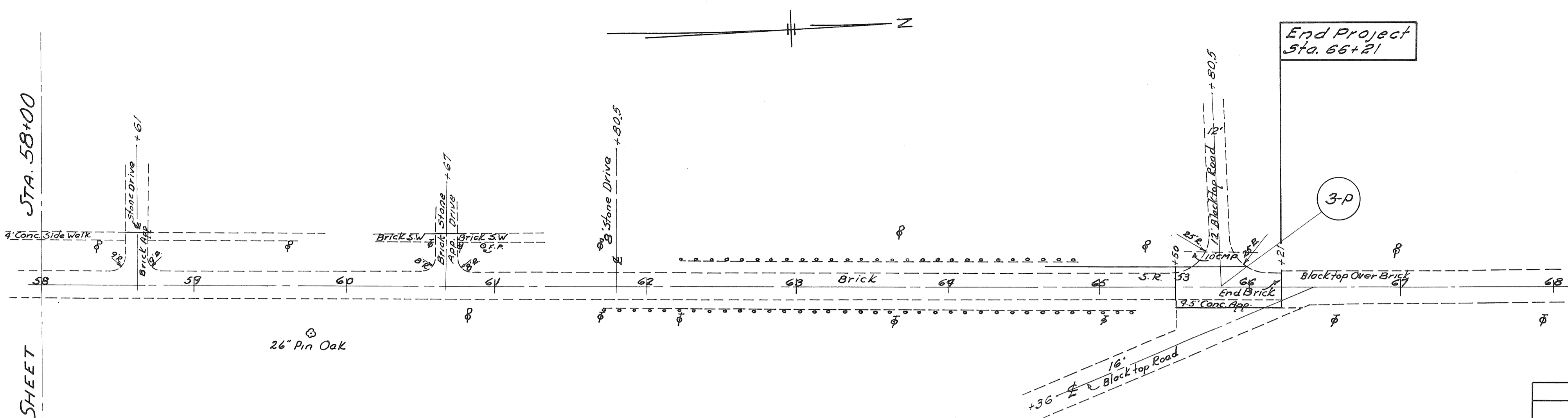
Bench Mark Spike in 8" 24' Lt.
 of Sta. 51+43.5
 Elevation 839.81

Bench Mark Spike in 8" 25' Lt.
 of Sta. 57+52
 Elevation 841.19



Note:- The profile of the proposed surface shall be approximately 2" above that of the existing pavement.

END SHEET



3-P ESTIMATED QUANTITIES

Item T-35	1" Asphaltic Concrete Surface Course Type "C"	202.23 Sq. Yds.
Item B-35	1" Minimum Thickness Asphaltic Concrete Leveling Course	202.23 Sq. Yds.
Item B-35	3" Asphaltic Concrete Base Course	3.78 Sq. Yds.
Item T-30	Bituminous Tack Coat	202.23 Sq. Yds.
Item E-8	Sealing Only	13.00 Lin. Ft.
Item B-20	8" Waterbound Macadam Base Course (2-4" Courses)	4.75 Sq. Yds.

Bench Mark Spike in # 26.5 Lt.
 of Sta. 63+69
 Elevation 835.72

Reference Number	Sheet Number	INTERSECTIONS					"P"	
		T-35	B-35	T-30	B-20	E-8		
		Sq. Yds.	Sq. Yds.	Sq. Yds.	Sq. Yds.	Sq. Yds.	Lin. Ft.	Sq. Yds.
1-P	9							86
2-P	9	573.56	573.56	16.06	573.56	17.94	34	
3-P	10	202.23	202.23	3.78	202.23	4.75	13	
Total		775.79	775.79	19.84	775.79	22.69	47	86

