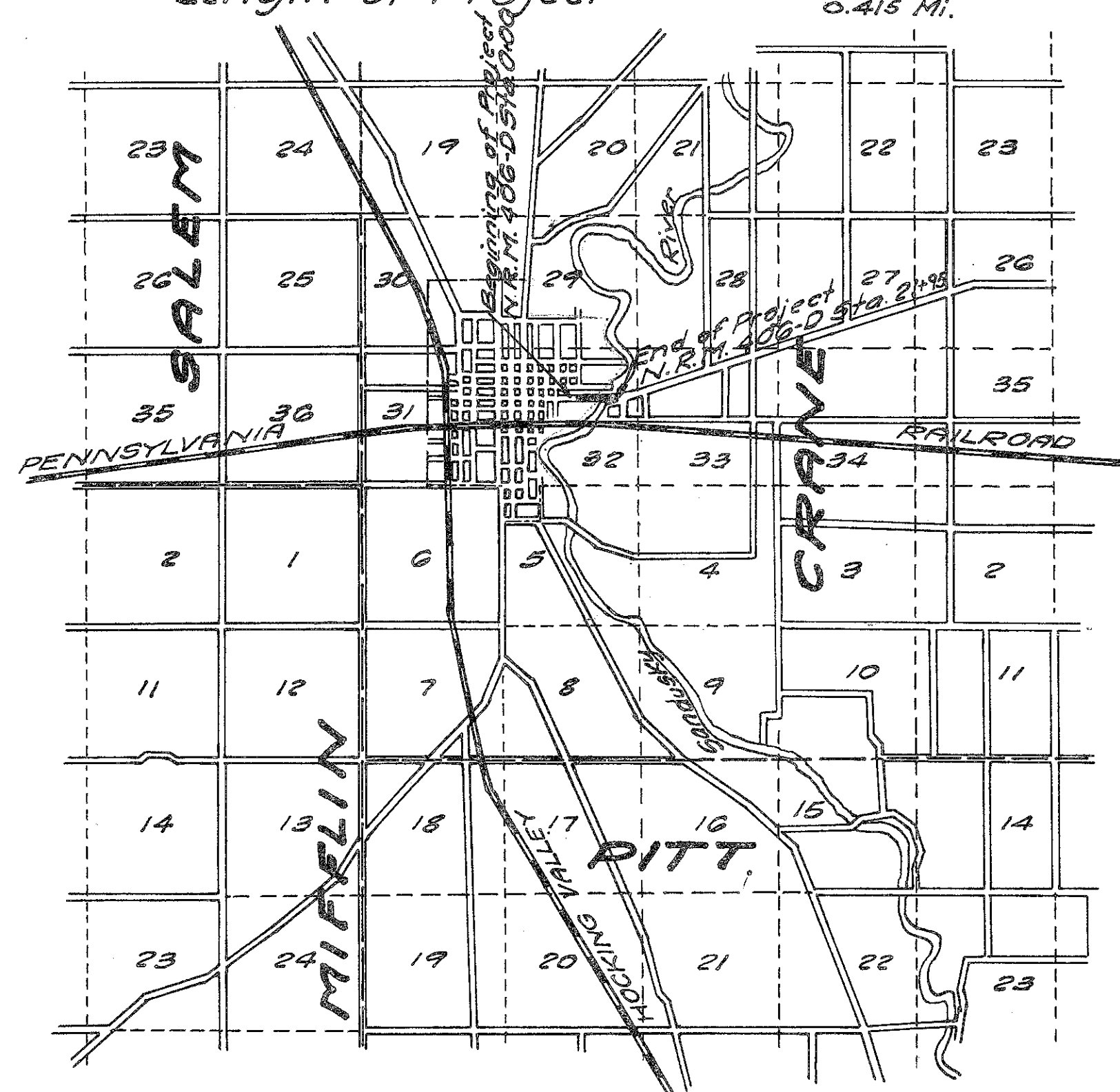


STATE OF OHIO
DEPARTMENT OF HIGHWAYS
BUCYRUS-UPPER SANDUSKY ROAD
S.H. 200 SEC UPPER SANDUSKY (pt.)
WYANDOT COUNTY

CRANE TOWNSHIP
LANDSCAPE PROJECT

Length of Project 2195 Ft. 0.415 Mi.



LOCATION PLAN

Scale of Miles

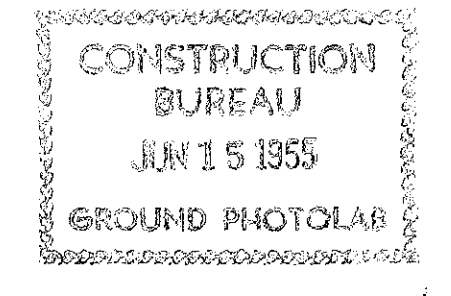


Portion to be improved

The Standard Specifications of the State of Ohio, Department of Highways, together with the Special Provisions for United States Public Works Highway Projects, and Supplemental Specification No. 2, (1-31-35) in force on date of contract, will govern this improvement.

I hereby approve these plans and declare that the making of this improvement, will not require that the highway be closed to traffic, and that provisions for the maintenance of traffic will be as set forth in the plans and estimates. The necessary Right of Way has been provided.

- Approved W. J. DeLoach P.E. #516.
Date: 1-16-35 Resident District Deputy Director
- Approved J. H. ...
Date: 1-16-35 Resident Division Deputy Director
- Approved _____
Date: _____ Chief Engineer Bureau of Bridges
- Approved Edmund Hilmy P.E.
Date: 1-14-35 Chief Engineer Bureau of Construction
- Approved _____
Date: _____ Chief Engineer Bureau of Maintenance
- Approved Carl J. Wable P.E. 69.
Date: 2/5/35 First Asst Director & Chief Engineer
- Approved John Foster Jr.
Date: 2/4/35 Director of Highways
- Recommended for Approval _____
Date: _____ District Engineer Bureau of Public Roads
- Recommended for Approval _____
Date: _____ Chief Engineer Bureau of Public Roads
- Approved _____
Date: _____ Chief of Bureau
- Approved S. J. ...
Date: 1-17-35 Mayor City of Upper Sandusky
- Approved Jessie R. ...
Date: Jan 17, 1935 Clerk City of Upper Sandusky



CONVENTIONAL SIGNS

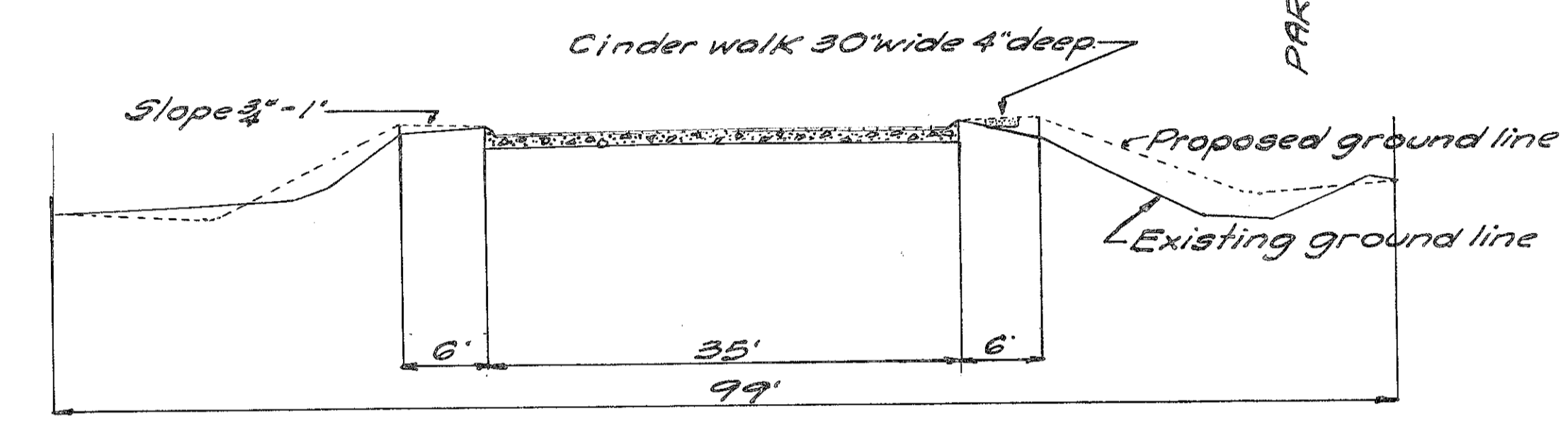
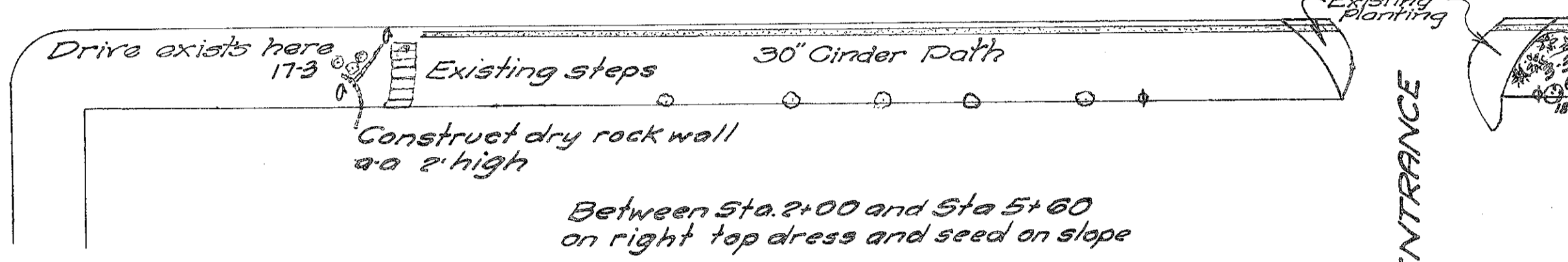
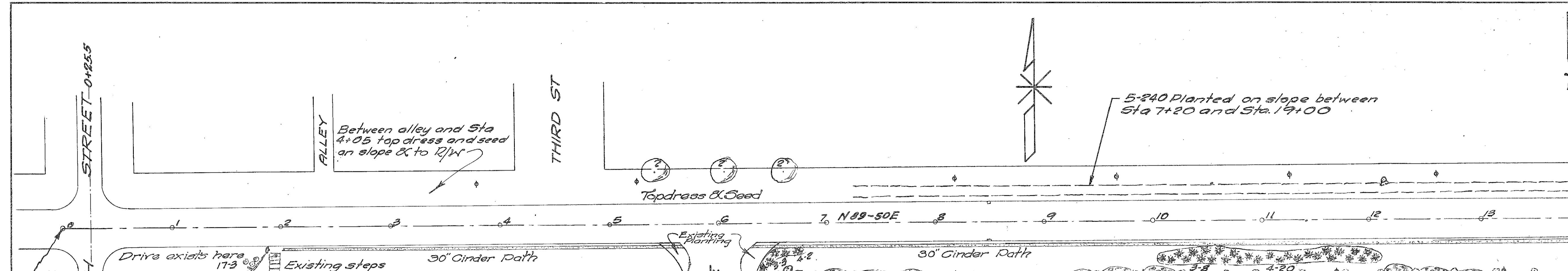
- Railroad
- Township line
- Corporation line
- Telephone & Power Poles
- Existing Trees
- Proposed Trees
- Shrubbery Beds
- Fence Line
- Evergreens

240
See Upper Sandusky

CHECKING RECORD		
OFFICE	BY	DATE
Resident		
Division		
Central Construction	T.Z.F.	1-30-35
Central Bridges		
Bureau of Public Roads		



PLANNING ENGINEER APPROVAL	
By <u>J. H. ...</u>	Date: 1-2-35
Planning Engineer	
Remarks: _____	



Sta. 0+0 of Original F.A.R. 406-D = Sta. 0+0 Beginning of U.S.P.W.H.P. No. Ohio N.R.M. 406-D Unit (1935)

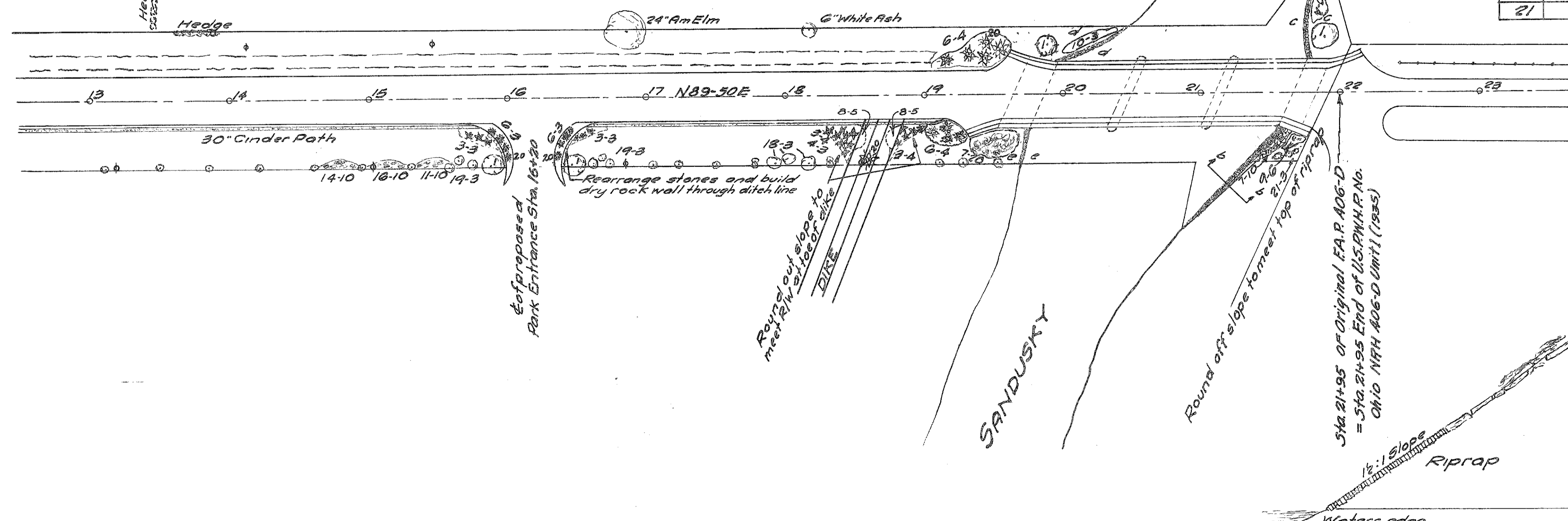
CITY PARK

KEY	QUANTITY	NAME	SIZE		SPACED
			CAL.	HEIGHT	
1	4	Salix vitellina pendula (specimen)		8'-10"	as shown
2	3	Ulmus americana	14"-12"	8'-10"	50'
3	25	Juniperus communis depressa B&B (18")	3-3 1/2 Spread		8'
4	25	Juniperus communis depressa aurea B&B (18")	3-3 1/2 Spread		8'
5	240	Bignonia radicans		2 Year	6'-8'
6	14	Juniperus chinensis pfitzeriana B&B (18")		3-4	8'
7	30	Rosa rugosa (Climbing) Max Graf.		2 Year	8'-10'
8	10	Viburnum opulus nanum		18" 24"	4'-0"
9	6	Viburnum cassinoides		3-4'	6'-8'
10	10	Cercis canadensis B&B (18")		4-5'	8'-10'
11	20	Forsythia intermedia spectabilis		3-4'	6'-8'
12	20	Lonicera marrowi		4-5'	6'-8'
13	10	Eunonymus alatus		4-5'	8'-10'
14	20	Cydonia japonica		2-3'	6'-8'
15	5	Hamamelis virginiana		4-5'	8'-10'
16	20	Syringa vulgaris		4-5'	8'-10'
17	3	Prunus americana newport B&B (22")		5-6'	as shown
18	6	Malus floribunda B&B (22")		5-6'	12-15'
19	6	Malus ioensis bechteli B&B (22")		5-6'	12-15'
20	4	Pinus nigra B&B (22")		6'	as shown
21	3	Viburnum carlesi B&B (18")		3-4'	6'-8'

Earth Fill (Borrow) 2412 Cu. Yd.
Riprap 138 Sq. Yd.
Sod 4090 Sq. Yd.
Area to be top dressed and seeded 1550 Sq. Yd.
Area to be seeded 1046 Sq. Yd.
Cinder Walk 448 Sq. Yd.

Note: In all items manure, top soil, preparation etc. not included in above estimate, but included in unit cost per item.

Note: Figures appearing after "B&B" is minimum size ball, given in inches.



SECTION b-b Showing riprap on slope

SUMMARY OF QUANTITIES

KEY	QUANTITY	NAME	SIZE
1	4	<i>Salix vitellina</i> - Golden Weeping Willow (specimen)	8'-10'
2	3	<i>Ulmus americana</i> - American Elm	8'-10'
3	25	<i>Juniperus communis depressa</i> - Prostrate Juniper	B&B. not less than 18" ball
4	25	<i>Juniperus communis depressa aurea</i> - Golden Prostrate Juniper	B&B. not less than 18" ball
5	240	<i>Bignonia radicans</i> - Trumpet Creeper	2 Years
6	14	<i>Juniperus chinensis pfitzeriana</i> - Pfitzer Juniper	B&B. not less than 18" ball
7	30	<i>Rosa rugosa</i> Max Graf (Climbing rugosa rose)	2 Year
8	10	<i>Viburnum opulus nanum</i> - Dwarf Cranberry bush	18"-24"
9	6	<i>Viburnum cassinoides</i> - White Rod	3'-4'
10	10	<i>Cercis canadensis</i> - Red Bud	B&B. not less than 18" ball
11	20	<i>Forsythia intermedia spectabilis</i> - Showy Border Forsythia	3'-4'
12	20	<i>Lonicera morrowi</i> - Morrow Honeysuckle	4'-5'
13	10	<i>Eunonymus Alatus</i> - Winged Eunonymus	4'-5'
14	20	<i>Cydonia japonica</i> - Flowering quince	2'-3'
15	5	<i>Hamamelis virginiana</i> - Witch Hazel	4'-5'
16	20	<i>Syringa vulgaris</i> - Common purple Lilac	4'-5'
17	3	<i>Prunus americana newport</i> - Purple leaved American Plum	B&B. not less than 22" ball
18	6	<i>Malus floribunda</i> - Japanese Flowering Crab	B&B " " " " "
19	6	<i>Malus ioensis bechteli</i> - Bechtels Flowering Crab	B&B " " " " "
20	4	<i>Pinus nigra</i> - Austrian Pine	B&B. not less than 28" ball
21	3	<i>Viburnum carlesi</i> - Fragrant Viburnum	B&B. not less than 18" ball

Earth Fill (Borrow)	2412 Cu. Yd.
Riprap	136 Sq. Yd.
Sod	4090 Sq. Yd.
Area to be top dressed and seeded	1550 Sq. Yd.
Area to be seeded	1046 Sq. Yd.
Cinder Walk	445 Sq. Yd.
Rearrange stones at Park entrance	Lump Sum
Maintaining traffic	Lump Sum