



CUY-90-14.90

PID 77332/85531

APPENDIX EX-73

CUY-077-0523 PID 20580

(Reference Document)

State of Ohio
Department of Transportation
Jolene M. Molitoris, Director

**Innerbelt Bridge
Construction Contract Group 1 (CCG1)**

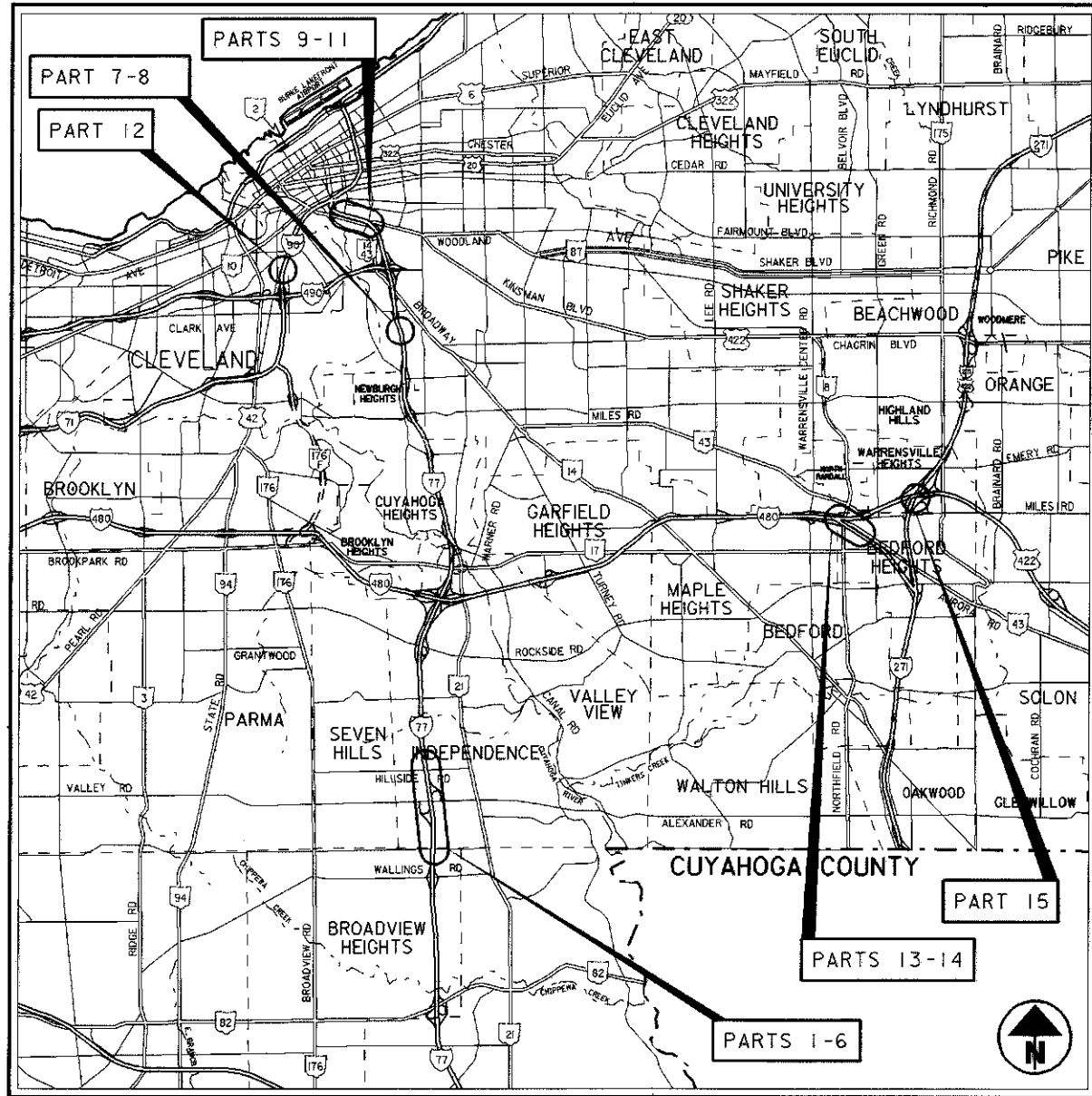
OHIO DEPARTMENT OF TRANSPORTATION

PLAN NO.

PLOT SUBMITTED: 19-AUG-1999 11:13

20580GTA.DGN

PLOTTED BY: jgrmorse
PLOTTED FROM: E:\PROJECTS\p1\d20580B\20580GTA.DGN



LATITUDE: N 41°21'06"

LONGITUDE: W 81°39'00"

X CUY - IR 77 - 5.23/VARIOUS
000088 **PID# 20580**
DIST 12 **02-23-00**

UNDERGROUND UTILITIES

TWO WORKING DAYS

BEFORE YOU DIG

CALL **1-800-362-2764** (TOLL FREE)

OHIO UTILITIES PROTECTION SERVICE
NON-MEMBERS
MUST BE CALLED DIRECTLY

PLAN PREPARED BY:
 ODOT - DISTRICT TWELVE
 PRODUCTION DEPARTMENT
 5500 TRANSPORTATION BLVD.
 GARFIELD HEIGHTS, OHIO 44125

PART NO.	BRIDGE NO.	STRUCTURAL FILE NO.	CITY
1	CUY-77-0523L	1806009	BROADVIEW HEIGHTS
2	CUY-77-0523R	1806033	BROADVIEW HEIGHTS
3	CUY-77-0570L	1806068	INDEPENDENCE
4	CUY-77-0570R	1806092	INDEPENDENCE
5	CUY-77-0645L	1806181	INDEPENDENCE
6	CUY-77-0645R	1806211	INDEPENDENCE
7	CUY-77-1322	1806572	CLEVELAND
8	CUY-77-1331	1806602	CLEVELAND
9	CUY-77-1518	1806785	CLEVELAND
10	CUY-77-1546	1806815	CLEVELAND
11	CUY-77-1562	1806874	CLEVELAND
12	CUY-90-1506	1807684	CLEVELAND
13	CUY-480-2438R	1813862	MAPLE HEIGHTS
14	CUY-480-2462	1813897	BEDFORD HEIGHTS
15	CUY-480N-0129R	1811088	WARRENSVILLE HEIGHTS

INDEX OF SHEETS:

TITLE	1
LOCATION MAP	2-3
GENERAL NOTES	4
GENERAL SUMMARY	5
BRIDGE DATA	6
MISCELLANEOUS PLAN	7
MAINTENANCE OF TRAFFIC	8-10

PATCHING PLAN - 2000


PATCH THE EXISTING BRIDGE DECKS WITH MICROSILICA. ADD FENCE AT STRUCTURE CUY-77-1322, ADD DRAIN HOLES AT STRUCTURE CUY-77-1331, AND REPLACE THE JOINT SEALS AT STRUCTURE CUY-480N-0129R.

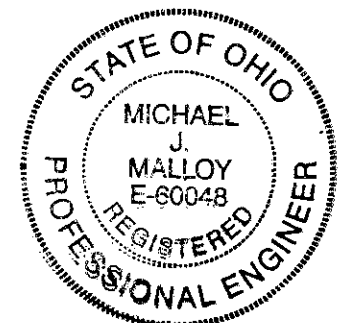
1997 SPECIFICATIONS

THE STANDARD SPECIFICATIONS OF THE STATE OF OHIO, DEPARTMENT OF TRANSPORTATION, INCLUDING CHANGES AND SUPPLEMENTAL SPECIFICATIONS LISTED IN THE PROPOSAL SHALL GOVERN THIS IMPROVEMENT.

I HEREBY APPROVE THESE PLANS AND DECLARE THAT THE MAKING OF THIS IMPROVEMENT WILL NOT REQUIRE THE CLOSING TO TRAFFIC OF THE HIGHWAY AND THAT PROVISIONS FOR THE MAINTENANCE AND SAFETY WILL BE AS SET FORTH ON PLANS AND ESTIMATES.

Approved: 
 Date: 12-6-99 District Deputy Director of Transportation

Approved: 
 Date: 9-3-99 Director, Department of Transportation



STANDARD CONSTRUCTION DRAWINGS				SUPPLEMENTAL SPECIFICATIONS	
VPF-1-90M	3/20/95	MT-95.30M	4/25/94	828	7/28/98
		MT-98.12M	6/24/93	842	1/6/99
MT-35.10M	1/30/95	MT-98.13M	6/24/93		
MT-35.11M	1/30/95	MT-98.14M	6/24/93		
MT-97.10M	4/25/94	MT-98.15M	6/24/93		
MT-105.10M	4/25/94	MT-98.16M	6/24/93		
MT-105.11M	4/25/94				
				SPECIAL PROVISIONS	

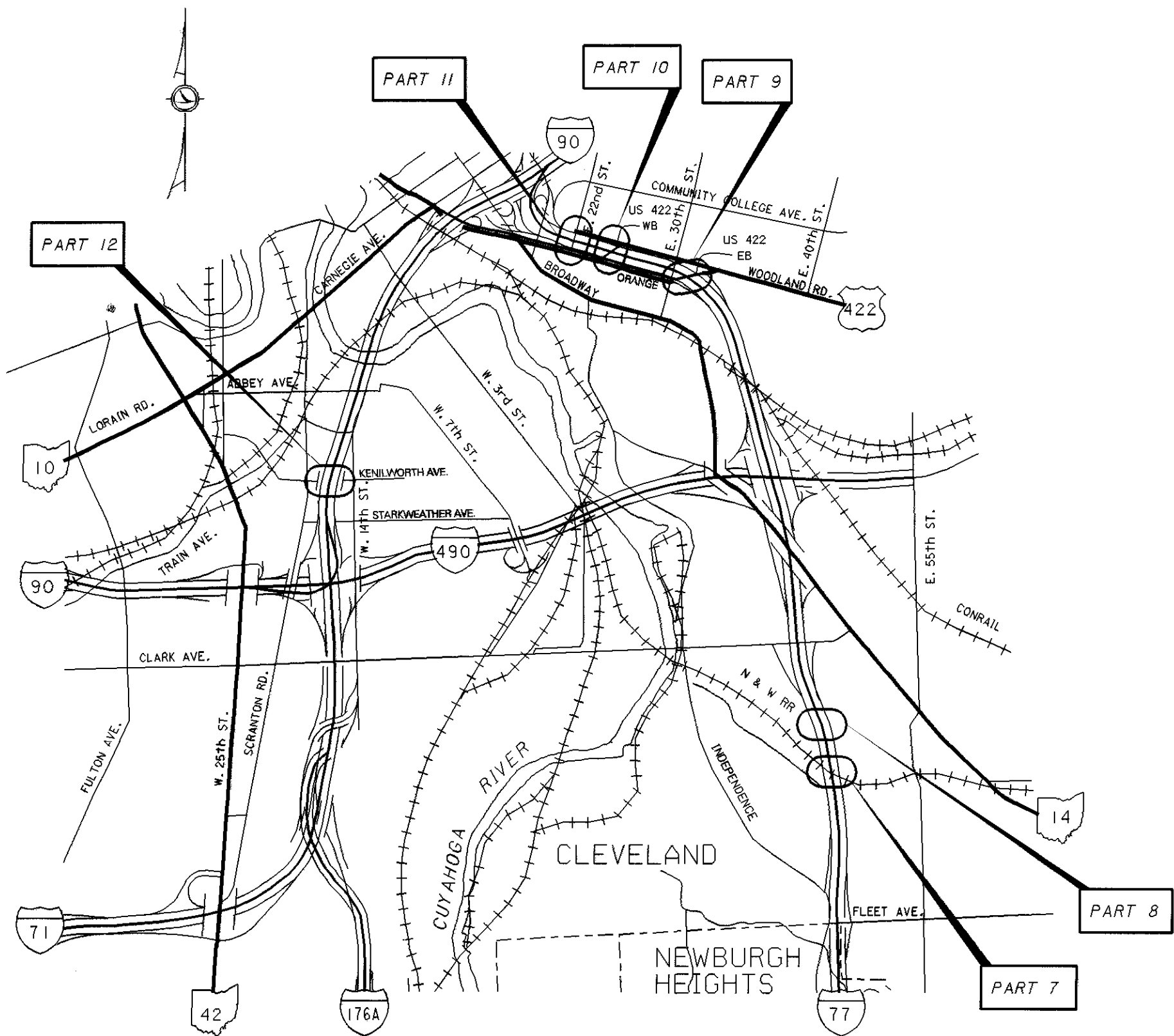
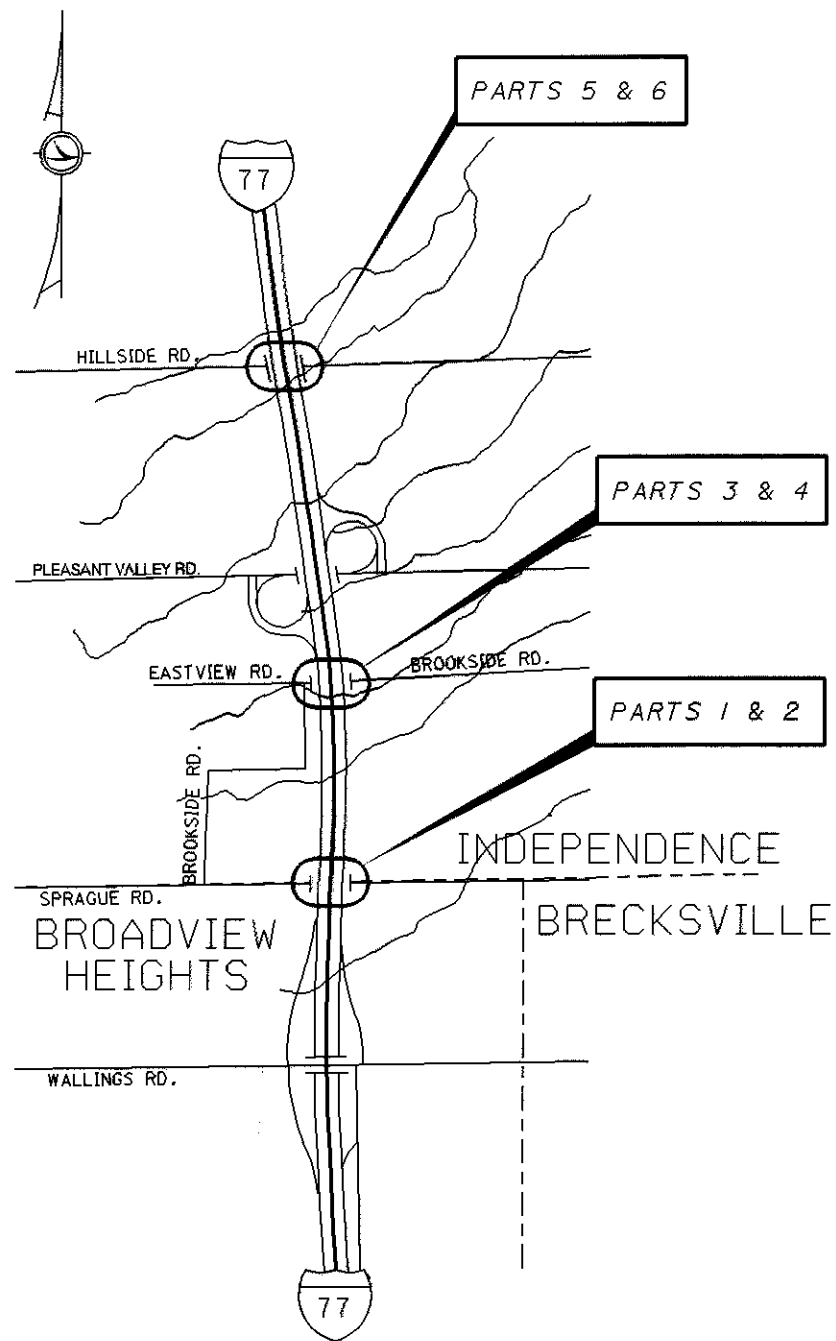
FEDERAL PROJECT NO. **100% STATE**

PID NO. **20580**

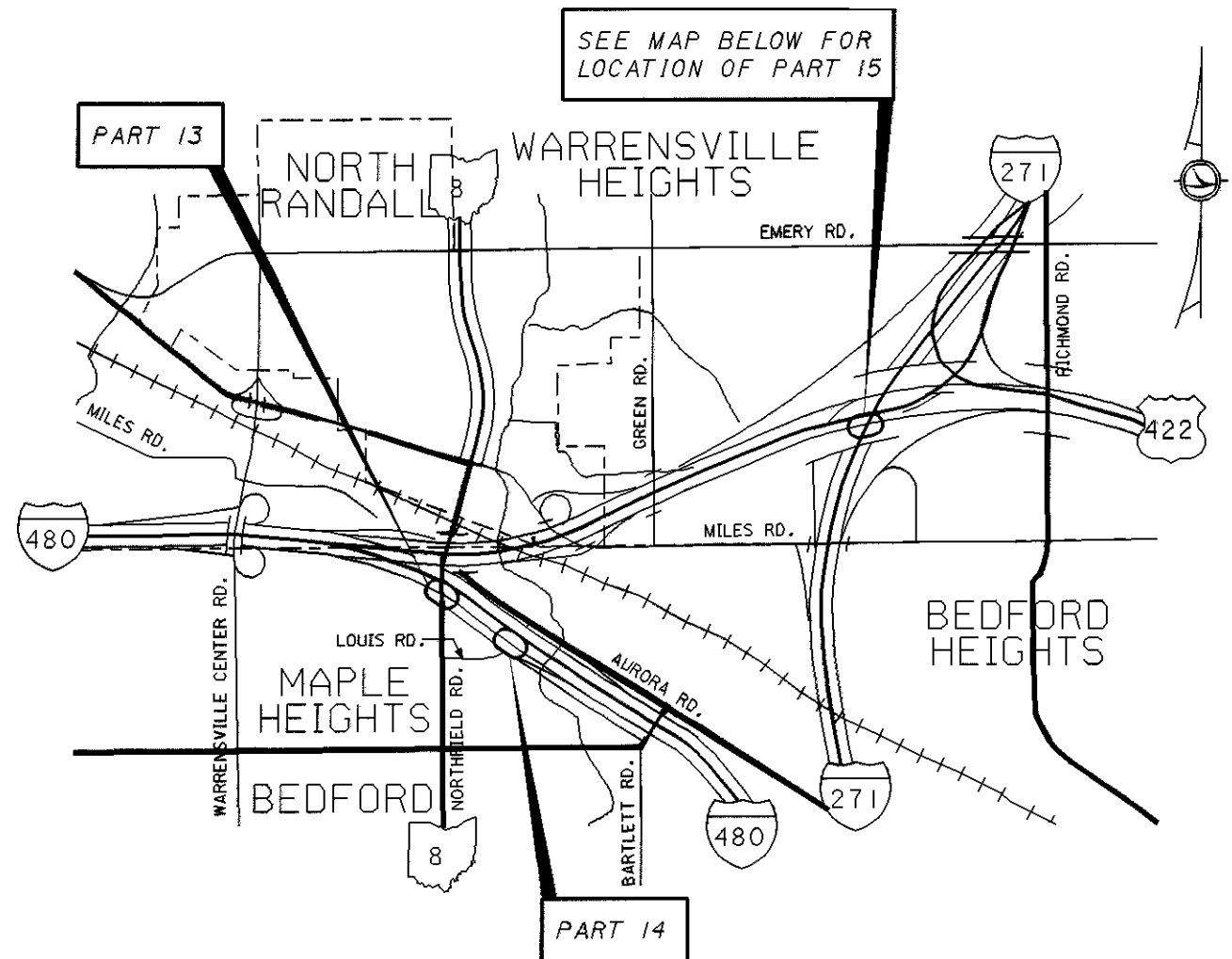
CONSTRUCTION PROJECT NO.

RAILROAD INVOLVEMENT

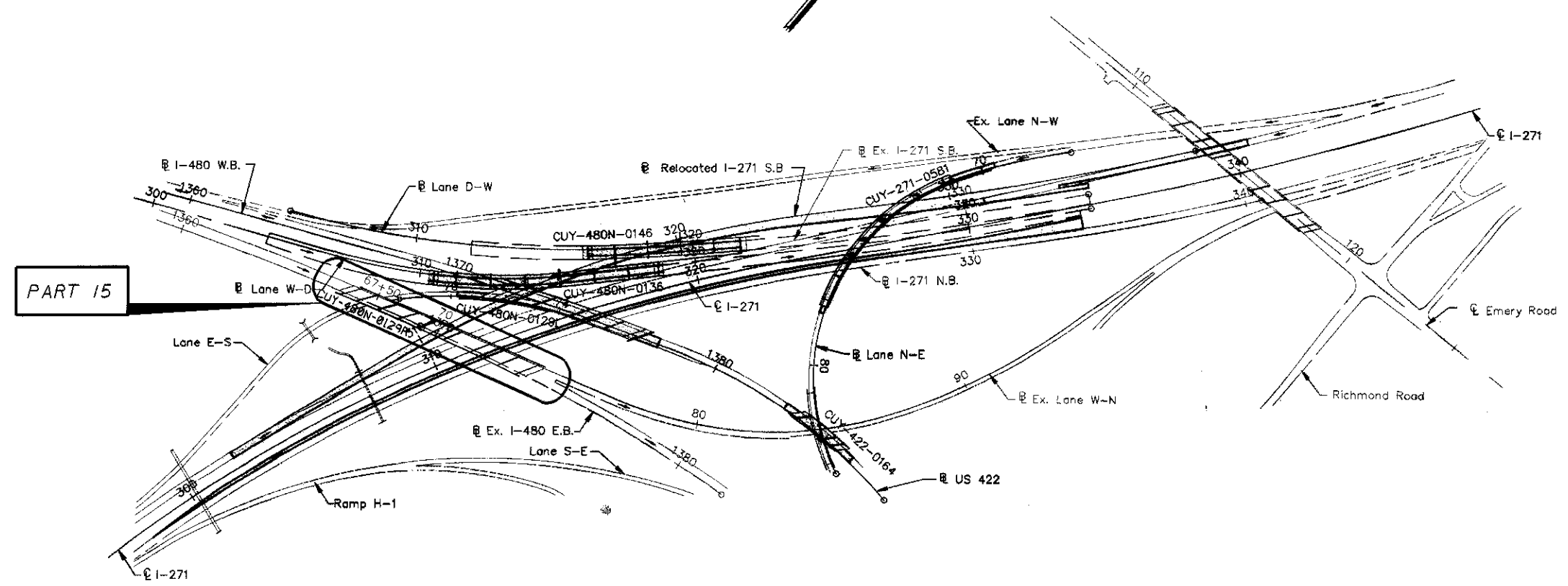
CUY-77-5.23/VAR



DESIGN AGENCY		DISTRICT TWELVE	
DATE		PRODUCTION DEPARTMENT	
REVIEWED	DATE	DATE	8/99
JWT	STRUCTURE FILE NUMBER		
DRAWN	NRC	REVISION	
NRC	REVISION		
CHECKED	MJM		
LOCATION MAP			
CUY-77-5.23/VAR			
1 / 2		2 / 10	



PART NO.	STRUCTURAL FILE NO.	BRIDGE NO.
1	1806009	CUY-77-0523L
2	1806033	CUY-77-0523R
3	1806068	CUY-77-0570L
4	1806092	CUY-77-0570R
5	1806181	CUY-77-0645L
6	1806211	CUY-77-0645R
7	1806572	CUY-77-1322
8	1806602	CUY-77-1331
9	1806785	CUY-77-1518
10	1806815	CUY-77-1546
11	1806874	CUY-77-1562
12	1807684	CUY-90-1506
13	1813862	CUY-480-2438R
14	1813897	CUY-480-2462
15	1811088	CUY-480N-0129R



PLOT SUBMITTED: 19-AUG-1999 14:33

gennote.dgn

PLOTTED BY: jgrmovse
PLOTTED FROM: @PROJECTS@p\d20580@gennote.dgn

REFERENCE SHALL BE MADE TO STANDARD DRAWINGS:
LISTED ON THE TITLE SHEET.

AND TO SUPPLEMENTAL SPECIFICATIONS:
LISTED ON THE TITLE SHEET.

AND TO PROPOSAL NOTES:
PATCHING CONCRETE BRIDGE DECK OVERLAYS WITH MICRO-SILICA
MODIFIED CONCRETE

CONVERSION OF METRIC STANDARD DRAWINGS:
THE METRIC STANDARD DRAWINGS REFERENCED IN THIS PLAN SHALL BE CONVERTED TO ENGLISH UNITS USING THE SI (METRIC) TO ENGLISH CONVERSION FACTORS PROVIDED IN SECTION 109.011 OF THE CMS. THE APPENDIX OF ASTM E 380 SHALL BE UTILIZED FOR ANY ADDITIONAL CONVERSION FACTORS REQUIRED. CONVERSIONS SHALL BE APPROXIMATELY PRECISE AND SHALL REFLECT STANDARD INDUSTRY ENGLISH VALUES WHERE SUITABLE.

EXISTING STRUCTURE VERIFICATION:
DETAILS AND DIMENSIONS SHOWN ON THESE PLANS PERTAINING TO THE EXISTING STRUCTURE HAVE BEEN OBTAINED FROM PLANS OF THE EXISTING STRUCTURE AND FROM FIELD OBSERVATIONS AND MEASUREMENTS. CONSEQUENTLY, THEY ARE INDICATIVE OF THE EXISTING STRUCTURE AND THE PROPOSED WORK BUT THEY SHALL BE CONSIDERED TENTATIVE AND APPROXIMATE. THE CONTRACTOR IS REFERRED TO C.M.S. SECTIONS 102.05 AND 105.02. THE ORIGINAL CONSTRUCTION PLANS OF THE EXISTING BRIDGE ARE AVAILABLE UPON REQUEST AT THE DISTRICT 12 OFFICE OF THE OHIO DEPARTMENT OF TRANSPORTATION, GARFIELD HEIGHTS, OHIO.

CONTRACT BID PRICES SHALL BE BASED UPON A RECOGNITION OF THE UNCERTAINTIES DESCRIBED ABOVE AND UPON A PRE-BID EXAMINATION OF THE EXISTING STRUCTURE BY THE CONTRACTOR. HOWEVER, ALL PROJECT WORK SHALL BE BASED ON ACTUAL DETAILS AND DIMENSIONS WHICH HAVE BEEN VERIFIED BY THE CONTRACTOR IN THE FIELD.

DESIGN SPECIFICATIONS:
THIS STRUCTURE CONFORMS TO "STANDARD SPECIFICATIONS FOR HIGHWAY BRIDGES" ADOPTED BY THE AMERICAN ASSOCIATION OF STATE HIGHWAY AND TRANSPORTATION OFFICIALS, 1996, INCLUDING THE 1997 INTERIM SPECIFICATIONS, AND THE ODOT BRIDGE DESIGN MANUAL.

PROPOSED WORK:
PATCH LOOSE AND BROKEN AREAS OF THE BRIDGE DECKS.
ON STRUCTURE CUY-77-1322, PLACE A FENCE ON THE RIGHT PARAPET.
ON STRUCTURE, CUY-77-1331, ADD DECK DRAIN HOLES.
ON STRUCTURE, CUY-480N-0129R, REPLACE ALL EXPANSION JOINT SEALS.
ALL PATCHING WORK SHOULD BE DONE ON WEEKENDS.

ITEM SPECIAL - STRUCTURE, MISC.: DRAIN HOLE:
THIS ITEM SHALL BE USED AT THE LOCATION INDICATED IN THE PLAN. CORE DRILL TWO (2) HOLES AS PER CMS 510.02, AND COAT THE DRILLED HOLE WITH NON-SHRINK, NON-METALLIC GROUT. INSERT A RIGID 4" - OUTER DIAMETER PIPE. SEE PLANS FOR ADDITIONAL DETAILS.

PAYMENT FOR ALL OF THE ABOVE SHALL BE AT THE UNIT PRICE BID PER EACH FOR ITEM SPECIAL - STRUCTURE, MISC.: DRAIN HOLE WHICH SHALL INCLUDE ALL LABOR, EQUIPMENT, MATERIALS, AND INCIDENTALS NECESSARY TO COMPLETE THE ABOVE WORK.

ITEM 848 - EDGE LINE:
ITEM 848 - LANE LINE:
A QUANTITY HAS BEEN SET UP IN THE GENERAL SUMMARY TO REPLACE PAVEMENT MARKINGS ON THE NEW PATCHES AS DIRECTED BY THE ENGINEER. ALL OR A PORTION OF THESE ITEMS ARE SUBJECT TO NON-PERFORMANCE BY THE ENGINEER. REFER TO SUPPLEMENTAL SPECIFICATION "EPOXY PAVEMENT MARKING" FOR ADDITIONAL DETAILS.

PAYMENT FOR ALL OF THE ABOVE SHALL BE AT THE UNIT PRICE BID PER MILE FOR THE ABOVE ITEMS WHICH SHALL INCLUDE ALL LABOR, EQUIPMENT, MATERIALS, AND INCIDENTALS NECESSARY TO COMPLETE THE ABOVE WORK.

ITEM SPECIAL - VANDAL PROTECTION FENCE, 6' STRAIGHT, COATED FABRIC:
THIS ITEM SHALL BE USED AT THE LOCATION INDICATED IN THE PLAN AS PER THE DETAILS IN THE PLAN.

PAYMENT FOR ALL OF THE ABOVE SHALL BE AT THE UNIT PRICE BID PER LINEAR FOOT FOR ITEM SPECIAL VANDAL PROTECTION FENCE, 6' STRAIGHT, COATED FABRIC WHICH SHALL INCLUDE ALL LABOR, EQUIPMENT, MATERIALS, AND INCIDENTALS NECESSARY TO COMPLETE THE ABOVE WORK.

ITEM 516 - ELASTOMERIC STRIP SEAL WITHOUT STEEL EXTRUSIONS, AS PER PLAN:
THIS ITEM SHALL BE USED AT THE LOCATIONS INDICATED IN THE PLAN AS PER THE DETAILS IN THE PLAN.

THIS ITEM SHALL INCLUDE ALL WORK REQUIRED TO REMOVE THE EXISTING NEOPRENE SEAL.

PAYMENT FOR ALL OF THE ABOVE SHALL BE AT THE UNIT PRICE BID PER LINEAR FOOT FOR ITEM 516 - ELASTOMERIC STRIP SEAL WITHOUT STEEL EXTRUSIONS, AS PER PLAN WHICH SHALL INCLUDE ALL LABOR, EQUIPMENT, MATERIALS, AND INCIDENTALS NECESSARY TO COMPLETE THE ABOVE WORK.

DESIGN AGENCY		DISTRICT TWELVE		PRODUCTION DEPARTMENT	
DATE	8/99	REVISED	JWT	STRUCTURE FILE NUMBER	SEE TITLE SHEET
DRAWN	NRC	REVIEWED			
DESIGNED	NRC	CHECKED	MJM		
GENERAL NOTES					
CUY-77-5.23/VAR					
1 / 1					
4 12					

PART NO. / BRIDGE NO.												ITEM	EXTENSION	PARTS 1 - 12 SUB-TOTAL	UNIT	DESCRIPTION	
1	2	3	4	5	6	7	8	9	10	11	12						
CUY-77-0523L	CUY-77-0523R	CUY-77-0570L	CUY-77-0570R	CUY-77-0645L	CUY-77-0645R	CUY-77-1322	CUY-77-1331	CUY-77-1518	CUY-77-1546	CUY-77-1562	CUY-90-1506						
													516	01301		LF	ELASTOMERIC STRIP SEAL WITHOUT STEEL EXTRUSIONS, AS PER PLAN
							2						SPECIAL	53000400	2	EA	STRUCTURE, MISC.: DRAIN HOLE
						105							SPECIAL	60739900	105	LF	VANDAL PROTECTION FENCE, 6' STRAIGHT, COATED FABRIC
													614	11100		HR	LAW ENFORCEMENT OFFICER WITH PATROL CAR
													828	10000		MI	EDGE LINE
													828	10100		MI	LANE LINE
33.9	83.3	17.4	48.7	3.2	4.4	14.0	49.3	107.1	158.2	2.8	700.0		SPECIAL	51912510	1222.3	SY	PATCHING CONCRETE BRIDGE DECK, OVERLAYS WITH MICRO-SILICA MODIFIED CONCRETE

PART NO. / BRIDGE NO.					PARTS 13 - 15, GENERAL AND CONTINGENCY SUB-TOTAL	PARTS 1 - 12 (FROM ABOVE) SUB-TOTAL	ITEM	EXTENSION	GRAND TOTAL	UNIT	DESCRIPTION
13	14	15	GENERAL	CONTINGENCY							
CUY-480-2438R	CUY-480-2462	CUY-480N-0129R									
		250			250		516	01301	250	LF	ELASTOMERIC STRIP SEAL WITHOUT STEEL EXTRUSIONS, AS PER PLAN
						2	SPECIAL	53000400	2	EA	STRUCTURE, MISC.: DRAIN HOLE
						105	SPECIAL	60739900	105	LF	VANDAL PROTECTION FENCE, 6' STRAIGHT, COATED FABRIC
			250				614	11100	250	HR	LAW ENFORCEMENT OFFICER WITH PATROL CAR
			0.10		0.10		828	10000	0.10	MI	EDGE LINE
			0.10		0.10		828	10100	0.10	MI	LANE LINE
66.7	59.9	573.1 *			699.7	1222.3	SPECIAL	51912510	1922	SY	PATCHING CONCRETE BRIDGE DECK, OVERLAYS WITH MICRO-SILICA MODIFIED CONCRETE
			LUMP				614	11000	LUMP		MAINTAINING TRAFFIC
			LUMP				624	10000	LUMP		MOBILIZATION

* SEE SHEET 7 FOR ADDITIONAL DETAILS

DESIGN AGENCY	DISTRICT TWELVE	PRODUCTION DEPARTMENT
DATE	8/99	
REVIEWED	JWT	STRUCTURE FILE NUMBER
DESIGNED	MFC	CHECKED
		MJM
GENERAL SUMMARY		
CUY-77-5.23/VAR		
1 / 1		
5 / 10		

PLOT SUBMITTED: 19-AUG-1999 14:35

bdata.dgn

PLOTTED BY: jgrmovse
 PLOTTED FROM: I:\PROJECTS\p1d20580\bbdata.dgn

PART NO.	STRUCTURAL FILE NO.	BRIDGE NO.	O/A LENGTH (FT)	ROADWAY WIDTH (FT)	SKEW	FEATURE INTERSECTED	WEARING SURFACE TYPE	NUMBER OF LANES	MAJORITY OF PATCHES IN LANE NO.	MAINTENANCE OF TRAFFIC - LANE CLOSURES SHALL NOT BE PERMITTED	MOT SCHEME
1	1806009	CUY-77-0523L	156	38.0	2°	OVER CR-67 (SPRAGUE RD.)	LATEX MODIFIED CONCRETE	SB 2	2	1 LANE CLOSURE: WEEKDAYS 6am-9am, 3pm-7pm	A
3	1806068	CUY-77-0570L	130	62.9	4°	OVER CR-157 (BROOKSIDE RD.)	LATEX MODIFIED CONCRETE	SB 3	2, 3	1 LANE CLOSURE: WEEKDAYS 6am-9am, 3pm-7pm	
5	1806181	CUY-77-0645L	157	51.0	7°	OVER CR-145 (HILLSIDE RD.)	LATEX MODIFIED CONCRETE	SB 3	3	1 LANE CLOSURE: WEEKDAYS 3pm-6pm 2 LANE CLOSURE: WEEKDAYS 6am-11pm WEEKENDS 8am-12 MIDNIGHT SAT, 10am-11pm SUN	
2	1806033	CUY-77-0523R	156	38.0	0°	OVER CR-67 (SPRAGUE RD.)	LATEX MODIFIED CONCRETE	NB 2	2	1 LANE CLOSURE: WEEKDAYS 3pm-6pm	B
4	1806092	CUY-77-0570R	130	38.0	4°	OVER CR-157 (BROOKSIDE RD.)	LATEX MODIFIED CONCRETE	NB 2	1, 2	1 LANE CLOSURE: WEEKDAYS 3pm-6pm	
6	1806211	CUY-77-0645R	157	51.0	7°	OVER CR-145 (HILLSIDE RD.)	LATEX MODIFIED CONCRETE	NB 3	2	1 LANE CLOSURE: WEEKDAYS 6am-9am 2 LANE CLOSURE: WEEKDAYS 6am-11pm WEEKENDS 8am-12 MIDNIGHT SAT, 10am-11pm SUN	●
7	1806572	CUY-77-1322 ★	73	102.5	39°	OVER N&W RR	INTEGRAL CONCRETE	NB 3 SB 3	NB 1, 2, 3 SB 1, 2, 3	1 LANE CLOSURE: WEEKDAYS 6am-7pm 2 LANE CLOSURE: WEEKDAYS 5am-11pm (NB), 6am-11pm (SB) WEEKENDS 9am-12 MIDNIGHT SAT, 11am-11pm SUN	●
8	1806602	CUY-77-1331 ★	106	101.0	0°	OVER INDUSTRIAL DR.	MICROSILICA MODIFIED CONCRETE	NB 3 SB 3	NB 1, 2, 3 SB 2, 3	1 LANE CLOSURE: WEEKDAYS 6am-7pm 2 LANE CLOSURE: WEEKDAYS 5am-11pm (NB), 6am-11pm (SB) WEEKENDS 9am-12 MIDNIGHT SAT, 11am-11pm SUN	●
9	1806785	CUY-77-1518	522	94.0	51° & 12°	OVER CUY-422-1.55 (US-422 EB)	DENSE CONCRETE	NB 3 SB 3	NB 1, 2, 3 SB 1, 2, 3	1 LANE CLOSURE: WEEKDAYS 6am-10am, 3pm-7pm 2 LANE CLOSURE: WEEKDAYS 6am-9pm WEEKENDS 10am-12 MIDNIGHT SAT, 11am-10pm SUN	●
10	1806815	CUY-77-1546	214	112.0	56°	OVER CUY-422-1.25 (US-422 WB)	DENSE CONCRETE	NB 3 SB 3	NB 1, 2, 3 SB 1, 2, 3	1 LANE CLOSURE: WEEKDAYS 6am-10am, 3pm-7pm 2 LANE CLOSURE: WEEKDAYS 6am-9pm WEEKENDS 10am-12 MIDNIGHT SAT, 11am-10pm SUN	●
11	1806874	CUY-77-1562	210	110.3	0°	OVER E. 22nd ST.	LATEX MODIFIED CONCRETE	NB 3 SB 3	NB 1 SB NO PATCH	1 LANE CLOSURE: WEEKDAYS 6am-10am, 3pm-7pm 2 LANE CLOSURE: WEEKDAYS 6am-9pm WEEKENDS 10am-12 MIDNIGHT SAT, 11am-10pm SUN	
12	1807684	CUY-90-1506	170	135.0	12°	OVER KENILWORTH AVE.	DENSE CONCRETE	NB 4 SB 5	NB NO PATCH SB 1, 2, 3	1 LANE CLOSURE: WEEKDAYS 6am-7pm 2 LANE CLOSURE: WEEKDAYS 6am-10pm WEEKENDS 12 NOON-12 MIDNIGHT SAT, 12 NOON-10pm SUN	●
13	1813862	CUY-480-2438R	199	39.0	31°	OVER CUY-8-0506 (NORTHFIELD RD.)	LATEX MODIFIED CONCRETE	EB 2	2	1 LANE CLOSURE: WEEKDAYS 3pm-7pm	F
14	1813897	CUY-480-2462	111	87.0	1°	OVER LOUIS RD.	LATEX MODIFIED CONCRETE	EB 2 WB 2	EB 2 WB 2	1 LANE CLOSURE: WEEKDAYS 6am-10am (WB), 3pm-7pm (EB)	
15	1811088	CUY-480N-0129R ★	698	53.0	51° & 42°	OVER CUY-271-5.56	INTEGRAL CONCRETE	VARIES 3 - 4	VARIES 2, 3 - 1, 2, 3, 4	1 LANE CLOSURE: WEEKDAYS 6am-9am, 3pm-9pm WEEKENDS 11am SAT-9pm SAT, 12 NOON SUN-9pm SUN 2 LANE CLOSURE: WEEKDAYS 6am-11pm WEEKENDS 9am-12 MIDNIGHT SAT, 11am-11pm SUN	●

★ SEE PLANS FOR ADDITIONAL WORK OTHER THAN PATCHING

● WEEKEND CLOSURES WILL BE PERMITTED WITH PERMISSION FROM THE DISTRICT WORK ZONE TRAFFIC CONTROL ENGINEER. THE DISTRICT WORK ZONE TRAFFIC CONTROL ENGINEER WILL GIVE PERMISSION, SEE ADDITIONAL NOTES IN THE PLAN. A PORTABLE CHANGEABLE MESSAGE SIGN (PCMS) IS REQUIRED FOR 2 LANE CLOSURES.

MOT SCHEME:

WEEKEND CLOSURES SHALL ACCOMODATE:
 A - SIMULTANEOUS WORK ON PARTS 1, 3 & 5.
 B - SIMULTANEOUS WORK ON PARTS 2, 4 & 6.
 C - SIMULTANEOUS WORK ON PARTS 7 & 8.
 D - SIMULTANEOUS WORK ON PARTS 9, 10 & 11.
 F - SIMULTANEOUS WORK ON PART 13 & 14.
 WORK ON PARTS 12 (SCHEME E) & 15 (SCHEME G) MAY BE COMPLETED SEPARATELY.

DESIGN AGENCY
 DISTRICT TWELVE
 PRODUCTION DEPARTMENT

DATE
 8/99
 REVIEWED
 JMT
 STRUCTURE FILE NUMBER

DRAWN
 NRC
 REVISION
 CHECKED
 WJM

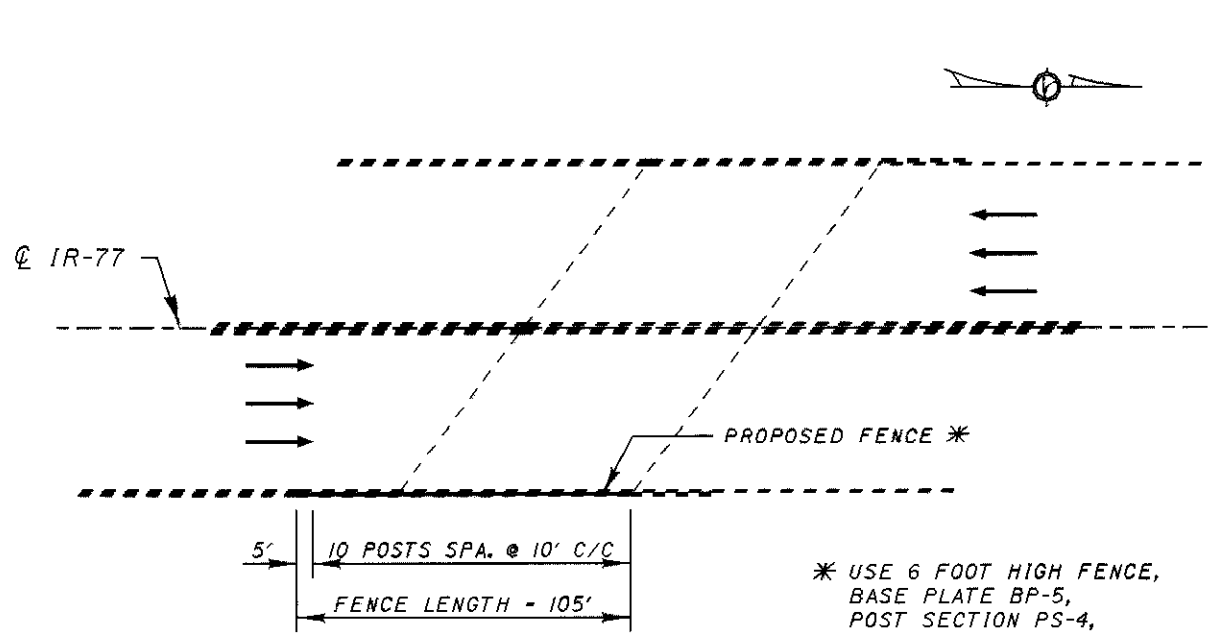
BRIDGE DATA

CUY-77-5.23/VAR

PLOT SUBMITTED: 19-AUG-1999 14:36

mi sc. dgn

PLOTTED BY: jgrmovse
PLOTTED FROM: I:\PROJECTS\p1d20580\mi sc. dgn

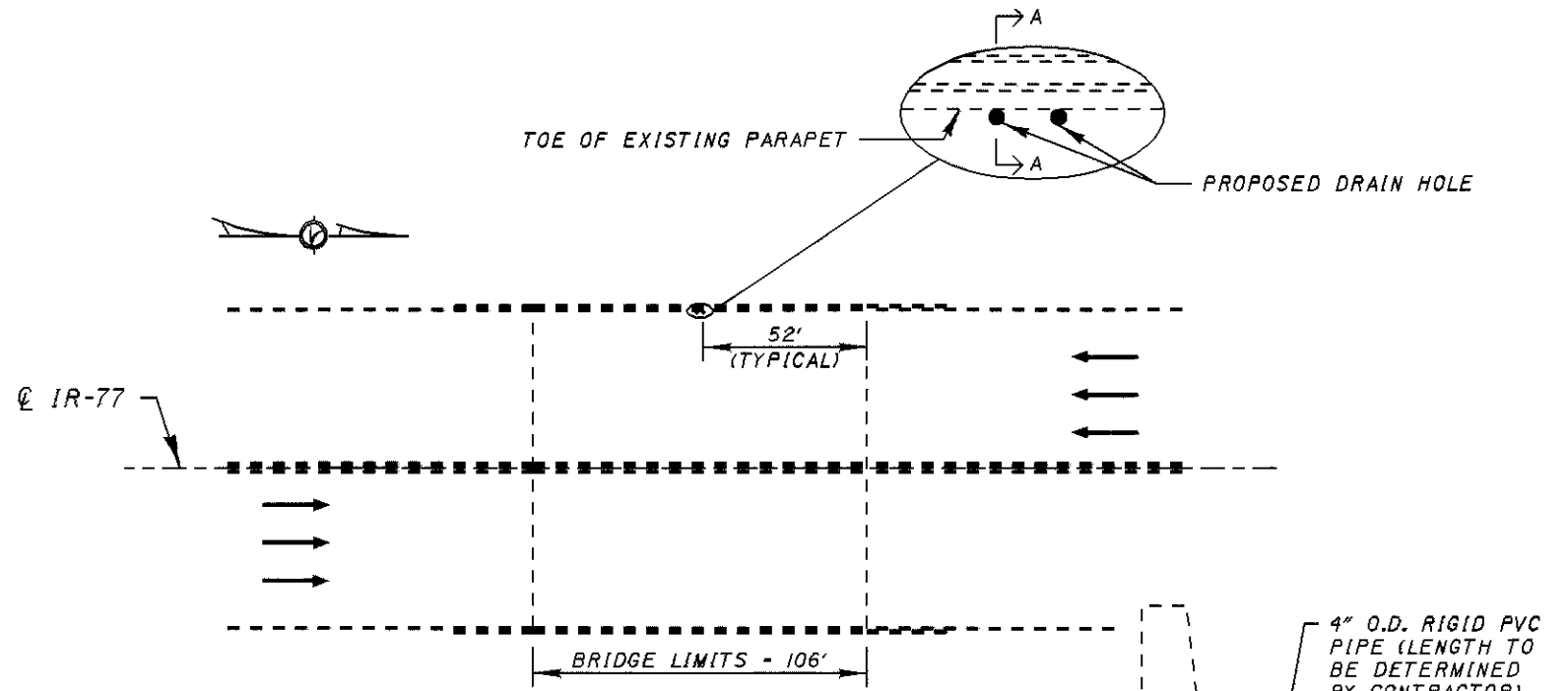


PLAN VIEW

CUY-77-1322
SFN: 1806572

WORK REQUIRED: PLACE FENCE ON RIGHT PARAPET

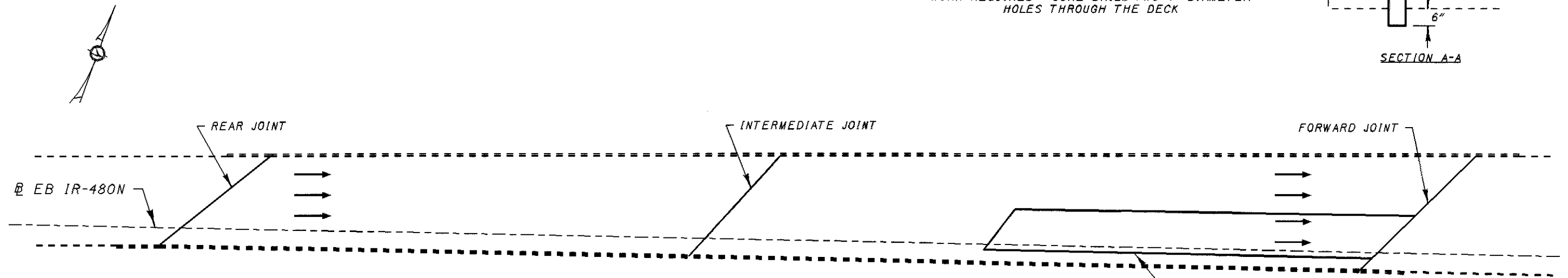
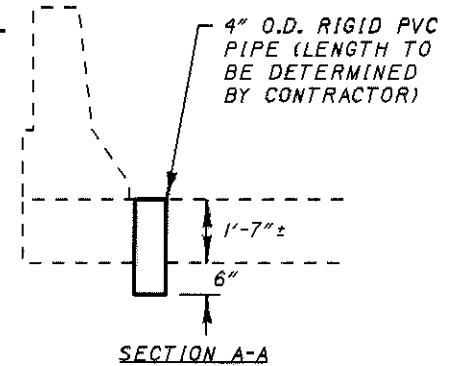
* USE 6 FOOT HIGH FENCE,
BASE PLATE BP-5,
POST SECTION PS-4,
AND POST SLEEVES
REFER TO STANDARD DRAWING
VPF-I-90M FOR DETAILS



PLAN VIEW

CUY-77-1331
SFN: 1806602

WORK REQUIRED: CORE DRILL TWO 4" DIAMETER
HOLES THROUGH THE DECK



PATCH APPROXIMATELY
200' LONG X 25' WIDE

PLAN VIEW

CUY-480N-0129R
SFN: 1811088

WORK REQUIRED: REPLACE ALL EXPANSION JOINT SEALS

PROPOSED NEOPRENE GLAND



EXISTING
STEEL
RETAINERS

JOINT LOCATION	SKEW	JOINT LENGTH	SEAL SIZE
REAR	51°26'	82'	4"
INTERMEDIATE	42°27'	72'	5"
FORWARD	45°33'	93'	5"

NOTE: THE CONTRACTOR SHALL REPLACE THE EXISTING STRIP SEAL (NEOPRENE GLAND) WITH AN IDENTICAL STRIP SEAL AS PER MANUFACTURER'S SPECIFICATIONS AND RECOMMENDATIONS. ALL LABOR, EQUIPMENT, MATERIALS AND INCIDENTALS NECESSARY TO COMPLETE THE ABOVE WORK SHALL BE INCIDENTAL TO ITEM 516 - ELASTOMERIC STRIP SEAL WITHOUT STEEL EXTRUSIONS, AS PER PLAN.

THIS TABLE WAS TAKEN FROM THE ORIGINAL PLANS. ONE OF THESE MANUFACTURERS SHOULD HAVE THE EXISTING SEAL.

SEAL MOVEMENT RATING	MANUFACTURER & DESIGNATION		
	D.S. BROWN	STRUCTURAL ACCESSORIES	WATSON BOWMAN & ACME
4"	SS400	40 SD	SE-400
5"	SS500	50 SS	SE-500
WELD ON RETAINER	TYPE SSE	TYPE SA	TYPE E

DESIGN AGENCY: DISTRICT TWELVE
PRODUCTION DEPARTMENT
DATE: 8/99
REVIEWED: JMT
STRUCTURE FILE NUMBER: SEE PLAN VIEW
DESIGNED: NRC
CHECKED: M/JM
MISCELLANEOUS PLAN
BRIDGE NOS. CUY-77-1322, CUY-77-1331 & CUY-480N-0129R
CUY-77-5.23/VAR

ITEM 614 - MAINTAINING TRAFFIC:

AT ALL LOCATIONS:

MAINTENANCE OF TRAFFIC SYSTEMS

GENERAL

GENERALLY THE CONTRACTOR SHALL CONDUCT HIS OPERATIONS AS TO MAKE THE PROPOSED REPAIR WITH A MINIMUM OF HAZARD, DELAY AND INCONVENIENCE TO THE MOTORISTS USING THE HIGHWAY. FURTHERMORE, IN ADDITION TO THE CONSTRUCTION AND MATERIAL SPECIFICATIONS, THE FOLLOWING SPECIFIC PROVISIONS ARE MANDATORY.

DURING NON-WORKING HOURS, ALL LANES SHALL BE IN FULL OPERATION WITH ALL TRAFFIC CONTROL SIGNS, EXCEPT 0W-124 ROAD CONSTRUCTION AHEAD SIGNS, REMOVED OR COVERED AND ALL CHANNELIZING DEVICES REMOVED FROM THE PAVEMENT SURFACES. CHANNELIZING DEVICES MAY BE STORED OR DEPLOYED TEMPORARILY ADJACENT TO THE SHOULDER TO MINIMIZE THE NIGHTLY TRAFFIC CONTROL SETUP TIME.

A. WHEN REQUIRED

WHENEVER ANY PART OF THE TRAVELED SURFACE IS BEING WORKED UPON OR IS OTHERWISE NOT SUITABLE FOR SAFE AND CONVENIENT USE BY VEHICLES, TRAFFIC CONTROL DEVICES SUFFICIENT TO PROTECT SUCH AREAS TO ASSURE THE SAFE AND CONVENIENT PASSAGE OF VEHICULAR TRAFFIC SHALL BE INSTALLED AND MAINTAINED. SUCH TRAFFIC CONTROL DEVICES AND THE MANNER IN WHICH THEY ARE USED SHALL BE CONSISTENT WITH THESE PLANS AND THE OHIO MANUAL OF UNIFORM TRAFFIC CONTROL DEVICES FOR STREETS AND HIGHWAYS (HEREINAFTER REFERRED TO AS THE "MANUAL"). THE TRAFFIC CONTROL DEVICE SYSTEM SHALL CONSTITUTE THE MINIMUM PROVISIONS FOR TRAFFIC CONTROL FOR EACH PARTICULAR SITUATION. WHENEVER THE ENGINEER DEEMS IT NECESSARY ESPECIALLY WHERE A GRADE, CURVE, OR MERGE CONDITIONS EXIST, HE MAY DIRECT THAT ADDITIONAL OR ALTERNATIVE DEVICES BE USED.

NOTIFICATION

SINCE FUNCTIONAL TRAFFIC CONTROL IS A MAJOR CONCERN ON THIS PROJECT, IT IS ESSENTIAL THAT THE MOTORING PUBLIC BE ADEQUATELY FOREWARNED ON FUTURE LANE CLOSURES AND TRAFFIC CONSTRUCTIONS. THEREFORE, THE CONTRACTOR SHALL SUBMIT A SCHEDULE TO THE OHIO DEPARTMENT OF TRANSPORTATION INDICATING THE LOCATIONS AND DATES OF THE LANE CLOSURES AT LEAST THREE (3) DAYS PRIOR TO THE IMPLEMENTATION OF ANY SUCH CLOSURES. THE CONTRACTOR SHALL ALSO NOTIFY THE LOCAL LAW ENFORCEMENT AGENCIES OF LANE CLOSURES AT LEAST THREE (3) DAYS PRIOR TO IMPLEMENTATION.

NO THREE (3) LANE CLOSURES ARE PERMITTED.

EXIT AND ENTRANCE RAMPS SHALL REMAIN OPEN AT ALL TIMES AND EXHIBIT A MINIMUM LANE WIDTH OF TEN (10) FEET.

CONSTRUCTION EQUIPMENT, PRIVATE VEHICLES AND MATERIALS SHALL NOT BE PARKED OR STORED ON THE ROADWAY ADJACENT TO THE ROADWAY WITHIN THE 30' CLEAR ZONE OF THE TRAVELED LANES.

B. CONDITIONS

DURING ALL PARTS OF THIS PROJECT, SIGNING, BARRICADES, FLASHING AROWS, ETC. SHALL BE LOCATED AS INDICATED IN THE MANUAL, AS SHOWN ON THE MAINTENANCE OF TRAFFIC SHEETS OR AS SHOWN ON STANDARD DRAWING MT-97.10M AND MT-95.30M.

RESTRICTIONS

SEE RESTRICTED LANE CLOSURES ON THE BRIDGE DATA SHEET.

FOLLOW STANDARD DRAWING MT-95.30M FOR MOST LOCATIONS. SINCE THE CLOSURE ZONE WILL BE IN PLACE OVER A WEEKEND, THE CONTRACTOR SHALL NOT REMOVE CONFLICTING PAVEMENT MARKINGS AND RAISED PAVEMENT MARKERS. TEMPORARY PAVEMENT MARKINGS SHALL NOT BE USED. OC-8 SIGNS MAY BE OMITTED.

C. ADVANCE WARNING SIGNS

ALL ADVANCE WARNING SIGNS FOR ANY CONDITION WHICH RESTRICTS TRAFFIC SHALL BE ERECTED BEFORE ANY SUCH RESTRICTION IS PUT INTO EFFECT. ALL SUCH SIGNS SHALL BE COVERED OR REMOVED FROM THE VIEW OF TRAFFIC WHENEVER THEY ARE NOT APPLICABLE.

FOR STRUCTURES CUY-77-0645R, CUY-77-1322, CUY-77-1331, CUY-77-1518 AND CUY-77-1546:

IF, IN THE OPINION OF THE ENGINEER, THE CONTRACTOR FAILS TO COMPLY WITH THESE REQUIREMENTS OR THE PROVISIONS OF THE APPROVED MAINTENANCE OF TRAFFIC PLAN, THE ENGINEER SHALL SUSPEND WORK UNTIL ALL REQUIREMENTS ARE COMPLIED WITH. ANY COSTS OR DELAYS INCURRED AS A RESULT OF THE FAILURE SHALL BE THE FULL RESPONSIBILITY OF THE CONTRACTOR.

D. FLASHING ARROW REQUIREMENT

FLASHING ARROWS SHALL BE FURNISHED AS SHOWN ON THE MAINTENANCE OF TRAFFIC PLANS OR ON STANDARD DRAWING MT-95.30M.

TWO (2) LANE WEEKEND CLOSURES WILL BE PERMITTED FROM 7pm FRI - 5am MON WITH THE APPROVAL OF THE DISTRICT WORK ZONE TRAFFIC CONTROL ENGINEER AND THE PROJECT ENGINEER. THE CONTRACTOR SHALL PROVIDE A SEQUENCE OF CLOSURES FOR APPROVAL BEFORE BEGINNING WORK AT THAT LOCATION. THE SEQUENCE SHALL INDICATE WHICH LANE(S) WILL BE CLOSED AND IF SIMULTANEOUS WORK WILL TAKE PLACE.

NOTWITHSTANDING THE ABOVE, NO LANE OR SHOULDER CLOSURES SHALL OCCUR DURING THE PERIOD BEGINNING AT 12:00 NOON ON THE DAY PRECEDING AND CONTINUING UNTIL NOON ON THE DAY FOLLOWING LEGAL HOLIDAYS AND HOLIDAY WEEKENDS SUCH AS MEMORIAL DAY, FOURTH OF JULY, AND LABOR DAY.

E. PROTECTION OF PUBLIC

WHENEVER ANY WORK IS BEING DONE OVER A TRAVELED LANE OR SHOULDER, THE CONTRACTOR SHALL SUPPLY SUFFICIENT SAFETY EQUIPMENT AS APPROVED BY THE DIRECTOR TO PROTECT THE TRAVELING PUBLIC FROM ANY CONSTRUCTION DEBRIS. IF TRAVELED LANES UNDER STRUCTURES ARE TO BE CLOSED FOR REASONS OF SAFETY, METHOD AND TIME OF CLOSURE MUST BE APPROVED PRIOR TO IMPLEMENTATION. PERSONAL CARS SHALL NOT BE PARKED WITHIN THE L/A.

FOR STRUCTURES CUY-90-1506 AND CUY-480N-0129R:

NO LANE CLOSURES SHALL BE IMPLEMENTED OR IN PLACE DURING INCREASED TRAFFIC VOLUMES CAUSED BY SPECIAL EVENTS WITH A SEATING CAPACITY OVER 40,000, OR WHEN THE ENGINEER DEEMS THE CLIMATOLOGICAL CONDITIONS TOO HAZARDOUS.

F. FLAGGERS

FLAGGERS SHALL BE IN ACCORDANCE WITH MT-97.10M. THE MAINTENANCE OF TRAFFIC PLANS REQUIRE THE USE OF TWO (2) FLAGGERS. ADDITIONAL FLAGGERS SHALL BE USED AS DIRECTED BY THE ENGINEER.

THE CONTRACTOR SHALL DEVISE A SIMPLE MAINTENANCE OF TRAFFIC SCHEME (AND HAND SKETCH) AND PRESENT IT TO THE DISTRICT WORK ZONE TRAFFIC CONTROL ENGINEER AND PROJECT ENGINEER FOR APPROVAL BEFORE BEGINNING WORK AT THAT LOCATION. THE MAINTENANCE OF TRAFFIC SCHEME SHALL PRESENT, IN GENERAL, THE METHODS FOR MAINTAINING TRAFFIC THAT THE CONTRACTOR PROPOSES TO USE FOR CONDUCTING THE REQUIRED WORK IN A SAFE AND EFFICIENT MANNER, SUPPORTED BY HAND SKETCHES AS NECESSARY. THE MAINTENANCE OF TRAFFIC PLAN SHALL BE IN CONFORMANCE WITH THE OHIO MANUAL OF UNIFORM TRAFFIC CONTROL DEVICES, LATEST REVISION, THE REFERENCED STANDARD CONSTRUCTION DRAWINGS, THE ATTACHED MAINTENANCE OF TRAFFIC SHEETS, THE BRIDGE DATA SHEET AND THE SPECIFICATIONS. THE CONTRACTOR SHALL NOT COMMENCE WORK UNTIL THE MAINTENANCE OF TRAFFIC PLAN HAS BEEN APPROVED.

PAYMENT FOR ALL THE ITEMS REQUIRED TO MAINTAIN TRAFFIC IN ACCORDANCE WITH THESE REQUIREMENTS SHALL BE INCLUDED IN THE LUMP SUM PRICE BID FOR ITEM 614 - MAINTAINING TRAFFIC.

G. LAW ENFORCEMENT OFFICER WITH PATROL CAR

THE CONTRACTOR SHALL PROVIDE AND PAY ALL COST FOR THE SERVICES OF LAW ENFORCEMENT OFFICER WITH PATROL CAR FOR THE EXCLUSIVE PURPOSE OF CONTROLLING TRAFFIC AS DETERMINED BY THE ENGINEER. THE NUMBER OF OFFICERS AND CARS REQUIRED FOR THIS PURPOSE SHALL BE DETERMINED BY THE CONTRACTOR AND APPROVED BY THE ENGINEER. THE OFFICERS SHALL MOVE THEIR PATROL CARS AS NECESSARY TO INSURE THEIR CONSTANT PRESENCE AT THE POINT(S) OF SLOWDOWN, STOPPAGE OR BACK-UP. IT SHALL BE THE RESPONSIBILITY OF THE CONTRACTOR TO MAKE ARRANGEMENTS FOR SCHEDULING AND PAYMENT OF LAW ENFORCEMENT OFFICER WITH PATROL CAR.

ALL WORK SHALL BE CONDUCTED FROM WITHIN A ONE OR TWO (1 OR 2) LANE CLOSURE USING DRUMS (42" TALL NIGHT CONES ARE PERMITTED ON THE STRUCTURES ONLY), ACCORDING TO THE BRIDGE DATA SHEET, RESTRICTIONS AND THE CONCEPTS PRESENTED IN MT-95.30M AND ASSOCIATED STANDARD CONSTRUCTION DRAWINGS, MT-98.12M THRU MT-98.16M (SEE LIST ON TITLE SHEET). A MINIMUM OF ONE 12' LANE IN EACH DIRECTION SHALL BE OPEN TO TRAFFIC AT ALL TIMES DURING THE HOURS PERMITTED.

IF, DURING THE PROJECT, THE ENGINEER DETERMINES THAT THE APPROVED MAINTENANCE OF TRAFFIC PLAN IS NOT PERFORMING AS DESIRED, THE WORK SHALL BE SUSPENDED UNTIL THE PROBLEMS ARE RESOLVED TO THE SATISFACTION OF THE ENGINEER AND THE MAINTENANCE OF TRAFFIC PLAN IS REVISED ACCORDINGLY. ANY COSTS OR DELAYS INCURRED AS A RESULT OF THE FAILURE OF THE APPROVED MAINTENANCE OF TRAFFIC PLAN TO PERFORM TO THE SATISFACTION OF THE ENGINEER SHALL BE THE FULL RESPONSIBILITY OF THE CONTRACTOR.

PAYMENT FOR ALL OF THE ABOVE SHALL BE INCLUDED IN THE MAN HOUR PRICE BID FOR ITEM 614 - LAW ENFORCEMENT OFFICER WITH PATROL CAR.

PLOT SUBMITTED: 19-AUG-1999 14:37

mot.dgn

PLOTTED BY: jgrmoyses
PLOTTED FROM: I:\PROJECTS\Bpi d20580\Bmp1.dgn

MAINTENANCE OF TRAFFIC NOTES

CUY-77-5.23/AR

H. WORKSITE TRAFFIC SUPERVISOR

THE CONTRACTOR SHALL EMPLOY (OTHER THAN THE SUPERINTENDENT) AND SUBJECT TO THE APPROVAL OF THE ENGINEER, A CERTIFIED WORKSITE TRAFFIC SUPERVISOR (WTS). THE WTS MAY BE CERTIFIED FROM ONE OF THE FOLLOWING ORGANIZATIONS:

- 1) AMERICAN TRAFFIC SAFETY SERVICE ASSOCIATION A.T.S.S.A. PHONE NUMBER 1-800-272-8772) CERTIFIED WORKSITE TRAFFIC SUPERVISOR (WTS)
- 2) THE NATIONAL SAFETY COUNCIL, TRAFFIC CONTROL ZONES SUPERVISORS COURSE, PHONE NO. 1-800-441-5103
- 3) NATIONAL HIGHWAY INSTITUTE, DESIGN AND OPERATION OF WORK ZONE TRAFFIC CONTROL, PHONE NO. 1-703-235-0528

THE WTS POSITION IS ESTABLISHED FOR THE PURPOSE OF MONITORING AND CORRECTING ANY TRAFFIC CONTROL DEFICIENCIES IN THE WORK ZONE. THE WTS SHALL OVERSEE ALL OPERATIONS THAT AFFECT THE MOVEMENT OF VEHICULAR AND PEDESTRIAN TRAFFIC THROUGH THE WORK ZONE.

THE WTS SHALL BE PRESENT WHEN THE CONTRACTOR OR SUBCONTRACTOR INSTALLS A TRAFFIC RESTRICTION, LANE CLOSURE, ETC. IN LIEU OF THE WTS BEING PRESENT WHEN A SUBCONTRACTOR HAS A WORKZONE IN PLACE, THE CONTRACTOR MAY USE HIS OWN PERSONNEL THAT IS A CERTIFIED WTS. THE CONTRACTOR OR SUBCONTRACTOR MUST PRESENT A COPY OF HIS WTS CERTIFICATE TO THE PROJECT ENGINEER. A WTS MUST BE PRESENT WHEN THE WORK ZONE IS BEING SET UP. HE MUST APPROVE THE WORK ZONE BEFORE HE LEAVES OR PERFORMS OTHER DUTIES.

THE RESTRICTIONS ARE SHORT TERM, THE WTS SHALL MONITOR THE ZONE FOR COMPLIANCE. DURING THE LANE CLOSURE HE SHALL MAKE SURE ALL TRAFFIC CONTROL ITEMS ARE FUNCTIONING PROPERLY. TRAFFIC CONTROL WILL BE THE WTS' MAIN DUTY DURING IMPLEMENTATION OF ZONES OR SHORT TERM ZONES. THE WTS SHALL HAVE THE AUTHORITY TO HAVE DEFICIENCIES CORRECTED AS SOON AS POSSIBLE. THE WTS SHALL PROVIDE THE DISTRICT WORK ZONE TRAFFIC CONTROL ENGINEER A SKETCH OF THE TRAFFIC CONTROL PLAN (TCP) EVERYDAY THERE IS TO BE A SHORT TERM TRAFFIC RESTRICTION, LANE CLOSURE, ETC. THIS TCP SHALL SHOW HOW THE WORK ZONES ARE TO BE IMPLEMENTED.

THE WTS SHALL BE AVAILABLE ON A 24-HOUR BASIS TO REPAIR AND/OR REPLACE DAMAGED OR MISSING TRAFFIC CONTROL DEVICES. A 24-HOUR PHONE NUMBER SHALL BE MADE AVAILABLE TO THE PROJECT ENGINEER IN ORDER TO CONTACT THE WTS. THE WTS SHALL HAVE A PAGER AND THE PHONE NUMBER PROVIDED TO THE PROJECT ENGINEER.

FAILURE OF THE CONTRACTOR TO COMPLY WITH ANY OF THE ABOVE, SHALL CONSTITUTE CAUSE FOR THE PROJECT ENGINEER TO DEDUCT \$500.00 PER DAY FROM MONEY DUE TO THE CONTRACTOR NOT AS A PENALTY, BUT AS A LIQUIDATED DAMAGE.

PAYMENT FOR THE WTS SHALL BE INCLUDED UNDER THE LUMP SUM ITEM 614 - MAINTAINING TRAFFIC.

I. FAILURE TO COMPLY

IF THERE IS ANY FAILURE TO COMPLY WITH PROVISION FOR TRAFFIC CONTROL SET OUT IN THESE PLANS AND NOTES, OR WITH THE PROVISIONS OF THE "MANUAL", THE HIGHWAY IN THE VICINITY OF THE WORK AREA SHALL NOT BE CONSIDERED IN A CONDITION FOR THE SAFE AND CONVENIENT USE BY THE TRAVELING PUBLIC. ANY FAILURE TO KEEP THE HIGHWAY, IN THE VICINITY OF THE WORK AREA, IN A CONDITION FOR THE SAFE AND CONVENIENT USE BY THE TRAVELING PUBLIC SHALL BE CONSIDERED A BREACH OF THIS CONTRACT. WORK SHALL BE SUSPENDED UNTIL THE CONTRACTOR COMPLIES WITH THE PROVISION OF THE AFOREMENTIONED ITEMS.

TRAFFIC CONTROL MATERIAL

A. SIGNS

SIGN DIMENSIONS AND SPECIFICATIONS, INCLUDING LETTER SIZES SHALL BE AS PROVIDED IN THE "MANUAL", OR IN DESIGN DRAWINGS PROVIDED BY THE DEPARTMENT OF TRANSPORTATION. THE SIGNS SHALL BE SUBJECT TO APPROVAL OF THE ENGINEER PRIOR TO THE START OF THIS PROJECT.

B. SIGN SUPPORTS

SIGN SUPPORTS SHALL BE AS SHOWN ON STANDARD DRAWINGS MT-105.10M AND MT-105.11M.

C. FLASHING ARROWS

THE ELECTRIC FLASHING ARROW SHALL BE AS SHOWN ON STANDARD CONSTRUCTION DRAWING MT-35.10M AND MT-35.11M.

D. CONES

CONES SHALL BE LOCATED AS SHOWN IN THE "MANUAL" AND THE TRAFFIC CONTROL PLANS.

E. DRUMS

DRUMS SHALL BE LOCATED AS SHOWN ON THE TRAFFIC CONTROL PLANS AND ARE REQUIRED FOR NIGHTTIME CLOSURES.

F. FLOODLIGHTING

FLOODLIGHTING OF THE WORK SITE FOR OPERATIONS CONDUCTED DURING NIGHT TIME PERIODS SHALL BE ACCOMPLISHED SO THAT THE LIGHTS DO NOT CAUSE GLARE TO THE DRIVERS ON THE ROADWAY. TO ENSURE ADEQUACY OF THE FLOODLIGHT PLACEMENT, THE CONTRACTOR AND ENGINEER SHALL DRIVE THROUGH THE WORK SITE EACH NIGHT WHEN THE LIGHTING IS IN PLACE AND OPERATIVE PRIOR TO COMMENCING ANY WORK. IF GLARE IS DETECTED THE LIGHT PLACEMENT AND SHIELDING SHALL BE ADJUSTED TO THE SATISFACTION OF THE ENGINEER BEFORE WORK PROCEEDS.

PAYMENT FOR ALL LABOR, EQUIPMENT AND MATERIALS SHALL BE INCLUDED IN THE LUMP SUM CONTRACT PRICE FOR MAINTAINING TRAFFIC.

G. PORTABLE CHANGEABLE MESSAGE SIGN, AS PER PLAN

THE CONTRACTOR SHALL FURNISH, INSTALL, MAINTAIN, AND REMOVE WHEN NO LONGER NEEDED A PORTABLE CHANGEABLE MESSAGE SIGN(S). THE PCMS SHALL BE OF THE TYPE SHOWN ON THE LIST OF APPROVED PCMS MAINTAINED BY THE DIRECTOR. THE PCMS SHALL BE A CLASS I OR II TYPE UNIT.

THE PORTABLE CHANGEABLE MESSAGE SIGN SHALL BE MOUNTED ON A TRAILER. NO FLIP DISC SIGNS ARE PERMITTED. THE LOCATION OF THE PCMS SHALL BE AS DIRECTED BY THE ENGINEER. THE ENGINEER SHALL BE PROVIDED ACCESS TO EACH SIGN UNIT AND SHALL BE PROVIDED WITH APPROPRIATE TRAINING AND OPERATION INSTRUCTIONS.

THE PCMS SHALL CONTAIN A CELLULAR TELEPHONE LINK WHICH WILL ALLOW REMOTE SIGN ACTIVATION, DEACTIVATION, MESSAGE CHANGES, MESSAGE ADDITIONS AND REVISIONS TO TIME OF DAY PROGRAMS. THE SYSTEM SHALL ALSO PERMIT VERIFICATION OF CURRENT AND PROGRAMMED MESSAGES.

THE CONTRACTOR SHALL PROVIDE TO THE ENGINEER THE SOFTWARE NECESSARY TO CONTROL THE PCMS REMOTELY.

THE PCMS SHALL BE EQUIPPED WITH A MYRIAD SAFETY BEAM OR AN APPROVED EQUAL AS DETERMINED BY THE ENGINEER. THE MYRIAD SAFETY BEAM SENDS OUT A SIGNAL THAT ACTIVATES RADAR DETECTORS. THE BEAM IS APPROVED BY THE F.C.C. THE MYRIAD SAFETY BEAM SHALL USE THE SAME POWER SUPPLY AS THE PCMS. THE MYRIAD SAFETY BEAM SHALL BE ABLE TO BE ACTIVATED WITH THE PCMS RUNNING OR NOT. THE MYRIAD SAFETY BEAM IS DISTRIBUTED BY THE TRIPLEX GROUP, INC., P.O. BOX 428, NEW HOPE, PA 18938, PHONE (215) 862-5077.

AT THE DIRECTION OF THE ENGINEER THE PCMS MAY BE REMOVED FOR PERIODS OR TIMES WHEN NOT IN USE. NO PAYMENT WILL BE MADE FOR THESE TIMES (EX. WINTER MONTHS).

THERE SHALL BE ONE CLASS I OR II CHANGEABLE MESSAGE SIGN AT EACH TWO (2) LANE CLOSURE IN EACH DIRECTION.

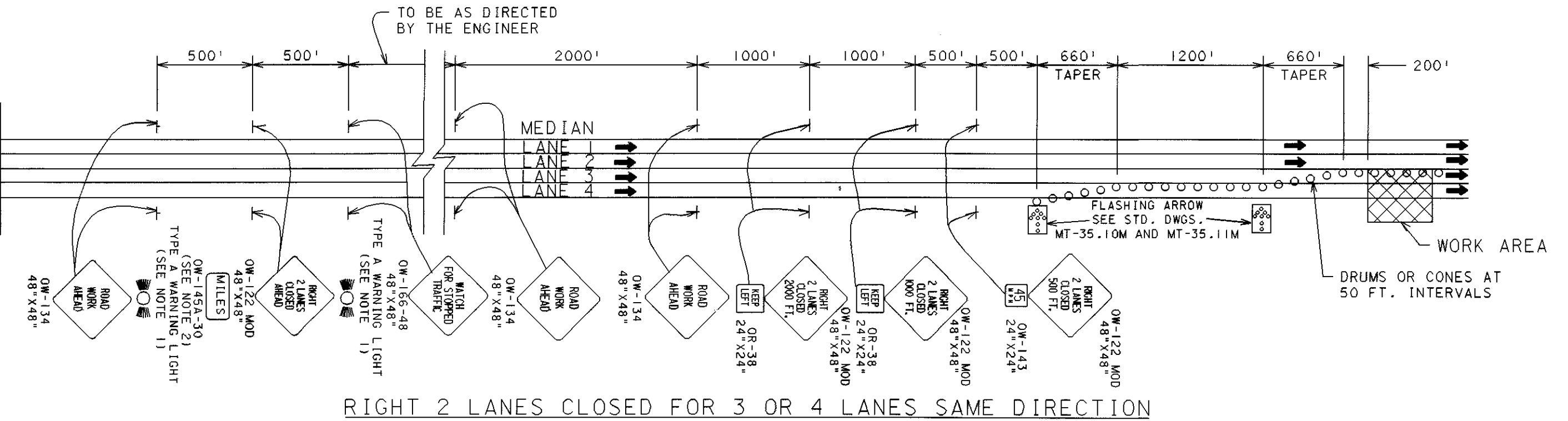
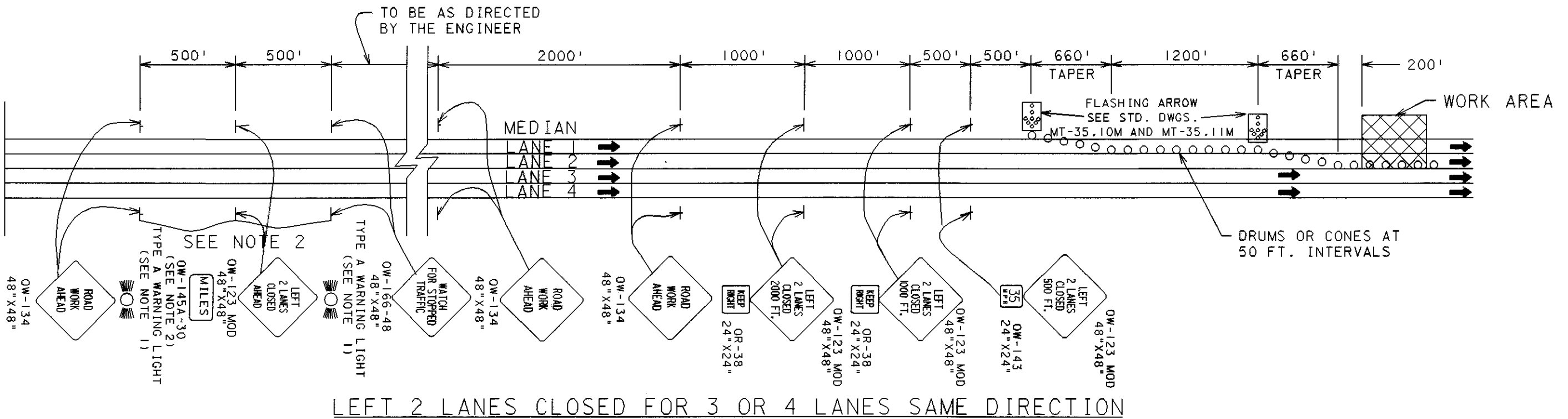
PAYMENT FOR THE PORTABLE CHANGEABLE MESSAGE SIGNS SHALL BE AT THE LUMP SUM UNIT PRICE BID FOR ITEM 614 - MAINTAINING TRAFFIC.

H. WORK VEHICLES

ALL WORK VEHICLES LICENSED TO OPERATE ON THE HIGHWAY, INCLUDING TRUCKS, SHALL BE EQUIPPED WITH A FLASHING, ROTATING OR OSCILLATING AMBER LIGHT VISIBLE TO ALL DIRECTIONS OF TRAFFIC FOR A MINIMUM OF ONE-HALF KILOMETER IN BRIGHT SUNLIGHT AND SHALL BE OPERATED WITH LIGHTED HEAD AND TAIL LAMPS. THE AMBER LIGHT SHALL BE IN OPERATION AT ALL TIMES WITHIN THE WORK ZONE AND WHILE TRAVELING TO AND FROM THE WORK ZONE WHENEVER THE VEHICLE SPEED IS BELOW 55 MPH. VEHICLE HAZARD LAMPS DO NOT SATISFY THIS REQUIREMENT. ALL OTHER EQUIPMENT SHALL BE EQUIPPED WITH A FLASHING, ROTATING OR OSCILLATING AMBER LIGHT VISIBLE IN ALL DIRECTIONS OF TRAFFIC FOR A MINIMUM OF ONE-HALF KILOMETER IN BRIGHT SUNLIGHT. THE AMBER LIGHT SHALL BE IN OPERATION WHILE THE EQUIPMENT IS WITHIN THE WORK ZONE.

PAYMENT

PAYMENT FOR PROVIDING, ERECTING, MAINTAINING AND REMOVING TEMPORARY MAINTENANCE OF TRAFFIC CONTROL DEVICES SHALL BE MADE UNDER THE LUMP SUM PRICE BID FOR ITEM 614 - MAINTAINING TRAFFIC UNLESS SEPARATELY ITEMIZED.



GENERAL NOTES:

1. TYPE A FLASHING WARNING LIGHTS SHOWN ON THE "ROAD CONSTRUCTION AHEAD" AND "RIGHT(OR LEFT) 2 LANES CLOSED AHEAD" SIGNS ARE REQUIRED WHENEVER A NIGHT LANE CLOSURE IS NECESSARY.
2. EXTRA ADVANCE WARNING SIGN GROUPS CONSISTING OF OW-128, OW-122 MOD, OR OW-123 MOD AND OW-166 SIGNS PLUS DISTANCE PLATES MAY BE SPECIFIED IN THE PLANS OR REQUIRED TO BE ERECTED AT THE DIRECTION OF THE ENGINEER.