

MICROFILMED
 MAY 27 1968

STATE OF OHIO
 DEPARTMENT OF HIGHWAYS

F-607(10)

FED. RD. DIVISION	STATE	PROJECT
2	OHIO	F-607(10)

WYA - 23 - 0.20

WYA - 23 - 0.20

WYANDOT COUNTY

ANTRIM & PITT TOWNSHIPS

LIMITED ACCESS

This improvement is especially designed for through traffic and has been declared a limited access highway or freeway by action of the Director of Highways in accordance with the provisions of Section 551.02 of the Revised Code of Ohio.

1965 SPECIFICATIONS

The standard specifications of the State of Ohio, Department of Highways, including changes and supplemental specifications listed in the proposal shall govern this improvement.

The right of way for this improvement will be provided by the State of Ohio.

I hereby approve these plans and declare that the making of this improvement will not require closing of the highway to traffic and that provisions for the maintenance and safety of traffic will be as set forth on the plans and estimates.

Approved Norman R. Cow
 Date 6-16-65 Division Deputy Director

Approved C.H. Altwater
 Date 1-4-66 Engineer of Bridges

Approved D.N. Ricketts
 Date 1-14-66 Engineer of Location and Design

Approved P.E. Shultz
 Date 1-14-66 Deputy Director of Design and Construction

Approved T.H. Borah
 Date 1-19-66 Deputy Director of Right-of-Way

Approved R.W. Wilson
 Date 1-19-66 Deputy Director of Planning and Programming

Approved _____
 Date _____ First Assistant Director

Approved P.E. Mearns
 Date 1-19-66 Director of Highway

* See Sheet 5 for list of 1963 and superseding 1965 Standard Drawings and Supplemental Specifications.

Plans prepared by BARRETT ASSOCIATED ENGINEERS Ltd.
W. Warren Jones P.E. 18210 April 28, 1965
 1500 West First Avenue Columbus 12, Ohio

CONVENTIONAL SIGNS

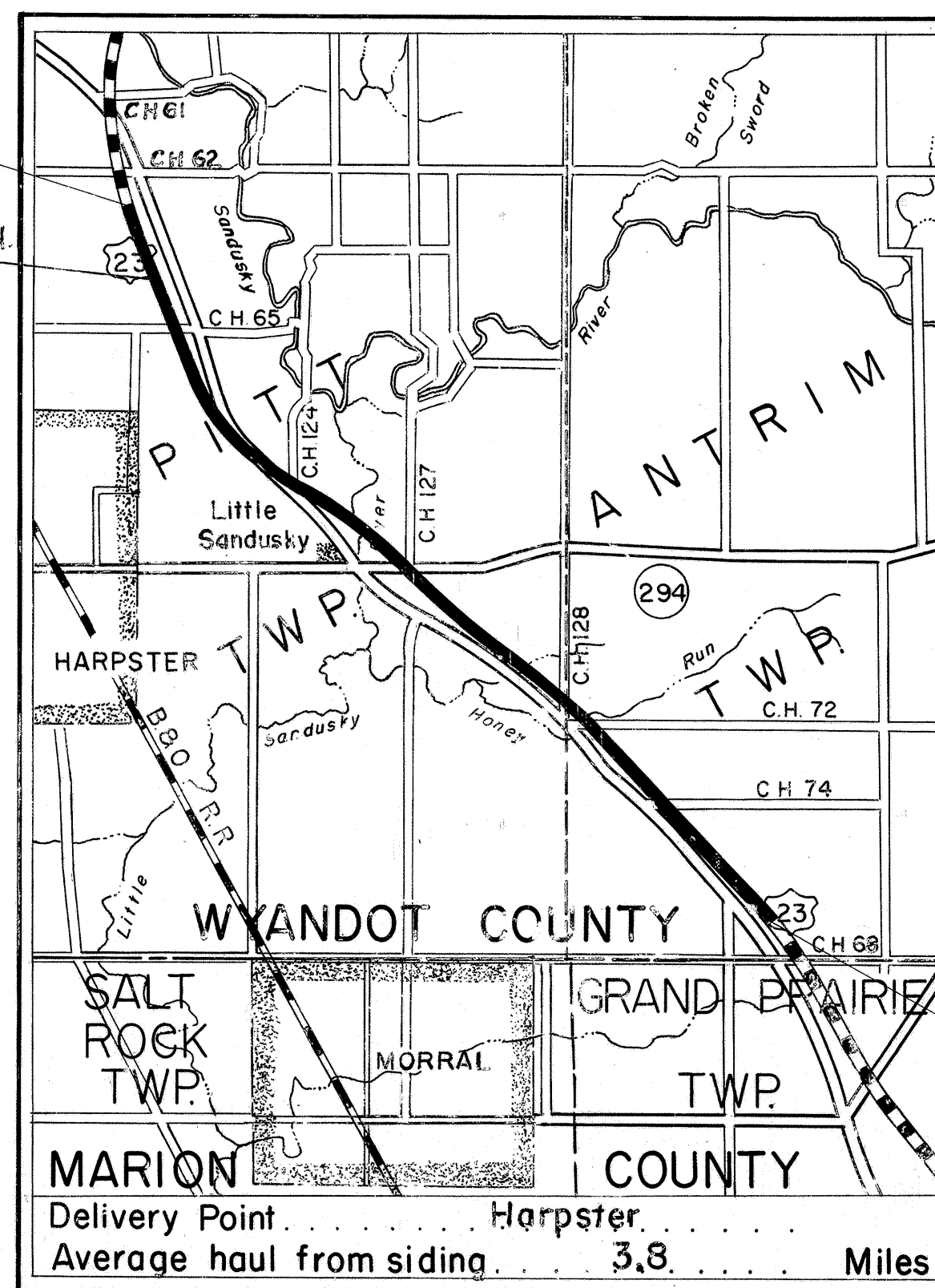
Trees to remain	
Trees or Stumps to be removed	
Property Line	
Right of Way Line	
County Line	
Township Line	
Section Line	
Center Line	
Corporation Line	
Fence Line	
Guard Rail (existing)	
Guard Rail (proposed)	
Railroad	
Power Poles	
Telephone Poles	
Limited Access Right-of-Way Line	
Limited Access Line	

INDEX OF SHEETS

Title Sheet	1	Relocated S.R. 294	138-144
Schematic Plan & Design Designation	2	Relocated Co. Rd. 124	145-149
Typical Sections	3-4	East Service Road (North)	150-152
General Notes	5-6	Pavement Details	153-158
General Summary	7-8-8A	Miscellaneous Details	158-160
Sub-Summaries	9-11	Structures 20' Span & Under	161-177
Plan and Profile Sheets	12-47	Honey Run Cross Sections	178-180
Superelevation Table	48	Relocated Little Sandusky River	
Cross Sections	49-128	Plan & Cross Sections	181-185
East Service Road (South) &		Signing Details	186-191
Relocated Co. Rd. 74	129-130	Structures Over 20' Span	192-204
Relocated Co. Rd. 72 & 128	131-137	Right-of-Way	205-232

LINE DATA

Begin Project	Station 10 + 75.45	
End Project	Station 291 + 94.77	
Gross Length of Project	28,119.32	Lin. Ft.
Equation: Station 323 + 27.93 Back = Station 265 + 18.48 Ahead	(+) 5,809.45	Lin. Ft.
Net Length of Project	33,928.77	Lin. Ft. or 6.425 Miles
Add for Approaches:		
South Approach	sta 1061+00.00 to Sta. 1063+00.00	200.00 Lin. Ft.
North Approach	sta 291+94.77 to Sta. 299+00.00	705.23 Lin. Ft.
Relocated County Road 74	Sta. 19+61.51 to Sta. 24+27.94 Less 98.00	468.43 Lin. Ft.
Relocated County Road 72	Sta. 17+79.79 to Sta. 25+69.29 Less 99.14	690.36 Lin. Ft.
Relocated County Road 124	Sta. 15+00.00 to Sta. 25+97.28 Less 104.28	993.00 Lin. Ft.
Relocated State Route 294	Sta. 9+75.00 to Sta. 620+55.00 See Sh. 138-139	1,647.84 Lin. Ft.
Net Length of Work	38,633.63	Lin. Ft. or 7.316 Miles



LOCATION MAP
 SCALE OF MILES

Portion to be improved
 State Roads
 Other Roads
 Under Construction

SCALE
 SCALE OF PLAN IN FEET

Profile: Horizontal _____ 1" = 50'
 Profile: Vertical _____ 1" = 10'
 Cross Sections _____ 1" = 10'

* SUPPLEMENTAL PRINTS OF STANDARD CONSTRUCTION DRAWINGS

BP-5	6-1-65	HW-E	6-1-65	P-1-54	2-2-65
BP-6	6-1-65	L-1	6-1-65	CS-1-65(1&2)	6-1-65
CB-2-2-A & B	6-1-65	MC-1	6-1-65	AS-1-54	8-10-65
F-2	6-1-65	MC-3	6-1-65	CSB-1-63(1)	12-16-63
F-3	6-1-65	MC-4	6-1-65	FSB-1-62	1-15-63
FACI-1	6-1-65	SP-53	6-30-61	SD-1-63(2)	11-12-63
FACI-2	6-1-65			SD-2-64	11-25-64
GR-1	6-1-65			A-1-54	12-1-54
GR-2A	9-1-65				
GR-5B	6-1-65				

* SUPPLEMENTAL SPECIFICATIONS

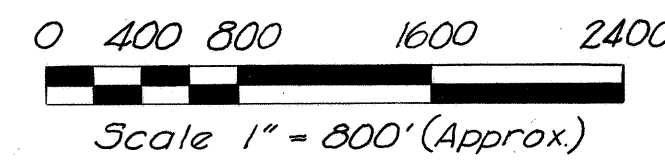
801	9-2-65
808	7-14-65
815	8-6-65
816	8-6-65
811	3-29-65
825	4-22-65

FILE NO.	WYANDOT COUNTY
	WYA-23-0.20
	Date of Letting _____ 19____
	Contract No. _____

DEPARTMENT OF COMMERCE
 BUREAU OF PUBLIC ROADS
 APPROVED: _____
 DIVISION ENGINEER _____ DATE _____

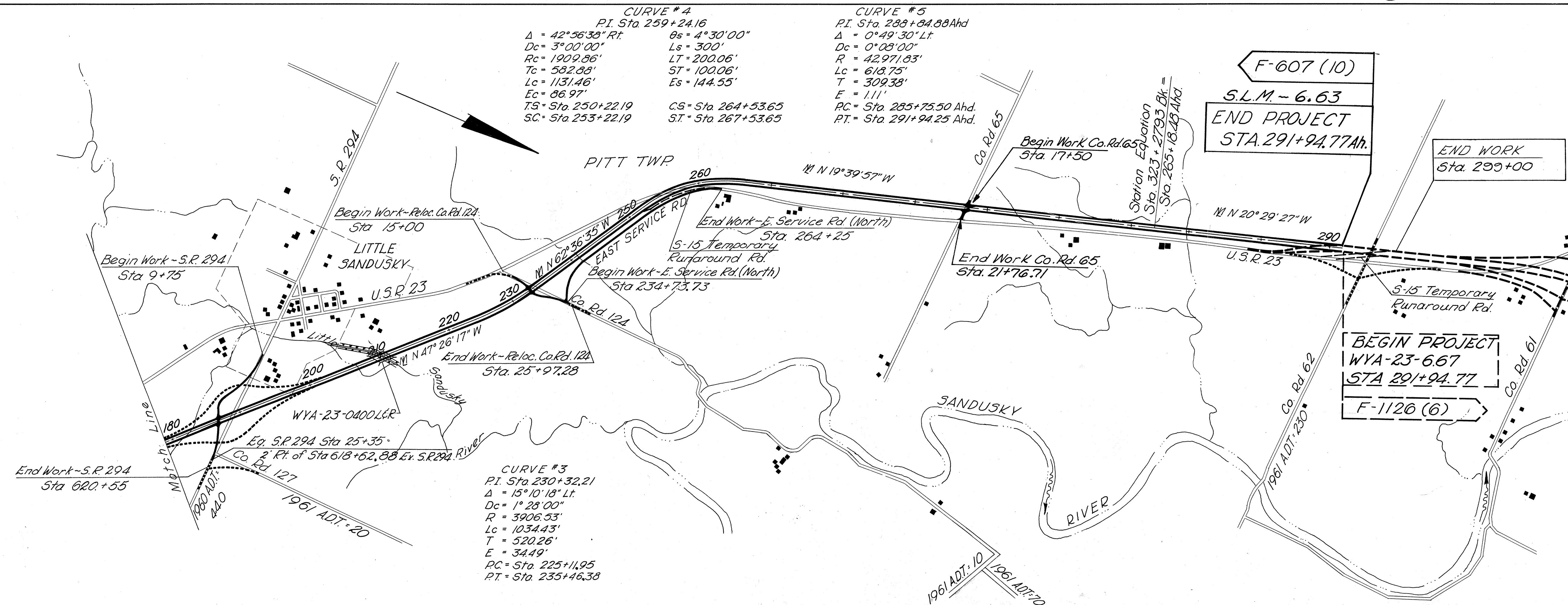
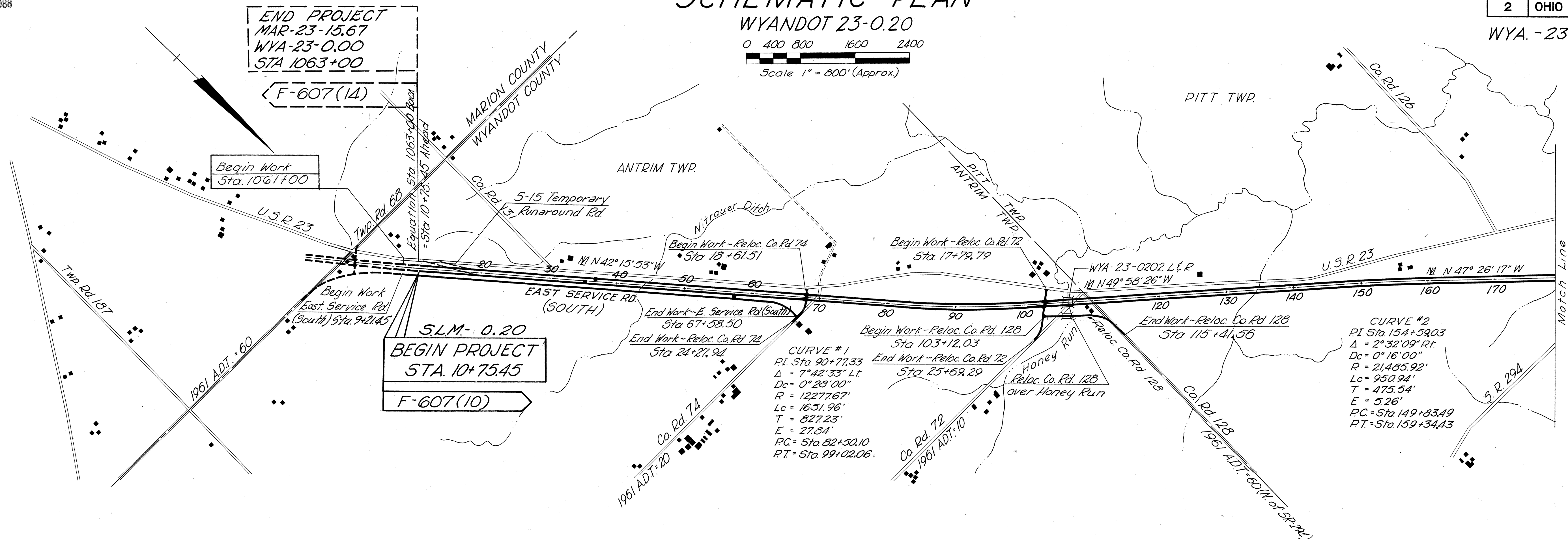
SCHEMATIC PLAN

WYANDOT 23-0.20



FED. RD. DIVISION	STATE	PROJECT	
2	OHIO		2

WYA. - 23 - 0.20

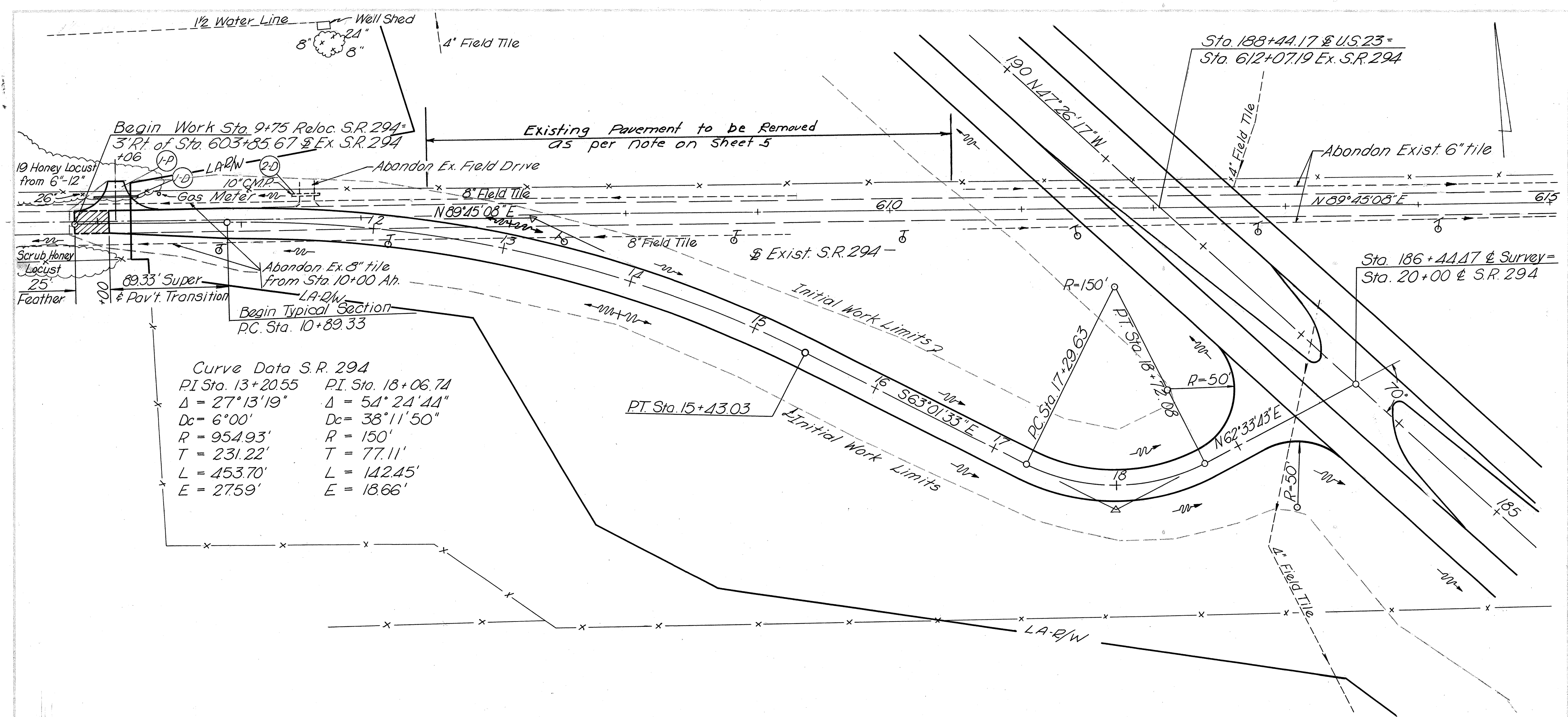


DESIGN DESIGNATION

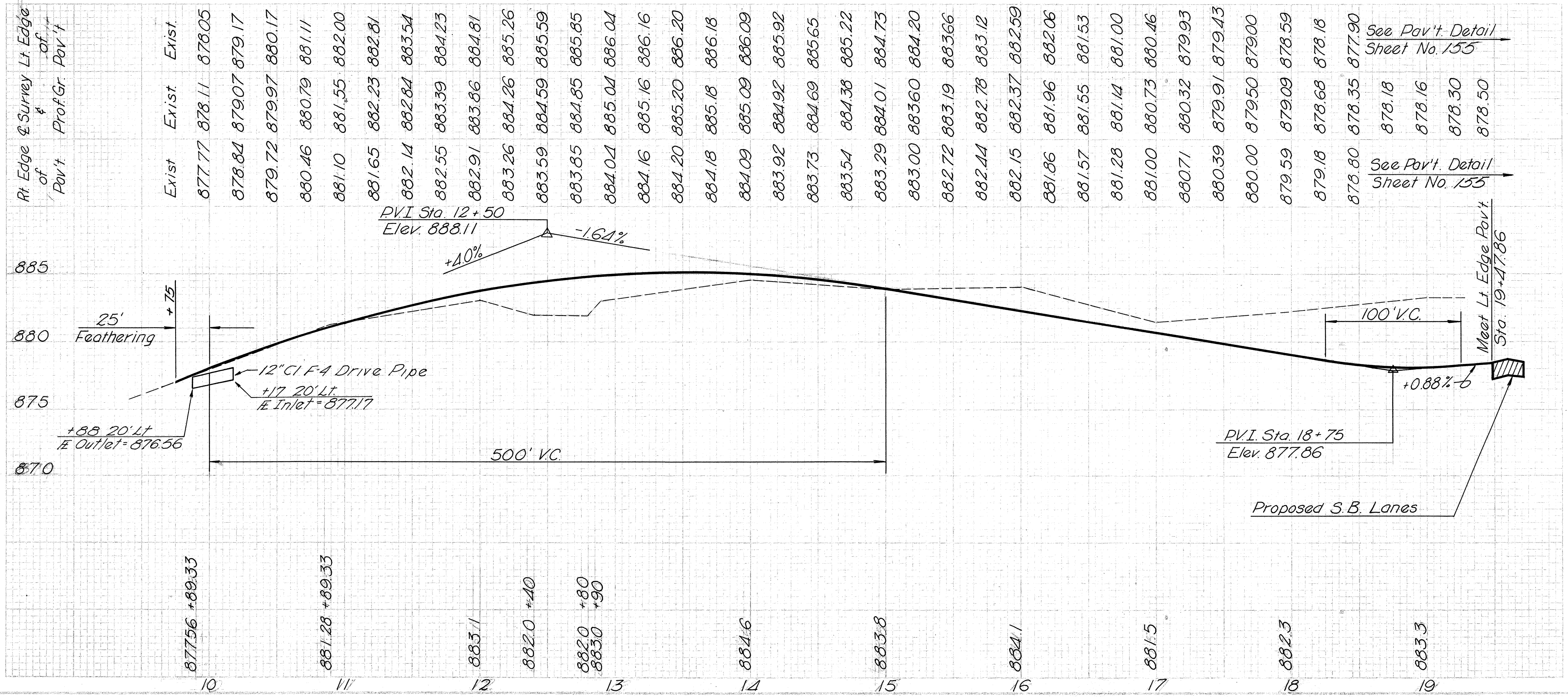
Current ADT	6,800
Design Year ADT	12,480
D.H.V.	1,870
D.	50%
T.	4,100
V.	70
Design Year	1982

Phase I Construction
 Future Construction
 Phase I Construction (Another Contract)

WYA-23-0.20



Curve Data S.R. 294
 PI Sta. 13+20.55 PI Sta. 18+06.74
 $\Delta = 27^\circ 13' 19''$ $\Delta = 54^\circ 24' 44''$
 $D_c = 6' 00''$ $D_c = 38' 11' 50''$
 $R = 954.93'$ $R = 150'$
 $T = 231.22'$ $T = 77.11'$
 $L = 453.70'$ $L = 142.45'$
 $E = 2759'$ $E = 1866'$

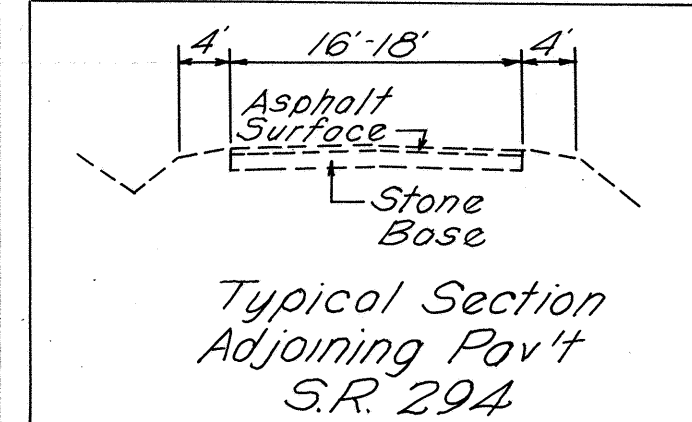
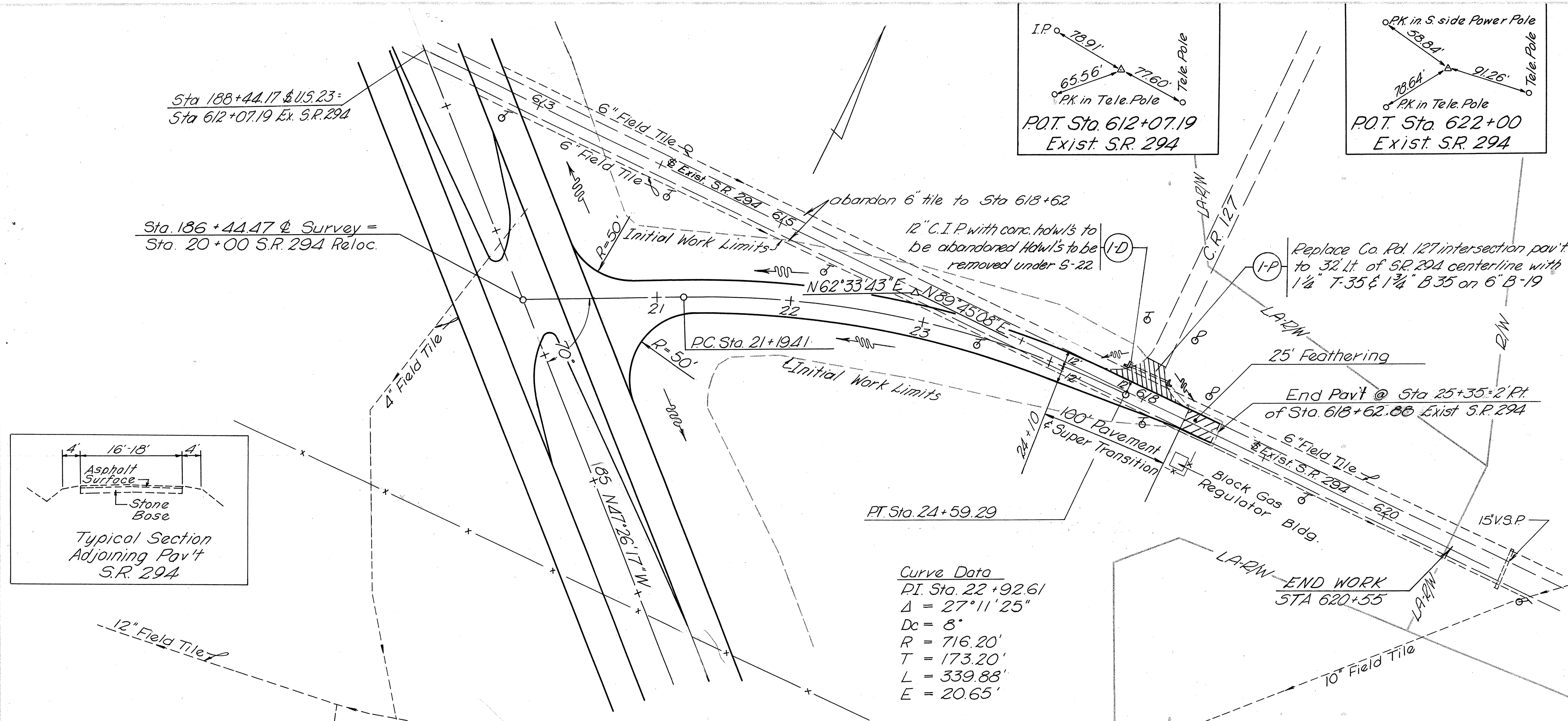


ESTIMATED QUANTITIES

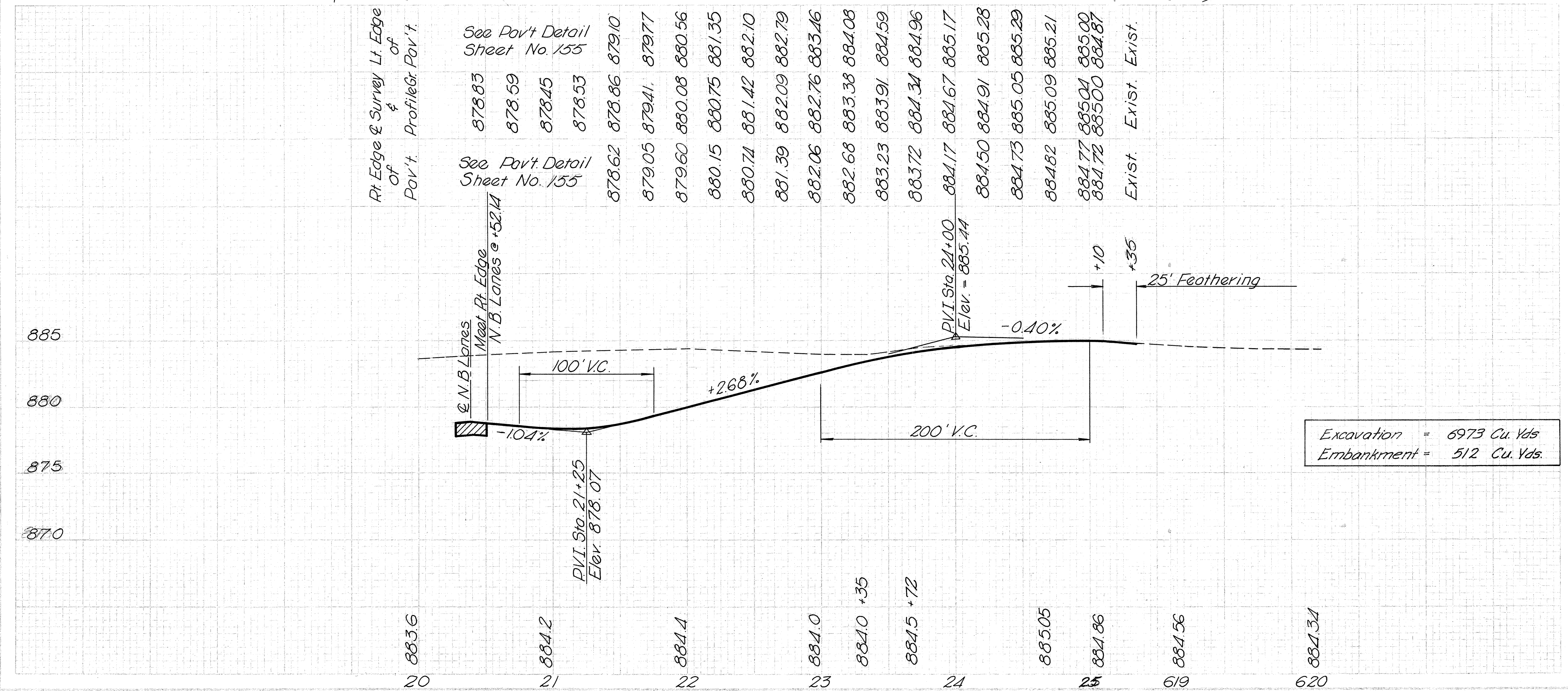
REF. NO.	STATION TO STATION	SIDE	QTY
1-D	9+88.10+17	Lt	
2-D	11+40-11+66	Lt	
1-P	10+06	Lt	
5-12	1-1		35
5-12	2-2		28
5-19			142

S.R. 294 Reloc. Sta. 9+75.00 to Sta. 20+00

WYA-23-0.20



Curve Data
 P.I. Sta. 22+92.61
 $\Delta = 27^\circ 11' 25''$
 $D_c = 8'$
 $R = 716.20'$
 $T = 173.20'$
 $L = 339.88'$
 $E = 20.65'$



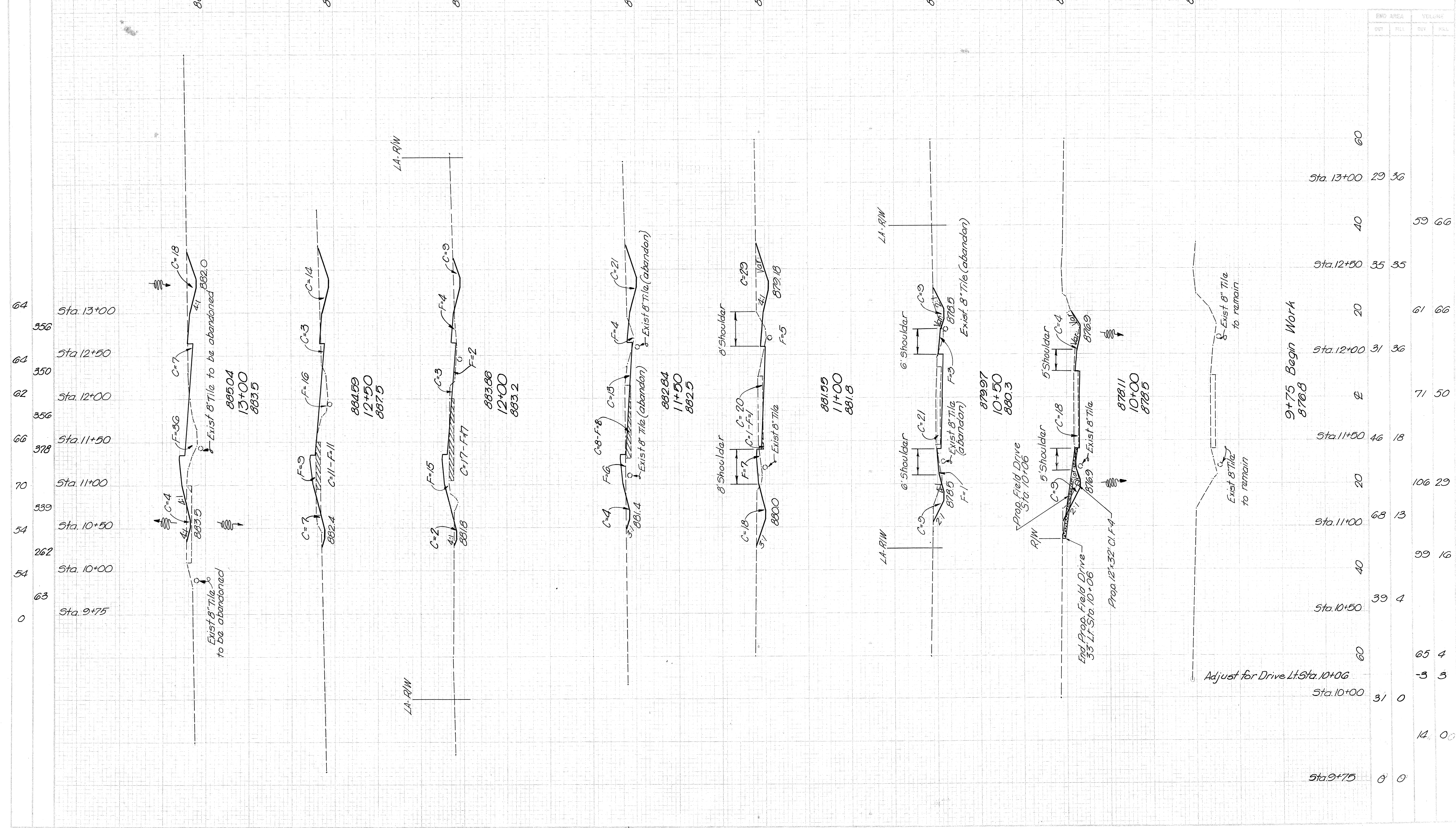
Excavation = 6973 Cu. Yds.
 Embankment = 512 Cu. Yds.

ESTIMATED QUANTITIES

REF. NO.	STATION TO STATION	SIDE	5-22 Am't of Particls Ex. Street Lump	Lump
I-D	24+53 - 24+68	Lt.		
I-P	24+70			
			2.6	3.6
			3	4
			31	31
			13.0	13
TOTALS				

S.R. 294 Reloc. Sta. 20+00 to Sta. 25+35

WYA-23-0.20



STA.	END AREA		VOLUME	
	OUT	FILL	OUT	FILL
Sta. 13+00	29	36		
Sta. 12+50	35	35		
Sta. 12+00	40	36	59	66
Sta. 11+50	46	18		
Sta. 11+00	68	13		
Sta. 10+50	39	4		
Sta. 10+00	31	0		
Sta. 9+75	0	0		
9+75 Begin Work			71	50
Adjust for Drive Lt. Sta. 10+06			-3	3
			14	00

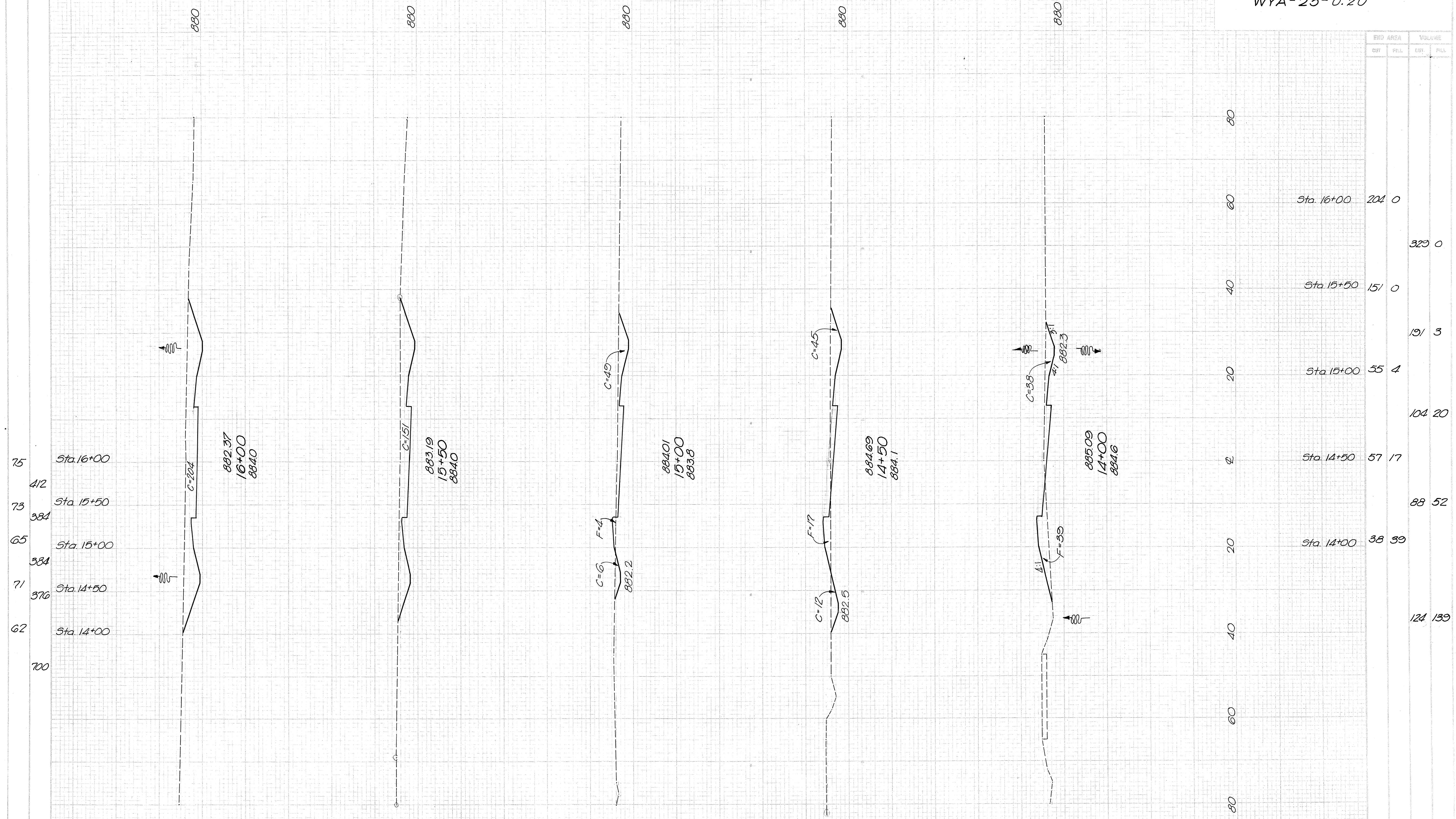
S.R. 294 Sta. 9+64.33 to Sta. 13+00

SEEDING
 EMB WIDTH 30. YRS.

FED. RD. DISTRICT	STATE	PROJECT
2	OHIO	

141

WYA-23-0.20

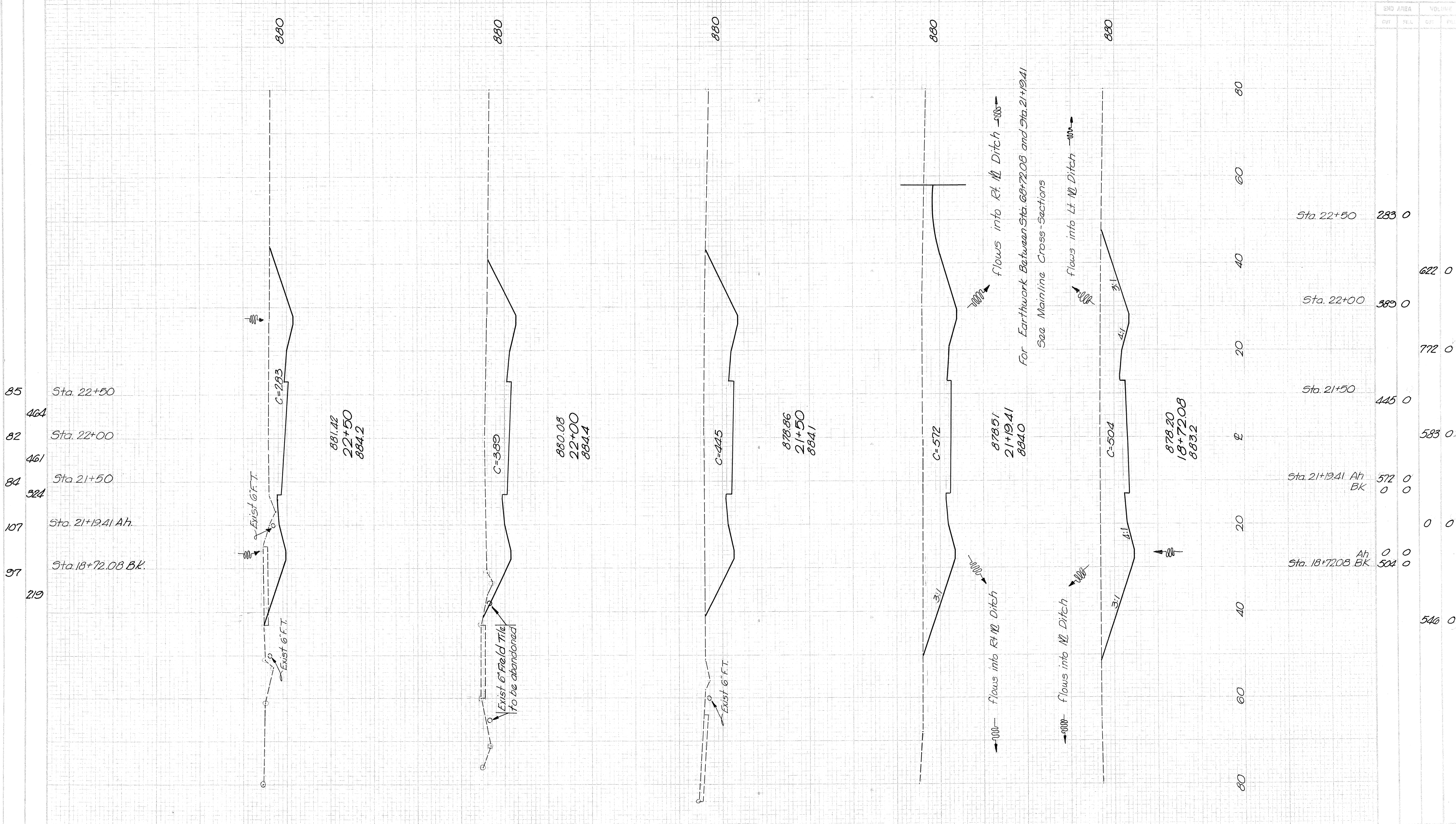


STA.	EMB AREA		VOLUME	
	CUT	FILL	CUT	FILL
Sta. 16+00	204	0		
Sta. 15+50	151	0	329	0
Sta. 15+00	55	4	191	3
Sta. 14+50	57	17	104	20
Sta. 14+00	38	39	88	52
			124	139

S.R. 294 Sta. 14+00 to Sta. 16+00

SEEDING
SQ. YDS.

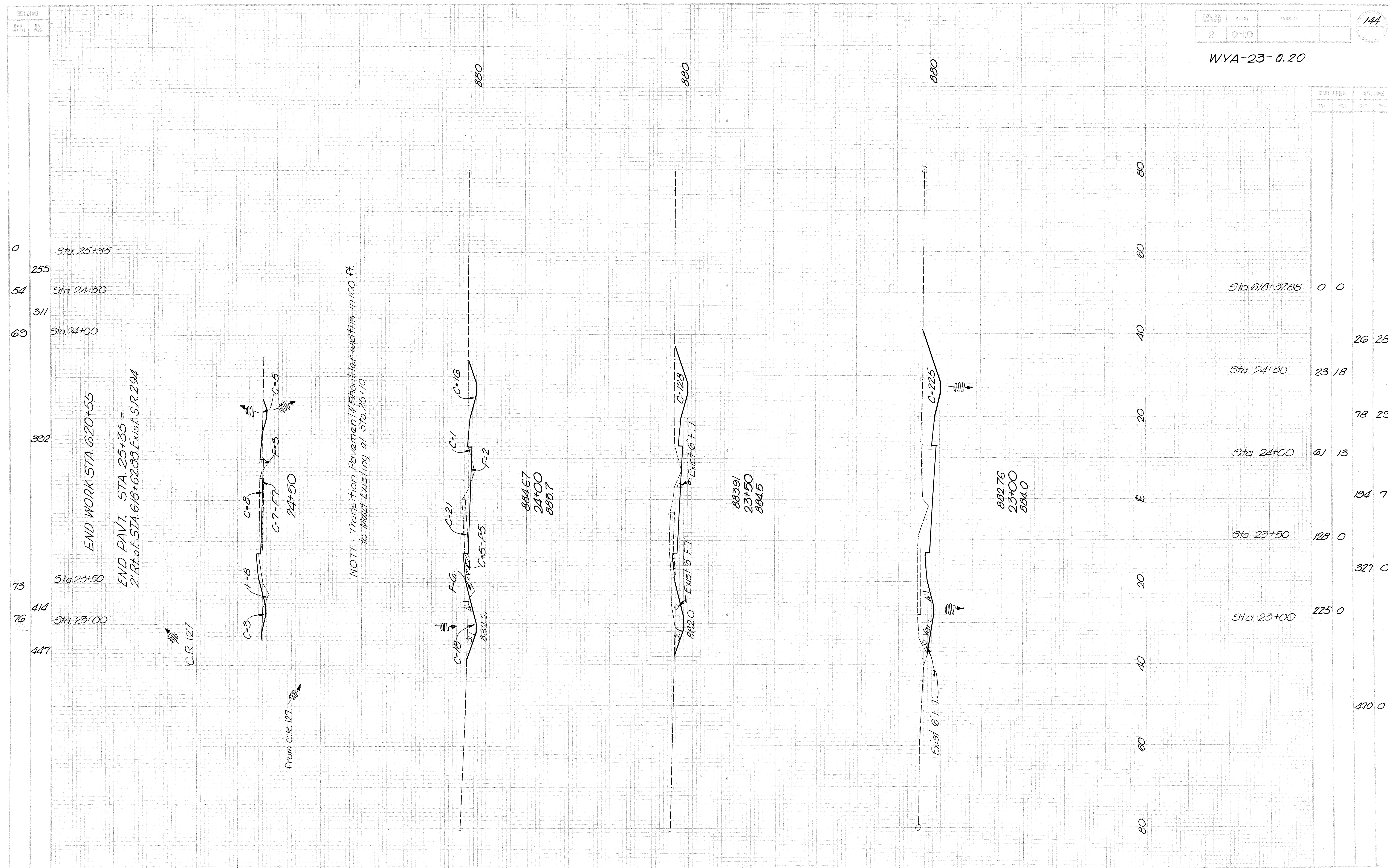
WYA-23-0.20



STATION	END AREA		VOLUME	
	CUT	FILL	CUT	FILL
Sta. 22+50	283	0		
Sta. 22+00	389	0	622	0
Sta. 21+50	445	0	772	0
Sta. 21+19.41	Ah 572	BK 0		
Sta. 18+72.08	Ah 0	BK 504		
			546	0

S. R. 294 Sta. 18+72.08 to Sta. 22+50

WYA-23-0.20



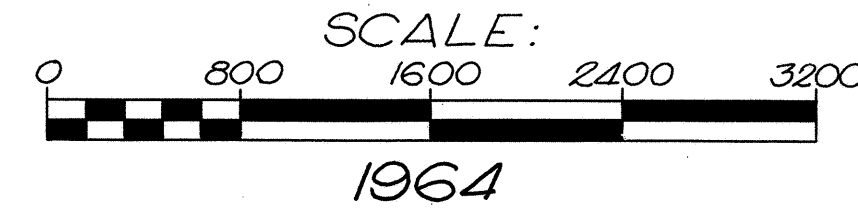
S.R. 294 Sta. 23+00 to Sta. 24+00

THIS IMPROVEMENT HAS BEEN DECLARED A LIMITED ACCESS HIGHWAY BY ACTION OF THE DIRECTOR OF HIGHWAYS AND RECORDED IN VOLUME 46, PAGE 1147 OF THE DIRECTOR'S JOURNAL PURSUANT TO LAW

CENTER LINE SURVEY PLAT

WYA - 23 - 0.

ANTRIM & PITT TOWNSHIPS
WYANDOT COUNTY
R14E, R15E, T3S, T4S



FED. RD. DIVISION	STATE	PROJECT
2	OHIO	

205

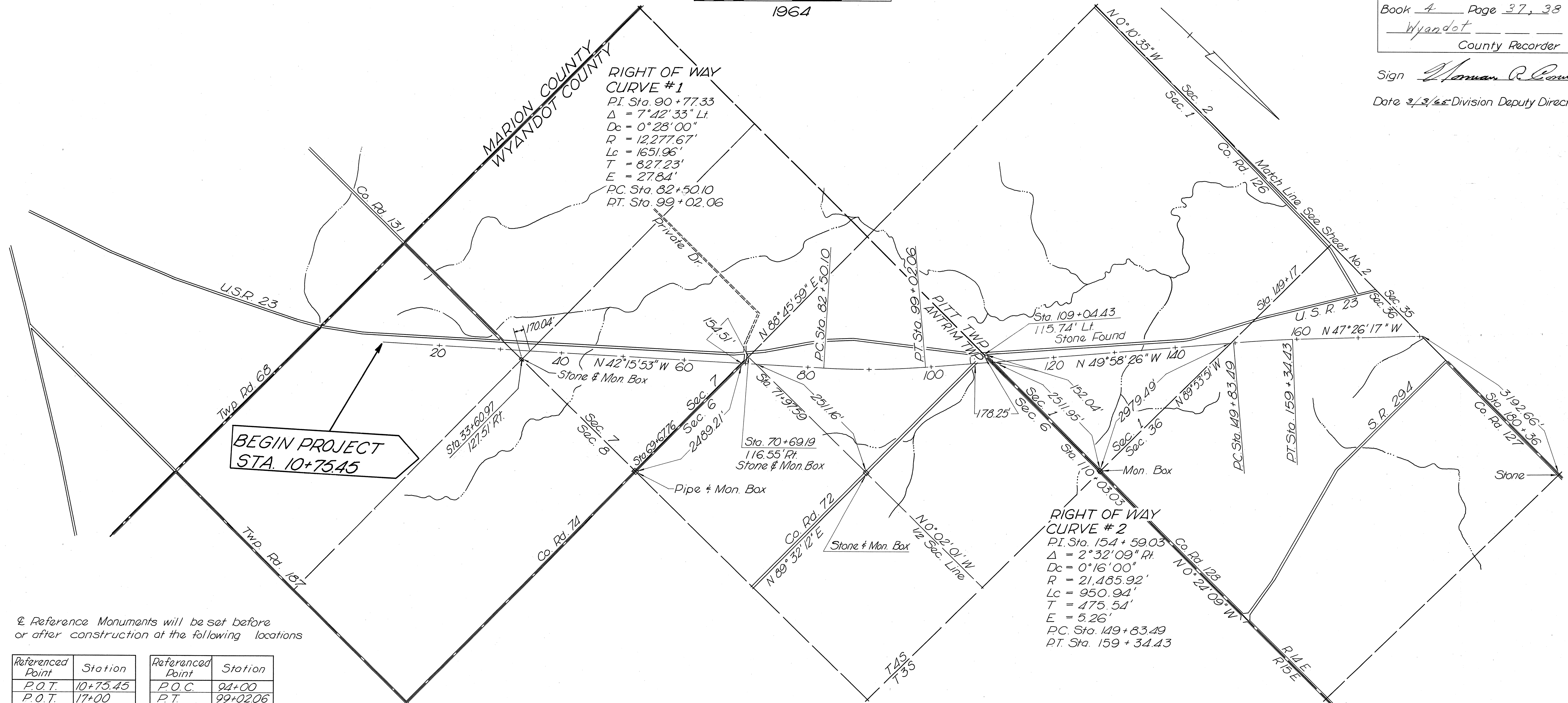
WYA - 23 - 020
LIMITED ACCESS

1
28

Received 3-26-1965
Recorded 3-29-1965
Book 4 Page 37, 38
Wyandot
County Recorder

Sign *Thomas R. Crow*

Date 3/3/65 Division Deputy Director

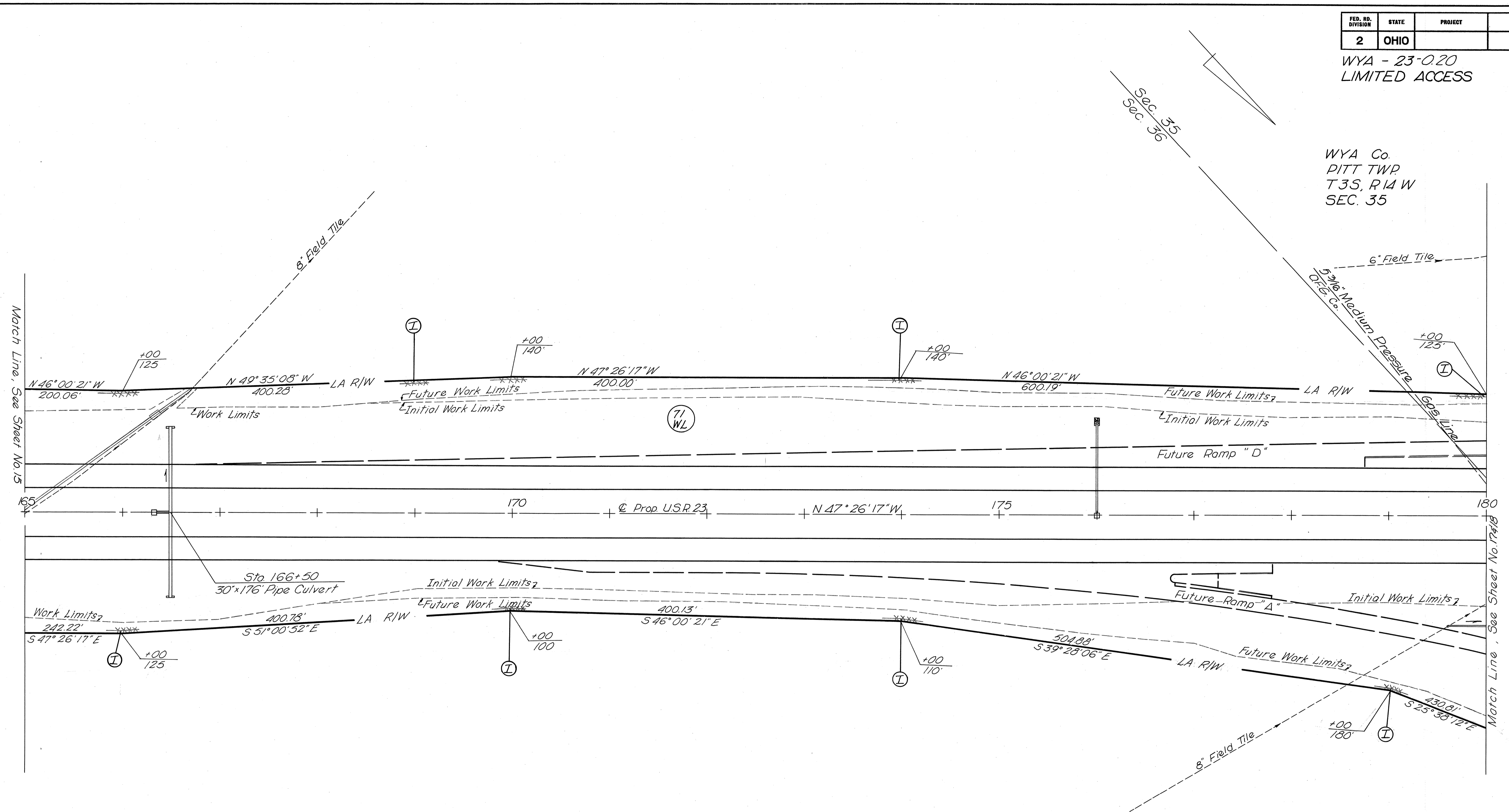


Referenced Point	Station	Referenced Point	Station
P.O.T.	10+75.45	P.O.C.	94+00
P.O.T.	17+00	P.T.	99+02.06
P.O.T.	23+00	P.O.T.	105+00
P.O.T.	29+00	P.O.T.	111+00
127.51' Rt.	33+60.97	P.O.T.	117+00
P.O.T.	35+00	P.O.T.	123+00
P.O.T.	41+00	P.O.T.	129+00
P.O.T.	47+00	P.O.T.	135+00
P.O.T.	53+00	P.O.T.	142+00
P.O.T.	59+00	P.C.	149+83.49
P.O.T.	65+00	P.O.C.	153+00
P.O.T.	71+00	P.T.	159+34.43
P.O.T.	77+00	P.O.T.	165+00
P.C.	82+50.10	P.O.T.	171+00
P.O.C.	88+00	P.O.T.	179+00

I HEREBY CERTIFY THAT THIS PLAT IS A TRUE DELINEATION OF A SURVEY MADE FOR THE OHIO DEPARTMENT OF HIGHWAYS IN 1964 BY BARRETT ASSOC. ENG'S. LTD.

Dwight D. Stucky DATE 2-26-65

WYA Co.
PITT TWP
T3S, R14 W
SEC. 35



HAROLD K. & CAROL I. TIVENAN

71
WL Cont. 21.28 Ac.
PRO. 1.12 Ac.
T.B.A. 22.40 Ac.

WYA Co.
PITT TWP
T3S, R14 E
SEC. 36

Fence = 3011 Lin.Ft.

Rev.	Date	Description

FED. RD. DIVISION	STATE	PROJECT
2	OHIO	

221

WVA - 23-020
LIMITED ACCESS

17
28

WYA Co.
PITT TWP
T3S, R14E
SEC. 35

GERTRUDE HARRIS

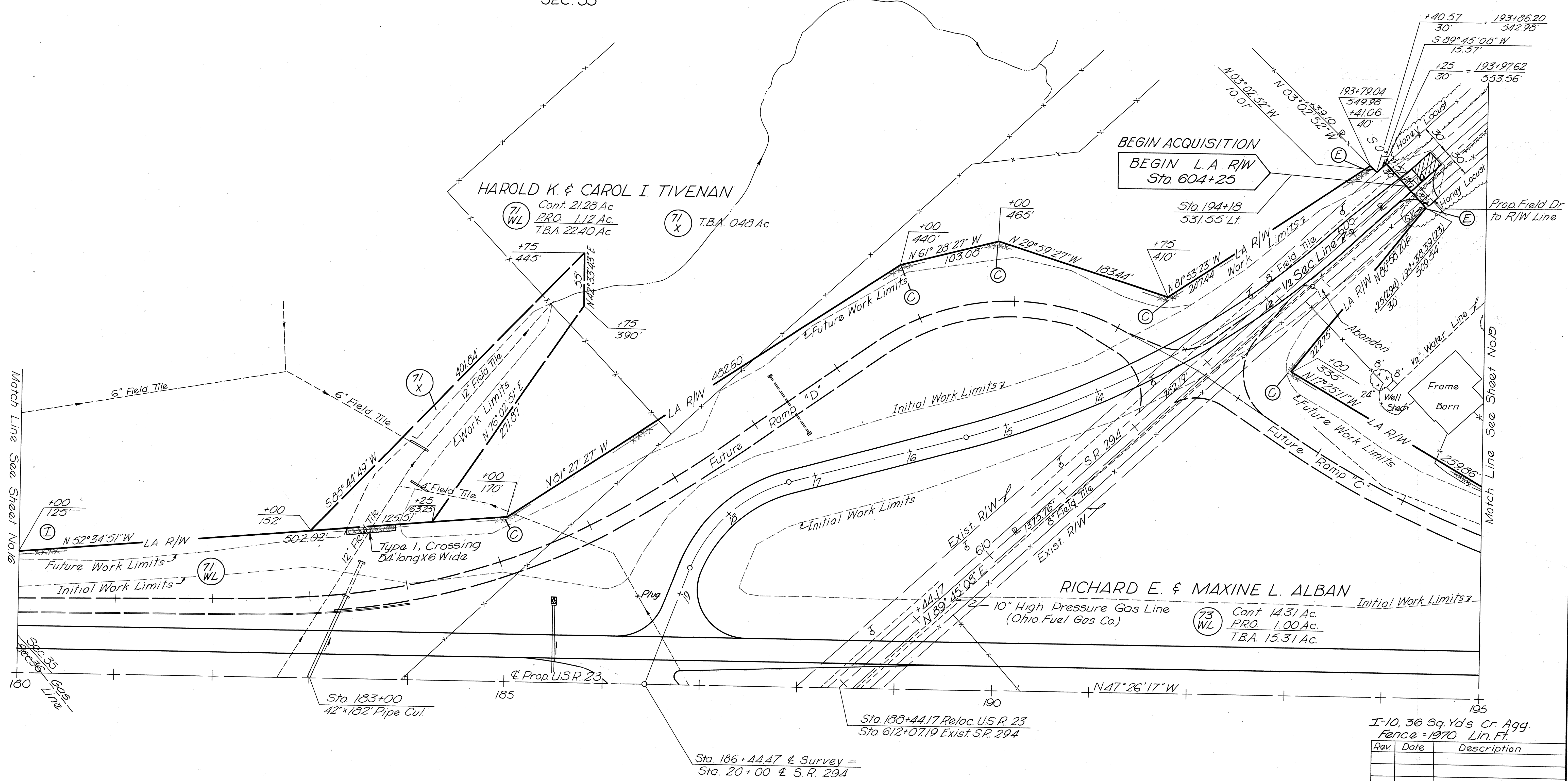
HAROLD K. & CAROL I. TIVENAN

Cont. 21.28 Ac
PRO. 1.12 Ac
T.B.A. 22.40 Ac

BEGIN ACQUISITION
BEGIN L.A. R/W
Sta. 604+25

RICHARD E. & MAXINE L. ALBAN

Cont. 14.31 Ac
PRO. 1.00 Ac
T.B.A. 15.31 Ac



I-10, 36 Sq. Yd's Cr. Agg.
Fence = 1970 Lin. Ft.

Rev	Date	Description

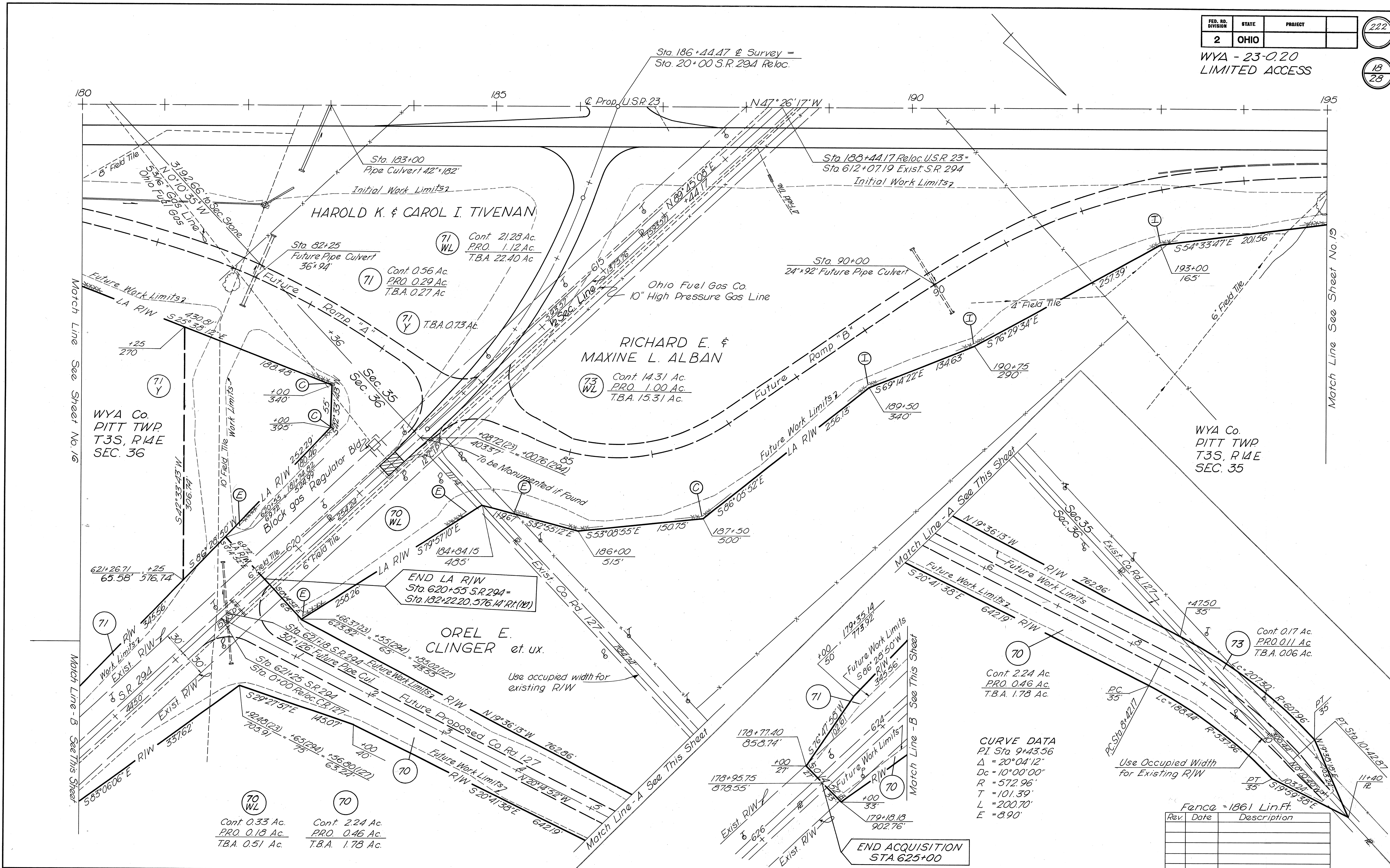
Sta. 186+44.47 & Survey =
Sta. 20+00 & S.R. 294

Sta. 188+44.17 Reloc. U.S.R. 23
Sta. 612+07.19 Exist. S.R. 294

Sta. 183+00
42" x 182" Pipe Cul.

Match Line See Sheet No. 16

Match Line See Sheet No. 18



CURVE DATA
 P.I. Sta 9+43.56
 $\Delta = 20^{\circ}04'12''$
 $Dc = 10^{\circ}00'00''$
 $R = 572.96'$
 $T = 101.39'$
 $L = 200.70'$
 $E = 8.90'$

Face = 1861 Lin.Ft.

Rev.	Date	Description

FED. RD. DIVISION	STATE	PROJECT
2	OHIO	

223

19
28

WYA - 23-020
LIMITED ACCESS

RICHARD E. & MAXINE L. ALBAN
Cont. 14.31 Ac.
PRO. 1.00 Ac.
T.B.A. 15.31 Ac.

73
WL

73
X

73
Y

T.B.A. 0.69 Ac.

74
X

74
WL

74
Y

PETER SWARTZ

74
WL Cont. 17.72 Ac.
PRO. 0.31 Ac.
T.B.A. 18.03 Ac.

74
X T.B.A. 3.94 Ac.

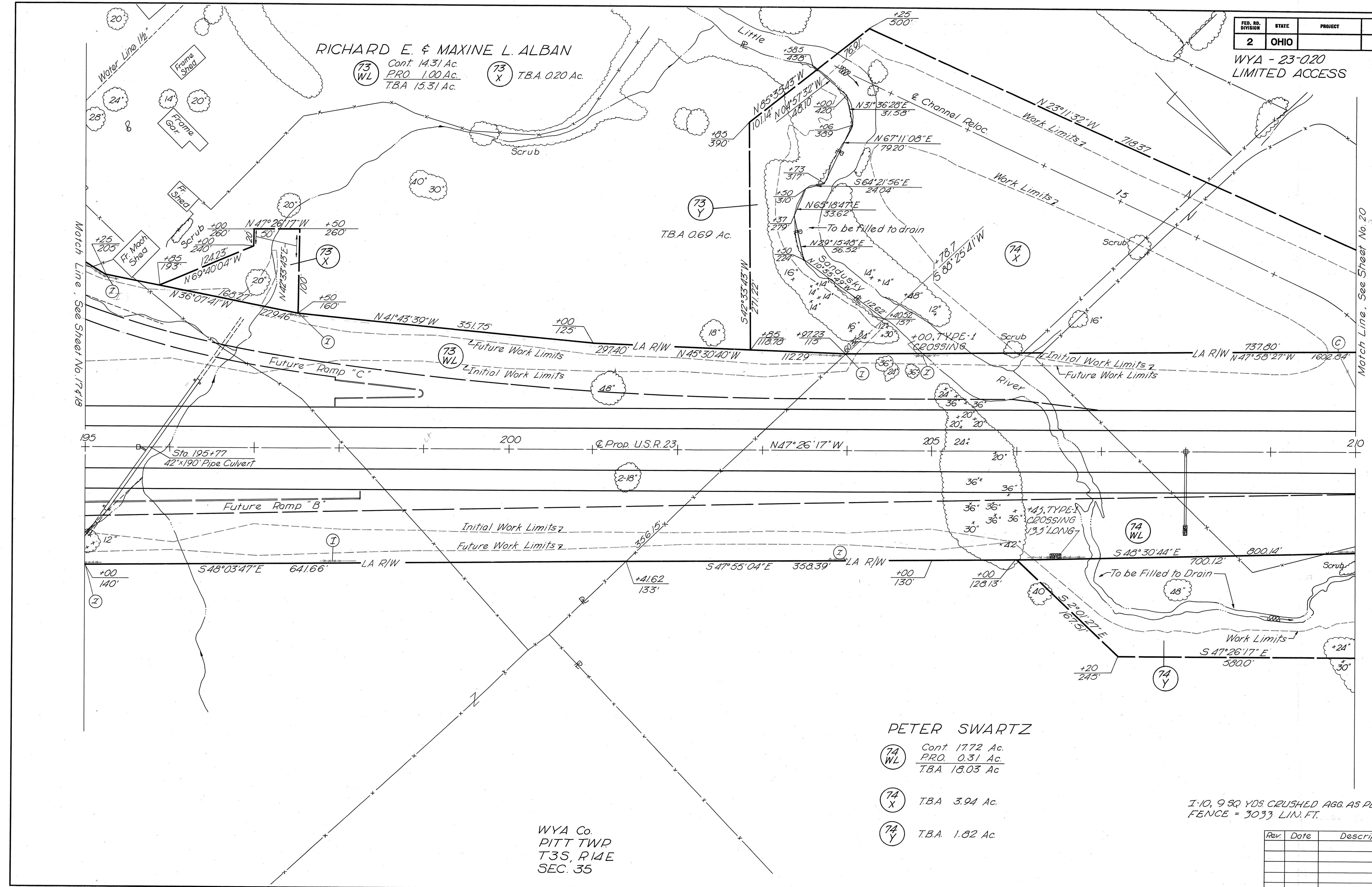
74
Y T.B.A. 1.82 Ac.

WYA Co.
PITT TWP
T3S, R14E
SEC. 35

1-10, 9 SQ. YDS. CRUSHED AGG. AS PER PLAN
FENCE = 3033 LIN. FT.

Rev.	Date	Description

RIGHT OF WAY Sta. 195+00 to Sta. 210+00



Match Line, See Sheet No. 17419

Match Line, See Sheet No. 20