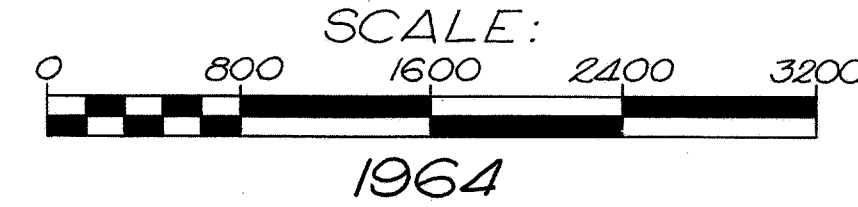


THIS IMPROVEMENT HAS BEEN DECLARED A LIMITED ACCESS HIGHWAY BY ACTION OF THE DIRECTOR OF HIGHWAYS AND RECORDED IN VOLUME 46, PAGE 1147 OF THE DIRECTOR'S JOURNAL PURSUANT TO LAW

CENTER LINE SURVEY PLAT

WYA - 23 - 0.

ANTRIM & PITT TOWNSHIPS
WYANDOT COUNTY
R14E, R15E, T3S, T4S



FED. RD. DIVISION	STATE	PROJECT
2	OHIO	

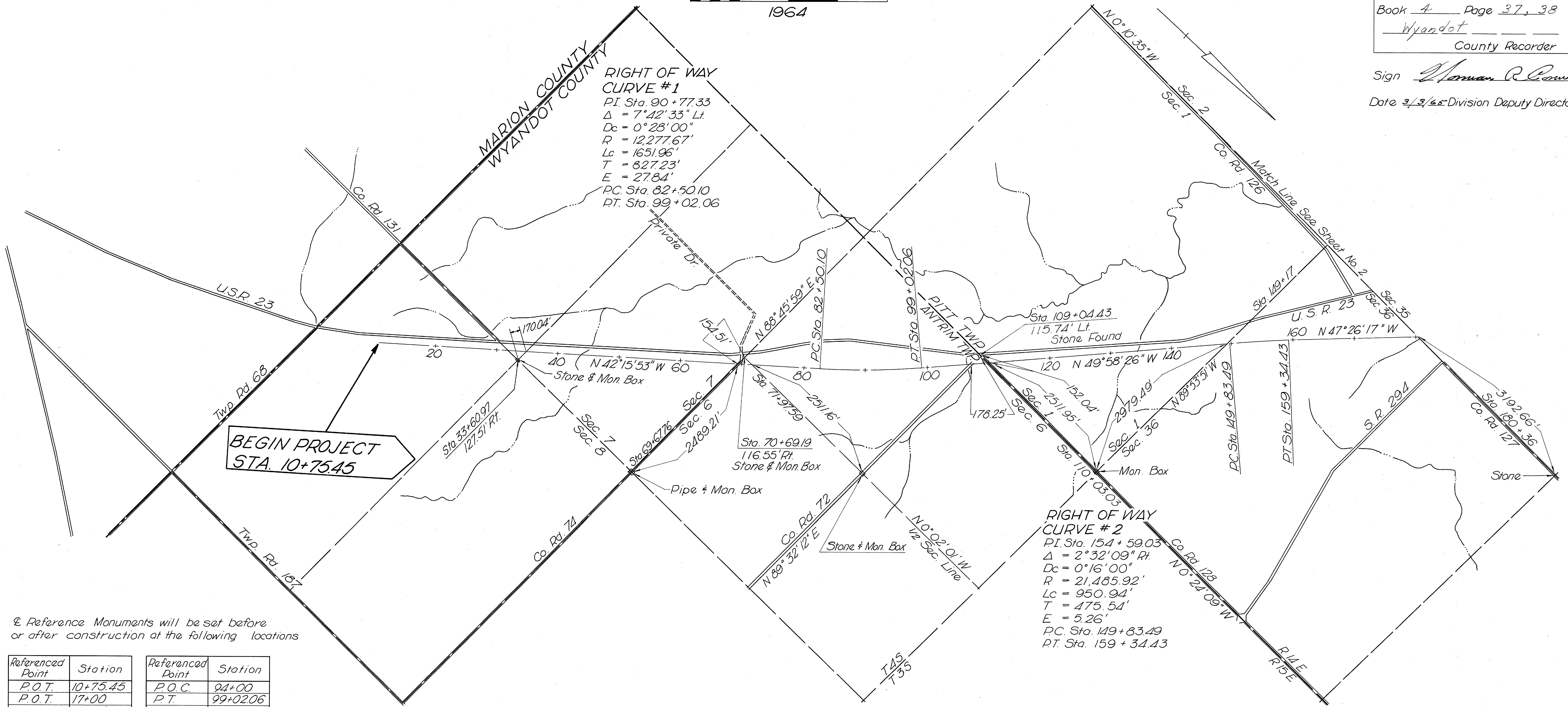
205

WYA - 23 - 020
LIMITED ACCESS

1
28

Received 3-26-1965
Recorded 3-29-1965
Book 4 Page 37, 38
Wyandot
County Recorder

Sign *Thomas R. Crow*
Date 3/3/65 Division Deputy Director



Reference Monuments will be set before or after construction at the following locations

Referenced Point	Station	Referenced Point	Station
P.O.T.	10+75.45	P.O.C.	94+00
P.O.T.	17+00	P.T.	99+02.06
P.O.T.	23+00	P.O.T.	105+00
P.O.T.	29+00	P.O.T.	111+00
127.51' Rt.	33+60.97	P.O.T.	117+00
P.O.T.	35+00	P.O.T.	123+00
P.O.T.	41+00	P.O.T.	129+00
P.O.T.	47+00	P.O.T.	135+00
P.O.T.	53+00	P.O.T.	142+00
P.O.T.	59+00	P.C.	149+83.49
P.O.T.	65+00	P.O.C.	153+00
P.O.T.	71+00	P.T.	159+34.43
P.O.T.	77+00	P.O.T.	165+00
P.C.	82+50.10	P.O.T.	171+00
P.O.C.	88+00	P.O.T.	179+00

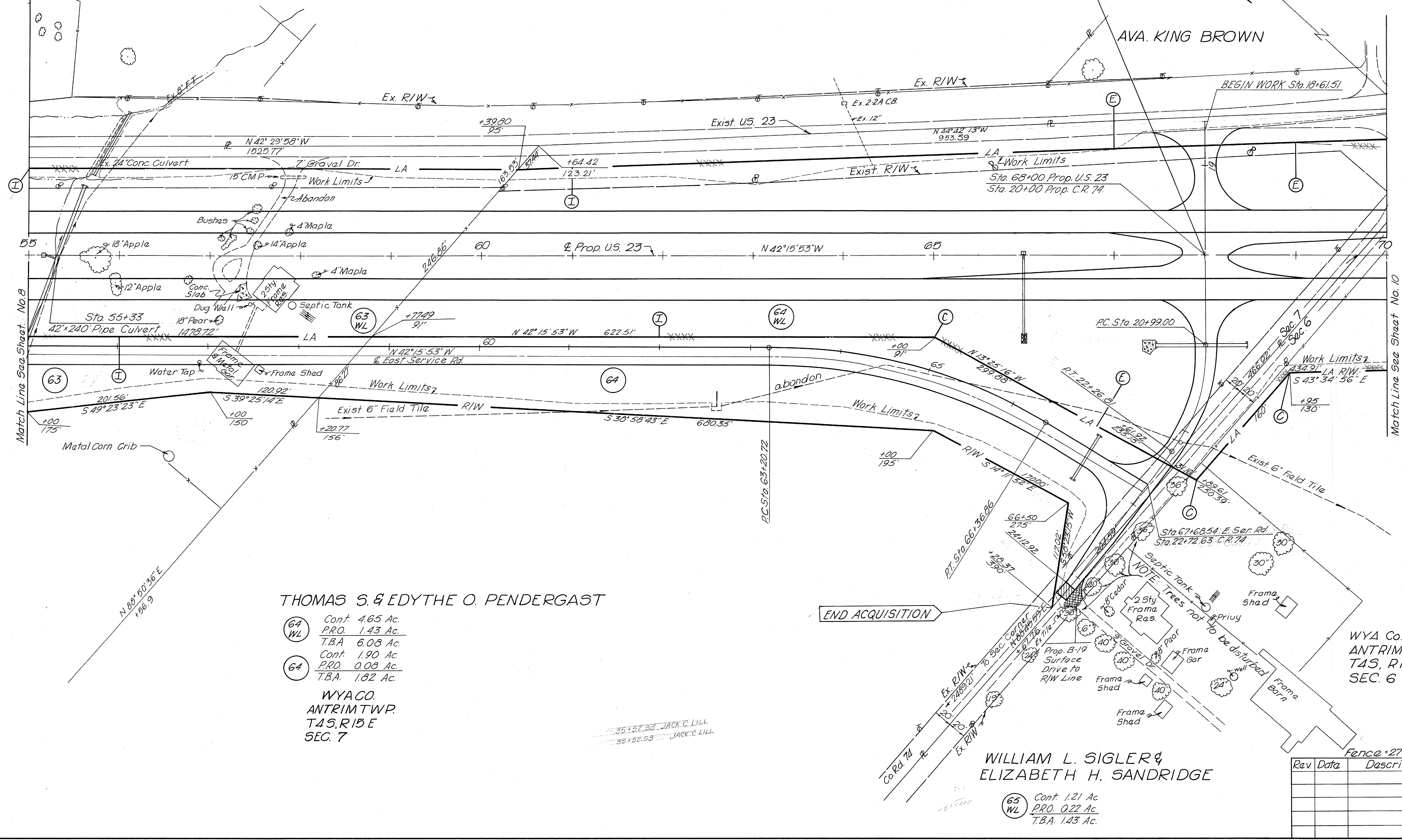
I HEREBY CERTIFY THAT THIS PLAT IS A TRUE DELINEATION OF A SURVEY MADE FOR THE OHIO DEPARTMENT OF HIGHWAYS IN 1964 BY BARRETT ASSOC. ENG'S. LTD.

Dwight D. Stucky DATE 2-26-65

ALLEN G. & MILDRED A. MYERS

AVA. KING BROWN

POINT OF ACCESS
Sta. 68+00 for
20' Co. Rd.



THOMAS S. & EDYTHE O. PENDERGAST

- (64) WL Cont. 4.65 Ac.
PRO. 1.43 Ac.
T.B.A. 6.08 Ac.
- (64) Cont. 1.90 Ac.
PRO. 0.08 Ac.
T.B.A. 1.82 Ac.

WYACO.
ANTRIM TWP.
T4S, R15E
SEC. 7

35+52.93 JACK C. LILL
35+52.93 JACK C. LILL

WILLIAM L. SIGLER &
ELIZABETH H. SANDRIDGE

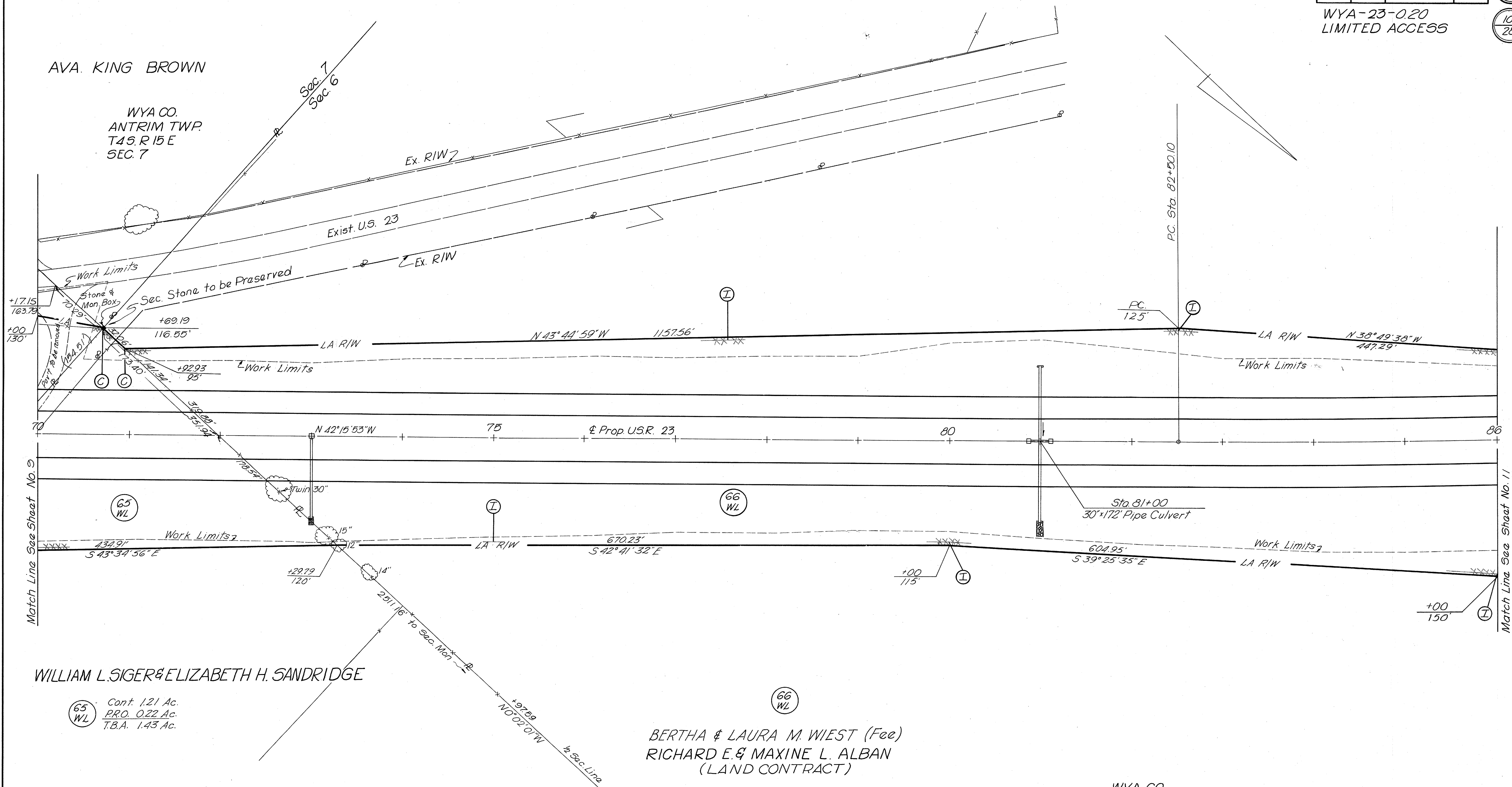
- (65) WL Cont. 1.21 Ac.
PRO. 0.22 Ac.
T.B.A. 1.43 Ac.

Fence - 2779 Lin Ft.

Rev.	Date	Description

AVA. KING BROWN

WYA CO.
ANTRIM TWP.
T4S. R15 E
SEC. 7



WILLIAM L. SIGER & ELIZABETH H. SANDRIDGE

65 WL
Cont. 1.21 Ac.
PRO. 0.22 Ac.
T.B.A. 1.43 Ac.

66 WL
BERTHA & LAURA M. WIEST (Fee)
RICHARD E. & MAXINE L. ALBAN
(LAND CONTRACT)

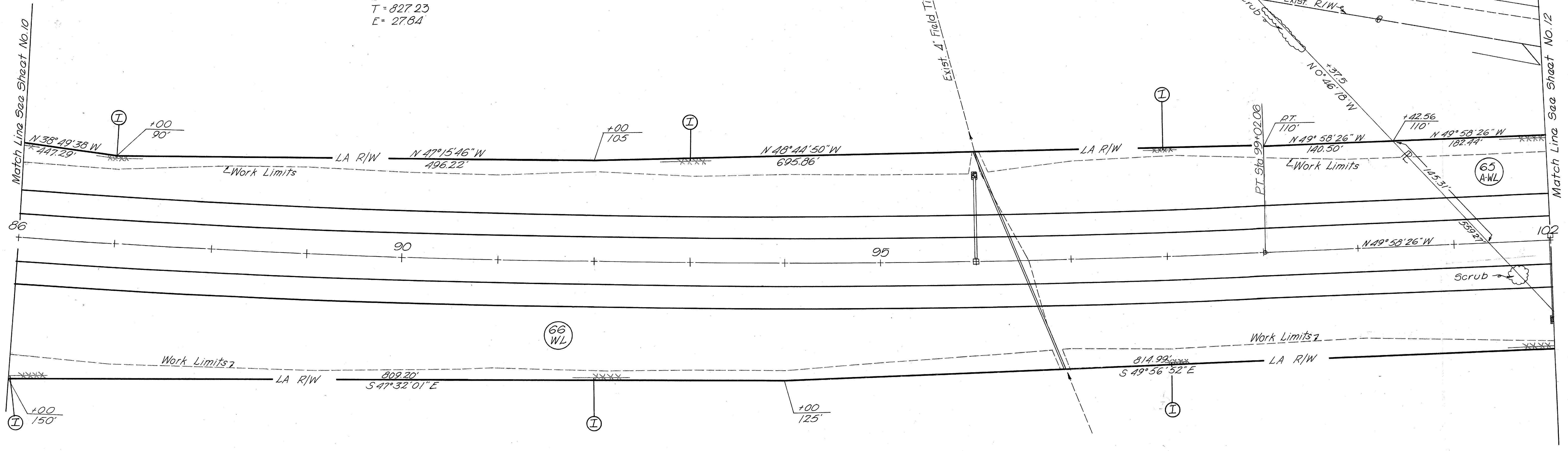
Cont. 16.18 Ac.
PRO. 0.00 Ac.
T.B.A. 16.18 Ac.

WYA CO.
ANTRIM TWP.
T4S. R15 E
SEC. 6

Fence = 3214 Lin. Ft.

Rev.	Date	Description

RIW CURVE DATA
 Prop. US.R. 23
 P.I. Sta 90+77.33
 $\Delta = 7^{\circ}42'33''$ Lt.
 $Dc = 0.28'$
 $R = 12277.67'$
 $Lc = 1651.96'$
 $T = 827.23'$
 $E = 27.64'$



BERTHA & LAURA M. WIEST (Fee)
 RICHARD E. & MAXINE L. ALBAN
 (Land Contract)

Cont. 16.18 Ac.
 PRO. 0.00 Ac.
 T.B.A. 16.18 Ac.

WYA CO.
 ANTRIM TWP.
 T4S. R15 E
 SEC. 6

Fence 3205 Lin. Ft.

Rev.	Date	Description

WILLIAM L. SIGLER &
ELIZABETH H. SANDRIDGE
Cont. 4.07 Ac
PRO 0.88 Ac
TBA 4.95 Ac

MARY ALICE HESS
& LAURA M. BURGERDERFER (Fee)
OMER W. HAWK
(Land Contract)
Cont. 13.86 Ac
PRO 1.97 Ac
TBA 15.83 Ac

WYA CO.
ANTRIM TWP.
T45 R15E
SEC. 6

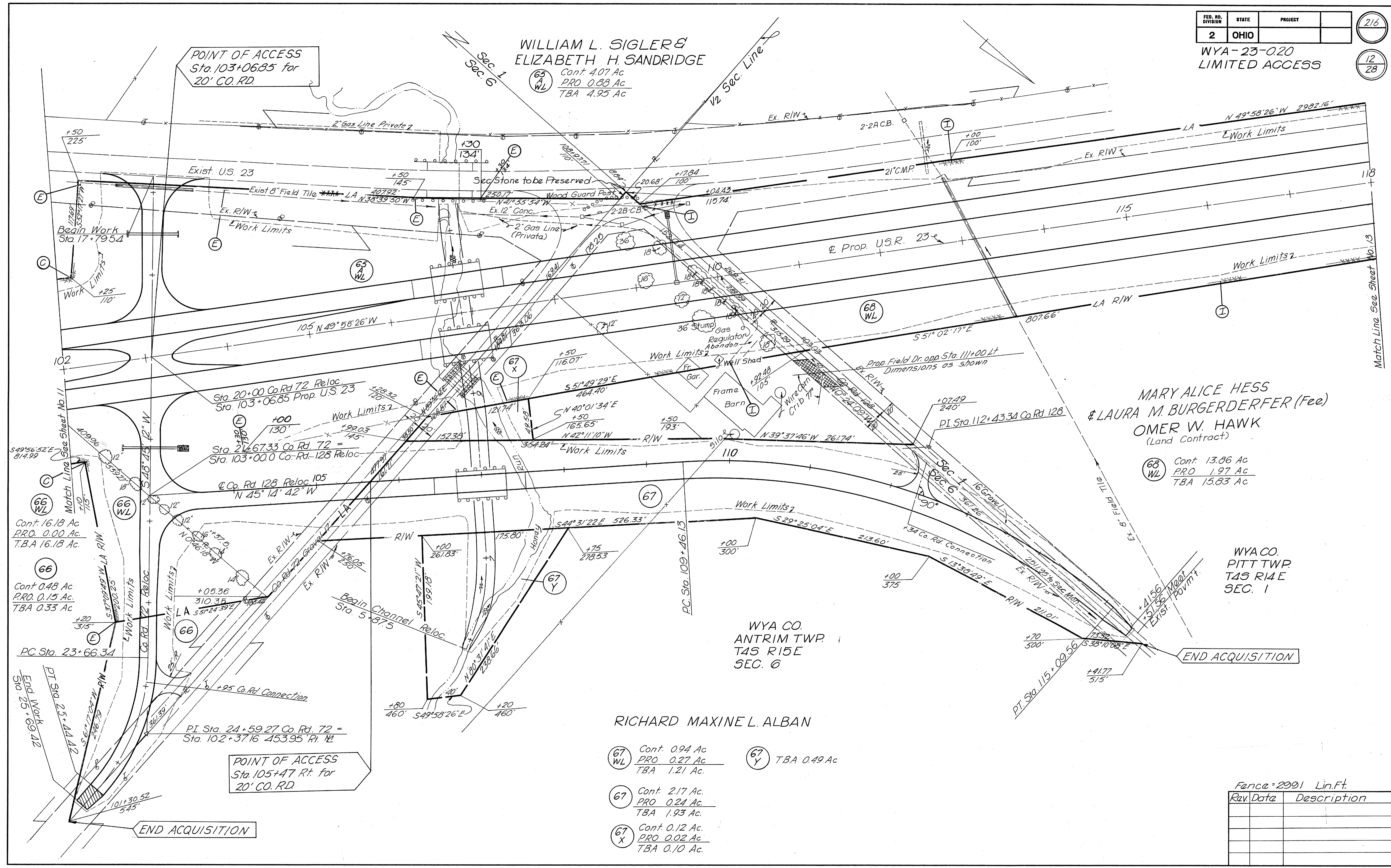
WYA CO.
PITT TWP.
T45 R14E
SEC. 1

- RICHARD MAXINE L. ALBAN
- (67 WL) Cont. 0.94 Ac
PRO 0.27 Ac
TBA 1.21 Ac
 - (67 Y) TBA 0.49 Ac
 - (67) Cont. 2.17 Ac
PRO 0.24 Ac
TBA 1.93 Ac
 - (67 X) Cont. 0.12 Ac
PRO 0.02 Ac
TBA 0.10 Ac

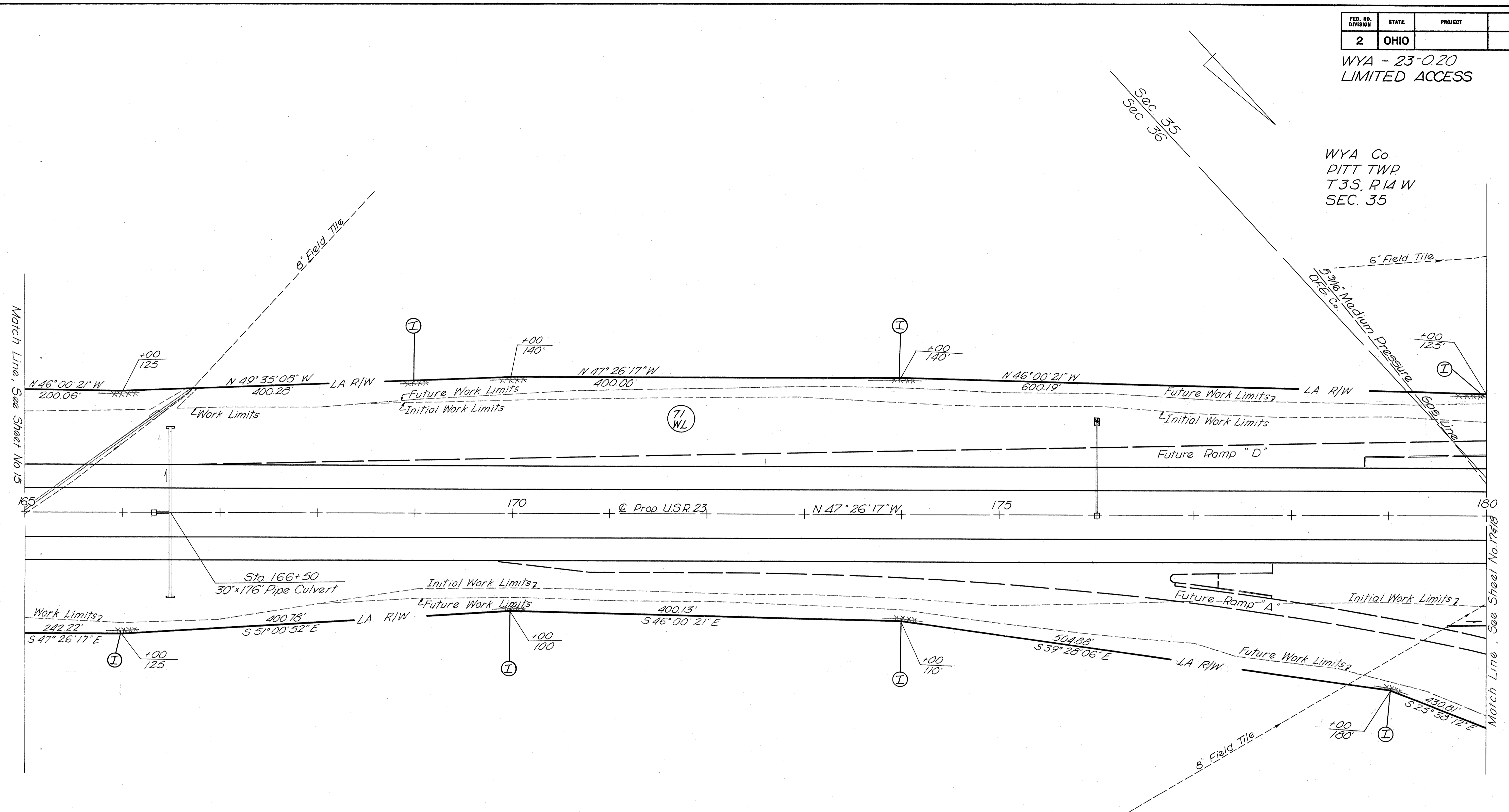
Fence = 2991 Lin.Ft.

Rev. Date	Description

RIGHT OF WAY Sta. 102+00 to Sta. 118+00



WYA Co.
PITT TWP
T3S, R14 W
SEC. 35



Match Line, See Sheet No. 15

Match Line, See Sheet No. 14B

HAROLD K. & CAROL I. TIVENAN

71
WL Cont. 21.28 Ac.
PRO. 1.12 Ac.
T.B.A. 22.40 Ac.

WYA Co.
PITT TWP
T3S, R14 E
SEC. 36

Fence = 3011 Lin. Ft.

Rev.	Date	Description

FED. RD. DIVISION	STATE	PROJECT
2	OHIO	

221

WVA - 23-020
LIMITED ACCESS

17
28

WYA Co.
PITT TWP
T3S, R14E
SEC. 35

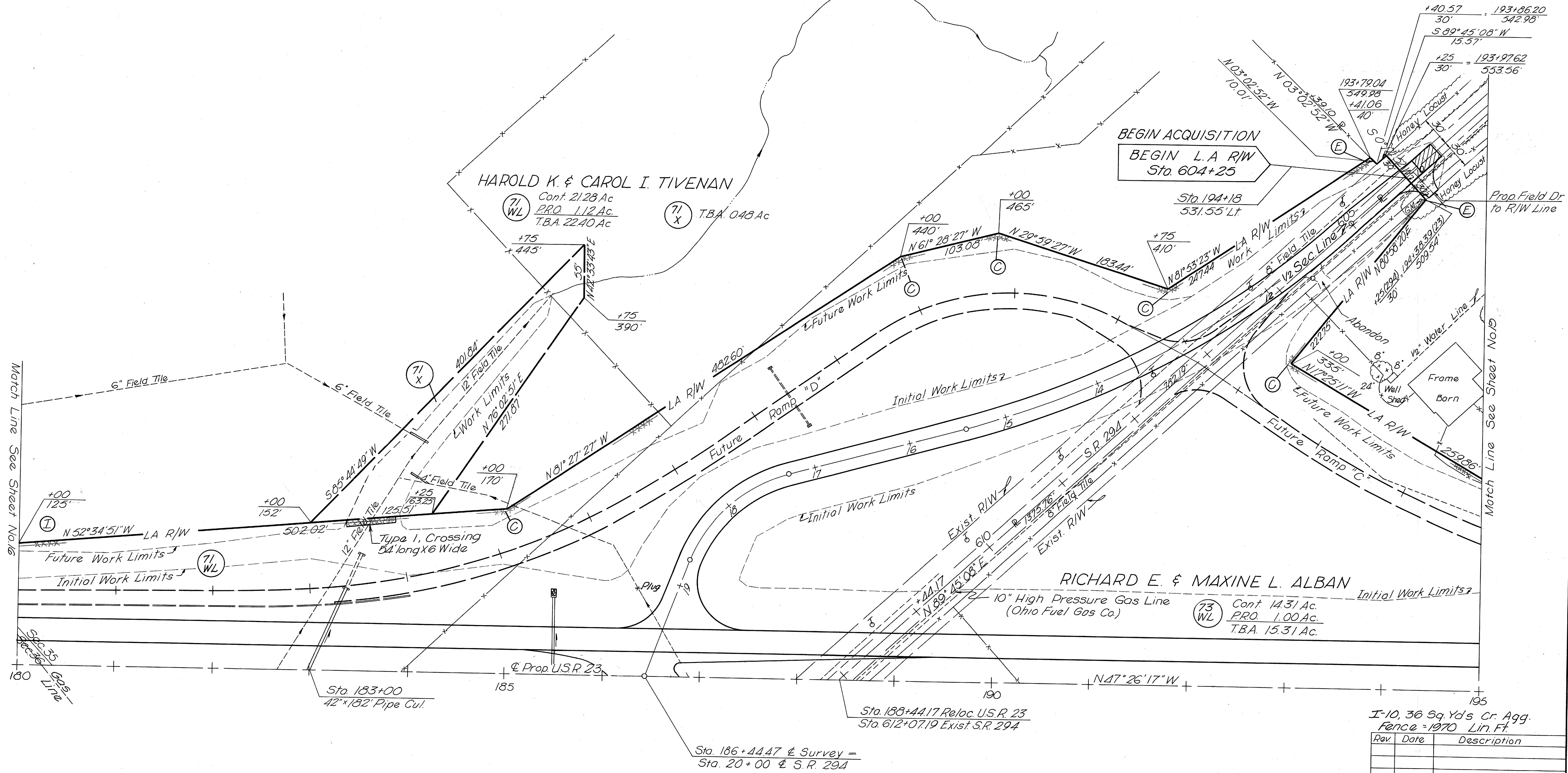
GERTRUDE HARRIS

HAROLD K. & CAROL I. TIVENAN

Cont. 21.28 Ac
PRO. 1.12 Ac
T.B.A. 22.40 Ac

T.B.A. 0.48 Ac

BEGIN ACQUISITION
BEGIN L.A. R/W
Sta. 604+25



RICHARD E. & MAXINE L. ALBAN

Cont. 14.31 Ac
PRO. 1.00 Ac
T.B.A. 15.31 Ac

I-10, 36 Sq. Yd's Cr. Agg.
Fence = 1970 Lin. Ft.

Rev	Date	Description

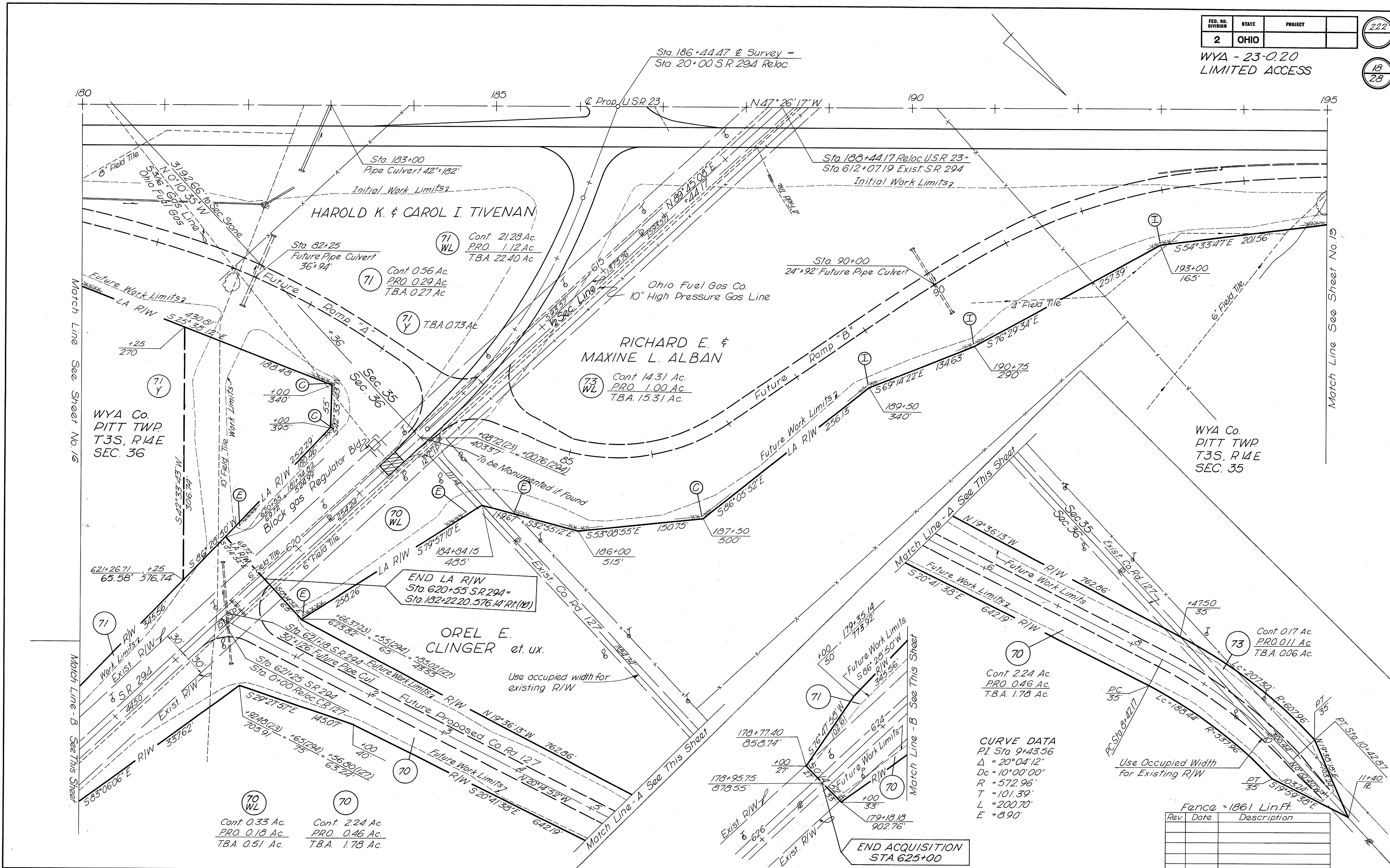
Sta. 186+44.47 & Survey =
Sta. 20+00 & S.R. 29A

Sta. 188+44.17 Reloc. U.S.R. 23
Sta. 612+07.19 Exist. S.R. 29A

Sta. 183+00
42" x 182" Pipe Cul.

Match Line See Sheet No. 6

Match Line See Sheet No. 18



Match Line - See Sheet No. 16

Match Line - See Sheet No. 19

WYA Co.
PITT TWP.
T3S, R1E
SEC. 36

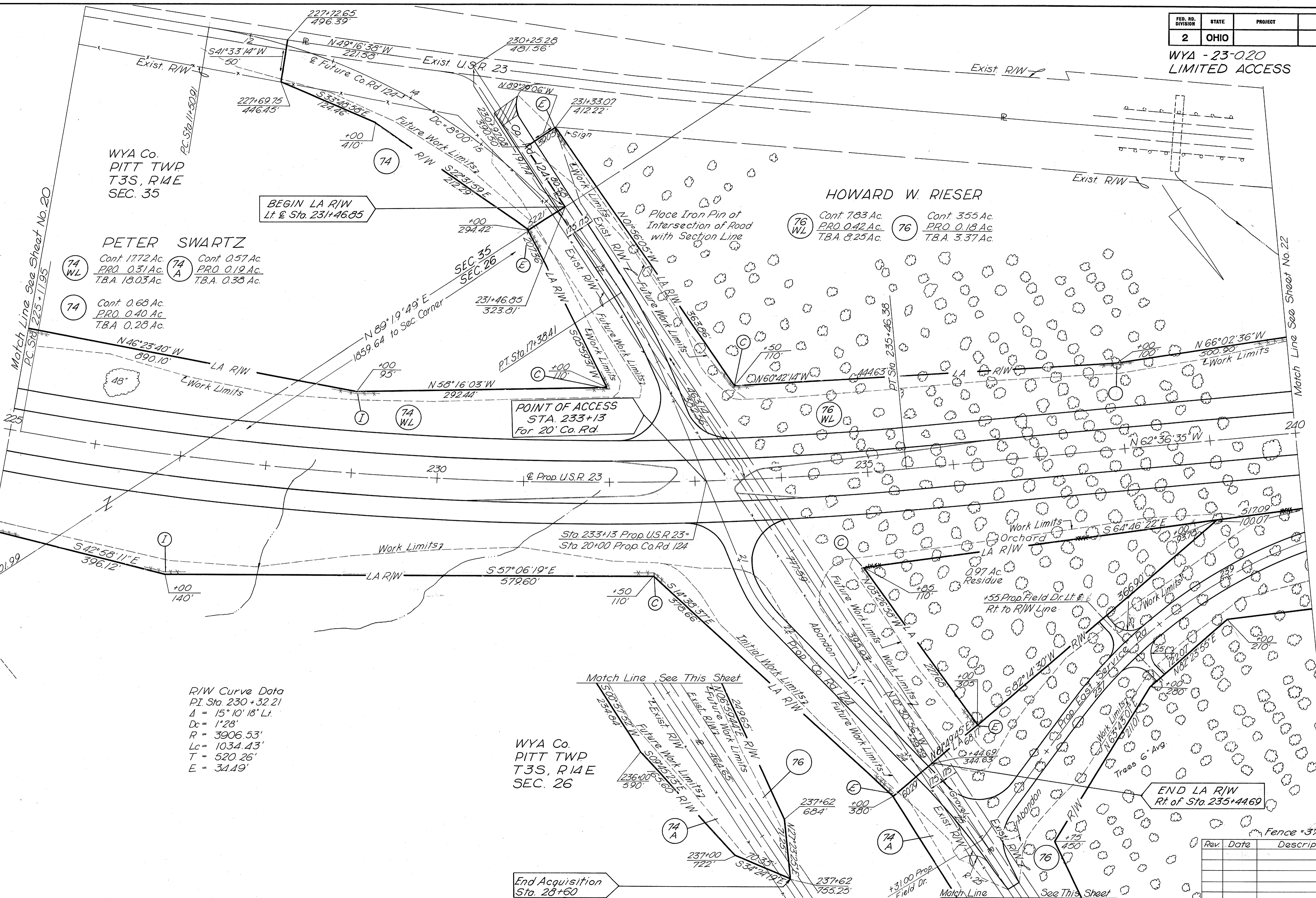
WYA Co.
PITT TWP.
T3S, R1E
SEC. 35

OREL E.
CLINGER et ux.

CURVE DATA
 PI Sta 9+43.56
 $\Delta = 20^{\circ}04'12''$
 $Dc = 10^{\circ}00'00''$
 $R = 572.96'$
 $T = 101.39'$
 $L = 200.70'$
 $E = 8.90'$

Change Log

Rev.	Date	Description



WYA Co.
PITT TWP
T3S, R14E
SEC. 35

PETER SWARTZ
 (74 WL) Cont. 1772 Ac.
 PRO. 0.31 Ac.
 T.B.A. 18.03 Ac.
 (74 A) Cont. 0.57 Ac.
 PRO. 0.19 Ac.
 T.B.A. 0.38 Ac.
 (74) Cont. 0.68 Ac.
 PRO. 0.40 Ac.
 T.B.A. 0.28 Ac.

HOWARD W. RIESER
 (76 WL) Cont. 783 Ac.
 PRO. 0.42 Ac.
 T.B.A. 8.25 Ac.
 (76) Cont. 355 Ac.
 PRO. 0.18 Ac.
 T.B.A. 3.37 Ac.

R/W Curve Data
 PI. Sta. 230+32.21
 Δ = 15° 10' 18" Lt.
 Dc = 1'28"
 R = 3906.53'
 Lc = 1034.43'
 T = 520.26'
 E = 31.19'

WYA Co.
PITT TWP
T3S, R14E
SEC. 26

END LA R/W
Rt. of Sta. 235+44.69

End Acquisition
Sta. 28+60

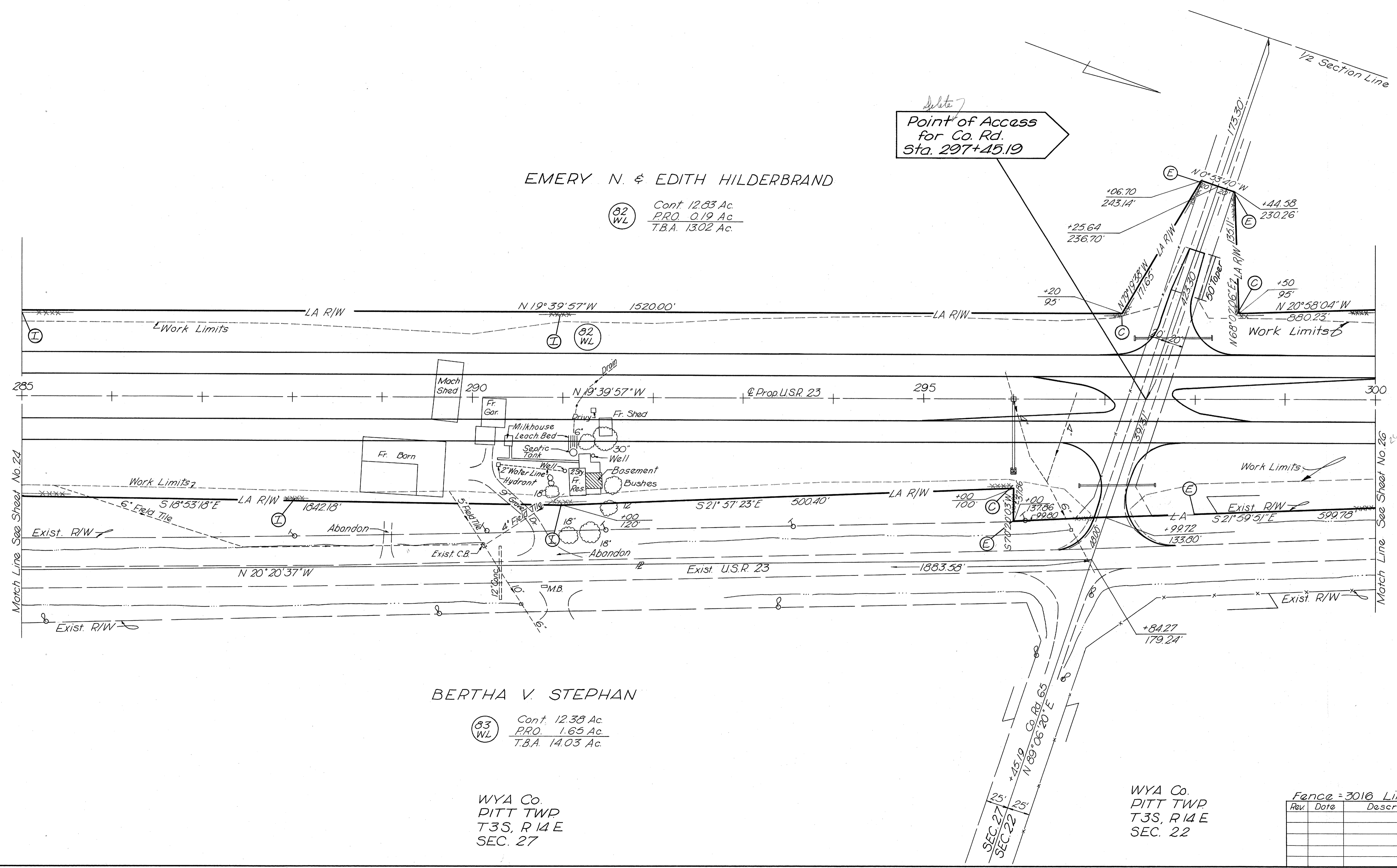
Fence = 3788 Lin. Ft.

Rev.	Date	Description

EMERY N. & EDITH HILDERBRAND

(82 WL) Cont. 12.83 Ac.
PRO. 0.19 Ac.
T.B.A. 13.02 Ac.

Point of Access
for Co. Rd.
Sta. 297+45.19



BERTHA V. STEPHAN

(83 WL) Cont. 12.38 Ac.
PRO. 1.65 Ac.
T.B.A. 14.03 Ac.

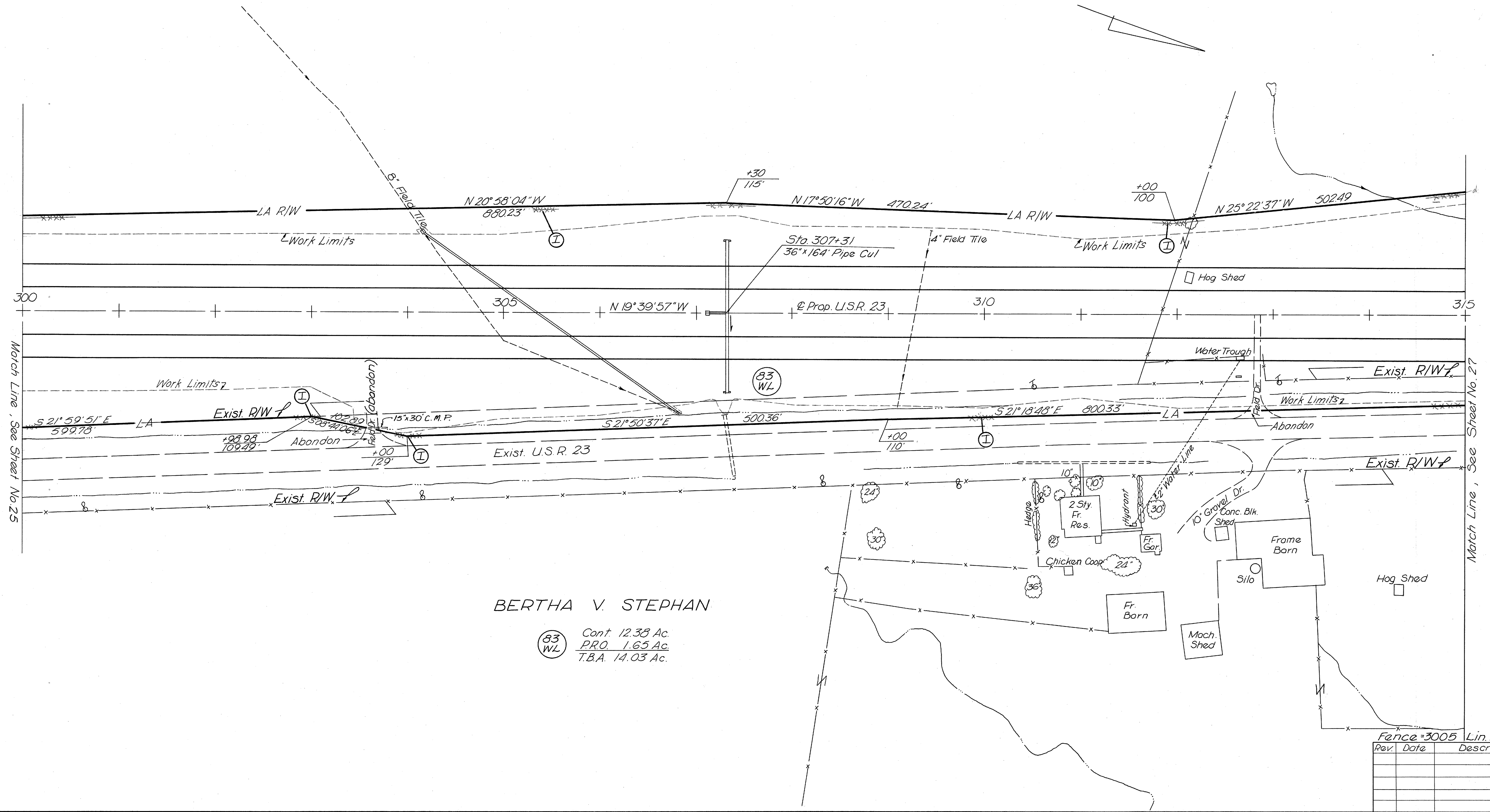
WYA Co.
PITT TWP
T3S, R14E
SEC. 27

WYA Co.
PITT TWP
T3S, R14E
SEC. 22

Fence = 3016 Lin. Ft.

Rev.	Date	Description

WYA Co.
PITT TWP
T3S, T14E
SEC. 22



BERTHA V. STEPHAN
 83 WL Cont. 12.38 Ac.
 PRO. 1.65 Ac.
 T.B.A. 14.03 Ac.

Fence = 3005 Lin. Ft.

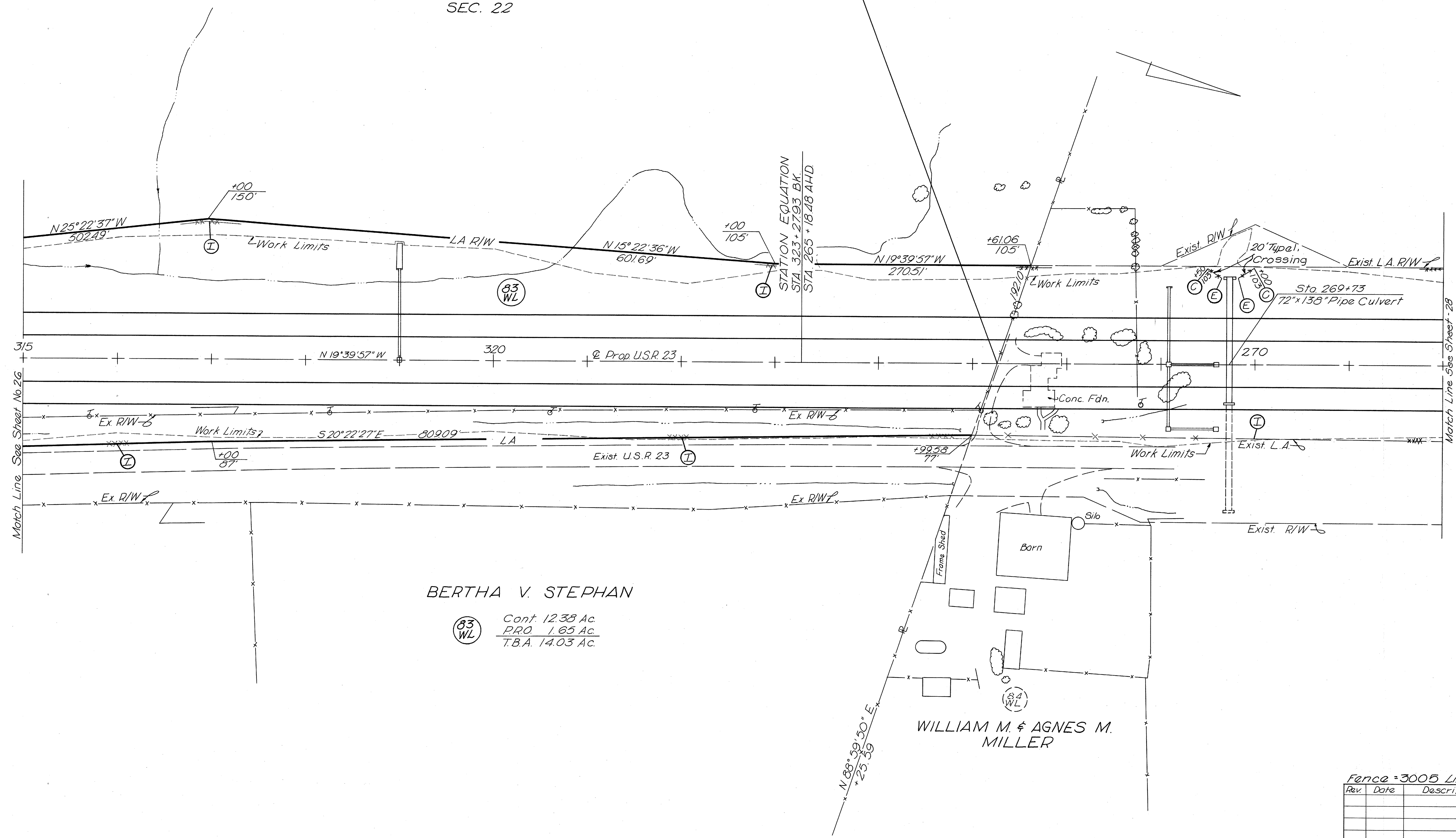
Rev.	Date	Description

WYA - 23 - 0.20
LIMITED ACCESS

WYA Co.
PITT TWP
T3S, R14E
SEC. 22

END ACQUISITION
WYA - 23 - 0.20
STA. 267+25.59 Ah.

BEGIN ACQUISITION
WYA - 23 - 6.67
STA. 267+25.59



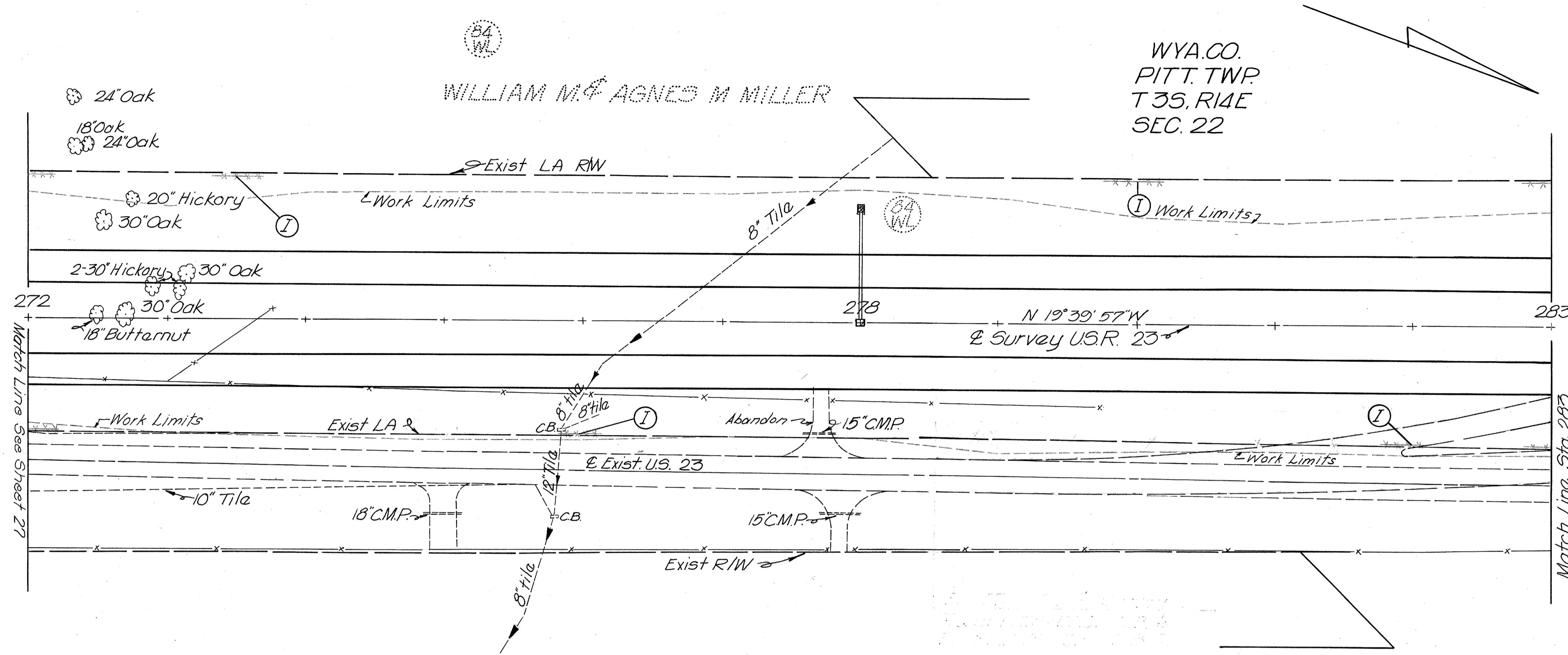
BERTHA V. STEPHAN

(83) WL
Cont. 12.38 Ac.
PRO. 1.65 Ac.
T.B.A. 14.03 Ac.

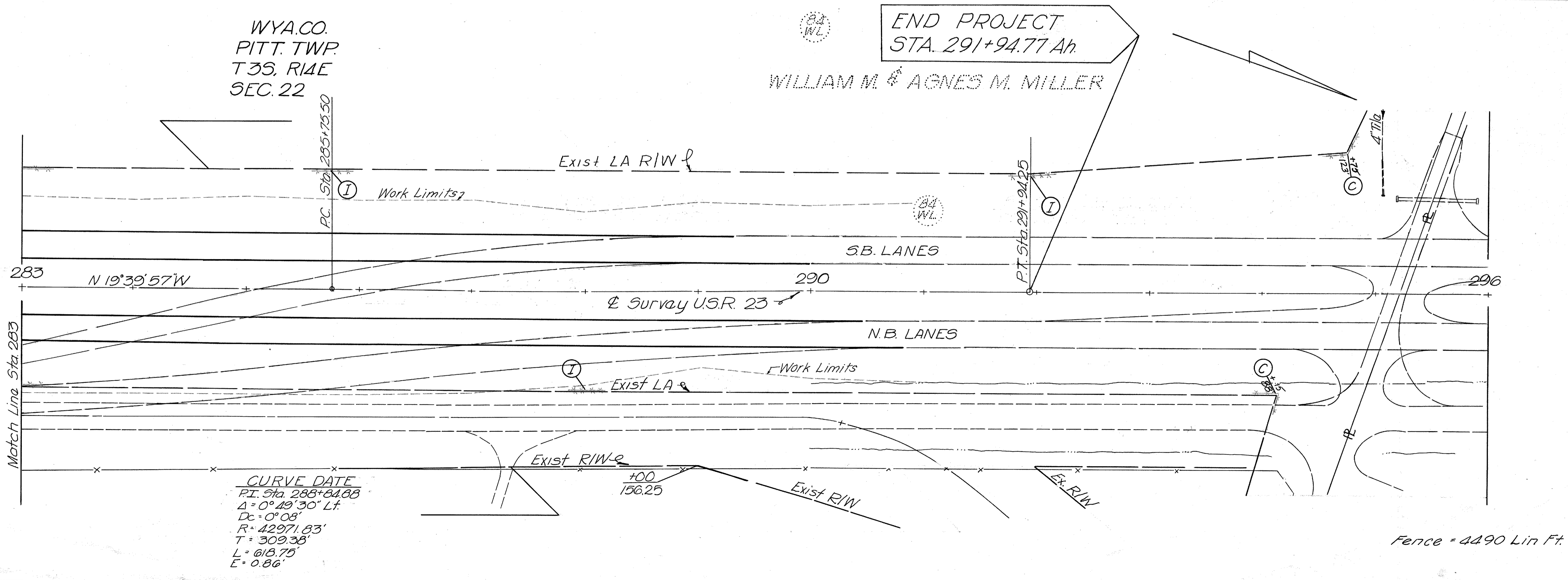
WILLIAM M. & AGNES M. MILLER

Fence = 3005 Lin. Ft.

Rev.	Date	Description



Rev.	Date	Description



RIGHT OF WAY Sta. 272+00 to Sta. 296+00