

**DORR STREET - LUC-246-0.00
ROADWAY RESURFACING
FROM REYNOLDS RD. TO DENNIS DITCH
CITY OF TOLEDO, LUCAS COUNTY, OHIO**

INDEX OF SHEETS

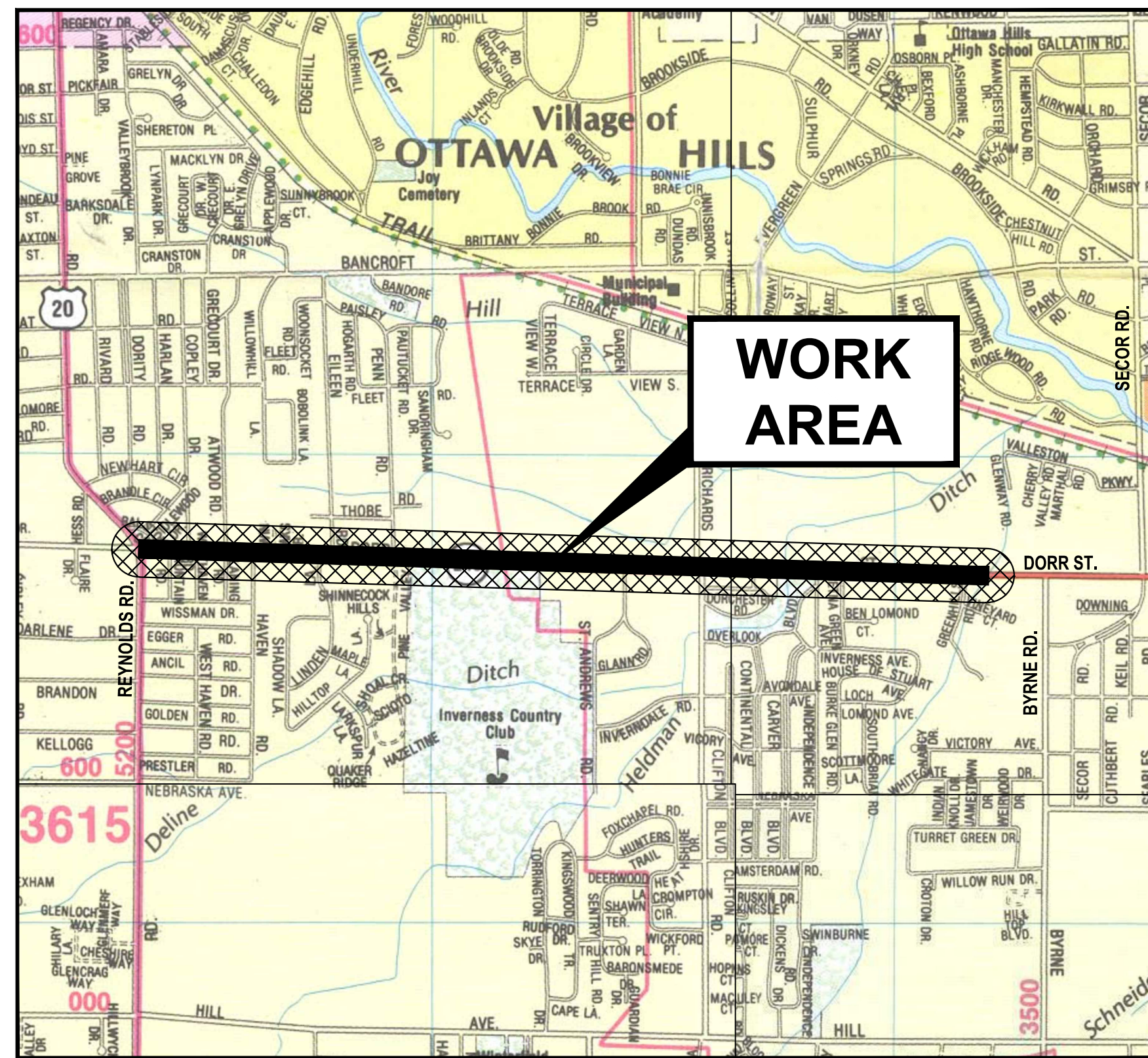
TITLE SHEET	1
CENTERLINE MAP	2-13
GENERAL NOTES	14
GENERAL SUMMARY	15
TYPICAL SECTION	16
DRIVE TABLE/MISCELLANEOUS DETAILS	17
PLAN	18-29
PAVEMENT MARKINGS	M1-M10
STORM WATER POLLUTION PROTECTION PLAN	S1-S9

PROJECT DESCRIPTION

THIS PROJECT WILL RESURFACE 1.9 MILES OF PAVEMENT ON DORR STREET, FROM REYNOLDS ROAD TO DENNIS DITCH. THIS INCLUDES REMOVING AND REPLACING THE WEARING COURSE OF ASPHALT AS WELL AS THE PEDESTRIAN RAMPS. NEW WALK WILL BE ADDED ON BOTH SIDES OF THE ROAD.

NOTES

THE 2019 CONSTRUCTION MATERIAL STANDARD SPECIFICATIONS OF THE STATE OF OHIO, DEPARTMENT OF TRANSPORTATION INCLUDING CHANGES AND SUPPLEMENTAL SPECIFICATIONS LISTED IN THE PROPOSAL, SHALL GOVERN THIS IMPROVEMENT.



LOCATION MAP
NOT TO SCALE

DESIGN DESIGNATION

CURRENT ADT (2019)	21500
DESIGN YEAR ADT (2039)	23750
DESIGN HOURLY VOLUME	2200
DIRECTIONAL DISTRIBUTION54%
TRUCKS (24 HOUR B&C)	4%
DESIGN SPEED45 MPH
LEGAL SPEED	45 MPH
DESIGN FUNCTIONAL CLASSIFICATION	URBAN PRINCIPAL ARTERIAL

DESIGN EXCEPTIONS

NONE REQUIRED

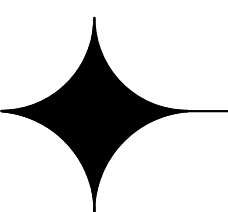
UNDERGROUND UTILITIES

TWO WORKING DAYS BEFORE YOU DIG
CALL 1-800-362-2764 (TOLL FREE)
OHIO UTILITIES PROTECTION SERVICE

NON MEMBERS
MUST BE CALLED DIRECTLY

OHIO OIL & GAS PRODUCERS
UNDERGROUND PROTECTION SERVICE
WWW.OGPUPS.COM 1-800-925-0988

PLANS PREPARED BY:
CITY OF TOLEDO OHIO
DEPARTMENT OF PUBLIC UTILITIES
DIVISION OF ENGINEERING SERVICES
600 JEFFERSON AVE, SUITE 300



Survey Control System used for this project.
Horizontal Control: NAD 83 before HARN Shift of 1995.
Vertical Control: NAVD 88
Survey Book Number same as Job Number.

LEGEND

EXISTING	PROPOSED
MHSAN SANITARY SEWER	MH PIPE
MHST STORM SEWER	R/W RIGHT-OF-WAY
MHW WATERLINE	CURB REMOVED
MHE ELECTRICAL	HYDRANT
MHTE TELEPHONE	STRUCTURES, ADJUSTED OR RECONSTRUCTED
GAS LINES	STRUCTURES, NEW
CABLE	SURFACE FLOW DIRECTION
FIBER-OPTIC	TREES REMOVED
CENTERLINE	CONCRETE DRIVE & WALK
R/W RIGHT-OF-WAY	PAVEMENT/WALK REMOVED
P/L PROPERTY LINE	ASPHALT REMOVED
CURB	DRIVE REMOVED
FENCE	FULL DEPTH PAVEMENT REMOVAL AND RIGID REPLACEMENT
WATER VALVE	CONDUIT (SEWER PIPE)
GAS VALVE	DEFLECTION
HYDRANT	RIGHT-OF-WAY TAKE, TEMPORARY
UTILITY POLE	RIGHT-OF-WAY TAKE, PERMANENT
GUY WIRE	
PEDESTRIAN RAMP	
TREES (CONIF., DECID.)	
SURVEY MONUMENTS	
UNSURVEYED (UNSUR)	

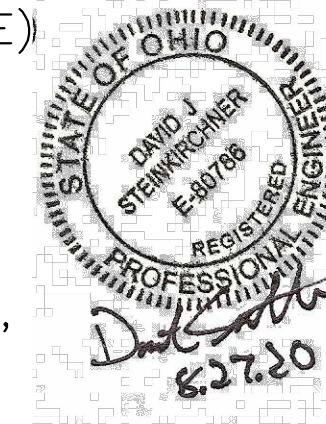
APPROVALS

APPROVED: DATE: 8/29/20
EDWARD A. MOORE
DIRECTOR, DEPARTMENT OF PUBLIC UTILITIES

APPROVED: DATE: 8/27/20
CHRISTY SONCRANT, P.E.
ADMINISTRATOR, ENGINEERING SERVICES

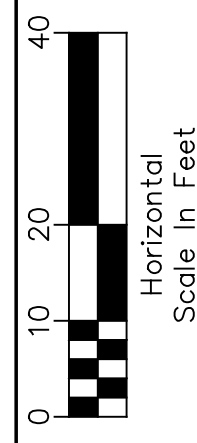
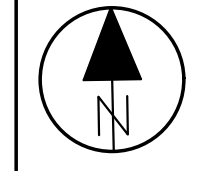
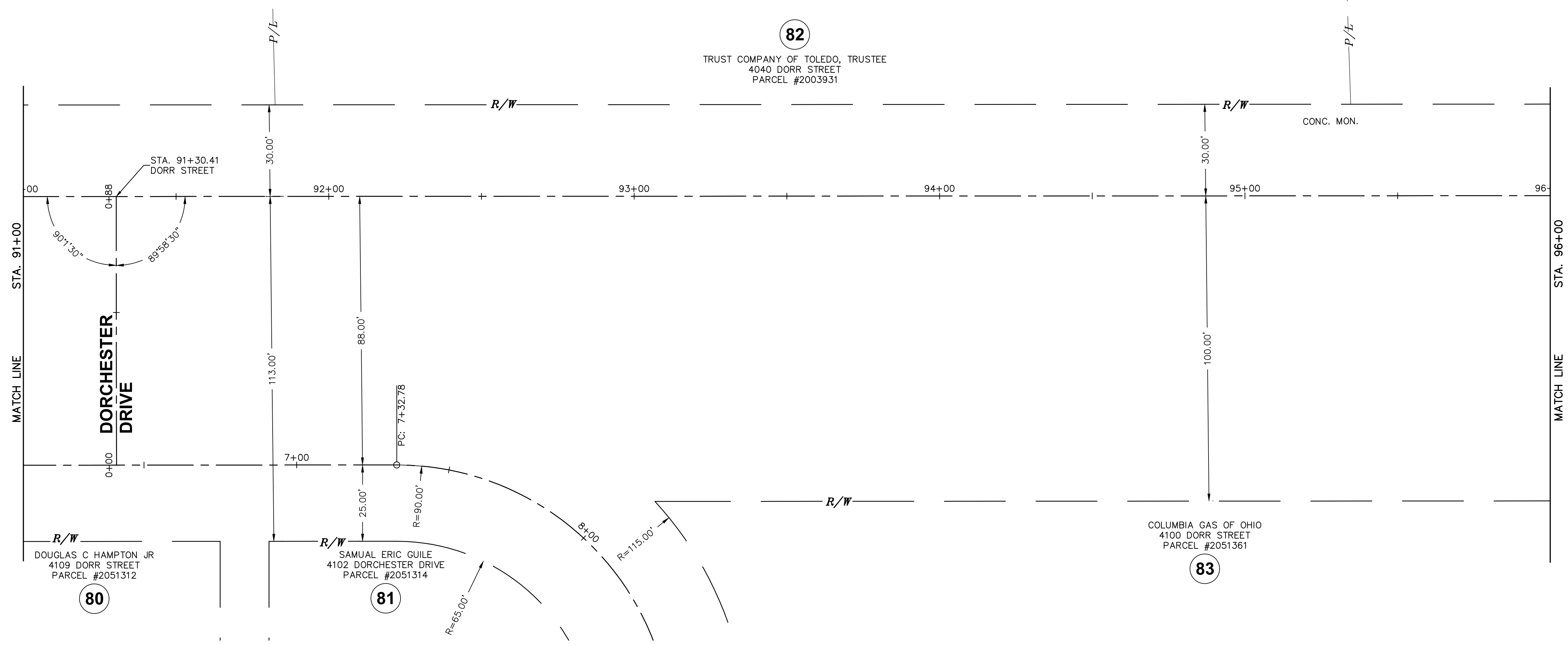
APPROVED: DATE: 8/27/20
TIMOTHY D. GROSJEAN, P.E.
SENIOR TRANSPORTATION ENGINEER, ENGINEERING SERVICES

APPROVED: DATE: 8/27/20
DAVID STEINKIRCHNER, P.E.
DESIGN ENGINEER, ENGINEERING SERVICES



Design Constructed:	Yes <input type="checkbox"/> No <input type="checkbox"/>	Book	Page
Construction Completion Date:		Record Drawing Date:	

FEDERAL PROJECT NO. **E190688**
PID NO. **108794**
CITY PROJECT NO. **19103**
RAILROAD INVOLVEMENT **-**
CITY PROJECT NAME **DORR STREET**

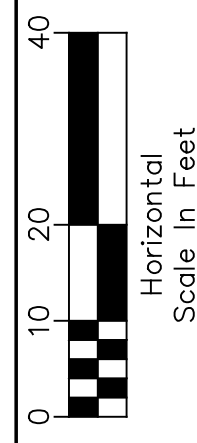
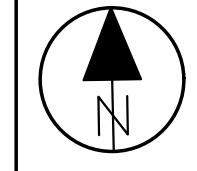
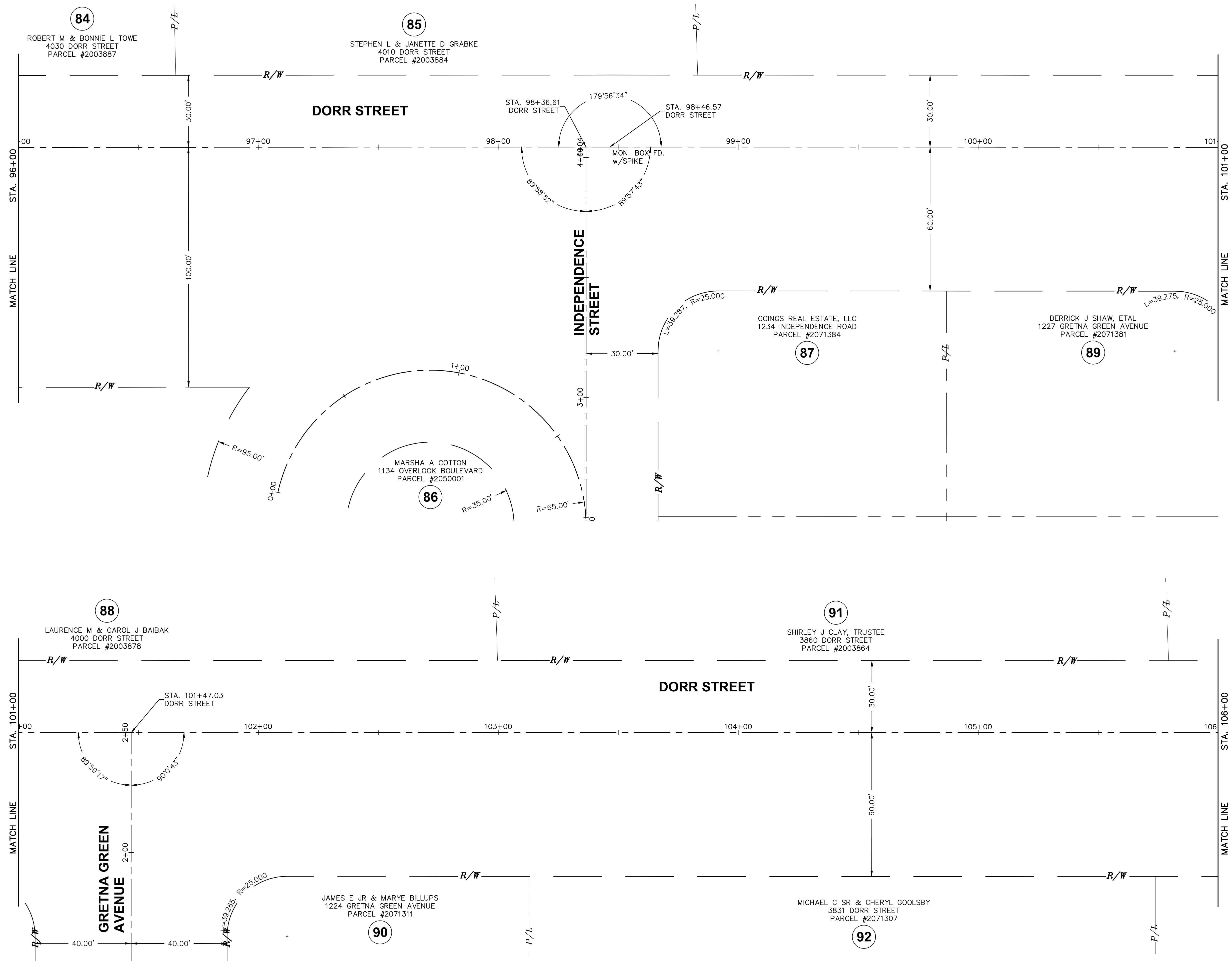


Calculated: .
Checked: .

CENTERLINE MAP - 91+00 TO STA. 96+00

**DORR STREET
ROADWAY RESURFACING
RYNOLDS RD. TO DENNIS DITCH**

X:\19000-19999\19103\DWG\19103-CENTERLINE MAP.dwg, 11, 8/27/2020 9:40:35 AM, sweeneyaj



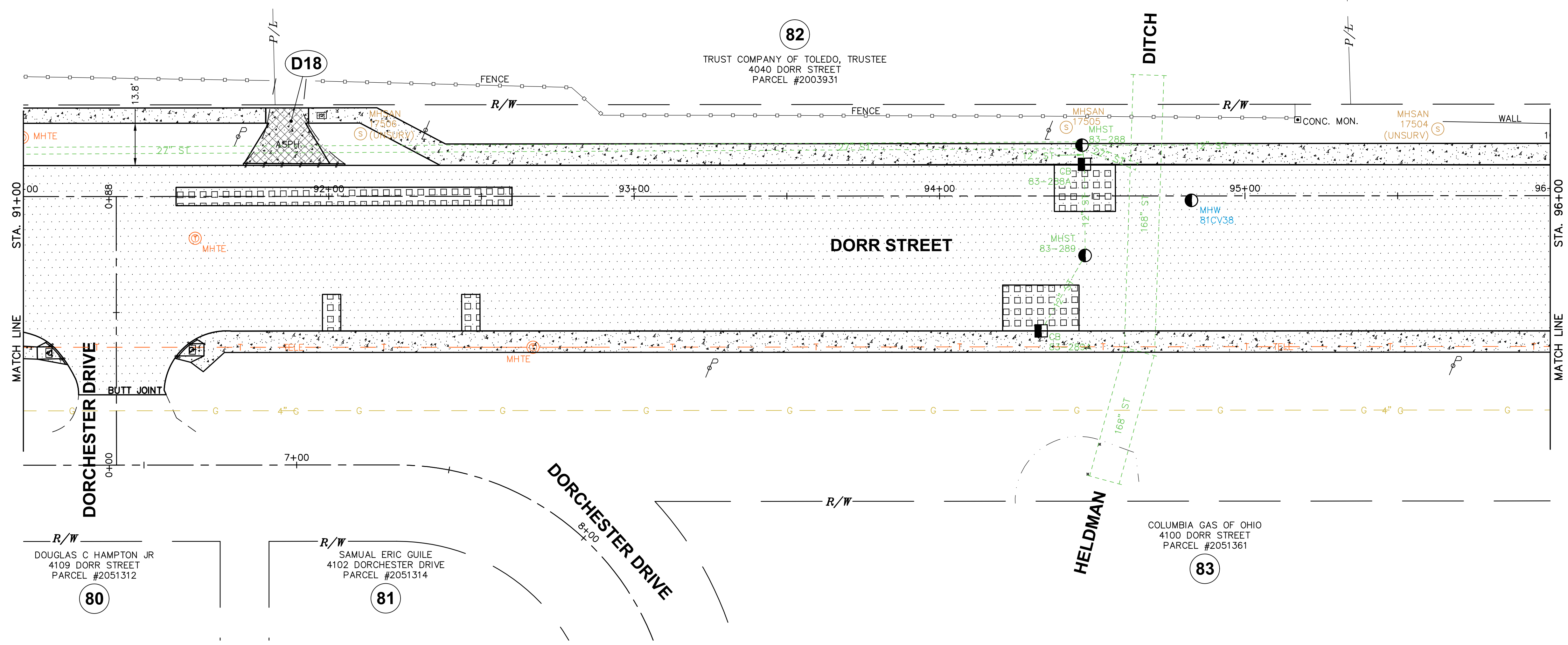
Calculated: .
Checked: .

CENTERLINE MAP - STA. 96+00 TO STA. 106+00

DORR STREET
ROADWAY RESURFACING
RYNOLDS RD. TO DENNIS DITCH

11
29

X:\19000-19999\19103\DWG\19103-PLAN-2a.dwg, 26, 8/27/2020 12:56:08 PM, sweeneylj



Calculated: .
Checked: .

Horizontal Scale In Feet
0 10 20 40

PLAN SHEET - STA. 91+00 TO STA. 96+00

DORR STREET
ROADWAY RESURFACING
REYNOLDS RD. TO DENNIS DITCH