

3142

MICROFILMED
OCT 1986
15

WILSON
SEP 17
APP'D

Sheet No. 314, 319, 320, 330, 335, 336,
340, 345, 349, 350, 351, 353, 369
& 385 revised 10-23-70 EBL
Sheet No. 390 revised 11-16-70 EBL
Sheet No. 367 revised 12-11-70 EBL
Sheet No. 445 revised 3-26-71 EBL
Sheet No. 317, 319, 348 Revised by G.F.U.

STATE OF OHIO
DEPARTMENT OF HIGHWAYS

LUC 75-4.54
LUCAS COUNTY
CITY OF TOLEDO

TOLEDO EXPRESSWAY SYSTEM - PART 33

MANHATTAN EXPRESSWAY
OTTAWA INTERCHANGE TO DREXEL DRIVE

FED. RD. DIVISION	STATE	FED. AID PROJ. NO.	1
2	OHIO	1-75-6(42)204	478

LUCAS COUNTY
CITY OF TOLEDO
TOLEDO EXPRESSWAY SYSTEM
EXPRESSWAY - PART 33
LUC 75-4.54

1-75-6(42)204
LIMITED ACCESS

1969 SPECIFICATIONS

THIS IMPROVEMENT IS ESPECIALLY DESIGNED FOR THROUGH TRAFFIC AND HAS BEEN DECLARED A LIMITED ACCESS HIGHWAY OR FREEWAY BY ACTION OF THE DIRECTOR OF HIGHWAYS IN ACCORDANCE WITH THE PROVISIONS OF SECTION 5511.02 OF THE REVISED CODE OF OHIO.

THE STANDARD SPECIFICATIONS OF THE STATE OF OHIO DEPARTMENT OF HIGHWAYS, INCLUDING CHANGES AND SUPPLEMENTAL SPECIFICATIONS LISTED IN THE PROPOSAL SHALL GOVERN THIS IMPROVEMENT.

THE RIGHT OF WAY FOR THIS IMPROVEMENT WILL BE PROVIDED BY THE STATE OF OHIO.

I HEREBY APPROVE THESE PLANS AND DECLARE THAT THE MAKING OF THIS IMPROVEMENT WILL NOT REQUIRE THE CLOSING TO TRAFFIC OF THE HIGHWAY AND THAT PROVISIONS FOR THE MAINTENANCE AND SAFETY OF THE TRAFFIC WILL BE AS SET FORTH IN THE PLANS AND ESTIMATE.

CONVENTIONAL SIGNS

- CENTER LINE
- FENCE LINE
- GUARD RAIL
- POWER POLE
- TELEPHONE POLE
- TREES OR STUMPS
- RIGHT OF WAY - LIMITED ACCESS LA&R/W-
- RIGHT OF WAY - NON LIMITED ACCESS R/W-
- RIGHT OF WAY - LIMITED ACCESS ONLY LA

INDEX OF SHEETS

1 TITLE SHEET	110-139 SEWER PROFILES
2 SCHEMATIC PLAN & DESIGN DESIGNATION	140-141 UNDERDRAINS
3-5 GENERAL NOTES	142 EXISTING DRAINAGE STRUCTURES
6-9 SUMMARY OF QUANTITIES	143-158 DRAINAGE DETAILS
10-25 QUANTITY CALCULATIONS	159 WATERSHED AREAS
26-34 TYPICAL SECTIONS	160-195, 195A, 196-217 TRAFFIC CONTROL PLANS
35 GEOMETRIC PLAN	218-246 LIGHTING PLANS
36-37 GEOMETRIC DATA	246-257 RIGHT OF WAY AND FENCING
38 TRAVERSE TIES	258 CROSS SECTION LAYOUT
39 REFERENCE TIES	259-313 CROSS SECTIONS
40-48 SEQUENCE OF CONSTRUCTION	314 BRIDGES - GENERAL NOTES
49-53 PAVEMENT PLANS	315-328 BRIDGE NO. LUC 75-0471
54-63, 63A, 63B APPROACH SLAB AND GUARD RAIL DETAILS	329-353 BRIDGE NO. LUC 75-0483
64-68 INTERSECTION DETAILS	354-365 BRIDGE NO. LUC 75-0486
69-71 DRIVEWAY DETAILS	366-377 BRIDGE NO. LUC 75-0489
72-76 GRADING AND SLOPE PROTECTION	378-388 BRIDGE NO. LUC 75-0491
77-95 PROFILES	389-400 BRIDGE NO. LUC 75-0492
96-100 EXISTING UTILITIES	401-409 BRIDGE NO. LUC 75-0503
101-104 PAVEMENT REMOVAL	410-425 BRIDGE NO. LUC 75-0502
105-109 DRAINAGE PLANS	426-434 BRIDGE NO. LUC 75-0520
109A-109H WATER MAIN RELOCATION	435-442 BRIDGE NO. LUC 75-0519
	443-459 BRIDGE NO. LUC 75-0531
	460-463 COMMON DETAILS
	464-478 RETAINING WALLS NOS. 1-5

Sheet No 247 not used

LINE DATA

NORMAL PARTICIPATION	
BEGIN PROJECT	STA. 247+61.68 NORTHBOUND LANE
END PROJECT	STA. 296+35.40 NORTHBOUND LANE
NET LENGTH OF PROJECT	4873.72 FT. OR 0.923 MILE
BEGIN WORK	STA. 247+61.68 NORTHBOUND LANE
END WORK	STA. 296+35.40 NORTHBOUND LANE
LENGTH OF WORK EXPRESSWAY	4873.72 FT.
ADD FROM SHEET 2	3176.91 FT
LENGTH OF WORK	8050.63 LF or 1.524 Mi.
SPECIAL STATE-CITY PARTICIPATION	
ADD FROM SHEET 2	1758.91 LF
LENGTH OF WORK	1758.91 LF or 0.333 Mi.
TOTAL LENGTH OF WORK = 9809.54 or 1.857 Mi.	

PREPARED AND RECOMMENDED BY

HOWARD, NEEDLES, TAMMEN & BERGENDOFF
CONSULTING ENGINEERS
KANSAS CITY CLEVELAND NEW YORK

Carl L. Erb

H.G. SOURS
ASSOCIATE
COLUMBUS

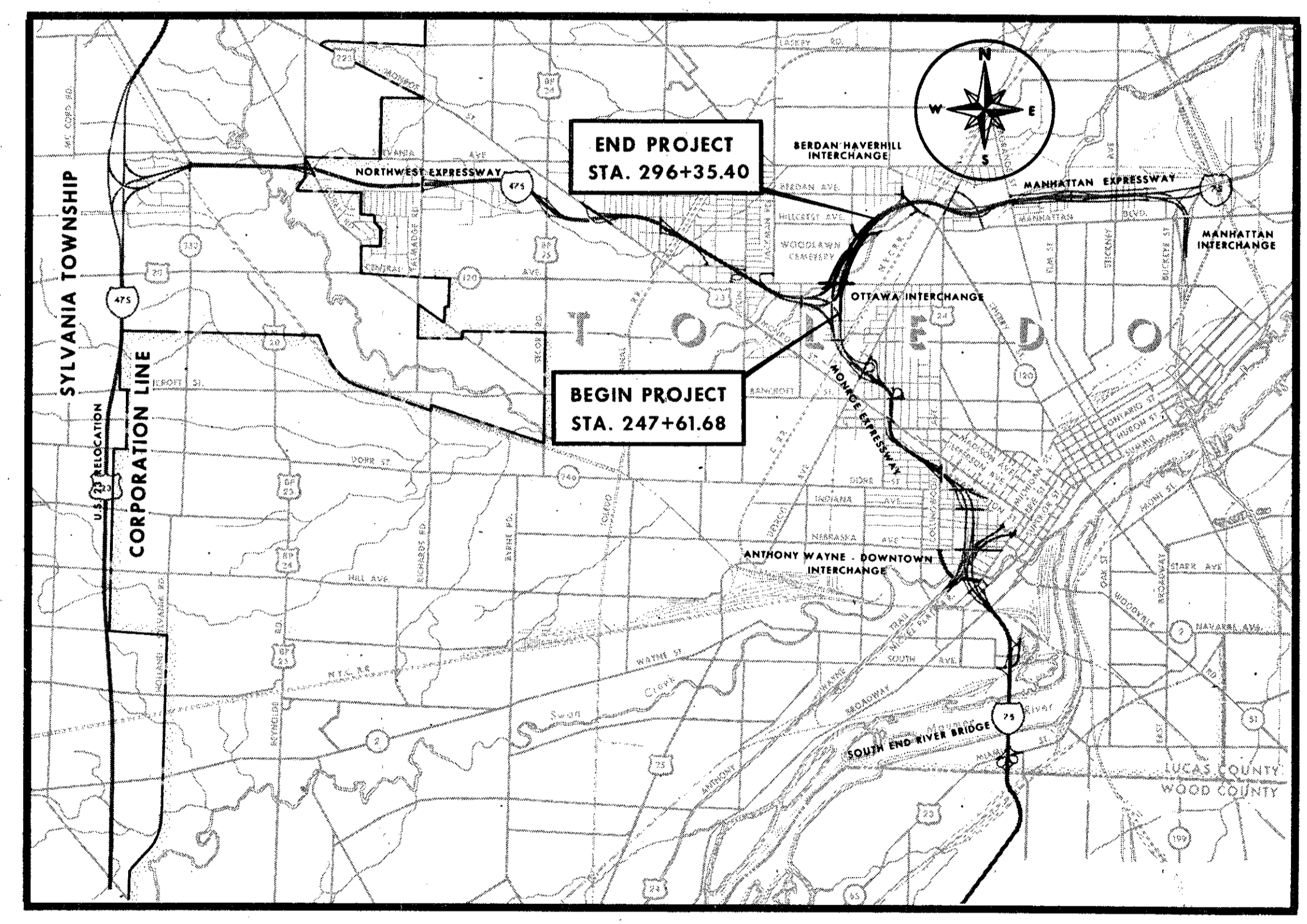
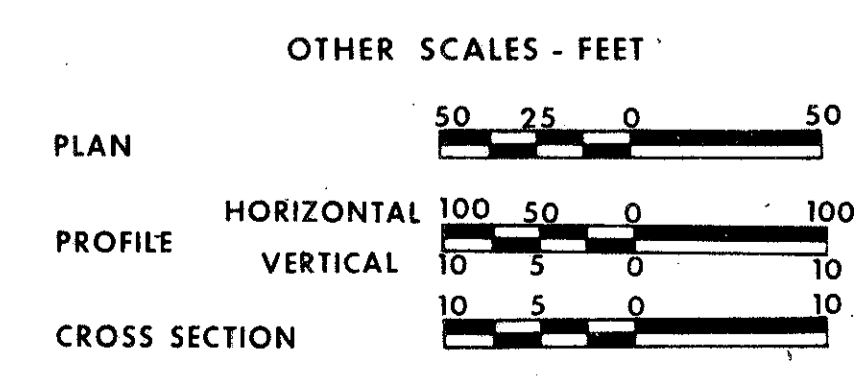
SUPPLEMENTAL SPECIFICATIONS

NUMBER	DATE	NUMBER	DATE
806	1-1-69	836	6-17-69
808	1-1-69	938	8-12-69
811	1-1-69	814	1-1-69
815	1-1-69	838	3-18-70
816	1-1-69		
801	1-1-69		
1001	1-1-69		

LOCATION MAP



PORTION TO BE IMPROVED



STANDARD DRAWINGS

NUMBER	DATE	NUMBER	DATE
AS-1-67	6-12-69	HL-1	11-1-65
MC-1	6-13-69	HL-2	11-1-65
MC-2	6-1-65	HL-3	11-1-65
MC-3	6-20-69	HL-4	1-1-66
MC-4	6-13-69	HW-E	6-1-65
MC-6	6-1-65	CB 2-2-A & B	6-1-65
MC-7	10-1-68	CB-3A	6-1-65
BP-1	6-1-65	CB-5	9-1-69
BP-2	12-1-68	CB-6	6-1-65
BP-3	12-1-68	CB 3	6-1-65
BP-4	12-1-68	CB-458 A	6-6-65
BP-7	1-1-66	M.H.-1	10-1-68
F-1	3-10-69	M.H.-2	10-1-68
F-3	3-10-69	RB-1-55	2-2-59
FACI-1	9-15-67	BR 2-67	9-17-69
FACI-2	6-1-65	BR-1-67	2-1-68
BP-5	6-1-65	SD-1-69	6-12-69
BP-6	6-1-65	SP-53	6-30-61
GR-2B	2-15-68	GR-1	1-1-67
GR-6	7-15-68	L-1	6-1-65
MH-1A	10-1-68	GR-2A	1-1-67

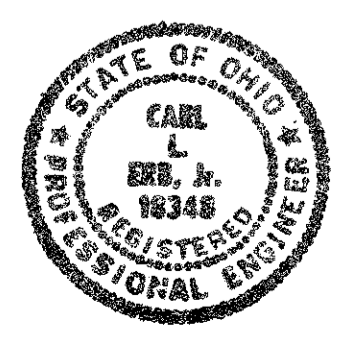
Sheet Nos. 6, 7, 8, 13, 21 & 134
revised 11-9-70 AWG

DEPARTMENT OF TRANSPORTATION
FEDERAL HIGHWAY ADMINISTRATION
BUREAU OF PUBLIC ROADS

APPROVED: _____

DIVISION ENGINEER _____ DATE _____

FILE NO.	LUCAS COUNTY	PART 33
	SEC. LUC 75-4.54	
	DATE OF LETTING	19
	CONTRACT NO.	

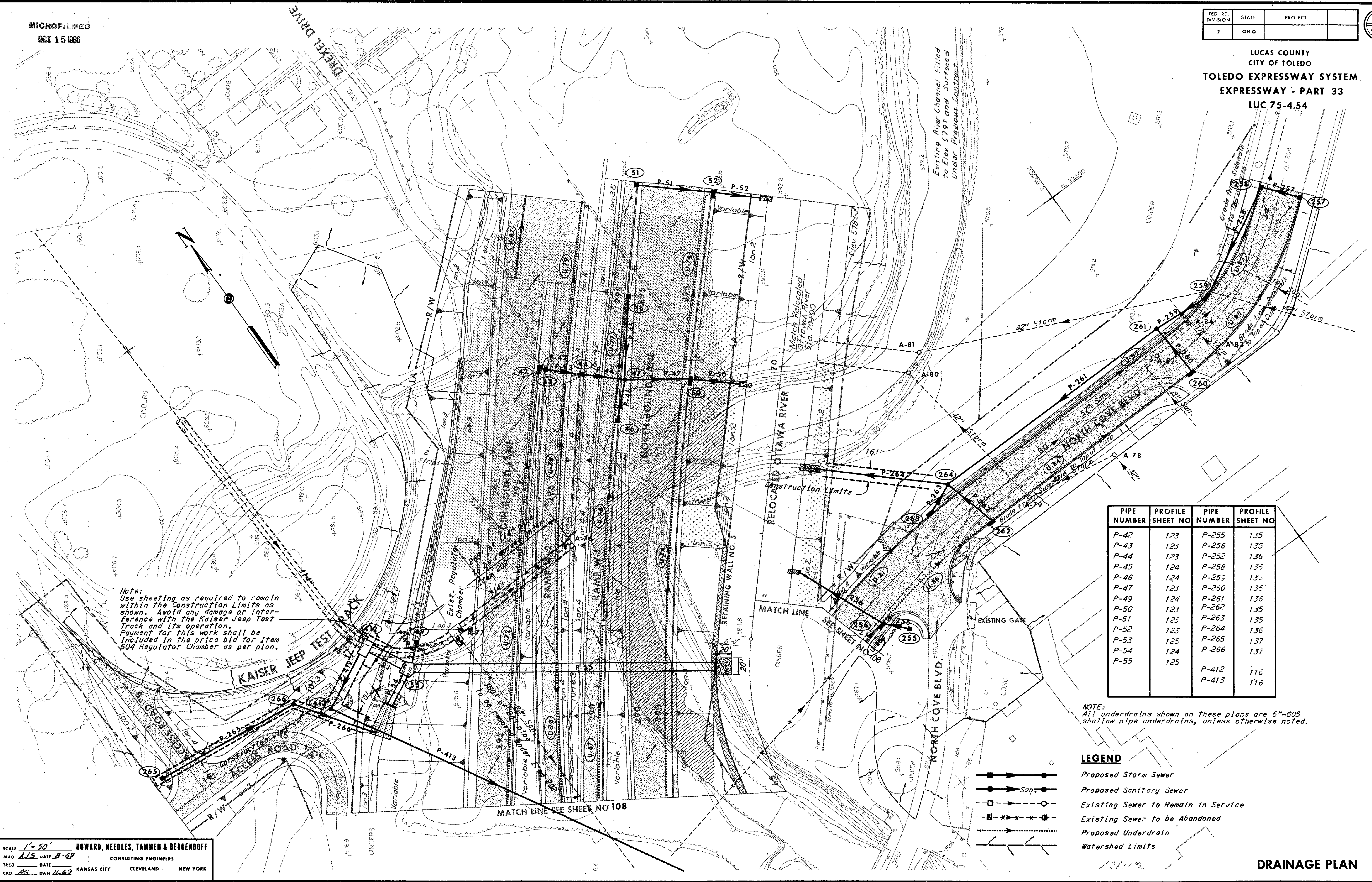


MICROFILMED
OCT 15 1966

FED. RD. DIVISION	STATE	PROJECT
2	OHIO	

109
478

LUCAS COUNTY
CITY OF TOLEDO
TOLEDO EXPRESSWAY SYSTEM
EXPRESSWAY - PART 33
LUC 75-4.54



Note:
Use sheeting as required to remain within the Construction Limits as shown. Avoid any damage or interference with the Kaiser Jeep Test Track and its operation. Payment for this work shall be included in the price bid for item 604 Regulator Chamber as per plan.

PIPE NUMBER	PROFILE SHEET NO	PIPE NUMBER	PROFILE SHEET NO
P-42	123	P-255	135
P-43	123	P-256	135
P-44	123	P-252	136
P-45	124	P-258	135
P-46	124	P-255	135
P-47	123	P-260	135
P-49	124	P-261	136
P-50	123	P-262	135
P-51	123	P-263	135
P-52	123	P-264	136
P-53	125	P-265	137
P-54	124	P-266	137
P-55	125		
		P-412	116
		P-413	116

NOTE:
All underdrains shown on these plans are 6"-605 shallow pipe underdrains, unless otherwise noted.

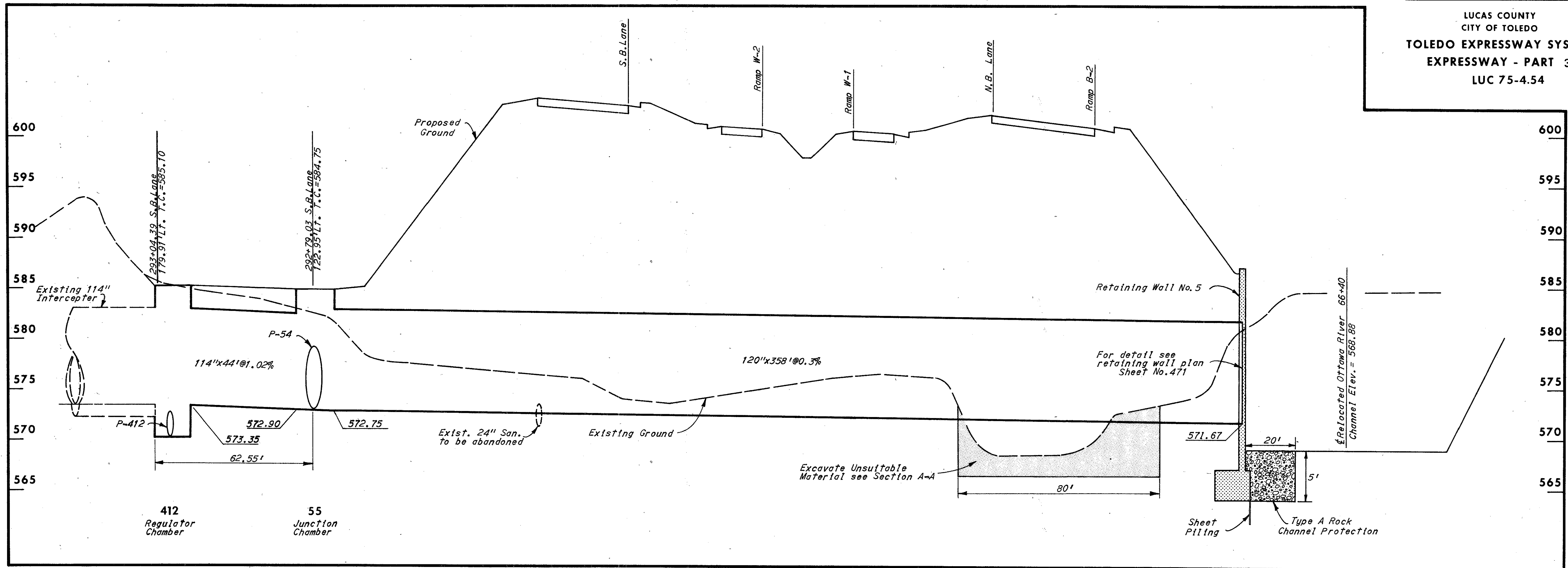
LEGEND

- Proposed Storm Sewer
- Proposed Sanitary Sewer
- - - Existing Sewer to Remain in Service
- - - Existing Sewer to be Abandoned
- - - Proposed Underdrain
- Watershed Limits

SCALE 1" = 50'
MAD. A.S. DATE 8-69
TRCD DATE
CRD. AG. DATE 11-69
HOWARD, NEEDLES, TAMMEN & BERGENDOFF
CONSULTING ENGINEERS
KANSAS CITY CLEVELAND NEW YORK

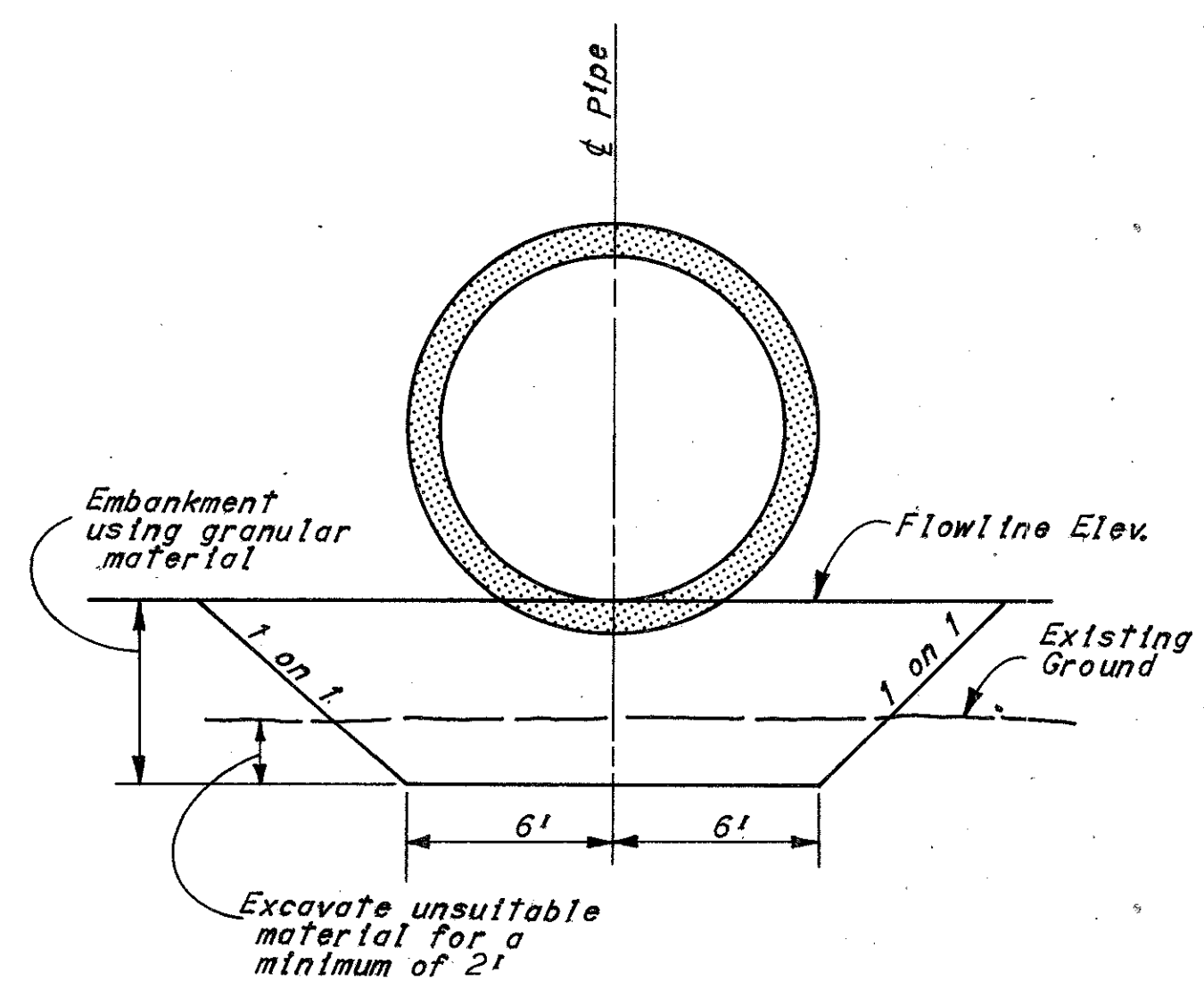
DRAINAGE PLAN

LUCAS COUNTY
CITY OF TOLEDO
TOLEDO EXPRESSWAY SYSTEM
EXPRESSWAY - PART 33
LUC 75-4.54



P-53
Type C
With 706.11 Joints.

P-55
Type B
706.02 Class IV
With 706.11 Joints



Note: Payment for this work shall be included in the price bid for the conduit.

SECTION A-A
No Scale

603 CONDUIT				601		
CODE	ROADWAY	INLET CODE		114" Type C With 706.11 Joints	120" Type B 706.02 Class IV With 706.11 Joints	Type A Rock Channel Protection C.Y.
		FROM	TO			
P-53	S.B.L.	412	55	44'		
P-55	S.B.L.	55	Outlet		358'	74
LUC 75-4.54 TOTALS					44'	358'

604 MANHOLES, CATCH BASINS AND INLETS		
CODE	LOCATION	Junction Chamber as per plan
55	122+79.0 S.B.L. 122.95' Lt.	1
LUC 75-4.54 TOTALS		