

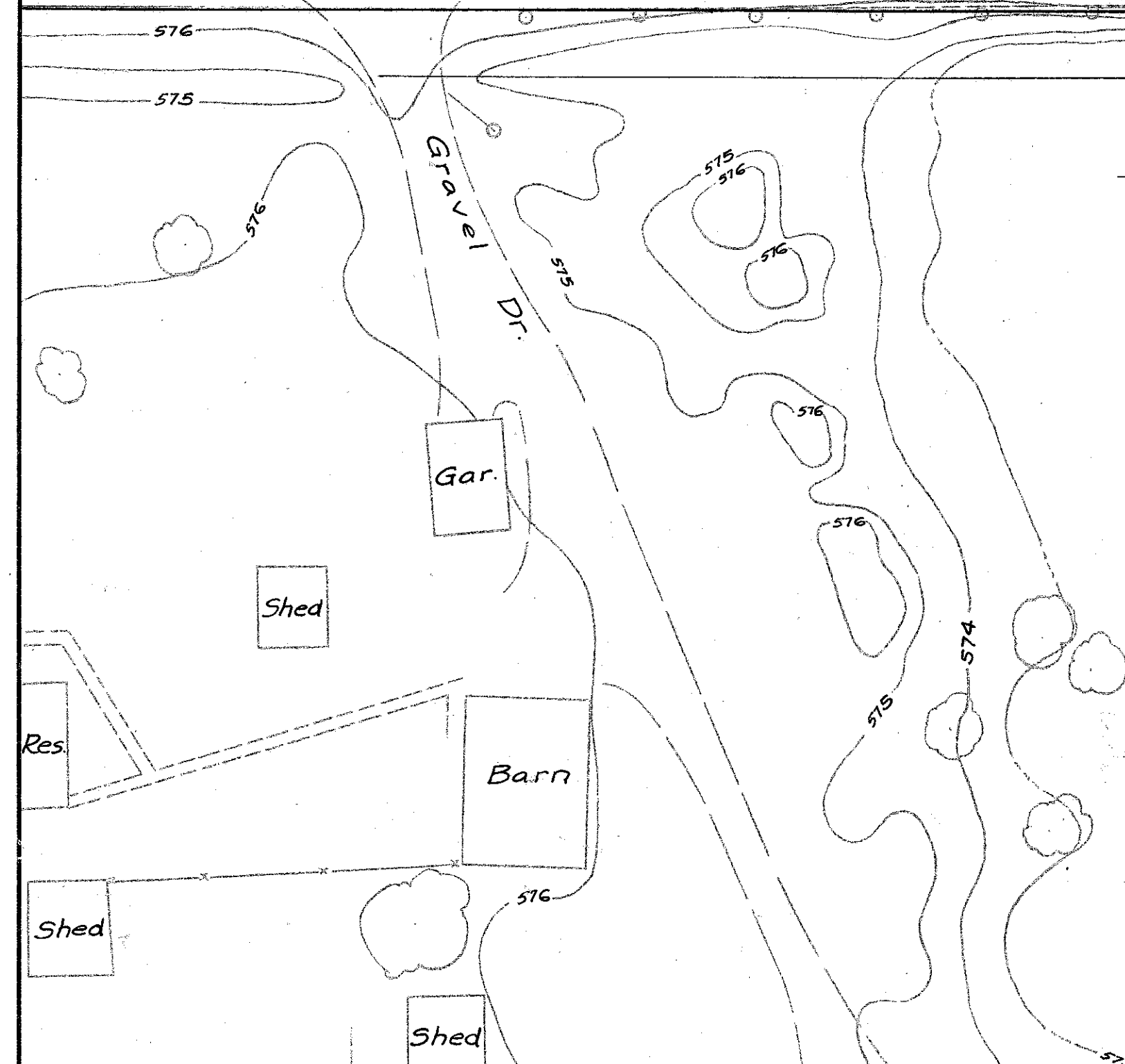
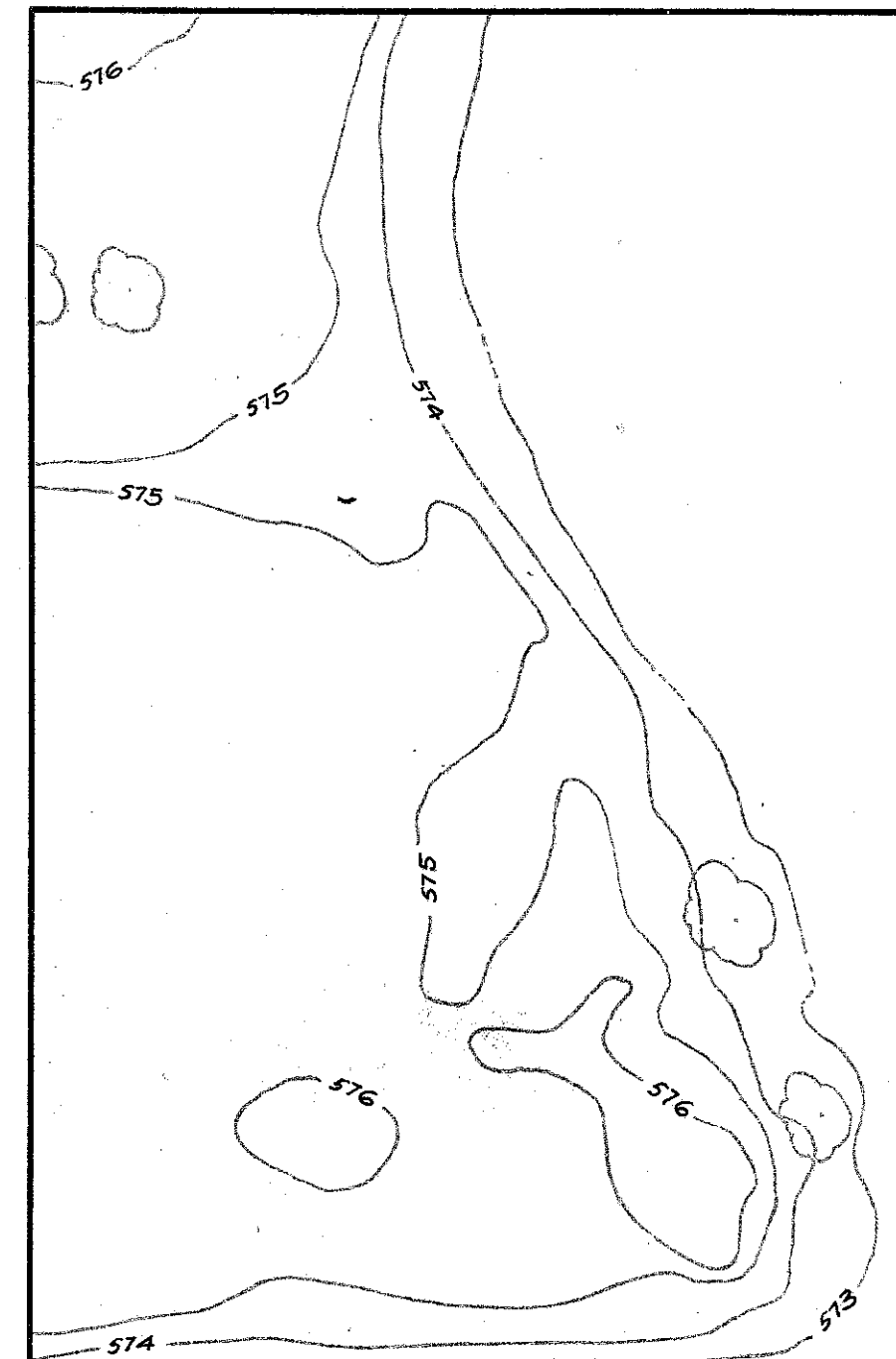
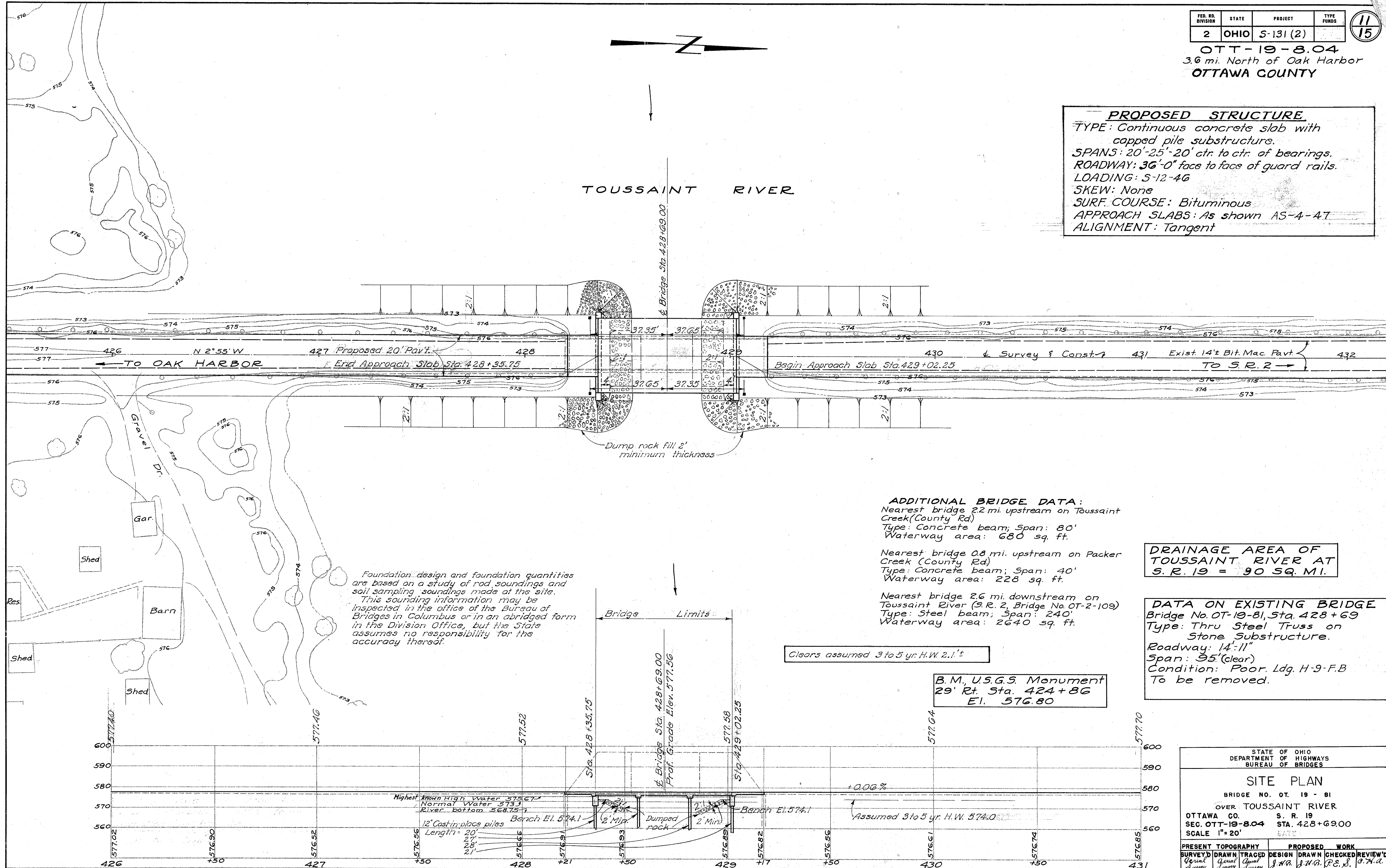
FED. RD. DIVISION	STATE	PROJECT	TYPE FUNDS
2	OHIO	S-131 (2)	

11
15

OTT-19-8.04
3.6 mi. North of Oak Harbor
OTTAWA COUNTY

PROPOSED STRUCTURE
 TYPE: Continuous concrete slab with capped pile substructure.
 SPANS: 20'-25'-20' ctr. to ctr. of bearings.
 ROADWAY: 36'-0" face to face of guard rails.
 LOADING: S-12-46
 SKEW: None
 SURF COURSE: Bituminous
 APPROACH SLABS: As shown AS-4-47
 ALIGNMENT: Tangent

TOUSSAINT RIVER



Foundation design and foundation quantities are based on a study of rod soundings and soil sampling soundings made at the site. This sounding information may be inspected in the office of the Bureau of Bridges in Columbus or in an abridged form in the Division Office, but the State assumes no responsibility for the accuracy thereof.

ADDITIONAL BRIDGE DATA:
 Nearest bridge 2.2 mi. upstream on Toussaint Creek (County Rd)
 Type: Concrete beam; Span: 80'
 Waterway area: 680 sq. ft.

Nearest bridge 0.8 mi. upstream on Packer Creek (County Rd)
 Type: Concrete beam; Span: 40'
 Waterway area: 228 sq. ft.

Nearest bridge 2.6 mi. downstream on Toussaint River (S.R. 2, Bridge No. OT-2-109)
 Type: Steel beam; Span: 240'
 Waterway area: 2640 sq. ft.

DRAINAGE AREA OF TOUSSAINT RIVER AT S.R. 19 = 90 SQ. MI.

DATA ON EXISTING BRIDGE
 Bridge No. OT-19-81, Sta. 428+69
 Type: Thru Steel Truss on Stone Substructure.
 Roadway: 14'-11"
 Span: 95' (clear)
 Condition: Poor. Ldg. H-9-F.B
 To be removed.

Clears assumed 3 to 5 yr. H.W. 2.1'±

B.M., U.S.G.S. Monument
 29' Rt. Sta. 424+86
 El. 576.80

STATE OF OHIO DEPARTMENT OF HIGHWAYS BUREAU OF BRIDGES			
SITE PLAN			
BRIDGE NO. OT. 19 - 81 OVER TOUSSAINT RIVER			
OTTAWA CO. S. R. 19		SEC. OTT-19-8.04 STA. 428+69.00	
SCALE 1"=20'			
PRESENT TOPOGRAPHY		PROPOSED WORK	
SURVEY'D	DRAWN	DESIGN	DRAWN
Tracy	Tracy	J.N.B.	J.N.B.
Checked	Checked	Checked	Checked
Tracy	Tracy	P.E. S.	P.E. S.
BFG W.H.C. 10-29-57			

