

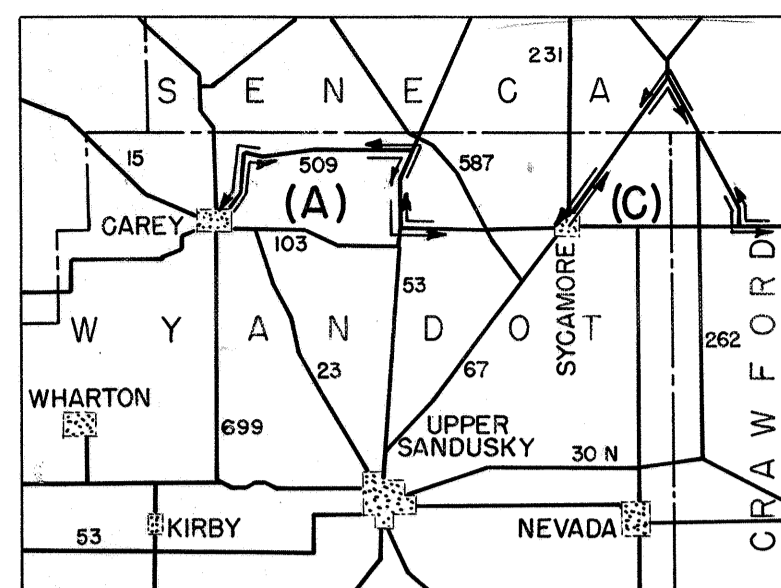
FED. RD. DIVISION	STATE	PROJECT
2	OHIO	S-3(2)

70

WYANDOT COUNTY  
WYA-103-(10.59)(13.59)(19.68)

S-3(2)

SEP 14 1965  
GROUND PHOTOLAB



DETOUR A & C  
SCALE OF MILES  
0 1 2 3

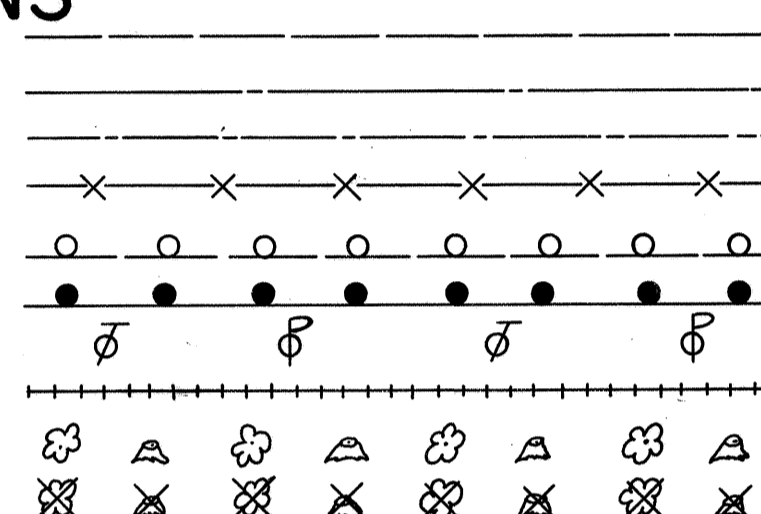
# STATE OF OHIO DEPARTMENT OF HIGHWAYS WYA-103-(10.59)(13.59)(19.68)

WYANDOT COUNTY

CRAWFORD, TYMOCHTEE, & SYCAMORE TWPS.

### CONVENTIONAL SIGNS

- TOWNSHIP LINE
- CENTER LINE
- CORPORATION LINE
- FENCE LINE
- GUARD RAIL (EXISTING)
- GUARD RAIL (PROPOSED)
- POLE LINE
- RAILROAD
- TREES OR STUMPS (EXISTING)
- TREES OR STUMPS (TO BE REMOVED)



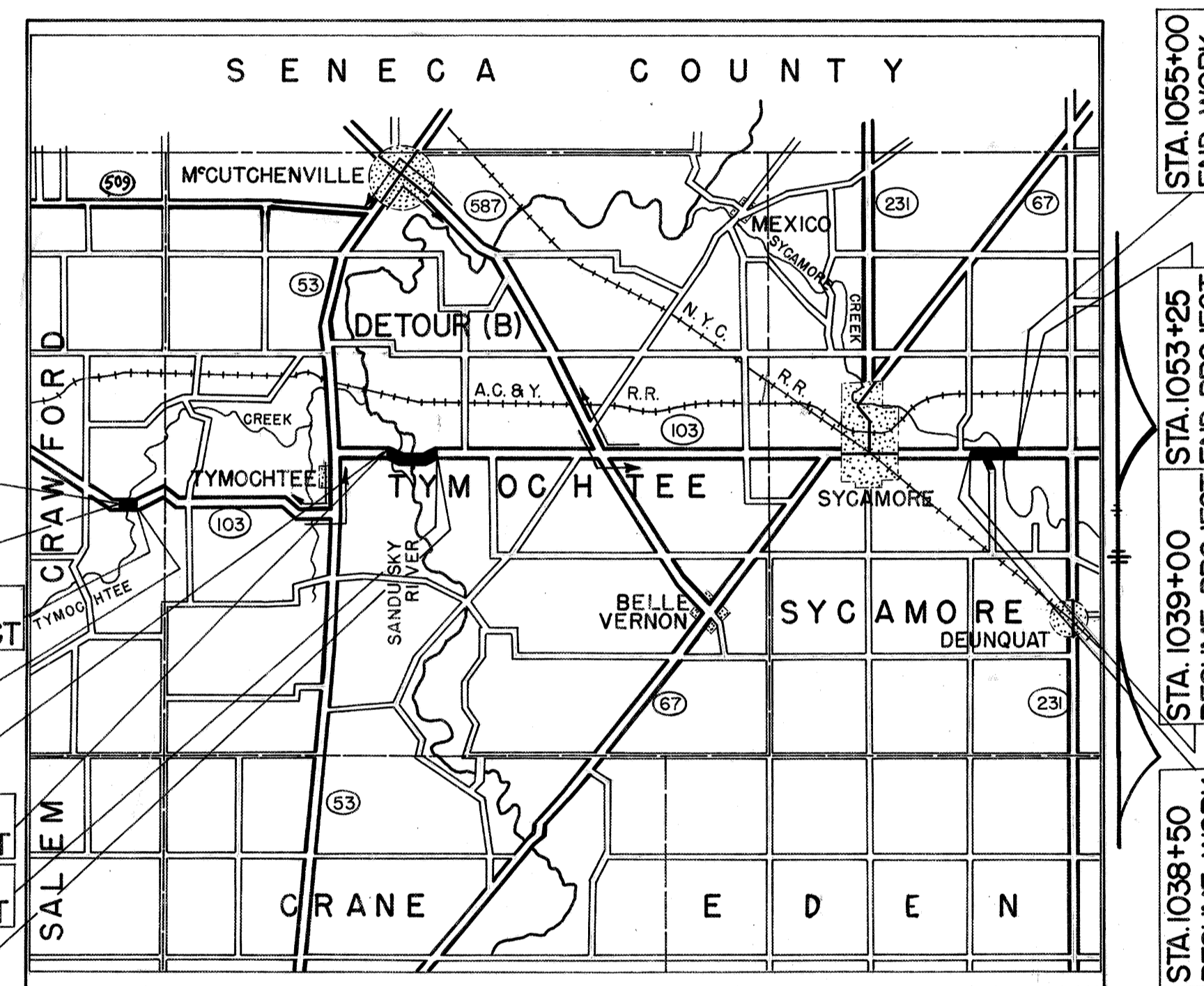
### INDEX OF SHEETS

TITLE SHEET	1		
TYPICAL SECTIONS	2		
GENERAL NOTES	3		
SUMMARY	4		
PLAN AND PROFILE	5-7	20-22	43-45
CROSS SECTIONS	8-16	23-37	46-49
CHANNEL SECTIONS	17-19	39-42	52-53
INTERSECTIONS			50-51
STRUCTURES 20' SPAN & UNDER	38		
STRUCTURES OVER 20' SPAN	54-58	59-63	64-67
RIGHT OF WAY	68	69	70

### LINE DATA

BEGIN PROJECT - STA. 559+00; SUSPEND PROJECT - STA. 573+75 = 1475.00 LIN. FT.  
RESUME PROJECT - STA. 717+75; SUSPEND PROJECT - STA. 741+25 = 2350.00 LIN. FT.  
RESUME PROJECT - STA. 1039+00; END PROJECT - STA. 1053+25 = 1425.00 LIN. FT.  
ADD FOR STATION EQUATION PART I 1.04 LIN. FT.  
NET LENGTH OF PROJECT 5251.04 LIN. FT. OR 0.994 MI.

BEGIN WORK - STA. 558+25; SUSPEND WORK - STA. 575+70 = 1745.00 LIN. FT.  
RESUME WORK - STA. 716+75; SUSPEND WORK - STA. 743+00 = 2625.00 LIN. FT.  
RESUME WORK - STA. 1038+50; END WORK - STA. 1055+00 = 1650.00 LIN. FT.  
ADD FOR STATION EQUATION PART I 1.04 LIN. FT.  
ADD FOR COUNTY ROAD APPROACH - RT. STA. 1043+75.00 301.50 LIN. FT.  
NET LENGTH OF WORK 6322.54 LIN. FT. OR 1.197 MI.



- STA. 558+25 BEGIN WORK
- STA. 559+00 BEGIN PROJECT
- STA. 573+75 SUSPEND PROJECT
- STA. 575+70 SUSPEND WORK
- STA. 716+75 RESUME WORK
- STA. 717+75 RESUME PROJECT
- STA. 741+25 SUSPEND PROJECT
- STA. 743+00 SUSPEND WORK

- STA. 1055+00 END WORK
- STA. 1053+25 RESUME PROJECT END PROJECT
- STA. 1039+00 RESUME WORK
- STA. 1038+50 RESUME WORK

DELIVERY POINT: PART I CAREY. AVERAGE HAUL 4 MILES C.&O. R.R.  
PART II & III SYCAMORE 3 MILES

SCALE OF MILES  
0 1 2 3 4

### LOCATION MAP



### SCALE

- 1 INCH = 50 FEET
- 1 INCH = 50 FEET
- 1 INCH = 5 FEET
- 1 INCH = 5 FEET

- PLAN
- PROFILE (HORIZONTAL)
- PROFILE (VERTICAL)
- CROSS SECTIONS

THE STANDARD SPECIFICATIONS OF THE STATE OF OHIO, DEPARTMENT OF HIGHWAYS, INCLUDING CHANGES AND SUPPLEMENTAL SPECIFICATIONS LISTED IN THE PROPOSAL SHALL GOVERN THIS IMPROVEMENT.

THE RIGHT-OF-WAY FOR THIS IMPROVEMENT WILL BE PROVIDED BY THE STATE OF OHIO.

I HEREBY APPROVE THESE PLANS AND DECLARE THAT THE MAKING OF THIS IMPROVEMENT WILL REQUIRE THE CLOSING OF THE HIGHWAY TO TRAFFIC EXCEPT AS NOTED ON SHEET NO.3 AND THAT DETOURS WILL BE PROVIDED AS INDICATED ON THESE PLANS.

APPROVED \_\_\_\_\_  
DATE 2-13-62 DIVISION DEPUTY DIRECTOR

APPROVED \_\_\_\_\_  
DATE 4-23-62 ENGINEER OF BRIDGES

APPROVED \_\_\_\_\_  
DATE 4-27-62 ENGINEER OF LOCATION AND DESIGN

APPROVED \_\_\_\_\_  
DATE 4-27-62 DEPUTY DIRECTOR OF DESIGN AND CONSTRUCTION

APPROVED \_\_\_\_\_  
DATE 4-26-62 DEPUTY DIRECTOR OF RIGHT OF WAY

APPROVED \_\_\_\_\_  
DATE 5-3-62 DEPUTY DIRECTOR OF PLANNING AND PROGRAMMING

APPROVED \_\_\_\_\_  
DATE 5-4-62 FIRST ASSISTANT DIRECTOR

APPROVED \_\_\_\_\_  
DATE 5-4-62 DIRECTOR OF HIGHWAYS

DEPARTMENT OF COMMERCE  
BUREAU OF PUBLIC ROADS

APPROVED: \_\_\_\_\_  
DIVISION ENGINEER DATE

SEP 14 1965  
GROUND PHOTOLAB

FILE N <sup>o</sup>	WYANDOT COUNTY	WYA-103-(10.59)(13.59)(19.68)
DATE OF LETTING	19	
CONTRACT N <sup>o</sup>		

STANDARD DRAWINGS					
DR-1	1-3-55	L-1	4-1-50	FACI-1	12-27-61
G-707	6-1-56	L-3	4-1-50	FACI-2	12-27-61
I-1	11-15-60	L-3A	4-1-50	CSB-1-55	SHTS 1,2,4 OF 6 2-2-59
I-8CB, I-2A&2B	1-26-59	RI-1	7-15-58	CSB-2-56	SHTS 1,3,4 OF 6 2-2-59
I-8 I-NO. 1	3-2-59	T-35	1-2-56	RB-1-55	2-2-59
I-15 NO. 1	11-15-60	SP-53	6-30-61		
I-15 NO. 2A	8-17-60	AS-1-54	12-1-54		

SUPPLEMENTAL SPECIFICATIONS	
I-128	7-31-59
I-129	Rev. 4-5-61
M-107.18	Rev. 4-3-61
M-109.28	Rev. 8-12-59

# STRUCTURE DETAIL

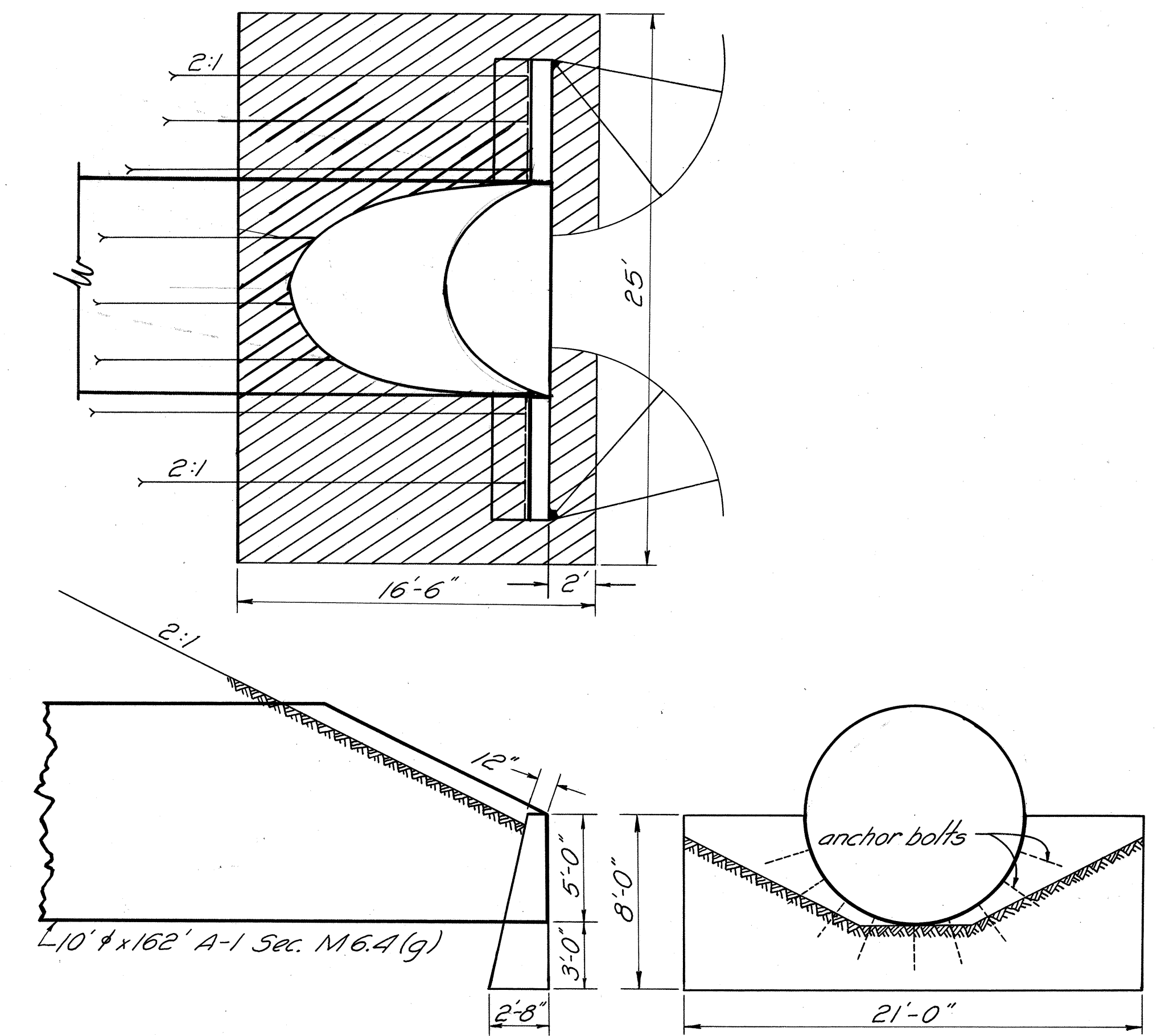
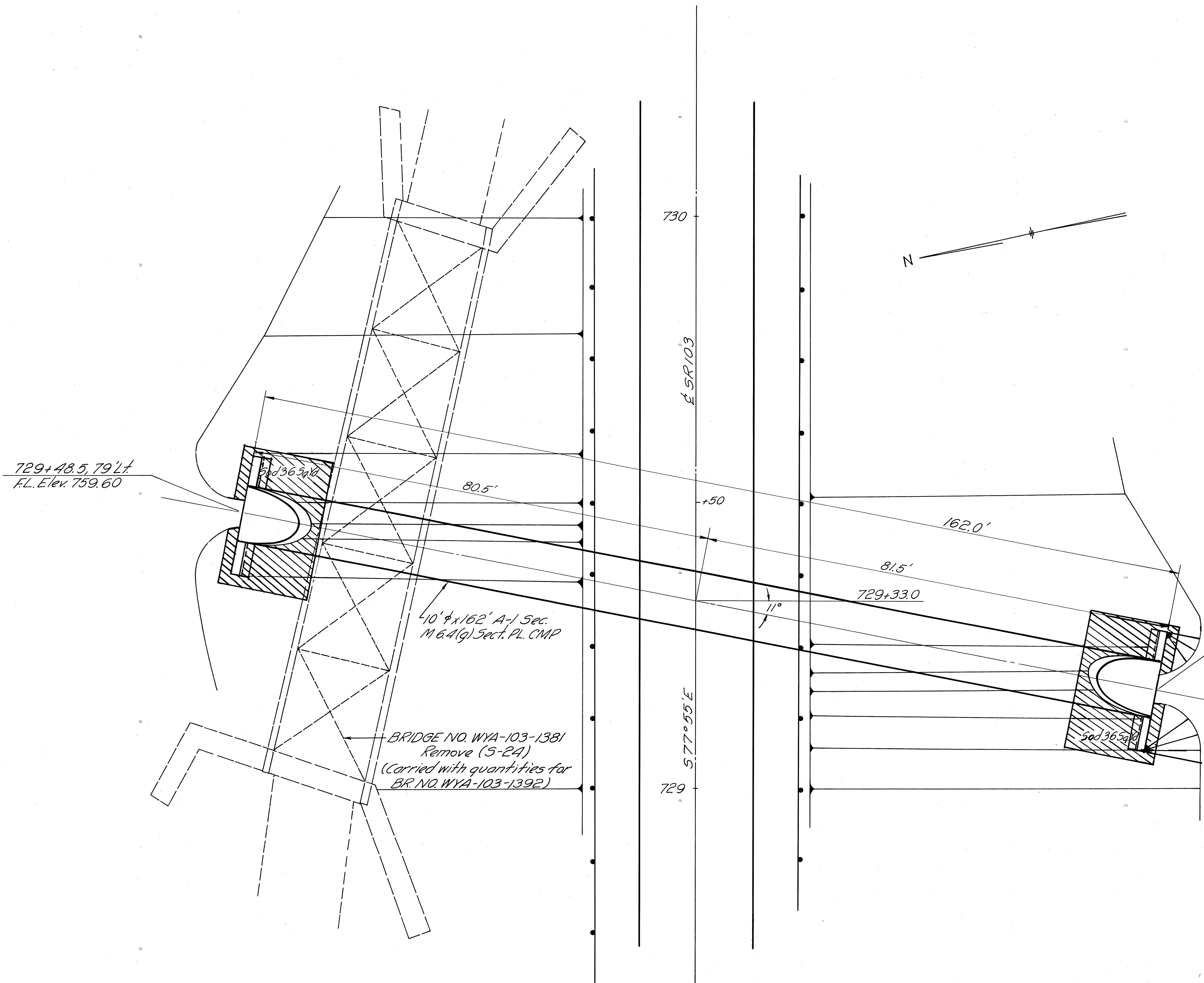
## BR. NO. WYA-103-1381

SCALE IN FEET

FED. RD. DIVISION	STATE	PROJECT
2	OHIO	

38  
70

WYANDOT COUNTY  
WYA-103-(10.59)(13.59)(19.68)



ENDWALL DETAIL  
Applies either end - Pipe ends to be beveled as per Std. Drwg. SP53  
SCALE IN FEET

EXISTING STRUCTURE	PROPOSED STRUCTURE
Type ÷ High Truss	Type : 10" φ Sectional Plate Corr.
Span ÷ 94'-6"	Metal Pipe Sec. M64(g)
Skew ÷ None	Skew : 11° L.F.
Roadway - 15'-4" ft Steel Beam G.R.	
Wearing Surface - 1 1/2" Bit.	
Loading ÷ 5-10.4	

**PROPOSED WORK**  
 Remove Existing High Steel Truss with concrete abutments  
 Build 10" φ x 162' Pipe Culvert with endwalls as per plan.  
 Place Sod as shown

Standard Drawings: I-1, SP53  
 Note: The drainage area is included with that for Br. # WYA-103-1392  
 as this Structure is for overflow from the main channel of  
 Sandusky River.