

STATE OF OHIO DEPARTMENT OF HIGHWAYS FUL-2-(3.11-3.82) FUL-66-(1.97-2.39) VILLAGE OF ARCHBOLD GERMAN TOWNSHIP FULTON COUNTY

FED. RD. DIVISION	STATE	PROJECT
2	OHIO	STATE

1/32

OCT 25 1965
GROUND PHOTOLAB

FUL-2-(3.11-3.82)
FUL-66-(1.97-2.39)

1961 SPECIFICATIONS

The standard specifications of the State of Ohio, Department of Highways, including changes and supplemental specifications listed in the proposal shall govern this improvement.

The right-of-way for this improvement will be provided by the State of Ohio.

I hereby approve these plans and declare that the making of this improvement will require the closing of the highway to traffic, for a limited period of time, and that detours will be provided as indicated on these plans. I also declare that when this improvement does not require the closing of the highway to traffic that provisions for the maintenance and safety of traffic will be as set forth on these plans and estimates.

Approved: Ernest C. Mohr
Date: Aug 15-61 Mayor, Village of Archbold

Approved: G. H. Deane
Date: 8-25-61 Division Deputy Director

Approved: _____
Date: _____ Engineer of Bridges

Approved: W. Munson
Date: 9-21-61 Engineer of Location & Design

Approved: C. W. McCaughey
Date: 9-22-61 Deputy Director of Design & Construction

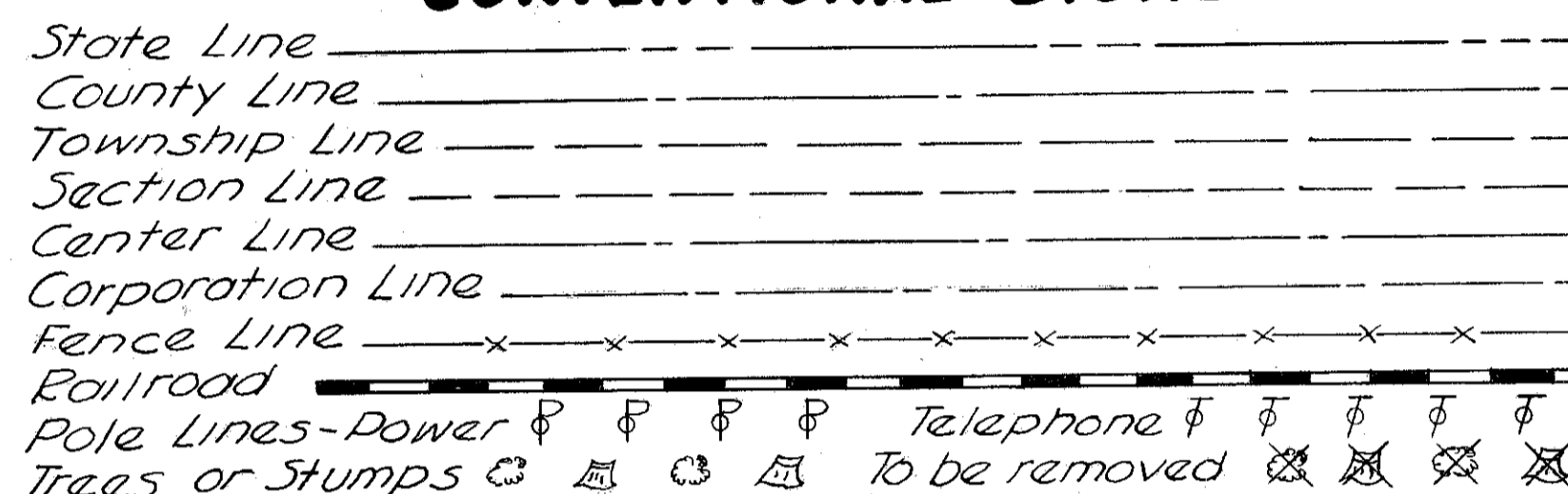
Approved: _____
Date: _____ Deputy Director of Right-of-Way

Approved: Ray E. Hooper
Date: 10-16-61 Deputy Director of Planning & Programming

Approved: W. Berry
Date: 10-17-61 First Assistant Director

Approved: E. S. Preston
Date: 10-17-61 Director of Highways

CONVENTIONAL SIGNS



INDEX OF SHEETS

Title Sheet	1
Typical Sections	2-3
General Summary	4
General Notes	5
Calculations	6
Sub-Summaries	7
Drainage Summary	8
Drainage Details	9
Plan & Profile Sheets	10-15
Intersection Details	16-20
Cross Sections	21-32

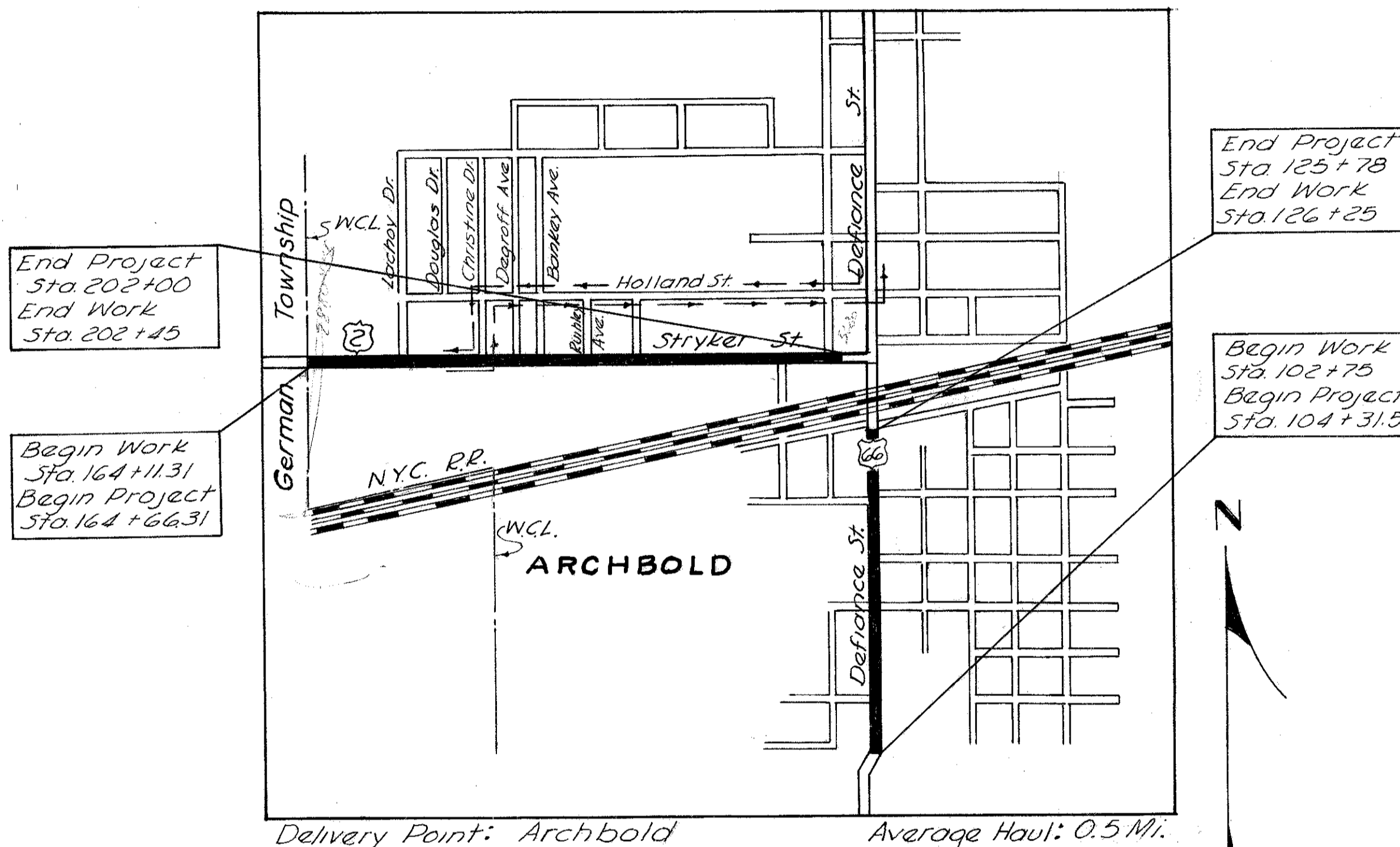
LINE DATA

S.R.2 RURAL
Begin Work, Station 164 + 11.31
End Work, Station 164 + 66.31
Length = 55.00 Lin. Ft. or .010 Mi.

S.R.2 MUNICIPAL
Begin Project and Work, Station 164 + 66.31
End Project, Station 202 + 00
End Work, Station 202 + 45
Length Project = 3733.69 Lin. Ft. or 0.707 Mi.
Length Work = 3778.69 Lin. Ft. or 0.715 Mi.

S.R. 66 (MUNICIPAL)
Begin Work, Station 102 + 75
Begin Project, Station 104 + 31.50
End Project, Station 125 + 78
End Work, Station 126 + 25
Length Project = 2146.50 Lin. Ft. or .406 Mi.
Length Work = 2350.00 Lin. Ft. or .445 Mi.

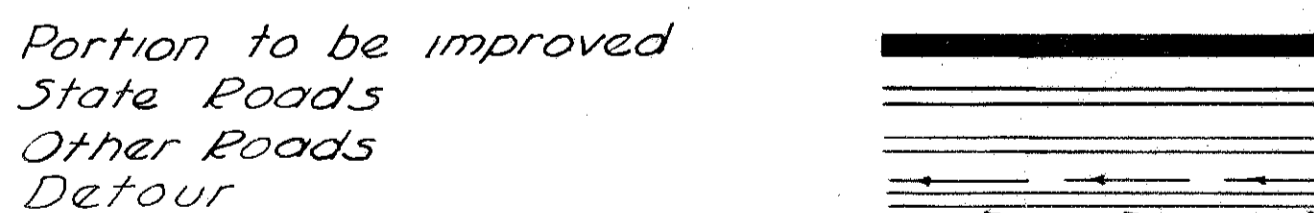
TOTAL S.R.2 & S.R.66
Length Project = 5880.19 Lin. Ft. or 1.113 Mi.
Length Work = 6183.69 Lin. Ft. or 1.171 Mi.



Delivery Point: Archbold Average Haul: 0.5 Mi.

LOCATION MAP

SCALE IN FEET



SCALE

Plan	1" = 50'
Profile, Horizontal	1" = 50'
Profile, Vertical	1" = 5'
Cross Sections	1" = 5'

Supplemental Specifications

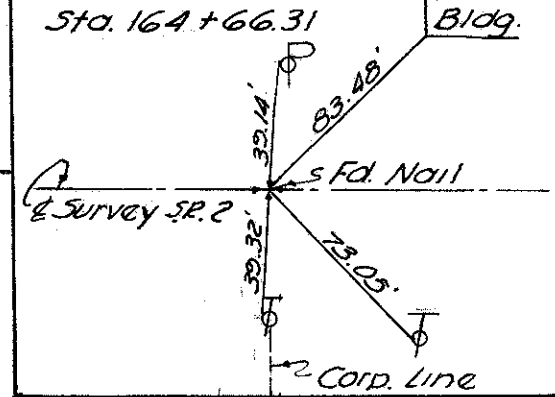
Supplemental Prints of Standard Construction Drawings

B-T-70-71	11-15-60	I-8 MH. No. 1-A	10-2-61	I-8 MH No. 1	1-26-59
DP-1	1-3-55	RT-1	7-15-58	L. J. No. 1	7-1-55
G-707	6-1-56	T-35	1-2-56		
I-1	11-15-60	I-12	7-1-54		
I-8 CB 1-2-A	1-26-59	L-1	4-1-50		
I-8 CB 3-A	1-26-59	L-3	4-1-50		
I-8 CB No. 6	1-26-59	L-3-A	4-1-50		

File No. FUL-2-(3.11-3.82)
FUL-66-(1.97-2.39)
Date of Letting _____
Contract No. _____

OCT 25 1965
GROUND PHOTOLAB

B.M. 724.81
R.R. Spike in Power Pole
Sta. 164+68 ~ 39' Lt.



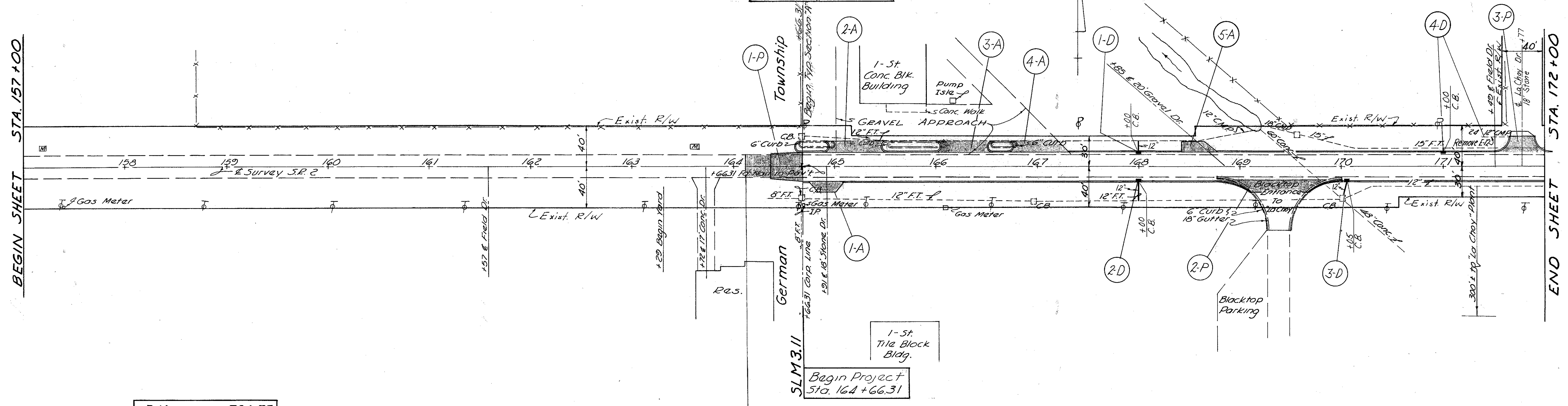
B.M. 723.63
R.R. Spike in Power Pole
Sta. 170+93 ~ 39' Lt.

DATE	PROJECT
2	CHIG

FUL-2-(3.11-3.81)
FUL-66-(1.97-2.39)

BEGIN SHEET STA. 157+00

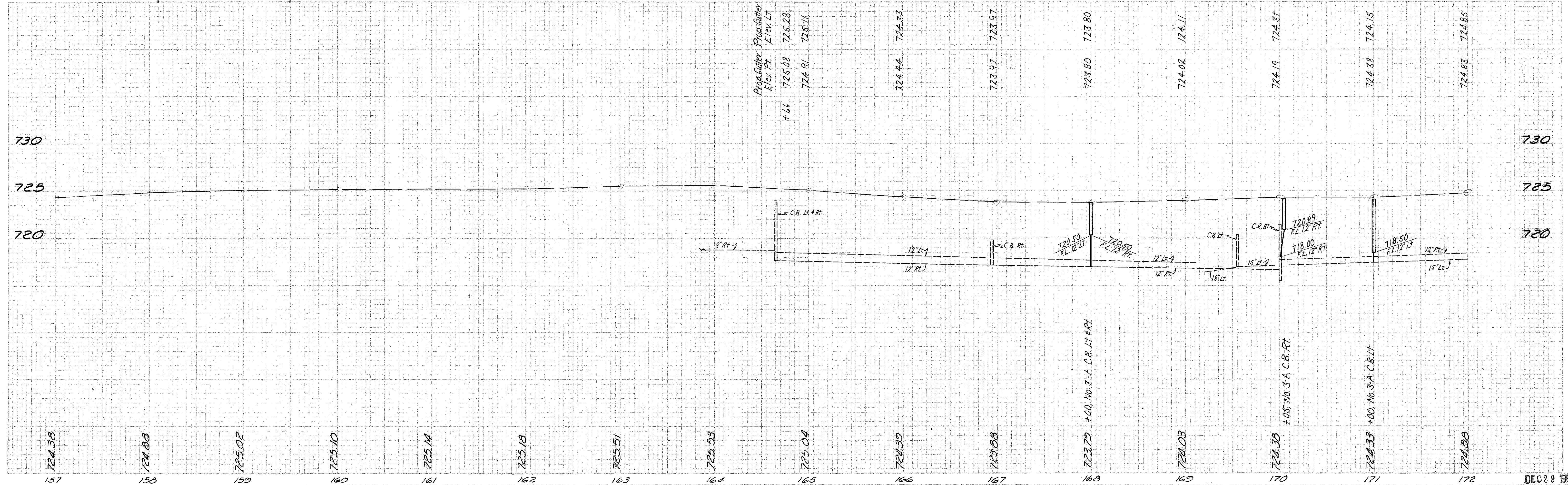
END SHEET STA. 172+00



B.M. 724.75
R.R. Spike in Tel. Pole
Sta. 158+77 ~ 39' Rt.

Begin Work
Sta. 164+11.31

Pop Gutter Elev. Lt.
725.08
724.91
725.11



724.38 157 724.88 158 725.02 159 725.10 160 725.14 161 725.18 162 725.51 163 725.53 164 725.04 165 724.52 166 723.88 167 723.79 +00 No. 3-A C.B. Lt. & Rt. 168 724.03 169 724.38 +00 No. 3-A C.B. Rt. 170 724.33 +00 No. 3-A C.B. Lt. 171 724.88 172

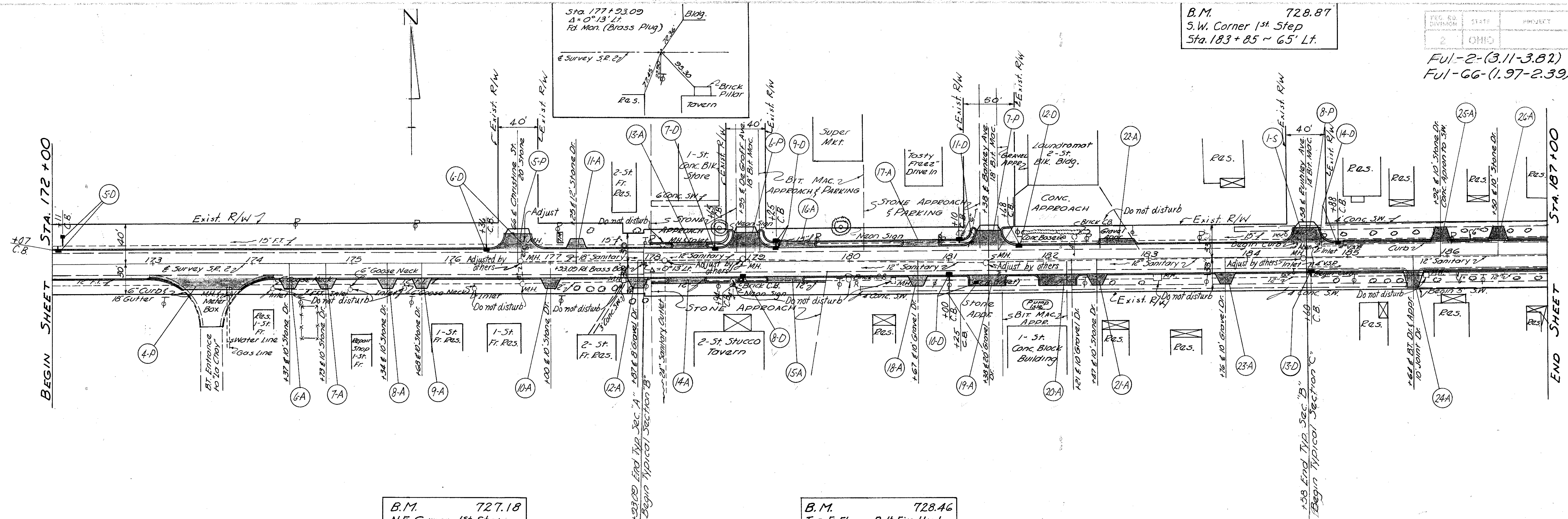
Sta. 157+00 To Sta. 172+00 S.R. 2

B.M. 728.87
S.W. Corner 1st Step
Sta. 183+85 ~ 65' Lt.

PG. NO.	STATE	PROJECT
2	OHIO	

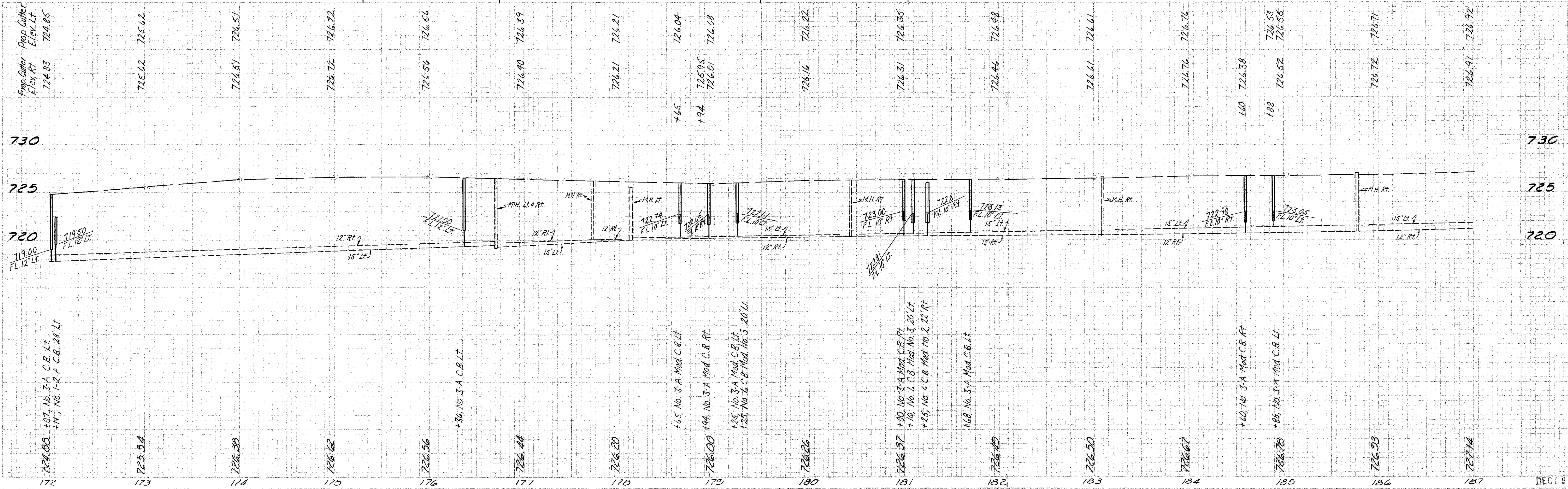
11
32

FUL-2-(3.11-3.82)
FUL-GG-(1.97-2.39)



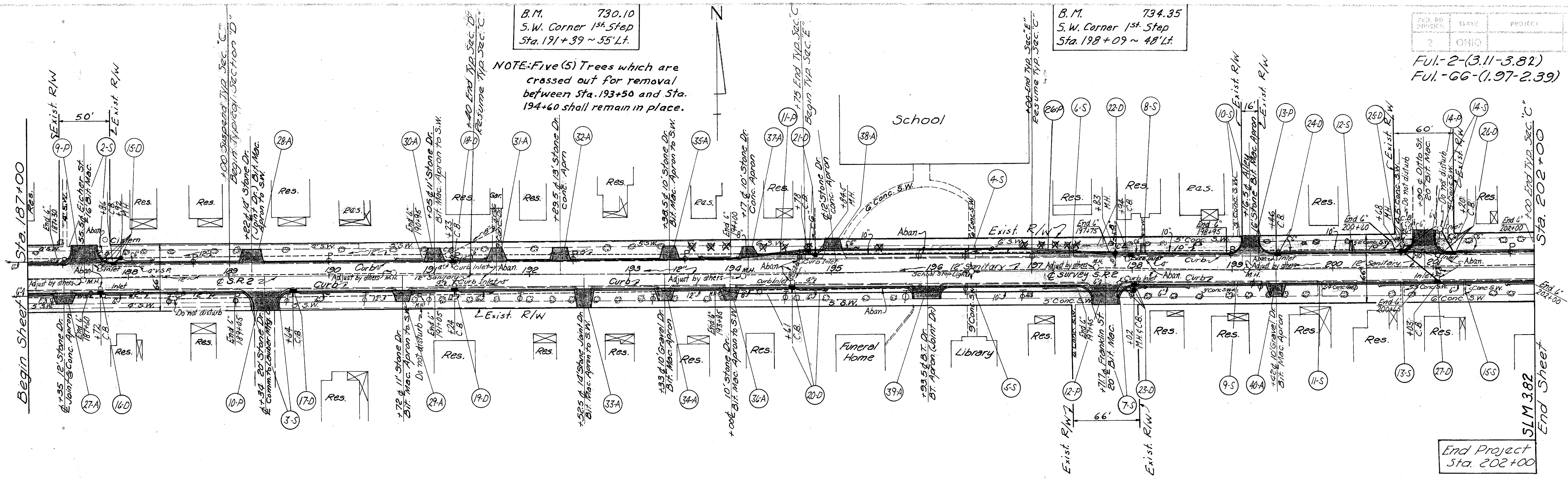
B.M. 727.18
N.E. Corner 1st Step
Sta. 175+95 ~ 54' Rt.

B.M. 728.46
Top E. Flange Bolt Fire Hyd.
Sta. 180+09 ~ 21' Rt.



Sta. 172+00 To Sta. 187+00 SR2

FUL-2-(3.11-3.82)
FUL-66-(1.97-2.39)



B.M. 730.10
S.W. Corner 1st Step
Sta. 191+39 ~ 55' Lt.

B.M. 734.35
S.W. Corner 1st Step
Sta. 198+09 ~ 48' Lt.

B.M. 729.02
Top Flange E. Bolt Fire Hyd.
Sta. 187+72 ~ 17' Rt.

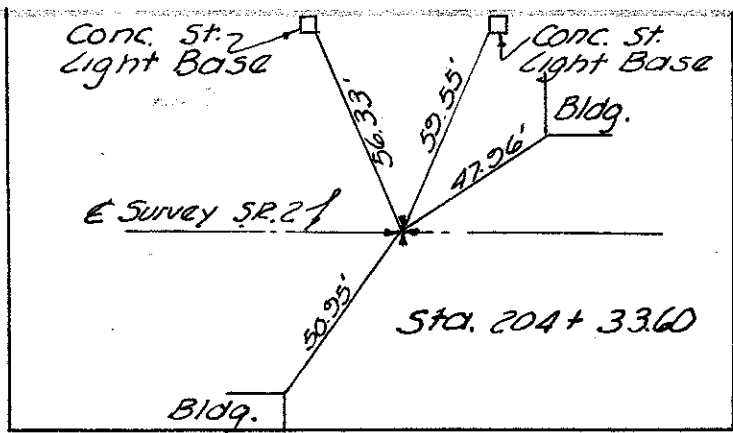
B.M. 731.42
Top E. Flange Bolt Fire Hyd.
Sta. 194+17 ~ 27' Rt.

Station	Prop. Profile Elev.	Prop. Gutter Elev. Lt.	Prop. Gutter Elev. Rt.
187	726.92	726.91	726.92
188	727.31	727.19	727.31
189	727.65	727.10	727.65
190	727.75	728.18	727.75
191	727.85	728.26	727.85
192	727.95	728.34	727.95
193	728.05	728.42	728.05
194	728.16	+40	728.16
195	728.39	728.39	728.39
196	728.80	728.80	728.80
197	729.23	729.23	729.23
198	729.49	+78	729.49
199	729.86	729.86	729.86
200	730.38	730.40	730.38
201	730.89	730.89	730.89
202	731.11	731.11	731.11
203	731.15	+17	731.15
204	731.09	+46	731.09
205	731.31	731.31	731.31
206	731.47	+43	731.47
207	731.83	+90	731.83
208	731.87	+20	731.87
209	731.75	731.75	731.75
210	731.91	731.91	731.91

Sta. 187+00 To Sta. 202+00 SR.2

FOR ANY QUESTIONS PLEASE CONTACT ODOT DIST. 2 REAL ESTATE AT 419-353-8131

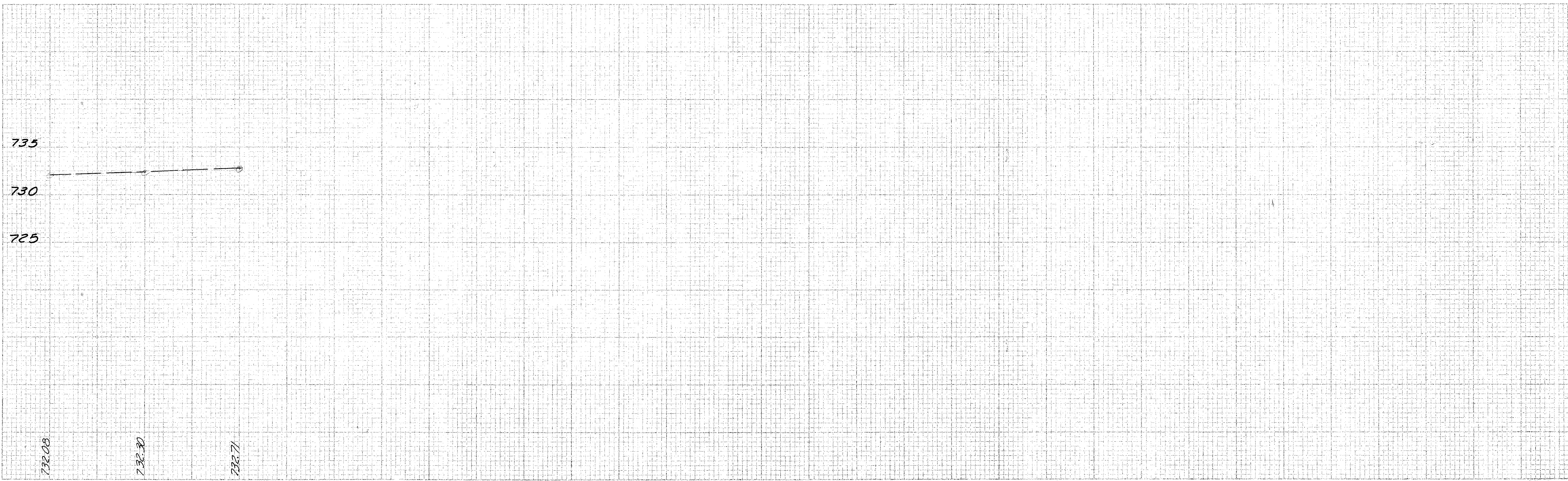
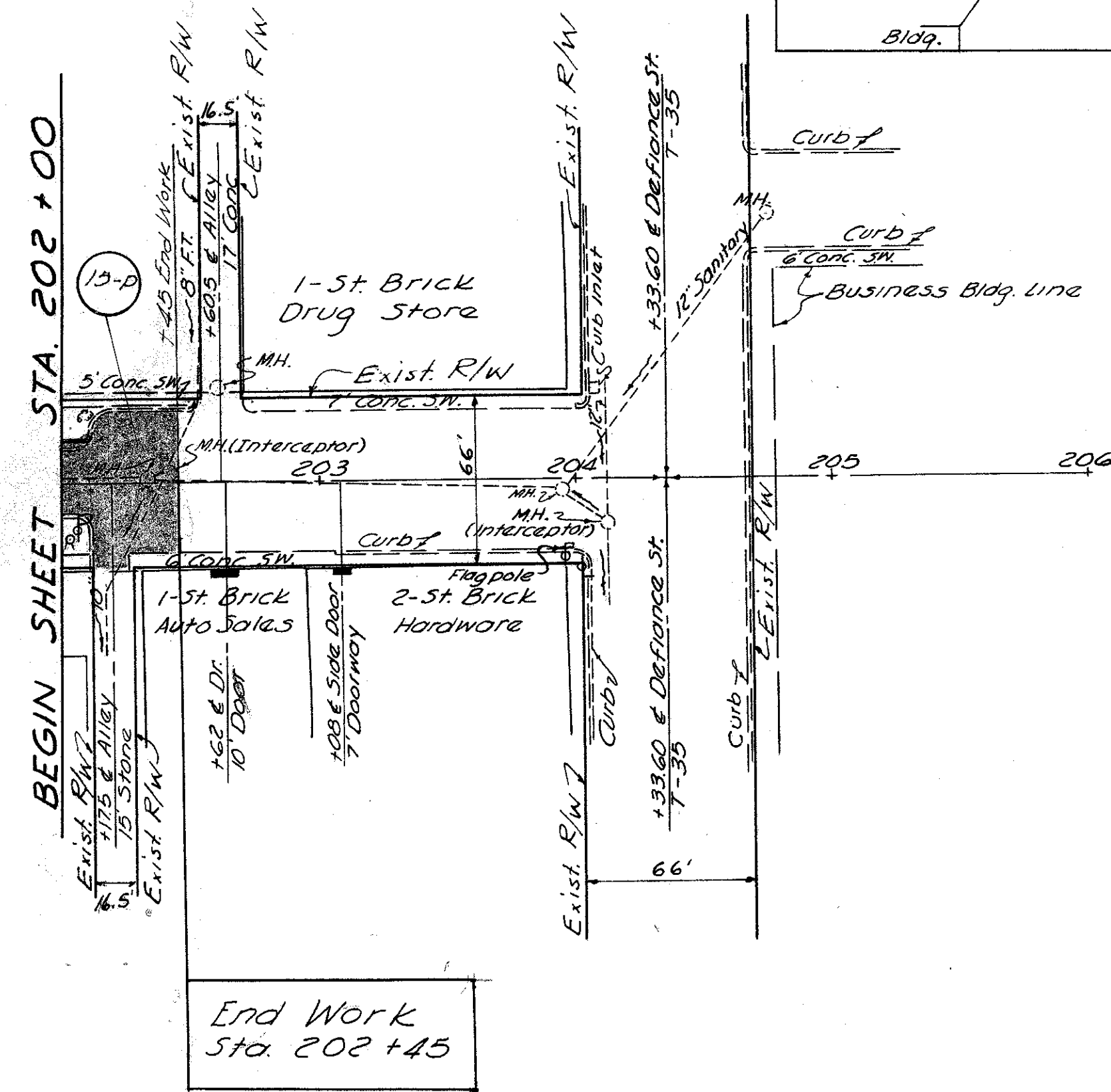
B. M. 732.86
S. E. Corner St. Light Base
Sta. 204+04 ~ 50' Lt.



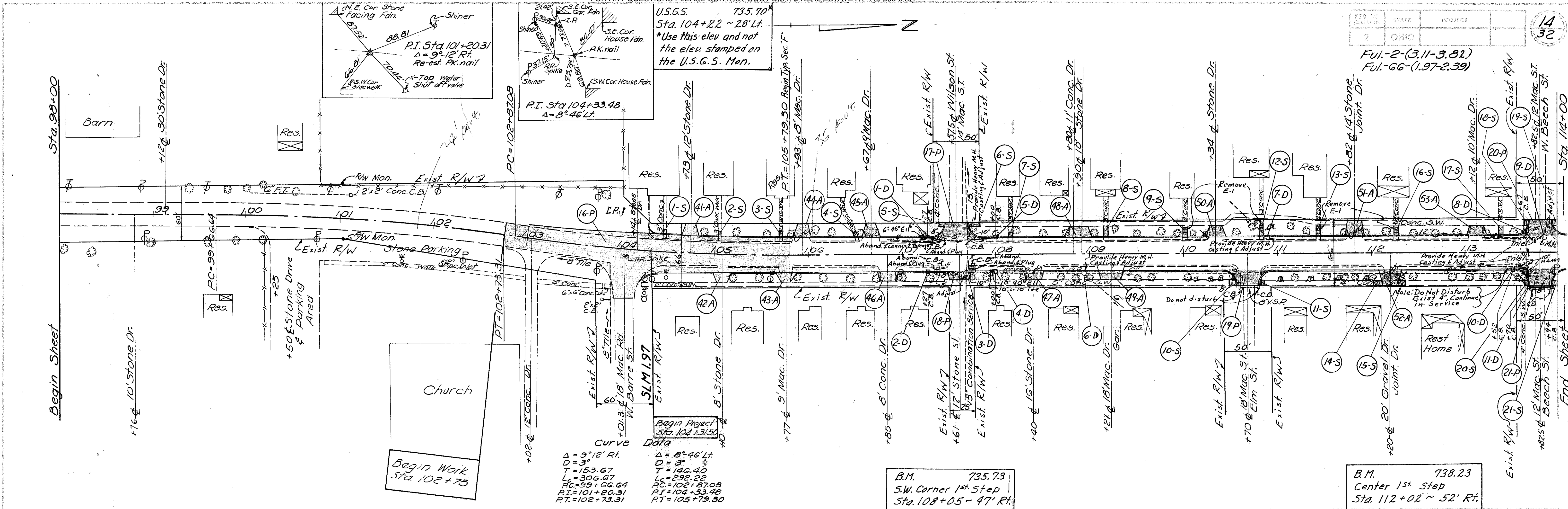
FED. RD. DISTRICT	STATE	PROJECT
2	OHIO	

13
32

Ful.-2-(3.11-3.81)
Ful.-66-(1.97-2.39)



Ful-2-(3.11-3.82)
Ful-66-(1.97-2.39)



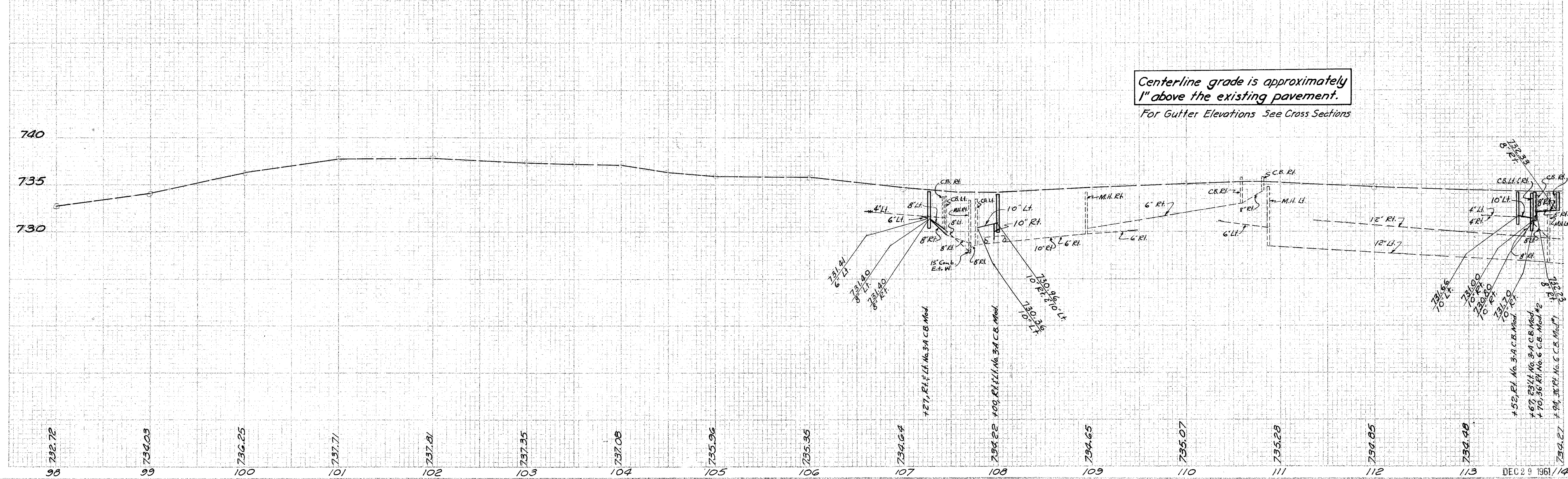
Curve Data

$\Delta = 9^{\circ}12' \text{ Rt.}$	$\Delta = 8^{\circ}46' \text{ Lt.}$
$D = 3'$	$D = 3'$
$T = 153.67$	$T = 146.40$
$L_c = 306.67$	$L_c = 292.22$
$PC = 99 + 66.64$	$PC = 102 + 87.08$
$PI = 101 + 20.31$	$PI = 104 + 33.48$
$PT = 102 + 73.31$	$PT = 105 + 79.30$

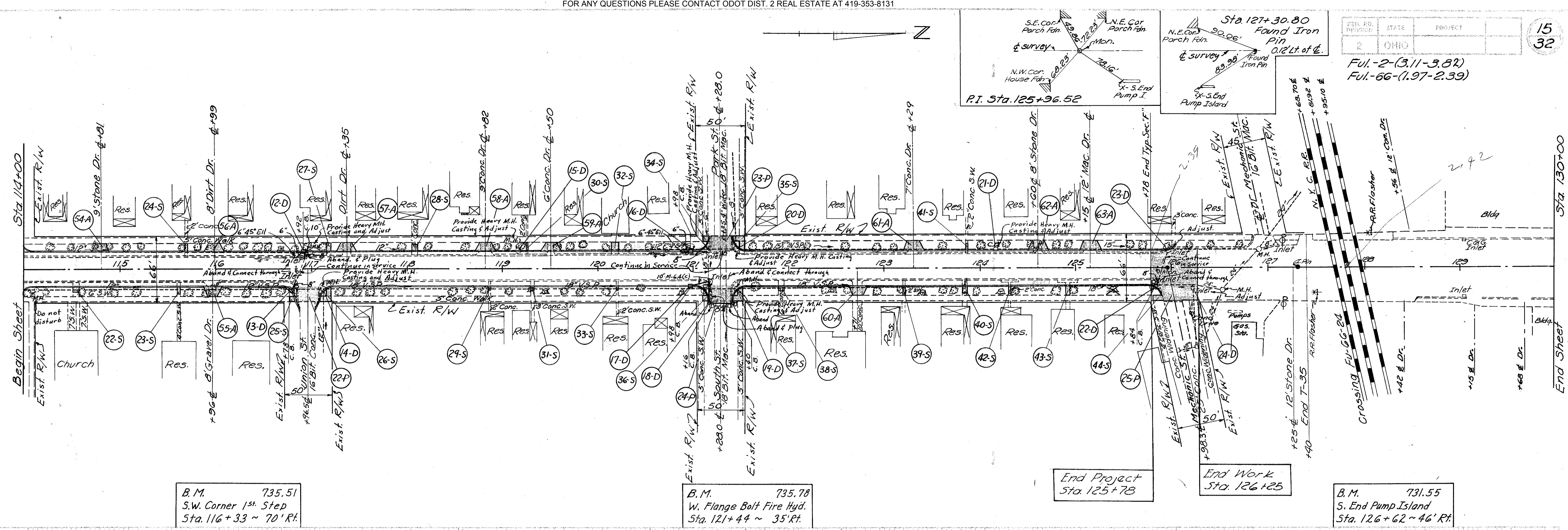
B.M. 735.73
S.W. Corner 1st Step
Sta. 108+05 ~ 47' Rt.

B.M. 738.23
Center 1st Step
Sta. 112+02 ~ 52' Rt.

Centerline grade is approximately
1" above the existing pavement.
For Gutter Elevations See Cross Sections



Ful.-2-(3.11-3.82)
Ful.-66-(1.97-2.39)



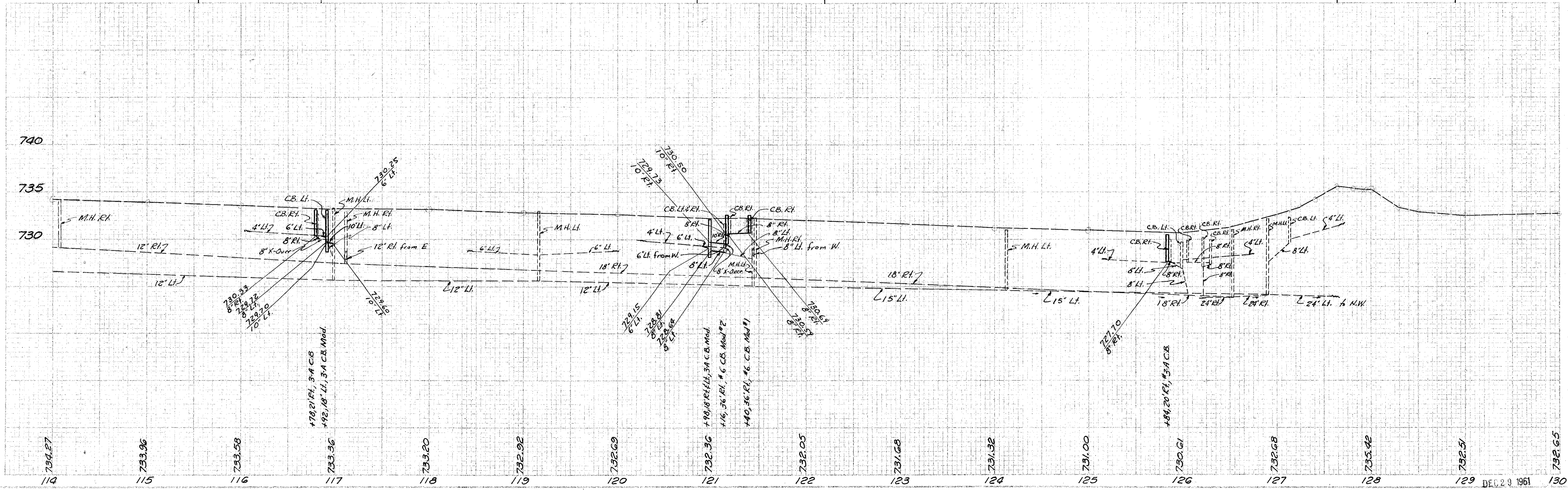
B.M. 735.51
S.W. Corner 1st Step
Sta. 116+33 ~ 70' Rt.

B.M. 735.78
W. Flange Bolt Fire Hyd.
Sta. 121+44 ~ 35' Rt.

End Project
Sta. 125+78

End Work
Sta. 126+25

B.M. 731.55
S. End Pump Island
Sta. 126+62 ~ 46' Rt.



Sta. 114 + 00 to Sta. 130 + 00 S.R.