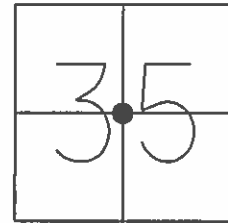


O.D.O.T. DISTRICT 2 SURVEY OFFICE (USE ONLY)

PERSONNEL _____ REFERENCE NO. 2 SHEET 2 OF 15

NOTES HOMAN DATE 5-30-12 ROUTE SR 2
 H.C. ROUSOS WEATHER SUNNY COUNTY FULTON
 R.C. HOMAN TEMP. 75° TOWNSHIP GERMAN
 _____ SECTION 35
 _____ T 7 N R 4 E

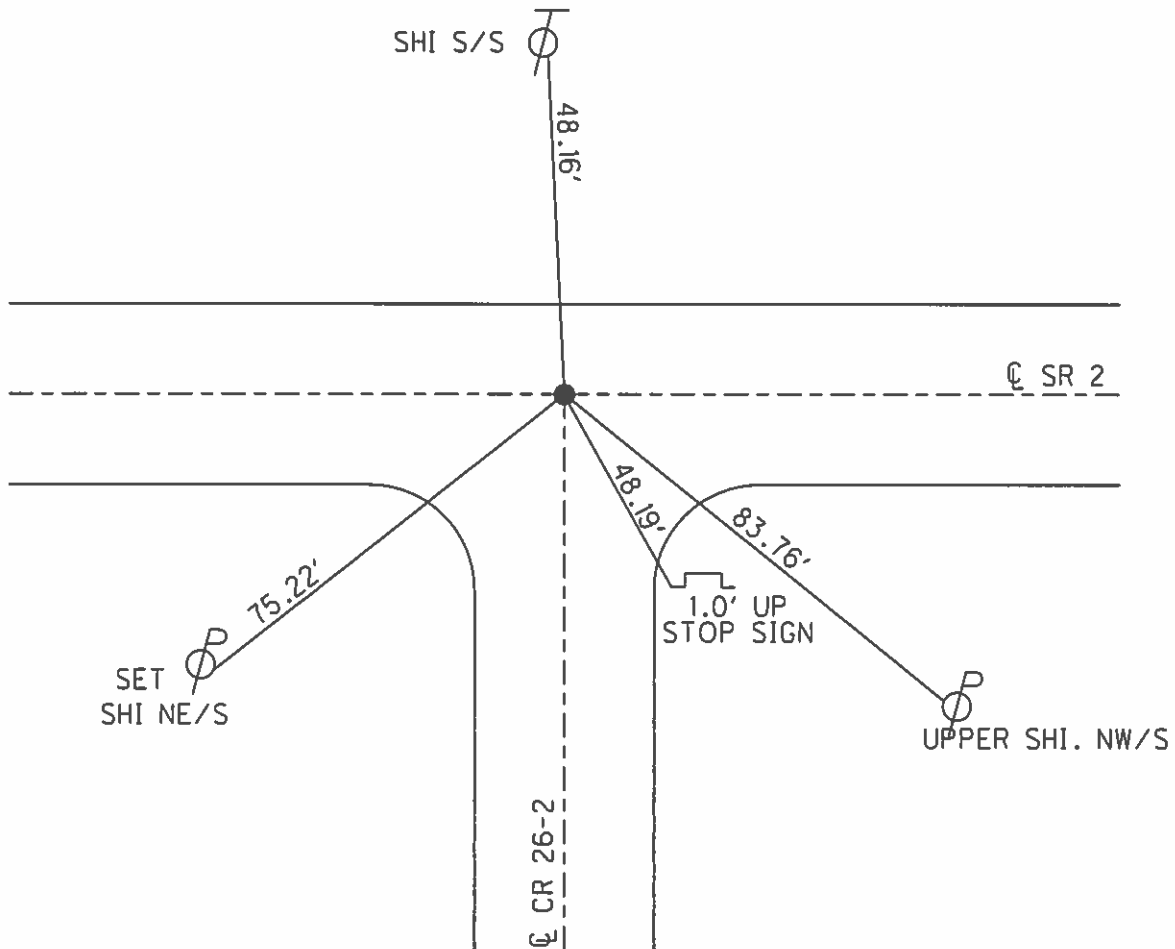
TYPE MONUMENT P.K./WASHER
 ON SURFACE - ~~BELOW~~ ON
~~LEFT~~ - ☉ PAV'T - ~~RIGHT~~ ON
11.7' TO N EDGE PAVEMENT
 S.L.M. 26+47



GRID: NORTHING: 681196.741 EASTING: 1456168.120

RECORD

SET P.K./WASHER
 9-3-96 M.R.C.
 SET PK/WASHER
 8-21-12 DCH



O.D.O.T. DISTRICT 2 SURVEY OFFICE

PERSONNEL

REFERENCE NO. 2

SHEET 2 OF 23

NOTES LOEHRKE

H.C. POUSAS

R.C. CANTERBURY

DATE 8-8-95

WEATHER CLOUDY

TEMP. +80°

ROUTE SR 2

COUNTY FULTON

TOWNSHIP GERMAN

SECTION 35

T₁ N R 4 E

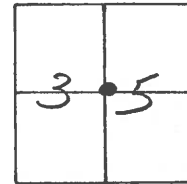
TYPE MONUMENT PK / WASHER

ON SURFACE - ~~BELOW~~ ON SURFACE

LEFT - CL PAV'T. - RIGHT CL PVMT

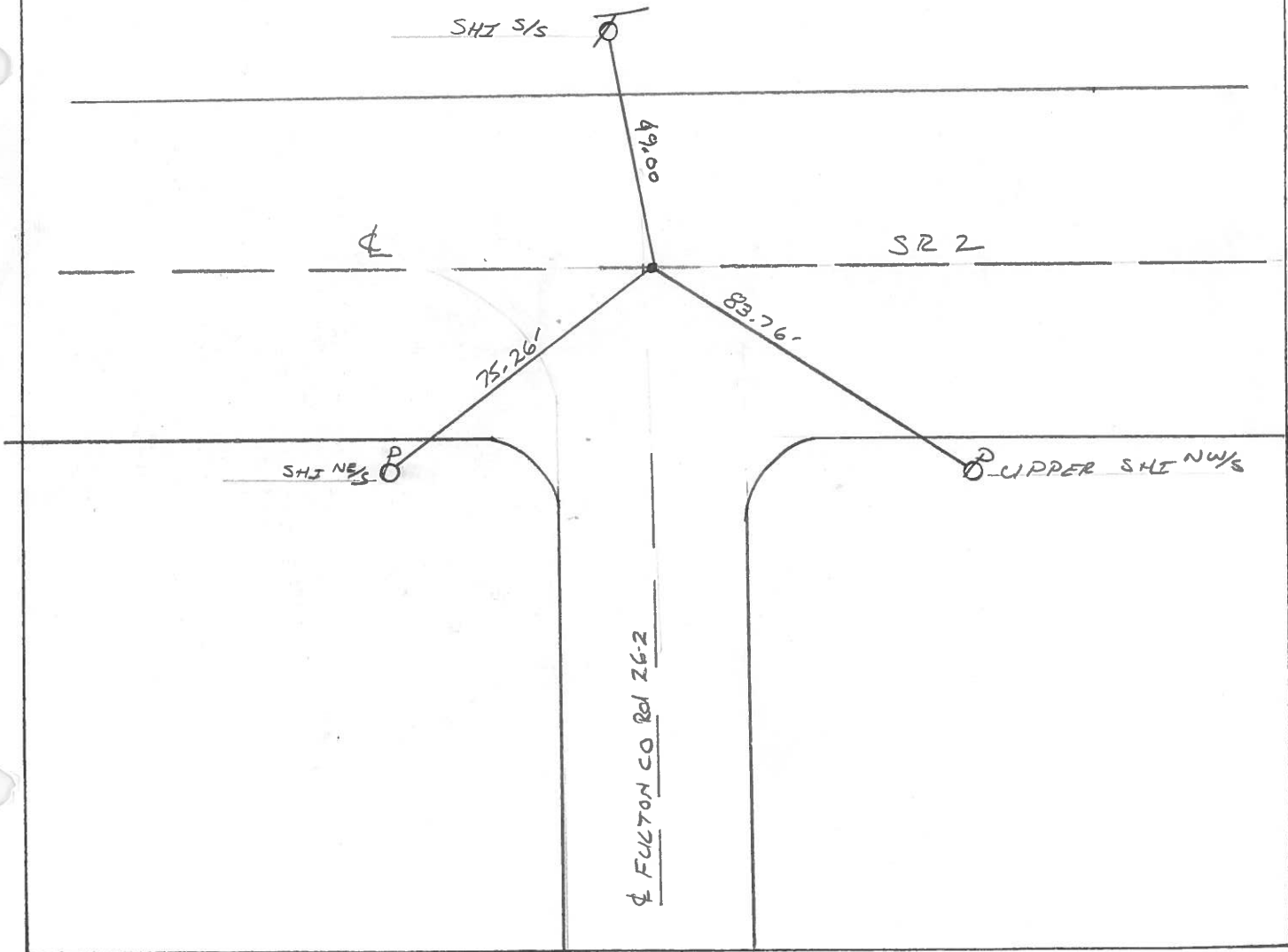
11.7 TO N EDGE PAVEMENT

S.L.M. 26+47



SET P.K. / WASHER

9-3-96 M.R.C.



County FULTON S.R. 2

Township GERMAN

Section 35

T7N, R4E

Personnel LOEHRKE TD

HOUSEHOLDER RC

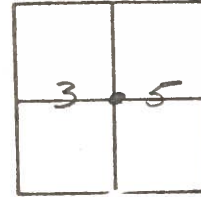
BARWISSEL HC

2

Date 7-3-84

Weather CLEAR

Temp. 78



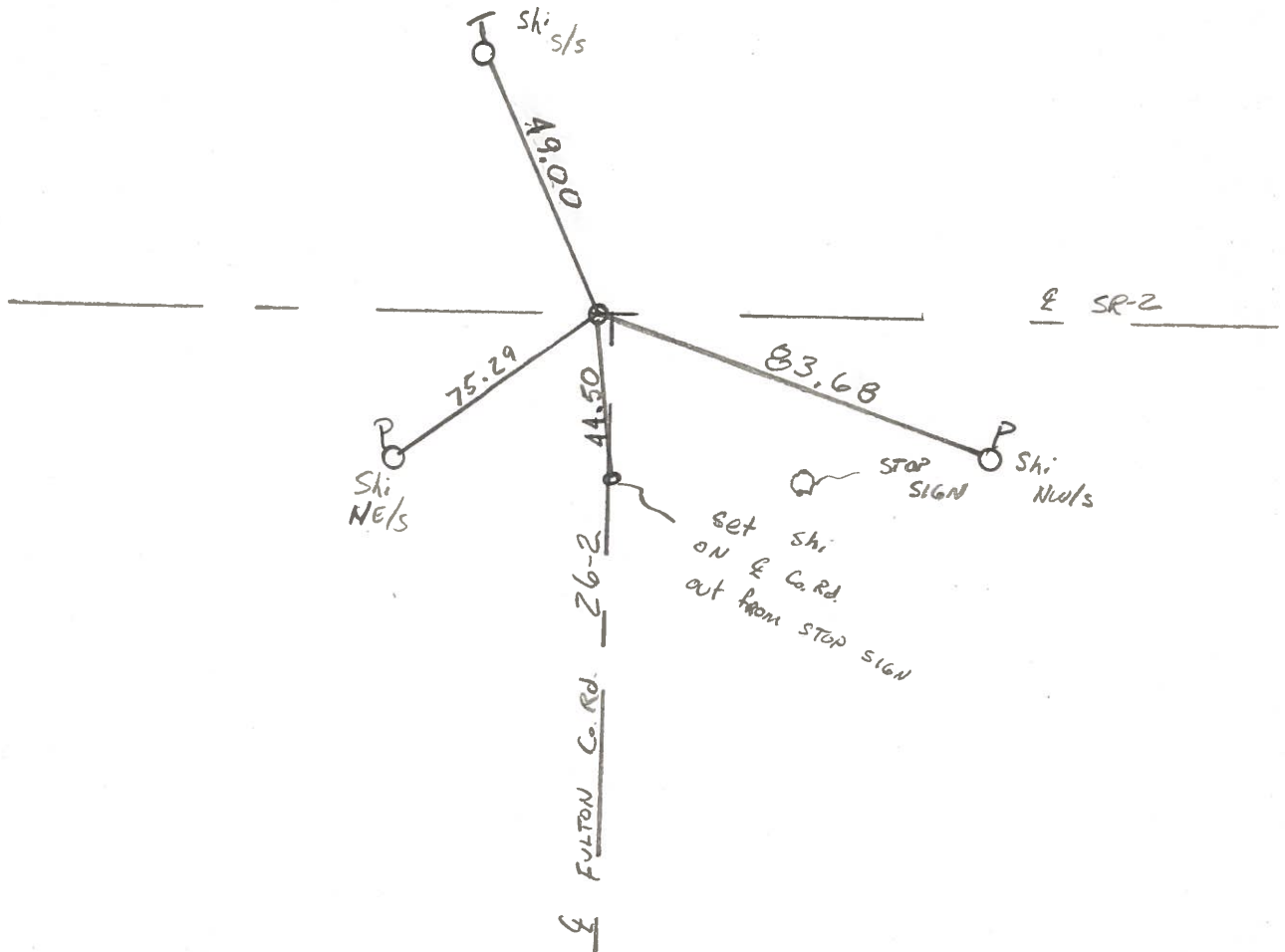
Fd. BRASS PLUG ON & SR2
 2" BELOW SURFACE
 10.5' to NEP SR2
 1.0' W of & Co. Rd. 26-2

SLM 26+44

SET P.K./WASHER

10-5-84

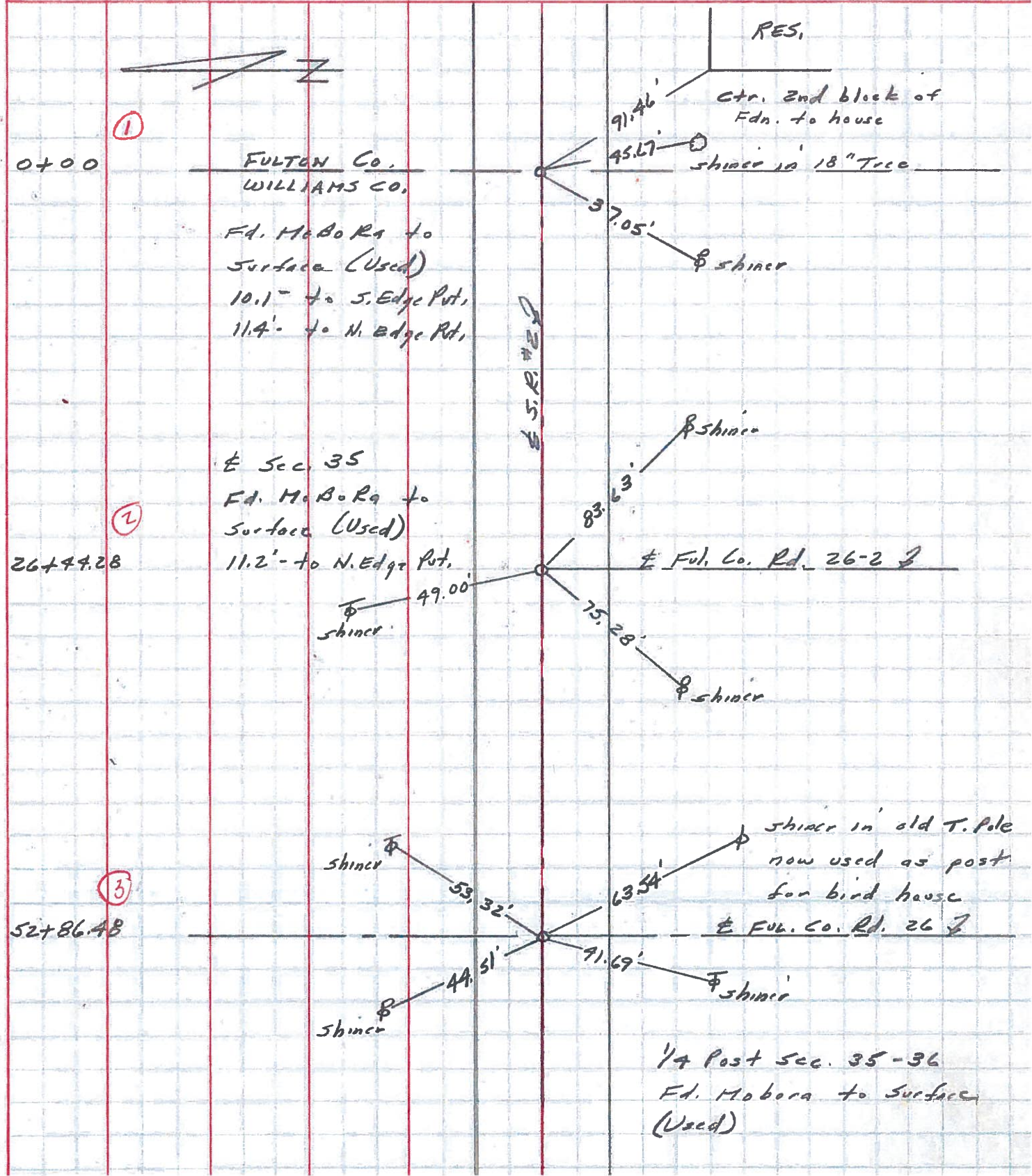
C.L.



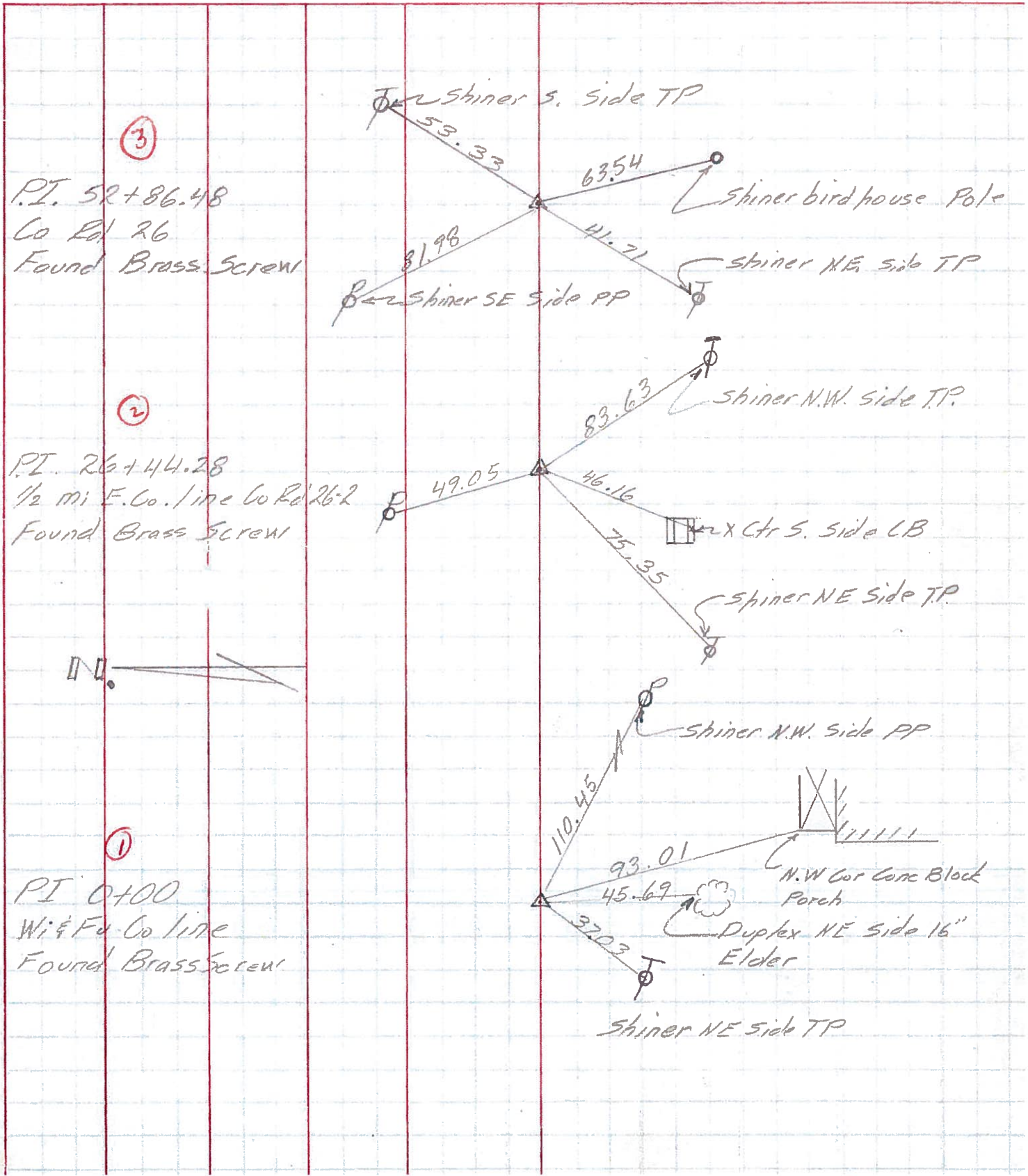
PERSONNEL	TITLE	PERSONNEL	TITLE
Stone	Notes		
Drano	H.C.		
Michalak	R.C.		

COUNTY Fulton Co. DATE 13 June 72
 S. R. # 2 WEATHER Cloudy
 SEC. Co. Line + Archbold TEMP. 74°

DESCRIPTION References to Control Points JOB NO. _____
 LEFT CENTER LINE RIGHT

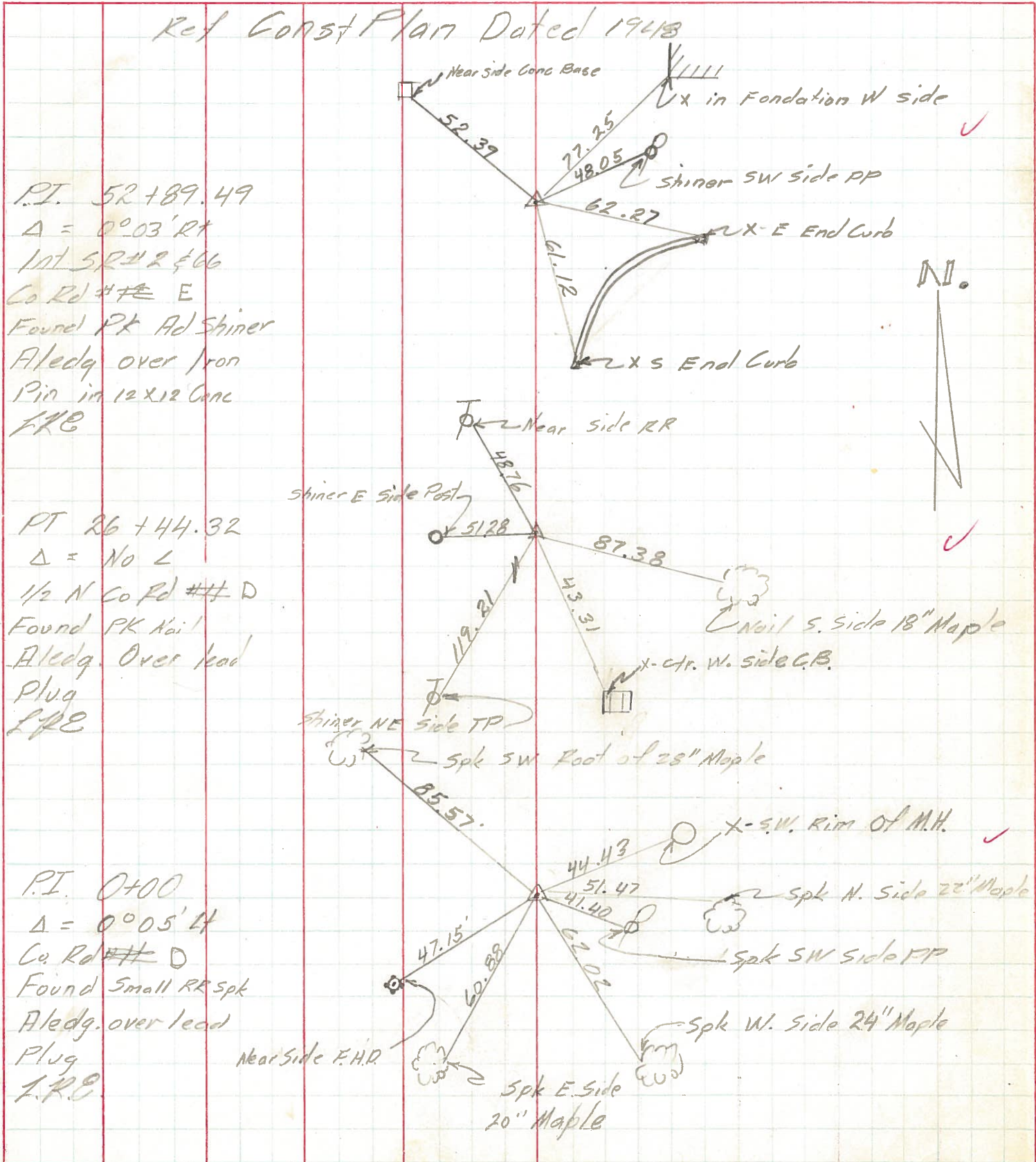


PERSONNEL	TITLE	PERSONNEL	TITLE	COUNTY	DATE
Louis		Brindley		Fulton	7/1/71
Eriksen				S. R. # 2	WEATHER Fair
Rau				SEC. Wi & Fu. Latine to inter	TEMP. 80°
Budenhop				2566' Archbold	
DESCRIPTION Rewitness to control points					JOB NO.



PERSONNEL TITLE PERSONNEL TITLE COUNTY FV DATE 6/14/71
Lovys _____
Eriksen Recorder _____ S. R. # R & G6 WEATHER Cloudy
Pav. _____
Spain _____ SEC. Archbold to 207 TEMP. 75°
 DESCRIPTION Rewitness to Control Points JOB NO. _____

LEFT CENTER LINE RIGHT



Ref Const Plan Dated 1948
 P.I. 52+89.49
 $\Delta = 0^{\circ}03'RT$
 Int SR# R & G6
 Co Rd # ~~E~~ E
 Found PK Ad Shiner
 Aledg over Iron
 Pin in 12x12 Conc
 IRE

PT 26+44.32
 $\Delta = No \angle$
 1/2 N Co Rd # ~~D~~ D
 Found PK Nail
 Aledg. Over lead
 Plug
 IRE

P.I. 0+00
 $\Delta = 0^{\circ}05'LT$
 Co Rd # ~~D~~ D
 Found Small RR Spk
 Aledg. over lead
 Plug
 IRE



PERSONNEL TITLE PERSONNEL TITLE

COUNTY *Fulton*

DATE *OK-1-22-58*

S. R. # *Z*

Silvester OK 12-12-58

W. Maps OK 10-26-61

Louy's 7-17-63

SEC.

TEMP.

DESCRIPTION

LEFT

CENTER LINE

RIGHT

JOB NO.

Sta. 0+00
County Line
Brass screw

#131
①

Near Side
County Sign

89.89'
46.37'

N.W. cor. conc. block pars

Shiner in 6" Elder
Duplex N.E. side

42.17'
37.03'

Shiner

83.55'

Shiner

Sta. 26+44.28
Brass screw

#132
②

49.05'
Shiner

75.35'

Shiner

Sta. 52+86.48
Brass screw

#133
③

S. side T pole
Near Side
Holler S. side
81.95'
Shiner

54.1'
63.50'

Shi in birdhouse pole

41.75'

Shiner

Sta. 79+81.10
Brass screw

#134
④

Nail
Shiner 20' maple
Shi. 20' Maple
55.48'
Shiner 20' maple
Nail S.W. side 18" Mahla

76.77'
40.28'

38.45'

Shiner