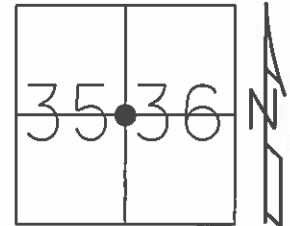


O.D.O.T. DISTRICT 2 SURVEY OFFICE (USE ONLY)

PERSONNEL _____ REFERENCE NO. 3 SHEET 3 OF 15
 NOTES HOMAN DATE 5-30-12 ROUTE SR 2
 H.C. ROUSOS WEATHER SUNNY COUNTY FULTON
 R.C. HOMAN TEMP. 75° TOWNSHIP GERMAN
 _____ SECTION 36
 _____ T 7 N R 4 E

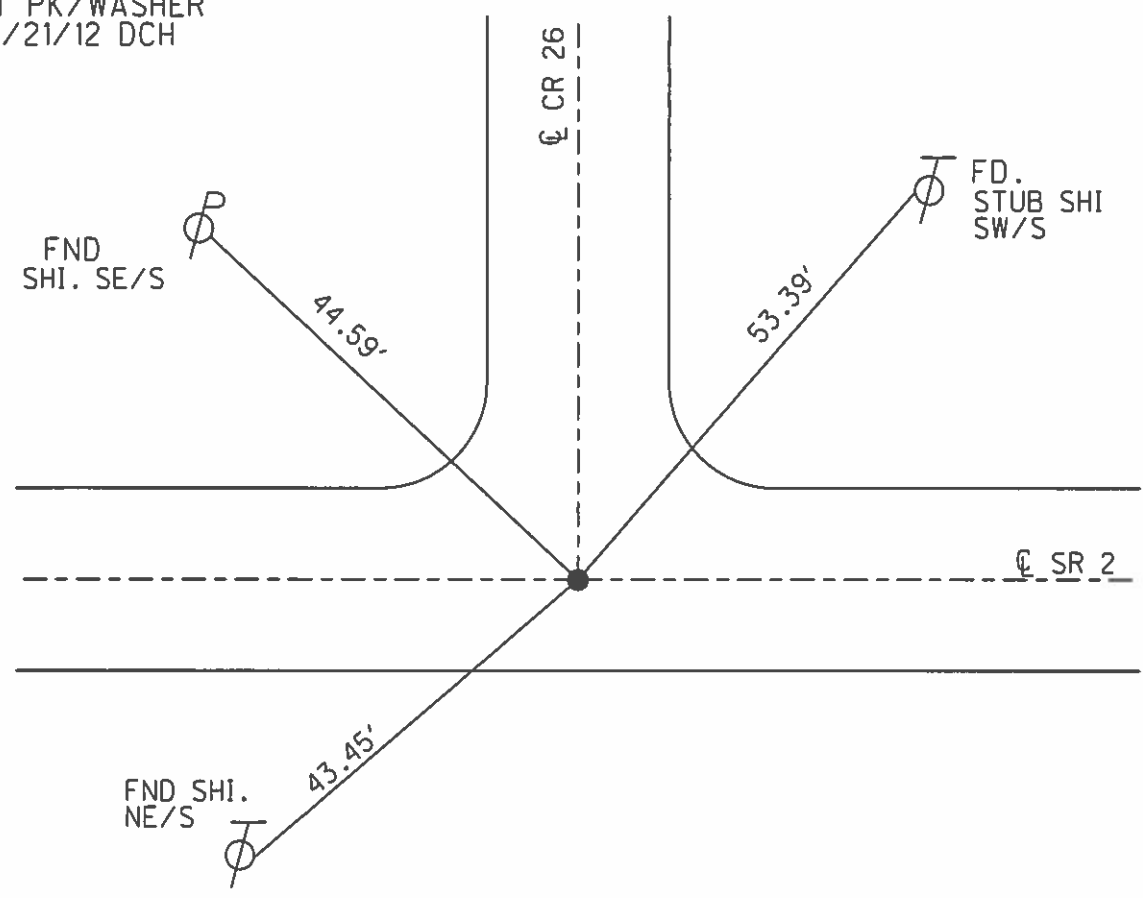
TYPE MONUMENT P.K./WASHER
 ON SURFACE - ~~BELOW~~ ON
~~LEFT~~ - ☉ PAV'T - ~~RIGHT~~ ON
 - TO - EDGE PAVEMENT
 S.L.M. 52+92



GRID: NORTHING: 681164.038 EASTING: 1458810.138

RECORD

SET P.K./WASHER
 9-3-96 M.R.C.
 SET PK/WASHER
 8/21/12 DCH



O.D.O.T. DISTRICT 2 SURVEY OFFICE

PERSONNEL _____

REFERENCE NO. 3

SHEET 3 OF 23

NOTES LOEHRKE

H.C. Roads

DATE 8-8-95

ROUTE SR 2

R.C. CANTERBURY

WEATHER CLOUDY

COUNTY FULTON

TEMP. +80°

TOWNSHIP GERMAN

SECTION 36

T 7 N R 4 E

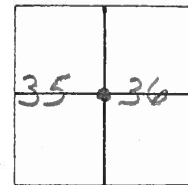
TYPE MONUMENT PK/WASHER

ON SURFACE -BELOW ON SURFACE

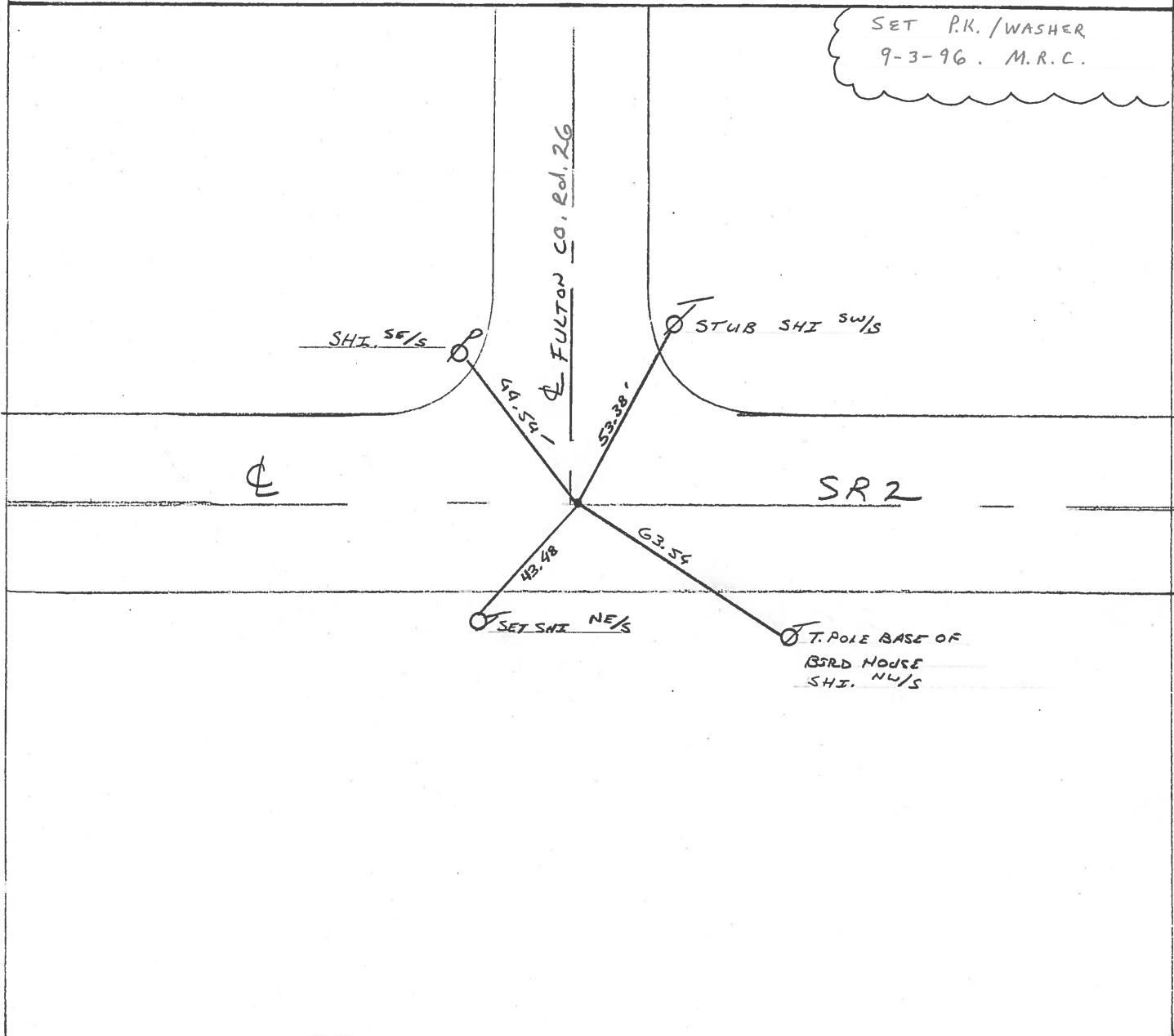
LEFT-☉ PAV'T. - RIGHT ☉ OF PYMT

— TO — EDGE PAVEMENT

S.L.M. 52+92



SET P.K./WASHER
9-3-96. M.R.C.



County FULTON S.R. 2

Township GERMAN

Section 36

T1N, R4E

Personnel LOEHRKE

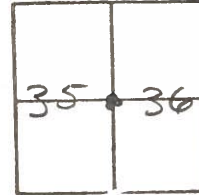
HOUSEHOLDER

BARBY

Date 7-3-84

Weather CLEAR

Temp. +80



#3

Fd PK SHANK 1" BELOW SURFACE

ON & SR 2

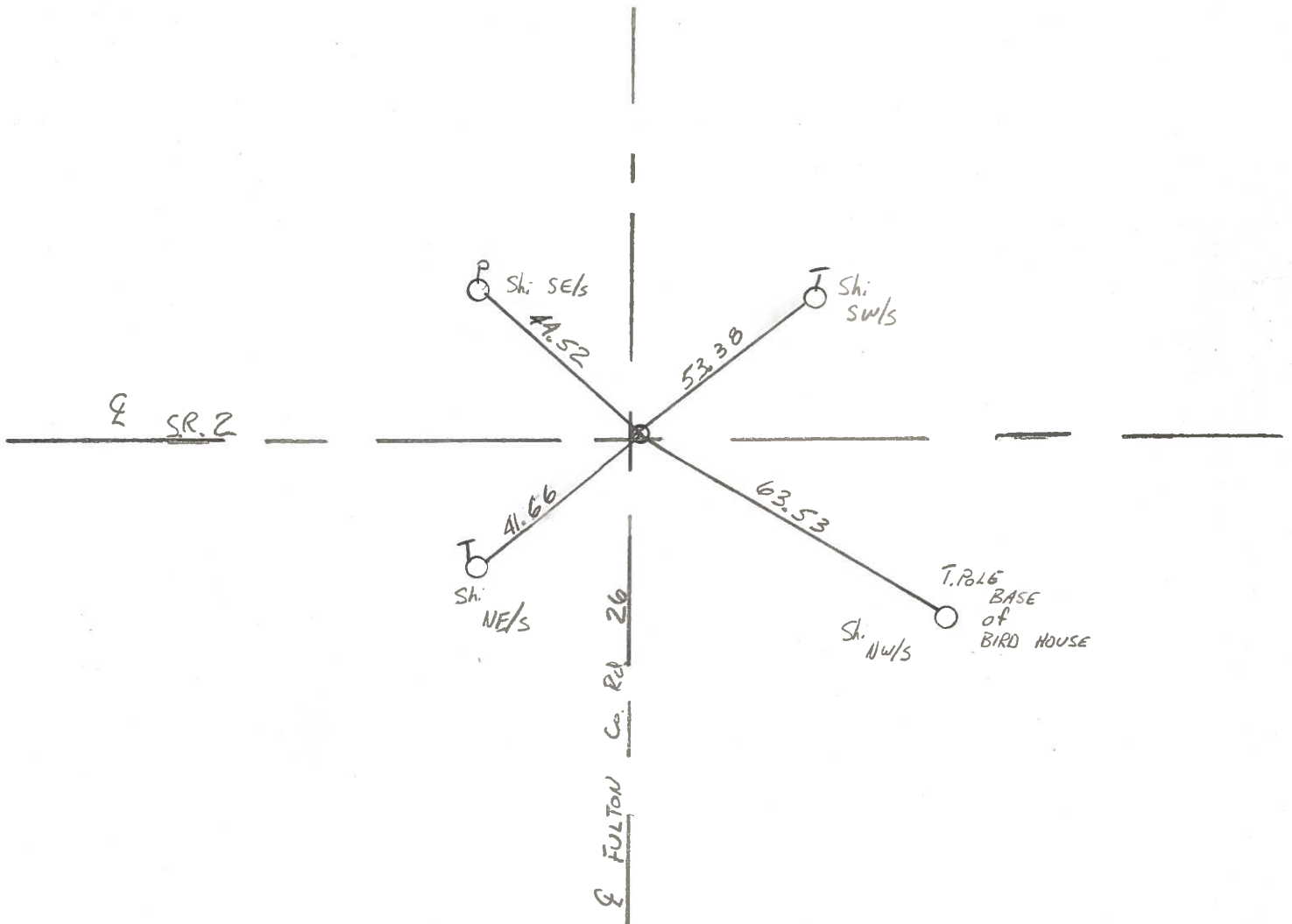
1' E of Co. Rd 26

SLIN 52+86.48

SET PK/WASHER

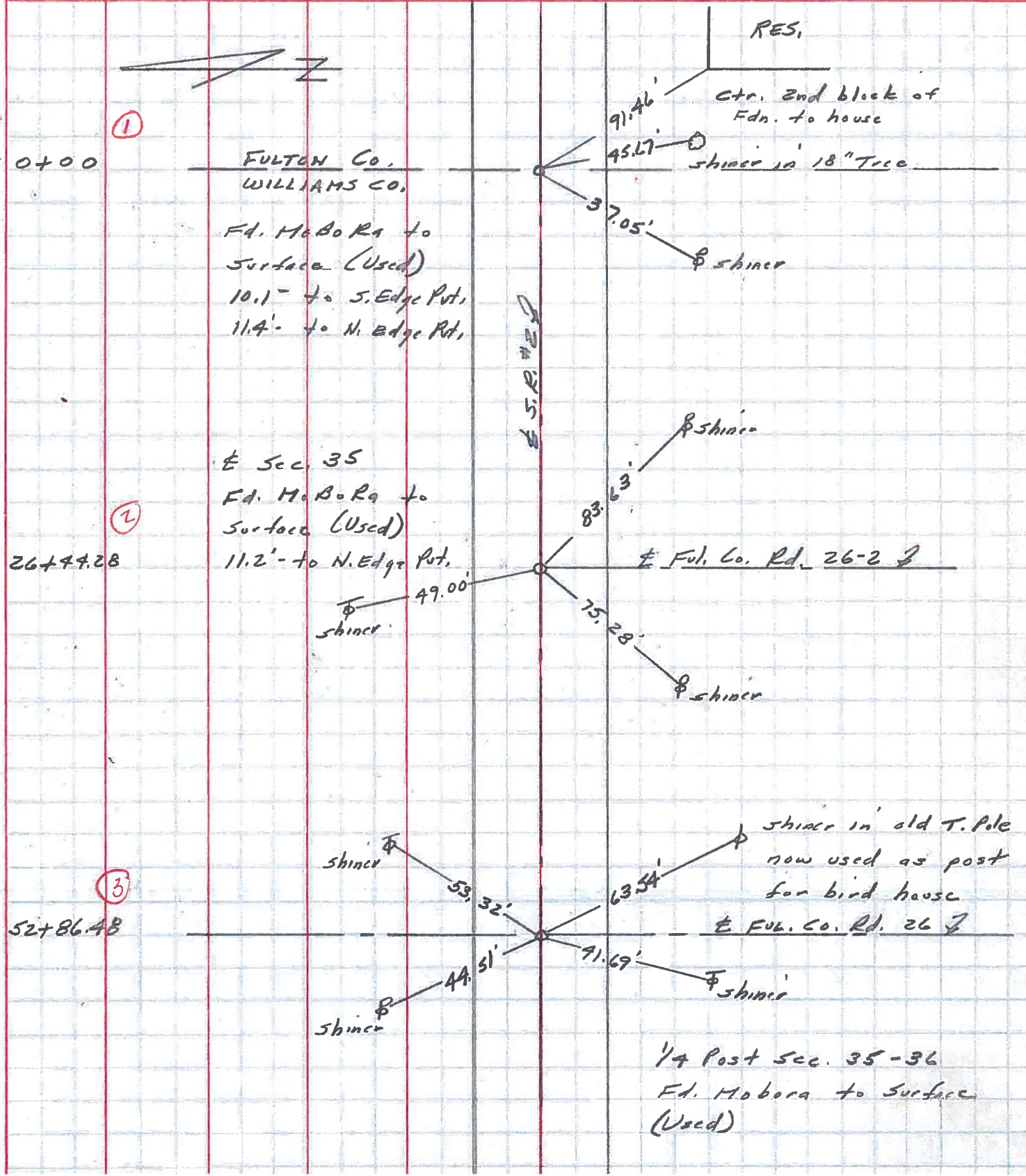
10-5-84

C.L.

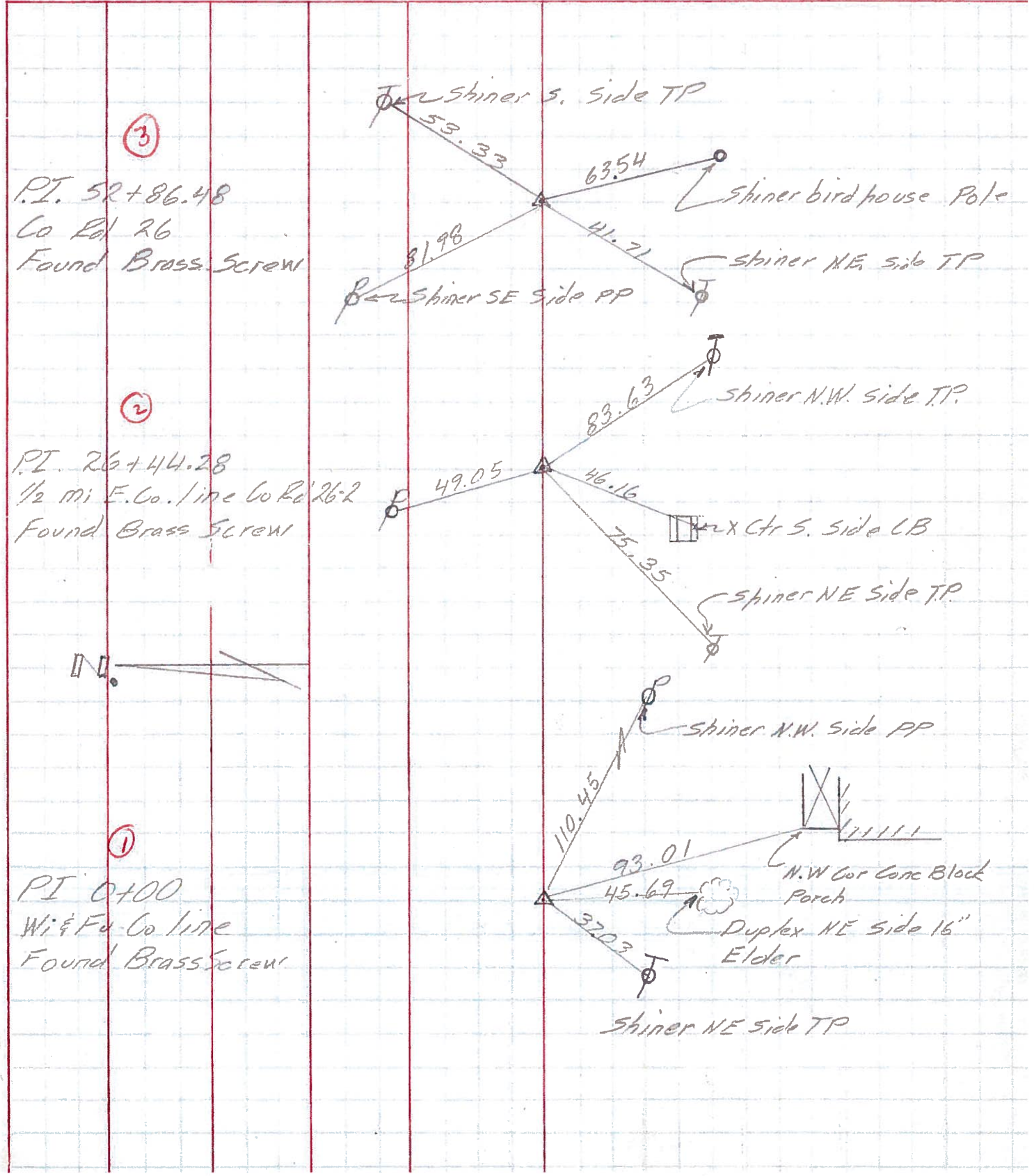


PERSONNEL	TITLE	PERSONNEL	TITLE	COUNTY	DATE
Stone	Notes			Fulton Co.	13 June 72
Donno	H.C.			S. R. #2	WEATHER Cloudy
Michalak	P.C.			SEC. Co. Line + Archbold	TEMP. 74°

DESCRIPTION References to Control Points JOB NO.



PERSONNEL	TITLE	PERSONNEL	TITLE	COUNTY	DATE
Louise Eriksen		Brindley		Fulton	7/1/71
Rav				S. R. # 2	WEATHER Fair
Budenhop				SEC. Wi & Fu. Co. line to inter 2 566' Arambold	TEMP. 80°
DESCRIPTION Rewitness to Central points				JOB NO.	



③
 P.I. 52+86.48
 Co Rd 26
 Found Brass Screw

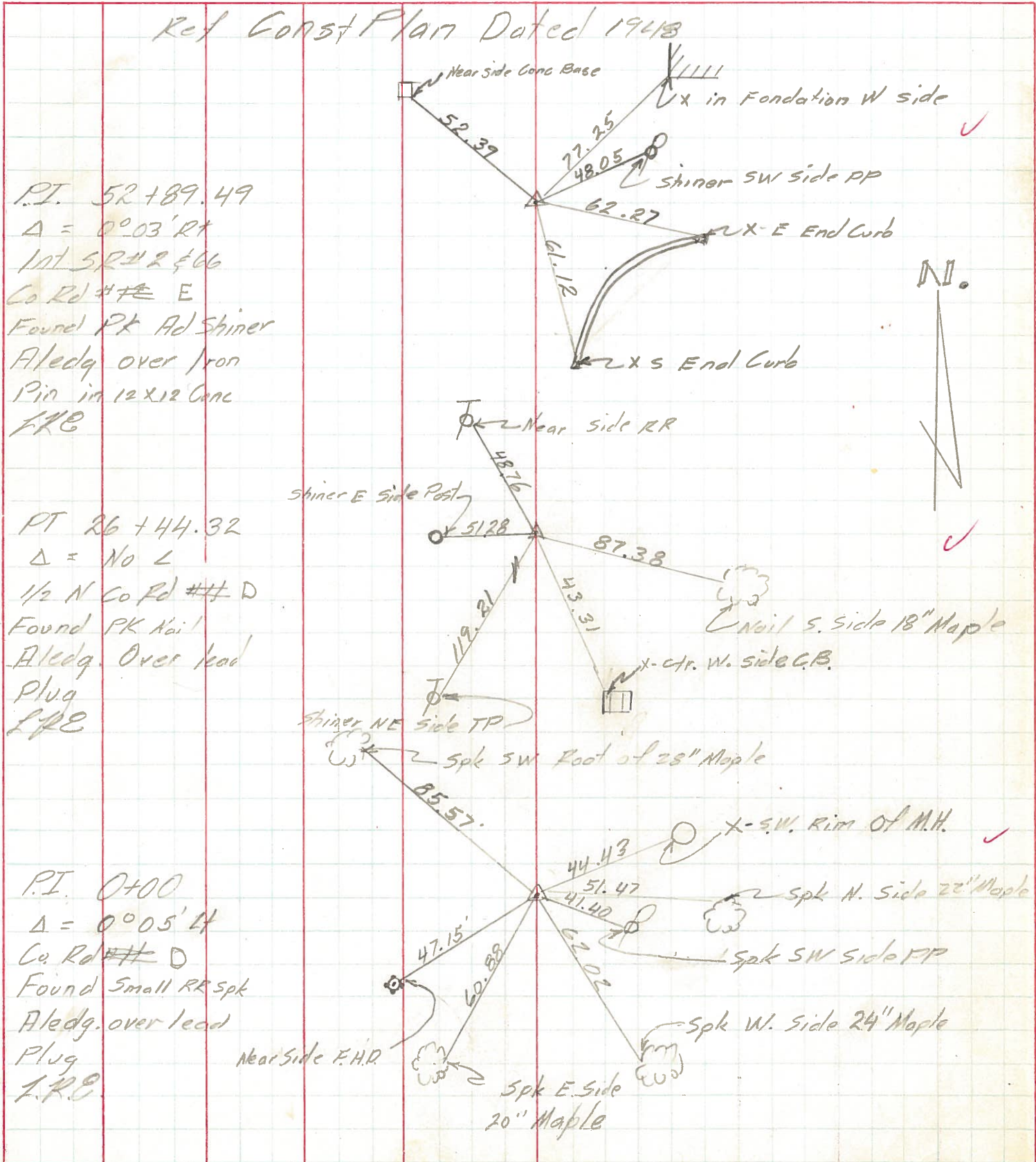
②
 P.I. 26+44.28
 1/2 mi E. Co. line Co Rd 26-2
 Found Brass Screw

①
 P.I. 0+00
 Wi & Fu. Co. line
 Found Brass Screw



PERSONNEL TITLE PERSONNEL TITLE COUNTY FV DATE 6/14/71
Lovys _____
Eriksen Recorder _____ S. R. # R & G6 WEATHER Cloudy
Pav. _____
Spain _____ SEC. Archbold to 2047 TEMP. 75°
 DESCRIPTION Rewitness to Control Points JOB NO. _____

LEFT CENTER LINE RIGHT



PERSONNEL TITLE PERSONNEL TITLE

COUNTY Fulton

DATE OK-1-22-58

Silvester O.K. 12-12-58

S. R. # Z

W. P. P. O.K. 10-26-61

WEATHER

Louy's 7-17-63

SEC.

TEMP.

DESCRIPTION

LEFT

CENTER LINE

RIGHT

JOB NO.



Sta. 0+00
County line
Brass screw

#131
①

Near Side
County Sign

89.89'
92.93'

46.77'

N.W. cor. conc. block para

Shiner in 6" Elder
Duplex N.E. side

42.17'
37.03'

Shiner

83.63'
83.55'

Shiner

Sta. 26+44.28
Brass screw

#132
②

49.05'
49.00'

Shiner

75.35'
75.30'

Shiner

Sta. 52+86.48
Brass screw

#133
③

S. side T. pole

Near Side

Holder

52.26'

81.95'

45.63'

Shiner

54'
63.50'

Shi in birdhouse pole

41.75'

Shiner

Sta. 79+31.10
Brass screw

#134
④

Nail
Shiner 20' maple

76.77'
76.78'

Shi. 20' Maple

55.48'

55.48'

73.13'

38.33'

Shiner

Shiner 20' maple
Nail S.W. side 18" Mahla