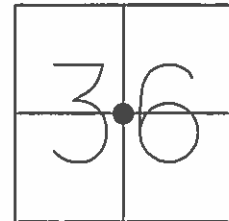


O.D.O.T. DISTRICT 2 SURVEY OFFICE (USE ONLY)

PERSONNEL _____ REFERENCE NO. 4 SHEET 4 OF 15
 NOTES HOMAN DATE 5-30-12 ROUTE SR 2
 H.C. ROUSOS WEATHER SUNNY COUNTY FULTON
 R.C. HOMAN TEMP. 75° TOWNSHIP GERMAN
 SECTION 36
T 7 N R 4 E

TYPE MONUMENT P.K./WASHER
 ON SURFACE - ~~BELOW~~ ON
 LEFT - ☉ PAV'T - ~~RIGHT~~ 0.7'
10.7' TO LT EDGE PAVEMENT
 S.L.M. 79+39

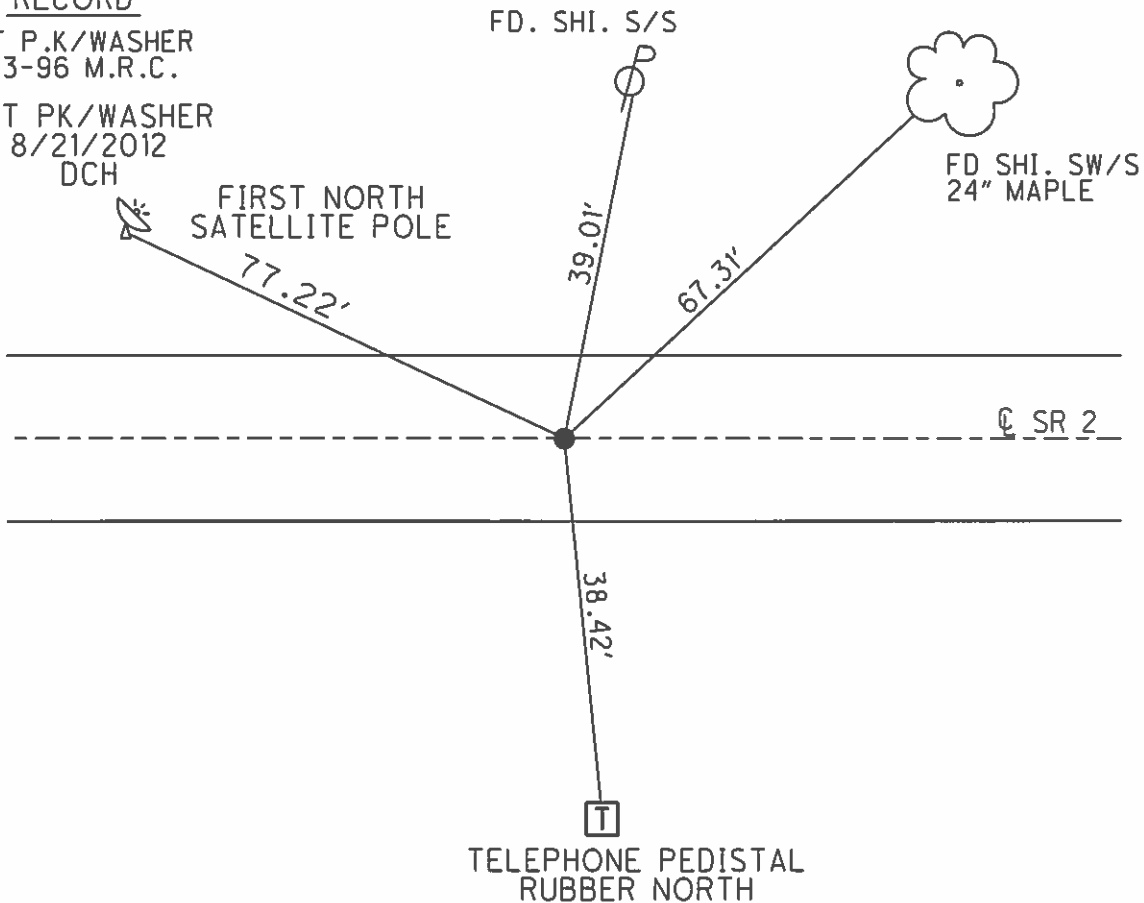


GRID: NORTHING: 681142.535 EASTING: 1461454.078

RECORD

SET P.K./WASHER
 9-3-96 M.R.C.

SET PK/WASHER
 8/21/2012
 DCH



O.D.O.T. DISTRICT 2 SURVEY OFFICE

PERSONNEL

REFERENCE NO. 4

SHEET 4 OF 23

NOTES LOEHRKE

H.C. ROUSOS

R.C. CANTERBURY

DATE 8-8-95

WEATHER CLOUDY

TEMP. +78°F

ROUTE S.R. 2

COUNTY FULTON

TOWNSHIP GERMAN

SECTION 36

T 7 N R 4 E

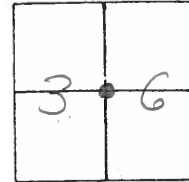
TYPE MONUMENT PK/WASHER

ON SURFACE - ~~BELOW~~ ON SURFACE

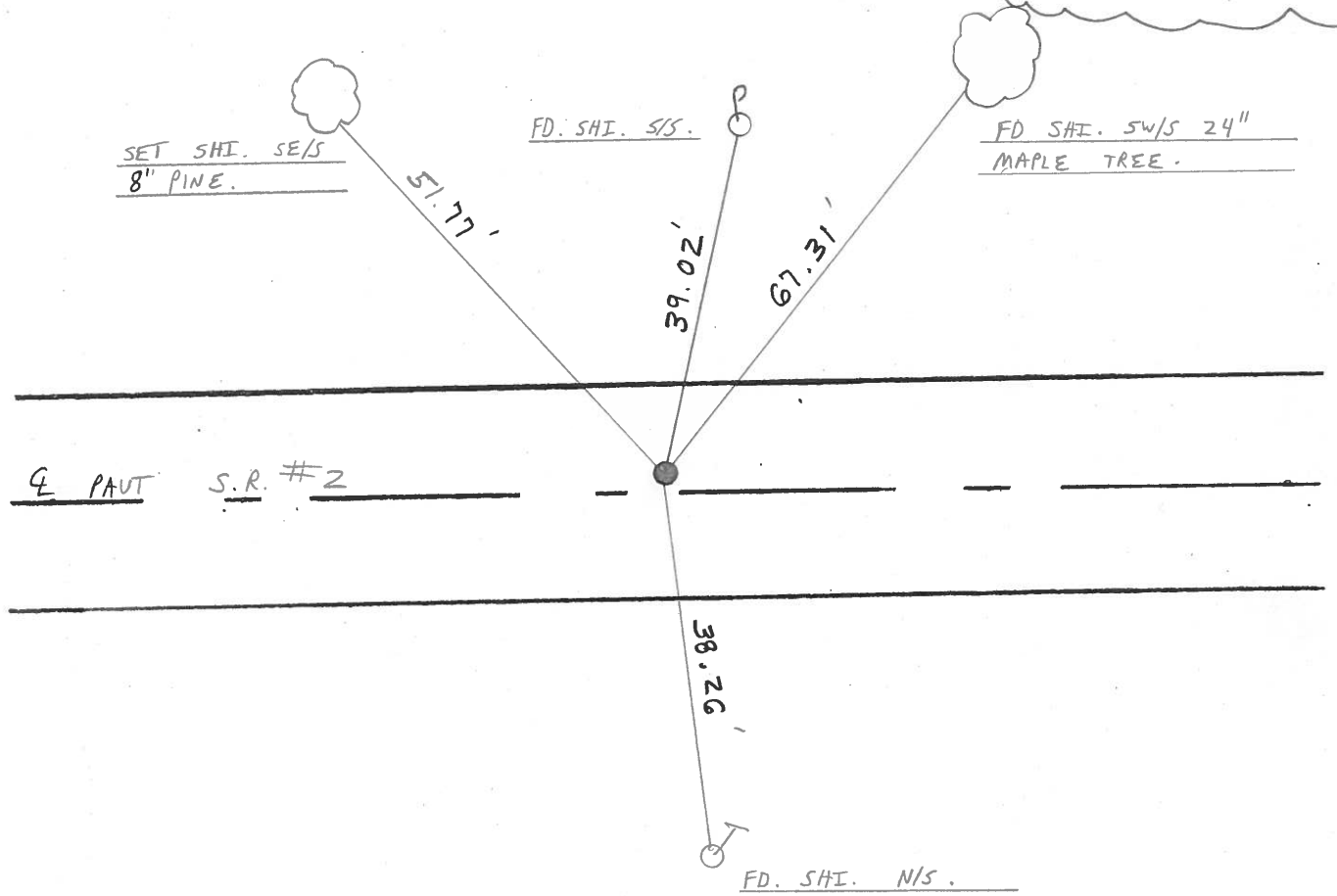
LEFT-☉ PAVT. - RIGHT 0.7' LT ☉ PAVT

10.7' TO LT EDGE PAVEMENT

S.L.M. 79+39



SET P.K./WASHER
9-3-96. M.R.C.



County FULTON S.R. 2

Date 7-3-84

Township GERMAN

Weather CLEAR

Section 36

Temp. +81

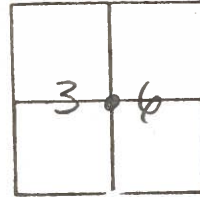
T7N, R4E

Personnel LOEHRKE TD

HOUSEHOLDER RC

BARNÉY HC

4



Fd PK. Shank 1/2" Below SURF.

SLM 79130

10.1 to NEP

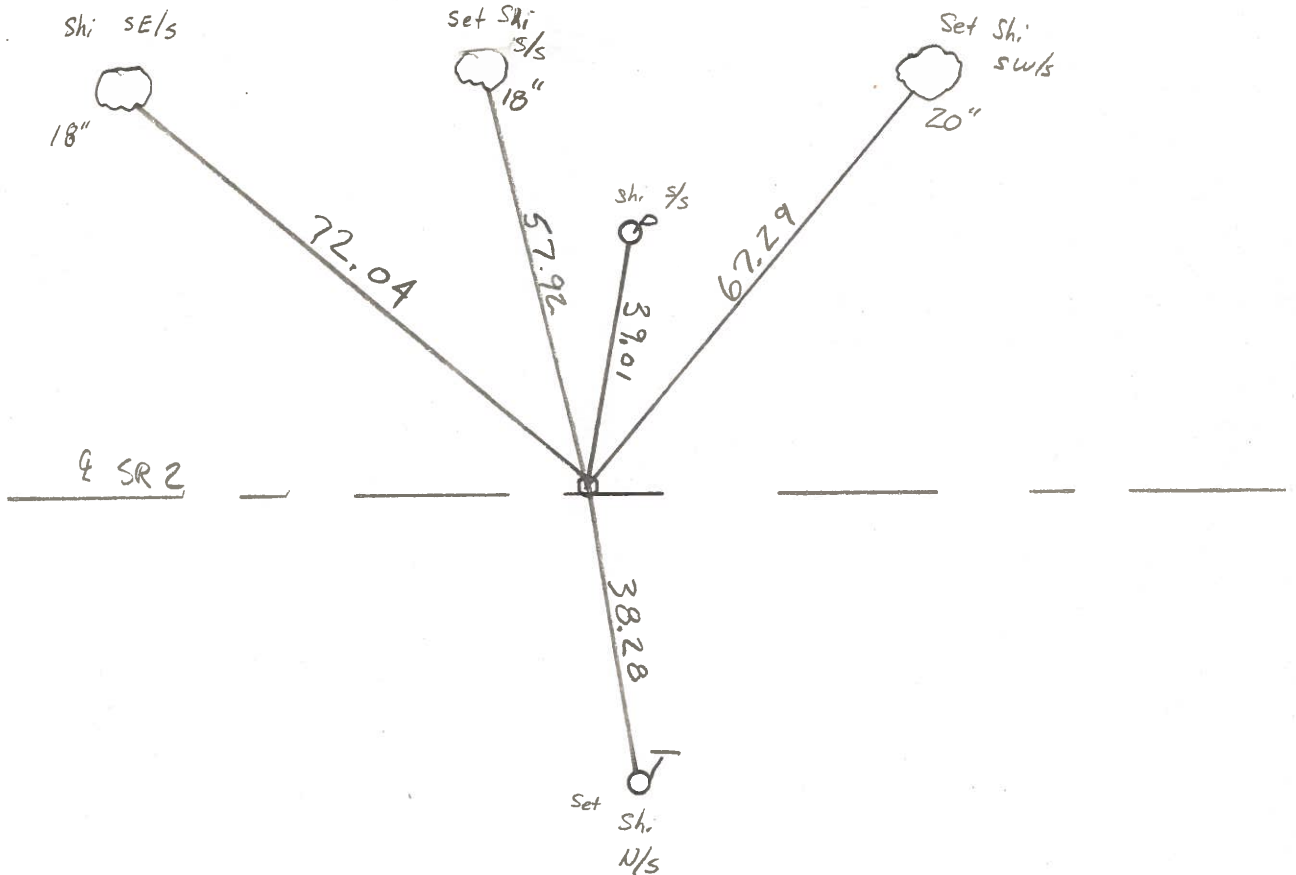
SET PK/WASHER

10.9 to SEP

10-5-84

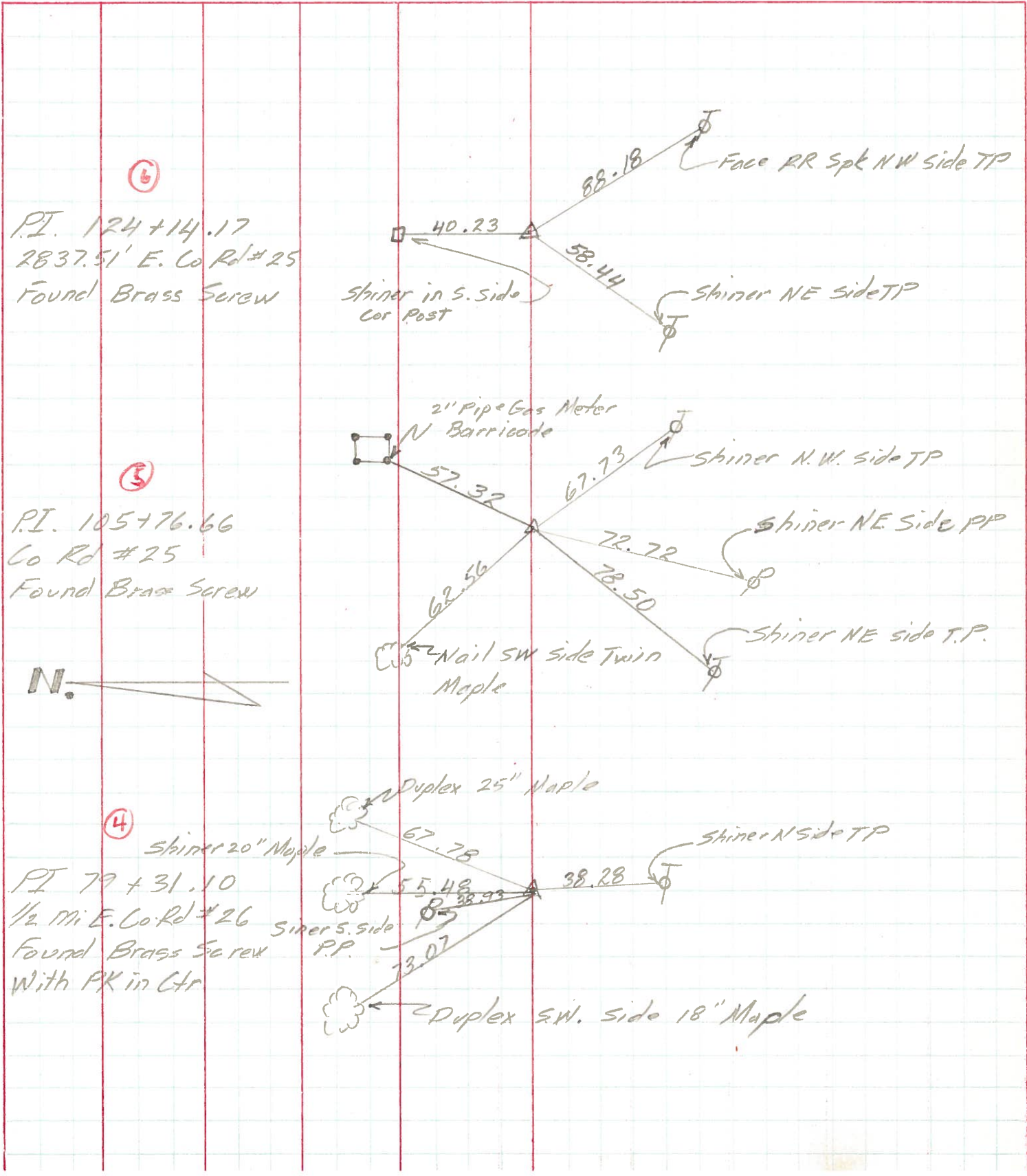
ON & SR 2

C.I.



PERSONNEL	TITLE	PERSONNEL	TITLE	COUNTY	DATE	WEATHER	TEMP.
Lovus				FV	7/1/71	Fair	80°
Eriksen				S. R. # 2			
Pav				SEC. W. E. Co line to int 2E66			
Bodehop							

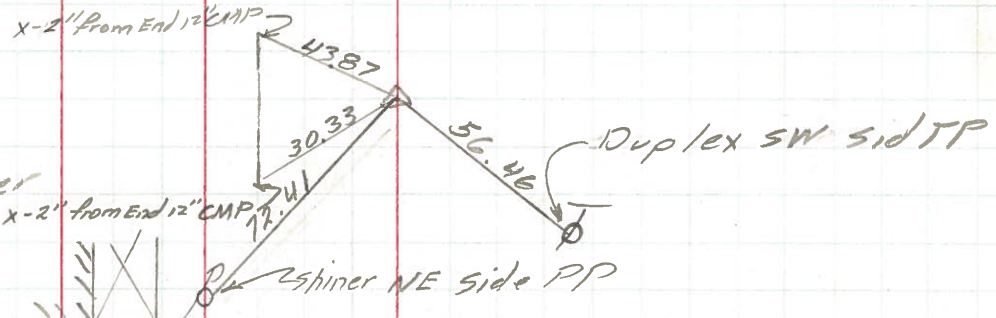
DESCRIPTION Rewit pass to Control points JOB NO. _____



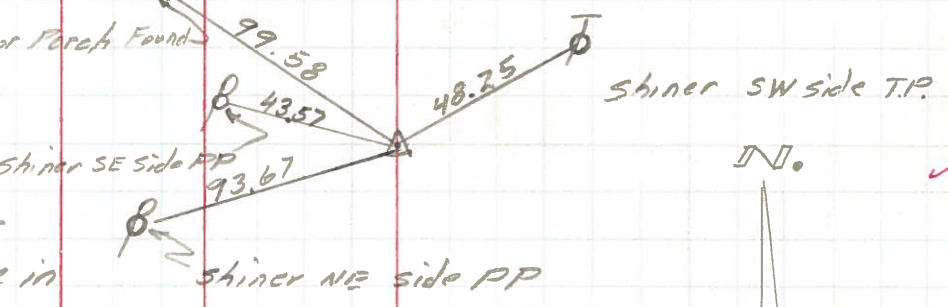
PERSONNEL	TITLE	PERSONNEL	TITLE	COUNTY	DATE
<u>Louys</u>		<u>Badenhop</u>		<u>FV</u>	<u>6/15/71</u>
<u>Eriksen</u>	<u>Recorder</u>			S. R. # <u>2 & 66</u>	WEATHER <u>Cloudy</u>
<u>Pou</u>				SEC. <u>Prehbold to 20A</u>	TEMP. <u>75°</u>
<u>Shaw</u>				DESCRIPTION <u>Re Witness to Control Points</u>	JOB NO. _____

Ref Const Plan Dated 1948

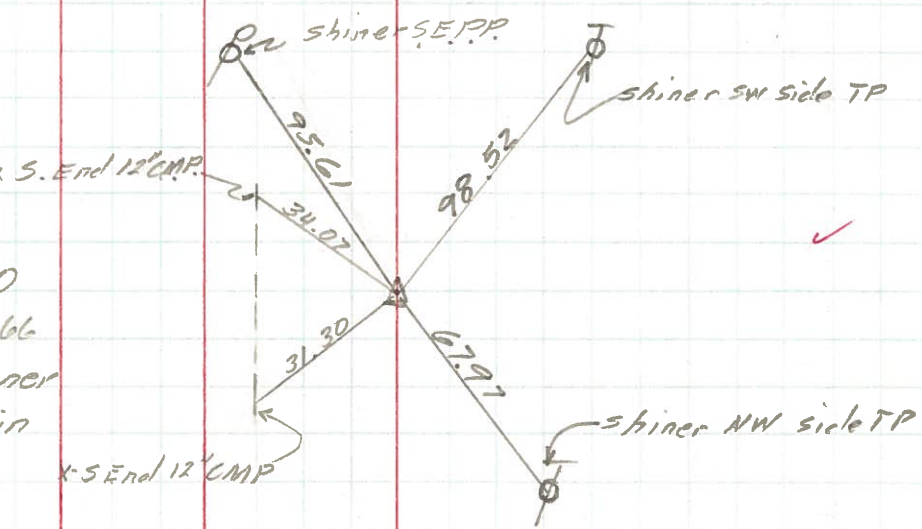
PI 132+19.8
 1/2 mi N. Co Rd # 3 F
 Found PK Nail Shiner
 F&E



PI 105+78.29
 Co Rd # 3 F
 Found PK 1/2 Shiner
 Aledq. Over Stone in
 Mon Box
 F&E



PI 79+32.30
 1/2 Not Int. SR 2 & 66
 Found PK Nail Shiner
 Aledq. Over Stone in
 Mon Box
 F&E



PERSONNEL TITLE PERSONNEL TITLE

COUNTY *Fulton*

DATE *OK-1-22-58*

Silvester OK 12-12-58

S. R. # *2*

WEATHER *11 Temp. 10-26-61*

SEC.

Louy's 7-17-63

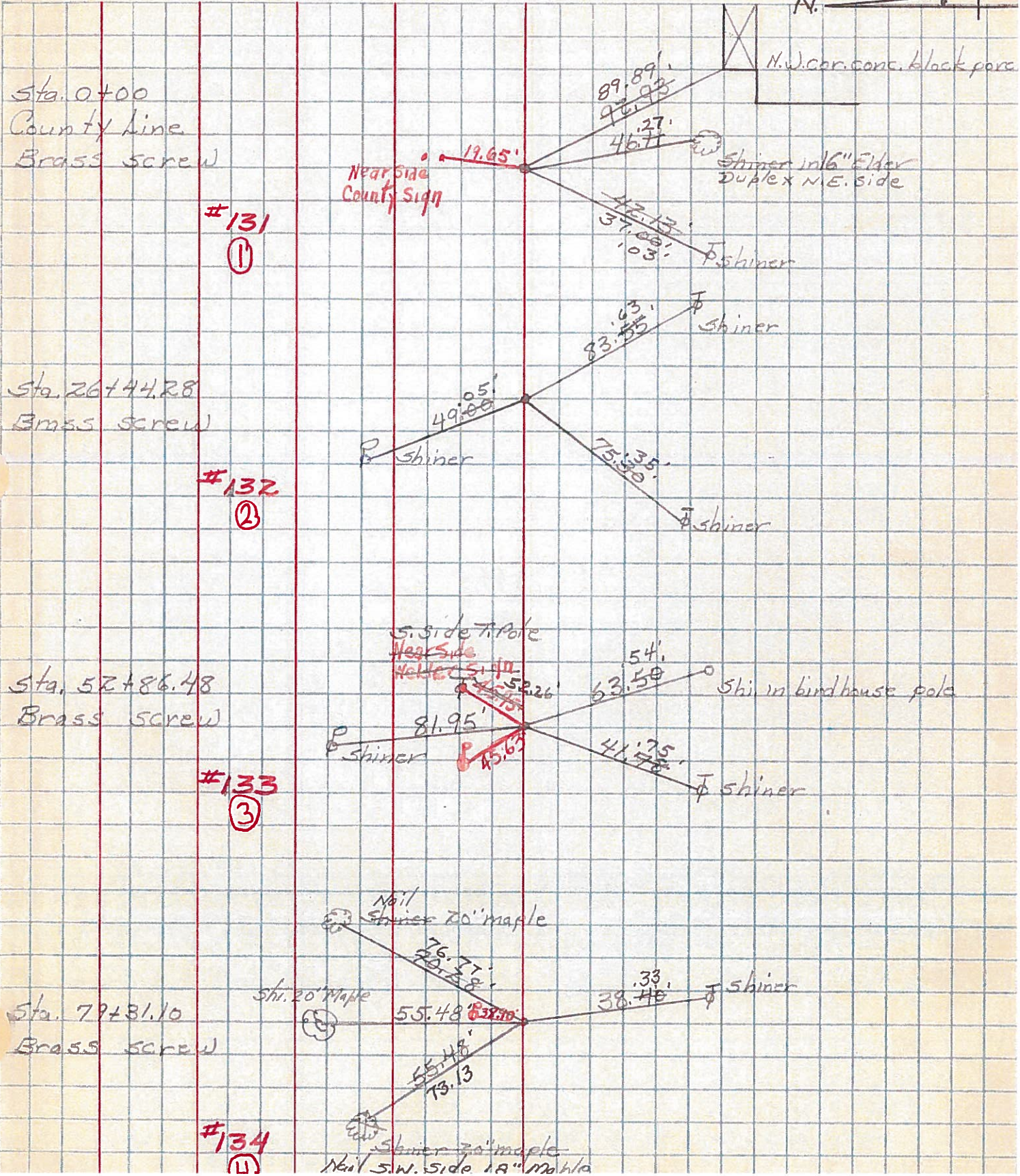
JOB NO.

DESCRIPTION

LEFT

CENTER LINE

RIGHT



Sta. 0+00
County Line
Brass screw

#131
①

Sta. 26+44.28
Brass screw

#132
②

Sta. 52+86.48
Brass screw

#133
③

Sta. 79+81.10
Brass screw

#134
④

Near Side
County Sign

N.W. cor. conc. block pers.

Shiner in 6" Elder
Duplex N.E. side

Shiner

Shiner

Shiner

Shiner

S. side pole
Near Side
Holler

Shi in birdhouse pole

Shiner

Shiner

Nail
Shiner 20' maple

Shi. 20' maple

Shiner

Shiner 20' maple
Nail S.W. Side 18" maple