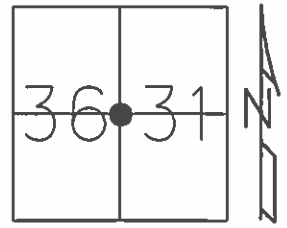


O.D.O.T. DISTRICT 2 SURVEY OFFICE (USE ONLY)

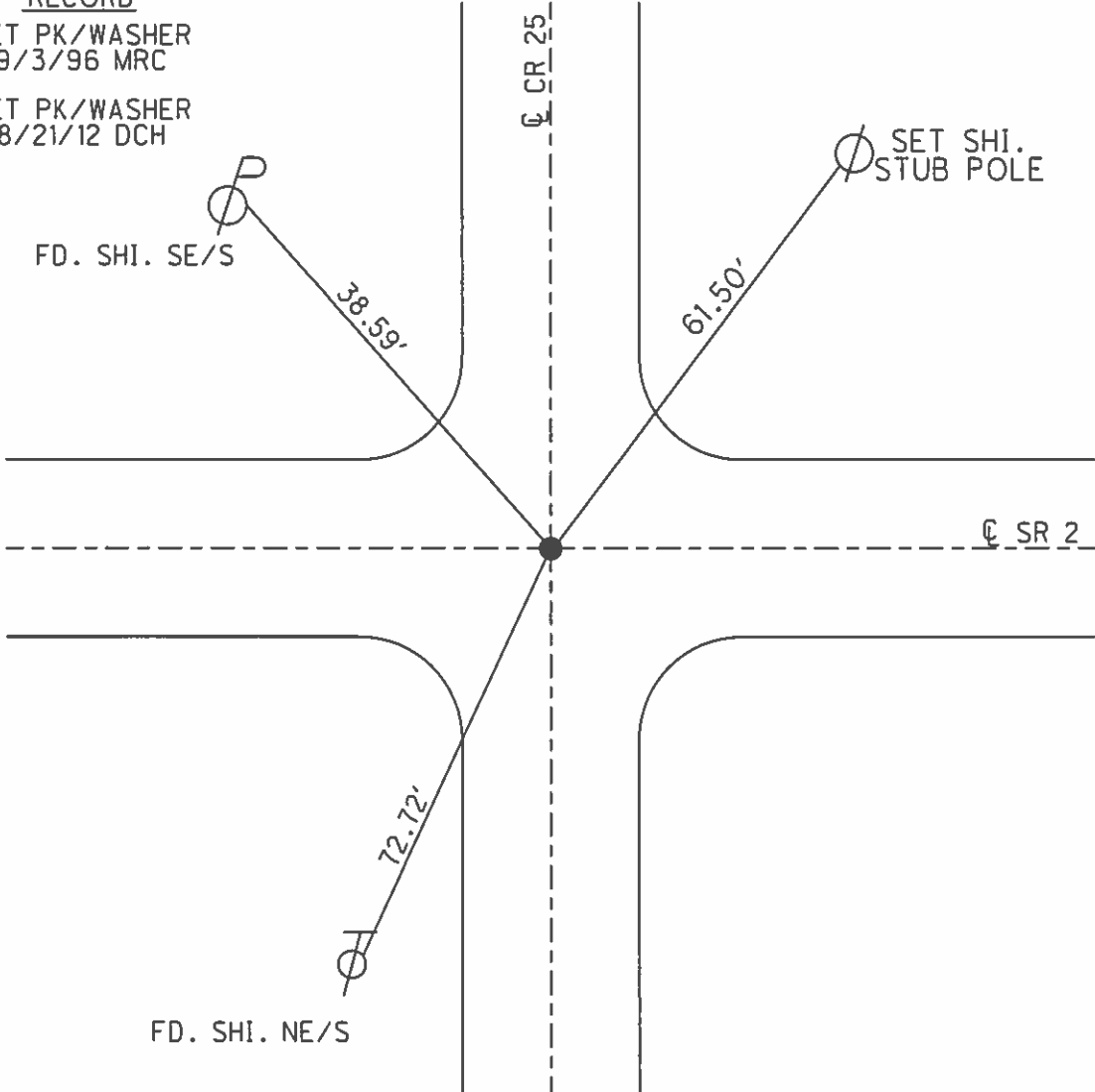
PERSONNEL _____ REFERENCE NO. 5 SHEET 5 OF 15

NOTES HOMAN DATE 5/30/12 ROUTE SR 2
 H.C. ROUSOS WEATHER SUNNY COUNTY FULTON
 R.C. HOMAN TEMP. 75° TOWNSHIP GERMAN
 SECTION 31
T 7 N R 4 E

TYPE MONUMENT P.K./WASHER
 ON SURFACE - ~~BELOW~~ ON
~~LEFT~~ - ☉ PAV'T - ~~RIGHT~~ ON
- TO - EDGE PAVEMENT
 S.L.M. 105+88
 GRID: NORTHING: 681117.742 EASTING: 1464099.768



RECORD
 SET PK/WASHER
 9/3/96 MRC
 SET PK/WASHER
 8/21/12 DCH



O.D.O.T. DISTRICT 2 SURVEY OFFICE

PERSONNEL _____

REFERENCE NO. 5

SHEET 5 OF 23

NOTES LOEHKE

H.C. ROUSOS

R.C. CANTERBURY

DATE 8-8-95

WEATHER CLOUDY

TEMP. +78° F

ROUTE S.R. #2

COUNTY FULTON

TOWNSHIP GERMAN

SECTION 31

T 7 N R 4 E

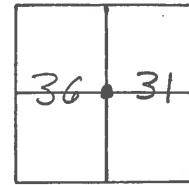
TYPE MONUMENT PK / WASHER

ON SURFACE - ~~BELOW~~ ON SURFACE

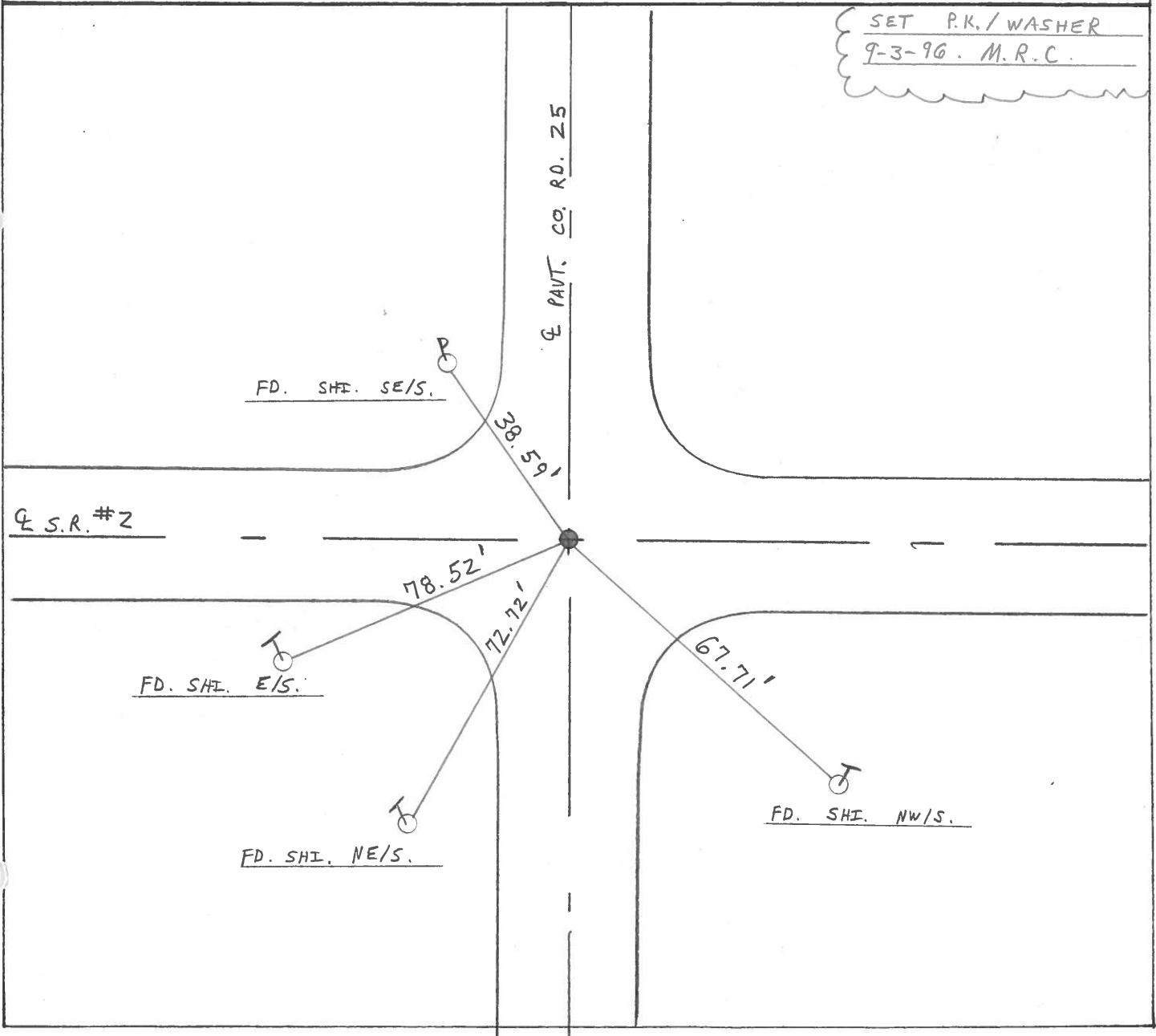
LEFT - ~~Q~~ PAV'T. - RIGHT Q OF BOTH

TO EDGE PAVEMENT

S.L.M. 105 + 88



SET P.K. / WASHER
9-3-96. M.R.C.



County FULTON S.R. 2

Date 7-3-84

Township GERMAN

Weather CLEAR

Section 31

Temp. +82

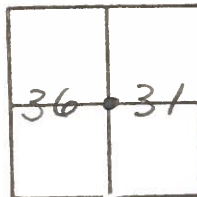
T2N, R4E

Personnel LOEHRKE

HOUSE HOLDER

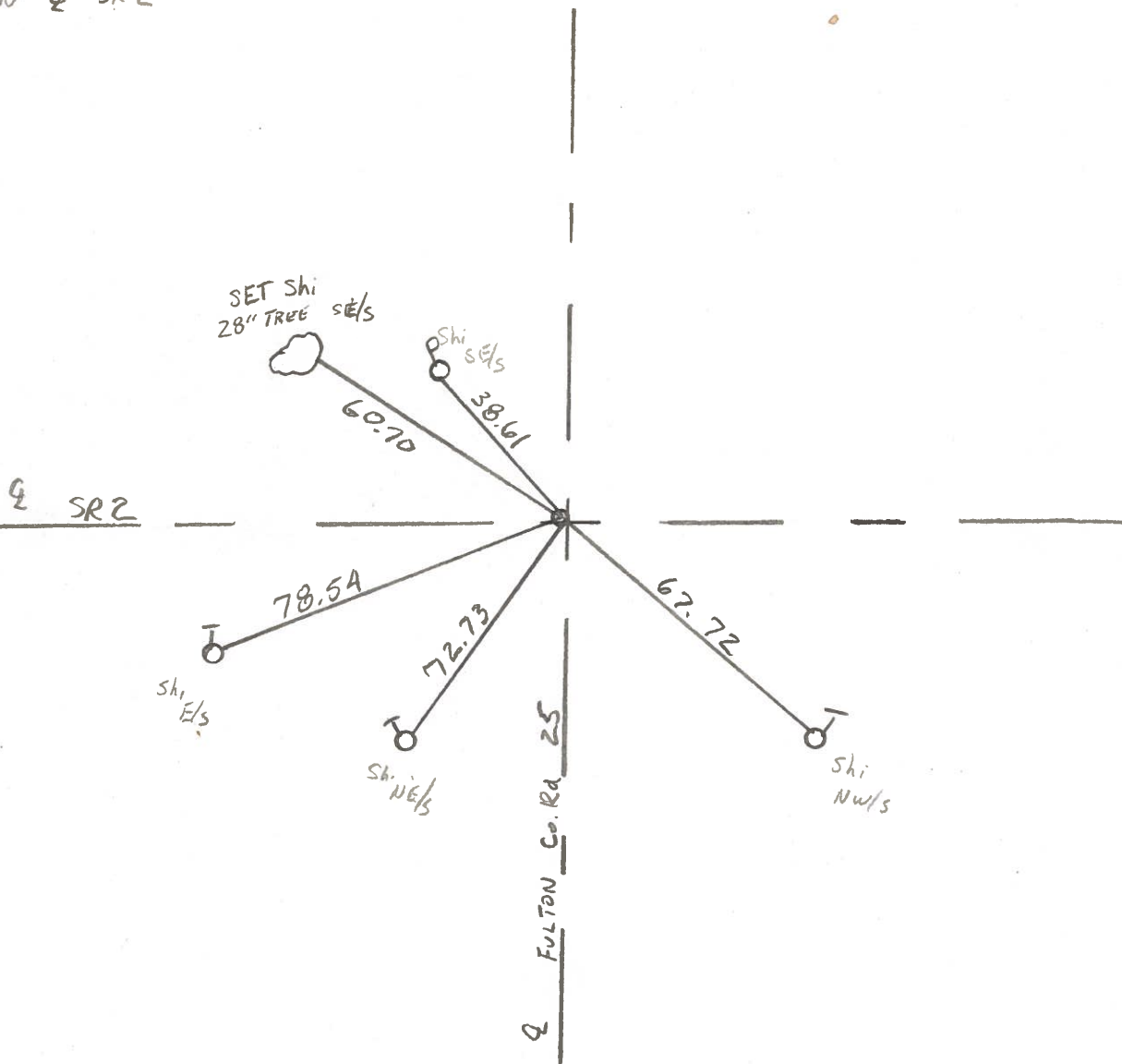
BARNEY

5



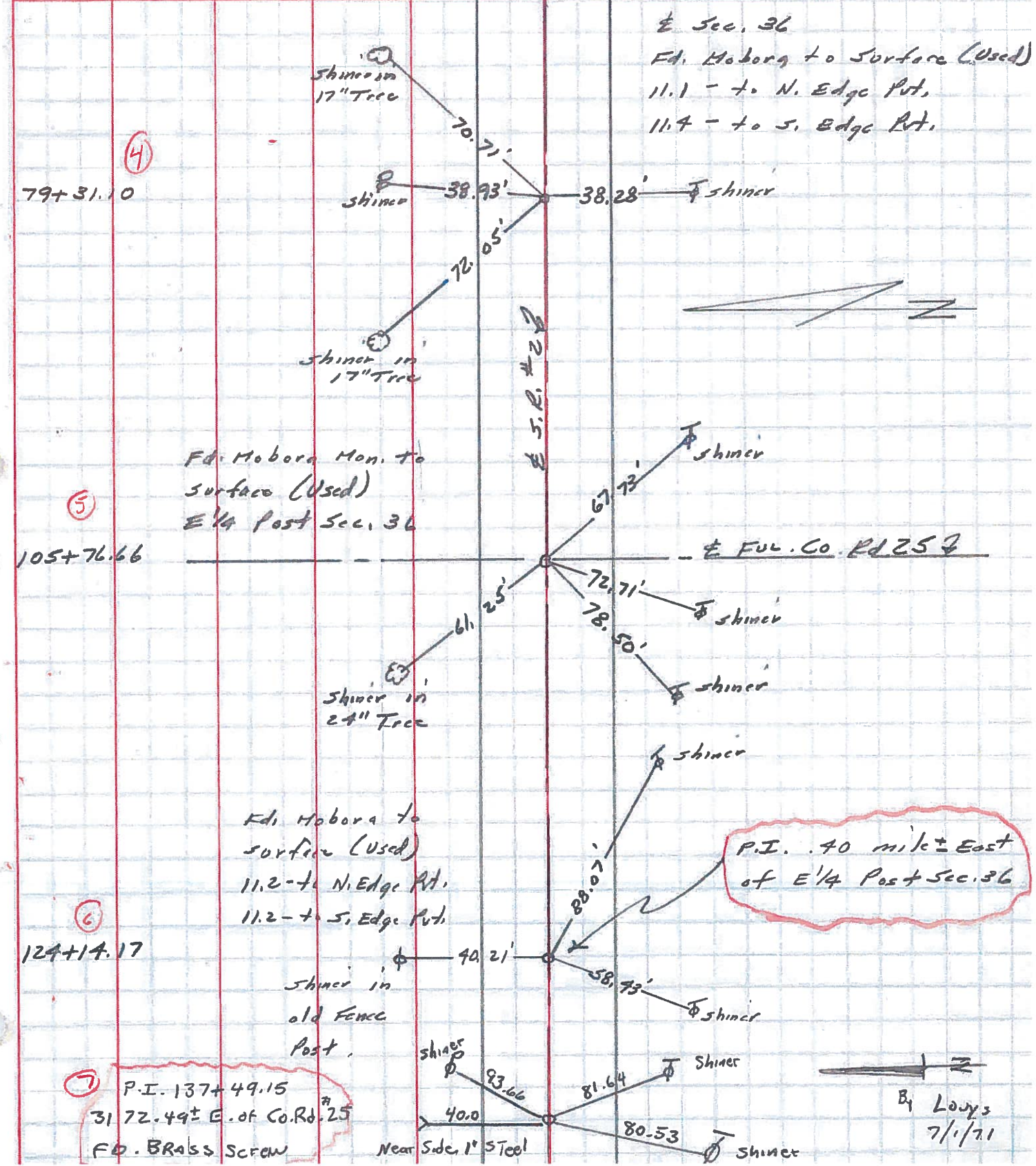
Fd: PK. Shank @ SURFACE
 1' W of & Co. Rd. 25
 ON & SR 2

SLM 105° + 76

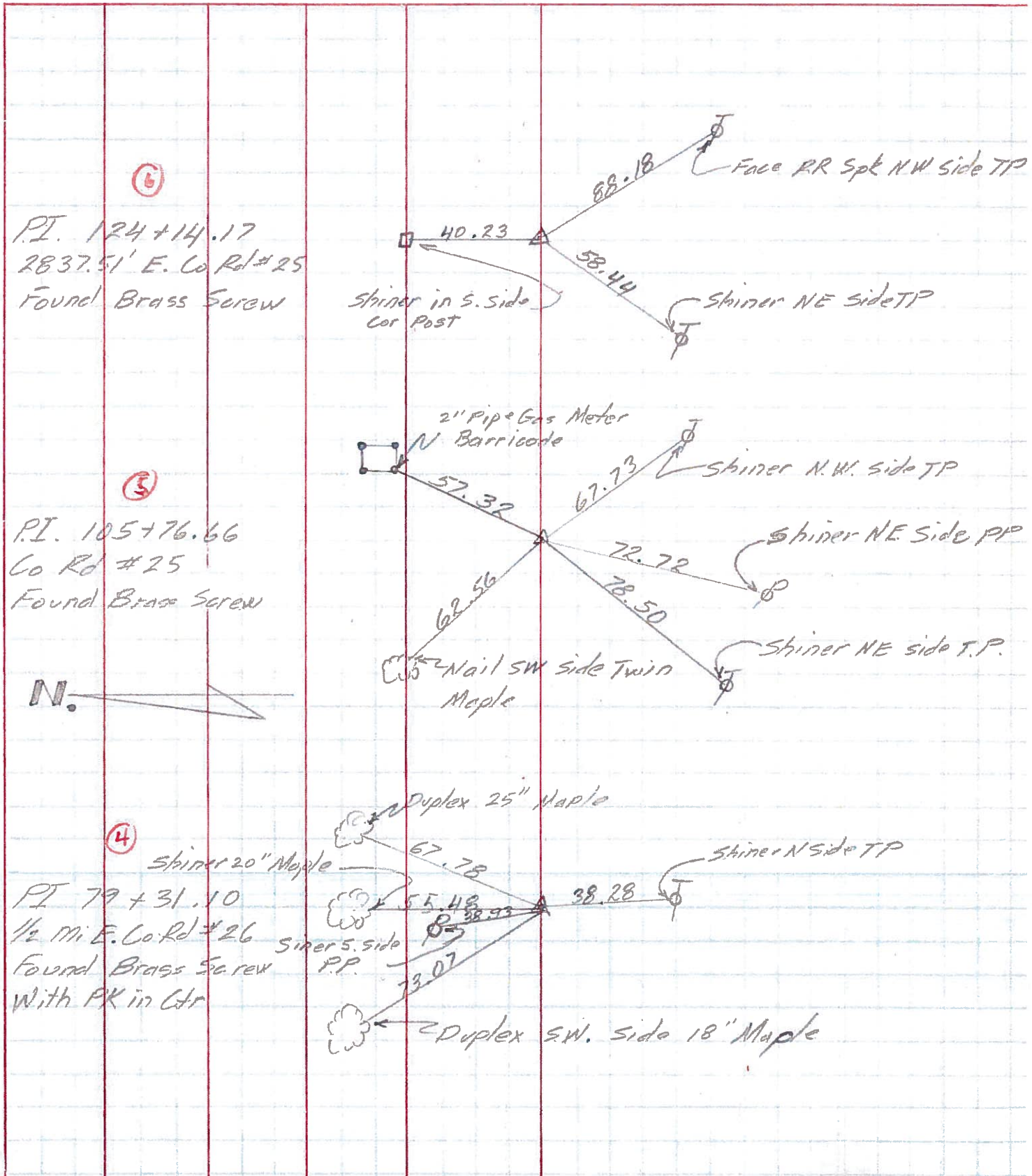


PERSONNEL	TITLE	PERSONNEL	TITLE	COUNTY	DATE
Stane	Notes			Fulton	13 June 72
Michaelak	P.C.			S. R. #2	WEATHER Humid
Denno	H.C.			SEC. Co. Line to Archbold	TEMP. 78°

DESCRIPTION References to Control Points LEFT CENTER LINE RIGHT JOB NO.



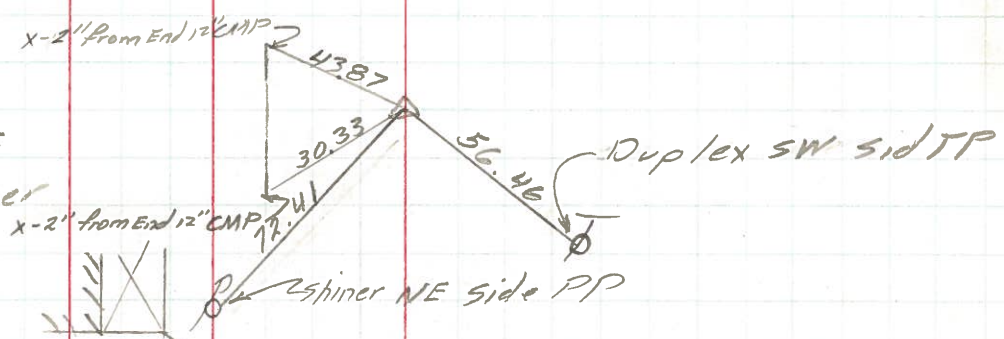
PERSONNEL	TITLE	PERSONNEL	TITLE	COUNTY	DATE	WEATHER	TEMP.
Louis Erikson				F.V.	7/1/71	Fair	80°
Rau				S. R. # 2			
Badschop				SEC. W. E. Co line to int 2 E 66			
DESCRIPTION Rewit pass to Control points				LEFT	CENTER LINE	RIGHT	JOB NO.



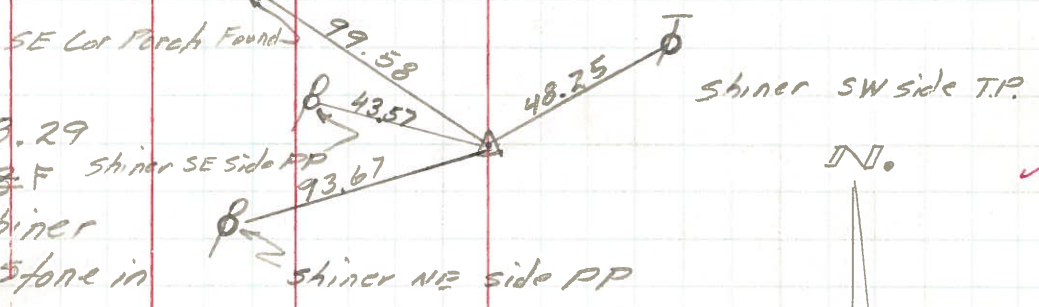
PERSONNEL TITLE PERSONNEL TITLE COUNTY Fu DATE 6/15/71
 Eriksen Recorder S. R. # 2 & 66 WEATHER Cloudy
 Shaw SEC. Prehbold to 201A TEMP. 75°
 DESCRIPTION Re Witness to Control Points JOB NO.

Ref Const Plan Dated 1948

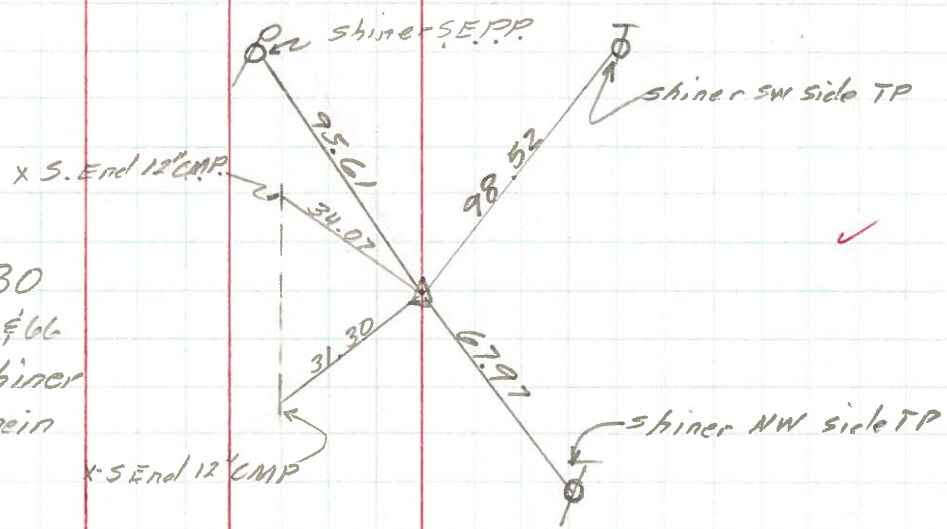
PI 132+19.8
 1/2 mi N. Co Rd # 3 F
 Found PK Nail Shiner
 F.R.E.



PI 105+78.29
 Co Rd # 3 F
 Found PK 1/2 Shiner
 Aledq. Over Stone in
 Mon Box
 F.R.E.



PI 79+32.30
 1/2 Not Int. SR 2 & 66
 Found PK Nail Shiner
 Aledq. Over Stone in
 Mon Box
 F.R.E.



PERSONNEL TITLE PERSONNEL TITLE

COUNTY Fulton

DATE OK-1-22-58

12-12-58

S. R. #2

WEATHER OK. 11-26-61

Louys 7-17-63

SEC.

TEMP.

DESCRIPTION

JOB NO.

LEFT

CENTER LINE

RIGHT

2" Pipe
Gas Meter
Barricade



57.35'

67.77' Shiner



Sta. 105+76.66
Brass screw

#135
5

BRASS
screw

49.45'

88.84'

Shiner 9" cherry
Nail N.E. Side

54.55'

78.56'

Shiner
P. Pole

Sta. 124+14.17
Brass screw

#136
6

40.30'

Shiner in Cor. post

89.09' Shiner

58.47'

Shiner

Sta. 137+49.15
Brass screw

#137
7

45.88'

3" steel sign post

18.67'

Shiner

82.26'

Shiner

Sta. 150+84.18
Brass screw

#138
8

42.48'

Shiner

98.73'

Shiner

71.46'

Shiner