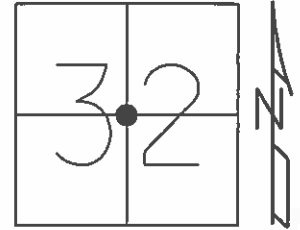


**O.D.O.T. DISTRICT 2 SURVEY OFFICE (USE ONLY)**

PERSONNEL \_\_\_\_\_ REFERENCE NO. 9 A SHEET 10 OF 15  
 NOTES HOMAN DATE 5/31/12 ROUTE SR 2  
 H.C. ROUSOS WEATHER CLOUDY COUNTY FULTON  
 R.C. HOMAN TEMP. 65° TOWNSHIP GERMAN  
 \_\_\_\_\_ SECTION 32  
 \_\_\_\_\_ T 7 N R 5 E

TYPE MONUMENT P.K./WASHER  
 ON SURFACE - ~~BELOW~~ ON \_\_\_\_\_  
~~LEFT~~ - ☉ PAV'T - ~~RIGHT~~ ON \_\_\_\_\_  
14.1' TO LT FACE OF CURB  
 S.L.M. 177+57  
 GRID: NORTHING: 680962.363 EASTING: 1471256.819



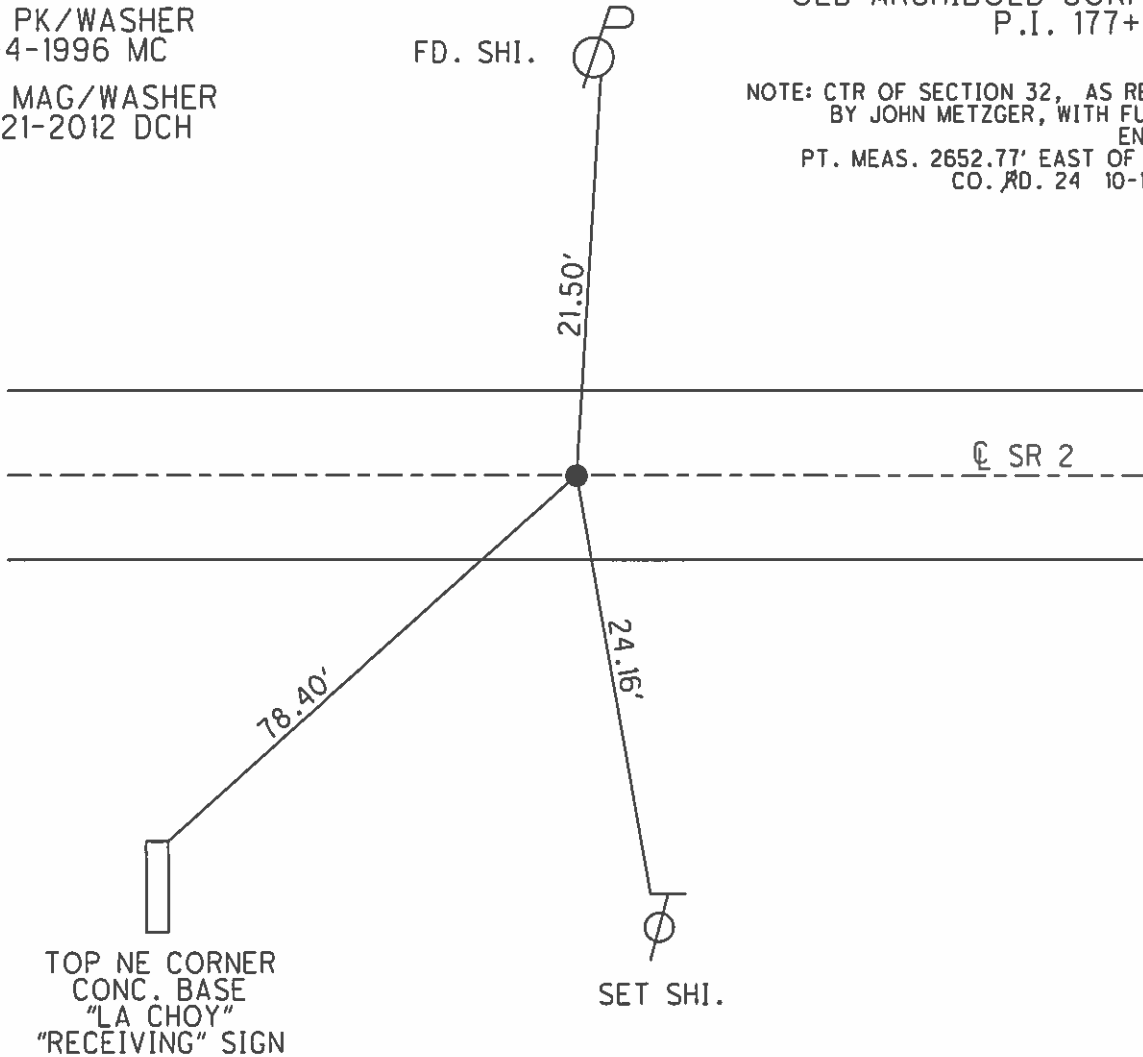
RECORD

SET PK/WASHER  
 9-4-1996 MC  
 SET MAG/WASHER  
 8-21-2012 DCH

RECORD:

OLD ARCHIBOLD CORP LINE  
 P.I. 177+56.49

NOTE: CTR OF SECTION 32, AS RESEARCHED  
 BY JOHN METZGER, WITH FULTON CO.  
 ENG. OFFICE  
 PT. MEAS. 2652.77' EAST OF CORNER ☉  
 CO. RD. 24 10-18-96 C.L.

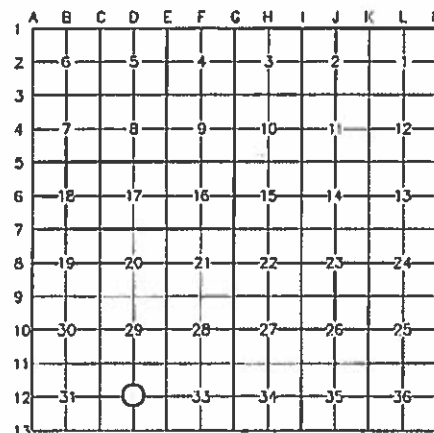


# FULTON COUNTY LAND CORNER REFERENCE SHEET

## OFFICE OF THE FULTON COUNTY ENGINEER

### Quick Reference Sheet

Section: 32  
 Town: 9 South  
 Range: 2 East  
 Corner Code#: D-12  
 Permanent Point # 139



I, Joseph D. Fenicle, PS, in a field survey on May 25, 2010 do hereby state that the survey monument mentioned has been located and identified. The old witnesses, if available, were checked and if necessary a new monument was brought to the surface. New witnesses have been set where necessary using a 1 1/2 " brass tag stamped "Fulton County", unless indicated otherwise. All information has been researched to the best of my knowledge.

**A. Description of original monument and accessories and/or subsequent restoration:**

???? O. Griffin, Office of the Fulton County Engineer. Stone

- 1967 ???? , Ohio State Highway Department. Brass Screw
- [1] NE 72.33' Southwest Corner of Store Building
  - [2] SE 84.91' Trio Bar Tavern
  - [3] SW 37.08' Shiner in 14" Box Elder
  - [4] SW 35.90' Shiner in 18" Box Elder
  - [5] NW 61.93' Shiner in 22" Maple
  - [6] NW 32.45' Shiner in 22" Maple

- 1974 ???? , Ohio Department of Transportation. PK Nail over Brass Screw
- [7] N 14.40' Drill Hole Set
  - [8] NE 20.55' Drill hole Set
  - [1] NE 72.30' Rupp Building
  - [2] SE 84.88' Corner of House
  - [9] NW 20.88' Drill Hole Set

- 1995 C. Loehrke, Ohio Department of Transportation. PK Nail/Washer
- [10] NE 21.50' Found Shiner in Power Pole
  - [11] SE 24.16' Set Shiner in North Side of Telephone Pole
  - [12] SW 78.40' Top of Northeast Corner, Concrete Base "LA Choy" Receiving Sign
  - [5] NW 61.63' Found Shiner in 38" Maple

- 2010 J. Fenicle, PS, Office of the Fulton County Engineer. PK Nail/Washer
- [7] N 14.43' Found Chiseled "x"
  - [1] NE 72.32' Southwest Foundation Corner of Dr. John Erch Eye Doctor Building (700 S.R. 2)
  - [10] NE 21.53' Found Nail/Shiner in South Face of Power Pole
  - [13] NE 26.46' Chiseled "x" on Northeast Rim of Sanitary Manhole
  - [11] SE 24.14' Found Nail/Shiner in North Face of Telephone Pole
  - [14] SW 90.74' Found Nail/Shiner in Northeast Face of Power Pole # 040AT12 9 12603
  - [15] NW 92.05' Set Fulton County Tag in Southeast Face of Power Pole
  - [9] NW 20.95' Found Chiseled "x"

**B. State Plane Coordinates (NAD1983[86]), Ohio North Zone (3401), U.S. Survey Feet.**

North 680963.247 East 1471255.841

**C. Notes** This corner is located on State Route 2 between Township Road 24 and State Route 66. MAG Nails have been set 2.00' North & West. C-12 to D-12 = 2652.77' as measured by C. Loehrke in 1996.

ORIGINAL DOCUMENT IS ON FILE WITH THE OFFICE OF THE FULTON COUNTY ENGINEER  
 9120 COUNTY ROAD 14, WAUSEON, OH 43067-9669  
 JOSEPH D. FENICLE, PS

# O.D.O.T. DISTRICT 2 SURVEY OFFICE

PERSONNEL

REFERENCE NO. 9-A

SHEET 10 OF 23

NOTES LOEHRKE

H.C. ROUSOS

R.C. CANTERBURY

DATE 8-8-95

WEATHER CLOUDY

TEMP. +78

ROUTE S.R.2

COUNTY FULTON

TOWNSHIP GERMAN

SECTION 32

T 7 N R 5 E

Reset

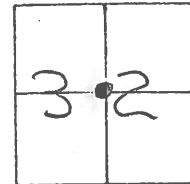
TYPE MONUMENT P.K / WASHER 9-4-96

ON SURFACE - ~~BELOW~~ Yes

~~LEFT - & PAV'T. - RIGHT~~ Yes

14.1 TO LT EDGE PAVEMENT FACE of Curb

S.L.M. 177+57

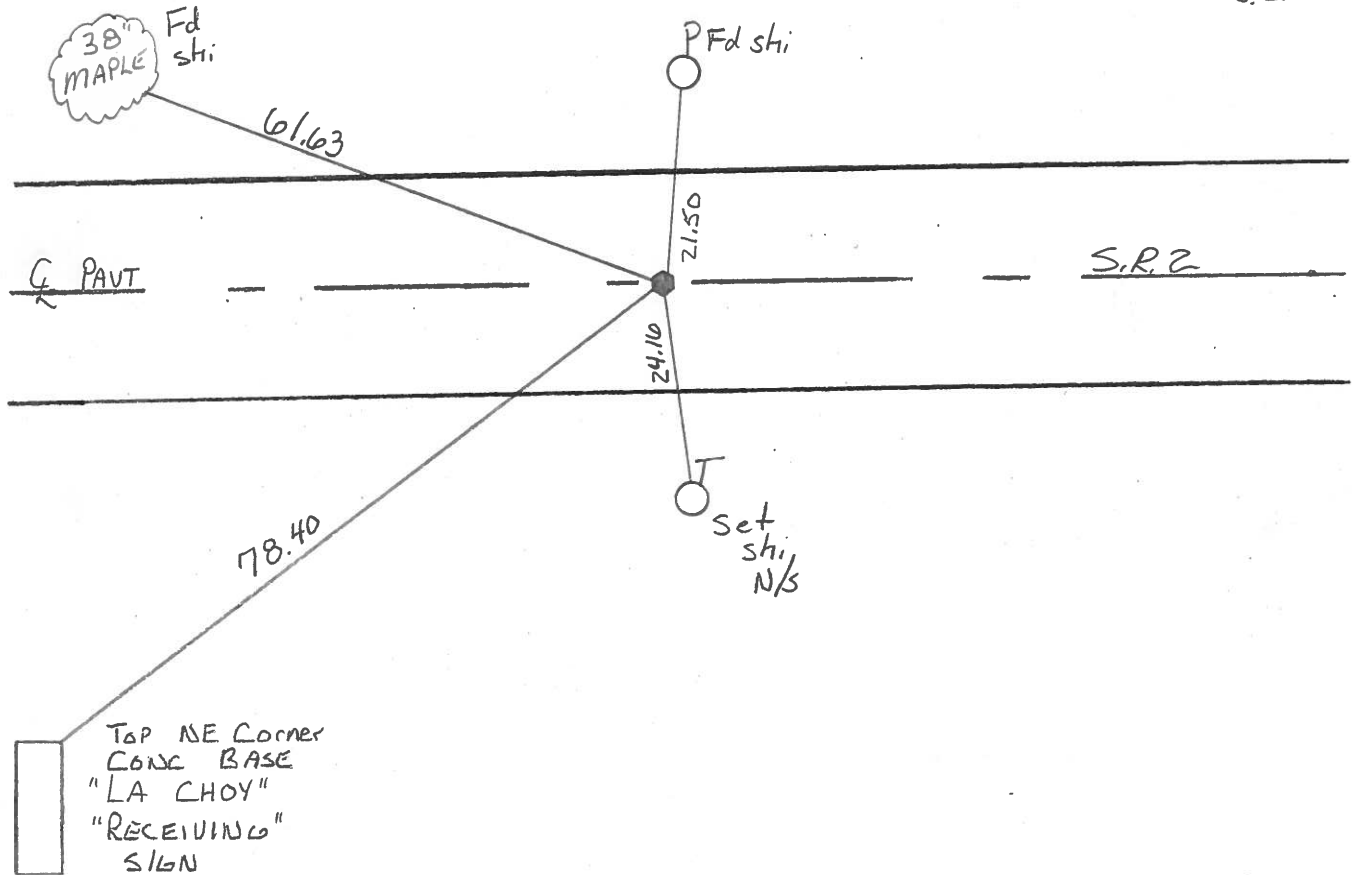


**Records:**

OLD ARCHBOLD CORP. LINE  
P.I. 177+56.49

NOTE: Ctr of Section 32, As Researched  
by John Metzger, with FULTON Co  
Eng. Office.

Pt Meas. 2652.77 ft East  
of 1/4 Corner @ Co.Rd 24.  
10-18-96  
C.L.



County FULTON S.R. 2

Township GERMAN

Section 32

TZN, RSE

Personnel Hoffman

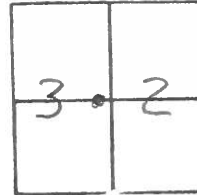
Householder

BARNHISEL

Date 7-5-84

Weather PT CLOUDY

Temp. + 70



9-A

Fd PK @ SURFACE

14.1 NEP

14.0 SEP

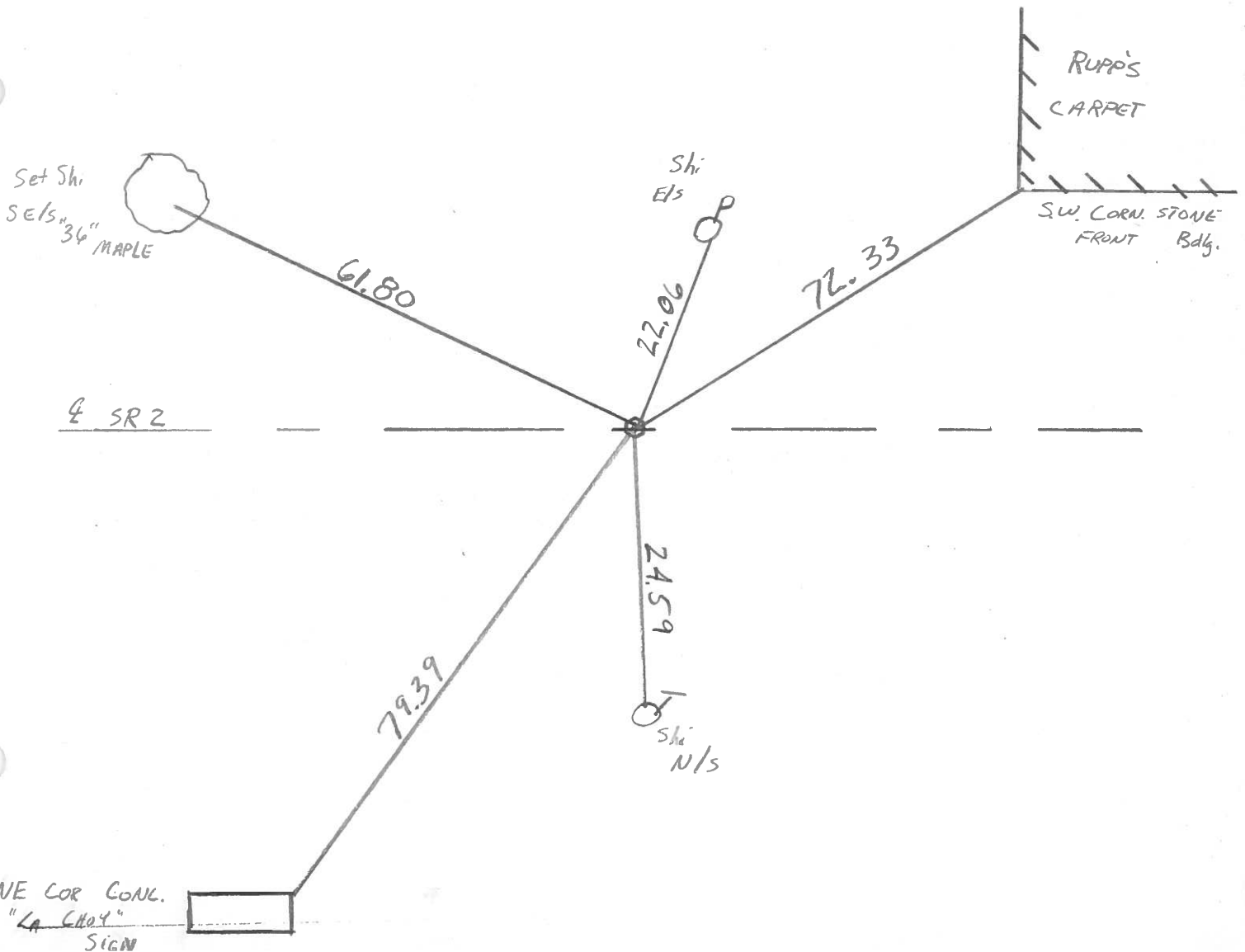
ON & PAINT SR2

PI 1774 56.49  
 OLD CORP. LINE  
 ARCH BOLD

SLM 175735

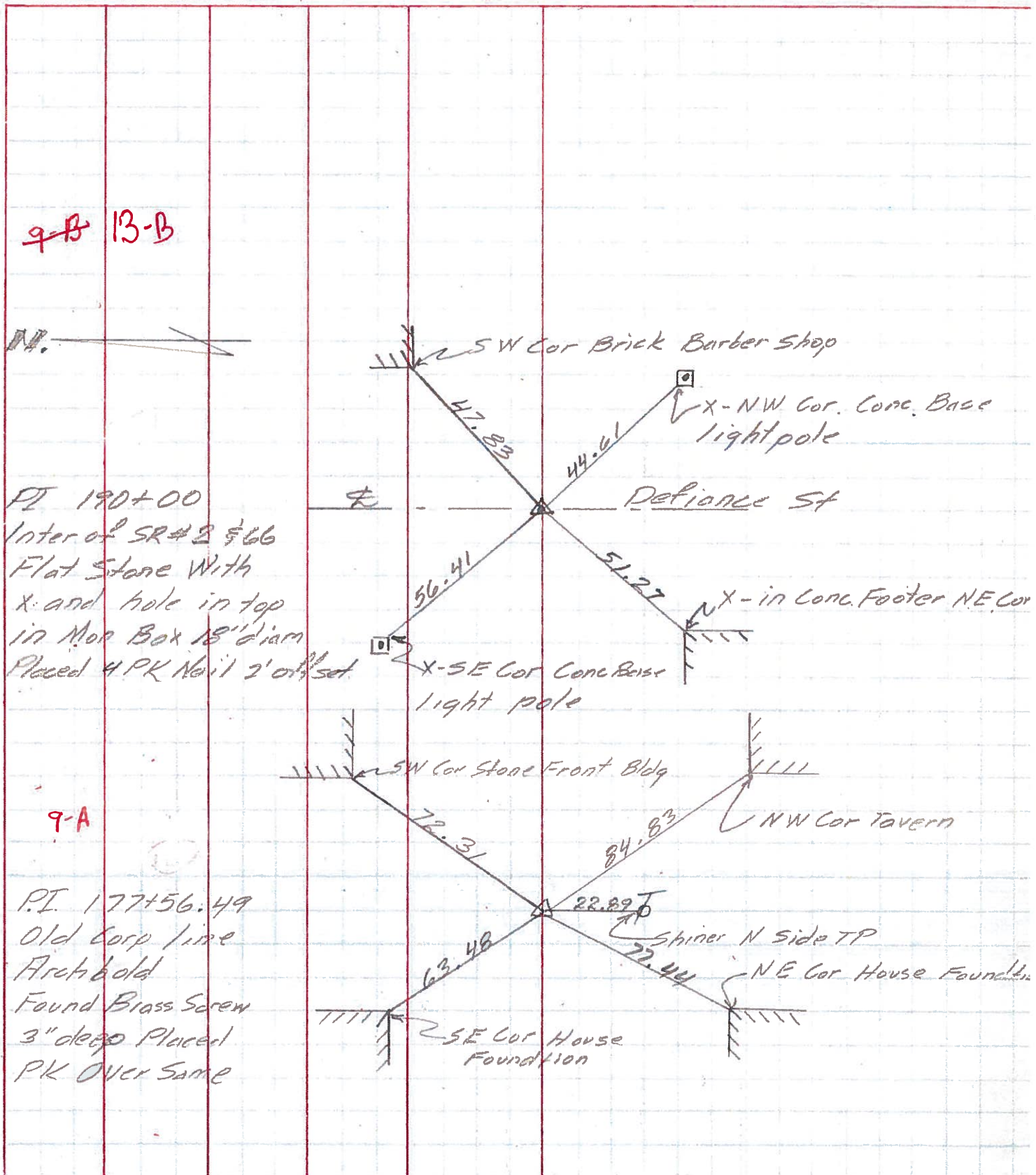
± 100' w/ot DEGROFF AVE

SET PK + WASHER  
10-5-84  
C.L.



PERSONNEL	TITLE	PERSONNEL	TITLE	COUNTY	DATE
<u>Lovys</u>		<u>Brindley</u>		<u>Fu</u>	<u>7/1/71</u>
<u>Eriksen</u>				S. R. # <u>2</u>	WEATHER <u>Fair</u>
<u>Fou</u>				SEC. <u>W &amp; E</u> Col. <u>in to Inter 2 &amp; 66</u>	TEMP. <u>80°</u>
<u>Badenhop</u>					

DESCRIPTION Re witness to Control Points JOB NO. \_\_\_\_\_





PERSONNEL TITLE PERSONNEL TITLE

COUNTY Fulton

DATE OK 1-22-58

S. R. # 2

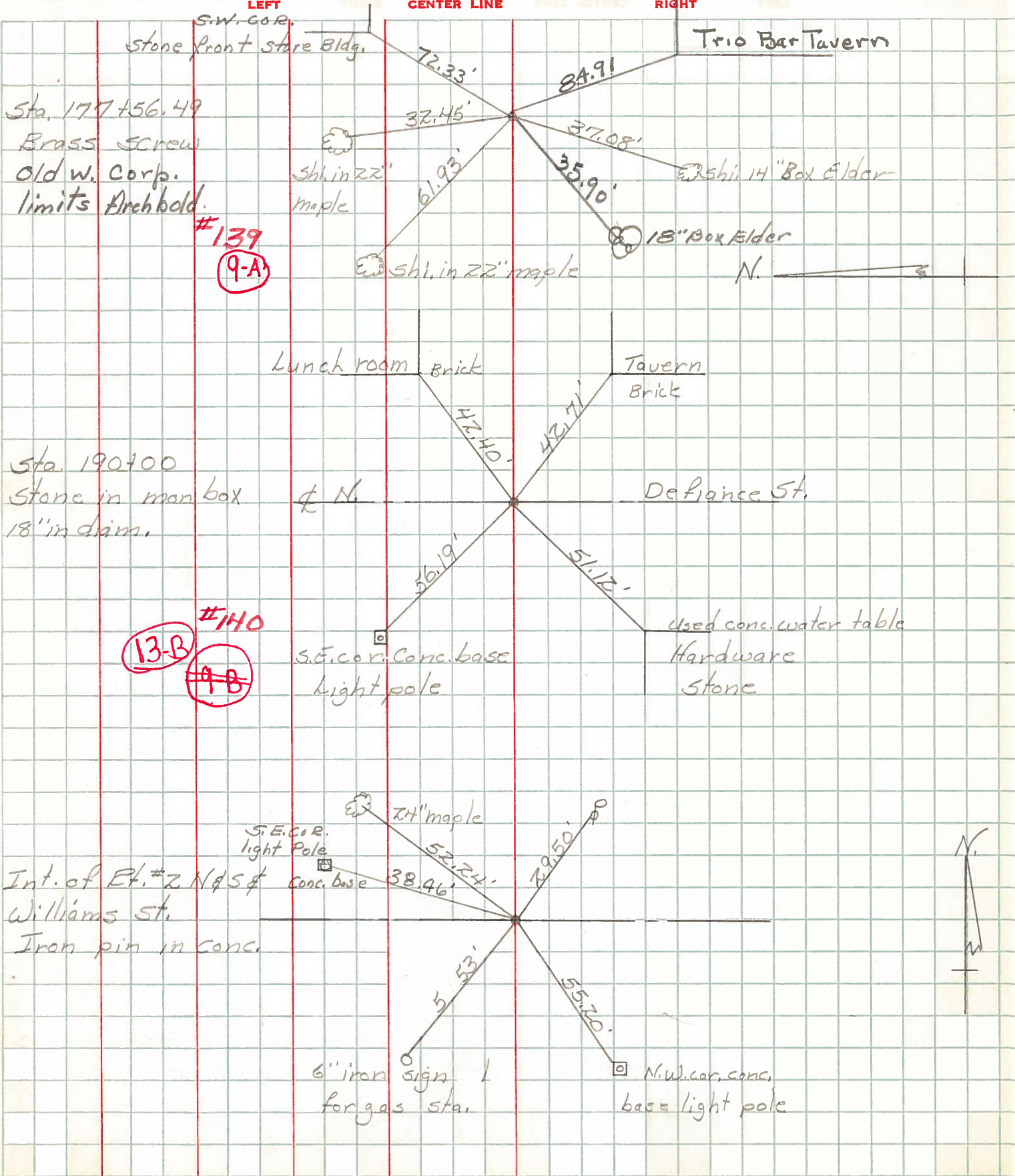
WEATHER 12-12-58  
W. Knipe OK 10-26-61

SEC.

TEMP.

DESCRIPTION Archbold Ohio

JOB NO.



#139  
9-A

#140  
13-B  
~~9-B~~





PERSONNEL	TITLE	PERSONNEL	TITLE	COUNTY	DATE	WEATHER	TEMP.
Knape				Fulton	11-1-60	Cloudy	50°
Armbruster				S. R. 2			
Gunfer				SEC.			
Mohler							

DESCRIPTION Archbold, West Village Limits - Stryker St. JOB NO. 11-1-61 R. King

