

O.D.O.T. DISTRICT 2 SURVEY OFFICE (USE ONLY)

PERSONNEL \_\_\_\_\_ REFERENCE NO. 10 SHEET 11 OF 15

NOTES \_\_\_\_\_ DATE 5/31/12 ROUTE SR 2  
 H.C. ROUSOS WEATHER CLOUDY COUNTY FULTON  
 R.C. HOMAN TEMP. 65° TOWNSHIP GERMAN  
 \_\_\_\_\_ SECTION 32  
 \_\_\_\_\_ T 7 N R 5 E

TYPE MONUMENT P.K./WASHER

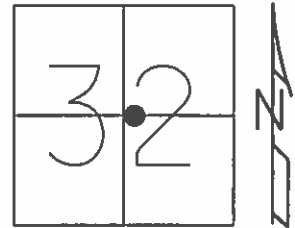
ON SURFACE - ~~BELOW~~ ON

~~LEFT~~ CL ~~PAVT~~ - RIGHT 1.0'

13.2' TO RT FACE OF CURB

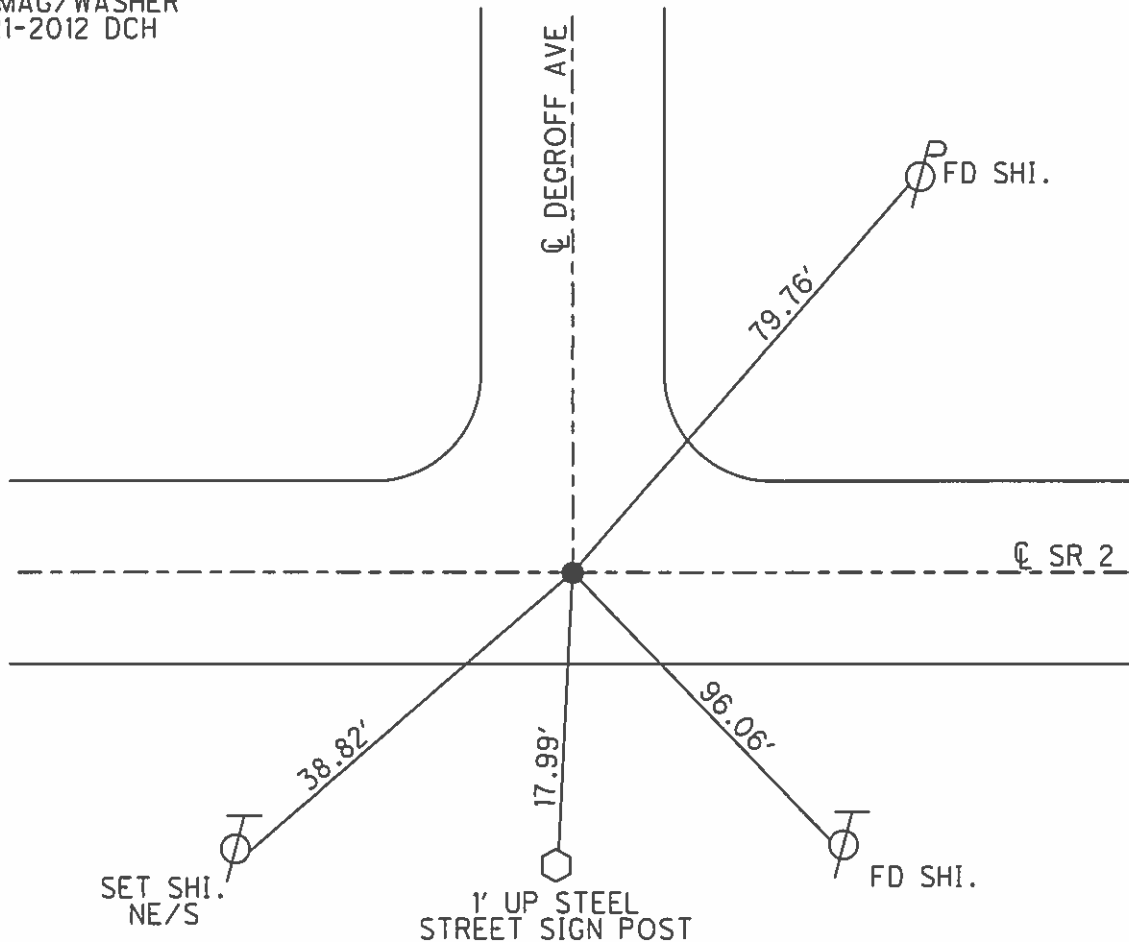
S.L.M. 178+59

GRID: NORTHING: 680959.574 EASTING: 1471358.103



RECORD

SET PK/WASHER  
 9-4-1996 MC  
 SET MAG/WASHER  
 8-21-2012 DCH



# O.D.O.T. DISTRICT 2 SURVEY OFFICE

PERSONNEL \_\_\_\_\_

REFERENCE NO. 10

SHEET 11 OF 23

NOTES LOEHRKE

H.C. ROUSAS

R.C. CANTERBURY

DATE 8-8-95

WEATHER CLOUDY

TEMP. +78

ROUTE S.R. 2

COUNTY FULTON

TOWNSHIP GERMAN

SECTION 32

T 7 N R 5 E

Reset

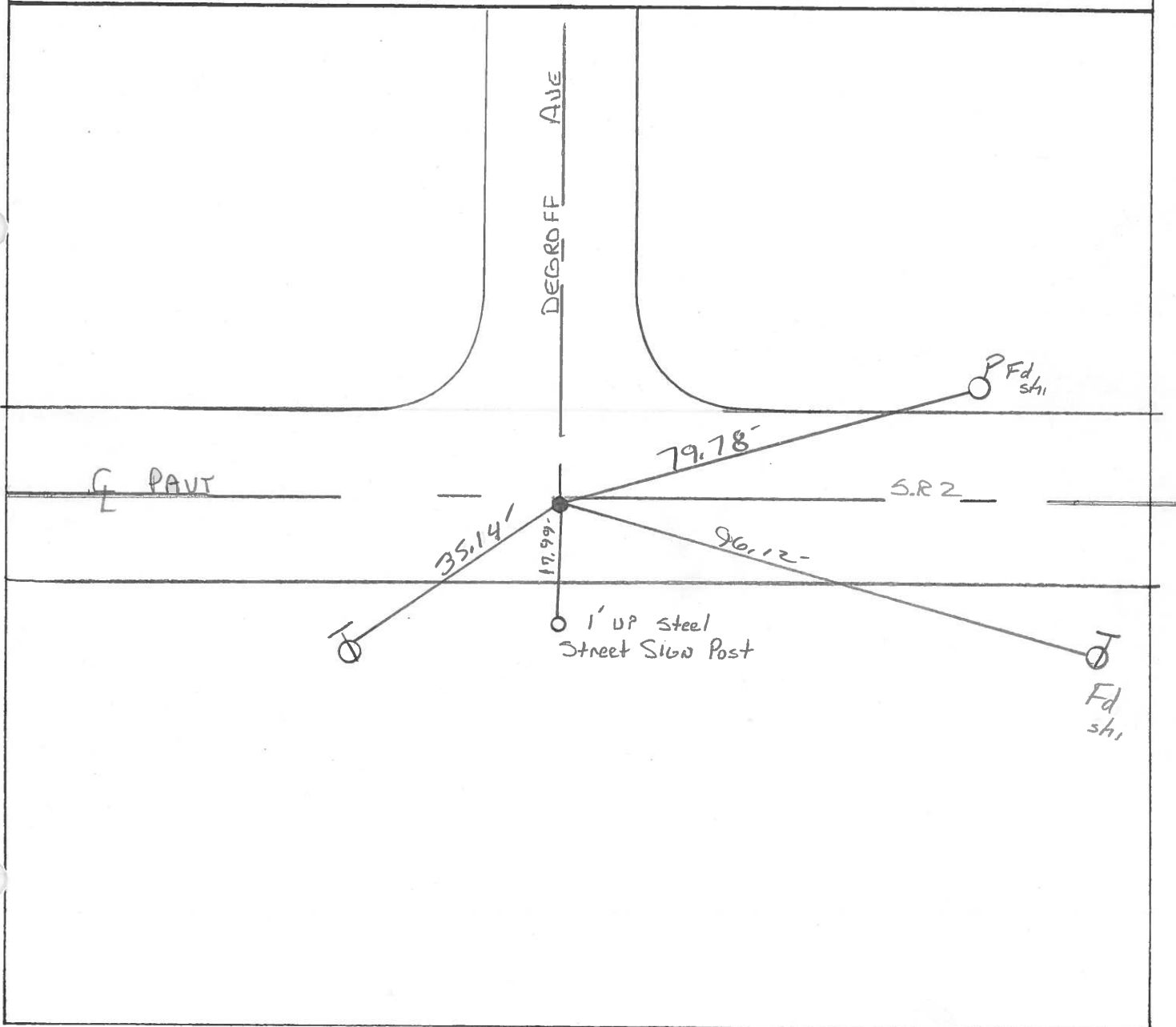
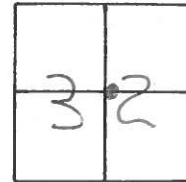
TYPE MONUMENT P.K. / WASHER 9-4-94

ON SURFACE - ~~BELOW~~ Yes

~~LEFT - & PAVT.~~ - RIGHT 1.0' RI

13.2 TO RT EDGE PAVEMENT FACE of Curb

S.L.M. 178+59



County FULTON S.R. 2

Date 7-3-84

Township GERMAN

Weather CLEAR

Section 32

Temp. +85

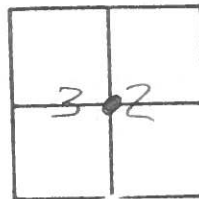
T2N, R5E

Personnel LOEHRKE TD

HOUSE HOLDER RC

BARNEY HC

# 10



Fd: PK. NAIL 1" Below SURFACE

SLM 178+37

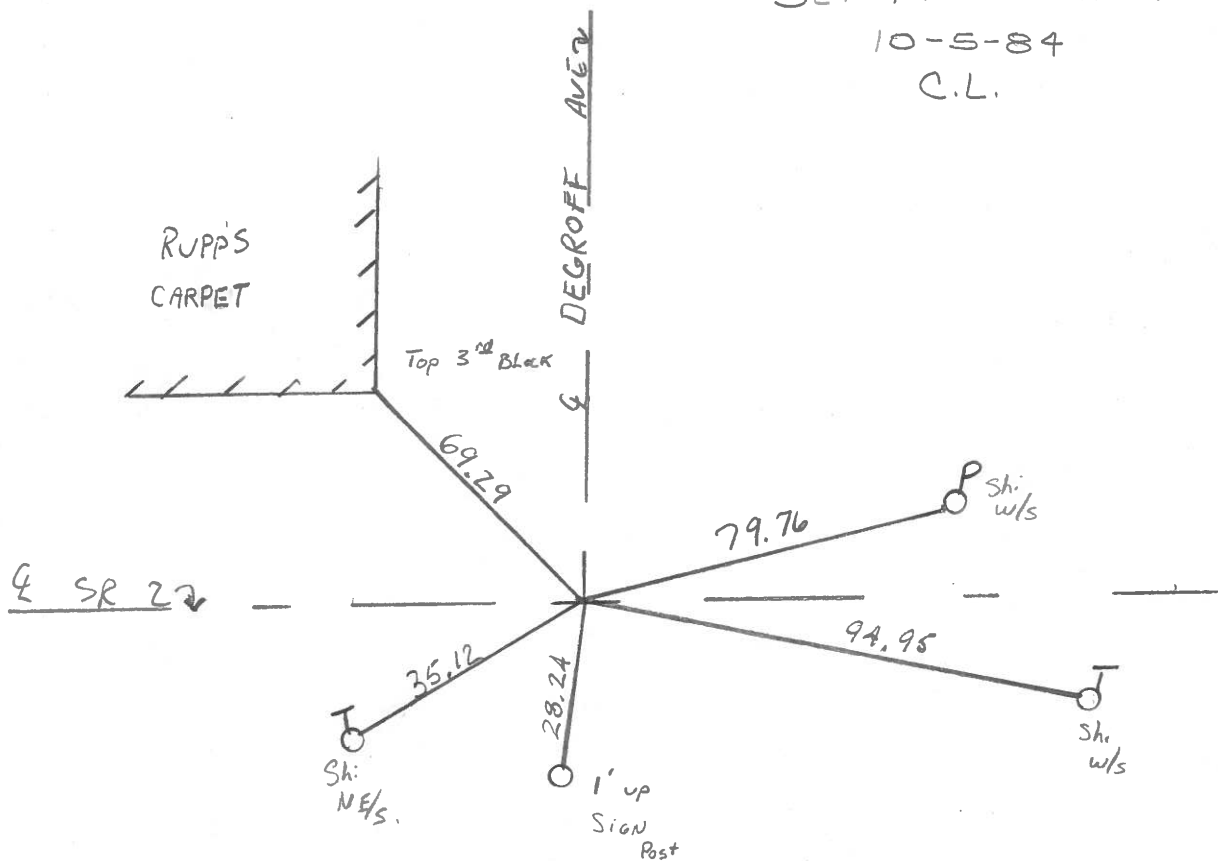
ON & SR2

ON & DEGROFF Ave

SET PK + WASHER

10-5-84

C.L.



PERSONNEL	TITLE	PERSONNEL	TITLE
Stone	Notes		
Michalak	H.C.		
Deno	R.C.		
Cortis	R		

COUNTY Fulton DATE 14 June 72  
 S. R. #2 WEATHER Humid  
 SEC. Co. Line East to Archbold TEMP. 79°

DESCRIPTION References to Control Points JOB NO. \_\_\_\_\_  
 LEFT CENTER LINE RIGHT

