

O.D.O.T. DISTRICT 2 SURVEY OFFICE (USE ONLY)

PERSONNEL

REFERENCE NO. 11

SHEET 12 OF 15

NOTES HOMAN

DATE 5/31/12

ROUTE SR 2

H.C. ROUSOS

WEATHER CLOUDY

COUNTY FULTON

R.C. HOMAN

TEMP. 65°

TOWNSHIP GERMAN

SECTION 32

T 7 N R 5 E

TYPE MONUMENT P.K./WASHER

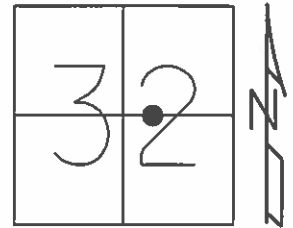
ON SURFACE - ~~BELOW~~ ON

~~LEFT~~ - Q PAV'T - ~~RIGHT~~ ON

14.0' TO RT FACE OF CURB

S.L.M. 181+03

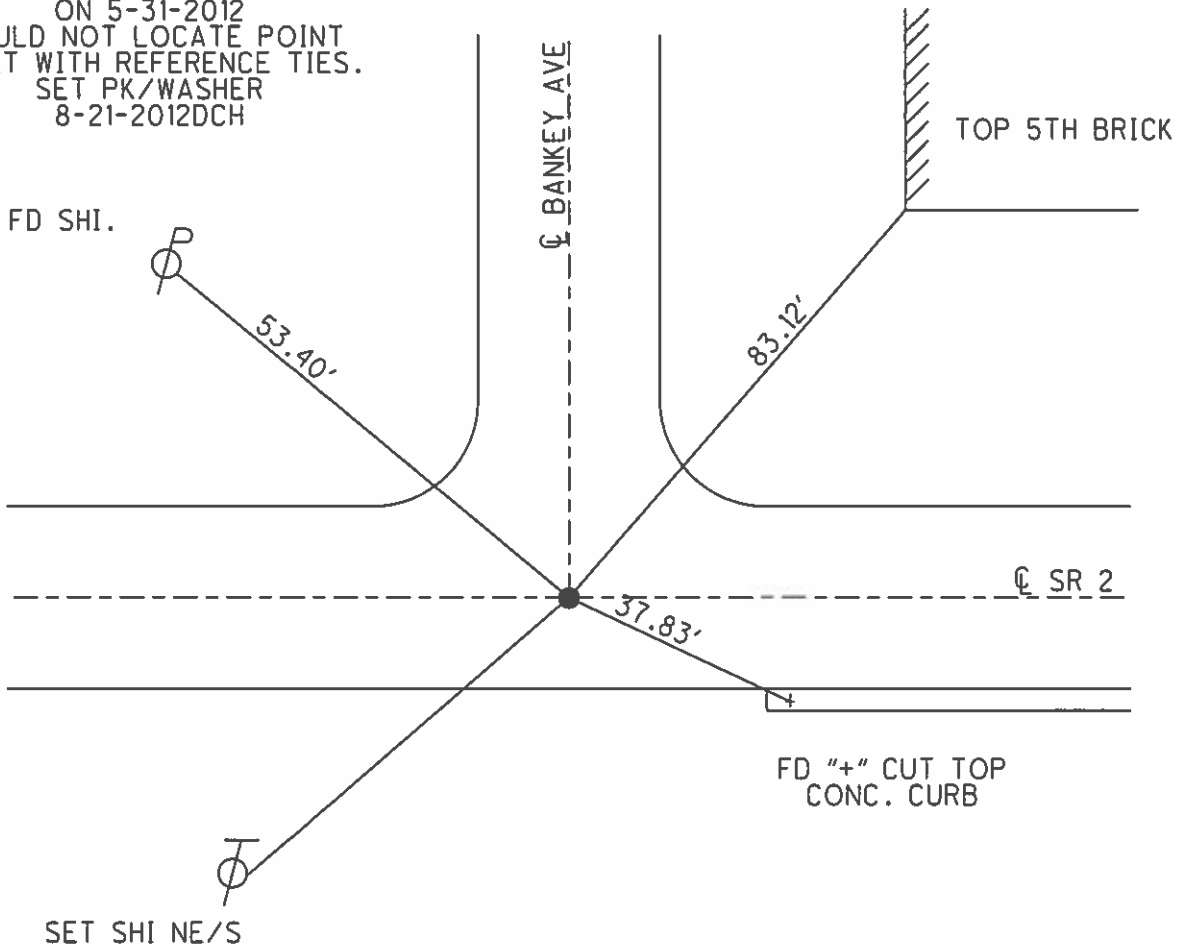
GRID: NORTHING: 680956.091 EASTING: 1471602.897



RECORD

SET PK/WASHER  
9-4-1996

ON 5-31-2012  
COULD NOT LOCATE POINT  
RESET WITH REFERENCE TIES.  
SET PK/WASHER  
8-21-2012DCH



# O.D.O.T. DISTRICT 2 SURVEY OFFICE

PERSONNEL \_\_\_\_\_

REFERENCE NO. 11

SHEET 12 OF 23

NOTES LOEHRKE

H.C. RAVENS

R.C. CANTERBURY

DATE 8-9-95

WEATHER CLOUDY

TEMP. +75

ROUTE S.R. 2

COUNTY FULTON

TOWNSHIP GERMAN

SECTION 32

T 7 N R 5 E

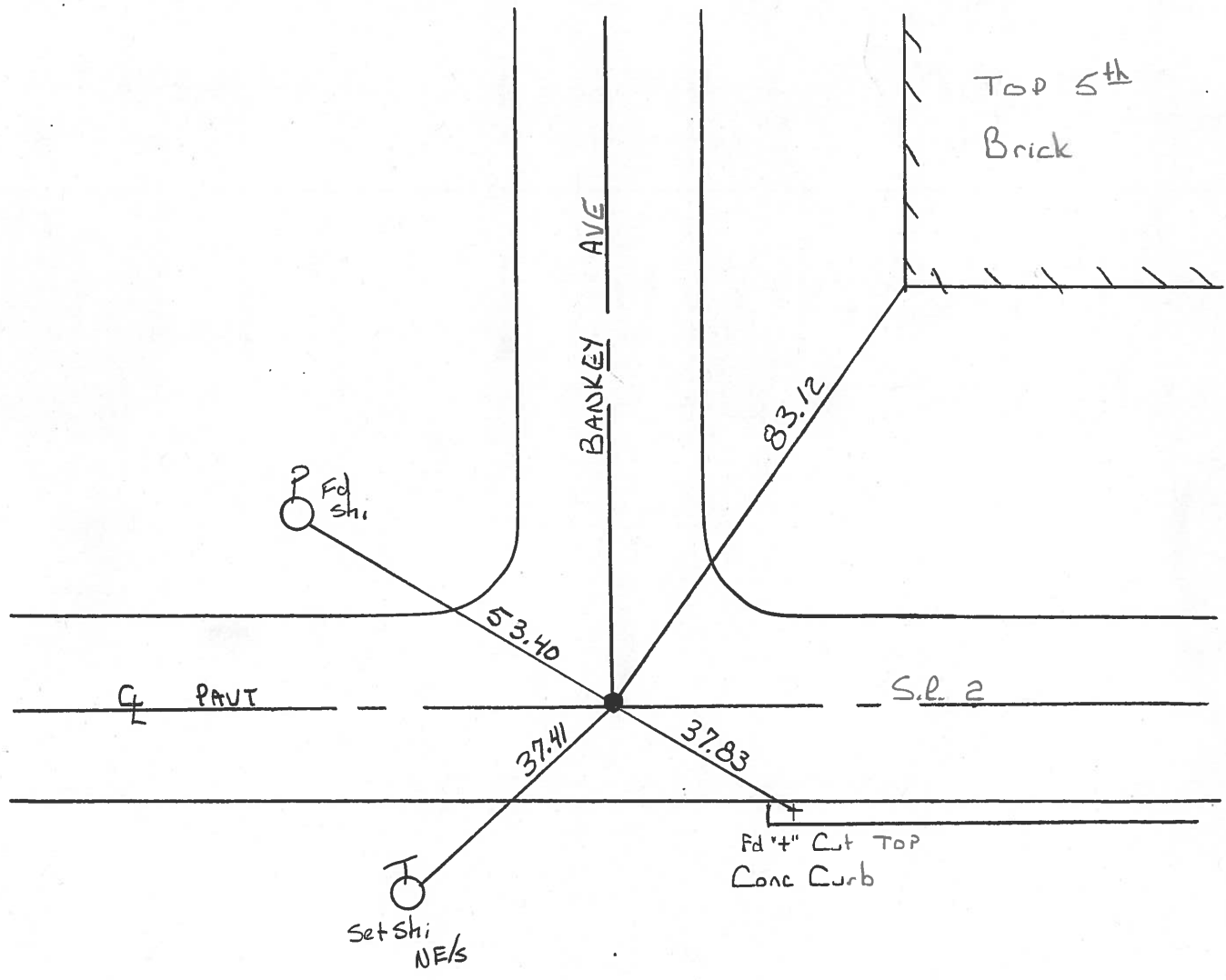
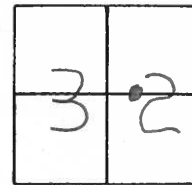
TYPE MONUMENT P.K. & WASHER <sup>Reset</sup> 9-4-96

ON SURFACE - ~~BELOW~~ Yes

LEFT - & PAV'T. - ~~RIGHT~~ Both

4" TO RT EDGE PAVEMENT Face of Curb

S.L.M. 181+03



PERSONNEL	TITLE	PERSONNEL	TITLE	COUNTY	DATE
Stone	Notes			Fulton	14 June 72
Michalak	H.C.			S. R. #2	WEATHER Humid
Jenne	R.C.			SEC. Arch bald	TEMP. 80°
Curtis	Flag				

DESCRIPTION References to Control Points JOB NO. \_\_\_\_\_

