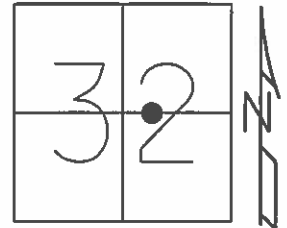


O.D.O.T. DISTRICT 2 SURVEY OFFICE (USE ONLY)

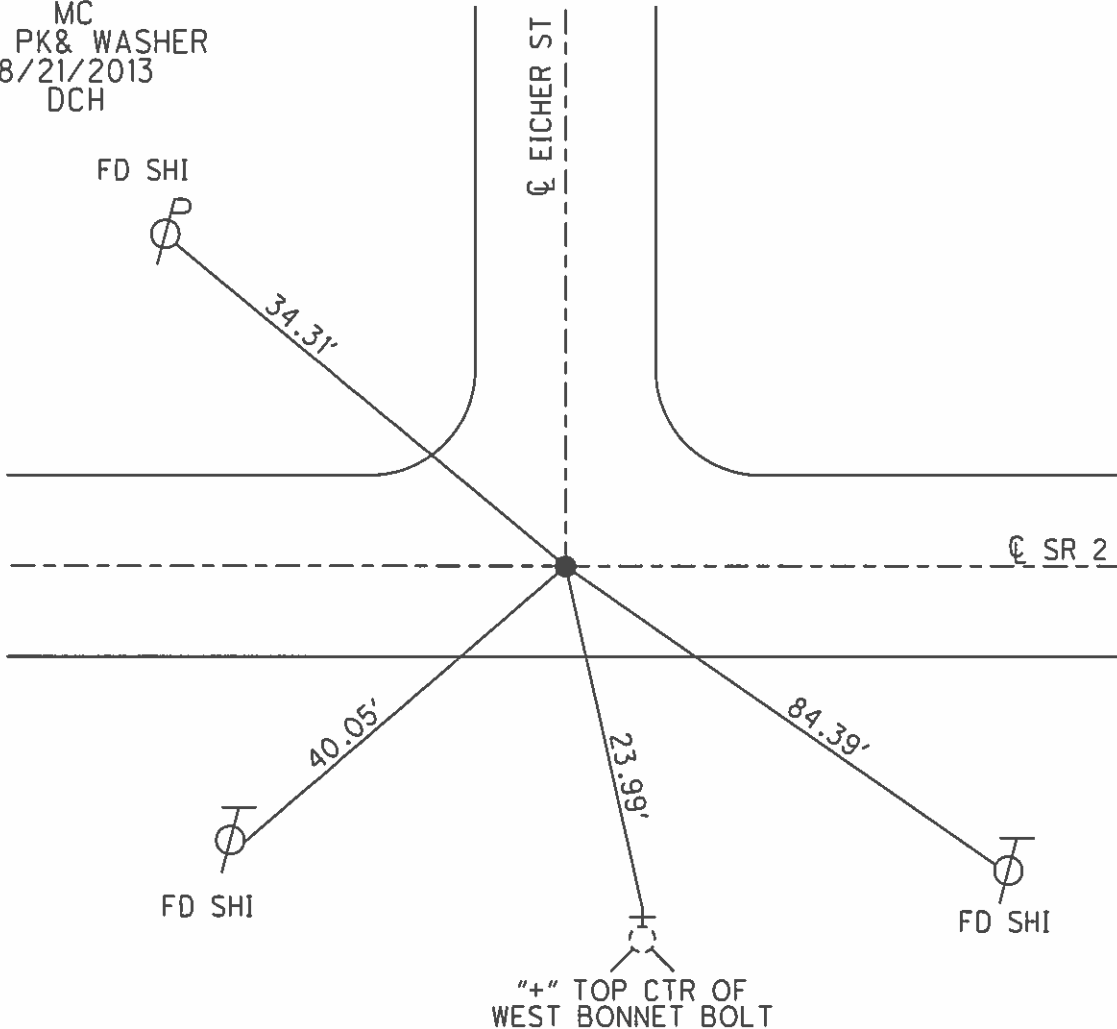
PERSONNEL _____ REFERENCE NO. 12 SHEET 13 OF 15
 NOTES HOMAN DATE 5/31/12 ROUTE SR 2
 H.C. ROUSOS WEATHER CLOUDY COUNTY FULTON
 R.C. HOMAN TEMP. 70° TOWNSHIP GERMAN
 SECTION 32
 T 7 N R 5 E

TYPE MONUMENT P.K. SHANK
 ON SURFACE - ~~BELOW~~ ON _____
~~LEFT~~ - \odot PAV'T - ~~RIGHT~~ ON _____
14.6' TO RT FACE OF CURB
 S.L.M. 187+22
 GRID: NORTHING: 680944.916 EASTING: 1472220.148



RECORD

RESET 9-4-96
 SET PK& WASHER
 9/4/2006
 MC
 SET PK& WASHER
 8/21/2013
 DCH



O.D.O.T. DISTRICT 2 SURVEY OFFICE

PERSONNEL

REFERENCE NO. 12

SHEET 13 OF 23

NOTES LOEHRKE

H.C. ROUSOS

R.C. CANTERBURY

DATE 8-9-95

WEATHER CLOUDY

TEMP. 75

ROUTE S.R.2

COUNTY FULTON

TOWNSHIP GERMAN

SECTION 32

T. 2 N. R. 5 E.

Set P.K. / WASHER

9-4-96

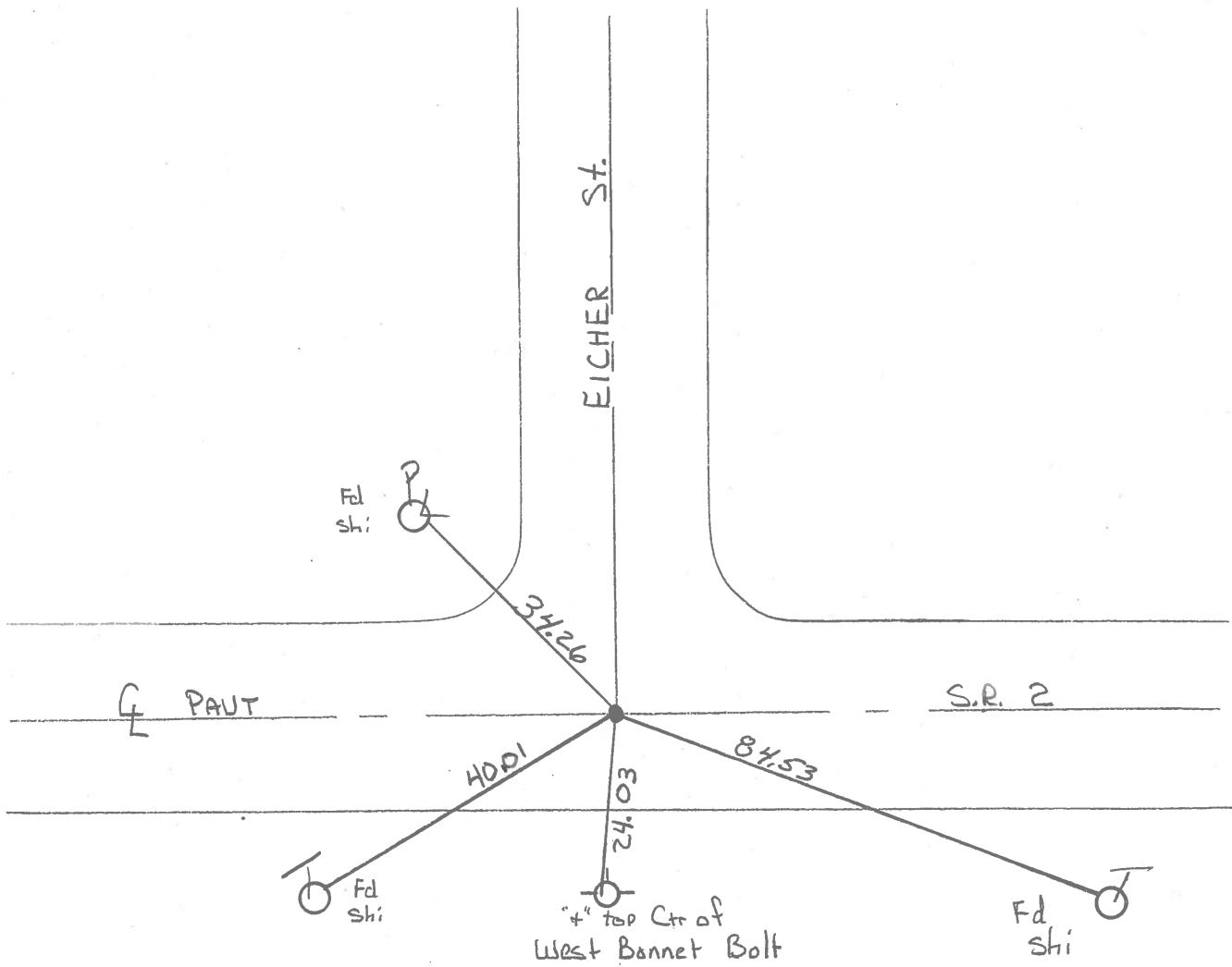
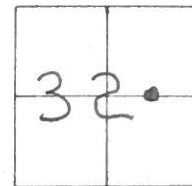
TYPE MONUMENT P.K. SHANK

ON SURFACE - BELOW Yes

~~LEFT~~ - & ~~PAV'T.~~ - ~~RIGHT~~ Yes

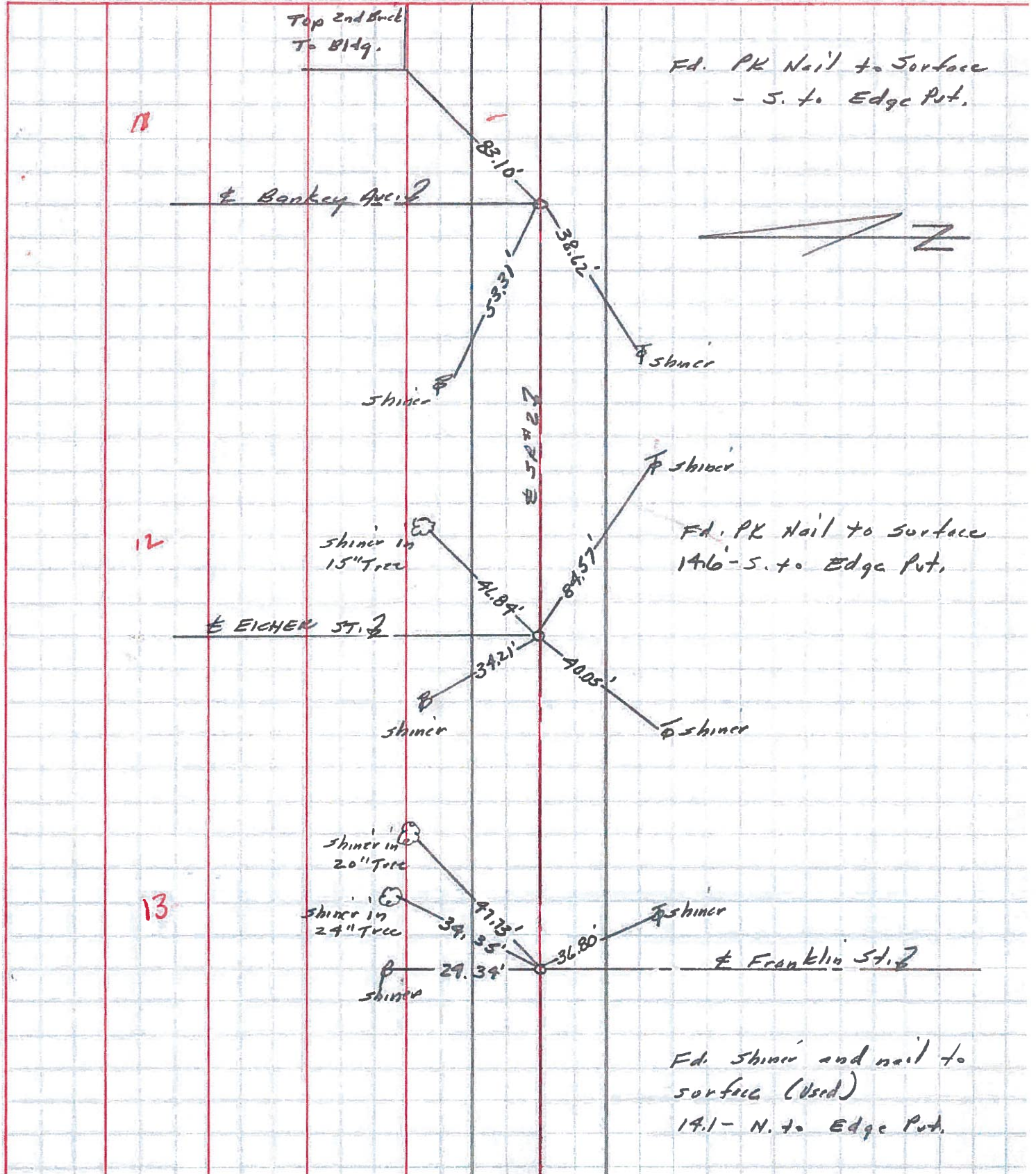
~~14.6~~ ~~JORT~~ ~~EDGE PAVEMENT~~ FACE of Curb

S.L.M. 187+22



PERSONNEL	TITLE	PERSONNEL	TITLE	COUNTY	DATE
Stone	Notes			Fulton	19 June 72
Michalak	H.C.			S. R. #2	WEATHER Humid
Jenna	R.C.			SEC. Arch bald	TEMP. 80°
Gurtis	Flag				

DESCRIPTION References to Control Points JOB NO. _____



County FULTON S.R. 2

Township GERMAN

Section 32

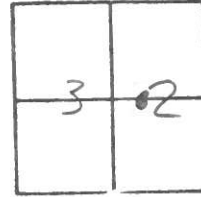
T2N, R5E

Personnel Hoffman
HOUSEHOLDER
BARNHIZER

Date 7-5-84

Weather PT CLOUDY

Temp. + 70



#12

SLM 187+00

Fd: PK. @ SURFACE

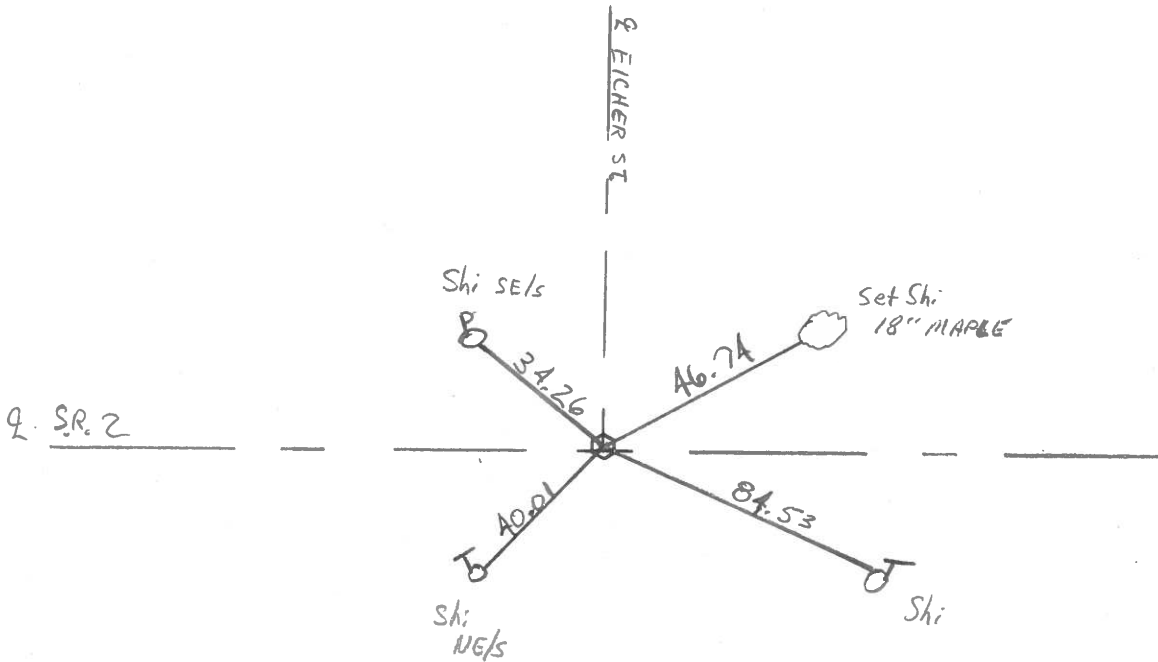
14.6 to SEP

ON E of Both PANTS

SET PK. + WASHER

10-5-84

C.L



PERSONNEL	TITLE	PERSONNEL	TITLE	COUNTY	DATE	WEATHER	TEMP.
Stone	Notes			Fulton	17 June 72	Humid	80°
Michaelak	H.C.			#2			
Jenna	P.C.			Arch bald			
Curtis	Flag						

DESCRIPTION References to Control Points JOB NO. _____

