

O.D.O.T. DISTRICT 2 SURVEY OFFICE

PERSONNEL

REFERENCE NO. ~~13A~~ SHEET 15 OF 23

NOTES LOEHRKE

H.C. ROUSOS

R.C. CANTERBURY

DATE 8-9-95

WEATHER Cloudy

TEMP. +75

ROUTE S.R.2

COUNTY FULTON

TOWNSHIP GERMAN

SECTION 32

T. 7 NR. S E

Reset

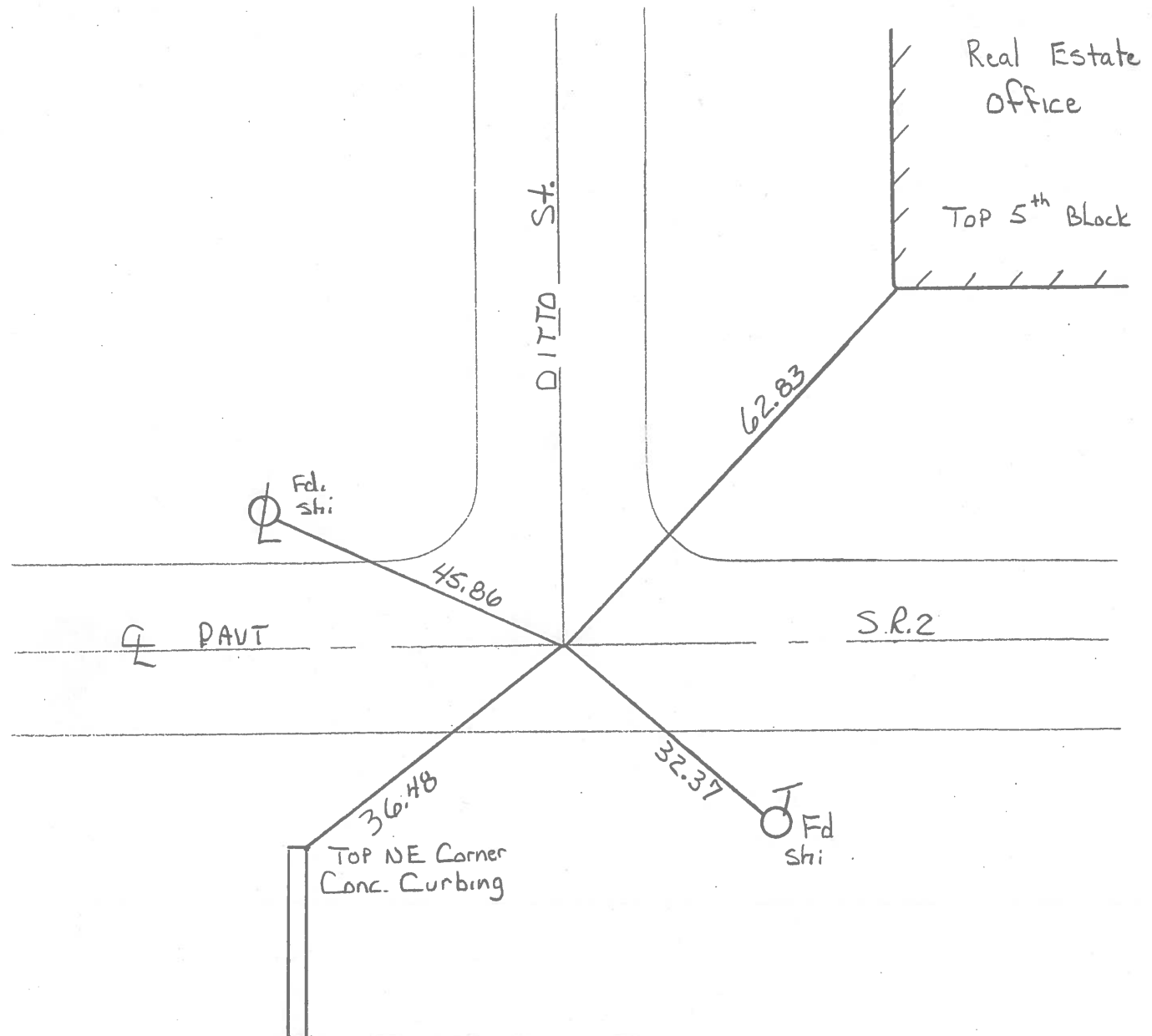
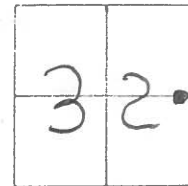
TYPE MONUMENT P.K. / WASHER 9-4-96

ON SURFACE - ~~BELOW~~ YES

~~LEFT - & PAV'T. - RIGHT~~ Both

14.4 TO RT ~~EDGE PAVEMENT~~ FACE of Curb

S.L.M. 200 ± 58



County FULTON S.R. 2

Township GERMAN

Section 32

T2N, R5E

Personnel Hoffman

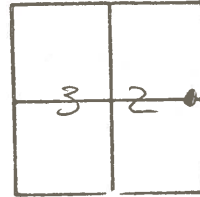
HOUSEHOLDER

BARNHISEL

Date 7-5-84

Weather PT CLOUDY

Temp. +70



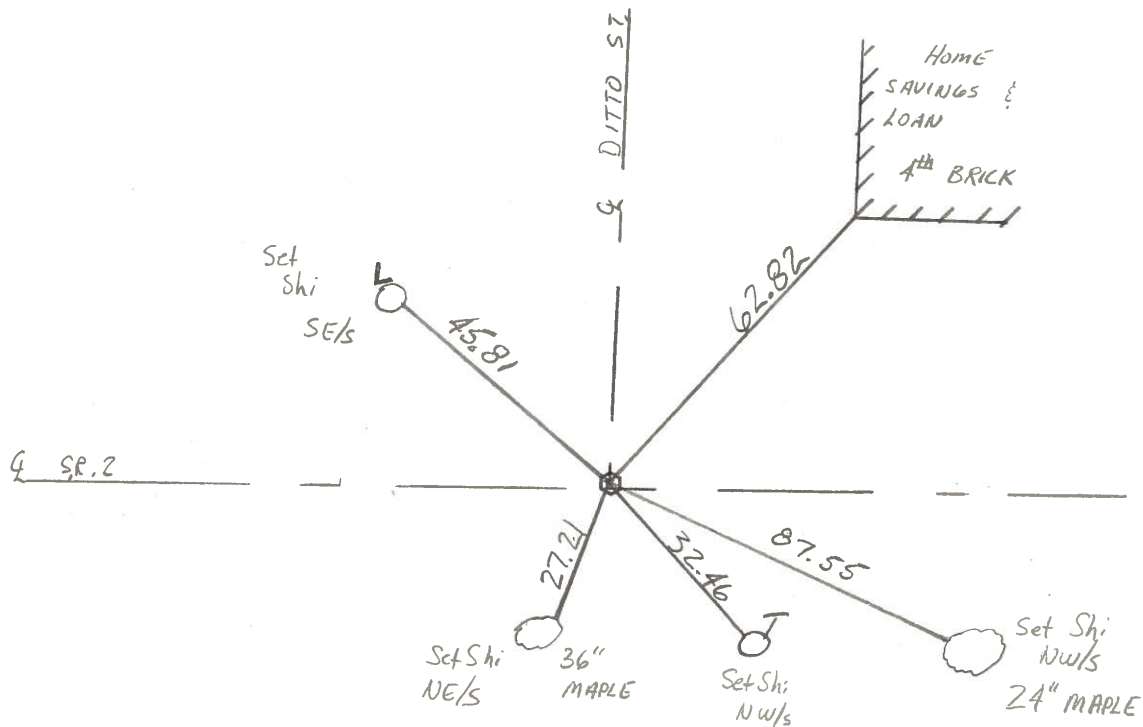
#14 13-A

Fd: PK NAIL @ SURFACE

SLM 200+33

1/4.4 to SEP.
ON E of Both PARTS.

SET PK+WASHER
10-5-84
C.L.



PERSONNEL	TITLE	PERSONNEL	TITLE	COUNTY	DATE
Stone	Notes			Fulton	14 June 72
Michalak	H.C.			S. R. #2	WEATHER Wover
Denno	R.C.			SEC. Archbold	TEMP. 84°
Curtis	RS				

DESCRIPTION References to Control Points JOB NO. _____

