

O.D.O.T. DISTRICT 2 SURVEY OFFICE

PERSONNEL _____

REFERENCE NO. 13 B

SHEET _____ OF _____

NOTES Loehrike

H.C. Rousos

R.C. CANTERBURY

DATE 11-1-96

WEATHER Cold Windy

TEMP. +36

ROUTE S.R. 66

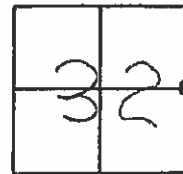
COUNTY FULTON

TOWNSHIP GERMAN

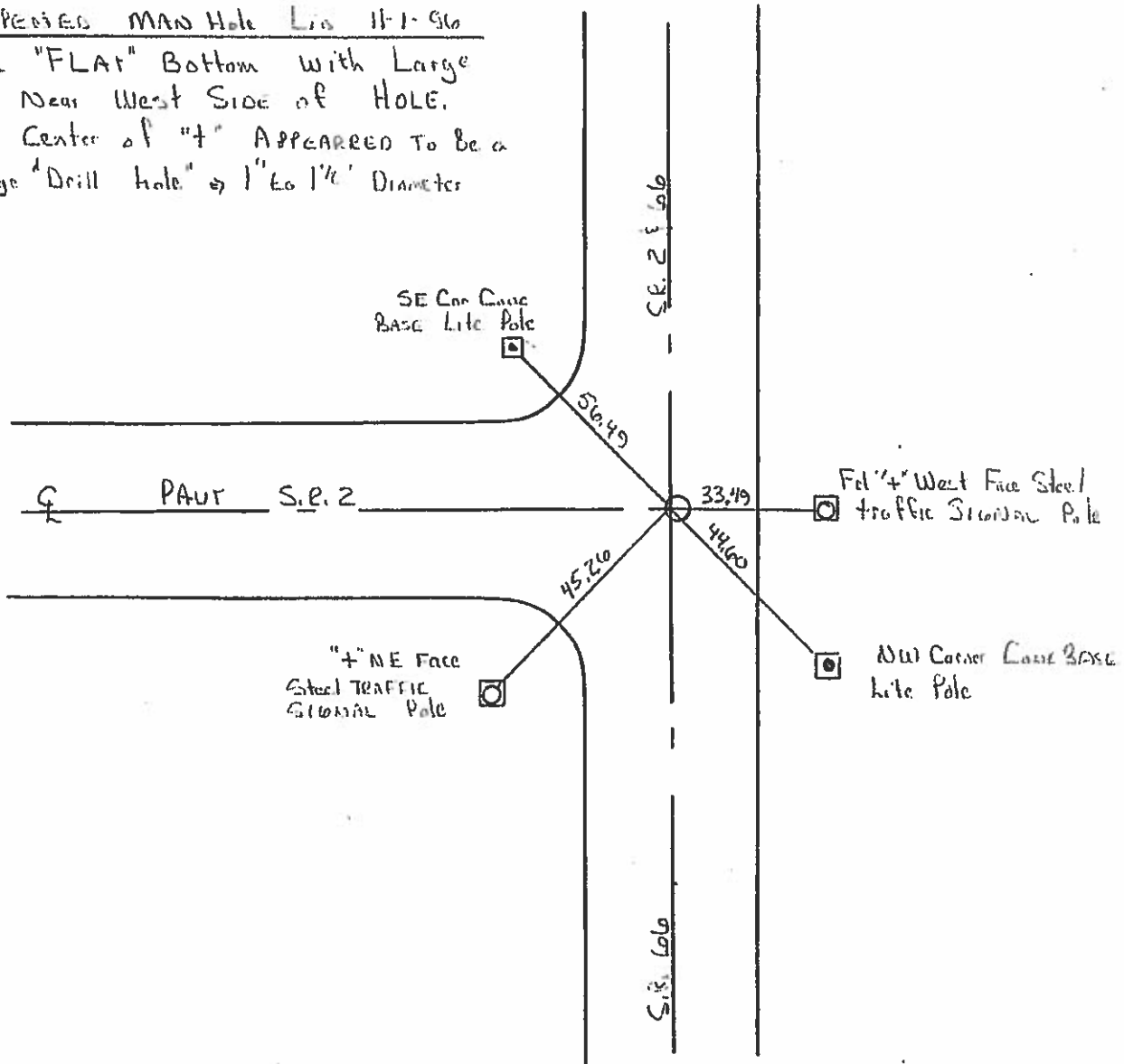
SECTION 32

T 7 N R 5 E

TYPE MONUMENT "+" Top of Stone - in ManHole
 ON SURFACE - BELOW ± 1/2 ft Below Lio
 LEFT- & PAV'T. - RIGHT Both
 TO EDGE PAVEMENT
 S.L.M. 204+03 S.R. 2 = 130+63 S.R. 66



OPENED MAN Hole Lio 11-1-96
 Fd "FLAT" Bottom with Large
 "+" Near West Side of HOLE.
 AT Center of "+" APPEARED TO be a
 Large "Drill hole" of 1" to 1 1/2" Diameter



O.D.O.T. DISTRICT 2 SURVEY OFFICE

PERSONNEL

REFERENCE NO. 7-A

SHEET 17 OF 24

NOTES LOEHRKE

H.C. Rousos

R.C. CANTERBURY

DATE 8-9-95

WEATHER RAIN

TEMP. +72

ROUTE S.R. 66 & S.R. 2

COUNTY FULTON

TOWNSHIP GERMAIN

SECTION 32

T. 7 N. R. 5 E.

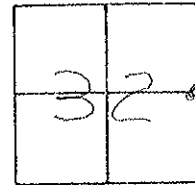
TYPE MONUMENT ON MANHOLE LID

ON SURFACE - BELOW _____

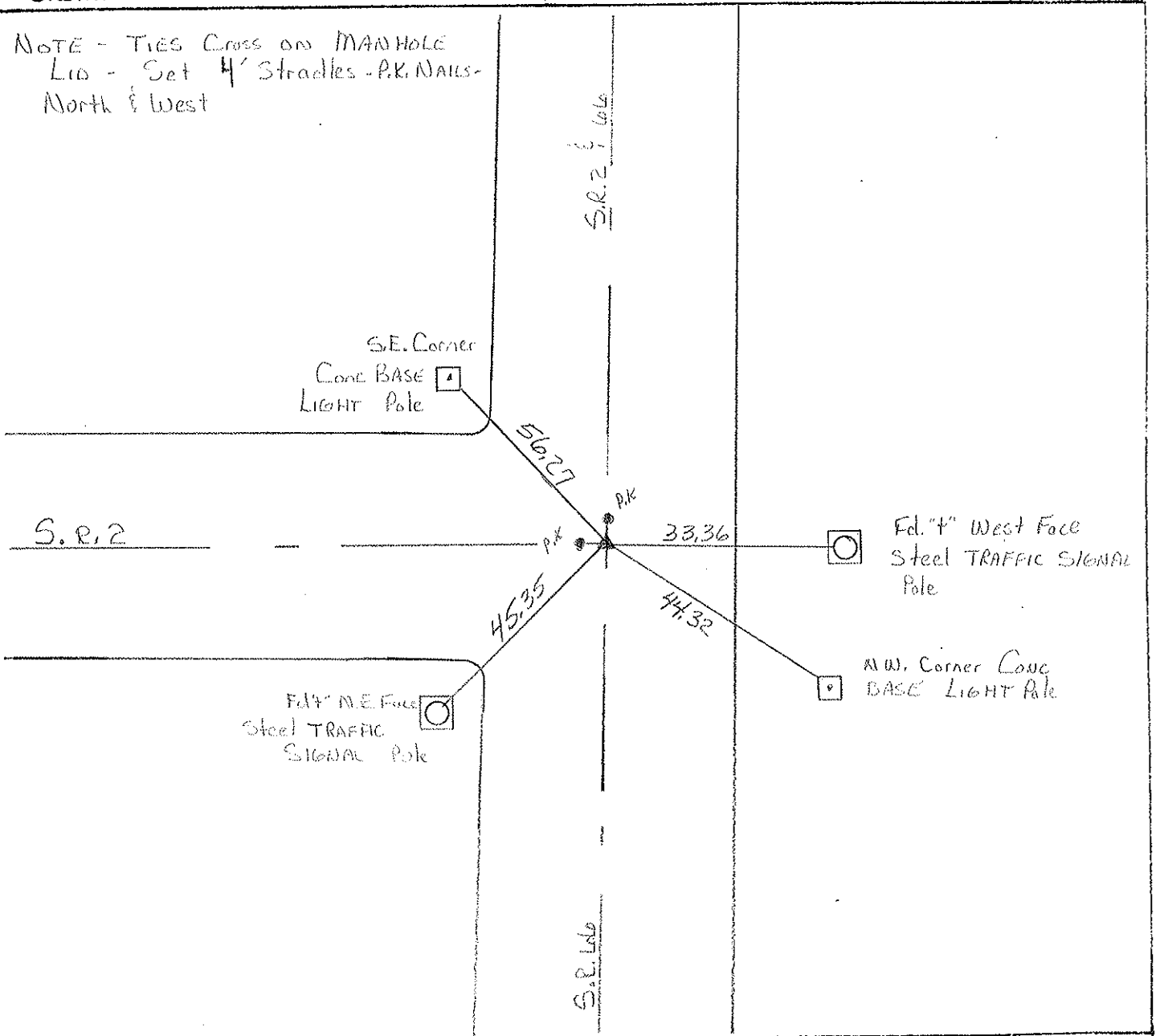
LEFT - ☉ PAV'T. - RIGHT BOTH

31.1 TO East EDGE PAVEMENT FACE of Curb

S.L.M. 130 + 63 - SLM S.R. 66 & S.R. 2 = 204 + 03



NOTE - TIES Cross on MANHOLE Lid - Set 4' Straddles - P.K. NAILS - North & West



O.D.O.T. DISTRICT 2 SURVEY OFFICE

PERSONNEL _____

REFERENCE NO. 13 B

SHEET _____ OF _____

NOTES Loehrke

H.C. Rousos

R.C. CANTERBURY

DATE 11-1-96

WEATHER Cold Windy

TEMP. +36

ROUTE S.R. 66

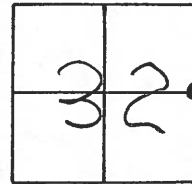
COUNTY FULTON

TOWNSHIP GERMAN

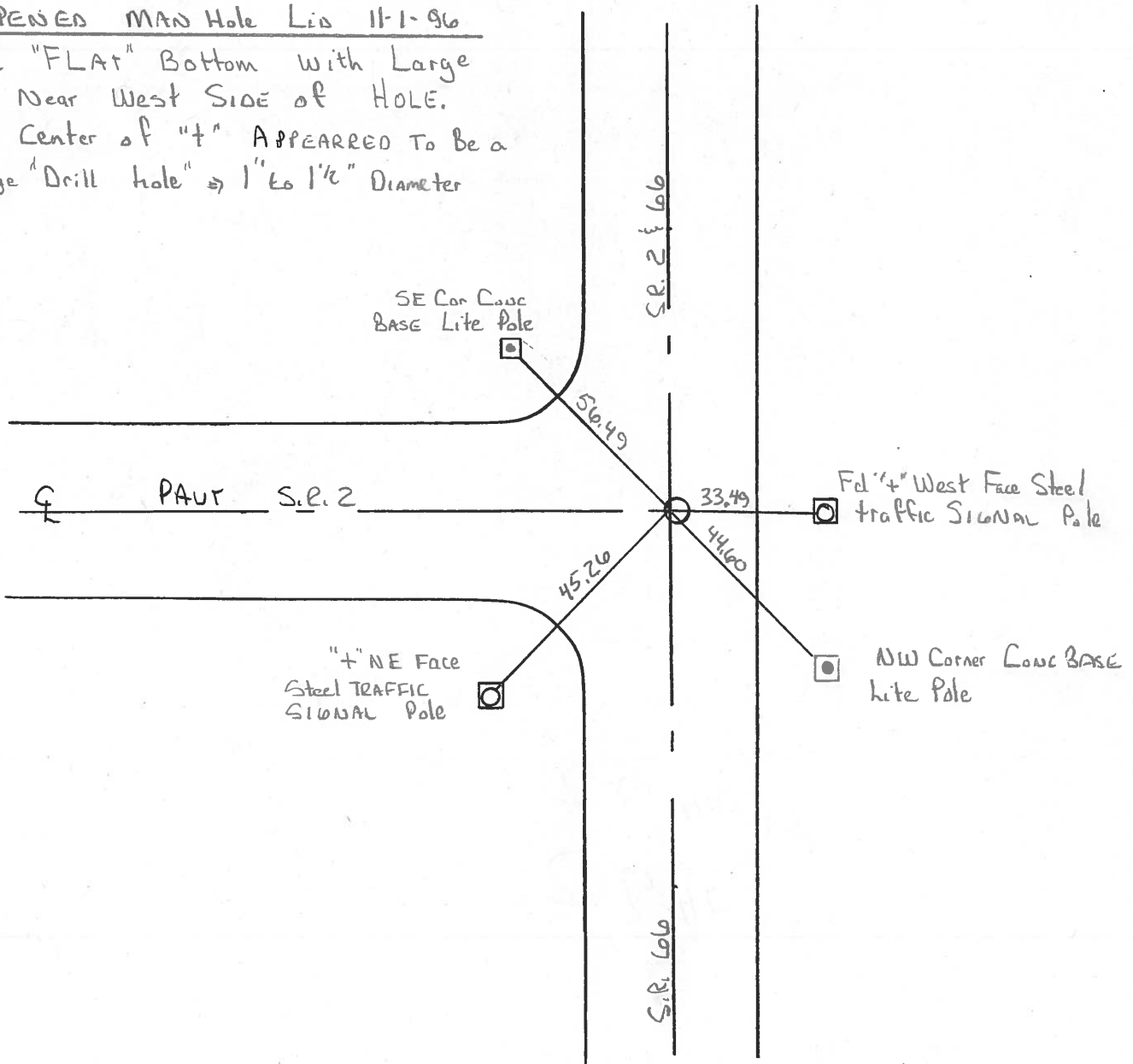
SECTION 32

T 7 N R 5 E

TYPE MONUMENT "+" Top of Stone - in MANHOLE
 ON SURFACE - BELOW ± 1/2 ft Below Lid
 LEFT - ☉ PAV'T. - RIGHT Both
 TO EDGE PAVEMENT
 S.L.M. 204+03 S.R. 2 = 130+63 S.R. 66



OPENED MAN Hole Lid 11-1-96
 Fd "FLAT" Bottom with Large
 "+" Near West Side of HOLE.
 AT Center of "+" APPEARED TO Be a
 Large "Drill hole" ⇒ 1" to 1 1/2" Diameter



County FULTON S.R. 66 @ SR2

Date 7-5-84

Township GERMAN

Weather PT CLOUDY

Section 32

Temp. 70

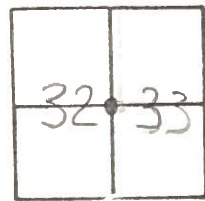
T2N, R5E

Personnel Hoffman

HOUSEHOLDER

BARN HISEL

13-B



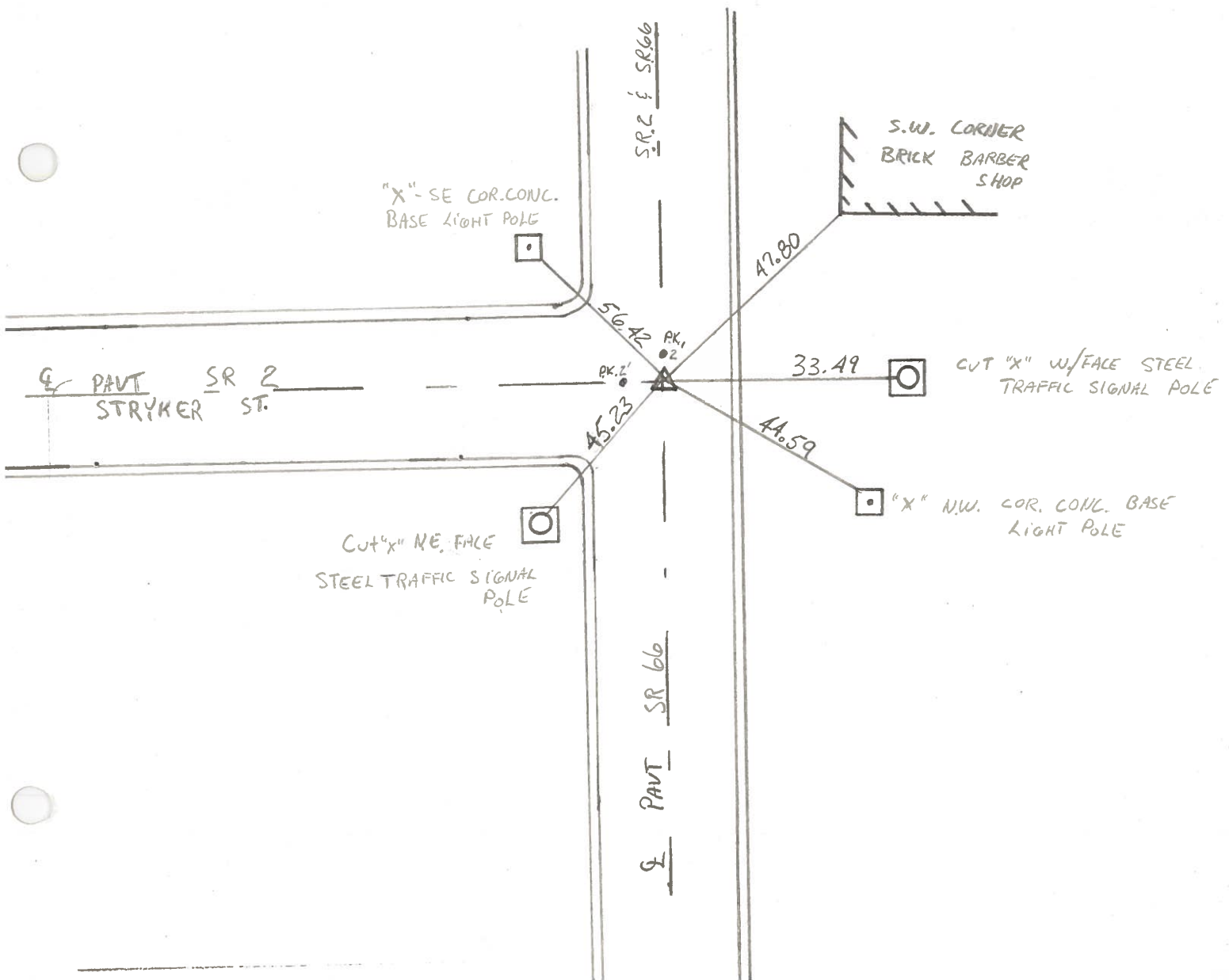
Fd: "4" Top of steel MANHOLE LID

SLM SR2 = 203+77

RECORDED P.L. Sta 190+00

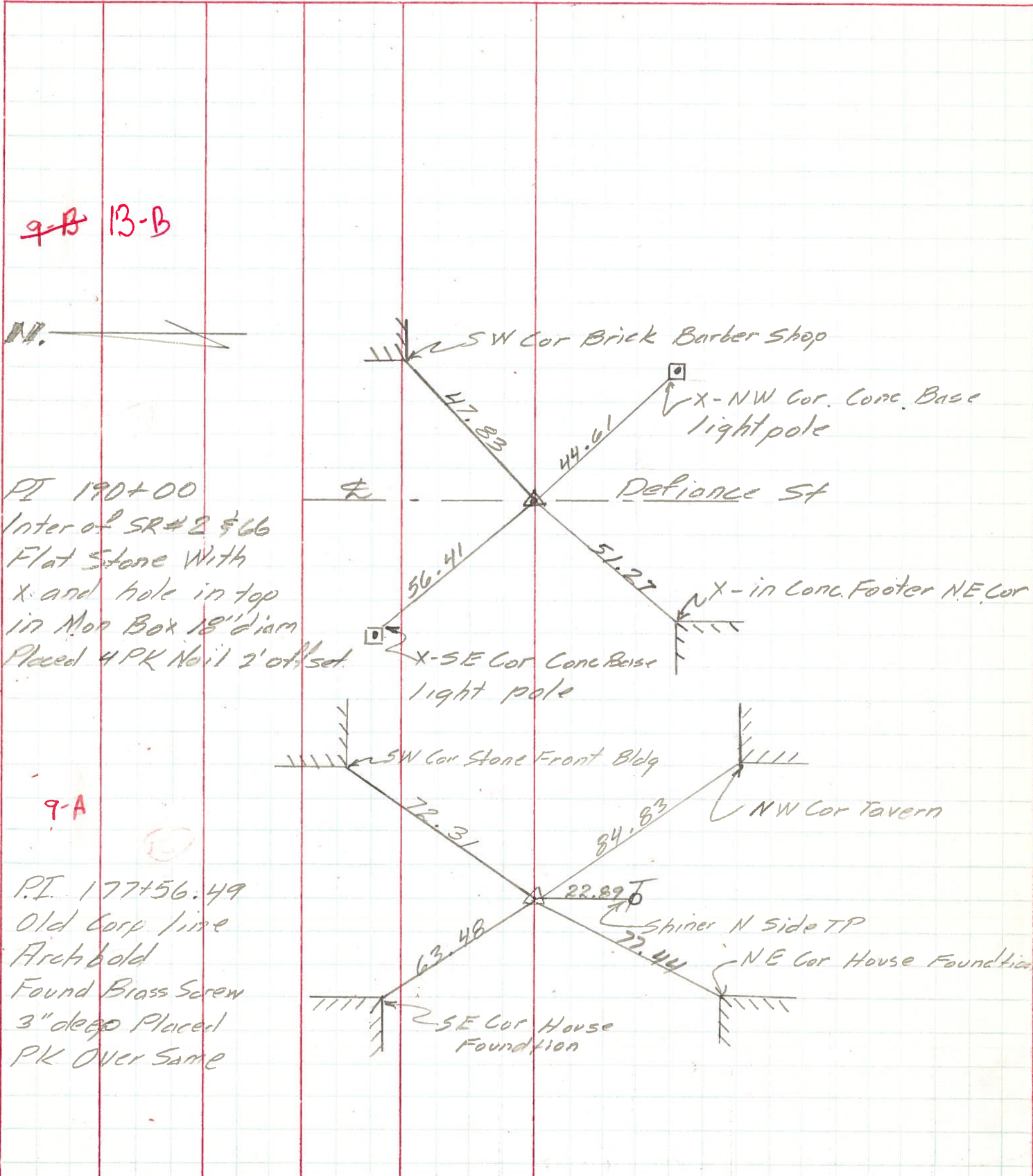
TIES CROSSED ON M.H. LID

SET 2' STRADLES PK NAILS N+W C.L.



PERSONNEL	TITLE	PERSONNEL	TITLE	COUNTY	DATE
Lovys		Brindley		Fv	7/1/71
Eriksen				S. R. # 2	WEATHER Fair
Eav				SEC. W. & Fv Coline to later 2 & 66	TEMP. 80°
Badenhop					

DESCRIPTION Rewitness to Control Points JOB NO. _____



PERSONNEL TITLE PERSONNEL TITLE

COUNTY Fulton

DATE OK 1-22-58

12-12-58

S. R. #2

WEATHER N. W. V. OK 10-26-61

SEC.

TEMP.

DESCRIPTION

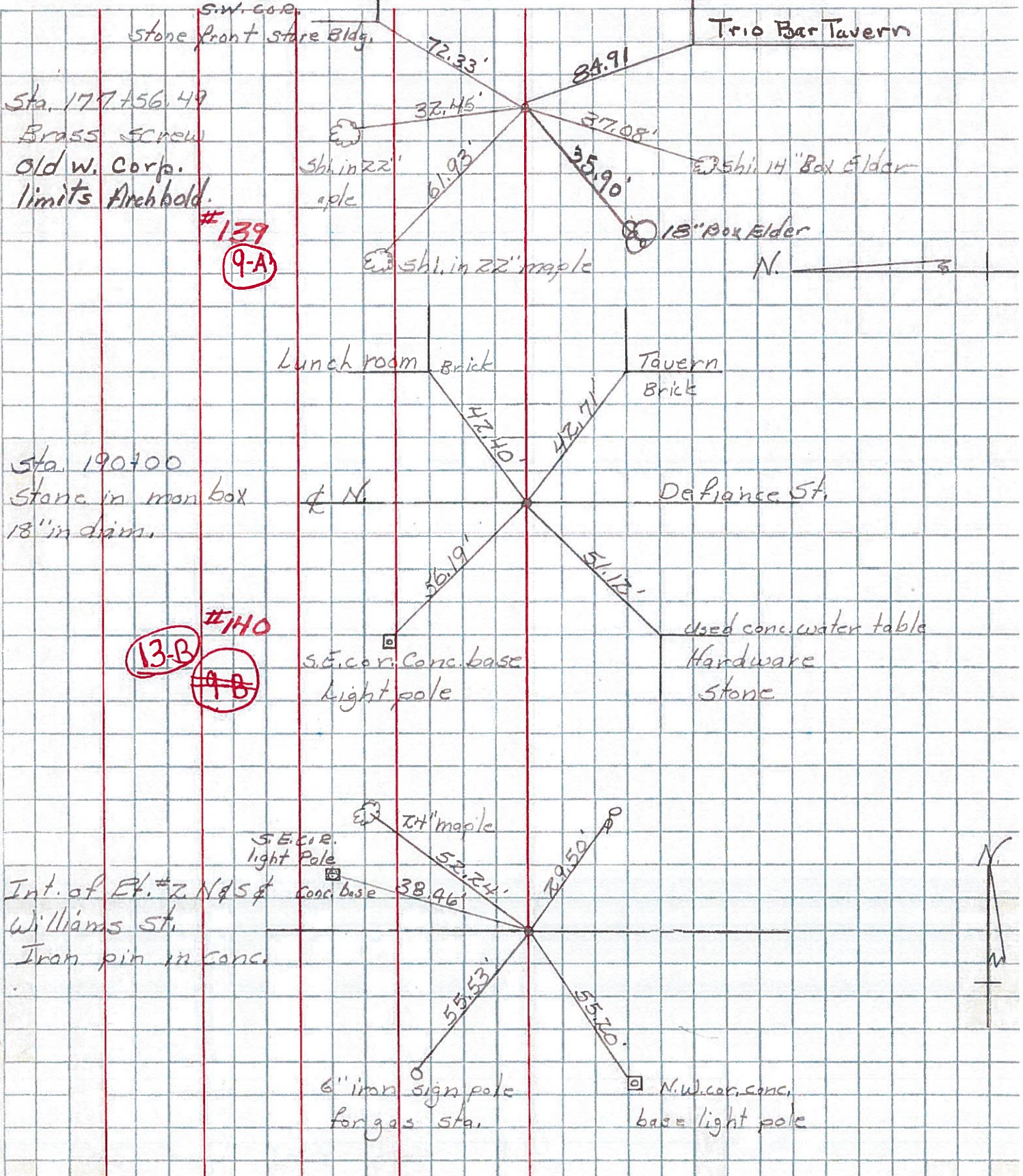
Archbold Ohio

JOB NO.

LEFT

CENTER LINE

RIGHT



#139
9-A

#140
13-B
~~9-B~~

