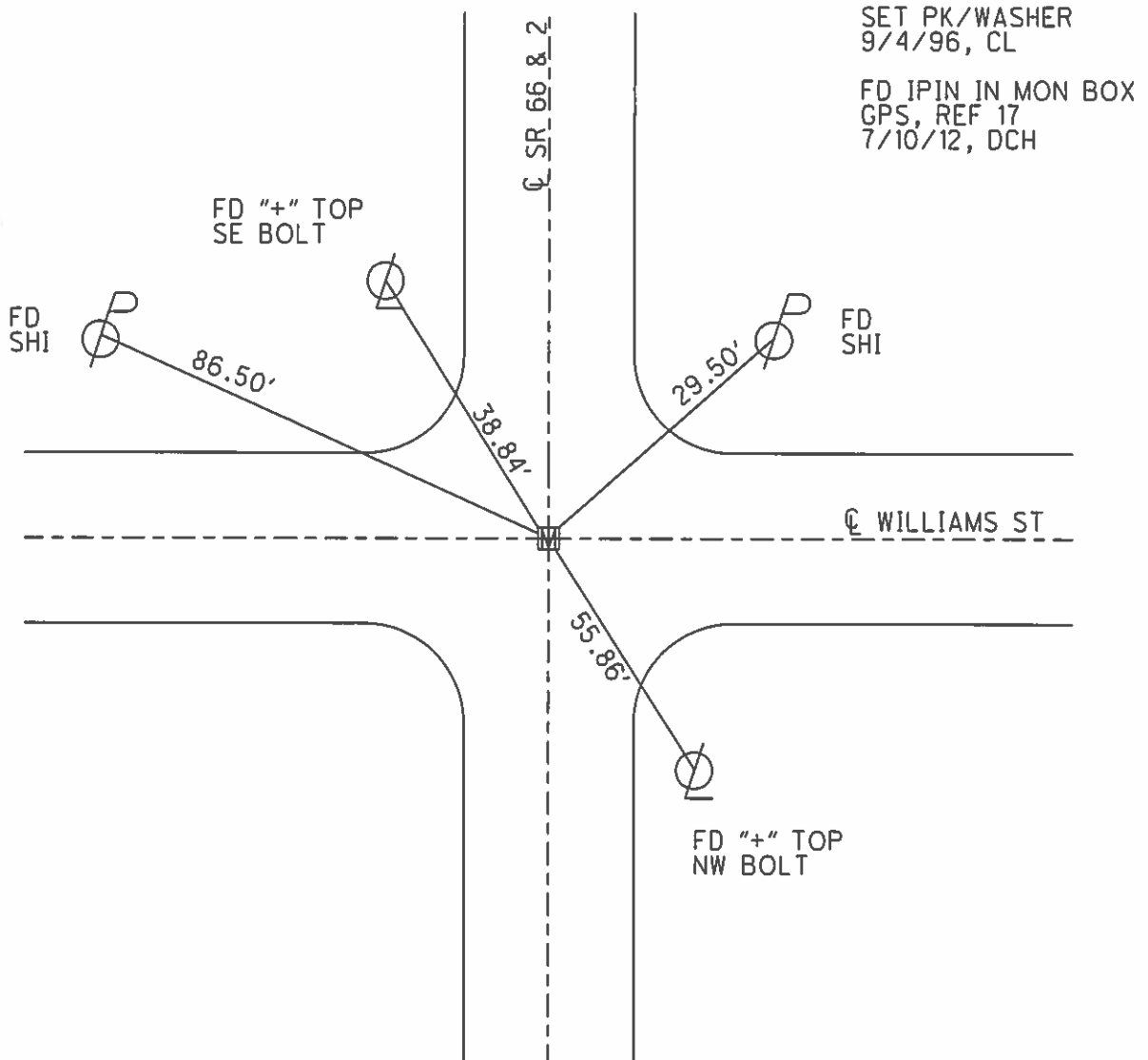
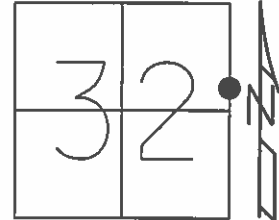


O.D.O.T. DISTRICT 2 SURVEY OFFICE (USE ONLY)

PERSONNEL \_\_\_\_\_ REFERENCE NO. 13 C SHEET 1 OF 9  
 NOTES LOEHRKE DATE 8/9/95 ROUTE SR 66, SR 2  
 H.C. ROUSOS WEATHER CLOUDY COUNTY FULTON  
 R.C. CANTERBURY TEMP. 77° TOWNSHIP GERMAN  
 \_\_\_\_\_ SECTION 32  
 \_\_\_\_\_ T 7 N R 5 E

TYPE MONUMENT 1" IPIN  
~~ON SURFACE~~ - BELOW 1/2"  
 LEFT - ☉ PAV'T - RIGHT ON  
- TO - EDGE PAVEMENT  
 S.L.M. 211+66

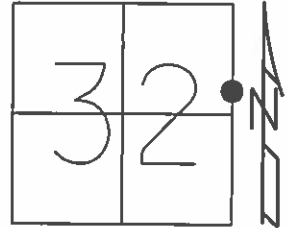
Grid: Northing: - Easting: -



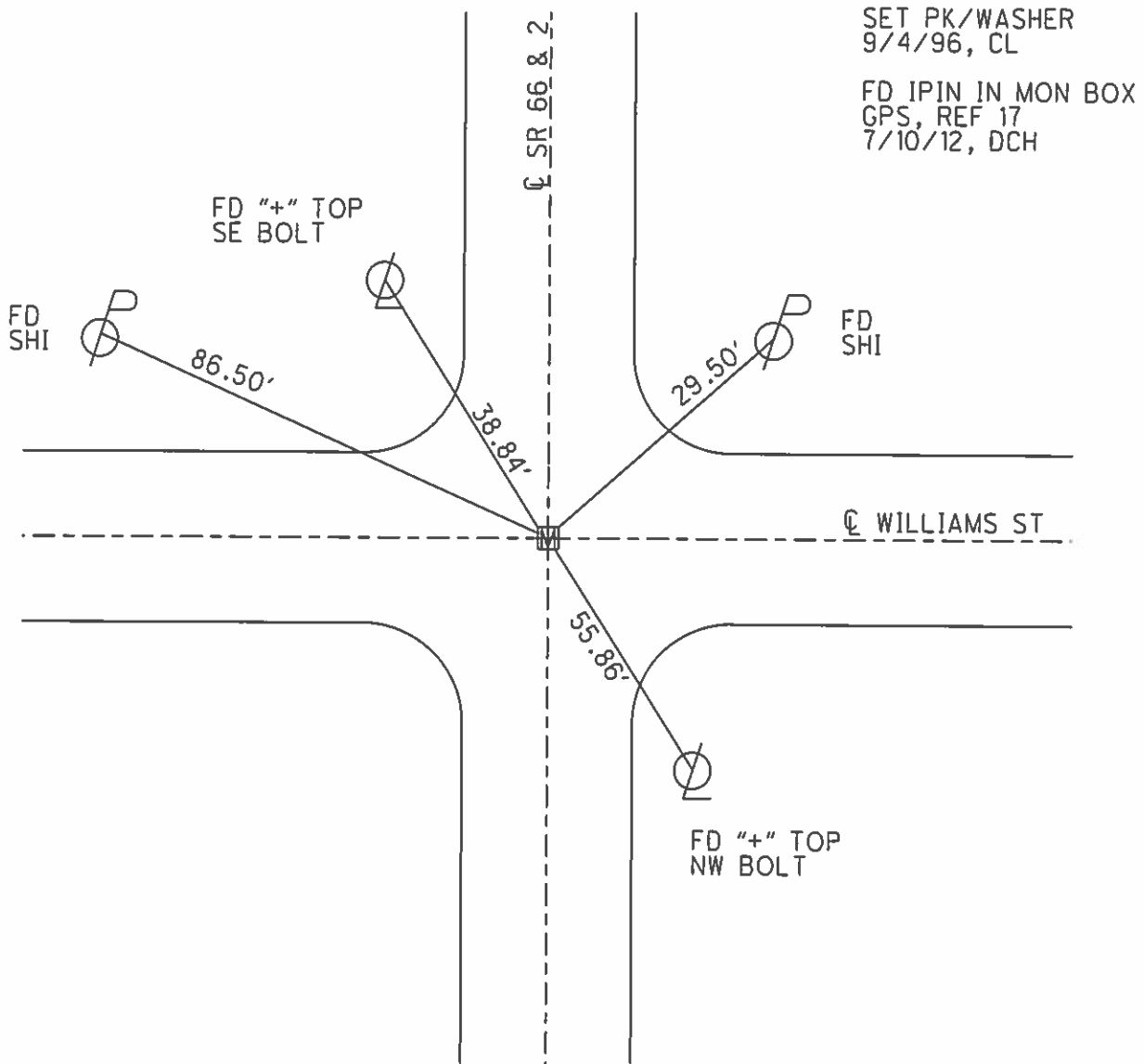
O.D.O.T. DISTRICT 2 SURVEY OFFICE (USE ONLY)

PERSONNEL \_\_\_\_\_ REFERENCE NO. 7 B SHEET 1 OF 8  
 NOTES LOEHRKE DATE 8/9/95 ROUTE SR 66, SR 2  
 H.C. ROUSOS WEATHER CLOUDY COUNTY FULTON  
 R.C. CANTERBURY TEMP. 77° TOWNSHIP GERMAN  
 \_\_\_\_\_ SECTION 32  
 \_\_\_\_\_ T 7 N R 5 E

TYPE MONUMENT 1" IPIN  
~~ON SURFACE~~ - BELOW 1/2"  
 LEFT - ☉ PAV'T - RIGHT ON  
- TO - EDGE PAVEMENT  
 S.L.M. 211+66



Grid: Northing: \_\_\_\_\_ Easting: \_\_\_\_\_



# O.D.O.T. DISTRICT 2 SURVEY OFFICE

PERSONNEL \_\_\_\_\_

REFERENCE NO. 13C

SHEET 17 OF 23

NOTES LOEHKE

H.C. Rousar

R.C. CANTERBURY

DATE 8-9-95

WEATHER CLOUDY

TEMP. +77°F

ROUTE SR 66 FSR 2

COUNTY FULTON

TOWNSHIP GERMAN

SECTION 32

T 7 N R 5 E

Set P.K. / WASHER  
9-4-96

TYPE MONUMENT 1" I-ROD

~~ON SURFACE - BELOW~~ 1/2" BELOW

~~LEFT - & PAV'T. - RIGHT~~ &

~~TO~~ EDGE PAVEMENT

S.L.M. 211-66

