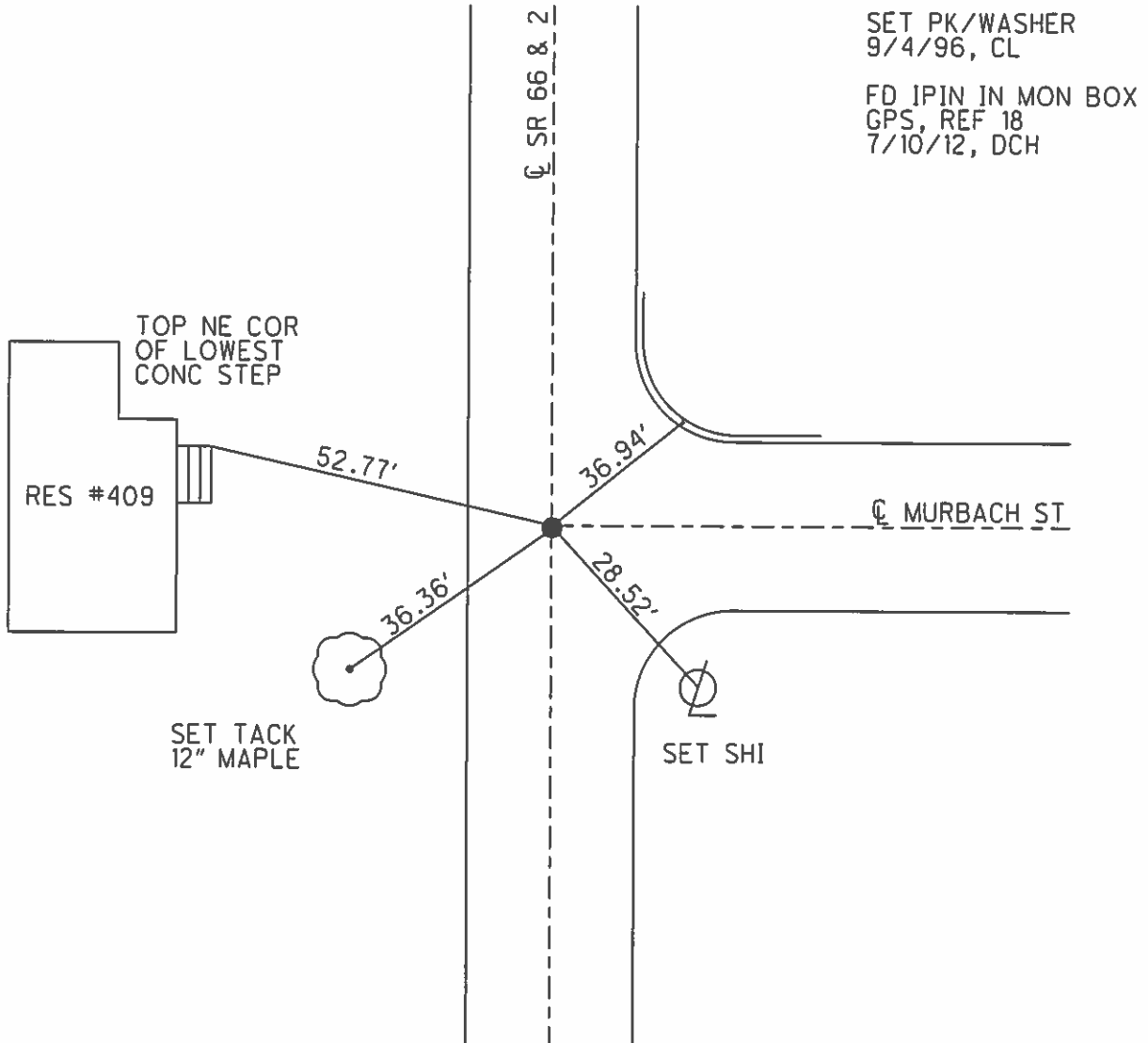
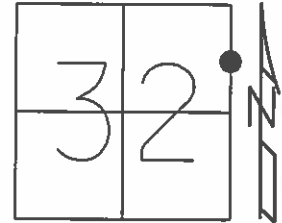


O.D.O.T. DISTRICT 2 SURVEY OFFICE (USE ONLY)

PERSONNEL \_\_\_\_\_ REFERENCE NO. 13 D SHEET 2 OF 9  
 NOTES LOEHRKE DATE 8/9/95 ROUTE SR 66, SR 2  
 H.C. ROUSOS WEATHER CLOUDY COUNTY FULTON  
 R.C. CANTERBURY TEMP. 77° TOWNSHIP GERMAN  
 SECTION 32  
 T 7 N R 5 E

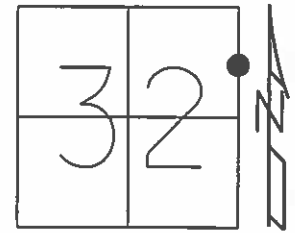
TYPE MONUMENT PK NAIL  
 ON SURFACE - ~~BELOW~~ ON  
 LEFT - ☉ PAV'T - RIGHT ON  
13.7' TO LT EDGE PAVEMENT  
 S.L.M. 214+90  
 Grid: Northing: - Easting: -



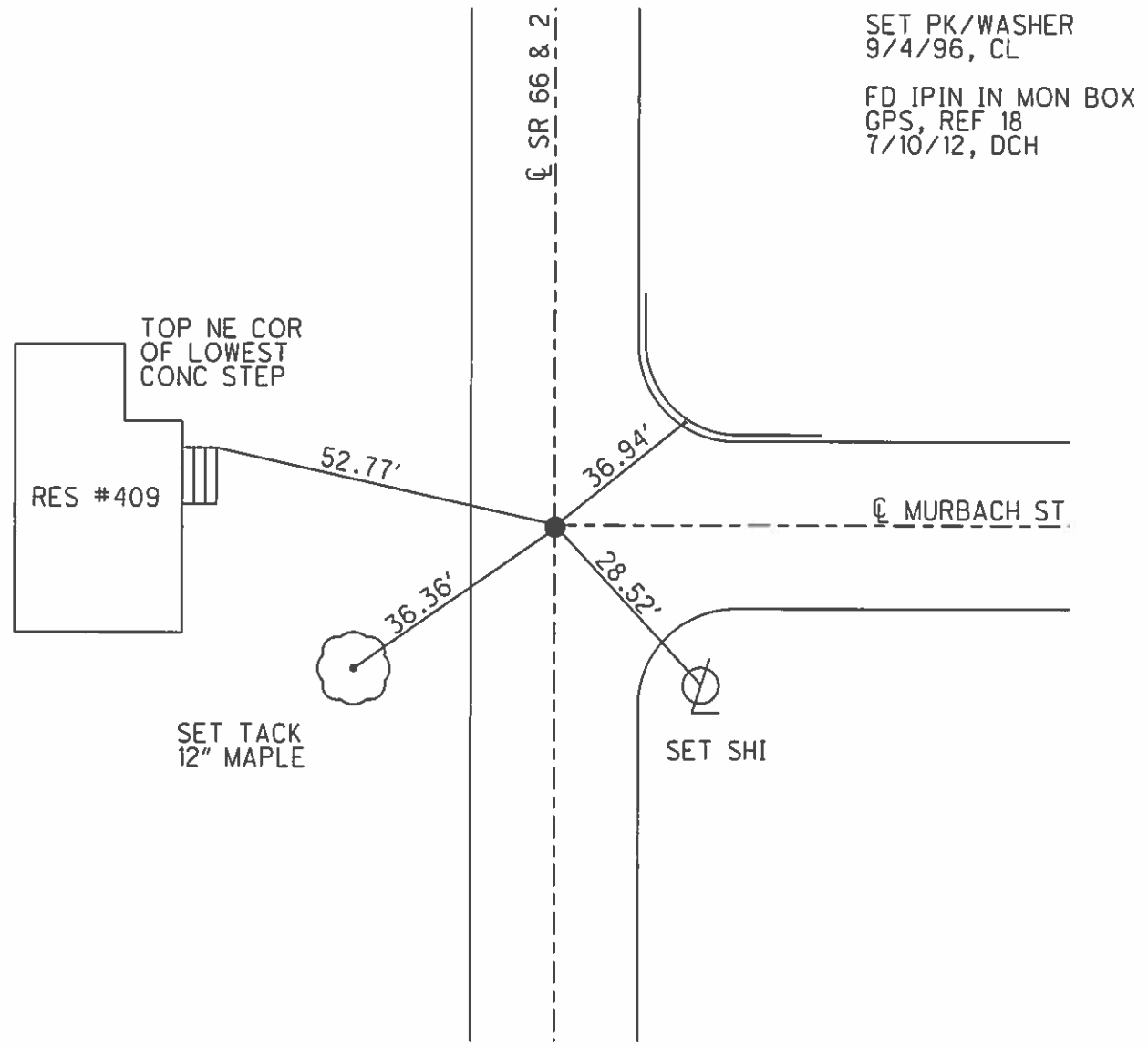
**O.D.O.T. DISTRICT 2 SURVEY OFFICE (USE ONLY)**

PERSONNEL \_\_\_\_\_ REFERENCE NO. 7 C SHEET 2 OF 8  
 NOTES LOEHRKE DATE 8/9/95 ROUTE SR 66, SR 2  
 H.C. ROUSOS WEATHER CLOUDY COUNTY FULTON  
 R.C. CANTERBURY TEMP. 77° TOWNSHIP GERMAN  
 \_\_\_\_\_ SECTION 32  
 \_\_\_\_\_ T 7 N R 5 E

TYPE MONUMENT PK NAIL  
 ON SURFACE - ~~BELOW~~ ON  
 LEFT - ☉ PAV'T - RIGHT ON  
13.7' TO LT EDGE PAVEMENT  
 S.L.M. 214+90



Grid: Northing: \_\_\_\_\_ Easting: \_\_\_\_\_



# O.D.O.T. DISTRICT 2 SURVEY OFFICE

PERSONNEL

REFERENCE NO. 13 D

SHEET 18 OF 23

NOTES LOEHRKE

H.C. Rowser

DATE 8-9-95

ROUTE SR 66 FSR 2

R.C. CANTERBURY

WEATHER CLOUDY

COUNTY FULTON

TEMP. +77°F

TOWNSHIP GERMAN

SECTION 32

T 7 N R 5 E

TYPE MONUMENT PK NAIL

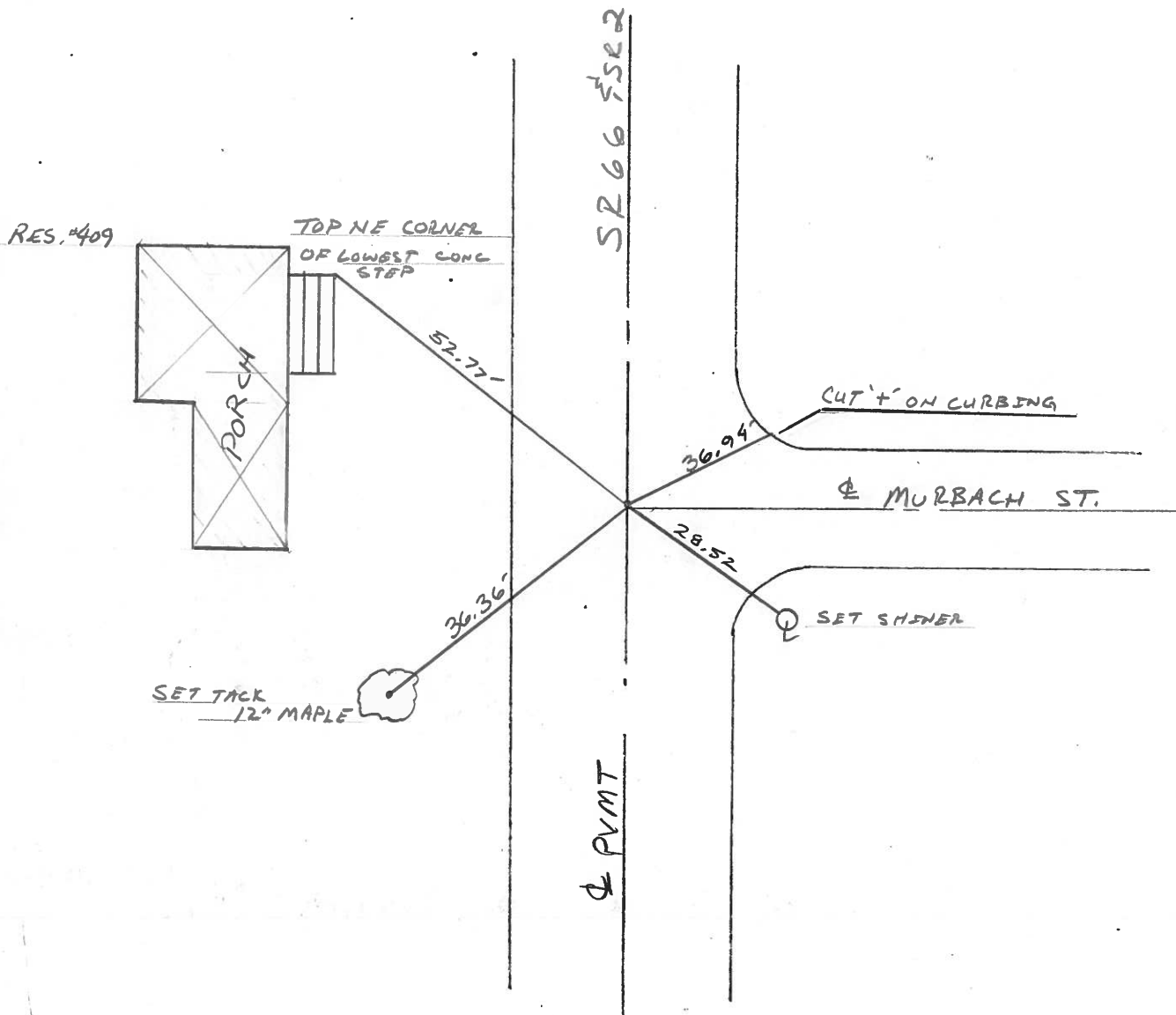
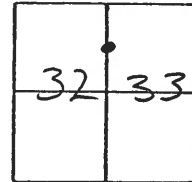
Set P.K. / WASHER  
9-4-96

ON SURFACE - ~~BELOW~~ ON SURFACE

LEFT-☉ PAV'T. - RIGHT ☉

13.77 TO LT EDGE PAVEMENT

S.L.M. 214+90



PERSONNEL TITLE PERSONNEL TITLE

COUNTY Fulton

DATE OK-1-22-58

S. R. # 2

WEATHER 12-12-58  
W. Knapp OK 10-26-61

SEC.

TEMP.

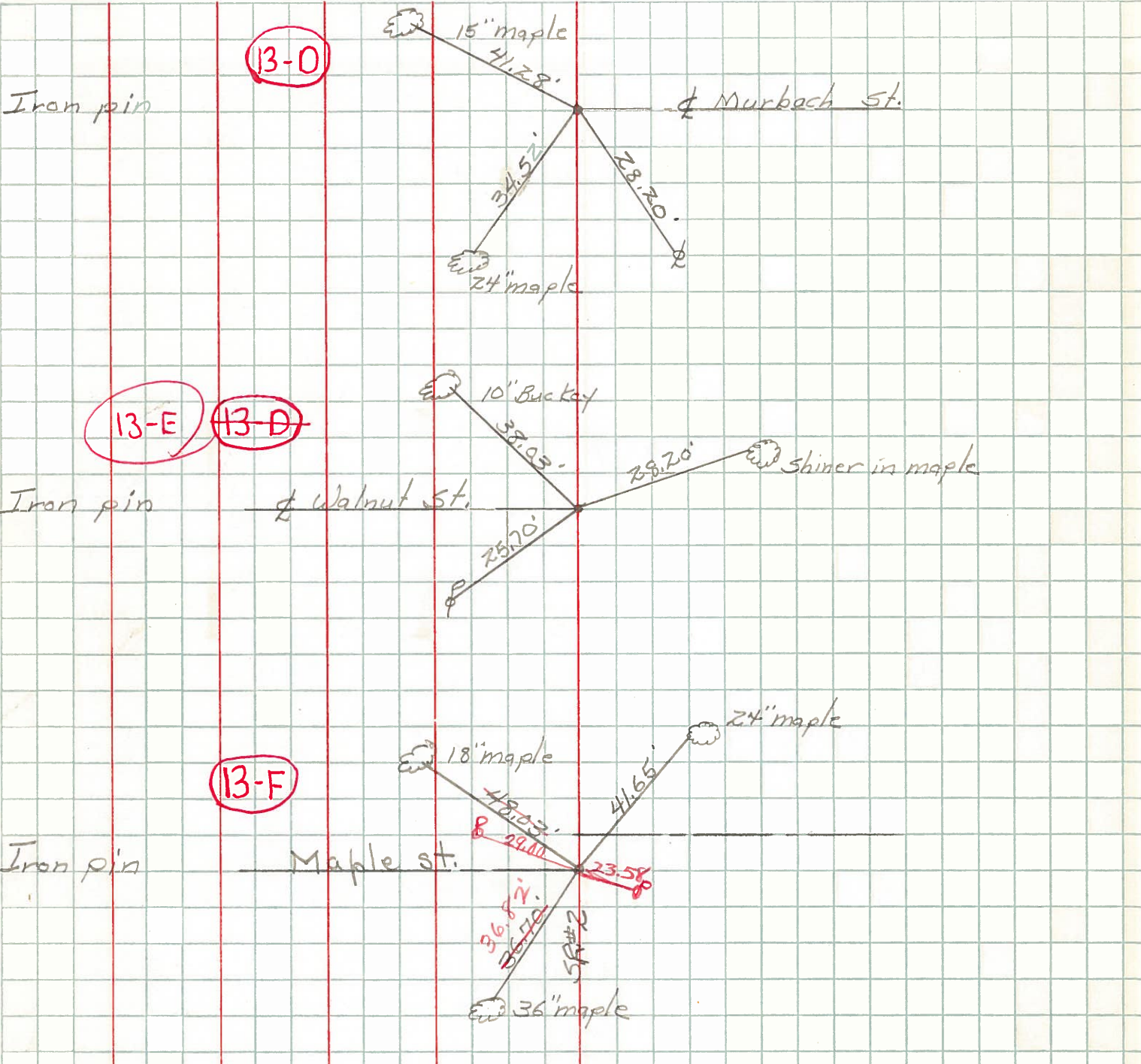
DESCRIPTION Street cors. in Archbold, Ohio.

JOB NO.

LEFT

CENTER LINE

RIGHT



S.P. #66 & Co. Rd. East  
E.F. Spk.

Shiner in ...	N.W.	32.50'
Shiner in 12' maple	N.N.W.	58.40'
shiner in P.	N.N.E.	45.46'
Face Fire Hyd.	N.E.	49.71'
Shiner P.P.	S.S.E.	36.43'