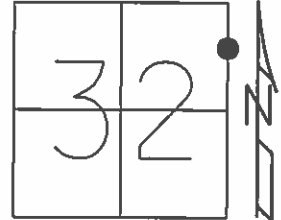


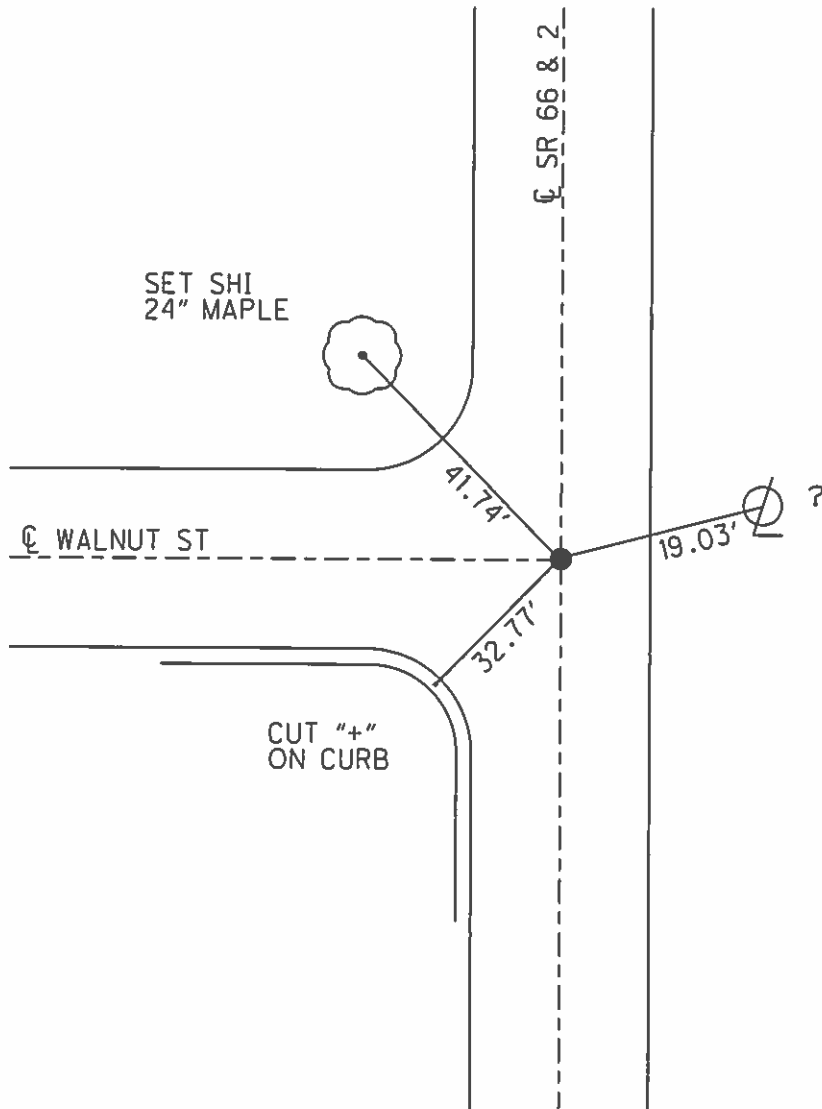
O.D.O.T. DISTRICT 2 SURVEY OFFICE (USE ONLY)

PERSONNEL _____ REFERENCE NO. 13 E SHEET 3 OF 9
 NOTES LOEHRKE DATE 8/9/95 ROUTE SR 66, SR 2
 H.C. ROUSOS WEATHER CLOUDY COUNTY FULTON
 R.C. CANTERBURY TEMP. 77° TOWNSHIP GERMAN
 _____ SECTION 32
 _____ T 7 N R 5 E

TYPE MONUMENT PK/WASHER
 ON SURFACE - ~~BELOW~~ ON
 LEFT - ☉ PAV'T - RIGHT ON
13.9' TO E EDGE PAVEMENT
 S.L.M. 217+47



Grid: Northing: _____ Easting: _____



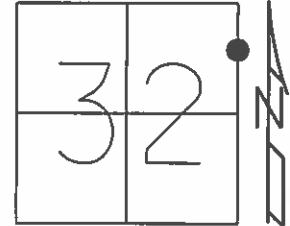
SET PK/WASHER
 9/4/96, CL

FD IPIN IN MON BOX
 GPS, REF 19
 7/10/12, DCH

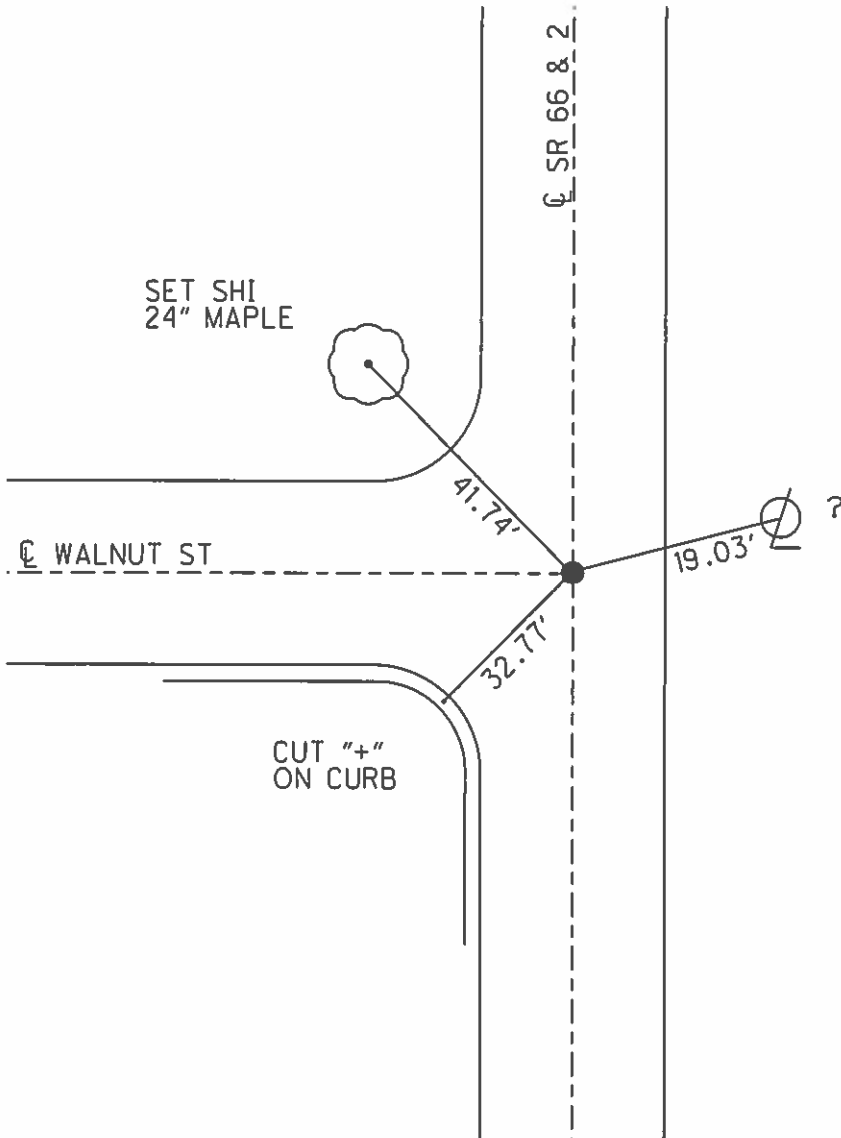
O.D.O.T. DISTRICT 2 SURVEY OFFICE (USE ONLY)

PERSONNEL _____ REFERENCE NO. 7 D SHEET 3 OF 8
 NOTES LOEHRKE DATE 8/9/95 ROUTE SR 66, SR 2
 H.C. ROUSOS WEATHER CLOUDY COUNTY FULTON
 R.C. CANTERBURY TEMP. 77° TOWNSHIP GERMAN
 _____ SECTION 32
 _____ T 7 N R 5 E

TYPE MONUMENT PK/WASHER
 ON SURFACE - ~~BELOW~~ ON _____
 LEFT - ☉ PAV'T - RIGHT ON _____
13.9' TO E EDGE PAVEMENT
 S.L.M. 217+47



Grid: Northing: _____ Easting: _____



SET PK/WASHER
 9/4/96, CL
 FD IPIN IN MON BOX
 GPS, REF 19
 7/10/12, DCH

O.D.O.T. DISTRICT 2 SURVEY OFFICE

PERSONNEL

REFERENCE NO. 13 E

SHEET 19 OF 23

NOTES LOEHRKE

H.C. ROUSAS

R.C. CANTERBURY

DATE 8-9-95

WEATHER CLOUDY

TEMP. +77°F

ROUTE SR 66 SR 2

COUNTY FULTON

TOWNSHIP GERMAN

SECTION 32

T 2 N R 5 E

Reset

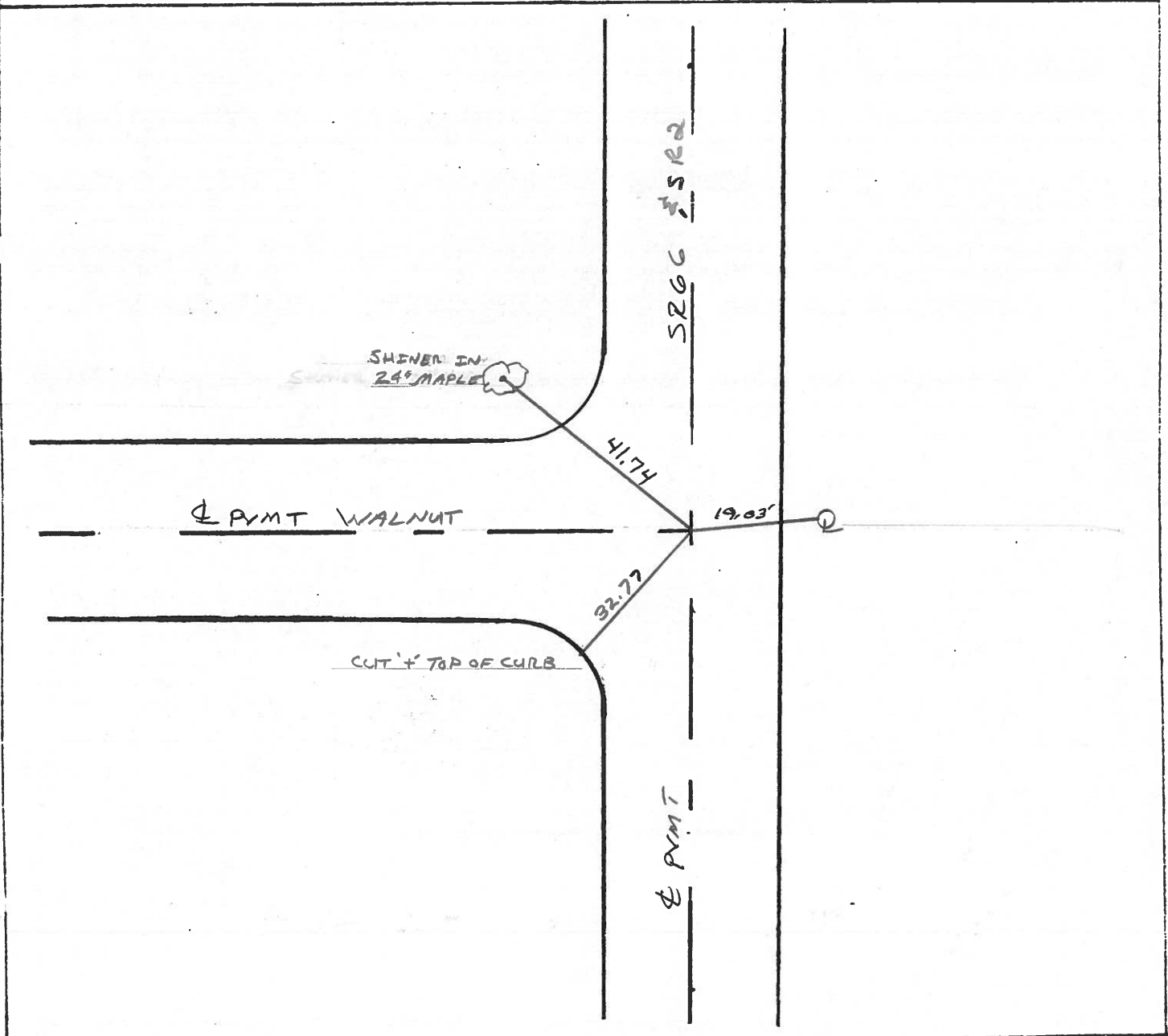
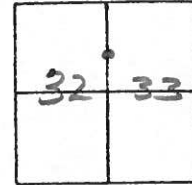
TYPE MONUMENT PK/WASHER 9-4-96

ON SURFACE - BELOW ON SURFACE

LEFT - ☉ PAV'T. - RIGHT ☉ SR 66 + WALNUT

13.9 TO E EDGE PAVEMENT (CURB)

S.L.M. 217 + 47



PERSONNEL TITLE PERSONNEL TITLE

COUNTY Fulton

DATE OK-1-22-58
12-12-58

S. R. # 2

WEATHER W. Windy P.R. 10-26-61

SEC.

TEMP.

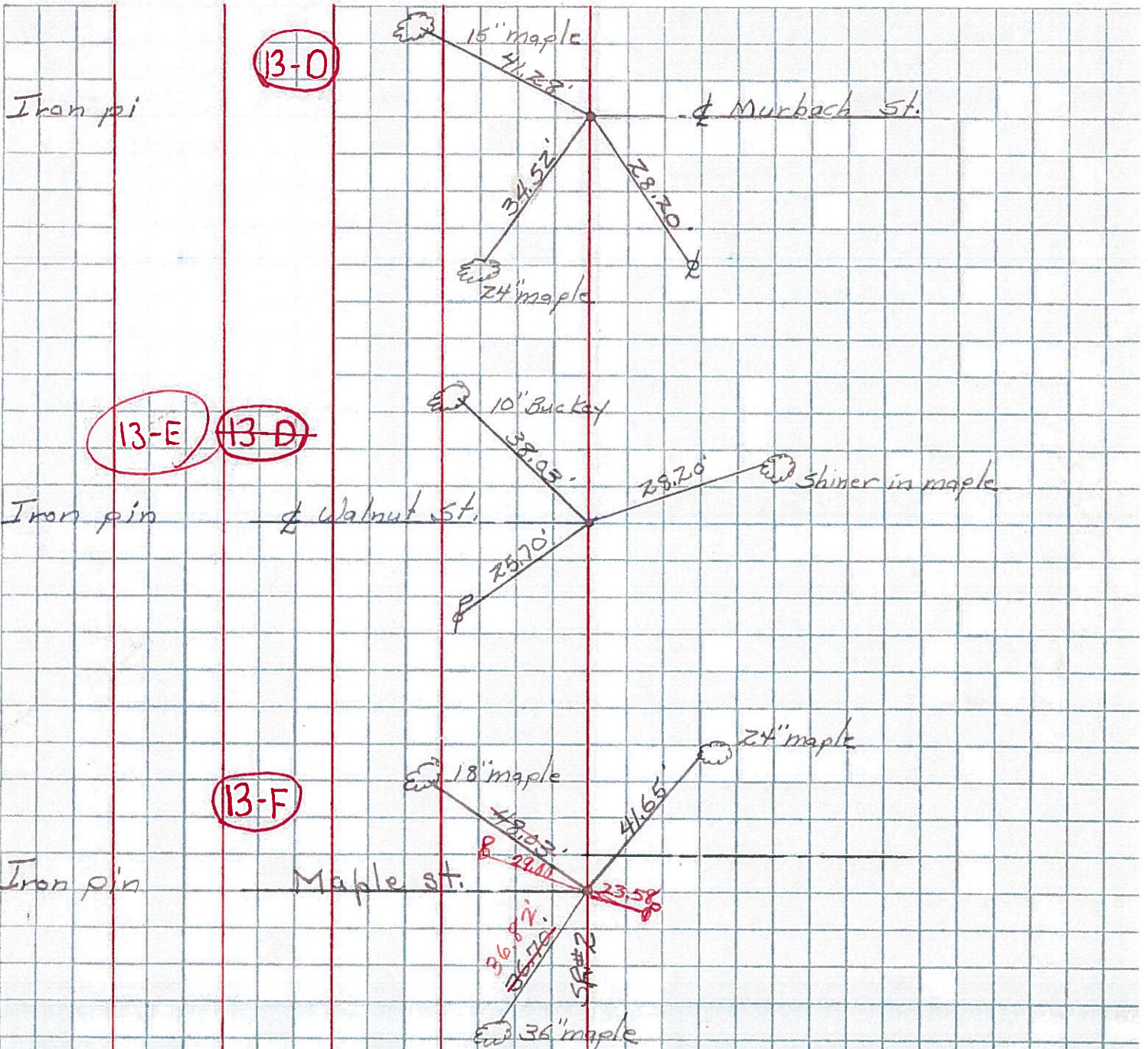
DESCRIPTION Street Cors. in Archbold, Ohio.

JOB NO.

LEFT

CENTER LINE

RIGHT



S.P. #66 #C. Ed East
P.P. spk.

Shiner in T.P.	N.W.	32.50
Shiner in 12' maple	N.N.W.	58.40
shiner in P.P.	N.W.E.	45.46
Face Fire Hyd.	N.E.	49.71
shiner P.P.	S.S.E.	36.40