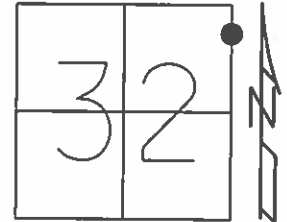


O.D.O.T. DISTRICT 2 SURVEY OFFICE (USE ONLY)

PERSONNEL \_\_\_\_\_ REFERENCE NO. 13 F SHEET 4 OF 9  
 NOTES LOEHRKE DATE 8/9/95 ROUTE SR 66, SR 2  
 H.C. ROUSOS WEATHER CLOUDY COUNTY FULTON  
 R.C. CANTERBURY TEMP. 77° TOWNSHIP GERMAN  
 \_\_\_\_\_ SECTION 32  
 \_\_\_\_\_ T 7 N R 5 E

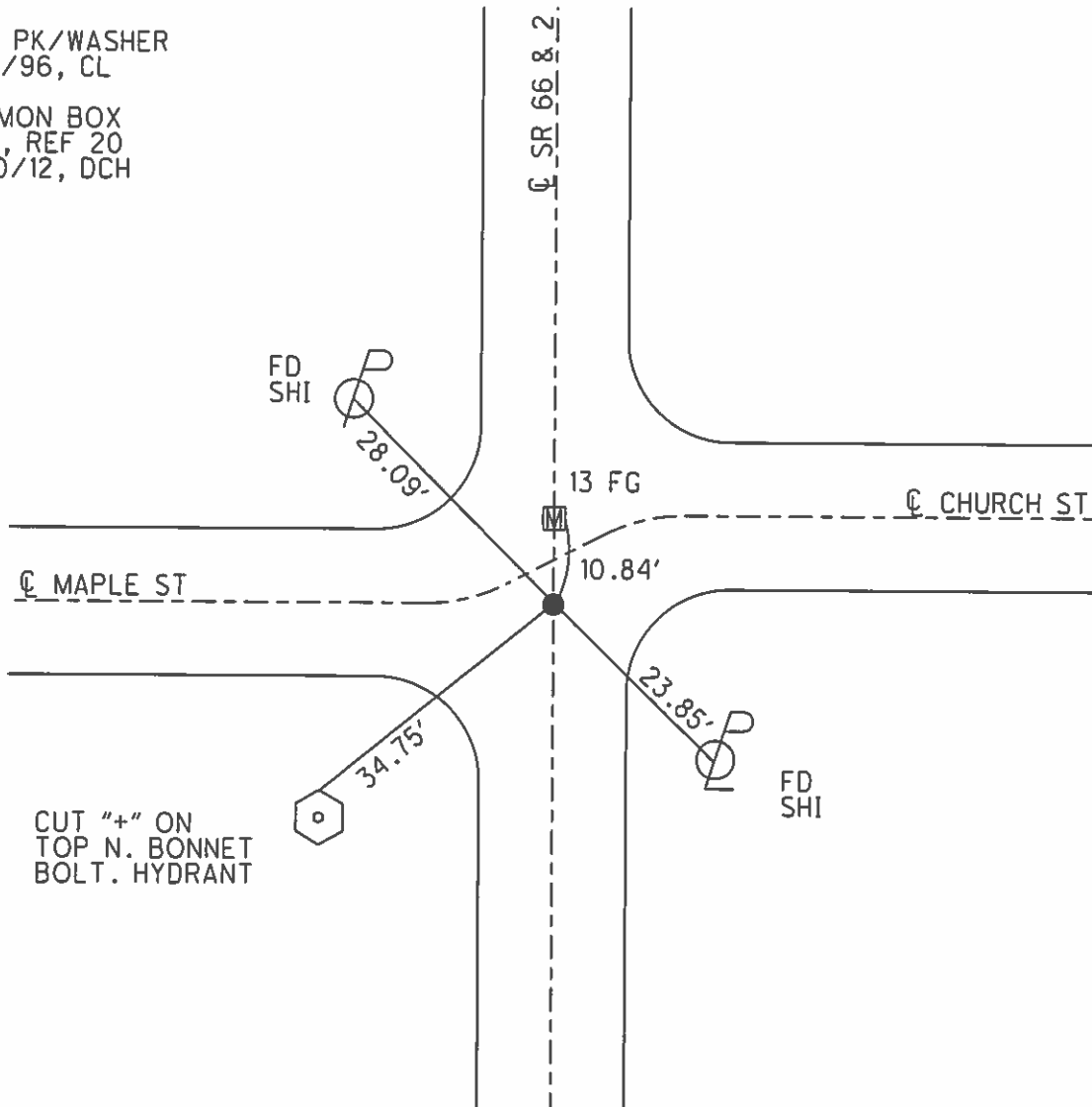
TYPE MONUMENT 1" IPIN  
 ON SURFACE - ~~BELOW~~ 1"  
 LEFT - ☉ PAV'T - RIGHT ON  
- TO - EDGE PAVEMENT  
 S.L.M. 225+35



Grid: Northing: 683040.655 Easting: 1473938.540

SET PK/WASHER  
 9/4/96, CL

FD MON BOX  
 GPS, REF 20  
 7/10/12, DCH

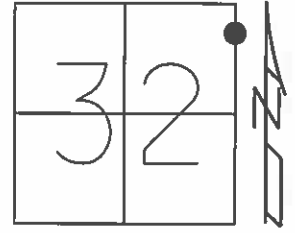


CUT "+" ON  
 TOP N. BONNET  
 BOLT. HYDRANT

O.D.O.T. DISTRICT 2 SURVEY OFFICE (USE ONLY)

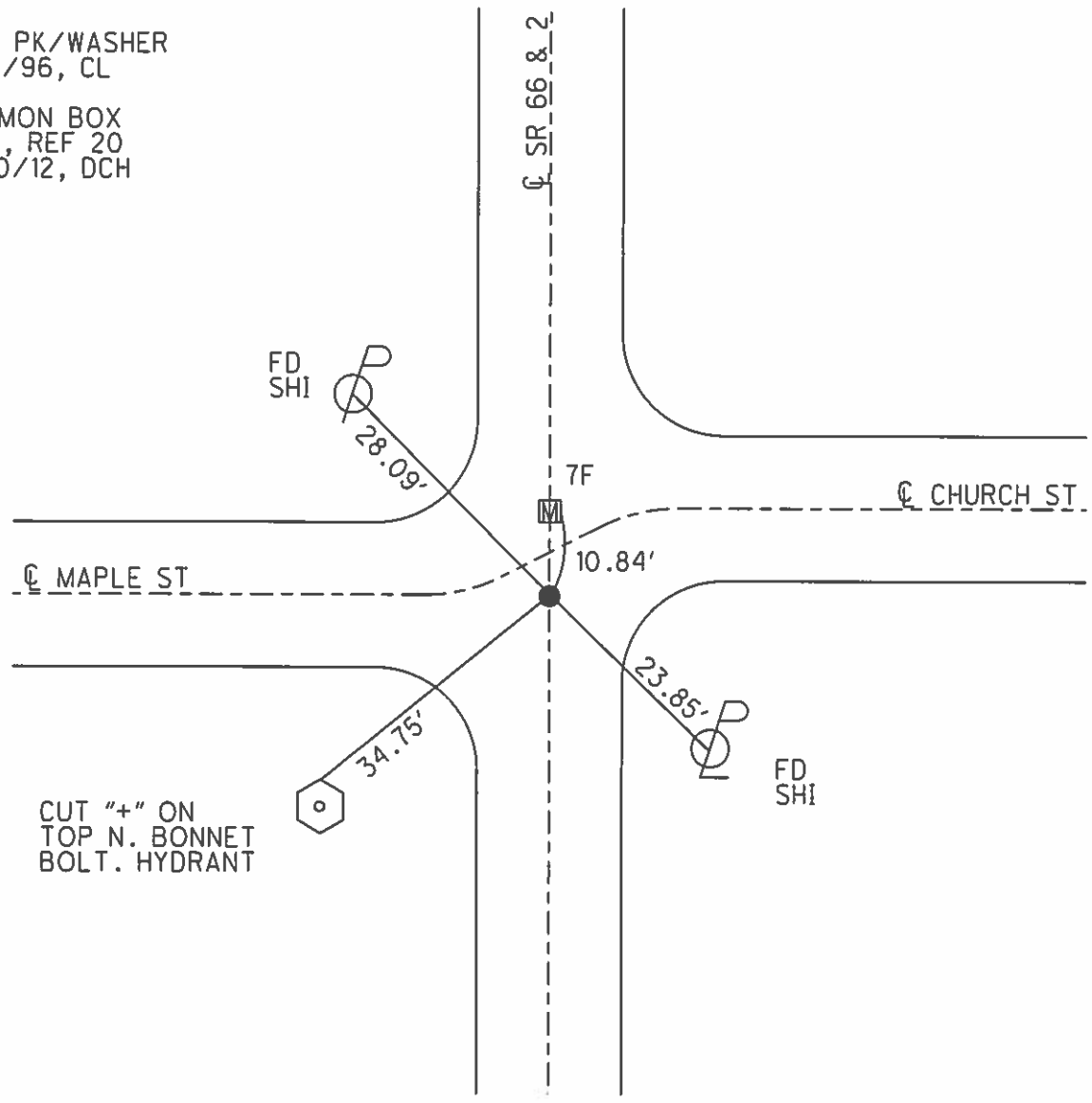
PERSONNEL \_\_\_\_\_ REFERENCE NO. 7 E SHEET 4 OF 8  
 NOTES LOEHRKE DATE 8/9/95 ROUTE SR 66, SR 2  
 H.C. ROUSOS WEATHER CLOUDY COUNTY FULTON  
 R.C. CANTERBURY TEMP. 77° TOWNSHIP GERMAN  
 \_\_\_\_\_ SECTION 32  
 \_\_\_\_\_ T 7 N R 5 E

TYPE MONUMENT 1" IPIN  
 ON SURFACE - ~~BELOW~~ 1"  
 LEFT - ☉ PAV'T - RIGHT ON  
\_\_\_\_\_ TO \_\_\_\_\_ EDGE PAVEMENT  
 S.L.M. 225+35



Grid: Northing: 683040.655 Easting: 1473938.540

SET PK/WASHER  
 9/4/96, CL  
 FD MON BOX  
 GPS, REF 20  
 7/10/12, DCH



CUT "+" ON  
 TOP N. BONNET  
 BOLT. HYDRANT

# O.D.O.T. DISTRICT 2 SURVEY OFFICE

PERSONNEL \_\_\_\_\_

REFERENCE NO. 13 F

SHEET 20 OF 23

NOTES LOEHRKE

H.C. ROUSAS

R.C. CANTERBURY

DATE 8-9-95

WEATHER CLOUDY

TEMP. +75°F

ROUTE S.R. # 2 SR66

COUNTY FULTON

TOWNSHIP GERMAN

SECTION 32

T 7 N R 5 E

Set P.K. / WASHER

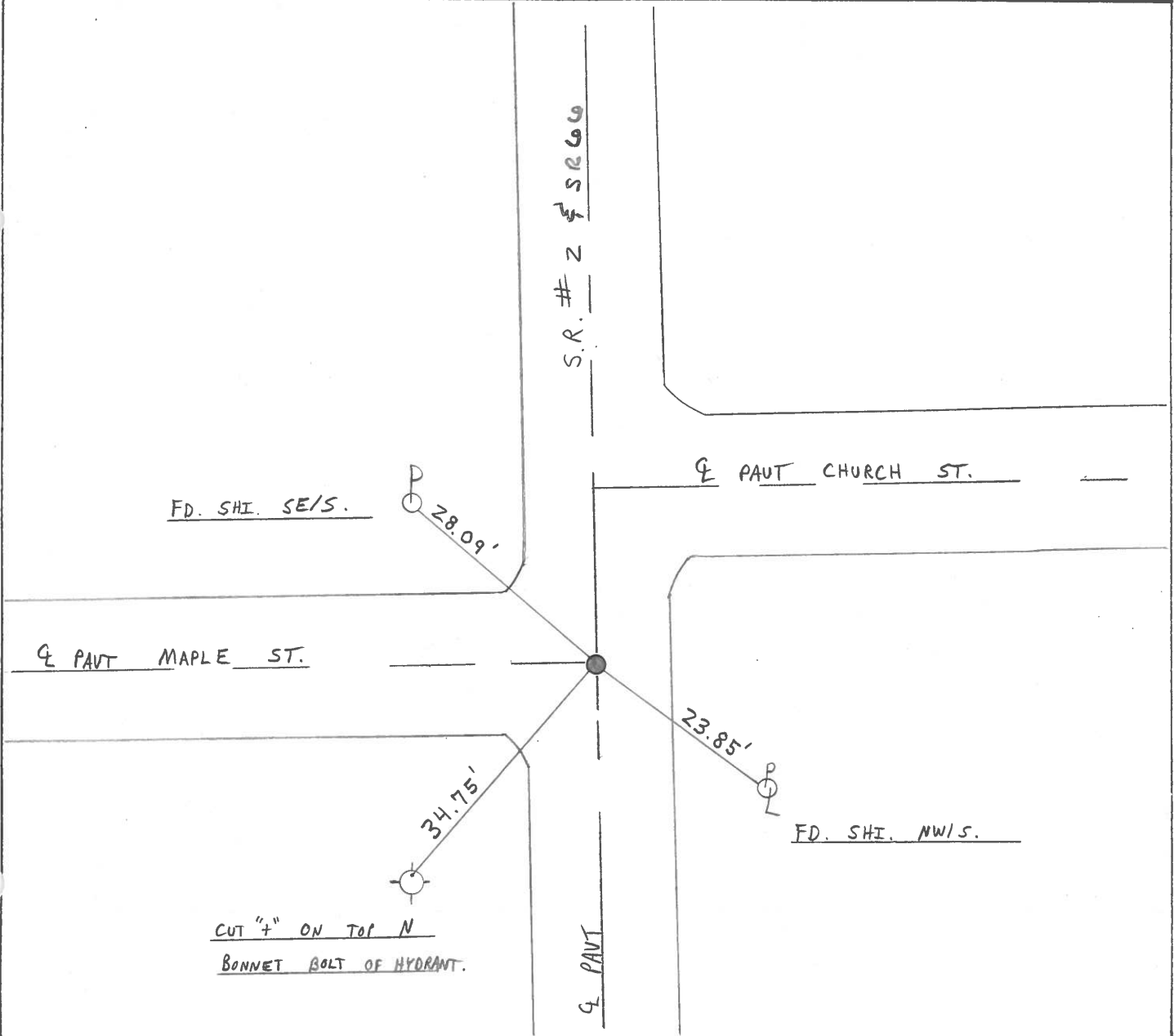
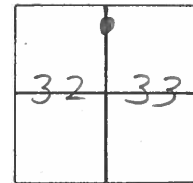
TYPE MONUMENT 1" IRON ROD 9-4-96

ON SURFACE - BELOW 1" BELOW

LEFT - & PAV'T. - RIGHT ON &

TO EDGE PAVEMENT

S.L.M. 225+35



PERSONNEL TITLE PERSONNEL TITLE

COUNTY Fulton

DATE OK-1-22-58

S. R. # 2

WEATHER 12-12-58  
W. No. OK. 10-26-61

SEC.

TEMP.

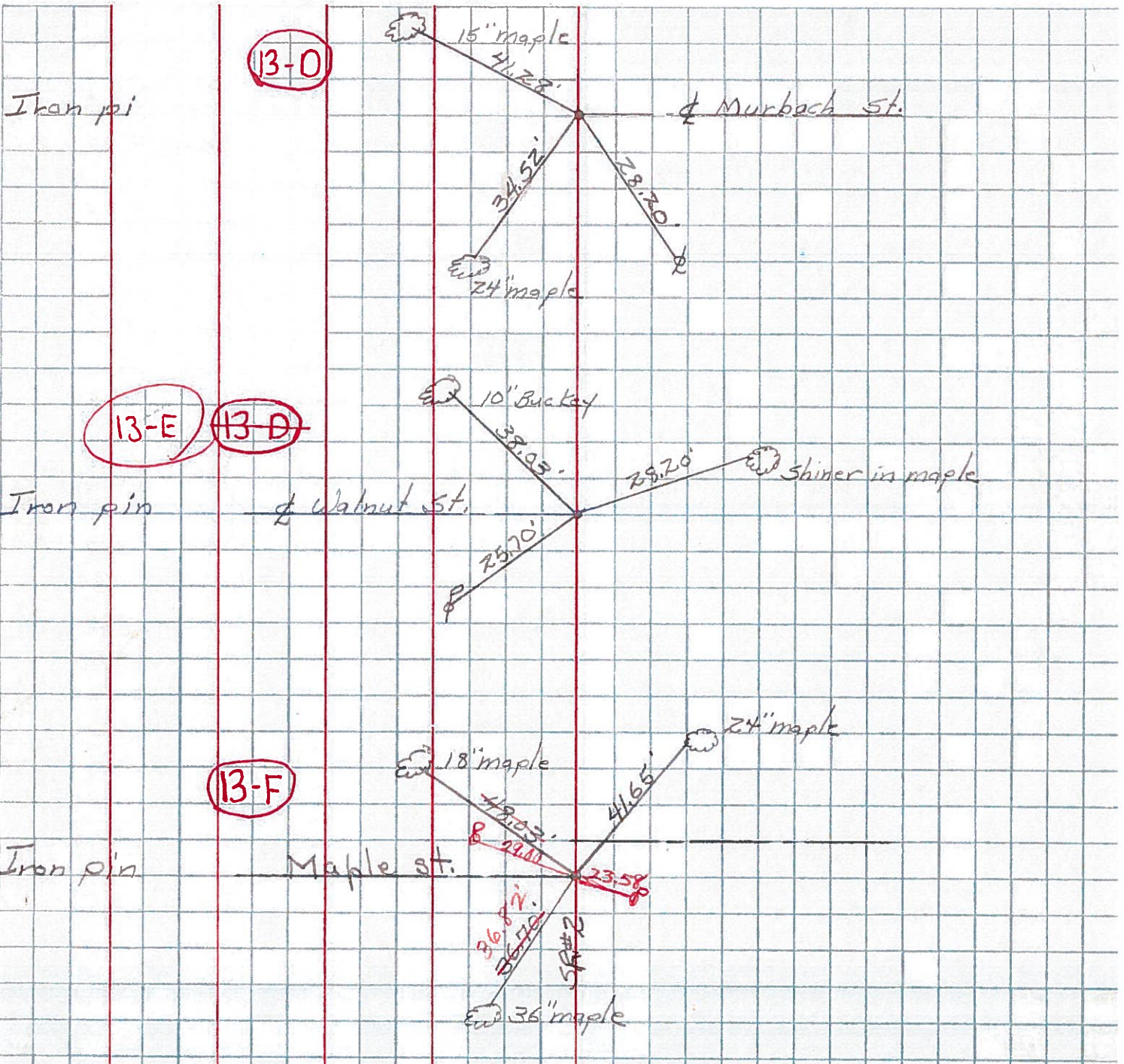
DESCRIPTION Street cars. in Archbold, Ohio.

JOB NO.

LEFT

CENTER LINE

RIGHT



13-D

13-E

13-D

13-F

Iron pin

Iron pin

Iron pin

S.E. #66 & Co. Rd East  
E.E. spk.

Shiner in T.P.	N.W.	32.50
Shiner in 12" maple	N.N.W.	58.40
shiner in P.P.	N.N.E.	45.46
Face Fire Hyd.	N.E.	49.71
Shiner P.P.	S.S.E.	36.40