

O.D.O.T. DISTRICT 2 SURVEY OFFICE (USE ONLY)

PERSONNEL

REFERENCE NO. 14 A

SHEET 9 OF 9

NOTES AUBLE

DATE 12/21/23

ROUTE SR 2

H.C. NIESE

WEATHER CLOUDY

COUNTY FULTON

R.C. ASTON

TEMP. 40°

TOWNSHIP GERMAN

SECTION 21

DWG BY RHOADES

PID PAVING TRAIN

T 7 N R 5 E

TYPE MONUMENT MONBOX W/ CMON

ON SURFACE - ~~BELOW~~ ON

OFFSET CL PAVEMENT 0.5' LT : ~~RT~~

9.6' TO LT EDGE PAVEMENT

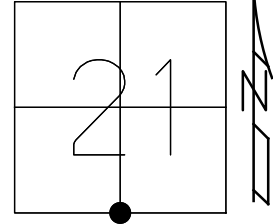
STATION: 310+04

HORZ. DATUM: NAD83 2011

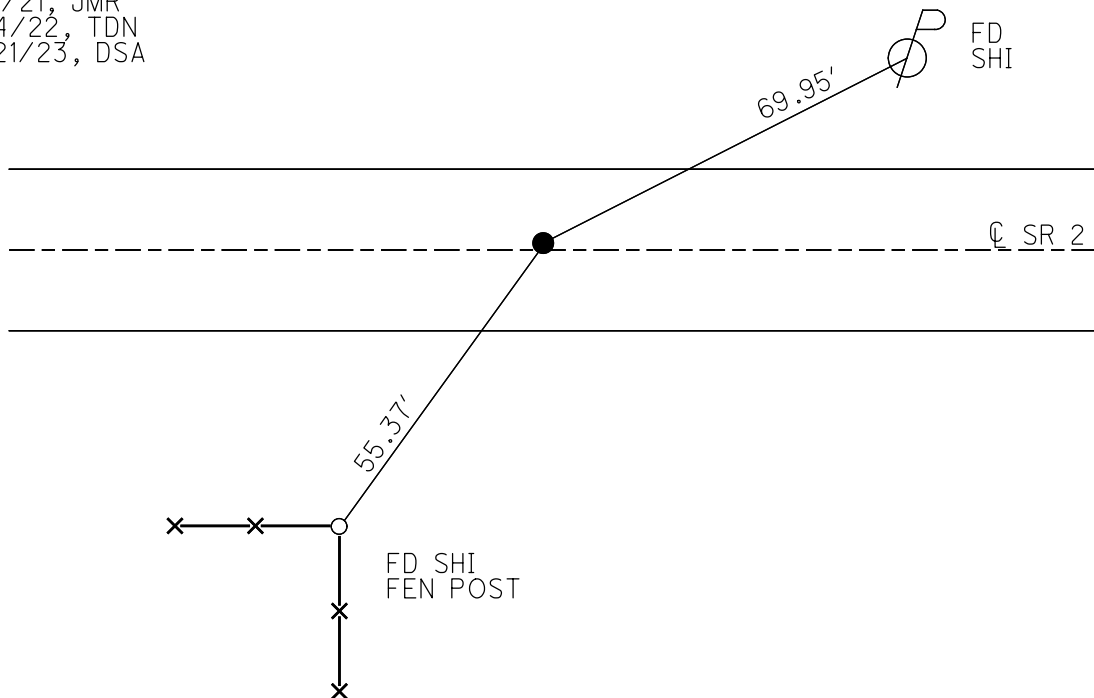
GEOID: NAVD88 2012A

GRID: NORTHING: 688789.848

EASTING: 1476602.081



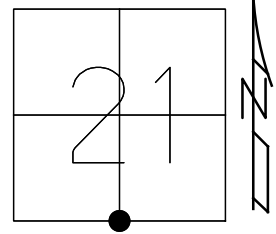
RECORD:  
 FD P.K.NAIL  
 5/13/02, DCH  
 SET P.K./WASHER  
 7/26/02, DCH  
 FD P.K.NAIL  
 REF 25  
 7/10/12, DCH  
 FD MONBOX  
 W/CMON  
 REFA14  
 9/24/20, JMR  
 3/5/21, JMR  
 7/14/22, TDN  
 12/21/23, DSA



O.D.O.T. DISTRICT 2 SURVEY OFFICE (USE ONLY)

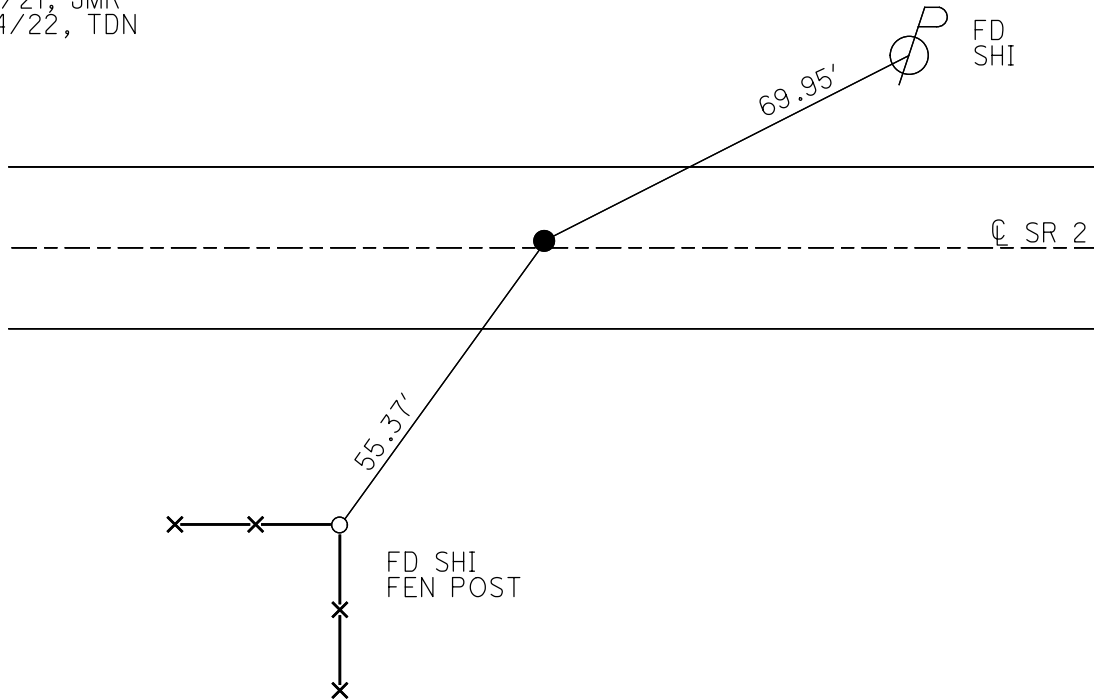
PERSONNEL \_\_\_\_\_ REFERENCE NO. 14 A SHEET 9 OF 9  
 NOTES NIESE DATE 3/5/21 ROUTE SR 2  
 H.C. RHOADES WEATHER SUNNY COUNTY FULTON  
 R.C. \_\_\_\_\_ TEMP. 35° TOWNSHIP GERMAN  
 \_\_\_\_\_ SECTION 21  
 DWG BY NIESE PID PAVETRAIN T 7 N R 5 E

TYPE MONUMENT MONBOX W/ CMON  
 ON SURFACE - ~~BELOW~~ ON \_\_\_\_\_  
 OFFSET 0.5' LT : ~~RT~~  
9.6' TO LT EDGE PAVEMENT  
 STATION: 310+04



HORIZ.DATUM: NAD83 2011 GEOID: NAVD88 2012A  
 GRID: NORTHING: 688789.848 EASTING: 1476602.081

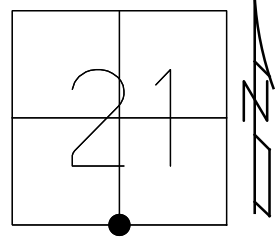
RECORD:  
 FD P.K.NAIL  
 5/13/02, DCH  
 SET P.K./WASHER  
 7/26/02, DCH  
 FD P.K.NAIL  
 REF 25  
 7/10/12, DCH  
 FD MONBOX  
 W/CMON  
 REFA14  
 9/24/20, JMR  
 3/5/21, JMR  
 7/14/22, TDN



O.D.O.T. DISTRICT 2 SURVEY OFFICE (USE ONLY)

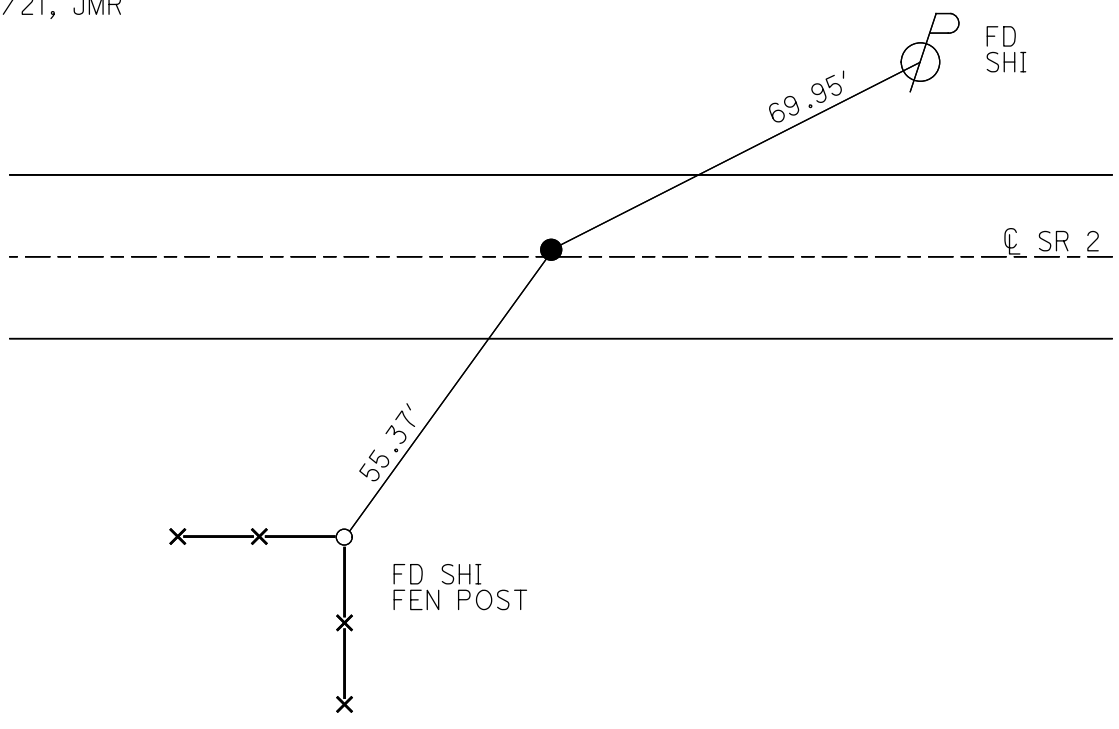
PERSONNEL \_\_\_\_\_ REFERENCE NO. 14 A SHEET 9 OF 9  
 NOTES NIESE DATE 3/5/21 ROUTE SR 2  
 H.C. RHOADES WEATHER SUNNY COUNTY FULTON  
 R.C. \_\_\_\_\_ TEMP. 35° TOWNSHIP GERMAN  
 DWG BY NIESE PID PAVETRAIN SECTION 21  
 T 7 N R 5 E

TYPE MONUMENT MONBOX W/ CMON  
 ON SURFACE - ~~BELOW~~ ON \_\_\_\_\_  
 OFFSET CL PAVEMENT 0.5' LT : ~~RT~~  
9.6' TO LT EDGE PAVEMENT  
 STATION: 310+04



HORZ. DATUM: NAD83 2011 GEOID: NAVD88 2012A  
 GRID: NORTHING: 688789.848 EASTING: 1476602.081

RECORD:  
 FD P.K.NAIL  
 5/13/02, DCH  
 SET P.K./WASHER  
 7/26/02, DCH  
 FD P.K.NAIL  
 REF 25  
 7/10/12, DCH  
 FD MONBOX  
 W/CMON  
 REFA14  
 9/24/20, JMR  
 3/5/21, JMR



O.D.O.T. DISTRICT 2 SURVEY OFFICE (USE ONLY)

PERSONNEL

REFERENCE NO. 14 A

SHEET 9 OF 9

NOTES RHOADES

DATE 9/24/20

ROUTE SR 2

H.C. O'DONNELL

WEATHER SUNNY

COUNTY FULTON

R.C. AUBLE

TEMP. 68°

TOWNSHIP GERMAN

DWG BY RHOADES

PID PAVETRAIN

SECTION 21

T 7 N R 5 E

TYPE MONUMENT MONBOX W/ CMON

ON SURFACE - ~~BELOW~~ ON

OFFSET  $\text{C}$  PAVEMENT 0.5' LT : ~~RT~~

9.6' TO LT EDGE PAVEMENT

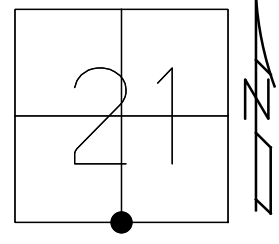
STATION: 310+04

HORIZ.DATUM: NAD83 2011

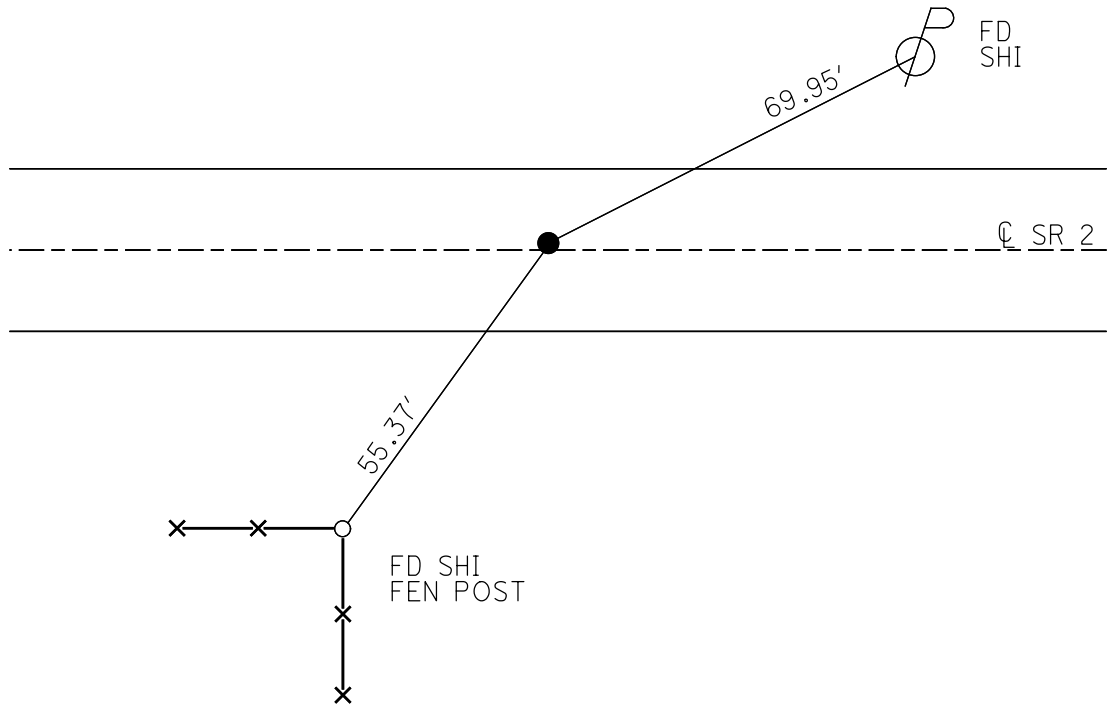
GEOID: NAVD88 2012A

GRID: NORTHING: 688789.848

EASTING: 1476602.081



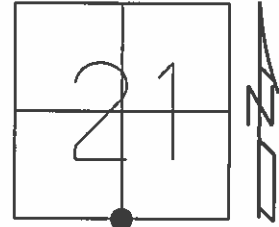
RECORD:  
 FD P.K.NAIL  
 5/13/02, DCH  
 SET P.K./WASHER  
 7/26/02, DCH  
 FD P.K.NAIL  
 REF 25  
 7/10/12, DCH  
 FD MONBOX  
 W/CMON  
 REFA14  
 9/24/20, JMR



O.D.O.T. DISTRICT 2 SURVEY OFFICE (USE ONLY)

PERSONNEL \_\_\_\_\_ REFERENCE NO. 14 A SHEET 9 OF 9  
 NOTES ROUSOS DATE 5/13/02 ROUTE SR 2  
 H.C. HOMAN WEATHER WINDY COUNTY FULTON  
 R.C. MICHALAK TEMP. 52° TOWNSHIP GERMAN  
 \_\_\_\_\_ SECTION 21  
 \_\_\_\_\_ T 7 N R 5 E

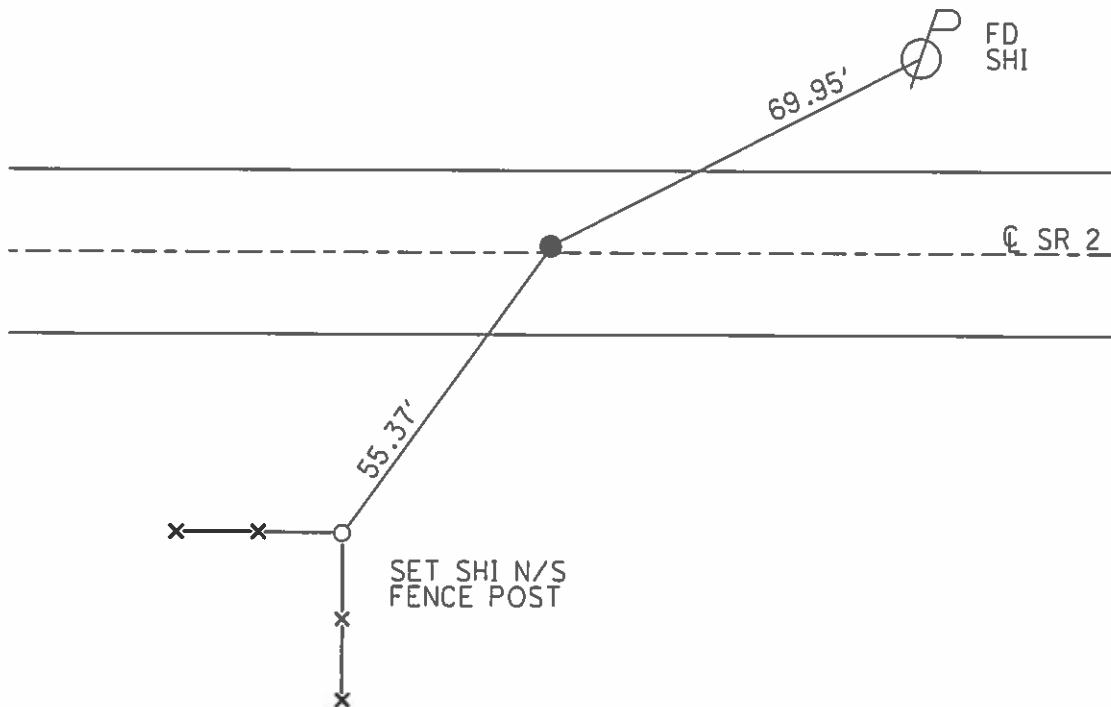
TYPE MONUMENT PK NAIL  
 ON SURFACE - ~~BELOW~~ ON  
 LEFT - ☉ PAV'T - ~~RIGHT~~ 0.5'  
9.6' TO LT EDGE PAVEMENT  
 S.L.M. 310+04



Grid: Northing: 688789.858 Easting: 1476602.005

SET PK/WASHER  
 7/26/02, DCH

FD PK NAIL  
 GPS, REF 25  
 7/10/12, DCH



O.D.O.T. DISTRICT 2 SURVEY OFFICE

PERSONNEL

REFERENCE NO. 14-A

SHEET 1 OF 13

NOTES ROUSOS

DATE 5-13-02

ROUTE S.R. 2

H.C. HOMAN

WEATHER WINDY

COUNTY FULTON

R.C. MICHALAK

TEMP. 52

TOWNSHIP GERMAN

SECTION 21

T 7 N R 5 E

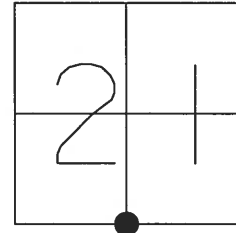
TYPE MONUMENT P.K. NAIL

ON SURFACE - ~~BELOW~~ YES

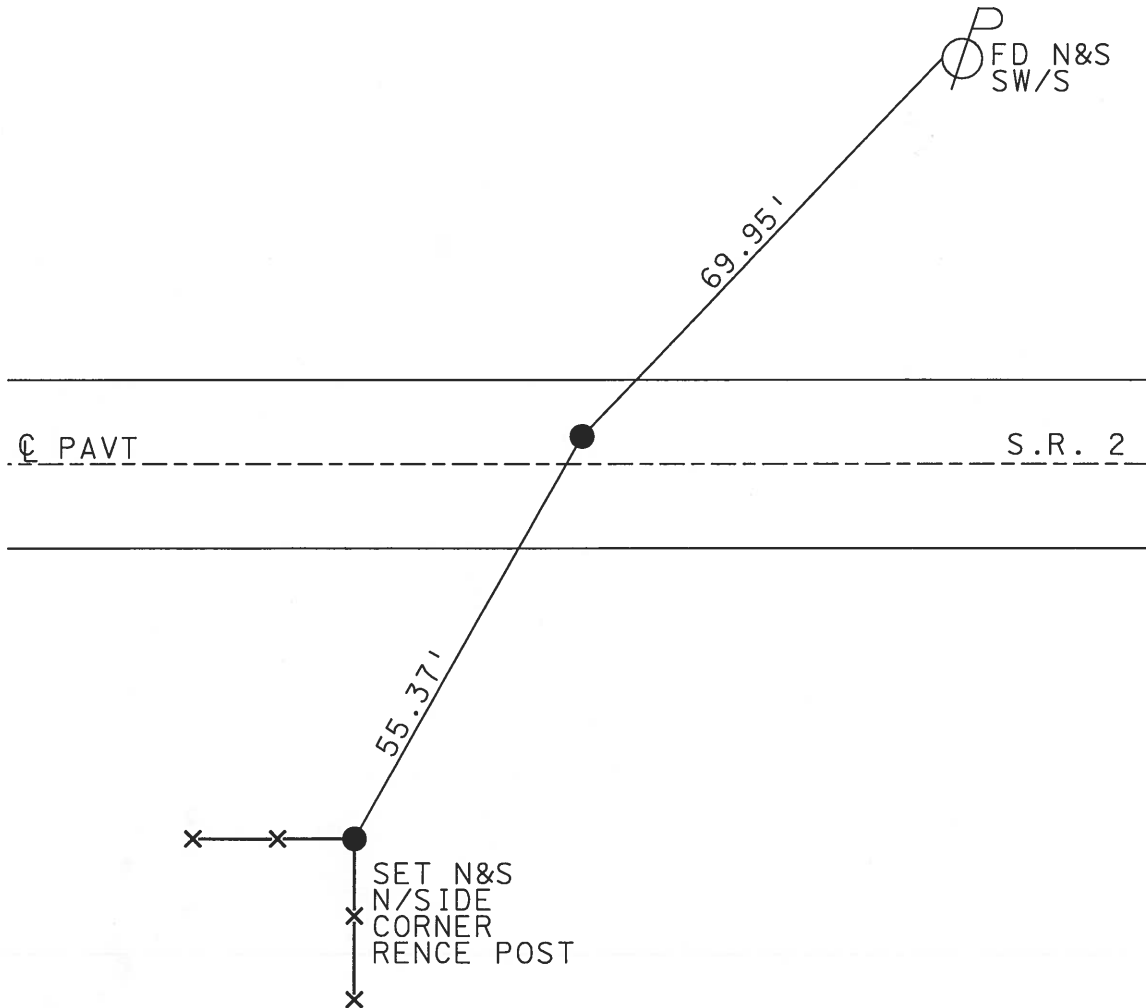
LEFT - ☉ PAV'T - ~~RIGHT~~ .5'

9.6' TO LT. EDGE PAVEMENT

S.L.M. 310+04



SET PK & WASHER  
7-26-02 D.C.H.



Resurfaced 2002

# O.D.O.T. DISTRICT 2 SURVEY OFFICE

PERSONNEL

REFERENCE NO. 144

SHEET 1 OF 13

NOTES 1. Stone

H.C. D. Curtis

DATE 17 Aug. 87

ROUTE SR 2

R.C. J. Haushalter

WEATHER Warm

COUNTY FULTON

TEMP. 80°

TOWNSHIP GERMAN

SECTION 21

T. 7 N. 5 E.

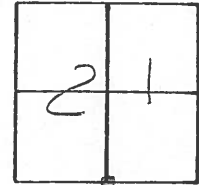
TYPE MONUMENT P.K.

ON SURFACE - BELOW yes

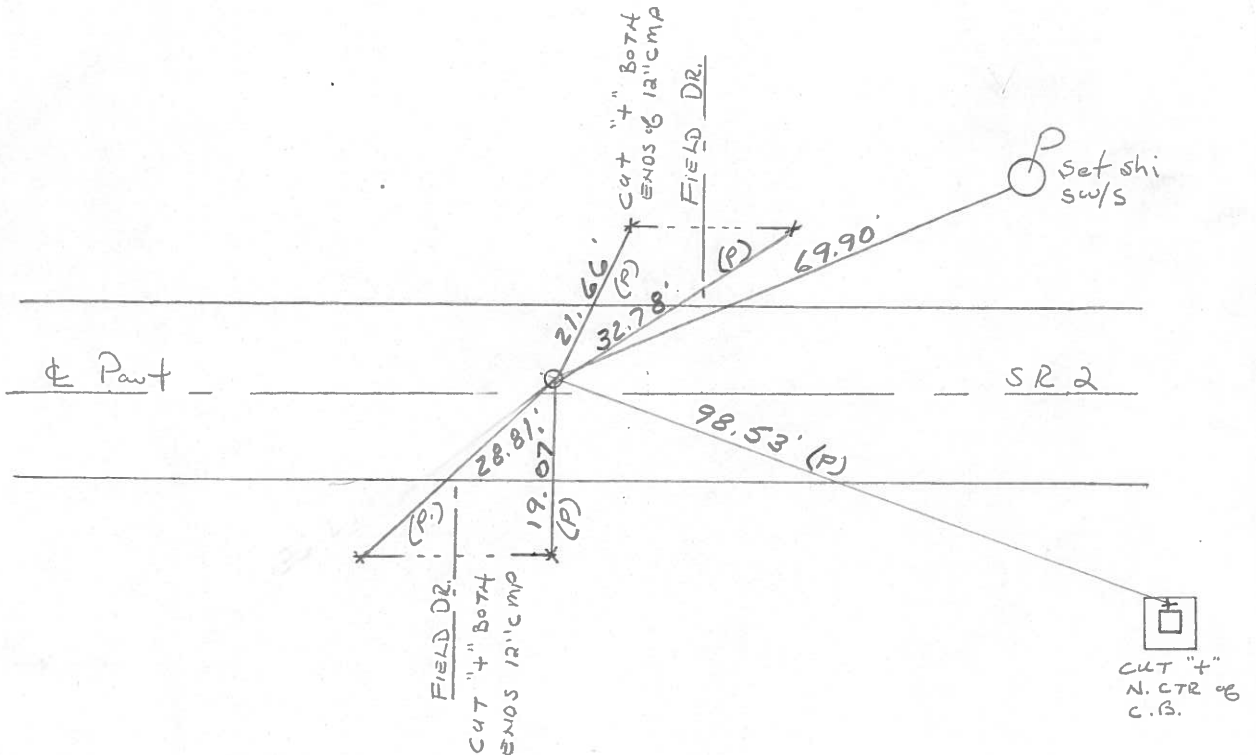
LEFT- & PAV'T. - RIGHT 0.5

9.6 TO LT EDGE PAVEMENT

S.L.M. 310 + 04



SET P.K. NAIL TO SURFACE  
4-29-88



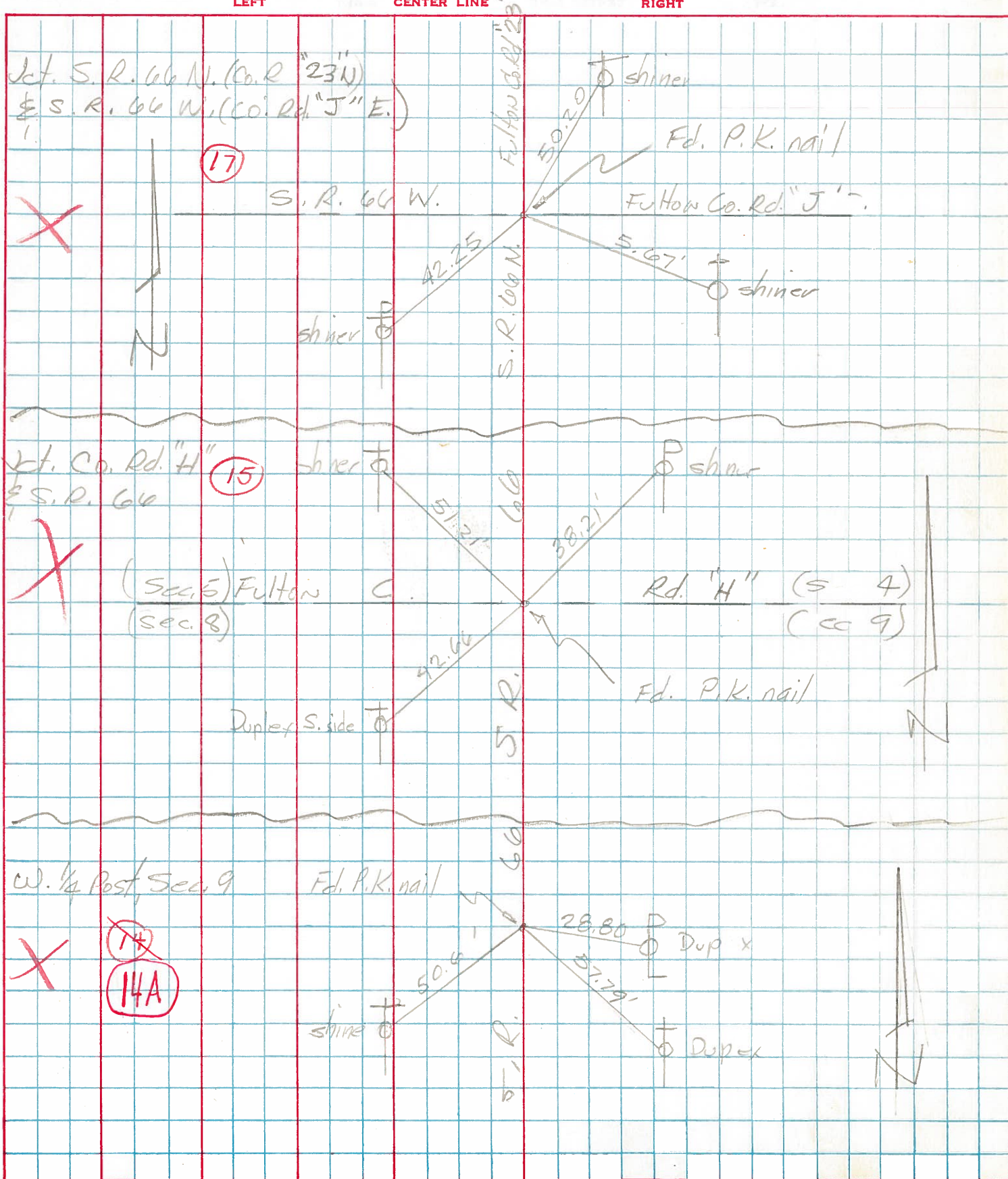
PERSONNEL	TITLE	PERSONNEL	TITLE
Tomsic		Boyle	
Nouser			
Granata			
Vandy			

COUNTY \_\_\_\_\_ DATE July 25, 1973

S. R. 66 WEATHER \_\_\_\_\_

SEC. 8, m Cor TEMP \_\_\_\_\_

DESCRIPTION \_\_\_\_\_ F P. JOB NO. \_\_\_\_\_





PERSONNEL TITLE PERSONNEL TITLE

COUNTY FV

DATE 5-1-67

Wisc

S. R. # 2

WEATHER Cloudy

Frikser Reader

SEC. SR#66 to Hancock

TEMP. 69°

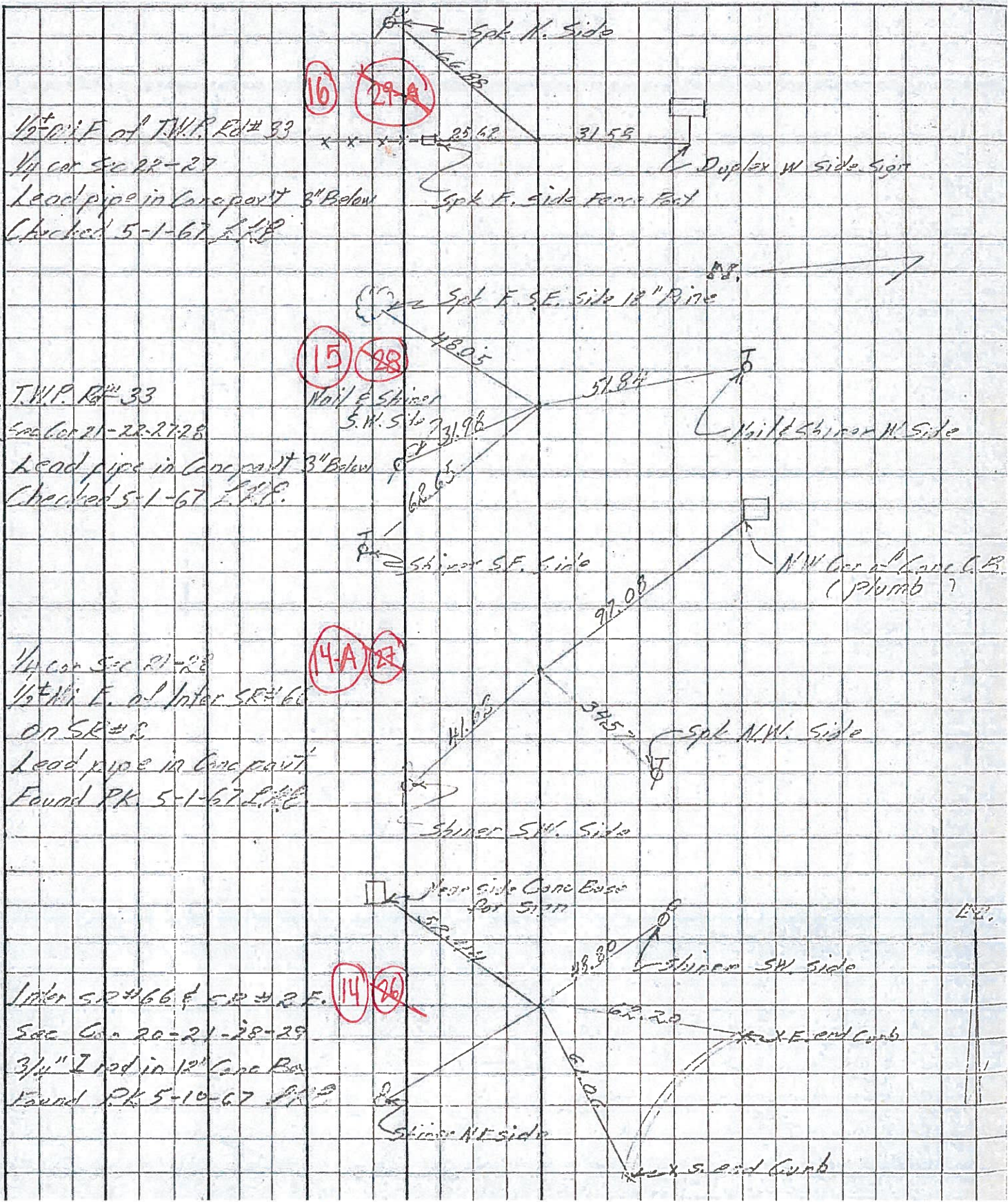
DESCRIPTION Witness to Control Points

JOB NO.

LEFT

CENTER LINE

RIGHT





PERSONNEL TITLE PERSONNEL TITLE

COUNTY Fulton

DATE OK 1-22-58

S. R. #2

WEATHER O.K. 10-26-61 7.9

SEC.

TEMP.

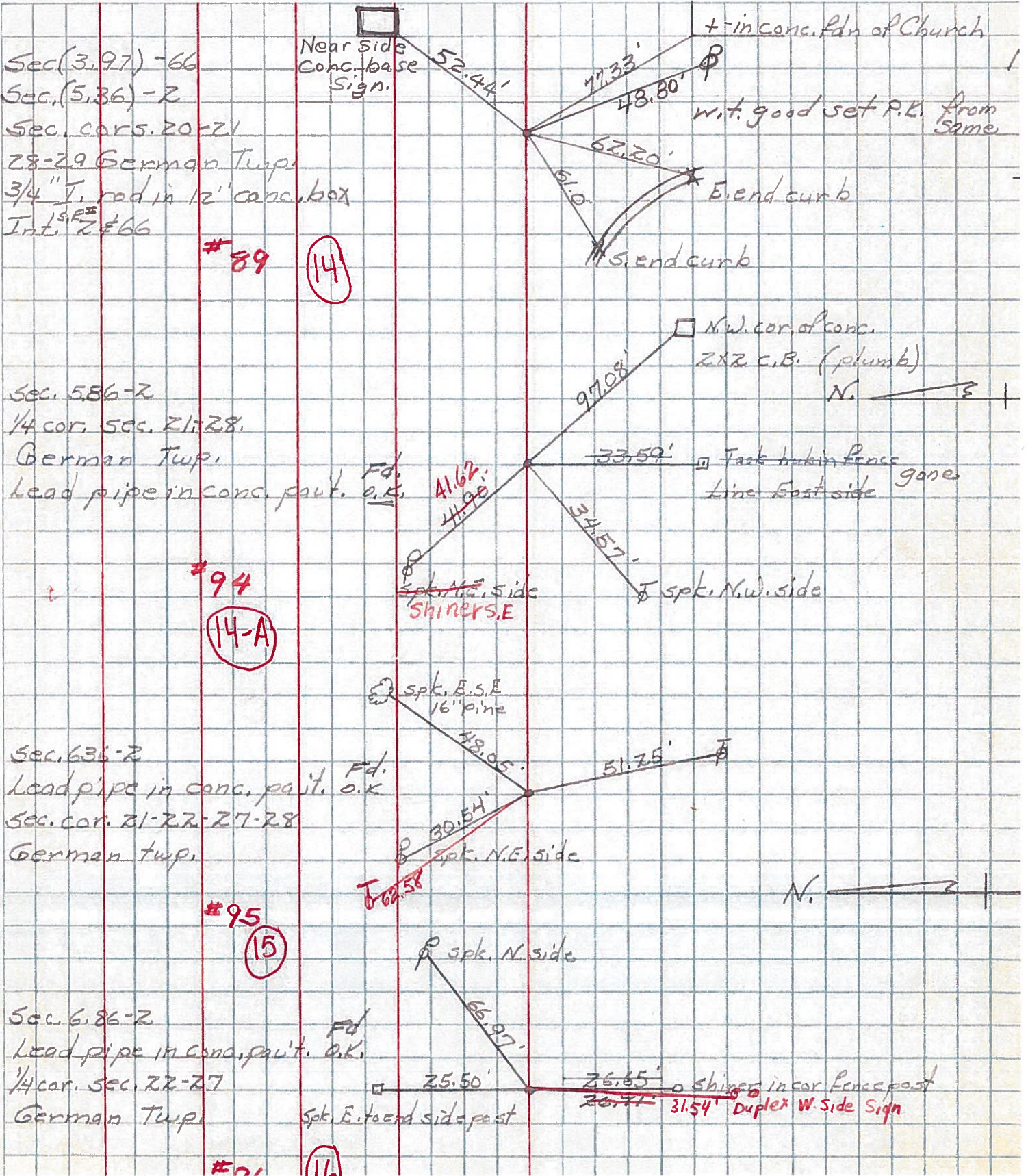
DESCRIPTION From S.P#66 East to Wauscon

JOB NO.

LEFT

CENTER LINE

RIGHT



Sec. (3.97) -66  
Sec. (5.36) -2  
Sec. cor. 20-21  
28-29 German Twp.  
3/4" I. rod in 12" conc. box  
Int. S.E. #66

Sec. 586-2  
1/4 cor. sec. 21-28.  
German Twp.  
Lead pipe in conc. post. o.k.

Sec. 636-2  
Lead pipe in conc. post. o.k.  
Sec. cor. 21-22-27-28  
German twp.

Sec. 6.86-2  
Lead pipe in conc. post. o.k.  
1/4 cor. sec. 22-27  
German Twp.

#89 (14)

#94 (14-A)

#95 (15)

#11A (11A)